

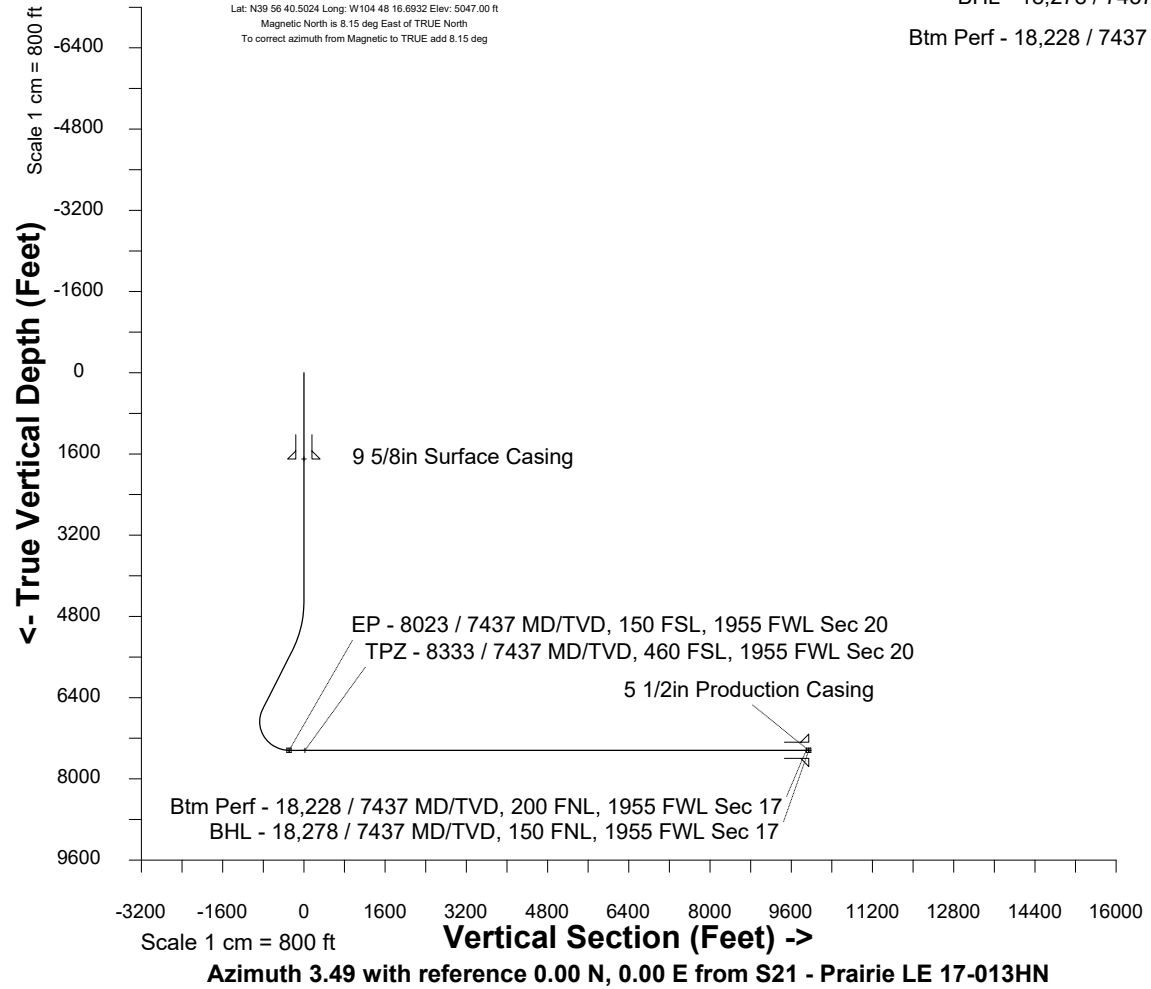
Nov-6-2018
EMM-2015 Dip: 66.28 deg Field: 51926.9 nT
Lat: N39 56 40.5024 Long: W104 48 16.6932 Elev: 5047.00 ft
Magnetic North is 8.15 deg East of TRUE North
To correct azimuth from Magnetic to TRUE add 8.15 deg

Great Western Operating Company, LLC

Location	Colorado	Slot	S21 - Prairie LE 17-013HN
Field	Wattenburg	Well	Prairie LE 17-013HN
Installation	Prairie	Wellbore	S21 - Prairie LE 17-013HN (PWB)

Scale 1 cm = 400 ft East (Feet) ->

Created by mmount
Date plotted 20-Dec-2019
Plot reference is S21 - Prairie LE 17-013HN (PWB).
Ref wellpath is S21 - Prairie LE 17-013HN (PWP#1).
Coordinates are in Feet reference S21 - Prairie LE 17-013HN.
True Vertical Depths are reference Rig Datum.
Measured Depths are reference Rig Datum.
Rig Datum: Planned Datum #1
Rig Datum to Mean Sea Level: 5067.00 ft.
Plot North is aligned to TRUE North.

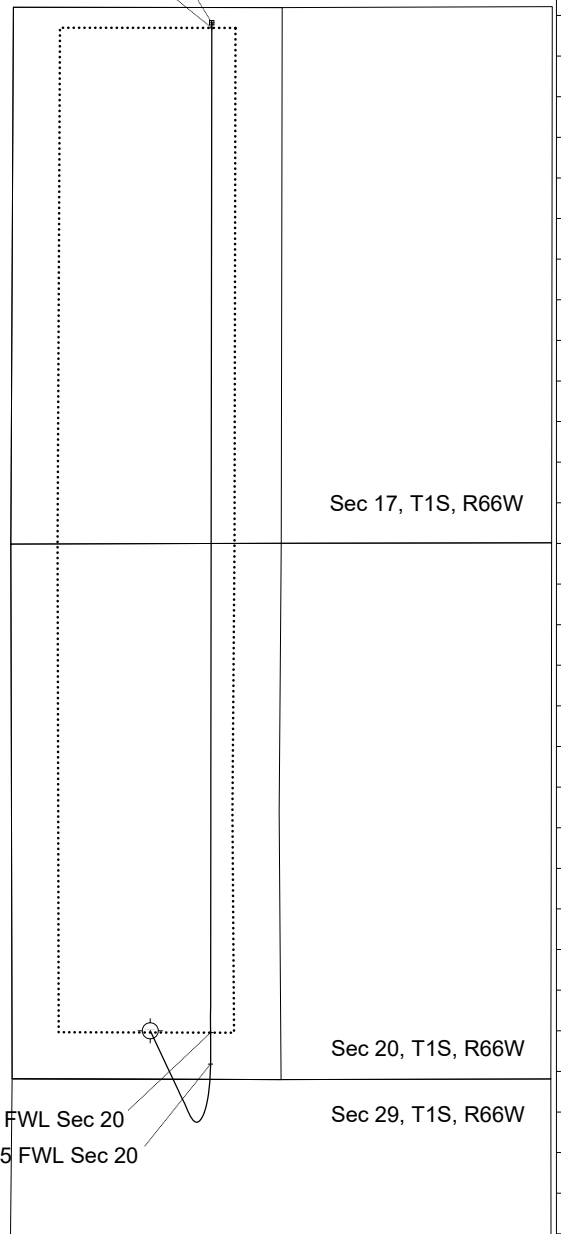


WELL PROFILE DATA

Point	MD	Inc	Azi	TVD	North	East	deg/100ft	V. Sect
Tie on	0.00	0.00	0.00	0.00	S 0.00	W 0.00		0.00
KOP	4512.00	0.00	154.82	4512.00	S 0.00	W 0.00	0.00	0.00
Target EP - 8...Sec 20	8022.74	90.00	0.07	7437.00	S 327.85	E 593.87	10.00	-291.08
Target TPZ 8...Sec 20	8332.74	90.00	0.07	7437.00	S 17.85	E 593.87	0.00	-291.08
Target BTM PERF.. 17	18228.42	90.00	0.07	7437.00	N 9877.83	E 605.68	0.00	9946.29
T.D. & Target BHL... 17	18278.42	90.00	0.07	7437.00	N 9927.83	E 605.68	0.00	9946.29

BHL - 18,278 / 7437 MD/TVD, 150 FNL, 1955 FWL Sec 17
Btm Perf - 18,228 / 7437 MD/TVD, 200 FNL, 1955 FWL Sec 17

TPZ - 8333 / 7437 MD/TVD, 460 FSL, 1955 FWL Sec 20
EP - 8023 / 7437 MD/TVD, 150 FSL, 1955 FWL Sec 20



Sec 17, T1S, R66W

Sec 20, T1S, R66W

Sec 29, T1S, R66W