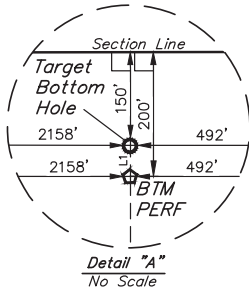


LEGEND:

- = 90° SYMBOL
- = PROPOSED WELLHEAD.
- ◆ = ENTRY POINT.
- ◆ = ENTRY POINT/TOP PERF
- = PERF. POINT
- = TARGET BOTTOM HOLE.
- ▲ = SECTION CORNERS LOCATED. (NAD 83)
- △ = SECTION CORNERS RE-ESTABLISHED. (Not Set on Ground.) (NAD 83)

| LINE TABLE | | |
|------------|-------------|---------|
| LINE | DIRECTION | LENGTH |
| L1 | N00°07'20"E | 50.00' |
| L2 | S66°57'09"E | 834.20' |
| L3 | N00°17'41"W | 310.00' |



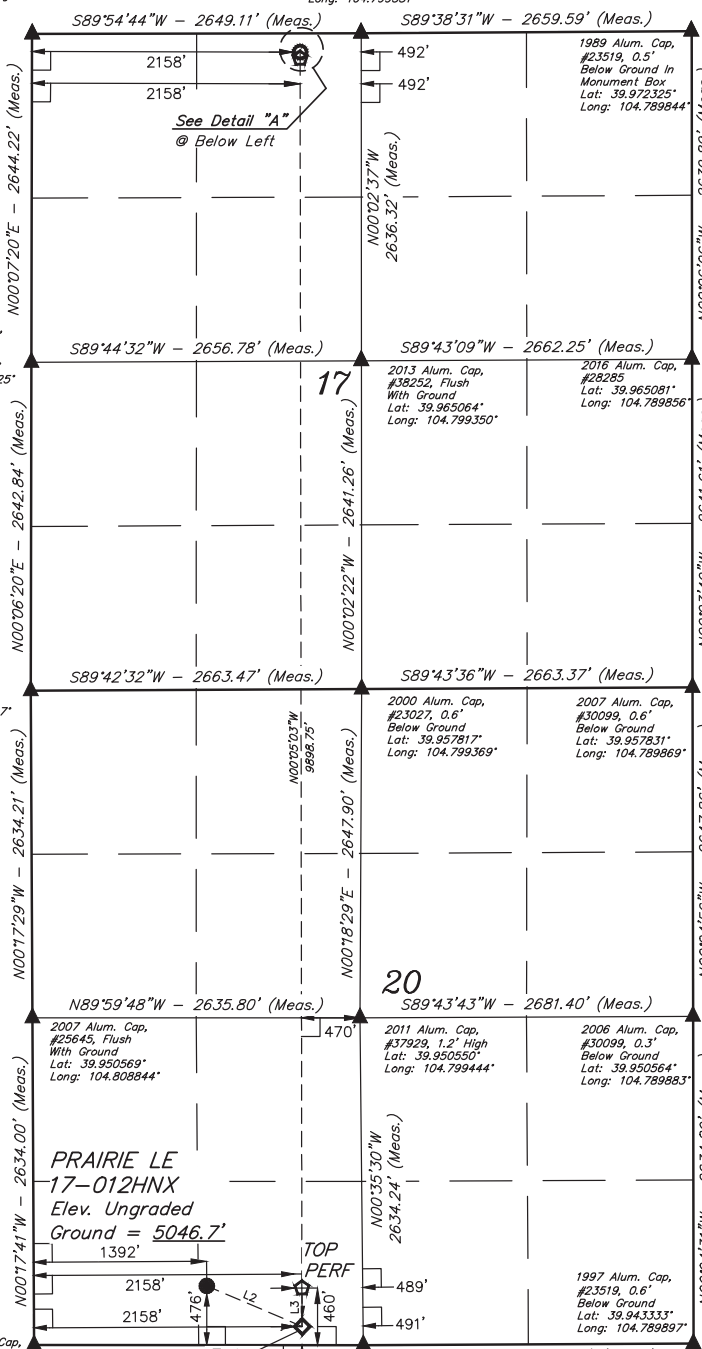
2010 Alum. Cap.
#22581, 0.5' Below
Ground In
Monument Box
Lat: 39.972308°
Long: 104.808781°

1989 Alum. Cap.
#23519, 0.5'
Below Ground
Lat: 39.972300°
Long: 104.799331°

T1S, R66W, 6th P.M.

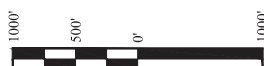
2006 Alum. Cap.
#27269, 0.6'
Below Ground
Lat: 39.965053°
Long: 104.808825°

1997 Alum. Cap.
#23027, 0.6'
Below Ground
Lat: 39.957797°
Long: 104.808867°



PDOP = 1.2

| | |
|--|--|
| NAD 83 (SURFACE LOCATION) | |
| LATITUDE = 39°56'40.69" (39.944637) | |
| LONGITUDE = 104°48'13.91" (104.803863) | |
| NAD 27 (SURFACE LOCATION) | |
| LATITUDE = 39°56'40.75" (39.944653) | |
| LONGITUDE = 104°48'12.00" (104.803335) | |
| NAD 83 (ENTRY POINT) | |
| LATITUDE = 39°56'37.45" (39.943735) | |
| LONGITUDE = 104°48'04.06" (104.801129) | |
| NAD 27 (ENTRY POINT) | |
| LATITUDE = 39°56'37.50" (39.943751) | |
| LONGITUDE = 104°48'02.16" (104.800601) | |
| NAD 83 (TOP PERF) | |
| LATITUDE = 39°56'40.51" (39.944586) | |
| LONGITUDE = 104°48'04.07" (104.801131) | |
| NAD 27 (TOP PERF) | |
| LATITUDE = 39°56'40.57" (39.944602) | |
| LONGITUDE = 104°48'02.17" (104.800604) | |
| NAD 83 (BTM PERF) | |
| LATITUDE = 39°58'18.31" (39.971753) | |
| LONGITUDE = 104°48'03.91" (104.801087) | |
| NAD 27 (BTM PERF) | |
| LATITUDE = 39°58'18.37" (39.971769) | |
| LONGITUDE = 104°48'02.01" (104.800559) | |
| NAD 83 (TARGET BOTTOM HOLE) | |
| LATITUDE = 39°58'18.80" (39.971890) | |
| LONGITUDE = 104°48'03.91" (104.801086) | |
| NAD 27 (TARGET BOTTOM HOLE) | |
| LATITUDE = 39°58'18.86" (39.971906) | |
| LONGITUDE = 104°48'02.01" (104.800558) | |



BASIS OF BEARINGS

BASIS OF BEARINGS IS A G.P.S. OBSERVATION

BASIS OF ELEVATION

USGS COOPERATIVE BASE NETWORK CONTROL STATION,
DESIGNATION "JR 53 5026". NGS DATA SHEET LISTS THE NAVD 88
ELEVATION AS BEING 5028 FEET.



UELS, LLC
Corporate Office * 85 South 200 East
Vernal, UT 84078 * (435) 789-1017



CERTIFICATE OF REGISTRATION
THIS IS TO CERTIFY THAT THE ABOVE NAMED LAND SURVEYOR HAS COMPLIED WITH THE
NOTES OF ACTUAL SURVEYS MADE BY HIMSELF OR UNDER HIS SUPERVISION
AND THAT THE SAME ARE TRUE AND CORRECT TO THE BEST OF HIS KNOWLEDGE AND BELIEF.

REGISTERED LAND SURVEYOR
REGISTRATION NO. 28285
STATE OF UTAH

REV: 1 07-26-19 Z.T. (SHL CHANGE)

GREAT WESTERN OPERATING COMPANY

PRAIRIE LE 17-012HNX
SE 1/4 SW 1/4, SECTION 20, T1S, R66W, 6th P.M.
ADAMS COUNTY, COLORADO

| | | | |
|--------------------|-------------------|----------|------------|
| SURVEYED BY | JARED CHRISTOPHER | 09-21-18 | SCALE |
| DRAWN BY | B.L.B. | 09-21-18 | 1" = 1000' |
| WELL LOCATION PLAT | | | |