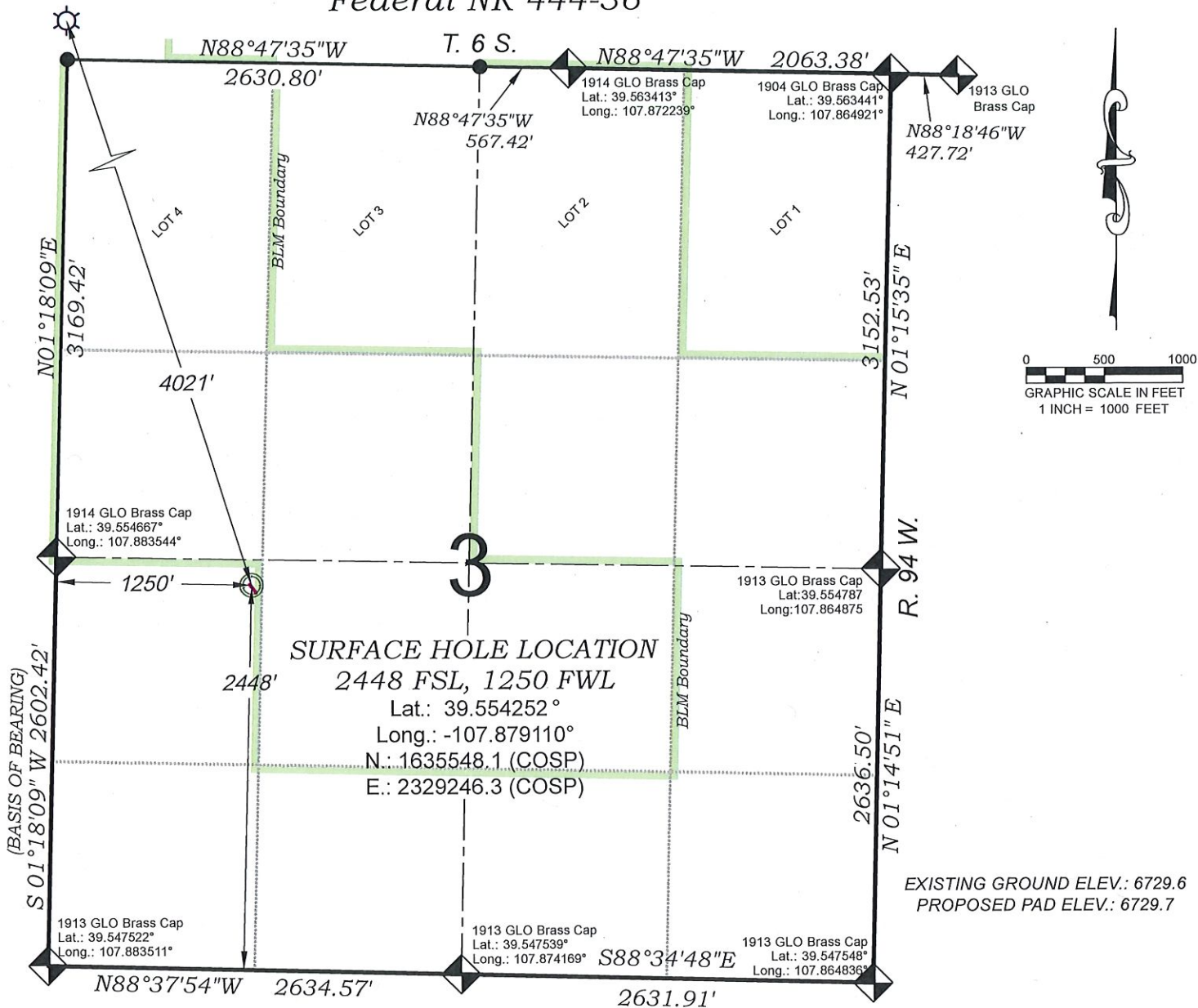


# Federal NR 444-36



SEE LOCATION DRAWING PLAT FOR  
VISIBLE IMPROVEMENTS WITHIN  
500' OF THIS LOCATION

## SURVEYORS STATEMENT

I, MICHAEL J. LANGHORNE, A REGISTERED LAND SURVEYOR IN THE STATE OF COLORADO DO HEREBY CERTIFY THAT THE SURVEY SHOWN HEREON WAS PREPARED UNDER MY DIRECT SUPERVISION AND HAS BEEN STAKED ON THE GROUND AS SHOWN ON THE PLAT AND CHECKING THAT THIS MAP IS A TRUE REPRESENTATION THEREOF.

*Michael J. Langhorne*  
36572

MICHAEL J. LANGHORNE, COLORADO REGISTRATION NO. 36572  
FOR AND ON BEHALF OF  
BOOKCLIFF SURVEY SERVICES, INC.

## REFERENCES

- 1) Dependent Resurvey, T. 6 S., R. 94 W., 6th P.M (GLO PLAT)
- 2) U.S.G.S. QUAD: RIFLE, CO

136 East Third Street  
Rifle, Colorado  
81650 Ph. (970)  
625-2720 Fax (970)  
625-2773

**BOOKCLIFF**  
Survey Services, Inc.

SURVEY DATE: 7/23/20  
MAP DATE: 8/31/20  
SCALE: 1" = 1000'  
PLAT: 1 of 7  
PROJECT: TEP Valley

- LEGEND -**
- FIELD LOCATED SECTION MONUMENTS AS DESCRIBED
  - FIELD SURVEYED WELL LOCATION
  - CALCULATED TOP OF PRODUCTION ZONE / BOTTOM HOLE LOCATION
  - CALCULATED SECTION CORNER LOCATION

## NOTES

- 1) ELEVATIONS BASED ON N.A.V.D. 1988 PUBLISHED COORDINATES.
- 2) LATITUDES AND LONGITUDES ARE BASE ON NAD 83, PUBLISHED COORDINATES
- 3) STATE PLANE COORDINATES ARE BASED ON COLORADO CENTRAL ZONE, U.S. SURVEY FEET.
- 4) ELEVATION MASK SET TO 15"
- 5) GPS OPERATOR J. KIRKPATRICK, OBSERVED A PDOP 2.9 ON SURVEY POINT NUMBER 19417.
- 6) SURFACE AND BOTTOM HOLE LOCATIONS ARE MEASURED 90° FROM SECTION LINES.

## WELL LOCATION PLAT Prepared for:



TEP Rocky Mountain LLC

NW1/4 SW1/4, SECTION 3  
T. 6 S., R. 94 W. of the 6th. P.M.  
GARFIELD COUNTY, COLORADO

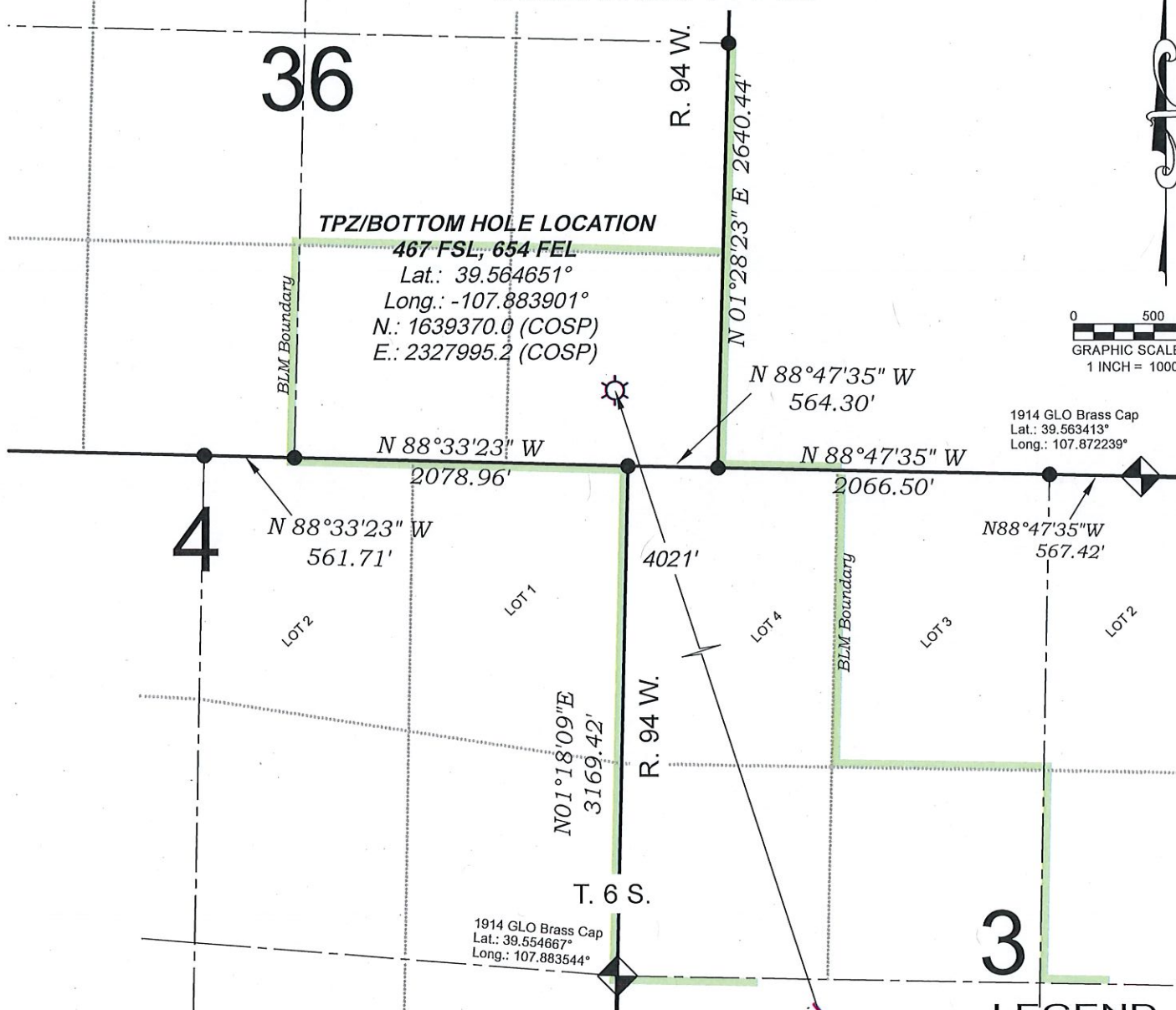
T. 5 S. TPZ/BOTTOM HOLE LOCATION  
Federal NR 444-36

36

TPZ/BOTTOM HOLE LOCATION

467' FSL, 654' FEL  
Lat.: 39.564651°  
Long.: -107.883901°  
N.: 1639370.0 (COSP)  
E.: 2327995.2 (COSP)

0 500 1000  
GRAPHIC SCALE IN FEET  
1 INCH = 1000 FEET



1914 GLO Brass Cap  
Lat.: 39.563413°  
Long.: 107.872239°

1914 GLO Brass Cap  
Lat.: 39.554667°  
Long.: 107.883544°

EXISTING GROUND ELEV.: 6729.6  
PROPOSED PAD ELEV.: 6729.7

**SURVEYORS STATEMENT**

I, MICHAEL J. LANGHORNE, A REGISTERED LAND SURVEYOR IN THE STATE OF COLORADO DO HEREBY CERTIFY THAT THE SURVEY SHOWN HEREON WAS PREPARED UNDER MY DIRECT SUPERVISION AND HAS BEEN STAKED ON THE GROUND AS SHOWN ON THE PLAT AND CHECKING THAT THIS MAP IS A TRUE REPRESENTATION THEREOF.

MICHAEL J. LANGHORNE, COLORADO REGISTRATION NO. 36572  
FOR AND ON BEHALF OF  
BOOKCLIFF SURVEY SERVICES, INC.

**REFERENCES**

- 1) Dependent Resurvey, T. 6 S., R. 94 W., 6th P.M. (GLO PLAT)
- 2) Dependent Resurvey, T. 5 S., R. 94 W., 6th P.M. (GLO PLAT)
- 3) U.S.G.S. QUAD: RIFLE, CO

REVISED: 9/9/20

SURVEY DATE: 7/23/20  
MAP DATE: 8/31/20  
SCALE: 1" = 1000'  
PLAT: 1A of 7  
PROJECT: TEP Valley

FIELD LOCATED SECTION  
MONUMENTS AS DESCRIBED

FIELD SURVEYED  
WELL LOCATION

CALCULATED TOP OF PRODUCTION ZONE  
/ BOTTOM HOLE LOCATION

CALCULATED SECTION  
CORNER LOCATION

**NOTES**

- 1) ELEVATIONS BASED ON N.A.V.D. 1988 PUBLISHED COORDINATES.
- 2) LATITUDES AND LONGITUDES ARE BASED ON NAD 83, PUBLISHED COORDINATES
- 3) STATE PLANE COORDINATES ARE BASED ON COLORADO CENTRAL ZONE, U.S. SURVEY FEET.
- 4) ELEVATION MASK SET TO 15°
- 5) GPS OPERATOR J. KIRKPATRICK, OBSERVED A PDOP 2.9 ON SURVEY POINT NUMBER 19417.
- 6) SURFACE AND BOTTOM HOLE LOCATIONS ARE MEASURED 90° FROM SECTION LINES.

**WELL LOCATION PLAT Prepared for:**



TEP Rocky Mountain LLC

NW1/4 SW1/4, SECTION 3  
T. 6 S., R. 94 W. of the 6th. P.M.  
GARFIELD COUNTY, COLORADO

136 East Third Street  
Rifle, Colorado  
81650 Ph. (970)  
625-2720 Fax (970)  
625-2773



**BOOKCLIFF**  
Survey Services, Inc.