

CCRP OPERATING INC.



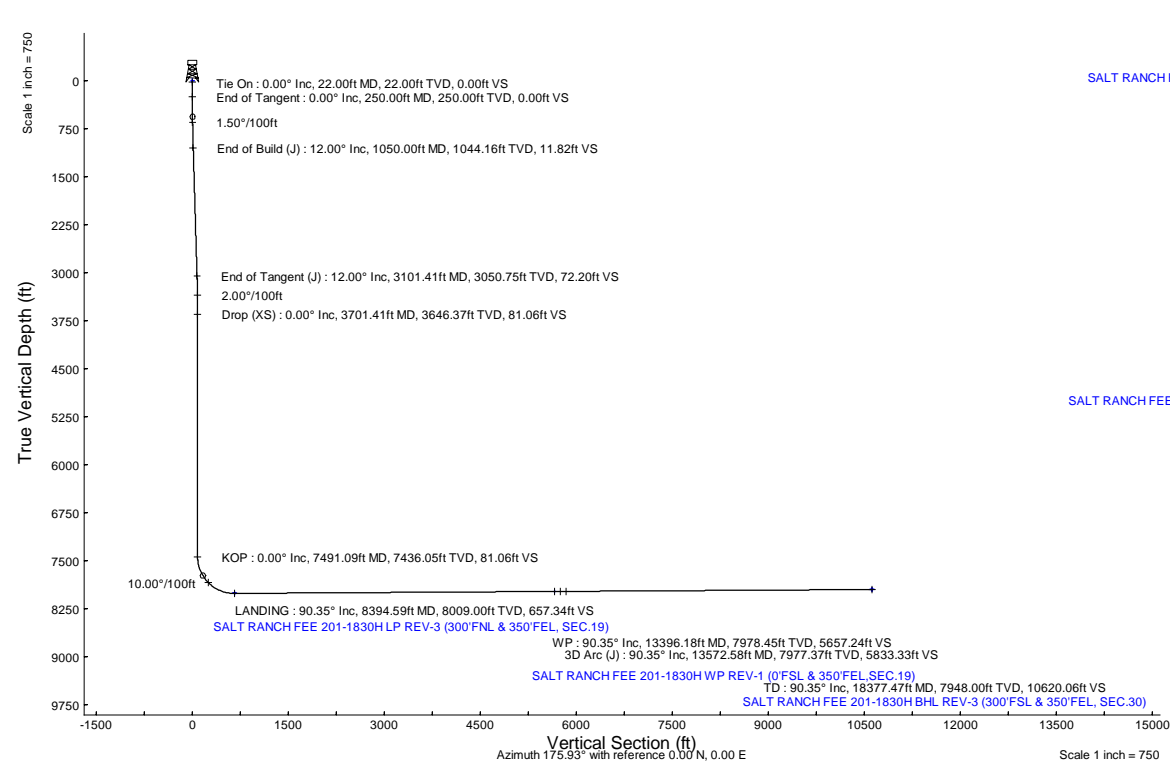
Location:	COLORADO	Slot:	SLOT#02 SALT RANCH FEE 201-1830H (332'FSL & 953'FEL, SEC.18)
Field:	WELD COUNTY (NAD 83/TN)	Well:	SALT RANCH FEE 201-1830H
Facility:	SEC.18-T11N-R64W	Wellbore:	SALT RANCH FEE 201-1830H PWB
Plot reference wellpath is SALT RANCH FEE 201-1830H PWP Rev.C.0		Grid System: NAD83 / Lambert Colorado SP, Northern Zone (501), US feet	
True vertical depths are referenced to RIG (22) (RKB)		North Reference: True north	
Reference wellpath measured depths are referenced to RIG (22) (RKB)		Scale: True distance	
RIG (22) (RKB) to Mean Sea Level: 5626 feet		Coordinates are in feet referenced to Slot	
Mean Sea Level to Mud line (At Slot: SLOT#02 SALT RANCH FEE 201-1830H (332'FSL & 953'FEL, SEC.18)): 0 feet		Depths are in feet	
Offset wellpath MDs are referenced to each path's default MD datum		Created by: painstr on 2020-09-23, Database: WellArchitectDB	

Location Information			
Facility Name		Grid East (US ft)	Grid North (US ft)
SEC.18-T11N-R64W		3253130.525	1577308.065
Latitude		Longitude	
40°54'52.1670"N		104°35'2.9760"W	
Slot		Local N (ft)	Local E (ft)
SLOT#02 SALT RANCH FEE 201-1830H (332'FSL & 953'FEL, SEC.18)		9.90	22.66
Grid East (US ft)		Grid North (US ft)	Latitude
3253153.087		1577318.197	40°54'52.2648"N
Longitude		104°35'2.6808"W	
RIG (22) (RKB) to Mud line (At Slot: SLOT#02 SALT RANCH FEE 201-1830H (332'FSL & 953'FEL, SEC.18))		5626R	
Mean Sea Level to Mud line (At Slot: SLOT#02 SALT RANCH FEE 201-1830H (332'FSL & 953'FEL, SEC.18))		0R	
RIG (22) (RKB) to Mean Sea Level		5626R	

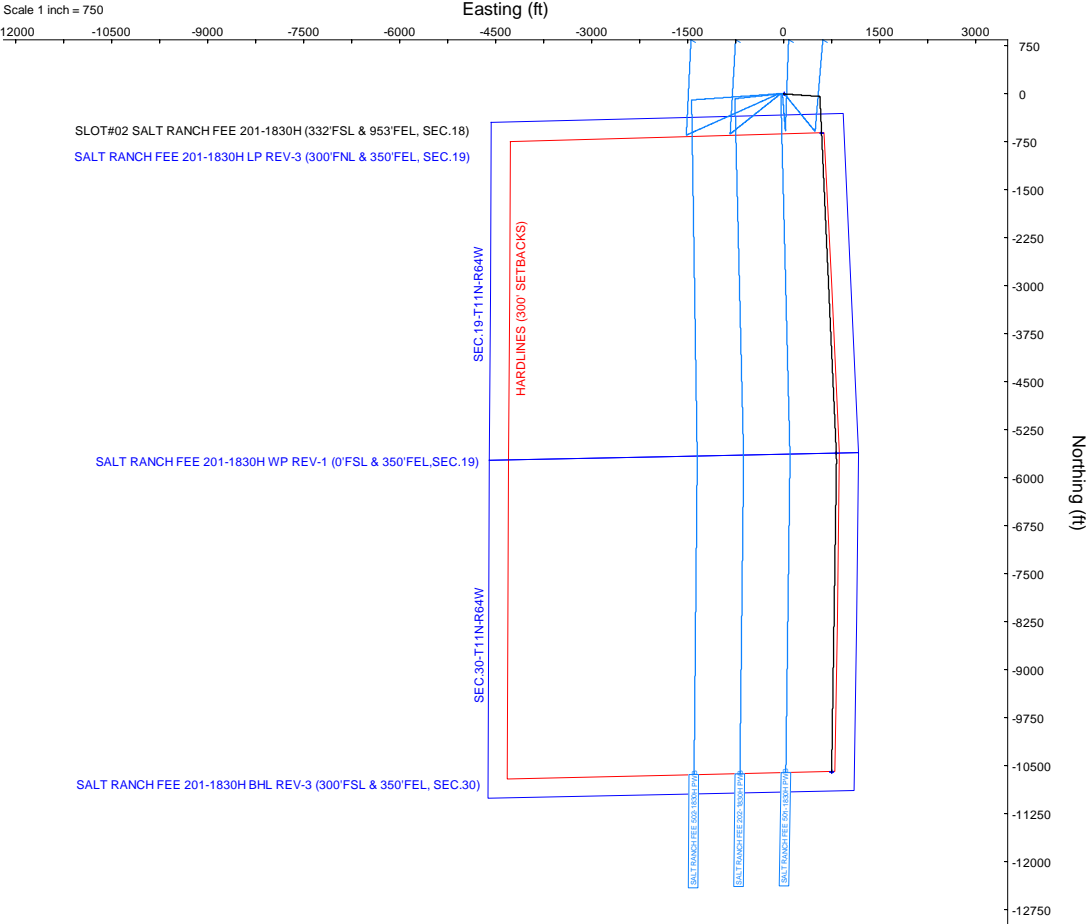
Survey Program			
Start MD (ft)	End MD (ft)	Tool	Model
22.00	1950.00	BH NavTrak (2019)	BH NavTrak (2019) (Axial)
Log Name/Comment		Wellbore	
SALT RANCH FEE 201-1830H PWB		SALT RANCH FEE 201-1830H PWB	
1950.00	18377.47	BH AutoTrak CurveXpress (2019)	BH AutoTrak CurveXpress (2019) (Short spacing)
Log Name/Comment		Wellbore	
SALT RANCH FEE 201-1830H PWB		SALT RANCH FEE 201-1830H PWB	

Targets							
Name	MD (ft)	TVD (ft)	Local N (ft)	Local E (ft)	Grid East (US ft)	Grid North (US ft)	Latitude
SEC.19-T11N-R64W	N/A	0.00	-0.36	14.93	3253168.01	1577317.99	40°54'52.2612"N
SEC.30-T11N-R64W	N/A	0.00	-0.36	14.93	3253168.01	1577317.99	40°54'52.2612"N
SALT RANCH FEE 201-1830H BHL REV-2 (300'FSL & 350'FEL, SEC.30)	N/A	7943.90	-10593.25	754.04	3254016.52	1566733.07	40°53'7.5948"N
SALT RANCH FEE 201-1830H BHL REV-3 (300'FSL & 350'FEL, SEC.30)	18377.47	7948.00	-10593.25	754.04	3254016.52	1566733.07	40°53'7.5948"N
SALT RANCH FEE 201-1830H BHL REV-1 (300'FSL & 350'FEL, SEC.30)	N/A	7949.00	-10593.25	754.04	3254016.52	1566733.07	40°53'7.5948"N
SALT RANCH FEE 201-1830H WP REV-1 (0'FSL & 350'FEL, SEC.19)	13396.18	7978.45	-5612.70	826.87	3254037.91	1571174.21	40°53'56.8068"N
SALT RANCH FEE 201-1830H LP REV-2 (300'FNL & 350'FEL, SEC.19)	N/A	8001.90	-616.46	597.57	3253757.01	1576707.92	40°54'46.1736"N
SALT RANCH FEE 201-1830H LP REV-1 (300'FNL & 350'FEL, SEC.19)	N/A	8006.00	-616.46	597.57	3253757.01	1576707.92	40°54'46.1736"N
SALT RANCH FEE 201-1830H LP REV-3 (300'FNL & 350'FEL, SEC.19)	8394.59	8009.00	-616.46	597.57	3253757.01	1576707.92	40°54'46.1736"N
SEC.19-30-T11N-R64W HARDLINES (300' SETBACKS)	N/A	8010.00	-0.36	14.93	3253168.01	1577317.99	40°54'52.2612"N

Bottom Hole Location									
MD (ft)	Inc (°)	Az (°)	TVD (ft)	Local N (ft)	Local E (ft)	Grid East (US ft)	Grid North (US ft)	Latitude	Longitude
18377.47	90.350	180.900	7948.00	-10593.25	754.04	3254016.52	1566733.07	40°53'7.5948"N	104°34'52.8636"W



Well Profile Data							
Design Comment	MD (ft)	Inc (°)	Az (°)	TVD (ft)	Local N (ft)	Local E (ft)	DLS (°/100ft)
Tie On	22.00	0.000	94.067	22.00	0.00	0.00	0.00
End of Tangent	250.00	0.000	94.067	250.00	0.00	0.00	0.00
End of Build (J)	1050.00	12.000	94.067	1044.16	-5.92	83.26	11.82
End of Tangent (J)	3101.41	12.000	94.067	3050.75	-36.17	508.70	72.20
Drop (XS)	3701.41	0.000	177.372	3646.37	-40.61	571.14	2.00
KOP	7491.09	0.000	177.372	7436.05	-40.61	571.14	0.00
LANDING	8394.59	90.350	177.372	8009.00	-616.46	597.57	10.00
WP	13396.18	90.350	177.372	7978.45	-5612.70	826.87	0.00
3D Arc (J)	13572.58	90.350	180.900	7977.37	-5789.04	829.53	2.00
TD	18377.47	90.350	180.900	7948.00	-10593.25	754.04	0.00



Planned Wellpath Report

SALT RANCH FEE 201-1830H PWP Rev-C.0
 Page 1 of 8

REFERENCE WELLPATH IDENTIFICATION

Operator	CCRP OPERATING INC.	Well	SALT RANCH FEE 201-1830H
Field	WELD COUNTY (NAD 83/TN)	API/Legal	
Facility	SEC.18-T11N-R64W	Wellbore	SALT RANCH FEE 201-1830H PWB
Slot	SLOT#02 SALT RANCH FEE 201-1830H (332'FSL & 953'FEL, SEC.18)		

REPORT SETUP INFORMATION

Projection System	NAD83 / Lambert Colorado SP, Northern Zone (501), US feet	Software System	WellArchitect® 6.0
North Reference	True	User	Painsetr
Scale	1.000024	Report Generated	9/23/2020 at 6:12:12 AM
Convergence at slot	0.59° East	Database	WellArchitectDB

WELLPATH LOCATION

	Local coordinates		Grid coordinates		Geographic coordinates	
	North[ft]	East[ft]	Easting[US ft]	Northing[US ft]	Latitude	Longitude
Slot Location	9.90	22.66	3253153.09	1577318.20	40.9145180°	-104.5840780°
Facility Reference Pt			3253130.53	1577308.07	40.9144908°	-104.5841600°
Field Reference Pt			3242001.26	1607883.12	40.9987100°	-104.6233300°

WELLPATH DATUM

Calculation method	Minimum curvature	RIG (22') (RKB) to Facility Vertical Datum	5626.00ft
Horizontal Reference Pt	Slot	RIG (22') (RKB) to Mean Sea Level	5626.00ft
Vertical Reference Pt	RIG (22') (RKB)	RIG (22') (RKB) to Mud Line at Slot (SLOT#02 SALT RANCH FEE 201-1830H (332'FSL & 953'FEL, SEC.18))	5626.00ft
MD Reference Pt	RIG (22') (RKB)	Section Origin	N 0.00, E 0.00 ft
Field Vertical Reference	Mean Sea Level	Section Azimuth	175.93°

Planned Wellpath Report

SALT RANCH FEE 201-1830H PWP Rev-C.0

Page 2 of 8

REFERENCE WELLPATH IDENTIFICATION

Operator	CCRP OPERATING INC.	Well	SALT RANCH FEE 201-1830H
Field	WELD COUNTY (NAD 83/TN)	API/Legal	
Facility	SEC.18-T11N-R64W	Wellbore	SALT RANCH FEE 201-1830H PWB
Slot	SLOT#02 SALT RANCH FEE 201-1830H (332'FSL & 953'FEL, SEC.18)		

WELLPATH DATA (194 stations) † = interpolated, ‡ = extrapolated station

MD [ft]	Inclination [°]	Azimuth [°]	TVD [ft]	Vert Sect [ft]	North [ft]	East [ft]	Grid East [US ft]	Grid North [US ft]	Latitude	Longitude	DLS [°/100ft]	Comments
0.00†	0.000	94.067	0.00	0.00	0.00	0.00	3253153.09	1577318.20	40.9145180	-104.5840780	0.00	
22.00	0.000	94.067	22.00	0.00	0.00	0.00	3253153.09	1577318.20	40.9145180	-104.5840780	0.00	Tie On
122.00†	0.000	94.067	122.00	0.00	0.00	0.00	3253153.09	1577318.20	40.9145180	-104.5840780	0.00	
222.00†	0.000	94.067	222.00	0.00	0.00	0.00	3253153.09	1577318.20	40.9145180	-104.5840780	0.00	
250.00	0.000	94.067	250.00	0.00	0.00	0.00	3253153.09	1577318.20	40.9145180	-104.5840780	0.00	End of Tangent
322.00†	1.080	94.067	322.00	0.10	-0.05	0.68	3253153.76	1577318.16	40.9145179	-104.5840756	1.50	
422.00†	2.580	94.067	421.94	0.55	-0.27	3.86	3253156.95	1577317.96	40.9145172	-104.5840640	1.50	
522.00†	4.080	94.067	521.77	1.37	-0.69	9.66	3253162.75	1577317.61	40.9145161	-104.5840431	1.50	
622.00†	5.580	94.067	621.41	2.56	-1.28	18.05	3253171.15	1577317.10	40.9145145	-104.5840127	1.50	
722.00†	7.080	94.067	720.80	4.12	-2.07	29.05	3253182.16	1577316.43	40.9145123	-104.5839729	1.50	
822.00†	8.580	94.067	819.86	6.05	-3.03	42.64	3253195.76	1577315.61	40.9145097	-104.5839237	1.50	
922.00†	10.080	94.067	918.54	8.35	-4.18	58.81	3253211.94	1577314.62	40.9145065	-104.5838652	1.50	
1022.00†	11.580	94.067	1016.75	11.01	-5.51	77.55	3253230.69	1577313.48	40.9145029	-104.5837974	1.50	
1050.00	12.000	94.067	1044.16	11.82	-5.92	83.26	3253236.40	1577313.14	40.9145018	-104.5837768	1.50	End of Build (J)
1122.00†	12.000	94.067	1114.59	13.94	-6.98	98.19	3253251.35	1577312.23	40.9144988	-104.5837227	0.00	
1222.00†	12.000	94.067	1212.41	16.88	-8.46	118.93	3253272.10	1577310.97	40.9144948	-104.5836477	0.00	
1322.00†	12.000	94.067	1310.22	19.82	-9.93	139.67	3253292.85	1577309.71	40.9144907	-104.5835727	0.00	
1422.00†	12.000	94.067	1408.04	22.77	-11.41	160.41	3253313.61	1577308.45	40.9144867	-104.5834976	0.00	
1522.00†	12.000	94.067	1505.85	25.71	-12.88	181.15	3253334.36	1577307.19	40.9144826	-104.5834226	0.00	
1622.00†	12.000	94.067	1603.66	28.65	-14.36	201.89	3253355.11	1577305.93	40.9144786	-104.5833476	0.00	
1722.00†	12.000	94.067	1701.48	31.60	-15.83	222.62	3253375.87	1577304.67	40.9144745	-104.5832725	0.00	
1822.00†	12.000	94.067	1799.29	34.54	-17.30	243.36	3253396.62	1577303.41	40.9144705	-104.5831975	0.00	
1922.00†	12.000	94.067	1897.11	37.48	-18.78	264.10	3253417.37	1577302.15	40.9144665	-104.5831225	0.00	
2022.00†	12.000	94.067	1994.92	40.43	-20.25	284.84	3253438.13	1577300.89	40.9144624	-104.5830474	0.00	
2122.00†	12.000	94.067	2092.74	43.37	-21.73	305.58	3253458.88	1577299.62	40.9144584	-104.5829724	0.00	
2222.00†	12.000	94.067	2190.55	46.31	-23.20	326.32	3253479.63	1577298.36	40.9144543	-104.5828974	0.00	
2322.00†	12.000	94.067	2288.37	49.26	-24.68	347.06	3253500.39	1577297.10	40.9144503	-104.5828223	0.00	
2422.00†	12.000	94.067	2386.18	52.20	-26.15	367.80	3253521.14	1577295.84	40.9144462	-104.5827473	0.00	
2522.00†	12.000	94.067	2484.00	55.14	-27.63	388.53	3253541.89	1577294.58	40.9144422	-104.5826723	0.00	
2622.00†	12.000	94.067	2581.81	58.09	-29.10	409.27	3253562.65	1577293.32	40.9144381	-104.5825972	0.00	
2722.00†	12.000	94.067	2679.63	61.03	-30.58	430.01	3253583.40	1577292.06	40.9144341	-104.5825222	0.00	
2822.00†	12.000	94.067	2777.44	63.97	-32.05	450.75	3253604.15	1577290.80	40.9144300	-104.5824472	0.00	
2922.00†	12.000	94.067	2875.26	66.92	-33.53	471.49	3253624.91	1577289.54	40.9144260	-104.5823721	0.00	
3022.00†	12.000	94.067	2973.07	69.86	-35.00	492.23	3253645.66	1577288.28	40.9144219	-104.5822971	0.00	
3101.41	12.000	94.067	3050.75	72.20	-36.17	508.70	3253662.14	1577287.28	40.9144187	-104.5822375	0.00	End of Tangent (J)
3122.00†	11.588	94.067	3070.90	72.80	-36.47	512.90	3253666.34	1577287.03	40.9144179	-104.5822223	2.00	
3222.00†	9.588	94.067	3169.19	75.40	-37.77	531.22	3253684.68	1577285.91	40.9144143	-104.5821560	2.00	
3322.00†	7.588	94.067	3268.07	77.51	-38.83	546.12	3253699.59	1577285.01	40.9144114	-104.5821021	2.00	
3422.00†	5.588	94.067	3367.40	79.13	-39.65	557.56	3253711.04	1577284.31	40.9144092	-104.5820607	2.00	
3522.00†	3.588	94.067	3467.08	80.27	-40.21	565.54	3253719.02	1577283.83	40.9144076	-104.5820318	2.00	
3622.00†	1.588	94.067	3566.97	80.91	-40.53	570.04	3253723.53	1577283.55	40.9144067	-104.5820155	2.00	
3701.41	0.000	177.372	3646.37	81.06	-40.61	571.14	3253724.63	1577283.48	40.9144065	-104.5820116	2.00	Drop (XS)
3722.00†	0.000	177.372	3666.96	81.06	-40.61	571.14	3253724.63	1577283.48	40.9144065	-104.5820116	0.00	
3822.00†	0.000	177.372	3766.96	81.06	-40.61	571.14	3253724.63	1577283.48	40.9144065	-104.5820116	0.00	
3922.00†	0.000	177.372	3866.96	81.06	-40.61	571.14	3253724.63	1577283.48	40.9144065	-104.5820116	0.00	

Planned Wellpath Report

SALT RANCH FEE 201-1830H PWP Rev-C.0

Page 3 of 8

REFERENCE WELLPATH IDENTIFICATION

Operator	CCRP OPERATING INC.	Well	SALT RANCH FEE 201-1830H
Field	WELD COUNTY (NAD 83/TN)	API/Legal	
Facility	SEC.18-T11N-R64W	Wellbore	SALT RANCH FEE 201-1830H PWB
Slot	SLOT#02 SALT RANCH FEE 201-1830H (332'FSL & 953'FEL, SEC.18)		

WELLPATH DATA (194 stations) † = interpolated, ‡ = extrapolated station

MD [ft]	Inclination [°]	Azimuth [°]	TVD [ft]	Vert Sect [ft]	North [ft]	East [ft]	Grid East [US ft]	Grid North [US ft]	Latitude	Longitude	DLS [°/100ft]	Comments
4022.00†	0.000	177.372	3966.96	81.06	-40.61	571.14	3253724.63	1577283.48	40.9144065	-104.5820116	0.00	
4122.00†	0.000	177.372	4066.96	81.06	-40.61	571.14	3253724.63	1577283.48	40.9144065	-104.5820116	0.00	
4222.00†	0.000	177.372	4166.96	81.06	-40.61	571.14	3253724.63	1577283.48	40.9144065	-104.5820116	0.00	
4322.00†	0.000	177.372	4266.96	81.06	-40.61	571.14	3253724.63	1577283.48	40.9144065	-104.5820116	0.00	
4422.00†	0.000	177.372	4366.96	81.06	-40.61	571.14	3253724.63	1577283.48	40.9144065	-104.5820116	0.00	
4522.00†	0.000	177.372	4466.96	81.06	-40.61	571.14	3253724.63	1577283.48	40.9144065	-104.5820116	0.00	
4622.00†	0.000	177.372	4566.96	81.06	-40.61	571.14	3253724.63	1577283.48	40.9144065	-104.5820116	0.00	
4722.00†	0.000	177.372	4666.96	81.06	-40.61	571.14	3253724.63	1577283.48	40.9144065	-104.5820116	0.00	
4822.00†	0.000	177.372	4766.96	81.06	-40.61	571.14	3253724.63	1577283.48	40.9144065	-104.5820116	0.00	
4922.00†	0.000	177.372	4866.96	81.06	-40.61	571.14	3253724.63	1577283.48	40.9144065	-104.5820116	0.00	
5022.00†	0.000	177.372	4966.96	81.06	-40.61	571.14	3253724.63	1577283.48	40.9144065	-104.5820116	0.00	
5122.00†	0.000	177.372	5066.96	81.06	-40.61	571.14	3253724.63	1577283.48	40.9144065	-104.5820116	0.00	
5222.00†	0.000	177.372	5166.96	81.06	-40.61	571.14	3253724.63	1577283.48	40.9144065	-104.5820116	0.00	
5322.00†	0.000	177.372	5266.96	81.06	-40.61	571.14	3253724.63	1577283.48	40.9144065	-104.5820116	0.00	
5422.00†	0.000	177.372	5366.96	81.06	-40.61	571.14	3253724.63	1577283.48	40.9144065	-104.5820116	0.00	
5522.00†	0.000	177.372	5466.96	81.06	-40.61	571.14	3253724.63	1577283.48	40.9144065	-104.5820116	0.00	
5622.00†	0.000	177.372	5566.96	81.06	-40.61	571.14	3253724.63	1577283.48	40.9144065	-104.5820116	0.00	
5722.00†	0.000	177.372	5666.96	81.06	-40.61	571.14	3253724.63	1577283.48	40.9144065	-104.5820116	0.00	
5822.00†	0.000	177.372	5766.96	81.06	-40.61	571.14	3253724.63	1577283.48	40.9144065	-104.5820116	0.00	
5922.00†	0.000	177.372	5866.96	81.06	-40.61	571.14	3253724.63	1577283.48	40.9144065	-104.5820116	0.00	
6022.00†	0.000	177.372	5966.96	81.06	-40.61	571.14	3253724.63	1577283.48	40.9144065	-104.5820116	0.00	
6122.00†	0.000	177.372	6066.96	81.06	-40.61	571.14	3253724.63	1577283.48	40.9144065	-104.5820116	0.00	
6222.00†	0.000	177.372	6166.96	81.06	-40.61	571.14	3253724.63	1577283.48	40.9144065	-104.5820116	0.00	
6322.00†	0.000	177.372	6266.96	81.06	-40.61	571.14	3253724.63	1577283.48	40.9144065	-104.5820116	0.00	
6422.00†	0.000	177.372	6366.96	81.06	-40.61	571.14	3253724.63	1577283.48	40.9144065	-104.5820116	0.00	
6522.00†	0.000	177.372	6466.96	81.06	-40.61	571.14	3253724.63	1577283.48	40.9144065	-104.5820116	0.00	
6622.00†	0.000	177.372	6566.96	81.06	-40.61	571.14	3253724.63	1577283.48	40.9144065	-104.5820116	0.00	
6722.00†	0.000	177.372	6666.96	81.06	-40.61	571.14	3253724.63	1577283.48	40.9144065	-104.5820116	0.00	
6822.00†	0.000	177.372	6766.96	81.06	-40.61	571.14	3253724.63	1577283.48	40.9144065	-104.5820116	0.00	
6922.00†	0.000	177.372	6866.96	81.06	-40.61	571.14	3253724.63	1577283.48	40.9144065	-104.5820116	0.00	
7022.00†	0.000	177.372	6966.96	81.06	-40.61	571.14	3253724.63	1577283.48	40.9144065	-104.5820116	0.00	
7122.00†	0.000	177.372	7066.96	81.06	-40.61	571.14	3253724.63	1577283.48	40.9144065	-104.5820116	0.00	
7222.00†	0.000	177.372	7166.96	81.06	-40.61	571.14	3253724.63	1577283.48	40.9144065	-104.5820116	0.00	
7322.00†	0.000	177.372	7266.96	81.06	-40.61	571.14	3253724.63	1577283.48	40.9144065	-104.5820116	0.00	
7422.00†	0.000	177.372	7366.96	81.06	-40.61	571.14	3253724.63	1577283.48	40.9144065	-104.5820116	0.00	
7491.09	0.000	177.372	7436.05	81.06	-40.61	571.14	3253724.63	1577283.48	40.9144065	-104.5820116	0.00	KOP
7522.00†	3.091	177.372	7466.94	81.90	-41.44	571.18	3253724.68	1577282.65	40.9144042	-104.5820114	10.00	
7622.00†	13.091	177.372	7565.82	95.95	-55.49	571.83	3253725.47	1577268.62	40.9143657	-104.5820091	10.00	
7722.00†	23.091	177.372	7660.76	126.95	-86.47	573.25	3253727.21	1577237.65	40.9142807	-104.5820040	10.00	
7822.00†	33.091	177.372	7748.87	173.96	-133.44	575.40	3253729.85	1577190.70	40.9141517	-104.5819962	10.00	
7922.00†	43.091	177.372	7827.47	235.55	-194.99	578.23	3253733.31	1577129.18	40.9139828	-104.5819859	10.00	
8022.00†	53.091	177.372	7894.18	309.86	-269.24	581.64	3253737.48	1577054.97	40.9137790	-104.5819736	10.00	
8122.00†	63.091	177.372	7946.97	394.61	-353.93	585.52	3253742.25	1576970.33	40.9135466	-104.5819596	10.00	
8222.00†	73.091	177.372	7984.24	487.24	-446.49	589.77	3253747.45	1576877.81	40.9132925	-104.5819442	10.00	
8322.00†	83.091	177.372	8004.85	584.93	-544.11	594.25	3253752.94	1576780.24	40.9130246	-104.5819280	10.00	

Planned Wellpath Report

SALT RANCH FEE 201-1830H PWP Rev-C.0

Page 4 of 8

REFERENCE WELLPATH IDENTIFICATION

Operator	CCRP OPERATING INC.	Well	SALT RANCH FEE 201-1830H
Field	WELD COUNTY (NAD 83/TN)	API/Legal	
Facility	SEC.18-T11N-R64W	Wellbore	SALT RANCH FEE 201-1830H PWB
Slot	SLOT#02 SALT RANCH FEE 201-1830H (332'FSL & 953'FEL, SEC.18)		

WELLPATH DATA (194 stations) † = interpolated, ‡ = extrapolated station

MD [ft]	Inclination [°]	Azimuth [°]	TVD [ft]	Vert Sect [ft]	North [ft]	East [ft]	Grid East [US ft]	Grid North [US ft]	Latitude	Longitude	DLS [°/100ft]	Comments
8394.59	90.350	177.372	8009.00†	657.34	-616.46	597.57	3253757.01	1576707.92	40.9128260	-104.5819160	10.00	LANDING
8422.00†	90.350	177.372	8008.83	684.73	-643.84	598.83	3253758.55	1576680.56	40.9127509	-104.5819115	0.00	
8522.00†	90.350	177.372	8008.22	784.70	-743.73	603.41	3253764.16	1576580.72	40.9124767	-104.5818949	0.00	
8622.00†	90.350	177.372	8007.61	884.67	-843.63	608.00	3253769.78	1576480.88	40.9122025	-104.5818783	0.00	
8722.00†	90.350	177.372	8007.00	984.63	-943.52	612.58	3253775.39	1576381.03	40.9119283	-104.5818617	0.00	
8822.00†	90.350	177.372	8006.39	1084.60	-1043.41	617.17	3253781.01	1576281.19	40.9116542	-104.5818451	0.00	
8922.00†	90.350	177.372	8005.78	1184.57	-1143.31	621.75	3253786.63	1576181.35	40.9113800	-104.5818286	0.00	
9022.00†	90.350	177.372	8005.17	1284.53	-1243.20	626.34	3253792.24	1576081.51	40.9111058	-104.5818120	0.00	
9122.00†	90.350	177.372	8004.56	1384.50	-1343.09	630.92	3253797.86	1575981.66	40.9108317	-104.5817954	0.00	
9222.00†	90.350	177.372	8003.95	1484.46	-1442.98	635.50	3253803.48	1575881.82	40.9105575	-104.5817788	0.00	
9322.00†	90.350	177.372	8003.34	1584.43	-1542.88	640.09	3253809.09	1575781.98	40.9102833	-104.5817623	0.00	
9422.00†	90.350	177.372	8002.72	1684.40	-1642.77	644.67	3253814.71	1575682.14	40.9100091	-104.5817457	0.00	
9522.00†	90.350	177.372	8002.11	1784.36	-1742.66	649.26	3253820.32	1575582.29	40.9097350	-104.5817291	0.00	
9622.00†	90.350	177.372	8001.50	1884.33	-1842.56	653.84	3253825.94	1575482.45	40.9094608	-104.5817125	0.00	
9722.00†	90.350	177.372	8000.89	1984.30	-1942.45	658.43	3253831.56	1575382.61	40.9091866	-104.5816960	0.00	
9822.00†	90.350	177.372	8000.28	2084.26	-2042.34	663.01	3253837.17	1575282.77	40.9089124	-104.5816794	0.00	
9922.00†	90.350	177.372	7999.67	2184.23	-2142.24	667.60	3253842.79	1575182.92	40.9086383	-104.5816628	0.00	
10022.00†	90.350	177.372	7999.06	2284.20	-2242.13	672.18	3253848.41	1575083.08	40.9083641	-104.5816462	0.00	
10122.00†	90.350	177.372	7998.45	2384.16	-2342.02	676.77	3253854.02	1574983.24	40.9080899	-104.5816296	0.00	
10222.00†	90.350	177.372	7997.84	2484.13	-2441.91	681.35	3253859.64	1574883.40	40.9078158	-104.5816131	0.00	
10322.00†	90.350	177.372	7997.23	2584.10	-2541.81	685.93	3253865.25	1574783.55	40.9075416	-104.5815965	0.00	
10422.00†	90.350	177.372	7996.62	2684.06	-2641.70	690.52	3253870.87	1574683.71	40.9072674	-104.5815799	0.00	
10522.00†	90.350	177.372	7996.01	2784.03	-2741.59	695.10	3253876.49	1574583.87	40.9069932	-104.5815633	0.00	
10622.00†	90.350	177.372	7995.39	2883.99	-2841.49	699.69	3253882.10	1574484.03	40.9067191	-104.5815468	0.00	
10722.00†	90.350	177.372	7994.78	2983.96	-2941.38	704.27	3253887.72	1574384.18	40.9064449	-104.5815302	0.00	
10822.00†	90.350	177.372	7994.17	3083.93	-3041.27	708.86	3253893.34	1574284.34	40.9061707	-104.5815136	0.00	
10922.00†	90.350	177.372	7993.56	3183.89	-3141.17	713.44	3253898.95	1574184.50	40.9058965	-104.5814970	0.00	
11022.00†	90.350	177.372	7992.95	3283.86	-3241.06	718.03	3253904.57	1574084.66	40.9056224	-104.5814805	0.00	
11122.00†	90.350	177.372	7992.34	3383.83	-3340.95	722.61	3253910.18	1573984.81	40.9053482	-104.5814639	0.00	
11222.00†	90.350	177.372	7991.73	3483.79	-3440.84	727.20	3253915.80	1573884.97	40.9050740	-104.5814473	0.00	
11322.00†	90.350	177.372	7991.12	3583.76	-3540.74	731.78	3253921.42	1573785.13	40.9047999	-104.5814307	0.00	
11422.00†	90.350	177.372	7990.51	3683.73	-3640.63	736.36	3253927.03	1573685.29	40.9045257	-104.5814142	0.00	
11522.00†	90.350	177.372	7989.90	3783.69	-3740.52	740.95	3253932.65	1573585.44	40.9042515	-104.5813976	0.00	
11622.00†	90.350	177.372	7989.29	3883.66	-3840.42	745.53	3253938.27	1573485.60	40.9039773	-104.5813810	0.00	
11722.00†	90.350	177.372	7988.68	3983.62	-3940.31	750.12	3253943.88	1573385.76	40.9037032	-104.5813645	0.00	
11822.00†	90.350	177.372	7988.07	4083.59	-4040.20	754.70	3253949.50	1573285.92	40.9034290	-104.5813479	0.00	
11922.00†	90.350	177.372	7987.45	4183.56	-4140.10	759.29	3253955.11	1573186.07	40.9031548	-104.5813313	0.00	
12022.00†	90.350	177.372	7986.84	4283.52	-4239.99	763.87	3253960.73	1573086.23	40.9028806	-104.5813147	0.00	
12122.00†	90.350	177.372	7986.23	4383.49	-4339.88	768.46	3253966.35	1572986.39	40.9026065	-104.5812982	0.00	
12222.00†	90.350	177.372	7985.62	4483.46	-4439.77	773.04	3253971.96	1572886.55	40.9023323	-104.5812816	0.00	
12322.00†	90.350	177.372	7985.01	4583.42	-4539.67	777.63	3253977.58	1572786.70	40.9020581	-104.5812650	0.00	
12422.00†	90.350	177.372	7984.40	4683.39	-4639.56	782.21	3253983.19	1572686.86	40.9017839	-104.5812484	0.00	
12522.00†	90.350	177.372	7983.79	4783.36	-4739.45	786.80	3253988.81	1572587.02	40.9015098	-104.5812319	0.00	
12622.00†	90.350	177.372	7983.18	4883.32	-4839.35	791.38	3253994.43	1572487.18	40.9012356	-104.5812153	0.00	
12722.00†	90.350	177.372	7982.57	4983.29	-4939.24	795.96	3254000.04	1572387.33	40.9009614	-104.5811987	0.00	

Planned Wellpath Report

SALT RANCH FEE 201-1830H PWP Rev-C.0

Page 5 of 8

REFERENCE WELLPATH IDENTIFICATION

Operator	CCRP OPERATING INC.	Well	SALT RANCH FEE 201-1830H
Field	WELD COUNTY (NAD 83/TN)	API/Legal	
Facility	SEC.18-T11N-R64W	Wellbore	SALT RANCH FEE 201-1830H PWB
Slot	SLOT#02 SALT RANCH FEE 201-1830H (332'FSL & 953'FEL, SEC.18)		

WELLPATH DATA (194 stations) † = interpolated, ‡ = extrapolated station

MD [ft]	Inclination [°]	Azimuth [°]	TVD [ft]	Vert Sect [ft]	North [ft]	East [ft]	Grid East [US ft]	Grid North [US ft]	Latitude	Longitude	DLS [°/100ft]	Comments
12822.00†	90.350	177.372	7981.96	5083.25	-5039.13	800.55	3254005.66	1572287.49	40.9006873	-104.5811822	0.00	
12922.00†	90.350	177.372	7981.35	5183.22	-5139.03	805.13	3254011.28	1572187.65	40.9004131	-104.5811656	0.00	
13022.00†	90.350	177.372	7980.74	5283.19	-5238.92	809.72	3254016.89	1572087.81	40.9001389	-104.5811490	0.00	
13122.00†	90.350	177.372	7980.12	5383.15	-5338.81	814.30	3254022.51	1571987.96	40.8998647	-104.5811324	0.00	
13222.00†	90.350	177.372	7979.51	5483.12	-5438.70	818.89	3254028.12	1571888.12	40.8995906	-104.5811159	0.00	
13322.00†	90.350	177.372	7978.90	5583.09	-5538.60	823.47	3254033.74	1571788.28	40.8993164	-104.5810993	0.00	
13396.18	90.350	177.372	7978.45‡	5657.24	-5612.70	826.87	3254037.91	1571714.21	40.8991130	-104.5810870	0.00	WP
13422.00†	90.350	177.889	7978.29	5683.05	-5638.50	827.94	3254039.24	1571688.43	40.8990422	-104.5810831	2.00	
13522.00†	90.350	179.889	7977.68	5782.91	-5738.47	829.88	3254042.21	1571588.48	40.8987678	-104.5810761	2.00	
13572.58	90.350	180.900	7977.37	5833.33	-5789.04	829.53	3254042.39	1571537.90	40.8986290	-104.5810774	2.00	3D Arc (J)
13622.00†	90.350	180.900	7977.07	5882.57	-5838.46	828.76	3254042.12	1571488.48	40.8984934	-104.5810802	0.00	
13722.00†	90.350	180.900	7976.46	5982.19	-5938.45	827.18	3254041.58	1571388.48	40.8982189	-104.5810859	0.00	
13822.00†	90.350	180.900	7975.85	6081.81	-6038.43	825.61	3254041.04	1571288.48	40.8979445	-104.5810916	0.00	
13922.00†	90.350	180.900	7975.24	6181.43	-6138.42	824.04	3254040.51	1571188.48	40.8976701	-104.5810973	0.00	
14022.00†	90.350	180.900	7974.62	6281.06	-6238.40	822.47	3254039.97	1571088.49	40.8973957	-104.5811030	0.00	
14122.00†	90.350	180.900	7974.01	6380.68	-6338.39	820.90	3254039.43	1570988.49	40.8971212	-104.5811087	0.00	
14222.00†	90.350	180.900	7973.40	6480.30	-6438.37	819.33	3254038.89	1570888.49	40.8968468	-104.5811144	0.00	
14322.00†	90.350	180.900	7972.79	6579.92	-6538.36	817.76	3254038.35	1570788.49	40.8965724	-104.5811201	0.00	
14422.00†	90.350	180.900	7972.18	6679.54	-6638.35	816.19	3254037.82	1570688.49	40.8962979	-104.5811258	0.00	
14522.00†	90.350	180.900	7971.57	6779.16	-6738.33	814.62	3254037.28	1570588.49	40.8960235	-104.5811315	0.00	
14622.00†	90.350	180.900	7970.96	6878.79	-6838.32	813.04	3254036.74	1570488.49	40.8957491	-104.5811372	0.00	
14722.00†	90.350	180.900	7970.35	6978.41	-6938.30	811.47	3254036.20	1570388.49	40.8954747	-104.5811429	0.00	
14822.00†	90.350	180.900	7969.73	7078.03	-7038.29	809.90	3254035.66	1570288.49	40.8952002	-104.5811486	0.00	
14922.00†	90.350	180.900	7969.12	7177.65	-7138.27	808.33	3254035.12	1570188.50	40.8949258	-104.5811543	0.00	
15022.00†	90.350	180.900	7968.51	7277.27	-7238.26	806.76	3254034.59	1570088.50	40.8946514	-104.5811599	0.00	
15122.00†	90.350	180.900	7967.90	7376.90	-7338.25	805.19	3254034.05	1569988.50	40.8943769	-104.5811656	0.00	
15222.00†	90.350	180.900	7967.29	7476.52	-7438.23	803.62	3254033.51	1569888.50	40.8941025	-104.5811713	0.00	
15322.00†	90.350	180.900	7966.68	7576.14	-7538.22	802.05	3254032.97	1569788.50	40.8938281	-104.5811770	0.00	
15422.00†	90.350	180.900	7966.07	7675.76	-7638.20	800.48	3254032.43	1569688.50	40.8935537	-104.5811827	0.00	
15522.00†	90.350	180.900	7965.46	7775.38	-7738.19	798.90	3254031.89	1569588.50	40.8932792	-104.5811884	0.00	
15622.00†	90.350	180.900	7964.84	7875.01	-7838.18	797.33	3254031.36	1569488.50	40.8930048	-104.5811941	0.00	
15722.00†	90.350	180.900	7964.23	7974.63	-7938.16	795.76	3254030.82	1569388.50	40.8927304	-104.5811998	0.00	
15822.00†	90.350	180.900	7963.62	8074.25	-8038.15	794.19	3254030.28	1569288.51	40.8924559	-104.5812055	0.00	
15922.00†	90.350	180.900	7963.01	8173.87	-8138.13	792.62	3254029.74	1569188.51	40.8921815	-104.5812112	0.00	
16022.00†	90.350	180.900	7962.40	8273.49	-8238.12	791.05	3254029.20	1569088.51	40.8919071	-104.5812169	0.00	
16122.00†	90.350	180.900	7961.79	8373.11	-8338.10	789.48	3254028.66	1568988.51	40.8916327	-104.5812226	0.00	
16222.00†	90.350	180.900	7961.18	8472.74	-8438.09	787.91	3254028.13	1568888.51	40.8913582	-104.5812283	0.00	
16322.00†	90.350	180.900	7960.56	8572.36	-8538.08	786.34	3254027.59	1568788.51	40.8910838	-104.5812340	0.00	
16422.00†	90.350	180.900	7959.95	8671.98	-8638.06	784.76	3254027.05	1568688.51	40.8908094	-104.5812397	0.00	
16522.00†	90.350	180.900	7959.34	8771.60	-8738.05	783.19	3254026.51	1568588.51	40.8905349	-104.5812454	0.00	
16622.00†	90.350	180.900	7958.73	8871.22	-8838.03	781.62	3254025.97	1568488.51	40.8902605	-104.5812511	0.00	
16722.00†	90.350	180.900	7958.12	8970.85	-8938.02	780.05	3254025.43	1568388.52	40.8899861	-104.5812567	0.00	
16822.00†	90.350	180.900	7957.51	9070.47	-9038.00	778.48	3254024.90	1568288.52	40.8897117	-104.5812624	0.00	
16922.00†	90.350	180.900	7956.90	9170.09	-9137.99	776.91	3254024.36	1568188.52	40.8894372	-104.5812681	0.00	
17022.00†	90.350	180.900	7956.29	9269.71	-9237.98	775.34	3254023.82	1568088.52	40.8891628	-104.5812738	0.00	

REFERENCE WELLPATH IDENTIFICATION

Operator	CCRP OPERATING INC.	Well	SALT RANCH FEE 201-1830H
Field	WELD COUNTY (NAD 83/TN)	API/Legal	
Facility	SEC.18-T11N-R64W	Wellbore	SALT RANCH FEE 201-1830H PWB
Slot	SLOT#02 SALT RANCH FEE 201-1830H (332'FSL & 953'FEL, SEC.18)		

WELLPATH DATA (194 stations) † = interpolated, ‡ = extrapolated station

MD [ft]	Inclination [°]	Azimuth [°]	TVD [ft]	Vert Sect [ft]	North [ft]	East [ft]	Grid East [US ft]	Grid North [US ft]	Latitude	Longitude	DLS [°/100ft]	Comments
17122.00†	90.350	180.900	7955.67	9369.33	-9337.96	773.77	3254023.28	1567988.52	40.8888884	-104.5812795	0.00	
17222.00†	90.350	180.900	7955.06	9468.96	-9437.95	772.20	3254022.74	1567888.52	40.8886139	-104.5812852	0.00	
17322.00†	90.350	180.900	7954.45	9568.58	-9537.93	770.62	3254022.20	1567788.52	40.8883395	-104.5812909	0.00	
17422.00†	90.350	180.900	7953.84	9668.20	-9637.92	769.05	3254021.67	1567688.52	40.8880651	-104.5812966	0.00	
17522.00†	90.350	180.900	7953.23	9767.82	-9737.91	767.48	3254021.13	1567588.52	40.8877907	-104.5813023	0.00	
17622.00†	90.350	180.900	7952.62	9867.44	-9837.89	765.91	3254020.59	1567488.53	40.8875162	-104.5813080	0.00	
17722.00†	90.350	180.900	7952.01	9967.07	-9937.88	764.34	3254020.05	1567388.53	40.8872418	-104.5813137	0.00	
17822.00†	90.350	180.900	7951.40	10066.69	-10037.86	762.77	3254019.51	1567288.53	40.8869674	-104.5813194	0.00	
17922.00†	90.350	180.900	7950.78	10166.31	-10137.85	761.20	3254018.98	1567188.53	40.8866929	-104.5813251	0.00	
18022.00†	90.350	180.900	7950.17	10265.93	-10237.83	759.63	3254018.44	1567088.53	40.8864185	-104.5813308	0.00	
18122.00†	90.350	180.900	7949.56	10365.55	-10337.82	758.06	3254017.90	1566988.53	40.8861441	-104.5813365	0.00	
18222.00†	90.350	180.900	7948.95	10465.17	-10437.81	756.48	3254017.36	1566888.53	40.8858697	-104.5813421	0.00	
18322.00†	90.350	180.900	7948.34	10564.80	-10537.79	754.91	3254016.82	1566788.53	40.8855952	-104.5813478	0.00	
18377.47	90.350	180.900	7948.00 [‡]	10620.06	-10593.25	754.04	3254016.52	1566733.07	40.8854430	-104.5813510	0.00	TD

REFERENCE WELLPATH IDENTIFICATION

Operator	CCRP OPERATING INC.	Well	SALT RANCH FEE 201-1830H
Field	WELD COUNTY (NAD 83/TN)	API/Legal	
Facility	SEC.18-T11N-R64W	Wellbore	SALT RANCH FEE 201-1830H PWB
Slot	SLOT#02 SALT RANCH FEE 201-1830H (332'FSL & 953'FEL, SEC.18)		

TARGETS

Name	MD [ft]	TVD [ft]	North [ft]	East [ft]	Grid East [US ft]	Grid North [US ft]	Latitude	Longitude	Shape
SEC.19-T11N-R64W	N/A	0.00	-0.36	14.93	3253168.01	1577317.99	40.9145170	-104.5840240	polygon
2D Polygon: dimensions not calculated									
SEC.30-T11N-R64W	N/A	0.00	-0.36	14.93	3253168.01	1577317.99	40.9145170	-104.5840240	polygon
2D Polygon: dimensions not calculated									
SALT RANCH FEE 201-1830H BHL REV-2 (300'FSL & 350'FEL, SEC.30)	N/A	7943.90	-10593.25	754.04	3254016.52	1566733.07	40.8854430	-104.5813510	point
3) SALT RANCH FEE 201-1830H BHL REV-3 (300'FSL & 350'FEL, SEC.30)	18377.47	7948.00	-10593.25	754.04	3254016.52	1566733.07	40.8854430	-104.5813510	point
SALT RANCH FEE 201-1830H BHL REV-1 (300'FSL & 350'FEL, SEC.30)	N/A	7949.00	-10593.25	754.04	3254016.52	1566733.07	40.8854430	-104.5813510	point
2) SALT RANCH FEE 201-1830H WP REV-1 (0'FSL & 350'FEL, SEC.19)	13396.18	7978.45	-5612.70	826.87	3254037.91	1571714.21	40.8991130	-104.5810870	point
SALT RANCH FEE 201-1830H LP REV-2 (300'FNL & 350'FEL, SEC.19)	N/A	8001.90	-616.46	597.57	3253757.01	1576707.92	40.9128260	-104.5819160	point
SALT RANCH FEE 201-1830H LP REV-1 (300'FNL & 350'FEL, SEC.19)	N/A	8006.00	-616.46	597.57	3253757.01	1576707.92	40.9128260	-104.5819160	point
1) SALT RANCH FEE 201-1830H LP REV-3 (300'FNL & 350'FEL, SEC.19)	8394.59	8009.00	-616.46	597.57	3253757.01	1576707.92	40.9128260	-104.5819160	point
SEC.19/30-T11N-R64W HARDLINES (300' SETBACKS)	N/A	8010.00	-0.36	14.93	3253168.01	1577317.99	40.9145170	-104.5840240	polygon
2D Polygon: dimensions not calculated									

SURVEY PROGRAM -

Ref Wellbore: SALT RANCH FEE 201-1830H PWB Ref Wellpath: SALT RANCH FEE 201-1830H PWP Rev-C.0

Start MD [ft]	End MD [ft]	Positional Uncertainty Model	Log Name/Comment	Wellbore
22.00	1950.00	BH NaviTrak (2019) (Axial)		SALT RANCH FEE 201-1830H PWB
1950.00	18377.47	BH AutoTrak Curve/eXpress (2019) (Short spacing)		SALT RANCH FEE 201-1830H PWB

Planned Wellpath Report

SALT RANCH FEE 201-1830H PWP Rev-C.0

Page 8 of 8

REFERENCE WELLPATH IDENTIFICATION

Operator	CCRP OPERATING INC.	Well	SALT RANCH FEE 201-1830H
Field	WELD COUNTY (NAD 83/TN)	API/Legal	
Facility	SEC.18-T11N-R64W	Wellbore	SALT RANCH FEE 201-1830H PWB
Slot	SLOT#02 SALT RANCH FEE 201-1830H (332'FSL & 953'FEL, SEC.18)		

DESIGN COMMENTS

MD [ft]	Inclination [°]	Azimuth [°]	TVD [ft]	Comment
22.00	0.000	94.067	22.00	Tie On
250.00	0.000	94.067	250.00	End of Tangent
1050.00	12.000	94.067	1044.16	End of Build (J)
3101.41	12.000	94.067	3050.75	End of Tangent (J)
3701.41	0.000	177.372	3646.37	Drop (XS)
7491.09	0.000	177.372	7436.05	KOP
8394.59	90.350	177.372	8009.00	LANDING
13396.18	90.350	177.372	7978.45	WP
13572.58	90.350	180.900	7977.37	3D Arc (J)
18377.47	90.350	180.900	7948.00	TD

Closest Approach Clearance Summary Report

SALT RANCH FEE 201-1830H PWP Rev-C.0 - SPE WPTS
Stop Drilling HSE Risk (2017)
Page 1 of 2

REFERENCE WELLPATH IDENTIFICATION

Operator	CCRP OPERATING INC.	Well	SALT RANCH FEE 201-1830H
Field	WELD COUNTY (NAD 83/TN)	API/Legal	
Facility	SEC.18-T11N-R64W	Wellbore	SALT RANCH FEE 201-1830H PWB
Slot	SLOT#02 SALT RANCH FEE 201-1830H (332'FSL & 953'FEL, SEC.18)		

REPORT SETUP INFORMATION

Projection System	NAD83 / Lambert Colorado SP, Northern Zone (501), US feet	Software System	WellArchitect® 6.0
North Reference	True	User	Painsetr
Scale	1.000024	Report Generated	9/23/2020 at 6:12:19 AM
Convergence at slot	0.59° East	Database	WellArchitectDB

WELLPATH LOCATION

	Local coordinates		Grid coordinates		Geographic coordinates	
	North[ft]	East[ft]	Easting[US ft]	Northing[US ft]	Latitude	Longitude
Slot Location	9.90	22.66	3253153.09	1577318.20	40.9145180°	-104.5840780°
Facility Reference Pt			3253130.53	1577308.07	40.9144908°	-104.5841600°
Field Reference Pt			3242001.26	1607883.12	40.9987100°	-104.6233300°

WELLPATH DATUM

Calculation method	Minimum Curvature	RIG (22') (RKB) to Facility Vertical Datum	5626.00ft
Horizontal Reference Pt	Slot	RIG (22') (RKB) to Mean Sea Level	5626.00ft
Vertical Reference Pt	RIG (22') (RKB)	RIG (22') (RKB) to Mud Line at Slot (SLOT#02 SALT RANCH FEE 201-1830H (332'FSL & 953'FEL, SEC.18))	5626.00ft
MD Reference Pt	RIG (22') (RKB)		
Field Vertical Reference	Mean Sea Level		

POSITIONAL UNCERTAINTY CALCULATION SETTINGS

Ellipse Confidence Limit	3.50 Std Dev	Ellipse Start MD	22.00ft	Surface Position Uncertainty	included
Declination	8.12° East of TN	Dip Angle	67.21°	Mag Field Strength	52465 nT
Slot Surface Uncertainty @1SD		Horizontal	0.100ft	Vertical	1.000ft
Facility Surface Uncertainty @1SD		Horizontal	8.200ft	Vertical	3.000ft
Positional Uncertainty values in the WELLPATH DATA table are the projection of the ellipsoid of uncertainty onto the vertical and horizontal planes					

Closest Approach Clearance Summary Report

**SALT RANCH FEE 201-1830H PWP Rev-C.0 - SPE WPTS
Stop Drilling HSE Risk (2017)**

Page 2 of 2

REFERENCE WELLPATH IDENTIFICATION			
Operator	CCRP OPERATING INC.	Well	SALT RANCH FEE 201-1830H
Field	WELD COUNTY (NAD 83/TN)	API/Legal	
Facility	SEC.18-T11N-R64W	Wellbore	SALT RANCH FEE 201-1830H PWB
Slot	SLOT#02 SALT RANCH FEE 201-1830H (332'FSL & 953'FEL, SEC.18)		

PROXIMITY-SCAN RULE			
Rule Name	SPE WPTS Stop Drilling HSE Risk (2017)	Rule Based On	Ratio
Plane of Rule	Closest Approach	Threshold Value	1.00
Include Casing & Hole Size	yes	Apply Cone of Safety	no

SURVEY PROGRAM -				
Ref Wellbore: SALT RANCH FEE 201-1830H PWB		Ref Wellpath: SALT RANCH FEE 201-1830H PWP Rev-C.0		
Start MD [ft]	End MD [ft]	Positional Uncertainty Model	Log Name/Comment	Wellbore
22.00	1950.00	BH NaviTrak (2019) (Axial)		SALT RANCH FEE 201-1830H PWB
1950.00	18377.47	BH AutoTrak Curve/eXpress (2019) (Short spacing)		SALT RANCH FEE 201-1830H PWB

CALCULATION RANGE & CUTOFF		
From: 22.00ft MD	To: 18377.47ft MD	C-C Cutoff: (none)

OFFSET WELL CLEARANCE SUMMARY (7 Offset Wellpaths selected) Ratios are calculated in Closest Approach plane													
Offset Facility	Offset Slot	Offset Well	Offset Wellbore	Offset Wellpath	Wellbore Status	C-C Clearance Distance			Rule Separation Ratio				
						Ref MD [ft]	Min C-C Clear Dist [ft]	Diverging from MD [ft]	Ref MD of Min Ratio [ft]	Min Ratio	Min Ratio Dvrg from [ft]	Rule Status	
SEC.18-T11N-R64W	SLOT#01 SALT RANCH FEE 201-1807H (331'FSL & 938'FEL, SEC.18)	SALT RANCH FEE 201-1807H	SALT RANCH FEE 201-1807H PWB	SALT RANCH FEE 201-1807H PWP Rev-C.0	Planned	502.66	13.40	8067.09	8067.09	1.05	8067.09	WARN	
SEC.18-T11N-R64W	SLOT#04 SALT RANCH FEE 501-1830H (333'FSL & 983'FEL, SEC.18)	SALT RANCH FEE 501-1830H	SALT RANCH FEE 501-1830H PWB	SALT RANCH FEE 501-1830H PWP Rev-C.0	Planned	22.00	30.13	18377.47	18377.47	1.76	18377.47	PASS	
SEC.18-T11N-R64W	SLOT#03 SALT RANCH FEE 501-1807H (333'FSL & 968'FEL, SEC.18)	SALT RANCH FEE 501-1807H	SALT RANCH FEE 501-1807H PWB	SALT RANCH FEE 501-1807H PWP Rev-C.0	Planned	22.00	14.93	8222.00	265.78	1.81	8222.00	PASS	
SEC.18-T11N-R64W	SLOT#06 SALT RANCH FEE 202-1830H (334'FSL & 1013'FEL, SEC.18)	SALT RANCH FEE 202-1830H	SALT RANCH FEE 202-1830H PWB	SALT RANCH FEE 202-1830H PWP Rev-A.0	Planned	22.00	59.98	18377.47	18377.47	3.27	18377.47	PASS	
SEC.18-T11N-R64W	SLOT#08 SALT RANCH FEE 502-1830H (335'FSL & 1043'FEL, SEC.18)	SALT RANCH FEE 502-1830H	SALT RANCH FEE 502-1830H PWB	SALT RANCH FEE 502-1830H PWP Rev-A.0	Planned	22.00	90.11	18377.47	18377.47	4.96	18377.47	PASS	
SEC.18-T11N-R64W	SLOT#05 SALT RANCH FEE 202-1807H (334'FSL & 998'FEL, SEC.18)	SALT RANCH FEE 202-1807H	SALT RANCH FEE 202-1807H PWB	SALT RANCH FEE 202-1807H PWP Rev-A.0	Planned	22.00	45.05	8022.00	304.83	6.63	8522.00	PASS	
SEC.18-T11N-R64W	SLOT#07 SALT RANCH FEE 502-1807H (335'FSL & 1028'FEL, SEC.18)	SALT RANCH FEE 502-1807H	SALT RANCH FEE 502-1807H PWB	SALT RANCH FEE 502-1807H PWP Rev-A.0	Planned	22.00	74.91	8122.00	392.22	11.22	9222.00	PASS	

OFFSET WELL CLEARANCE SUMMARY (7 Offset Wellpaths selected) Ratios are calculated in Closest Approach plane

[illegible]