



Mr. Phillip Porter
PDC Energy Inc.
4000 Burlington Avenue
Evans, Colorado 80620

September 15, 2020

RE: Vegetation Assessment Report (Final Reclamation Completion Notice)
COGCC Location Information: WELLS RANCH-66N63W /34NENE (Location I.D. 409635)
Operator Location Information: WELLS RANCH 41-34 Well (API # 05-123-20980)
PDC Energy Inc. (Operator: 69175)

Dear Mr. Porter:

Apex Companies, LLC (Apex) is presenting this letter to PDC Energy Inc. (PDC) documenting the results of a vegetation assessment that demonstrates successful completion of final reclamation efforts, per Colorado Oil & Gas Conservation Commission (COGCC) Rule 1004, on the above-referenced location. This conclusion is based on site visits, project correspondence, site documentation, and the completed vegetation assessment. Attached is a topographic location map and a vegetation survey site map with additional location information.

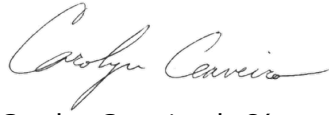
On July 15, 2020, modified step-point vegetation surveys were conducted on the reclaimed portion of the well pad, and on adjacent reference areas. Foliar and basal cover, along with non-vegetated and noxious weed occurrences, were documented; 100 survey points were recorded within the reclaimed disturbance and 100 survey points were recorded within the reference area. Vegetation survey points were identified using a bullseye target tool. The survey methodology employed by Apex is based on the *step-point method* described in an interagency technical reference published by the Bureau of Land Management (BLM, 1996).

Noxious weeds listed by the Colorado Department of Agriculture were excluded from the percent of reference vegetative coverage calculations, per COGCC Rule 1004.d. To ensure reclamation vegetative composition meets the standards of PDC and the COGCC, undesirable cover is also quantified in the attached Summary of Field Data. Undesirable cover includes species identified by the United States Department of Agriculture (USDA) Natural Resource Conservation Service (NRCS) as introduced and not native to the lower 48 states, and not considered beneficial for reclamation purposes.

Survey results indicate the reclaimed area has a foliar vegetative cover that is 92.3% of the reference area. Vegetation survey results are provided in the attached Summary of Field Data and Field Data Tables. Based on the results of the survey, final reclamation, as defined by COGCC rules and regulations, has been achieved. Photographs exhibiting current site conditions are also attached along with the site map illustrating the vegetation survey photo points and transect locations.

Apex appreciates the opportunity to provide environmental consulting services on this project. Should you have any questions or require additional information, please do not hesitate to contact me.

Sincerely,
Apex Companies, LLC



Carolyn Craveiro de Sá
Environmental Scientist
720-537-5478
Carolyn.CraveirodeSa@apexcos.com

Attachments:

1. Vegetation Survey - Summary of Field Data
2. Topographic Location Map
3. Vegetation Survey Site Map
4. Vegetation Assessment Photo Log
5. Vegetation Survey (Field Data Tables)

Reference:

United States (U.S.) Department of Agriculture (USDA), Forest Service (USFS), Natural Resource Conservation Service (NRCS) and U.S. Department of the Interior (USDOL) Bureau of Land Management (BLM). "Sampling Vegetation Attributes, Interagency Technical Reference, 1996 (Revised in 1997, and 1999)". USDOL BLM Technical References #1734-4.

Date Accessed: August 2, 2017

Vegetation Survey - Summary of Field Data

Client	PDC ENERGY INC
Operator Location Information (API)	WELLS RANCH 41-34 Well (05-123-20980)
Assessment Date	7/15/2020
Inspector Name	Carolyn Craveiro De Sa

Based on the survey methodology, the foliar cover (%) in each survey area is calculated by summing the total number of foliar occurrences, excluding noxious weeds, and dividing by the total occurrences in the transects. For this location:

Reclaim Area (Foliar Cover)	Reference Area (Foliar Cover)
$(49 + 8 + 7) / 164 =$ 39.0%	$(62 + 5 + 7) / 175 =$ 42.3%

For the purposes of this assessment, the undesirable foliar cover (%) is calculated by summing the total number of undesirable* foliar occurrences and dividing by the total occurrences in the transects, excluding noxious weeds. For this location:

Reclaim Area (Undesirable Foliar Cover)	Reference Area (Undesirable Foliar Cover)
$7 / (49 + 8 + 7) =$ 10.9%	$3 / (62 + 5 + 7) =$ 4.1%

The percent of reference used to evaluate the reclamation area for compliance with COGCC Rule 1003.e(2) is calculated by dividing the foliar cover (%) in the reclaim area by the foliar cover (%) in the reference area. For this location:

Percent of Reference (Reclaim % / Reference %)
$39.0\% / 42.3\% =$ 92.3%

Reclaim Area Vegetation

Desirable Foliar Cover	34.8%
Desirable Basal Cover	28.7%
Non Vegetated	29.9%
Noxious Weeds Cover	0.0%
Undesirable Cover	6.7%
Quality Assurance Total <i>(must equal 100)</i>	100.0%
Grass (Foliar)	49
Forb (Foliar)	8
Shrubs (Foliar)	7
Noxious Weed (Foliar)	0
Grass (Basal)	40
Forb (Basal)	4
Shrubs (Basal)	7
Noxious Weed (Basal)	0
Bare Ground	15
Litter	34
Rock	0
Total Occurrences	164

Reference Area Vegetation

Desirable Foliar Cover	40.6%
Desirable Basal Cover	34.3%
Non Vegetated	22.3%
Noxious Weeds Cover	0.6%
Undesirable Cover	2.2%
Quality Assurance Total <i>(must equal 100)</i>	100.0%
Grass (Foliar)	62
Forb (Foliar)	5
Shrubs (Foliar)	7
Noxious Weed (Foliar)	1
Grass (Basal)	54
Forb (Basal)	2
Shrubs (Basal)	5
Noxious Weed (Basal)	0
Bare Ground	3
Litter	36
Rock	0
Total Occurrences	175

* Identified as introduced and non-native to the lower 48 states by the USDA NRCS, and not considered beneficial for reclamation purposes.

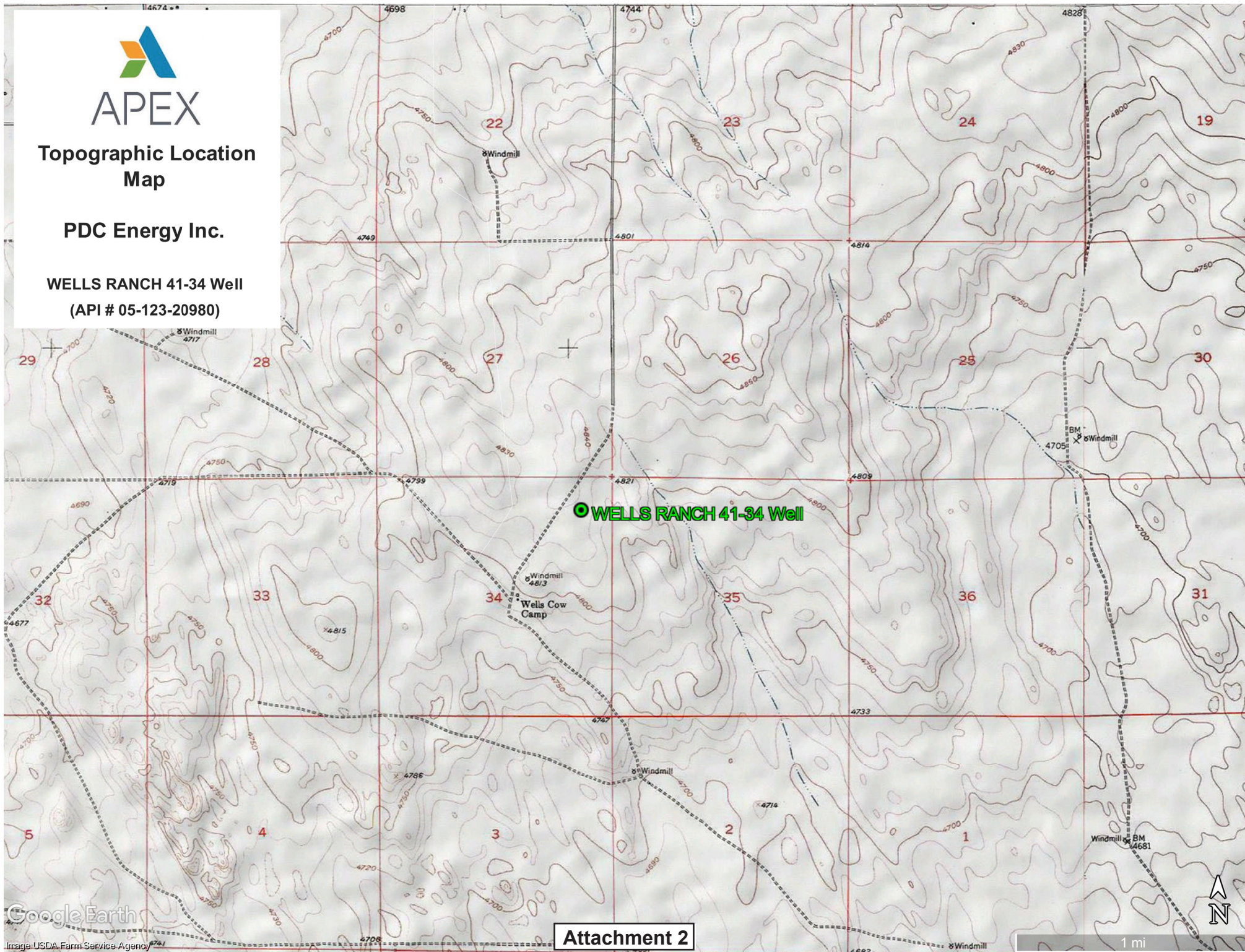


APEX

Topographic Location
Map

PDC Energy Inc.

WELLS RANCH 41-34 Well
(API # 05-123-20980)



Google Earth

Image: USDA Farm Service Agency

Attachment 2



APEX

Vegetation Survey Site Map

PDC Energy INC

WELLS RANCH 41-34 Well

(API # 05-123-20980)

- Vegetation Photo Point
- Cardinal Direction Photos
- Reclaim Transect
- Reference Transect

Legal Description: NENE, Sec. 34, T6N-R63W

Lat/Long: 40.44839/-104.41597

County: Weld

Land Use: Non-Cropland

Reference Area Foliar Cover: 42.3%

Reclaim Area Foliar Cover: 39.0%

Cover Ratio (Reclaim/Reference): 92.3%

Inspector: Carolyn Craviero de Sa

Assessment Date: 07/15/2020

Aerial Imagery Date: 07/09/2013

**Please reference coordinate disclaimer on the photo log pages.*



Vegetation Assessment Photo Log

Date Completed - 07/15/2020

Client **PDC Energy Inc.**

Operator Location Information (API)- **WELLS RANCH 41-34 Well (05-123-20980)**



Photo Point A: Edge of Disturbance - Facing Northeast

*Geographic coordinates provided in the borders of all attached photos are based on points identified by the mobile phone or tablet which collected the photo. Coordinate accuracy in this format is typically no greater than 5 meters, while the points illustrated in the site diagram associated with this submittal were collected with a high accuracy GPS unit with sub-meter accuracy. Discrepancies between the site diagram and photo coordinates will exist.

Vegetation Assessment Photo Log

Date Completed - 07/15/2020

Client - PDC Energy Inc.

Operator Location Information (API)- **WELLS RANCH 41-34 Well (05-123-20980)**



Photo Point B: North of Disturbance - Facing South



Photo Point C: South of Disturbance - Facing North



Photo Point D: West of Disturbance - Facing East



Photo Point E: East of Disturbance - Facing West

Vegetation Assessment Photo Log

Client - PDC Energy Inc.

Date Completed - 07/15/2020

Operator Location Information (API)- **WELLS RANCH 41-34 Well (05-123-20980)**



Photo Point A: Reclaim Area Vegetation - Facing Northwest

Vegetation Assessment Photo Log

Client - PDC Energy Inc.

Date Completed - 07/15/2020

Operator Location Information - **WELLS RANCH 41-34 Well**
(API) - (05-123-20980)



Photo Point E: Reclaim Transect 1 - Facing Southwest



Photo Point D: Reclaim Transect 2 - Facing Northeast

Vegetation Assessment Photo Log

Client - PDC Energy Inc.

Date Completed - 07/15/2020

Operator Location Information (API)- **WELLS RANCH 41-34 Well (05-123-20980)**



Photo Point F: Reference Area Vegetation - Facing Northeast

Vegetation Assessment Photo Log

Client - PDC Energy Inc.

Date Completed - 07/15/2020

Operator Location Information - **WELLS RANCH 41-34 Well**
(API) - (05-123-20980)



Photo Point F: Reference Transect 1 - Facing East



Transect Photo G: Reference Transect 2 - Facing West

Vegetation Survey (Field Data Table)

Client: PDC ENERGY INC
 Operator Location Information (API) : WELLS RANCH 41-34 Well (05-123-20980)
 Transect ID: Reclaim Transect 1
 Transect Length: 349 ft.
 Assessment Date: 7/15/2020
 Inspector: Carolyn Craveiro de Sa

Point	Foliar	Species	Basal	Species
1	Grass	<i>Calamovilfa longifolia</i>	Grass	<i>Calamovilfa longifolia</i>
2	Grass	<i>Calamovilfa longifolia</i>	Non Vegetative	Litter
3	Grass	<i>Calamovilfa longifolia</i>	Grass	<i>Calamovilfa longifolia</i>
4			Non Vegetative	Litter
5	Grass	<i>Calamovilfa longifolia</i>	Grass	<i>Bouteloua gracilis</i>
6	Grass	<i>Calamovilfa longifolia</i>	Grass	<i>Calamovilfa longifolia</i>
7	Shrub	<i>Artemisia cana</i>	Shrub	<i>Artemisia cana</i>
8	Grass	<i>Calamovilfa longifolia</i>	Non Vegetative	Bare Ground
9			Non Vegetative	Litter
10	Grass	<i>Calamovilfa longifolia</i>	Non Vegetative	Litter
11	Grass	<i>Calamovilfa longifolia</i>	Grass	<i>Calamovilfa longifolia</i>
12			Non Vegetative	Litter
13			Non Vegetative	Bare Ground
14	Shrub	<i>Artemisia cana</i>	Shrub	<i>Artemisia cana</i>
15	Shrub	<i>Artemisia cana</i>	Shrub	<i>Artemisia cana</i>
16	Grass	<i>Calamovilfa longifolia</i>	Grass	<i>Calamovilfa longifolia</i>
17			Non Vegetative	Bare Ground
18	Grass	<i>Calamovilfa longifolia</i>	Grass	<i>Calamovilfa longifolia</i>
19			Non Vegetative	Litter
20			Non Vegetative	Litter
21	Grass	<i>Calamovilfa longifolia</i>	Grass	<i>Calamovilfa longifolia</i>
22			Non Vegetative	Litter
23			Non Vegetative	Litter
24	Shrub	<i>Artemisia cana</i>	Shrub	<i>Artemisia cana</i>
25	Grass	<i>Calamovilfa longifolia</i>	Non Vegetative	Bare Ground
26			Non Vegetative	Bare Ground
27	Forb	<i>Salsola L</i>	Forb	<i>Salsola L</i>
28	Forb	<i>Salsola L</i>	Grass	<i>Elymus lanceolatus</i>
29			Non Vegetative	Bare Ground
30	Grass	<i>Sporobolus cryptandrus</i>	Non Vegetative	Bare Ground
31	Shrub	<i>Artemisia cana</i>	Shrub	<i>Artemisia cana</i>
32	Forb	<i>Kochia scoparia</i>	Forb	<i>Kochia scoparia</i>
33	Grass	<i>Hesperostipa comata</i>	Non Vegetative	Litter
34	Grass	<i>Calamovilfa longifolia</i>	Grass	<i>Calamovilfa longifolia</i>
35			Non Vegetative	Bare Ground
36	Grass	<i>Distichlis spicata</i>	Non Vegetative	Litter
37	Shrub	<i>Artemisia cana</i>	Shrub	<i>Artemisia cana</i>
38			Non Vegetative	Bare Ground
39	Grass	<i>Elymus elymoides</i>	Grass	<i>Elymus elymoides</i>
40			Non Vegetative	Bare Ground
41			Non Vegetative	Bare Ground
42	Forb	<i>Salsola L</i>	Non Vegetative	Bare Ground
43	Forb	<i>Salsola L</i>	Grass	<i>Elymus lanceolatus</i>
44			Non Vegetative	Litter
45			Non Vegetative	Bare Ground
46	Grass	<i>Calamovilfa longifolia</i>	Grass	<i>Calamovilfa longifolia</i>
47	Grass	<i>Calamovilfa longifolia</i>	Non Vegetative	Litter
48	Grass	<i>Calamovilfa longifolia</i>	Non Vegetative	Litter
49	Grass	<i>Distichlis spicata</i>	Grass	<i>Distichlis spicata</i>
50			Non Vegetative	Litter

Vegetation Survey (Field Data Table)

Client: PDC ENERGY INC
 Operator Location Information (API) : WELLS RANCH 41-34 Well (05-123-20980)
 Transect ID: Reclaim Transect 2
 Transect Length: 329 ft.
 Assessment Date: 7/15/2020
 Inspector: Carolyn Craveiro de Sa

Point	Foliar	Species	Basal	Species
1			Non Vegetative	Litter
2	Grass	<i>Calamovilfa longifolia</i>	Grass	<i>Bouteloua gracilis</i>
3	Grass	<i>Bouteloua gracilis</i>	Grass	<i>Bouteloua gracilis</i>
4			Non Vegetative	Litter
5	Grass	<i>Bouteloua gracilis</i>	Grass	<i>Bouteloua gracilis</i>
6	Grass	<i>Hesperostipa comata</i>	Grass	<i>Hesperostipa comata</i>
7	Grass	<i>Hesperostipa comata</i>	Grass	<i>Hesperostipa comata</i>
8	Grass	<i>Bouteloua gracilis</i>	Grass	<i>Bouteloua gracilis</i>
9	Grass	<i>Hesperostipa comata</i>	Grass	<i>Hesperostipa comata</i>
10	Grass	<i>Calamovilfa longifolia</i>	Grass	<i>Calamovilfa longifolia</i>
11			Non Vegetative	Litter
12	Grass	<i>Calamovilfa longifolia</i>	Grass	<i>Calamovilfa longifolia</i>
13	Grass	<i>Calamovilfa longifolia</i>	Grass	<i>Calamovilfa longifolia</i>
14	Grass	<i>Calamovilfa longifolia</i>	Grass	<i>Calamovilfa longifolia</i>
15	Grass	<i>Hesperostipa comata</i>	Grass	<i>Hesperostipa comata</i>
16	Grass	<i>Calamovilfa longifolia</i>	Grass	<i>Calamovilfa longifolia</i>
17			Non Vegetative	Litter
18	Grass	<i>Sporobolus cryptandrus</i>	Non Vegetative	Litter
19			Non Vegetative	Litter
20	Grass	<i>Calamovilfa longifolia</i>	Non Vegetative	Litter
21	Grass	<i>Calamovilfa longifolia</i>	Grass	<i>Calamovilfa longifolia</i>
22	Grass	<i>Bouteloua gracilis</i>	Grass	<i>Bouteloua gracilis</i>
23			Non Vegetative	Litter
24	Grass	<i>Hesperostipa comata</i>	Grass	<i>Hesperostipa comata</i>
25			Non Vegetative	Litter
26			Non Vegetative	Litter
27	Forb	<i>Kochia scoparia</i>	Forb	<i>Kochia scoparia</i>
28	Forb	<i>Kochia scoparia</i>	Forb	<i>Kochia scoparia</i>
29			Non Vegetative	Bare Ground
30			Non Vegetative	Litter
31	Grass	<i>Calamovilfa longifolia</i>	Grass	<i>Calamovilfa longifolia</i>
32	Grass	<i>Calamovilfa longifolia</i>	Grass	<i>Calamovilfa longifolia</i>
33			Non Vegetative	Bare Ground
34	Shrub	<i>Artemisia cana</i>	Shrub	<i>Artemisia cana</i>
35	Grass	<i>Hesperostipa comata</i>	Grass	<i>Hesperostipa comata</i>
36			Non Vegetative	Litter
37			Non Vegetative	Litter
38			Non Vegetative	Litter
39	Grass	<i>Calamovilfa longifolia</i>	Grass	<i>Calamovilfa longifolia</i>
40	Grass	<i>Calamovilfa longifolia</i>	Grass	<i>Calamovilfa longifolia</i>
41			Non Vegetative	Litter
42	Grass	<i>Sporobolus cryptandrus</i>	Grass	<i>Sporobolus cryptandrus</i>
43	Grass	<i>Distichlis spicata</i>	Grass	<i>Distichlis spicata</i>
44	Grass	<i>Hesperostipa comata</i>	Non Vegetative	Litter
45	Grass	<i>Hesperostipa comata</i>	Grass	<i>Hesperostipa comata</i>
46			Non Vegetative	Litter
47			Non Vegetative	Litter
48	Forb	<i>Ambrosia psilostachya</i>	Grass	<i>Bouteloua gracilis</i>
49	Grass	<i>Calamovilfa longifolia</i>	Grass	<i>Calamovilfa longifolia</i>
50			Non Vegetative	Litter

Vegetation Survey (Field Data Table)

Client: PDC ENERGY INC
 Operator Location Information (API) : WELLS RANCH 41-34 Well (05-123-20980)
 Transect ID: Reference Transect 1
 Transect Length: 382 ft.
 Assessment Date: 7/15/2020
 Inspector: Carolyn Craveiro de Sa

Point	Foliar	Species	Basal	Species
1			Non Vegetative	Litter
2	Grass	<i>Distichlis spicata</i>	Grass	<i>Distichlis spicata</i>
3			Non Vegetative	Litter
4			Non Vegetative	Bare Ground
5	Grass	<i>Bouteloua gracilis</i>	Grass	<i>Bouteloua gracilis</i>
6			Non Vegetative	Litter
7	Grass	<i>Calamovilfa longifolia</i>	Grass	<i>Calamovilfa longifolia</i>
8	Grass	<i>Hesperostipa comata</i>	Grass	<i>Hesperostipa comata</i>
9	Grass	<i>Hesperostipa comata</i>	Grass	<i>Hesperostipa comata</i>
10	Grass	<i>Hesperostipa comata</i>	Grass	<i>Hesperostipa comata</i>
11	Grass	<i>Bouteloua gracilis</i>	Grass	<i>Bouteloua gracilis</i>
12			Non Vegetative	Bare Ground
13	Grass	<i>Calamovilfa longifolia</i>	Grass	<i>Calamovilfa longifolia</i>
14	Grass	<i>Distichlis spicata</i>	Grass	<i>Distichlis spicata</i>
15			Non Vegetative	Bare Ground
16	Forb	<i>Argemone polyanthemus</i>	Forb	<i>Argemone polyanthemus</i>
17	Grass	<i>Bouteloua gracilis</i>	Grass	<i>Bouteloua gracilis</i>
18	Grass	<i>Calamovilfa longifolia</i>	Grass	<i>Calamovilfa longifolia</i>
19	Grass	<i>Hesperostipa comata</i>	Grass	<i>Hesperostipa comata</i>
20	Grass	<i>Calamovilfa longifolia</i>	Grass	<i>Calamovilfa longifolia</i>
21	Grass	<i>Calamovilfa longifolia</i>	Grass	<i>Calamovilfa longifolia</i>
22	Shrub	<i>Artemisia cana</i>	Shrub	<i>Artemisia cana</i>
23			Non Vegetative	Litter
24	Grass	<i>Bouteloua gracilis</i>	Non Vegetative	Litter
25	Grass	<i>Calamovilfa longifolia</i>	Grass	<i>Calamovilfa longifolia</i>
26	Grass	<i>Bouteloua gracilis</i>	Non Vegetative	Litter
27	Grass	<i>Bouteloua gracilis</i>	Grass	<i>Bouteloua gracilis</i>
28	Grass	<i>Bouteloua gracilis</i>	Grass	<i>Bouteloua gracilis</i>
29	Grass	<i>Calamovilfa longifolia</i>	Grass	<i>Calamovilfa longifolia</i>
30	Shrub	<i>Artemisia cana</i>	Grass	<i>Bouteloua gracilis</i>
31	Grass	<i>Hesperostipa comata</i>	Grass	<i>Hesperostipa comata</i>
32	Grass	<i>Calamovilfa longifolia</i>	Grass	<i>Calamovilfa longifolia</i>
33			Non Vegetative	Litter
34	Grass	<i>Agropyron cristatum</i>	Grass	<i>Agropyron cristatum</i>
35	Grass	<i>Hesperostipa comata</i>	Grass	<i>Hesperostipa comata</i>
36	Shrub	<i>Artemisia cana</i>	Shrub	<i>Artemisia cana</i>
37	Grass	<i>Calamovilfa longifolia</i>	Grass	<i>Calamovilfa longifolia</i>
38			Non Vegetative	Litter
39	Shrub	<i>Artemisia cana</i>	Shrub	<i>Artemisia cana</i>
40	Grass	<i>Hesperostipa comata</i>	Grass	<i>Hesperostipa comata</i>
41	Shrub	<i>Artemisia cana</i>	Shrub	<i>Artemisia cana</i>
42	Grass	<i>Calamovilfa longifolia</i>	Grass	<i>Calamovilfa longifolia</i>
43	Grass	<i>Calamovilfa longifolia</i>	Non Vegetative	Litter
44	Grass	<i>Hesperostipa comata</i>	Grass	<i>Hesperostipa comata</i>
45	Grass	<i>Elymus elymoides</i>	Grass	<i>Elymus elymoides</i>
46	Shrub	<i>Artemisia cana</i>	Grass	<i>Hesperostipa comata</i>
47	Grass	<i>Hesperostipa comata</i>	Grass	<i>Hesperostipa comata</i>
48			Non Vegetative	Litter
49			Non Vegetative	Litter
50	Grass	<i>Calamovilfa longifolia</i>	Grass	<i>Calamovilfa longifolia</i>

Vegetation Survey (Field Data Table)

Client: PDC ENERGY INC
 Operator Location Information (API) : WELLS RANCH 41-34 Well (05-123-20980)
 Transect ID: Reference Transect 2
 Transect Length: 300 ft.
 Assessment Date: 7/15/2020
 Inspector: Carolyn Craveiro de Sa

Point	Foliar	Species	Basal	Species
1			Non Vegetative	Litter
2	Grass	<i>Calamovilfa longifolia</i>	Grass	<i>Calamovilfa longifolia</i>
3	Forb	<i>Kochia scoparia</i>	Non Vegetative	Litter
4	Forb	<i>Kochia scoparia</i>	Non Vegetative	Litter
5	Grass	<i>Calamovilfa longifolia</i>	Grass	<i>Calamovilfa longifolia</i>
6	Grass	<i>Calamovilfa longifolia</i>	Grass	<i>Calamovilfa longifolia</i>
7	Grass	<i>Calamovilfa longifolia</i>	Grass	<i>Calamovilfa longifolia</i>
8			Non Vegetative	Litter
9	Grass	<i>Calamovilfa longifolia</i>	Non Vegetative	Litter
10	Grass	<i>Calamovilfa longifolia</i>	Grass	<i>Calamovilfa longifolia</i>
11	Grass	<i>Hesperostipa comata</i>	Grass	<i>Hesperostipa comata</i>
12	Grass	<i>Bouteloua gracilis</i>	Non Vegetative	Litter
13	Shrub	<i>Artemisia cana</i>	Shrub	<i>Artemisia cana</i>
14			Non Vegetative	Litter
15	Forb	<i>Ambrosia psilostachya</i>	Non Vegetative	Litter
16	Grass	<i>Hesperostipa comata</i>	Grass	<i>Hesperostipa comata</i>
17	Grass	<i>Bouteloua gracilis</i>	Grass	<i>Bouteloua gracilis</i>
18	Grass	<i>Calamovilfa longifolia</i>	Grass	<i>Hesperostipa comata</i>
19	Grass	<i>Calamovilfa longifolia</i>	Grass	<i>Calamovilfa longifolia</i>
20			Non Vegetative	Litter
21	Grass	<i>Calamovilfa longifolia</i>	Non Vegetative	Litter
22	Grass	<i>Calamovilfa longifolia</i>	Grass	<i>Calamovilfa longifolia</i>
23	Grass	<i>Calamovilfa longifolia</i>	Grass	<i>Calamovilfa longifolia</i>
24	Grass	<i>Calamovilfa longifolia</i>	Grass	<i>Calamovilfa longifolia</i>
25	Forb	<i>Salsola L</i>	Forb	<i>Salsola L</i>
26	Grass	<i>Calamovilfa longifolia</i>	Grass	<i>Calamovilfa longifolia</i>
27			Non Vegetative	Litter
28	Grass	<i>Hesperostipa comata</i>	Non Vegetative	Litter
29	Grass	<i>Bouteloua gracilis</i>	Non Vegetative	Litter
30	Grass	<i>Calamovilfa longifolia</i>	Grass	<i>Calamovilfa longifolia</i>
31	Grass	<i>Hesperostipa comata</i>	Grass	<i>Hesperostipa comata</i>
32			Non Vegetative	Litter
33			Non Vegetative	Litter
34	Grass	<i>Bouteloua gracilis</i>	Grass	<i>Bouteloua gracilis</i>
35	Grass	<i>Hesperostipa comata</i>	Grass	<i>Hesperostipa comata</i>
36			Non Vegetative	Litter
37			Non Vegetative	Litter
38			Non Vegetative	Litter
39			Non Vegetative	Litter
40			Non Vegetative	Litter
41	Noxious Weed C	<i>Bromus tectorum</i>	Non Vegetative	Litter
42	Grass	<i>Calamovilfa longifolia</i>	Non Vegetative	Litter
43	Grass	<i>Distichlis spicata</i>	Grass	<i>Distichlis spicata</i>
44	Grass	<i>Hesperostipa comata</i>	Non Vegetative	Litter
45	Grass	<i>Calamovilfa longifolia</i>	Grass	<i>Calamovilfa longifolia</i>
46	Grass	<i>Calamovilfa longifolia</i>	Grass	<i>Calamovilfa longifolia</i>
47			Non Vegetative	Litter
48			Non Vegetative	Litter
49	Grass	<i>Calamovilfa longifolia</i>	Grass	<i>Calamovilfa longifolia</i>
50	Grass	<i>Calamovilfa longifolia</i>	Grass	<i>Calamovilfa longifolia</i>