

Inspection Photos

Operator: Catamount Energy
API: 067-09922
Date: 9/29/2020



Photo 1. View of the project area from the southeastern corner facing center.



Photo 2. View of the southern project area from the southeastern corner facing eastward. Revegetation is progressing in a grazed vegetative condition. Grasses are not identifiable at this time.



Photo 3. View from the eastern project area from the southeastern corner facing northward.

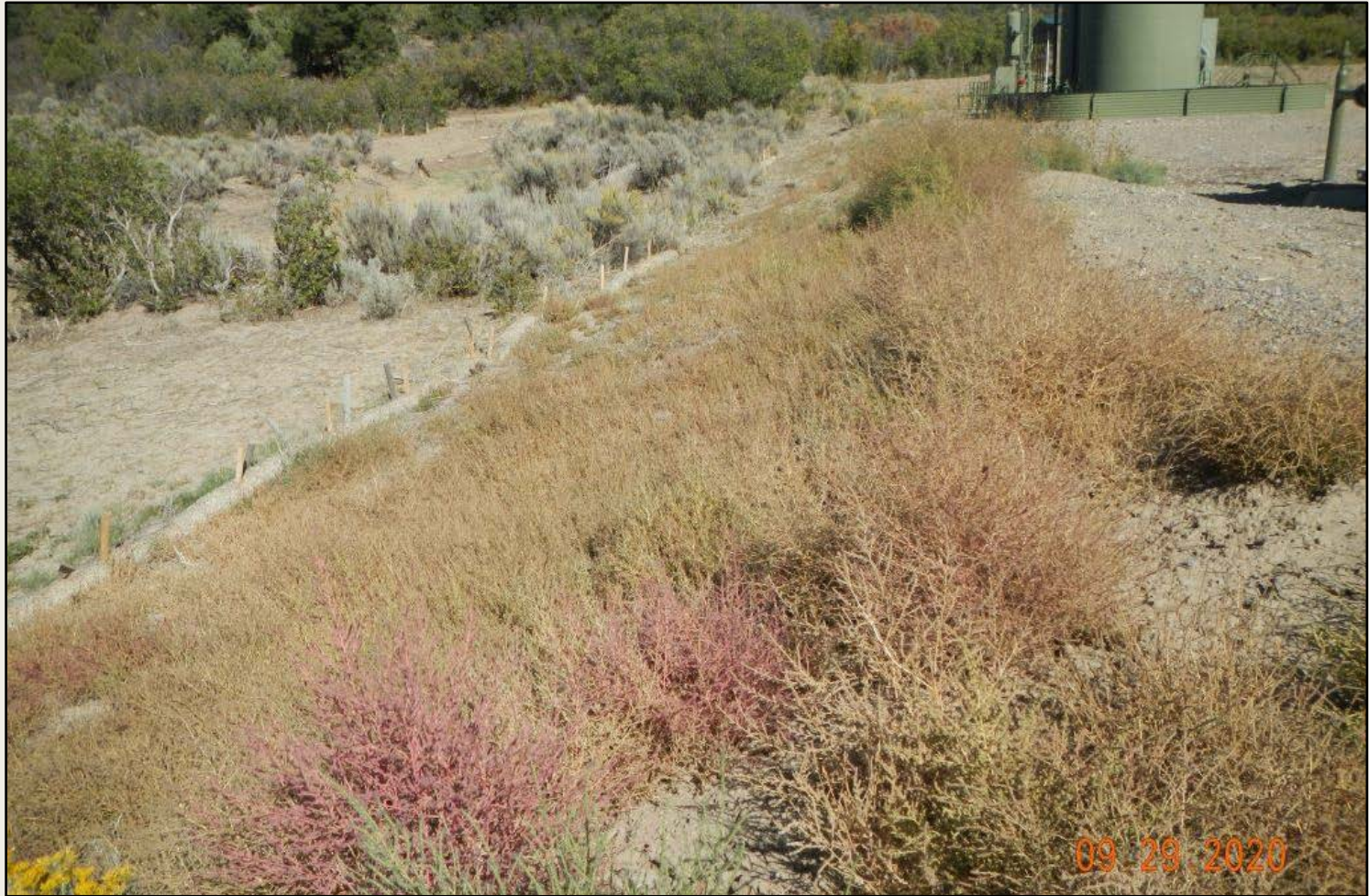


Photo 4. View of dense Russian thistle debris within the northern project area. Needs to be removed. Revegetation may need to be conducted here if desirable vegetation is not present beneath the weed debris.



Photo 5. View of reference area vegetation comprised of sagebrush shrubland with grasses such as western wheatgrass and forbs such as



Photos 6/7. Closed gate coming in (left) and leaving (right).