

# Reclamation Inspection

September 18, 2020 (field inspection)

October 1, 2020 (desktop inspection to update access road  
reclamation requirements)

Operator: KERR MCGEE OIL & GAS ONSHORE LP #47120

Complaint #: 200449186

Weld County, CO

Section 26 T3N R68W

Chris Binschus  
Reclamation Specialist, COGCC

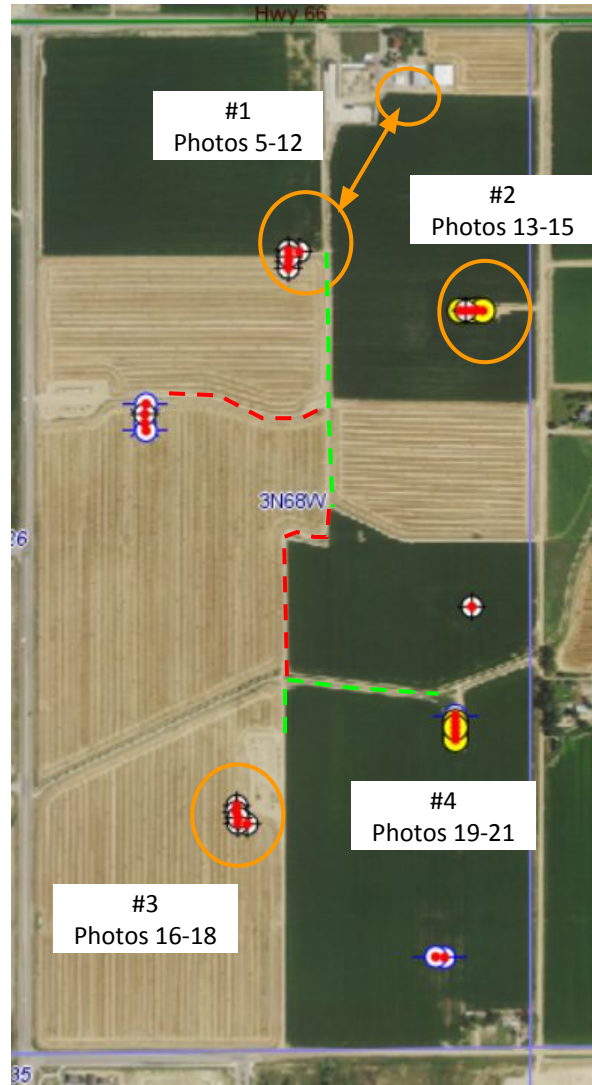


**COLORADO**

**Oil & Gas Conservation  
Commission**

Department of Natural Resources

## Inspection Photos Complaint Overview Map



**Photo 1.** COGCC GISOnline aerial imagery taken 2019. Imagery illustrates three locations (#1-#3 orange circles) in addition to access roads with reclamation compliance issues. Access roads which were not pre-existing and need to be reclaimed per Rule 1004 are the red-dashed lines; access roads that were pre-existing only requires gravel to be removed are the green-dashed lines.



Inspection Photos  
Access Road Map



**Photo 2.** Aerial imagery taken September 20, 1967 illustrating an overview of the area (area within the green-dashed line) demonstrating its condition prior to oil and gas activity. The red polygon areas highlight areas of pre-existing roads prior to oil and gas. Refer to Photos 3 and 4 which are zoomed in areas of the above area.

Inspection Photos  
Access Road Map



**Photo 3.** Zoomed in aerial imagery of the northern area taken September 20, 1967 illustrating an overview of the area demonstrating its condition prior to oil and gas activity. The red polygon areas highlight areas of pre-existing roads prior to oil and gas.





Inspection Photos  
Access Road Map



**Photo 4.** Zoomed in aerial imagery of the southern area taken September 20, 1967 illustrating an overview of the area demonstrating its condition prior to oil and gas activity. The red polygon areas highlight areas of pre-existing roads prior to oil and gas.



**Inspection Photos**  
**Location #1**  
**Location ID: 336346**



**COLORADO**  
Oil & Gas Conservation  
Commission  
Department of Natural Resources

Inspection Number: 697502026

Inspection Photos  
Location #1  
Location ID: 336346



**Photo 5.** Photo taken from the southern plugged and abandoned (P&A) location, facing South. Photo illustrates the lack of crop growth (sugar beets). Sugar beets that are growing within the PA location are not reflective of reference area crop growth.



**Photo 6.** Photo taken from the southern plugged and abandoned location, facing East. See comments under Photo 5.



Inspection Photos  
Location #1  
Location ID: 336346



**Photo 7.** Photo taken from the southern plugged and abandoned location, facing East. Photo illustrates a stunted sugar beet not reflective of reference areas.



**Photo 8.** Photo taken from the adjacent reference area, facing South. Photo illustrates the crop deficiencies between the P&A crops versus the reference crops.





Inspection Photos  
Location #1  
Location ID: 336346



**Photo 9.** Photo taken of a sugar beet from the P&A area (red circle) and from the reference area (blue circle).



Inspection Photos  
Location #1  
Location ID: 336346



**Photo 10.** Photo taken from the eastern P&A location, facing South. Photo illustrates portions of the crop field have not been reclaimed (red polygon).





Inspection Photos  
Location #1  
Location ID: 336346



**Photo 11.** Photo taken from the P&A location. Photo illustrates a damaged irrigation ditch from plugging operations.

Inspection Photos  
Location #1  
Location ID: 336346



**Photo 12.** Photo taken from the nearby residence (refer to Photo 1). Photo illustrates an out of service riser related to a domestic tap which has not been abandoned per Rule 1105.



**Inspection Photos**  
**Location #2**  
**Location ID: 437349**



**COLORADO**  
Oil & Gas Conservation  
Commission  
Department of Natural Resources

Inspection Number: 697502027



Inspection Photos  
Location #2  
Location ID: 437349



**Photo 13.** COGCC drone aerial imagery from 9/18/2020. Imagery illustrates interim reclamation areas are not reflective of reference area crop growth.



Inspection Photos  
Location #2  
Location ID: 437349



**Photo 14.** Photo taken from the western interim reclamation area, facing West. Photo illustrates crop growth within the interim area is not reflective of reference area crop growth.



**Photo 15.** Photo taken from the northern interim reclamation area, facing North. See comments under Photo 14.



**Inspection Photos**  
**Location #3**  
**Location ID: 336167**



**COLORADO**  
Oil & Gas Conservation  
Commission  
Department of Natural Resources

Inspection Number: 697502028



Inspection Photos  
Location #3  
Location ID: 336167



**Photo 16.** COGCC drone aerial imagery from 9/18/2020. Imagery illustrates the plugged and abandoned (P&A) location is not reflective of reference area crop growth. This P&A location includes wells and the original tank battery along the southeastern polygon.



Inspection Photos  
Location #3  
Location ID: 336167



**Photo 17.** Photo taken from the southeastern P&A area, facing West. Photo illustrates the lack of crop growth within the P&A area.



**Photo 18.** Photo taken from the eastern P&A area, facing West. See comments under Photo 17.

**Inspection Photos**  
**Location #4**  
**Location ID: 437535**



**COLORADO**  
Oil & Gas Conservation  
Commission  
Department of Natural Resources

Inspection Number: 697502029



Inspection Photos  
Location #4  
Location ID: 437535



**Photo 19.** COGCC drone aerial imagery from 9/18/2020. Imagery illustrates an approximate crop area (red polygon) where the surface owner stated crop deficiencies due to subsequent oil and gas operations. Crop has already been harvested so COGCC staff could not document crop growth. Per a surface owner statement, Operator typically uses the northern access road (green dashed line) but the access was too narrow to perform subsequent operations and utilized a southern access route (yellow dashed line).





Inspection Photos  
Location #4  
Location ID: 437535



**Photo 20.** Photo taken from the southern route (orange dashed line), facing West.



**Photo 21.** Photo taken from the southern route (orange dashed line). Photo illustrates some gravel present which might indicate it was utilized to perform subsequent oil and gas operations.

