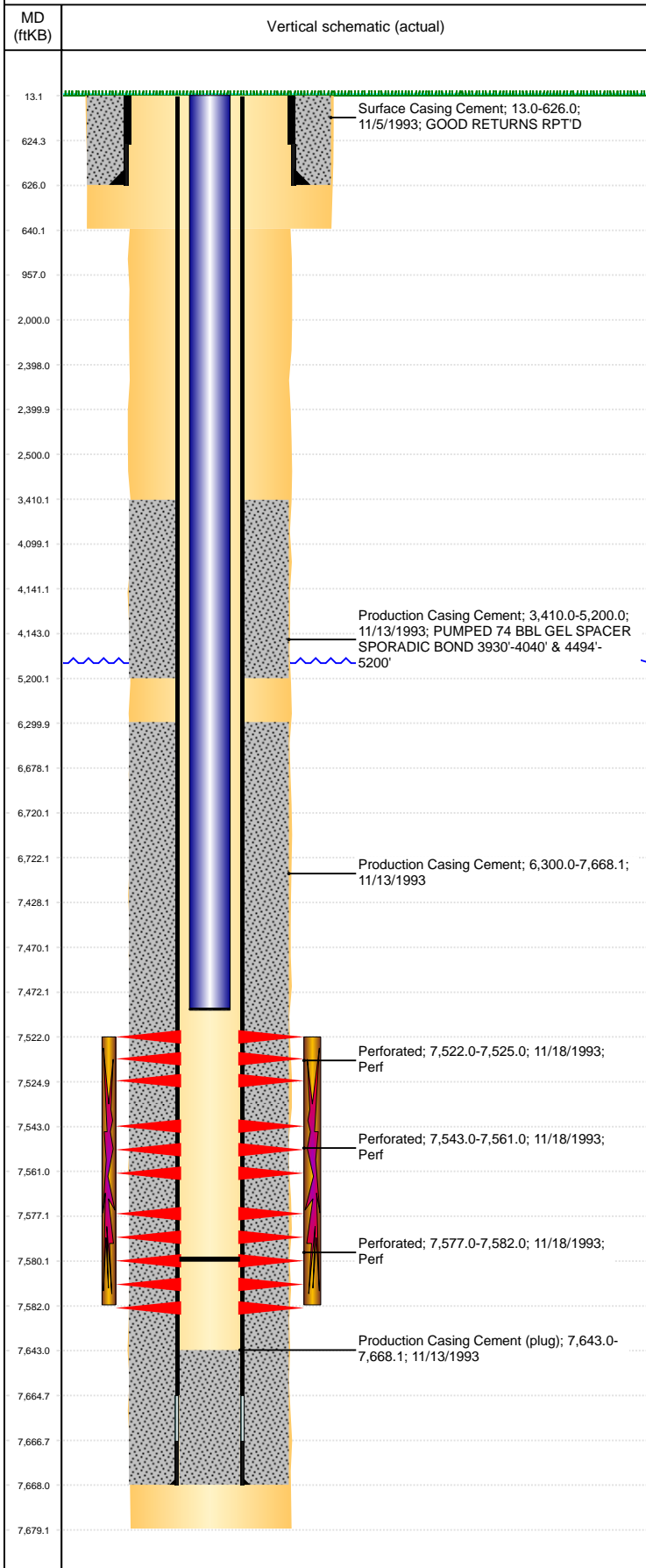


Well Name: NORRIS D32-04J

VERTICAL, ORIGINAL HOLE, 9/25/2020 2:09:38 PM



Well Header									
API 05-123-17404		Business Unit DJ BASIN			District 15		Well Config VERTICAL		
KB - GL / MSL (ft... 13.00		Spud Date 11/5/1993		P & A Date		Well Production Status SI			SoRT No
Comment SURF CSG ALSO RPT'D AS 8 5/8" 24# ON LOGS									
DISCREPANCY WITH TD: DRL RPT:7677', ST RPT& LOG:7679' (USED DEPTH LOGGER ON LOG 7679')									
WELLHEAD IS 3000#									
Surface Location (Congressional)									
Qtr 3 SE	Qtr 4 SE	Section 32	Twtnshp 3	Twtnsh... N	Range 64	Rng E/... W	Actual Latitude (°) 40.17748412	Actual Longitude (°) -104.56960326	
Wellbore Sections									
Section Des			Size (in)			Act Top, MD (ftKB)		Act Btm, MD (ftKB)	
SURFACE			12 1/4			13		640	
PRODUCTION			7 7/8			640		7,679	
Casing Strings									
Csg Des		Run Date		OD (in)	Wt/Len (lb/ft)	Grade	Top, MD (ftKB)	MD (ftKB)	
Surface		11/5/1993		8 5/8	36.00		13.0	626.0	
Production		11/13/1993		3 1/2	7.70	M-75	13.0	7,668.1	
Cement									
Des				Start Date		Top (ftKB)		Btm (ftKB)	
Surface Casing Cement				11/5/1993		13.0		626.0	
Production Casing Cement				11/13/1993		3,410.0		5,200.0	
Production Casing Cement				11/13/1993		6,300.0		7,668.1	
Zone Statuses									
Zone Name		Status Date	Status	Fluid Type	Job			Prod Method	
J SAND		1/3/1994	PR		DRILLING/COMPLETION - ORIGINAL, 11/5/1993...				
J SAND		1/3/1994	PR	Oil				Flowing	
Perforation Data									
Linked Zone		Bnch/Stg	Entered Shot Total		Top (ftKB)		Btm (ftKB)		Date
J SAND, ORIGINAL HOLE			7		7,522.00		7,525.00		11/18/1993
J SAND, ORIGINAL HOLE			37		7,543.00		7,561.00		11/18/1993
J SAND, ORIGINAL HOLE			11		7,577.00		7,582.00		11/18/1993
Stimulation Intervals									
Zone			Start Date			Top (ftKB)		Btm (ftKB)	
J SAND, ORIGINAL HOLE			12/1/1993			7,522.0		7,582.0	
Other In Hole									
Run Date	Des				Make	OD (in)	Top (ftKB)	Btm (ftKB)	
Logs									
Date		Type				Top, MD (ftKB)		Btm, MD (ftKB)	
11/12/1993		COMPENSATED DENSITY				3,800.0		7,644.0	
11/12/1993		INDUCTION				626.0		7,673.0	
11/18/1993		CEMENT BOND				3,300.0		7,636.0	
5/8/2017		GYRO				0.0		7,400.0	
Plug Back Total Depths									
Date		Type		Com				Depth (ftKB)	
12/7/1993		FILL		TAGGED FILL				7,550.0	
5/26/2004		FILL		CLEAN OUT TO HARD BOTTOM				7,580.0	