

The Road to Excellence Starts with Safety

Sold To #: 345242		Ship To #: 3919168		Quote #:		Sales Order #: 0906599648				
Customer: NOBLE ENERGY INC-EBUS				Customer Rep: Jim Turner						
Well Name: GUTTERSEN			Well #: YY06-756			API/UWI #: 05-123-48641-00				
Field: WATTENBERG		City (SAP): ROGGEN		County/Parish: WELD		State: COLORADO				
Legal Description: SESW-30-3N-63W-600FSL-2615FWL										
Contractor: H & P DRLG				Rig/Platform Name/Num: H & P 517						
Job BOM: 7523 7523										
Well Type: HORIZONTAL OIL										
Sales Person: HALAMERICA\HX41066				Srv Supervisor: Thomas Haas						
Job										
Formation Name										
Formation Depth (MD)		Top		Bottom						
Form Type				BHST		220 degF				
Job depth MD		17269ft		Job Depth TVD		6716'				
Water Depth				Wk Ht Above Floor		4'				
Perforation Depth (MD)		From		To						
Well Data										
Description	New / Used	Size in	ID in	Weight lbm/ft	Thread	Grade	Top MD ft	Bottom MD ft	Top TVD ft	Bottom TVD ft
Casing	0	9.625	8.921	36			0	1933	0	1933
Casing	0	5.5	4.892	17			0	17269	0	6716
Open Hole Section			8.5				1933	17290	1933	6716
Tools and Accessories										
Type	Size in	Qty	Make	Depth ft		Type	Size in	Qty	Make	
Float Shoe	5.5	1	HES	17269		Top Plug	5.5	1	HES	
Float Collar	5.5	1	HES	17221		Bottom Plug	5.5	2	HES	
RSI Tool	5.5	1	HES	17127						
Fluid Data										
Stage/Plug #: 1										
Fluid #	Stage Type	Fluid Name	Qty	Qty UoM	Mixing Density lbm/gal	Yield ft3/sack	Mix Fluid Gal	Rate bbl/min	Total Mix Fluid Gal	
1	Tuned Prime Spacer	SBM FDP-C1337-18 CEMENT SPACER SYS	120	bbl	11.5	3.87	24.46	8	4259	
1 lbm/bbl		FE-2, 2000 LB BAG - (1005549)								
3.50 lbm/bbl		SEM-94P, 35 LB SACK - (1023987)								
3.50 lbm/bbl		SEM-93P, 35 LB SACK - (1023977)								
145.0780 lbm/bbl		BARITE, BULK (100003681)								
0.10 gal/bbl		D-AIR 3000L, 5 GAL PAIL (101007444)								

Fluid #	Stage Type	Fluid Name	Qty	Qty UoM	Mixing Density lbm/gal	Yield ft3/sack	Mix Fluid Gal	Rate bbl/min	Total Mix Fluid Gal
2	ElastiCem	ELASTICEM (TM) SYSTEM	140	sack	13.2	1.65	8.4	8	1176
0.38 %		SCR-100, 1200 LB BAG - (1126328)							
8.40 Gal		FRESH WATER							
Fluid #	Stage Type	Fluid Name	Qty	Qty UoM	Mixing Density lbm/gal	Yield ft3/sack	Mix Fluid Gal	Rate bbl/min	Total Mix Fluid Gal
3	ElastiCem w/ SCBL	ELASTICEM (TM) SYSTEM	471	sack	13.2	1.67	8.04	8	3787
8.04 Gal		FRESH WATER							
0.30 %		SCR-100, 1200 LB BAG - (1126328)							
Fluid #	Stage Type	Fluid Name	Qty	Qty UoM	Mixing Density lbm/gal	Yield ft3/sack	Mix Fluid Gal	Rate bbl/min	Total Mix Fluid Gal
4	NeoCem NT1	NeoCem TM	1164	sack	13.2	2.04	9.79	8	11396
0.08 %		SCR-100, 1200 LB BAG - (1126328)							
0.08 %		FE-2, 2000 LB BAG - (1005549)							
9.79 Gal		FRESH WATER							
Fluid #	Stage Type	Fluid Name	Qty	Qty UoM	Mixing Density lbm/gal	Yield ft3/sack	Mix Fluid Gal	Rate bbl/min	Total Mix Fluid Gal
5	Displacement	Displacement	400	bbl	8.33				
Cement Left In Pipe		Amount	48 ft		Reason			Shoe Joint	
Mix Water:		pH 7	Mix Water Chloride:		<300 ppm		Mix Water Temperature:		74 °F
Cement Temperature:			Plug Displaced by:		8.4lb/gal Packer Fluid		Disp. Temperature:		69 °F
Plug Bumped?		Yes	Bump Pressure:		2,100 psi		Floats Held?		Yes
Cement Returns:			Returns Density:				Returns Temperature:		
Comment . Mud/Spacer interface returned to surface.									

2.0 Real-Time Job Summary

2.1 Job Event Log

Type	Seq. No.	Activity	Graph Label	Date	Time	Source	DS Pump Press (psi)	DH Density (ppg)	Comb Pump Rate (bbl/min)	Pump Stg Tot (bbl)	Comments
Event	1	Call Out	Call Out	7/16/2020	13:00:00	USER					CREW CALLED OUT AT 13:00 7/16/2020, REQUESTED ON LOCATION 20:30 7/16/2020. CREW PICKED UP CEMENT, CHEMICALS (40 GAL D-AIR, 10 GAL MMCR), 100 LBS SUGAR, FROM FORT LUPTON, CO. BULK 660: 12644847/11764054, BULK 660: 11593521/11633846, PUMP ELITE: 12644845/11645460.
Event	2	Pre-Convoy Safety Meeting	Pre-Convoy Safety Meeting	7/16/2020	17:00:00	USER					DISCUSSED ROUTES, HAZARDS, AND COMMUNICATION WITH CREW
Event	3	Crew Leave Yard	Crew Leave Yard	7/16/2020	17:30:00	USER					STARTED JOURNEY MANAGEMENT.
Event	4	Arrive At Loc	Arrive At Loc	7/16/2020	18:30:00	USER					END JOURNEY MANAGEMENT. MEET WITH CO. MAN TO DISCUSS JOB; SURFACE CASING: 9.625" 36# @ 1933', CASING: 5.5" 17# @ 17269', 48' SHOE JOINT, 8.5" OPEN HOLE, TVD @ 6716', 9.6 PPG WELL FLUID, PACKER FLUID DISPLACEMENT.

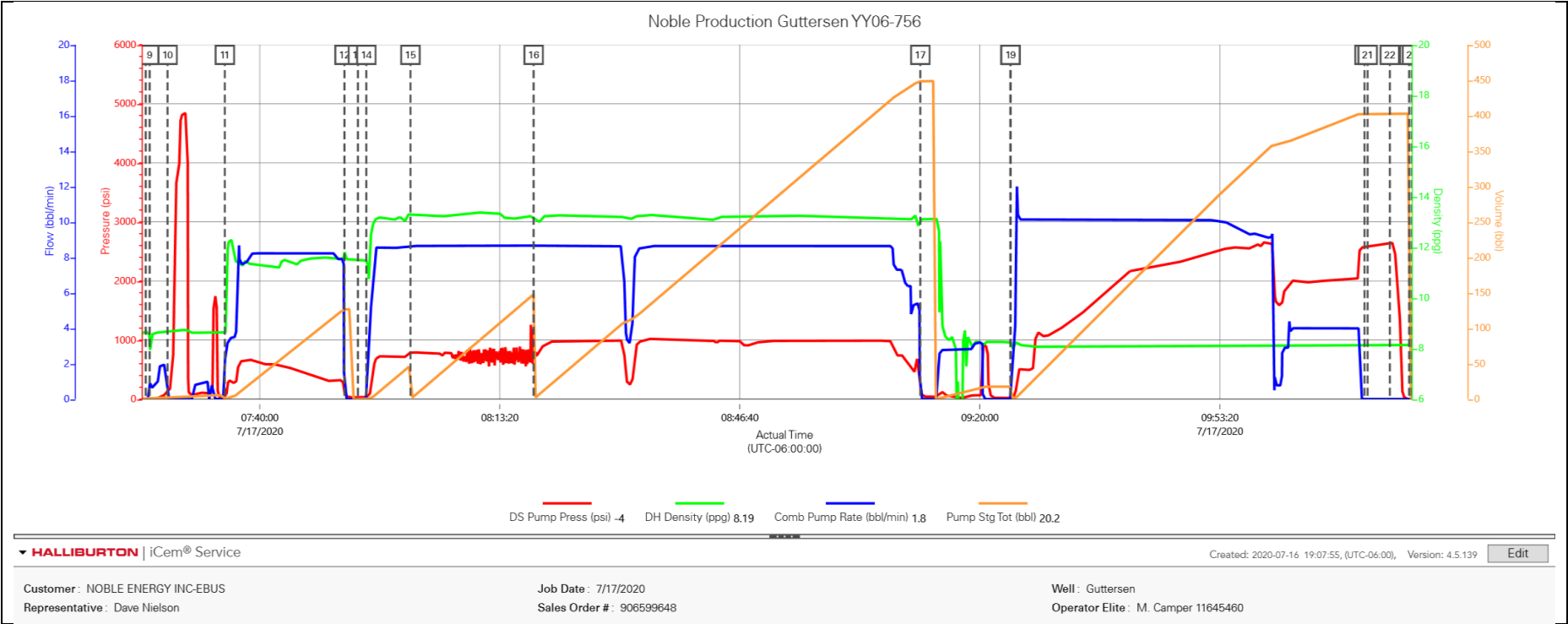
Event	5	Pre-Rig Up Safety Meeting	Pre-Rig Up Safety Meeting	7/17/2020	04:00:00	USER					HAZARD HUNT. DISCUSSED POSSIBLE HAZARDS ASSOCIATED WITH LOCATION, RIG UP AND WEATHER.
Event	6	Rig-Up Equipment	Rig-Up Equipment	7/17/2020	04:10:00	USER					CREW STAGED EQUIPMENT AND RIGGED UP BULK, IRON, AND WATER HOSES TO PERFORM JOB.
Event	7	Pre-Job Safety Meeting	Pre-Job Safety Meeting	7/17/2020	06:30:00	USER	-4.00	8.55	0.00	0.00	MEETING WITH HALLIBURTON AND RIG PERSONNEL. COMMUNICATED POTENTIAL SAFETY HAZARDS AND JOB DETAILS.
Event	8	Start Job	Start Job	7/17/2020	07:24:10	COM8	-11.00	8.67	0.00	0.00	START JOB DATA RECORDING.
Event	9	Drop Bottom Plug	Drop Bottom Plug	7/17/2020	07:24:43	USER	-11.00	8.18	0.40	0.00	PLUG WAS LOADED DIRECTLY INTO LANDING JOINT, VERIFIED BY COMPANY MAN.
Event	10	Test Lines	Test Lines	7/17/2020	07:27:12	COM8	167.00	8.66	0.00	3.20	KICKOUTS SET @ 500 PSI, KICKED OUT @ 550 PSI, 5TH GEAR STALL OUT @ 1650 PSI. PRESSURE TESTED IRON TO 4800.
Event	11	Pump Spacer 1	Pump Spacer 1	7/17/2020	07:35:09	COM8	28.00	8.62	2.00	0.10	PUMP 120 BBLS OF TUNED SPACER @ 11.5 LB/GAL, ADDED 30 GAL D-AIR, DENSITY VERIFIED BY PRESSURIZED MUD SCALES.
Event	12	Shutdown	Shutdown	7/17/2020	07:51:46	COM8	112.00	11.86	0.00	126.80	SHUTDOWN TO DROP BOTTOM PLUG #2.

Event	13	Drop Plug	Drop Plug	7/17/2020	07:53:38	COM8	29.00	11.50	0.00	0.00	PLUG LOADED DIRECTLY INTO LANDING JOINT, VERIFIED BY COMPANY MAN.
Event	14	Pump Cap Cement	Pump Cap Cement	7/17/2020	07:54:48	COM8	28.00	11.49	0.00	0.00	PUMP 140 SKS OF ELASTICEM @ 13.2 LB/GAL, 1.65 YIELD, 8.4 GAL/SK, 41.1 BBLS, CALCULATED TOC @ 2490', DENSITY VERIFIED BY PRESSURIZED MUD SCALES. ADDED 5 GAL OF D-AIR.
Event	15	Pump Lead Cement	Pump Lead Cement	7/17/2020	08:00:56	COM8	795.00	13.27	8.60	47.60	PUMP 471 SKS OF ELASTICEM @ 13.2 LB/GAL, 1.67 YIELD, 8.04 GAL/SK, 140.1 BBLS, CALCULATED TOL @ 3497', DENSITY VERIFIED BY PRESSURIZED MUD SCALES.
Event	16	Pump Tail Cement	Pump Tail Cement	7/17/2020	08:18:02	COM8	716.00	13.14	8.60	0.10	PUMP 1164 SKS OF NEOCEM @ 13.2 LB/GAL, 2.04 YIELD, 9.79 GAL/SK, 422.9 BBLS, CALCULATED TOT @ 6931, DENSITY VERIFIED BY PRESSURIZED MUD SCALES.
Event	17	Shutdown	Shutdown	7/17/2020	09:11:44	COM8	150.00	13.11	0.00	448.60	SHUTDOWN TO CLEAN PUMPS/LINES AND DROP TOP PLUG.
Event	18	Drop Top Plug	Drop Top Plug	7/17/2020	09:24:14	COM8	19.00	8.25	0.00	17.50	PLUG WAS LOADED DIRECTLY INTO LANDING JOINT, VERIFIED BY COMPANY MAN.

Event	19	Pump Displacement	Pump Displacement	7/17/2020	09:24:16	COM8	19.00	8.25	0.00	0.00	BEGIN CALCULATED DISPLACEMENT 400 BBL PACKER FLUID. 10 GAL MMCR IN FIRST 20 BBL, LAST 40 BBL WITH FRESH WATER. ADDED 5 GAL OF D-AIR.
Event	20	Bump Plug	Bump Plug	7/17/2020	10:13:25	COM8					PLUG BUMPED AT CALCULATED DISPLACEMENT, FINAL CIRCULATING PRESSURE OF 2100 PSI. INTERFACE RETURNED TO SURFACE.
Event	21	Other	Casing Test	7/17/2020	10:13:51	USER	2590.00	8.14	0.00	402.60	5 MIN CASING TEST AT 2600 PSI.
Event	22	Check Floats	Check Floats	7/17/2020	10:16:56	USER	2649.00	8.16	0.00	402.60	RELEASED PRESSURE BACK TO THE TRUCK, FLOATS HELD, 5 BBL TO THE TRUCK.
Event	23	End Job	End Job	7/17/2020	10:19:37	COM8	-4.00	8.13	0.00	0.00	END JOB DATA RECORDING.
Event	24	Pre-Rig Down Safety Meeting	Pre-Rig Down Safety Meeting	7/17/2020	10:20:00	USER	-7.00	8.13	0.00	0.00	DISCUSSED POSSIBLE HAZARDS ASSOCIATED WITH WEATHER, LOCATION AND RIGGING DOWN IRON AND HOSES.
Event	25	Rig-Down Completed	Rig-Down Completed	7/17/2020	11:00:00	USER					ALL HALLIBURTON ITEMS WERE STOWED FOR TRAVEL.
Event	26	Pre-Convoy Safety Meeting	Pre-Convoy Safety Meeting	7/17/2020	11:20:00	USER					DISCUSSED ROUTES HAZARDS AND COMMUNICATION WITH CREW.
Event	27	Crew Leave Location	Crew Leave Location	7/17/2020	11:30:00	USER					THANK YOU FOR USING HALLIBURTON - THOMAS HAAS AND CREW.

3.0 Attachments

3.1 Job Chart



3.2 Job Events

Noble Production Guttersen YY06-756						
Description	Actual Time (UTC-06:00:00)	DS Pump Press (psi)	DH Density (ppg)	Comb Pump Rate (bbl/min)	Pump Stg Tot (bbl)	
8 Start Job	07:24:10	-11.00	8.67	0.00	0.00	
9 Drop Bottom Plug	07:24:43	-11.00	8.18	0.40	0.00	
10 Test Lines	07:27:12	167.00	8.66	0.00	3.20	
11 Pump Spacer 1	07:35:09	28.00	8.62	2.00	0.10	
12 Shutdown	07:51:46	112.00	11.86	0.00	126.80	
13 Drop Plug	07:53:38	29.00	11.50	0.00	0.00	
14 Pump Cap Cement	07:54:48	28.00	11.49	0.00	0.00	
15 Pump Lead Cement	08:00:56	795.00	13.27	8.60	47.60	
16 Pump Tail Cement	08:18:02	716.00	13.14	8.60	0.10	
17 Shutdown	09:11:44	150.00	13.11	0.00	448.60	
18 Drop Top Plug	09:24:14	19.00	8.25	0.00	17.50	
19 Pump Displacement	09:24:16	19.00	8.25	0.00	0.00	
20 Bump Plug	10:13:25	2589.78	8.14	0.00	402.60	
21 Casing Test	10:13:51	2590.00	8.14	0.00	402.60	
22 Check Floats	10:16:56	2649.00	8.16	0.00	402.60	
23 End Job	10:19:37	-4.00	8.13	0.00	0.00	
24 Pre-Rig Down Safety Meeting	10:20:00	-7.00	8.13	0.00	0.00	

▼ HALLIBURTON | iCem® Service

Created: 2020-07-16 19:07:55, (UTC-06:00), Version: 4.5.139

Edit

Customer: NOBLE ENERGY INC-EBUS
Representative: Dave Nielson

Job Date: 7/17/2020
Sales Order #: 906599648

Well: Guttersen
Operator Elite: M. Camper 11645460