

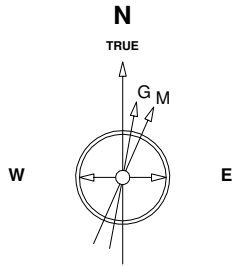
Great Western Operating Company, LLC

Location Colorado
Field Wattenburg
Installation Land

Slot Land JG 31-36D
Well Land JG 31-36D
Wellbore Land JG 31-36D (AWB)

Created by admin
Date plotted 14-Mar-2016

Plot reference is Land JG 31-36D (AWB).
Ref wellpath is Land JG 31-36D (AWP#1).
Coordinates are in Feet reference Land JG 31-36D.
True Vertical Depths are reference Rig Datum.
Measured Depths are reference Rig Datum.
Rig Datum: Actual Datum #1
Rig Datum to Mean Sea Level: 4946.60 ft.
Plot North is aligned to TRUE North.



28-Aug-2015
IGRF Model [1900.0-2020.0] Dip: 66.68 deg Field: 52453.1 nT
Lat: N40 5 17.5596 Long: W104 35 57.6708 Elev: 4932.60 ft
Magnetic North is 8.29 deg East of TRUE North
To correct azimuth from Magnetic to TRUE add 8.29 deg

Scale 1 cm = 200 ft

East (Feet) ->

-1200 -800 -400 0 400 800 1200 1600 2000 2400 2800 3200 3600 4000 4400

W2 Sec 31, T2N, R64W

Surface Location: 229 FSL, 929 FWL

Surface Location: 229 FSL, 929 FWL

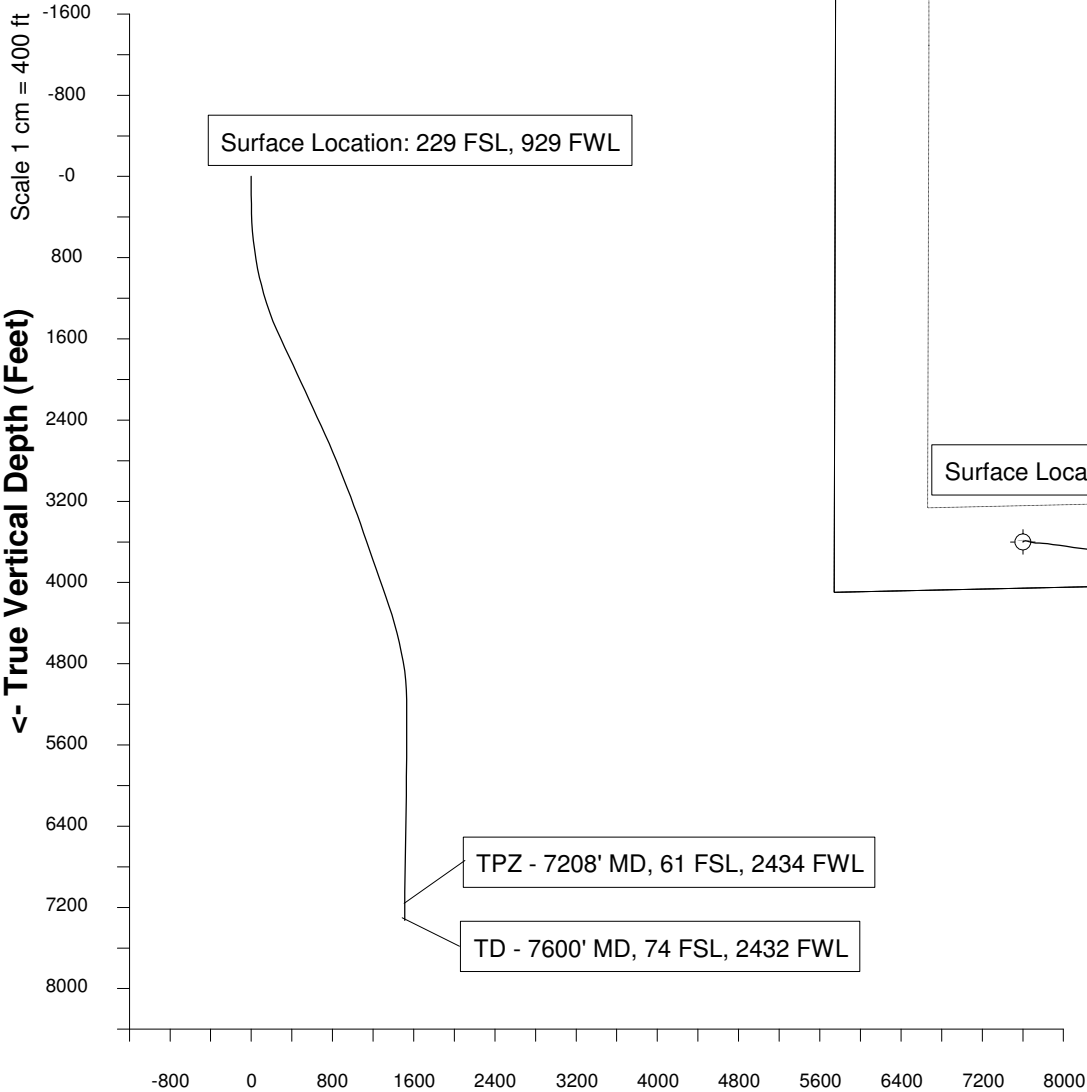
TPZ - 7208' MD, 61 FSL, 2434 FWL

TD - 7600' MD, 74 FSL, 2432 FWL

<- North(Feet)

Scale 1 cm = 200 ft

<- True Vertical Depth (Feet)



[illegible]