

# BONANZA CREEK ENERGY

Location: COLORADO Slot: SLOT#05 STATE PRONGHORN FEDERAL 14-44-30HNB (2200'FSL & 617'FWL, SEC.30)  
Field: WELD COUNTY (NAD83/TRUE) Well: STATE PRONGHORN FEDERAL 14-44-30HNB  
Facility: SEC.30-T05N-R61W Wellbore: STATE PRONGHORN FEDERAL 14-44-30HNB PWB

Plot reference wellpath is STATE PRONGHORN FEDERAL 14-44-30HNB (REV-E.0) PWP

Grid System: NAD83 / Lambert Colorado SP, Northern Zone (501), US feet  
True vertical depths are referenced to RIG (17) (4525.9'GL+17'KB@4542.9') (RKB)  
North Reference: True north  
Measured depths are referenced to RIG (17) (4525.9'GL+17'KB@4542.9') (RKB)  
Scale: True distance  
RIG (17) (4525.9'GL+17'KB@4542.9') (RKB) to Mean Sea Level: 4542.9 feet  
Depths are in feet  
Mean Sea Level to Ground level (At Slot: SLOT#05 STATE PRONGHORN FEDERAL 14-44-30HNB (2200'FSL & 617'FWL, SEC.30)): 0 feet  
Created by: robale01 on 2019-09-18  
Coordinates are in feet referenced to Slot  
Database: WA DENVER

## Location Information

Facility Name				Grid East (US ft)	Grid North (US ft)	Latitude	Longitude
SEC.30-T05N-R61W				3346523.303	1380201.706	40°22'13.882"N	104°14'34.272"W
Slot	Local N (ft)	Local E (ft)	Grid East (US ft)	Grid North (US ft)	Latitude	Longitude	
SLOT#05 STATE PRONGHORN FEDERAL 14-44-30HNB (2200'FSL & 617'FWL, SEC.30)	41.94	32.57	3346558.696	1380189.254	40°22'13.882"N	104°14'33.852"W	
RIG (17) (4525.9'GL+17'KB@4542.9') (RKB) to Ground level (At Slot: SLOT#05 STATE PRONGHORN FEDERAL 14-44-30HNB (2200'FSL & 617'FWL, SEC.30))							-4542.91
Mean Sea Level to Ground level (At Slot: SLOT#05 STATE PRONGHORN FEDERAL 14-44-30HNB (2200'FSL & 617'FWL, SEC.30))							01
RIG (17) (4525.9'GL+17'KB@4542.9') (RKB) to Mean Sea Level							-4542.91

## Survey Program

Start MD (ft)	End MD (ft)	Tool	Model	Log Name/Comment	Wellbore
17.00	1600.00	BHI NavTrak	BHI NavTrak (Rotating)		STATE PRONGHORN FEDERAL 14-44-30HNB PWB
1600.00	11605.66	BHI AutoTrak Curve	BHI AutoTrak Curve (Short)		STATE PRONGHORN FEDERAL 14-44-30HNB PWB

## Hole and Casing Sections

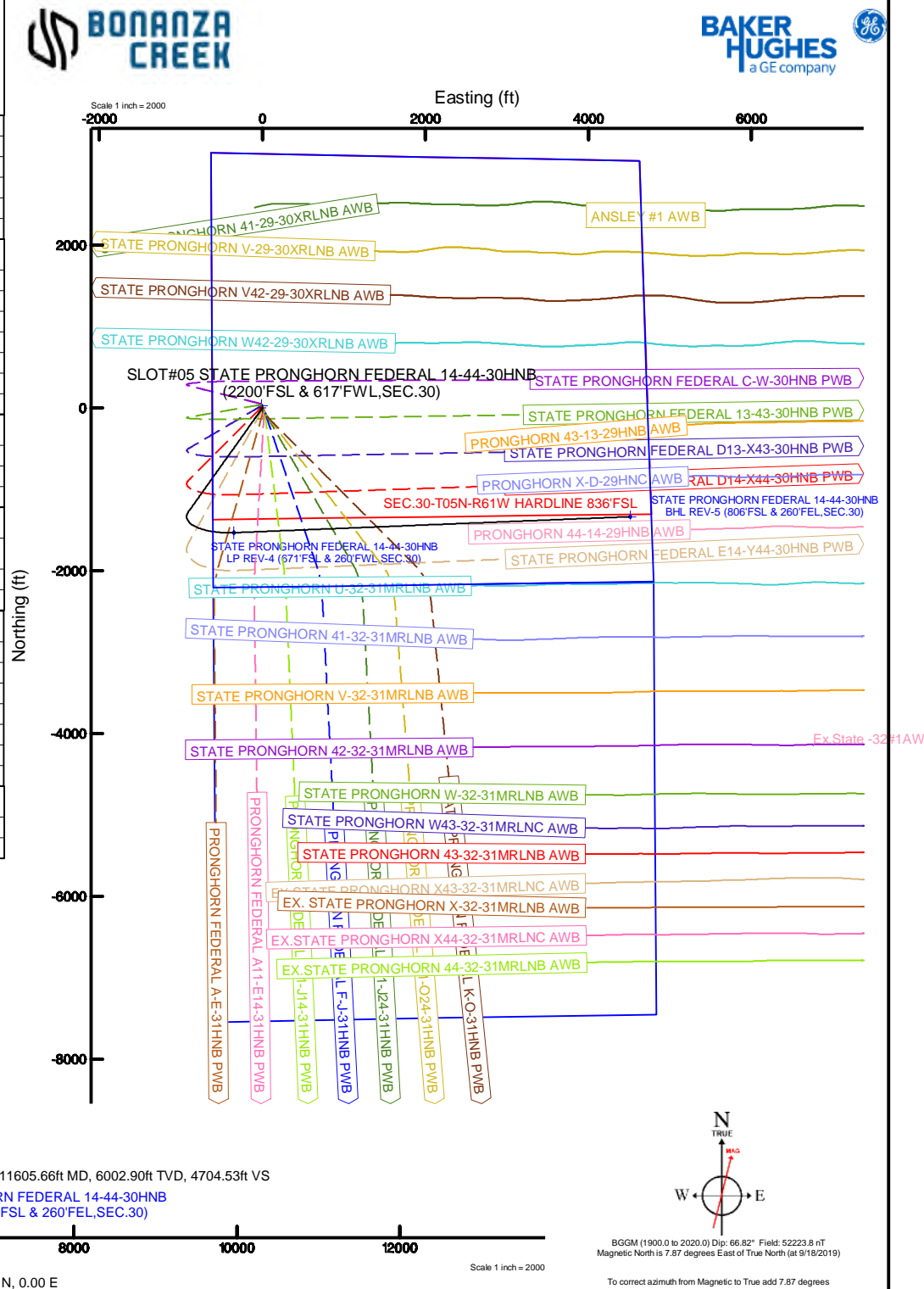
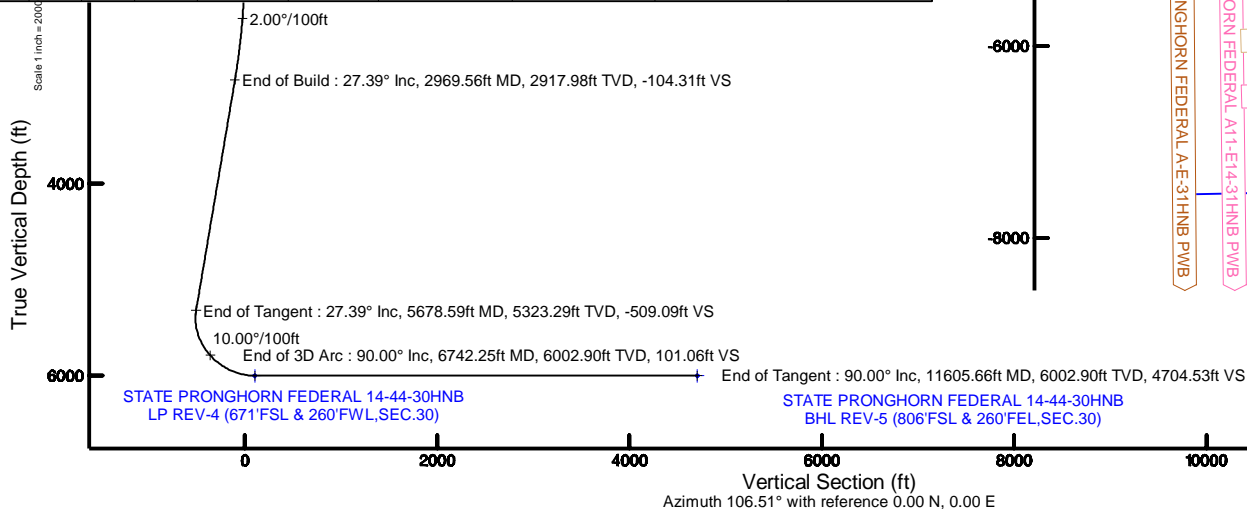
Name	Start MD (ft)	End MD (ft)	Interval (ft)	Start TVD (ft)	End TVD (ft)	Start Local N (ft)	Start Local E (ft)	End Local N (ft)	End Local E (ft)	Wellbore
9.625in Casing	17.00	1600.00	1583.00	17.00	1600.00	0.00	0.00	0.00	0.00	STATE PRONGHORN FEDERAL 14-44-30HNB PWB
8.5in Open Hole	1600.00	11605.66	10005.66	1600.00	6002.90	0.00	0.00	-1336.72	4510.63	STATE PRONGHORN FEDERAL 14-44-30HNB PWB

## Well Profile Data

Design Comment	MD (ft)	Inc (°)	Az (°)	TVD (ft)	Local N (ft)	Local E (ft)	DLS (°/100ft)	VS (ft)
Tie On	17.00	0.000	215.459	17.00	0.00	0.00	0.00	0.00
End of Tangent	1600.00	0.000	215.459	1600.00	0.00	0.00	0.00	0.00
End of Build	2969.56	27.391	215.459	2917.98	-261.61	-186.32	2.00	-104.31
End of Tangent	5678.59	27.391	215.459	5323.29	-1276.78	-909.34	0.00	-509.09
End of 3D Arc	6742.25	90.000	87.690	6002.90	-1532.76	-348.83	10.00	101.06
End of Tangent	11605.66	90.000	87.690	6002.90	-1336.72	4510.63	0.00	4704.53

## Bottom Hole Location

MD (ft)	Inc (°)	Az (°)	TVD (ft)	Local N (ft)	Local E (ft)	Grid East (US ft)	Grid North (US ft)	Latitude	Longitude
11605.66	90.000	87.690	6002.90	-1336.72	4510.63	3350187.39	1378915.83	40°22'00.168"N	104°14'35.579"W





# Planned Wellpath Report

STATE PRONGHORN FEDERAL 14-44-30HNB (REV-E.0) PWP

Page 1 of 8



## REFERENCE WELLPATH IDENTIFICATION

Operator	BONANZA CREEK ENERGY	Slot	SLOT#05 STATE PRONGHORN FEDERAL 14-44-30HNB (2200'FSL & 617'FWL,SEC.30)
Area	COLORADO	Well	STATE PRONGHORN FEDERAL 14-44-30HNB
Field	WELD COUNTY (NAD83/TRUE)	Wellbore	STATE PRONGHORN FEDERAL 14-44-30HNB PWB
Facility	SEC.30-T05N-R61W		

## REPORT SETUP INFORMATION

Projection System	NAD83 / Lambert Colorado SP, Northern Zone (501), US feet	Software System	WellArchitect® 5.1
North Reference	True	User	Robiale01
Scale	0.999959	Report Generated	9/18/2019 at 2:36:50 PM
Convergence at slot	0.80° East	Database/Source file	WA DENVER/STATE_PRONGHORN_FEDERAL_14-44-30HNB_REV-E.0_PWP.xml

## WELLPATH LOCATION

	Local coordinates		Grid coordinates		Geographic coordinates	
	North[ft]	East[ft]	Easting[US ft]	Northing[US ft]	Latitude	Longitude
Slot Location	-61.94	32.57	3345658.70	1380189.25	40°22'13.381"N	104°15'33.852"W
Facility Reference Pt			3345625.26	1380250.73	40°22'13.993"N	104°15'34.273"W
Field Reference Pt			3224525.77	1254425.87	40°01'44.400"N	104°41'53.556"W

## WELLPATH DATUM

Calculation method	Minimum curvature	RIG (17') (4525.9'GL+17'KB@4542.9') (RKB) to Facility Vertical Datum	4542.90ft
Horizontal Reference Pt	Slot	RIG (17') (4525.9'GL+17'KB@4542.9') (RKB) to Mean Sea Level	4542.90ft
Vertical Reference Pt	RIG (17') (4525.9'GL+17'KB@4542.9') (RKB)	RIG (17') (4525.9'GL+17'KB@4542.9') (RKB) to Ground Level at Slot (SLOT#05 STATE PRONGHORN FEDERAL 14-44-30HNB (2200'FSL & 617'FWL,SEC.30))	4542.90ft
MD Reference Pt	RIG (17') (4525.9'GL+17'KB@4542.9') (RKB)	Section Origin	N 0.00, E 0.00 ft
Field Vertical Reference	Mean Sea Level	Section Azimuth	106.51°



# Planned Wellpath Report

STATE PRONGHORN FEDERAL 14-44-30HNB (REV-E.0) PWP

Page 2 of 8



REFERENCE WELLPATH IDENTIFICATION			
Operator	BONANZA CREEK ENERGY	Slot	SLOT#05 STATE PRONGHORN FEDERAL 14-44-30HNB (2200'FSL & 617'FWL,SEC.30)
Area	COLORADO	Well	STATE PRONGHORN FEDERAL 14-44-30HNB
Field	WELD COUNTY (NAD83/TRUE)	Wellbore	STATE PRONGHORN FEDERAL 14-44-30HNB PWB
Facility	SEC.30-T05N-R61W		

WELLPATH DATA (122 stations) † = interpolated/extrapolated station										
MD [ft]	Inclination [°]	Azimuth [°]	TVD [ft]	Vert Sect [ft]	North [ft]	East [ft]	Latitude	Longitude	DLS [°/100ft]	Comments
0.00†	0.000	215.459	0.00	0.00	0.00	0.00	40°22'13.381"N	104°15'33.852"W	0.00	
17.00	0.000	215.459	17.00	0.00	0.00	0.00	40°22'13.381"N	104°15'33.852"W	0.00	Tie On
117.00†	0.000	215.459	117.00	0.00	0.00	0.00	40°22'13.381"N	104°15'33.852"W	0.00	
217.00†	0.000	215.459	217.00	0.00	0.00	0.00	40°22'13.381"N	104°15'33.852"W	0.00	
317.00†	0.000	215.459	317.00	0.00	0.00	0.00	40°22'13.381"N	104°15'33.852"W	0.00	
417.00†	0.000	215.459	417.00	0.00	0.00	0.00	40°22'13.381"N	104°15'33.852"W	0.00	
517.00†	0.000	215.459	517.00	0.00	0.00	0.00	40°22'13.381"N	104°15'33.852"W	0.00	
617.00†	0.000	215.459	617.00	0.00	0.00	0.00	40°22'13.381"N	104°15'33.852"W	0.00	
717.00†	0.000	215.459	717.00	0.00	0.00	0.00	40°22'13.381"N	104°15'33.852"W	0.00	
817.00†	0.000	215.459	817.00	0.00	0.00	0.00	40°22'13.381"N	104°15'33.852"W	0.00	
917.00†	0.000	215.459	917.00	0.00	0.00	0.00	40°22'13.381"N	104°15'33.852"W	0.00	
1017.00†	0.000	215.459	1017.00	0.00	0.00	0.00	40°22'13.381"N	104°15'33.852"W	0.00	
1117.00†	0.000	215.459	1117.00	0.00	0.00	0.00	40°22'13.381"N	104°15'33.852"W	0.00	
1217.00†	0.000	215.459	1217.00	0.00	0.00	0.00	40°22'13.381"N	104°15'33.852"W	0.00	
1317.00†	0.000	215.459	1317.00	0.00	0.00	0.00	40°22'13.381"N	104°15'33.852"W	0.00	
1417.00†	0.000	215.459	1417.00	0.00	0.00	0.00	40°22'13.381"N	104°15'33.852"W	0.00	
1517.00†	0.000	215.459	1517.00	0.00	0.00	0.00	40°22'13.381"N	104°15'33.852"W	0.00	
1600.00	0.000	215.459	1600.00	0.00	0.00	0.00	40°22'13.381"N	104°15'33.852"W	0.00	End of Tangent
1617.00†	0.340	215.459	1617.00	-0.02	-0.04	-0.03	40°22'13.381"N	104°15'33.852"W	2.00	
1717.00†	2.340	215.459	1716.97	-0.78	-1.95	-1.39	40°22'13.362"N	104°15'33.870"W	2.00	
1817.00†	4.340	215.459	1816.79	-2.67	-6.69	-4.77	40°22'13.315"N	104°15'33.913"W	2.00	
1917.00†	6.340	215.459	1916.35	-5.69	-14.27	-10.16	40°22'13.240"N	104°15'33.983"W	2.00	
2017.00†	8.340	215.459	2015.53	-9.84	-24.68	-17.58	40°22'13.137"N	104°15'34.079"W	2.00	
2117.00†	10.340	215.459	2114.20	-15.11	-37.90	-26.99	40°22'13.006"N	104°15'34.201"W	2.00	
2217.00†	12.340	215.459	2212.24	-21.50	-53.91	-38.40	40°22'12.848"N	104°15'34.348"W	2.00	
2317.00†	14.340	215.459	2309.54	-28.99	-72.70	-51.78	40°22'12.663"N	104°15'34.521"W	2.00	
2417.00†	16.340	215.459	2405.97	-37.58	-94.25	-67.13	40°22'12.450"N	104°15'34.719"W	2.00	
2517.00†	18.340	215.459	2501.42	-47.26	-118.53	-84.42	40°22'12.210"N	104°15'34.943"W	2.00	
2617.00†	20.340	215.459	2595.77	-58.01	-145.50	-103.63	40°22'11.943"N	104°15'35.191"W	2.00	
2717.00†	22.340	215.459	2688.91	-69.83	-175.14	-124.74	40°22'11.650"N	104°15'35.463"W	2.00	



# Planned Wellpath Report

STATE PRONGHORN FEDERAL 14-44-30HNB (REV-E.0) PWP

Page 3 of 8



REFERENCE WELLPATH IDENTIFICATION			
Operator	BONANZA CREEK ENERGY	Slot	SLOT#05 STATE PRONGHORN FEDERAL 14-44-30HNB (2200'FSL & 617'FWL,SEC.30)
Area	COLORADO	Well	STATE PRONGHORN FEDERAL 14-44-30HNB
Field	WELD COUNTY (NAD83/TRUE)	Wellbore	STATE PRONGHORN FEDERAL 14-44-30HNB PWB
Facility	SEC.30-T05N-R61W		

WELLPATH DATA (122 stations) † = interpolated/extrapolated station										
MD [ft]	Inclination [°]	Azimuth [°]	TVD [ft]	Vert Sect [ft]	North [ft]	East [ft]	Latitude	Longitude	DLS [°/100ft]	Comments
2817.00†	24.340	215.459	2780.72	-82.70	-207.41	-147.72	40°22'11.331"N	104°15'35.760"W	2.00	
2917.00†	26.340	215.459	2871.10	-96.60	-242.27	-172.55	40°22'10.987"N	104°15'36.081"W	2.00	
2969.56	27.391	215.459	2917.98	-104.31	-261.61	-186.32	40°22'10.796"N	104°15'36.259"W	2.00	End of Build
3017.00†	27.391	215.459	2960.11	-111.40	-279.39	-198.99	40°22'10.620"N	104°15'36.423"W	0.00	
3117.00†	27.391	215.459	3048.89	-126.34	-316.86	-225.68	40°22'10.250"N	104°15'36.768"W	0.00	
3217.00†	27.391	215.459	3137.68	-141.28	-354.34	-252.36	40°22'09.879"N	104°15'37.112"W	0.00	
3317.00†	27.391	215.459	3226.47	-156.23	-391.81	-279.05	40°22'09.509"N	104°15'37.457"W	0.00	
3417.00†	27.391	215.459	3315.26	-171.17	-429.28	-305.74	40°22'09.139"N	104°15'37.802"W	0.00	
3517.00†	27.391	215.459	3404.05	-186.11	-466.76	-332.43	40°22'08.769"N	104°15'38.147"W	0.00	
3617.00†	27.391	215.459	3492.84	-201.05	-504.23	-359.12	40°22'08.398"N	104°15'38.492"W	0.00	
3717.00†	27.391	215.459	3581.63	-215.99	-541.71	-385.81	40°22'08.028"N	104°15'38.836"W	0.00	
3817.00†	27.391	215.459	3670.41	-230.93	-579.18	-412.50	40°22'07.658"N	104°15'39.181"W	0.00	
3917.00†	27.391	215.459	3759.20	-245.88	-616.65	-439.19	40°22'07.287"N	104°15'39.526"W	0.00	
4017.00†	27.391	215.459	3847.99	-260.82	-654.13	-465.88	40°22'06.917"N	104°15'39.871"W	0.00	
4117.00†	27.391	215.459	3936.78	-275.76	-691.60	-492.57	40°22'06.547"N	104°15'40.216"W	0.00	
4217.00†	27.391	215.459	4025.57	-290.70	-729.07	-519.26	40°22'06.176"N	104°15'40.560"W	0.00	
4317.00†	27.391	215.459	4114.36	-305.64	-766.55	-545.95	40°22'05.806"N	104°15'40.905"W	0.00	
4417.00†	27.391	215.459	4203.15	-320.58	-804.02	-572.64	40°22'05.436"N	104°15'41.250"W	0.00	
4517.00†	27.391	215.459	4291.94	-335.53	-841.49	-599.32	40°22'05.066"N	104°15'41.595"W	0.00	
4617.00†	27.391	215.459	4380.72	-350.47	-878.97	-626.01	40°22'04.695"N	104°15'41.940"W	0.00	
4717.00†	27.391	215.459	4469.51	-365.41	-916.44	-652.70	40°22'04.325"N	104°15'42.284"W	0.00	
4817.00†	27.391	215.459	4558.30	-380.35	-953.91	-679.39	40°22'03.955"N	104°15'42.629"W	0.00	
4917.00†	27.391	215.459	4647.09	-395.29	-991.39	-706.08	40°22'03.584"N	104°15'42.974"W	0.00	
5017.00†	27.391	215.459	4735.88	-410.23	-1028.86	-732.77	40°22'03.214"N	104°15'43.319"W	0.00	
5117.00†	27.391	215.459	4824.67	-425.18	-1066.34	-759.46	40°22'02.844"N	104°15'43.663"W	0.00	
5217.00†	27.391	215.459	4913.46	-440.12	-1103.81	-786.15	40°22'02.473"N	104°15'44.008"W	0.00	
5317.00†	27.391	215.459	5002.24	-455.06	-1141.28	-812.84	40°22'02.103"N	104°15'44.353"W	0.00	
5417.00†	27.391	215.459	5091.03	-470.00	-1178.76	-839.53	40°22'01.733"N	104°15'44.698"W	0.00	
5517.00†	27.391	215.459	5179.82	-484.94	-1216.23	-866.22	40°22'01.362"N	104°15'45.043"W	0.00	
5617.00†	27.391	215.459	5268.61	-499.88	-1253.70	-892.91	40°22'00.992"N	104°15'45.387"W	0.00	



# Planned Wellpath Report

STATE PRONGHORN FEDERAL 14-44-30HNB (REV-E.0) PWP

Page 4 of 8



REFERENCE WELLPATH IDENTIFICATION			
Operator	BONANZA CREEK ENERGY	Slot	SLOT#05 STATE PRONGHORN FEDERAL 14-44-30HNB (2200'FSL & 617'FWL,SEC.30)
Area	COLORADO	Well	STATE PRONGHORN FEDERAL 14-44-30HNB
Field	WELD COUNTY (NAD83/TRUE)	Wellbore	STATE PRONGHORN FEDERAL 14-44-30HNB PWB
Facility	SEC.30-T05N-R61W		

WELLPATH DATA (122 stations) † = interpolated/extrapolated station										
MD [ft]	Inclination [°]	Azimuth [°]	TVD [ft]	Vert Sect [ft]	North [ft]	East [ft]	Latitude	Longitude	DLS [°/100ft]	Comments
5678.59	27.391	215.459	5323.29	-509.09	-1276.78	-909.34	40°22'00.764"N	104°15'45.600"W	0.00	End of Tangent
5717.00†	25.397	208.065	5357.71	-513.61	-1291.25	-918.35	40°22'00.621"N	104°15'45.716"W	10.00	
5817.00†	22.409	184.327	5449.33	-513.88	-1329.28	-929.90	40°22'00.245"N	104°15'45.865"W	10.00	
5917.00†	23.434	158.596	5541.67	-497.60	-1366.89	-924.07	40°21'59.874"N	104°15'45.790"W	10.00	
6017.00†	28.033	137.978	5631.91	-465.26	-1402.96	-901.02	40°21'59.517"N	104°15'45.492"W	10.00	
6117.00†	34.814	123.778	5717.31	-417.84	-1436.37	-861.47	40°21'59.187"N	104°15'44.981"W	10.00	
6217.00†	42.743	113.998	5795.28	-356.78	-1466.12	-806.60	40°21'58.893"N	104°15'44.272"W	10.00	
6317.00†	51.283	106.859	5863.44	-283.94	-1491.30	-738.09	40°21'58.644"N	104°15'43.387"W	10.00	
6417.00†	60.162	101.278	5919.74	-201.53	-1511.14	-658.01	40°21'58.448"N	104°15'42.353"W	10.00	
6517.00†	69.237	96.623	5962.45	-112.05	-1525.05	-568.81	40°21'58.311"N	104°15'41.200"W	10.00	
6617.00†	78.423	92.503	5990.28	-18.23	-1532.60	-473.19	40°21'58.236"N	104°15'39.965"W	10.00	
6717.00†	87.663	88.647	6002.39	77.09	-1533.57	-374.06	40°21'58.227"N	104°15'38.684"W	10.00	
6742.25	90.000	87.690	6002.90 <sup>†</sup>	101.06	-1532.76	-348.83	40°21'58.235"N	104°15'38.358"W	10.00	End of 3D Arc
6817.00†	90.000	87.690	6002.90	171.81	-1529.75	-274.14	40°21'58.264"N	104°15'37.393"W	0.00	
6917.00†	90.000	87.690	6002.90	266.47	-1525.72	-174.22	40°21'58.304"N	104°15'36.103"W	0.00	
7017.00†	90.000	87.690	6002.90	361.12	-1521.68	-74.30	40°21'58.344"N	104°15'34.812"W	0.00	
7117.00†	90.000	87.690	6002.90	455.78	-1517.65	25.61	40°21'58.384"N	104°15'33.521"W	0.00	
7217.00†	90.000	87.690	6002.90	550.43	-1513.62	125.53	40°21'58.424"N	104°15'32.230"W	0.00	
7317.00†	90.000	87.690	6002.90	645.09	-1509.59	225.45	40°21'58.464"N	104°15'30.939"W	0.00	
7417.00†	90.000	87.690	6002.90	739.74	-1505.56	325.37	40°21'58.503"N	104°15'29.648"W	0.00	
7517.00†	90.000	87.690	6002.90	834.40	-1501.53	425.29	40°21'58.543"N	104°15'28.358"W	0.00	
7617.00†	90.000	87.690	6002.90	929.05	-1497.50	525.21	40°21'58.583"N	104°15'27.067"W	0.00	
7717.00†	90.000	87.690	6002.90	1023.71	-1493.47	625.13	40°21'58.623"N	104°15'25.776"W	0.00	
7817.00†	90.000	87.690	6002.90	1118.36	-1489.44	725.05	40°21'58.663"N	104°15'24.485"W	0.00	
7917.00†	90.000	87.690	6002.90	1213.02	-1485.41	824.96	40°21'58.703"N	104°15'23.194"W	0.00	
8017.00†	90.000	87.690	6002.90	1307.67	-1481.37	924.88	40°21'58.742"N	104°15'21.903"W	0.00	
8117.00†	90.000	87.690	6002.90	1402.33	-1477.34	1024.80	40°21'58.782"N	104°15'20.613"W	0.00	
8217.00†	90.000	87.690	6002.90	1496.98	-1473.31	1124.72	40°21'58.822"N	104°15'19.322"W	0.00	
8317.00†	90.000	87.690	6002.90	1591.64	-1469.28	1224.64	40°21'58.862"N	104°15'18.031"W	0.00	
8417.00†	90.000	87.690	6002.90	1686.29	-1465.25	1324.56	40°21'58.901"N	104°15'16.740"W	0.00	





# Planned Wellpath Report

STATE PRONGHORN FEDERAL 14-44-30HNB (REV-E.0) PWP

Page 5 of 8



REFERENCE WELLPATH IDENTIFICATION			
Operator	BONANZA CREEK ENERGY	Slot	SLOT#05 STATE PRONGHORN FEDERAL 14-44-30HNB (2200'FSL & 617'FWL,SEC.30)
Area	COLORADO	Well	STATE PRONGHORN FEDERAL 14-44-30HNB
Field	WELD COUNTY (NAD83/TRUE)	Wellbore	STATE PRONGHORN FEDERAL 14-44-30HNB PWB
Facility	SEC.30-T05N-R61W		

WELLPATH DATA (122 stations) † = interpolated/extrapolated station										
MD [ft]	Inclination [°]	Azimuth [°]	TVD [ft]	Vert Sect [ft]	North [ft]	East [ft]	Latitude	Longitude	DLS [°/100ft]	Comments
8517.00†	90.000	87.690	6002.90	1780.95	-1461.22	1424.48	40°21'58.941"N	104°15'15.449"W	0.00	
8617.00†	90.000	87.690	6002.90	1875.60	-1457.19	1524.40	40°21'58.981"N	104°15'14.158"W	0.00	
8717.00†	90.000	87.690	6002.90	1970.26	-1453.16	1624.31	40°21'59.021"N	104°15'12.867"W	0.00	
8817.00†	90.000	87.690	6002.90	2064.91	-1449.13	1724.23	40°21'59.061"N	104°15'11.577"W	0.00	
8917.00†	90.000	87.690	6002.90	2159.57	-1445.10	1824.15	40°21'59.100"N	104°15'10.286"W	0.00	
9017.00†	90.000	87.690	6002.90	2254.22	-1441.06	1924.07	40°21'59.140"N	104°15'08.995"W	0.00	
9117.00†	90.000	87.690	6002.90	2348.88	-1437.03	2023.99	40°21'59.180"N	104°15'07.704"W	0.00	
9217.00†	90.000	87.690	6002.90	2443.53	-1433.00	2123.91	40°21'59.220"N	104°15'06.413"W	0.00	
9317.00†	90.000	87.690	6002.90	2538.19	-1428.97	2223.83	40°21'59.259"N	104°15'05.122"W	0.00	
9417.00†	90.000	87.690	6002.90	2632.85	-1424.94	2323.75	40°21'59.299"N	104°15'03.831"W	0.00	
9517.00†	90.000	87.690	6002.90	2727.50	-1420.91	2423.66	40°21'59.339"N	104°15'02.541"W	0.00	
9617.00†	90.000	87.690	6002.90	2822.16	-1416.88	2523.58	40°21'59.379"N	104°15'01.250"W	0.00	
9717.00†	90.000	87.690	6002.90	2916.81	-1412.85	2623.50	40°21'59.418"N	104°14'59.959"W	0.00	
9817.00†	90.000	87.690	6002.90	3011.47	-1408.82	2723.42	40°21'59.458"N	104°14'58.668"W	0.00	
9917.00†	90.000	87.690	6002.90	3106.12	-1404.79	2823.34	40°21'59.498"N	104°14'57.377"W	0.00	
10017.00†	90.000	87.690	6002.90	3200.78	-1400.75	2923.26	40°21'59.537"N	104°14'56.086"W	0.00	
10117.00†	90.000	87.690	6002.90	3295.43	-1396.72	3023.18	40°21'59.577"N	104°14'54.796"W	0.00	
10217.00†	90.000	87.690	6002.90	3390.09	-1392.69	3123.10	40°21'59.617"N	104°14'53.505"W	0.00	
10317.00†	90.000	87.690	6002.90	3484.74	-1388.66	3223.01	40°21'59.657"N	104°14'52.214"W	0.00	
10417.00†	90.000	87.690	6002.90	3579.40	-1384.63	3322.93	40°21'59.696"N	104°14'50.923"W	0.00	
10517.00†	90.000	87.690	6002.90	3674.05	-1380.60	3422.85	40°21'59.736"N	104°14'49.632"W	0.00	
10617.00†	90.000	87.690	6002.90	3768.71	-1376.57	3522.77	40°21'59.776"N	104°14'48.341"W	0.00	
10717.00†	90.000	87.690	6002.90	3863.36	-1372.54	3622.69	40°21'59.815"N	104°14'47.050"W	0.00	
10817.00†	90.000	87.690	6002.90	3958.02	-1368.51	3722.61	40°21'59.855"N	104°14'45.760"W	0.00	
10917.00†	90.000	87.690	6002.90	4052.67	-1364.48	3822.53	40°21'59.895"N	104°14'44.469"W	0.00	
11017.00†	90.000	87.690	6002.90	4147.33	-1360.44	3922.44	40°21'59.934"N	104°14'43.178"W	0.00	
11117.00†	90.000	87.690	6002.90	4241.98	-1356.41	4022.36	40°21'59.974"N	104°14'41.887"W	0.00	
11217.00†	90.000	87.690	6002.90	4336.64	-1352.38	4122.28	40°22'00.014"N	104°14'40.596"W	0.00	
11317.00†	90.000	87.690	6002.90	4431.29	-1348.35	4222.20	40°22'00.053"N	104°14'39.305"W	0.00	
11417.00†	90.000	87.690	6002.90	4525.95	-1344.32	4322.12	40°22'00.093"N	104°14'38.014"W	0.00	



# Planned Wellpath Report

STATE PRONGHORN FEDERAL 14-44-30HNB (REV-E.0) PWP

Page 6 of 8



## REFERENCE WELLPATH IDENTIFICATION

Operator	BONANZA CREEK ENERGY	Slot	SLOT#05 STATE PRONGHORN FEDERAL 14-44-30HNB (2200'FSL & 617'FWL,SEC.30)
Area	COLORADO	Well	STATE PRONGHORN FEDERAL 14-44-30HNB
Field	WELD COUNTY (NAD83/TRUE)	Wellbore	STATE PRONGHORN FEDERAL 14-44-30HNB PWB
Facility	SEC.30-T05N-R61W		

## WELLPATH DATA (122 stations) † = interpolated/extrapolated station

MD [ft]	Inclination [°]	Azimuth [°]	TVD [ft]	Vert Sect [ft]	North [ft]	East [ft]	Latitude	Longitude	DLS [°/100ft]	Comments
11517.00†	90.000	87.690	6002.90	4620.60	-1340.29	4422.04	40°22'00.133"N	104°14'36.724"W	0.00	
11605.66	90.000	87.690	6002.90 <sup>2</sup>	4704.53	-1336.72	4510.63	40°22'00.168"N	104°14'35.579"W	0.00	End of Tangent

## HOLE & CASING SECTIONS

- Ref Wellbore: STATE PRONGHORN FEDERAL 14-44-30HNB PWB      Ref Wellpath: STATE PRONGHORN FEDERAL 14-44-30HNB (REV-E.0) PWP

String/Diameter	Start MD [ft]	End MD [ft]	Interval [ft]	Start TVD [ft]	End TVD [ft]	Start N/S [ft]	Start E/W [ft]	End N/S [ft]	End E/W [ft]
9.625in Casing	17.00	1600.00	1583.00	17.00	1600.00	0.00	0.00	0.00	0.00
8.5in Open Hole	1600.00	11605.66	10005.66	1600.00	6002.90	0.00	0.00	-1336.72	4510.63

## TARGETS

Name	MD [ft]	TVD [ft]	North [ft]	East [ft]	Grid East [US ft]	Grid North [US ft]	Latitude	Longitude	Shape
SEC.30-T05N-R61W HARDLINE 836'FSL		0.30	26.56	-13.93	3345644.39	1380215.61	40°22'13.643"N	104°15'34.032"W	polygon
2) STATE PRONGHORN FEDERAL 14-44-30HNB BHL REV-5 (806'FSL & 260'FEL,SEC.30)	11605.66	6002.90	-1336.72	4510.63	3350187.39	1378915.83	40°22'00.168"N	104°14'35.579"W	point
1) STATE PRONGHORN FEDERAL 14-44-30HNB LP REV-4 (671'FSL & 260'FWL,SEC.30)	6742.25	6002.90	-1532.76	-348.83	3345331.36	1378651.83	40°21'58.235"N	104°15'38.358"W	point
SEC.30-T05N-R61W		11998.90	1874.39	10518.24	3356149.23	1382210.53	40°22'31.881"N	104°13'17.949"W	polygon
SEC.31-T05N-R61W		11998.90	-3365.80	9255.95	3354960.43	1376953.41	40°21'40.104"N	104°13'34.284"W	polygon



# Planned Wellpath Report

STATE PRONGHORN FEDERAL 14-44-30HNB (REV-E.0) PWP

Page 7 of 8



## REFERENCE WELLPATH IDENTIFICATION

Operator	BONANZA CREEK ENERGY	Slot	SLOT#05 STATE PRONGHORN FEDERAL 14-44-30HNB (2200'FSL & 617'FWL,SEC.30)
Area	COLORADO	Well	STATE PRONGHORN FEDERAL 14-44-30HNB
Field	WELD COUNTY (NAD83/TRUE)	Wellbore	STATE PRONGHORN FEDERAL 14-44-30HNB PWB
Facility	SEC.30-T05N-R61W		

## SURVEY PROGRAM -

Ref Wellbore: STATE PRONGHORN FEDERAL 14-44-30HNB PWB      Ref Wellpath: STATE PRONGHORN FEDERAL 14-44-30HNB (REV-E.0) PWP

Start MD [ft]	End MD [ft]	Positional Uncertainty Model	Log Name/Comment	Wellbore
17.00	1600.00	BHI NaviTrak (Rotating)		STATE PRONGHORN FEDERAL 14-44-30HNB PWB
1600.00	11605.66	BHI AutoTrak Curve (Short)		STATE PRONGHORN FEDERAL 14-44-30HNB PWB





# Planned Wellpath Report

STATE PRONGHORN FEDERAL 14-44-30HNB (REV-E.0) PWP

Page 8 of 8



REFERENCE WELLPATH IDENTIFICATION			
Operator	BONANZA CREEK ENERGY	Slot	SLOT#05 STATE PRONGHORN FEDERAL 14-44-30HNB (2200'FSL & 617'FWL,SEC.30)
Area	COLORADO	Well	STATE PRONGHORN FEDERAL 14-44-30HNB
Field	WELD COUNTY (NAD83/TRUE)	Wellbore	STATE PRONGHORN FEDERAL 14-44-30HNB PWB
Facility	SEC.30-T05N-R61W		

DESIGN COMMENTS				
MD [ft]	Inclination [°]	Azimuth [°]	TVD [ft]	Comment
17.00	0.000	215.459	17.00	Tie On
1600.00	0.000	215.459	1600.00	End of Tangent
2969.56	27.391	215.459	2917.98	End of Build
5678.59	27.391	215.459	5323.29	End of Tangent
6742.25	90.000	87.690	6002.90	End of 3D Arc
11605.66	90.000	87.690	6002.90	End of Tangent