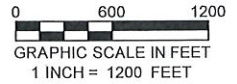
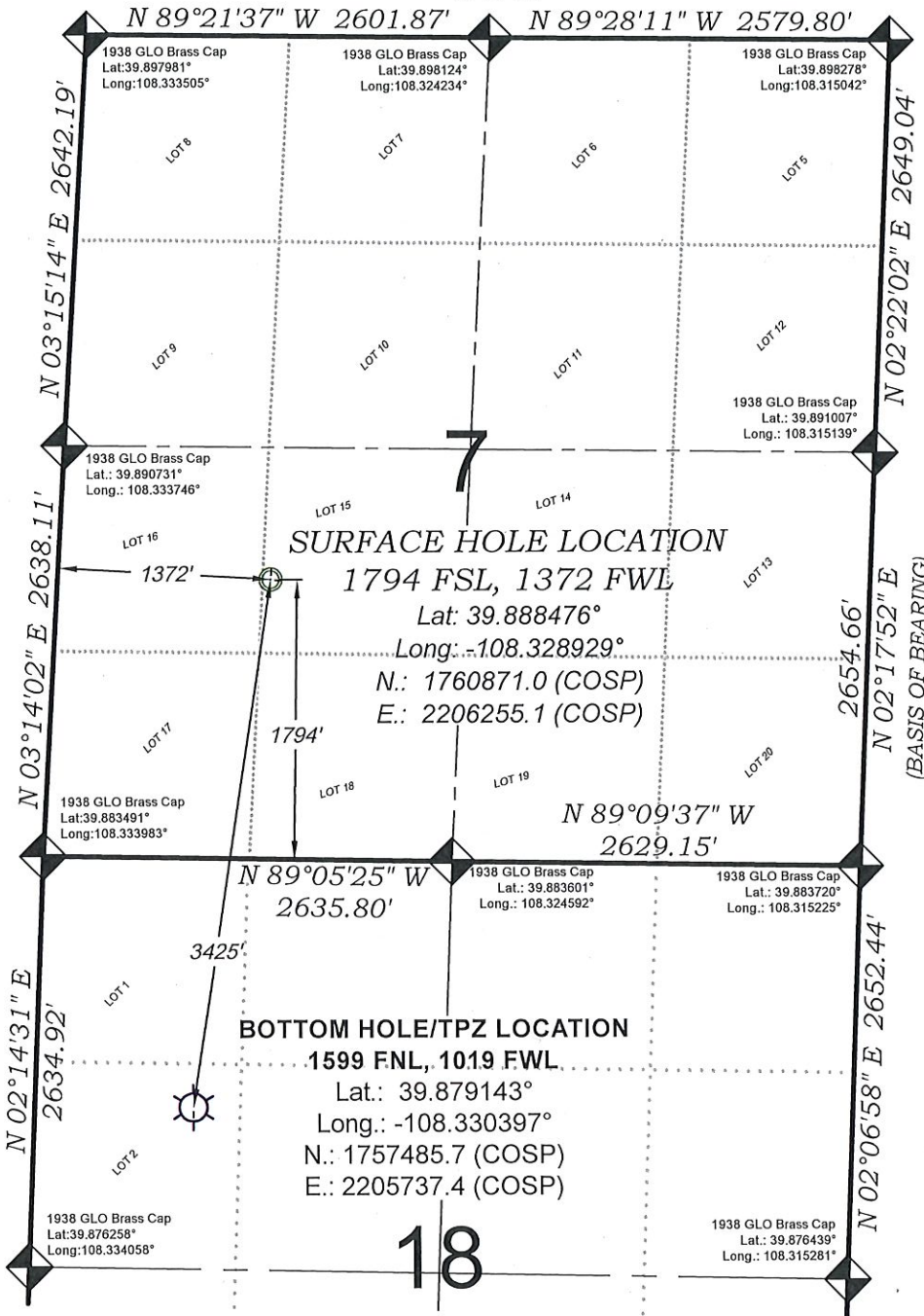


Federal RG 12-18-297

T. 2 S.



EXISTING GROUND ELEV.: 6603.0
PROPOSED PAD ELEV.: 6602.8

SEE LOCATION PLAT 6 FOR VISIBLE
IMPROVEMENTS WITHIN 500' OF
THIS LOCATION

- LEGEND -

FIELD LOCATED SECTION
MONUMENTS AS DESCRIBED

FIELD SURVEYED
WELL LOCATION

CALCULATED BOTTOM HOLE/TOP
OF PRODUCTION ZONE LOCATION

CALCULATED SECTION
CORNER LOCATION

NOTES

- 1) ELEVATIONS BASED ON N.A.V.D. 1988 PUBLISHED COORDINATES.
- 2) LATITUDES AND LONGITUDES ARE BASED ON NAD 83, PUBLISHED COORDINATES.
- 3) STATE PLANE COORDINATES ARE BASED ON COLORADO CENTRAL ZONE, U.S. SURVEY FEET.
- 4) ELEVATION MASK SET TO 15°
- 5) GPS OPERATOR J. KIRKPATRICK, OBSERVED A PDOP OF 2.6 FOR SURVEY POINT NUMBER 19463.
- 6) SURFACE AND BOTTOM HOLE LOCATIONS ARE MEASURED 90° FROM SECTION LINES.

REFERENCES

- 1) 1940 (GLO) & 1983 (BLM) Dependent ReSurvey T. 2 S., R. 97 W., 6th P.M.
- 2) U.S.G.S. QUAD: Rock School and Square S Ranch, CO

SURVEYORS STATEMENT

I, MICHAEL J. LANGHORNE, A REGISTERED LAND SURVEYOR IN THE STATE OF COLORADO DO HEREBY CERTIFY THAT THE SURVEY SHOWN HEREON WAS PREPARED UNDER MY DIRECT SUPERVISION AND HAS BEEN STAKED ON THE GROUND AS SHOWN ON THE PLAT AND CHECKING THAT THIS MAP IS A TRUE REPRESENTATION THEREOF.

MICHAEL J. LANGHORNE, COLORADO REGISTRATION NO. 36572
FOR AND ON BEHALF OF
BOOKCLIFF SURVEY SERVICES, INC.

REVISED: 8/31/20

SURVEY DATE: 8/23/19
MAP DATE: 9/04/19
SCALE: 1" = 1200'
PLAT: 1 of 8
PROJECT: TEP Valley

136 East Third Street
Rifle, Colorado
81650 Ph. (970)
625-2720 Fax (970)
625-2773

BOOKCLIFF
Survey Services, Inc.

WELL LOCATION PLAT Prepared for:

TERRA
ENERGY PARTNERS

TEP Rocky Mountain LLC

NE1/4 SW1/4, SECTION 7
T. 2 S., R. 97 W. of the 6th. P.M.
Rio BLANCO COUNTY, COLORADO