

SHL Detail	
No Scale	
10'	
11A-26°	21D-26
11B-26°	22A-26
11C-26°	22B-26
11D-26°	22C-26
21B-27°	22D-26
12B-26°	21C-27
21D-27°	23A-26
12D-26°	23B-26
13A-26°	23D-26
13B-26°	24A-26
14D-26°	24B-26
13D-26°	24C-26
14A-26°	24D-26
15A-26°	25A-26
15B-26°	25B-26

Caerus Oil & Gas LLC

BJU B26 496 PAD
NE 1/4 NW 1/4, SECTION 26, T4S, R96W, 6th P.M.
GARFIELD COUNTY, COLORADO

SURVEYED BY	DAYTON SLAUGH, K.H.	03-09-20	SCALE
DRAWN BY	T.L.L.	08-11-20	1" = 80'
MULTI-WELL PLAN		FIGURE #5	



UELS, LLC
Corporate Office * 85 South 200 East
Vernal, UT 84078 * (435) 789-1017



SHL Detail
No Scale
10'

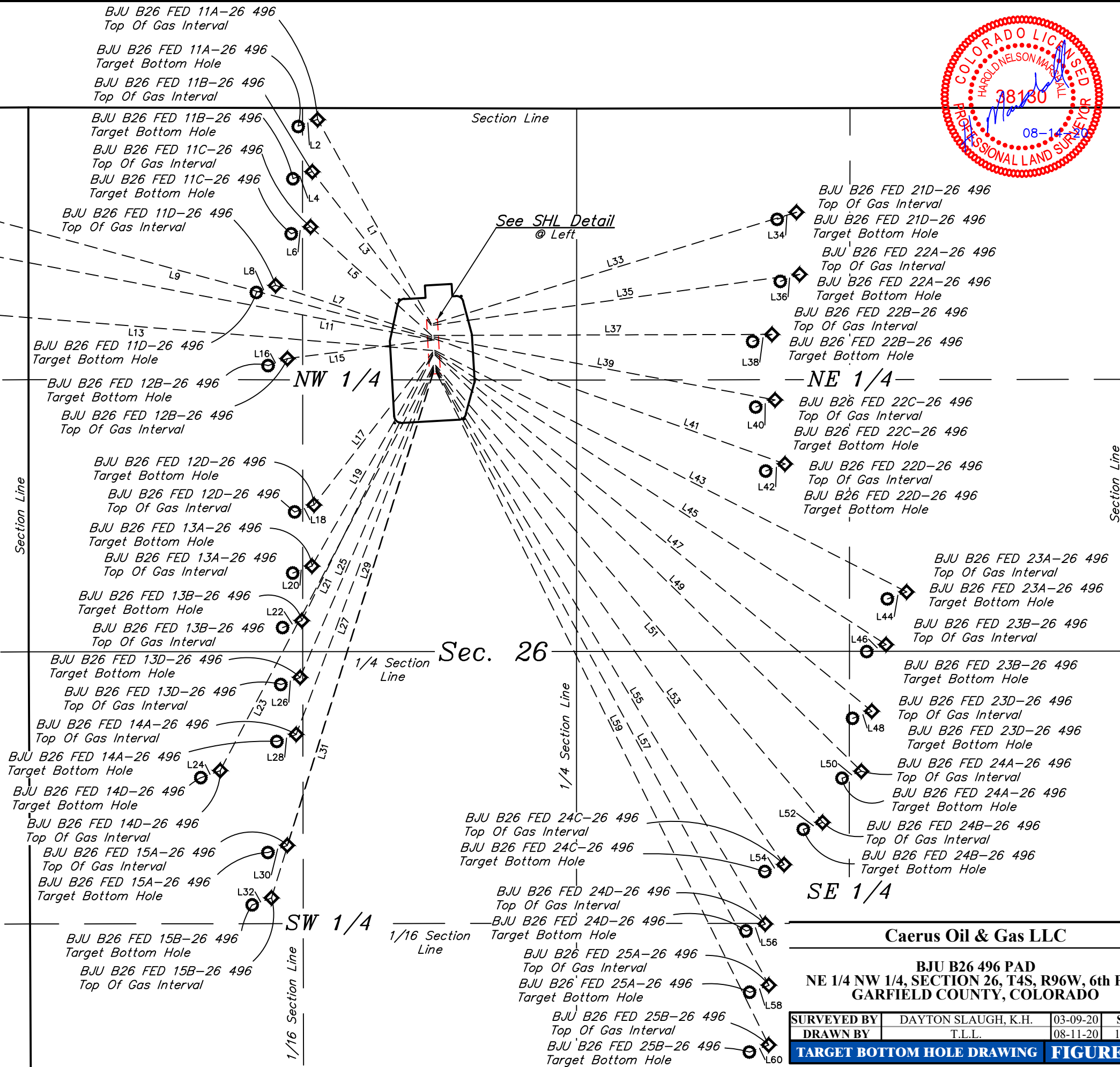
11A-26	21D-26
11B-26	22A-26
11C-26	22B-26
11D-26	22C-26
21B-27	22D-26
12B-26	21C-27
21D-27	23A-26
12D-26	23B-26
13A-26	23D-26
13B-26	24A-26
14D-26	24B-26
13D-26	24C-26
14A-26	24D-26
15A-26	25A-26
15B-26	25B-26

Sec. 27

LINE TABLE			LINE TABLE			LINE TABLE		
LINE	DIRECTION	LENGTH	LINE	DIRECTION	LENGTH	LINE	DIRECTION	LENGTH
L1	N29°04'08"W	1135.31'	L21	S26°16'41"W	1437.68'	L41	S70°20'32"E	1810.63'
L2	S71°02'29"W	100.34'	L22	S70°00'26"W	100.03'	L42	S70°00'26"W	100.03'
L3	N37°45'09"W	943.89'	L23	S27°46'13"W	2224.17'	L43	S62°54'31"E	2575.25'
L4	S69°59'15"W	99.93'	L24	S69°57'12"W	100.06'	L44	S70°00'26"W	100.03'
L5	N48°04'56"W	791.69'	L25	S23°15'54"W	1641.58'	L45	S57°02'30"E	2612.55'
L6	S69°57'12"W	100.06'	L26	S70°00'26"W	100.03'	L46	S70°00'26"W	100.03'
L7	N71°40'10"W	799.36'	L27	S20°35'45"W	1898.65'	L47	S50°41'42"E	2743.40'
L8	S70°00'26"W	100.03'	L28	S70°00'26"W	100.03'	L48	S70°00'26"W	100.03'
L9	N74°53'01"W	3337.69'	L29	S17°07'48"W	2416.29'	L49	S45°41'55"E	2894.19'
L10	S70°00'26"W	100.03'	L30	S70°00'26"W	100.03'	L50	S70°00'26"W	100.03'
L11	N79°11'16"W	3477.23'	L31	S17°08'38"W	2675.27'	L51	S40°16'00"E	2909.13'
L12	S70°00'26"W	100.03'	L32	S69°57'12"W	100.06'	L52	S70°00'26"W	100.03'
L13	N85°21'09"W	2654.73'	L33	N72°57'04"E	1845.92'	L53	S35°00'07"E	2951.17'
L14	S69°59'15"W	99.93'	L34	S69°57'12"W	100.06'	L54	S70°00'26"W	100.03'
L15	S82°46'25"W	708.33'	L35	N82°05'45"E	1796.87'	L55	S30°40'35"E	3137.67'
L16	S69°59'15"W	99.93'	L36	S69°59'15"W	99.93'	L56	S69°59'15"W	99.93'
L17	S37°50'29"W	940.22'	L37	N89°49'07"E	1642.31'	L57	S28°26'07"E	3398.62'
L18	S69°59'15"W	99.93'	L38	S69°59'15"W	99.93'	L58	S70°00'26"W	100.03'
L19	S29°37'09"W	1186.89'	L39	S79°32'47"E	1684.87'	L59	S26°17'49"E	3649.03'
L20	S70°00'26"W	100.03'	L40	S70°00'26"W	100.03'	L60	S70°00'26"W	100.03'



UELS, LLC
Corporate Office * 85 South 200 East
Vernal, UT 84078 * (435) 789-1017



Caerus Oil & Gas LLC

BJU B26 496 PAD
NE 1/4 NW 1/4, SECTION 26, T4S, R96W, 6th P.M.
GARFIELD COUNTY, COLORADO

SURVEYED BY	DAYTON SLAUGH, K.H.	03-09-20	SCALE
DRAWN BY	T.L.L.	08-11-20	1" = 500'
TARGET BOTTOM HOLE DRAWING		FIGURE #5A	