

Sonic Cement Bond Log

API No.

05-075-06445-00

Company EXCELL SERVICES LLC

Well MOUNT HOPE #9

Field MOUNT HOPE

County LOGAN State COLORADO

Location

Sec: 19 Twp: 9N Rge: 53W

Other Services

Elevation

Permanent Datum GROUND LEVEL Elevation
Log Measured From KELLY BUSHING 5' Ft. Above Perm. Datum
Drilling Measured From KELLY BUSHING

K.B.
D.F.
G.L.

Run Number ONE

Date Survey 02/13/2020

Date Cementing ///

Type Cementing Operation PRIMARY

Depth Driller 5020

Depth Logger 4750'

Logged Interval 4748' to 00'

Casing Driller 8 5/8" @ 202' @

Float Collar -- D.V. Tool ///

Squeeze Depth ///

Amount & Type Cement ///

Amount & Type Admix ///

Type Fluid In Hole WATER

Fluid Level FULL

Salinity PPM CL ///

Weight lb/gal -- Vis. ///

Approx. Logged Cement Top 4400'

Calculated Cement Top ///

Max. Hole Temperature 123 DEG F

Tool No. CBL 1

Spacing Recorded 3-5'

Equipment -- Location 900 Hays

Recorded By D.WALKER

Witnessed By CAL

<<< Fold Here >>>

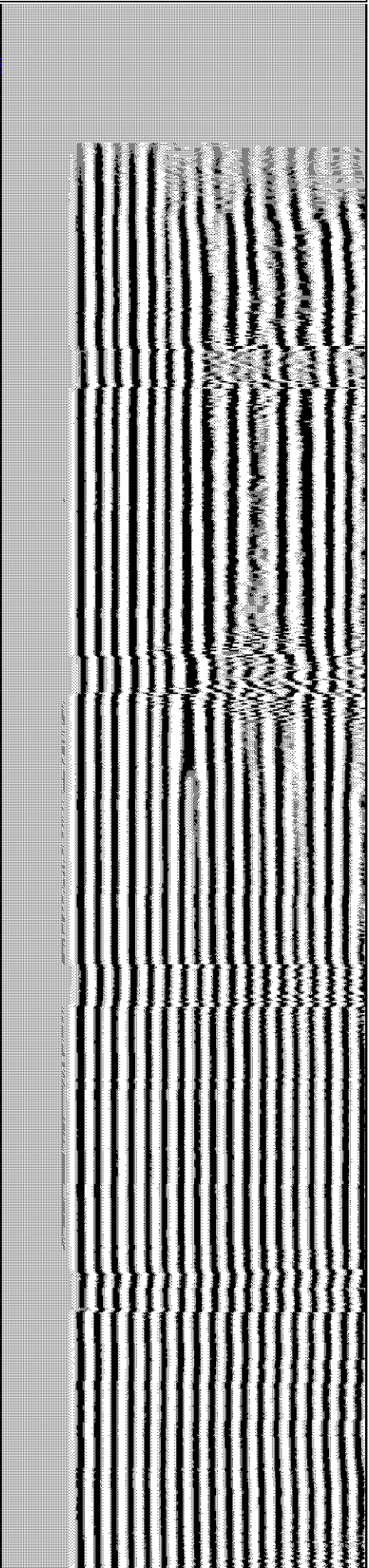
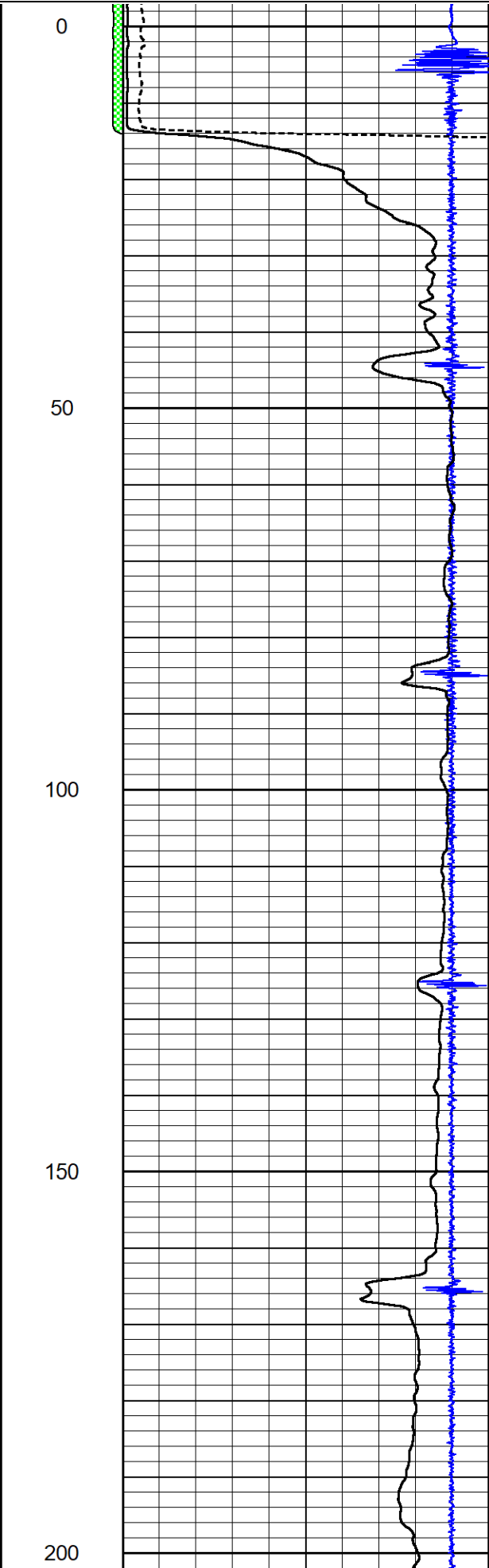
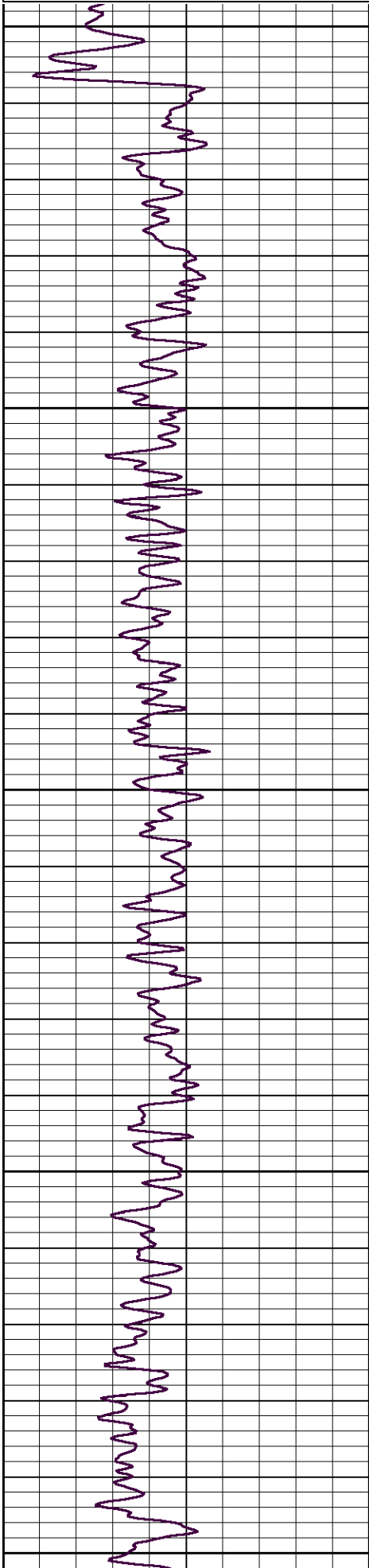
All interpretations are opinions based on inferences from electrical or other measurements and we cannot and do not guarantee the accuracy or correctness of any interpretation, and we shall not, except in the case of gross or willful negligence on our part, be liable or responsible for any loss, costs, damages, or expenses incurred or sustained by anyone resulting from any interpretation made by any of our officers, agents or employees. These interpretations are also subject to our general terms and conditions set out in our current Price Schedule.

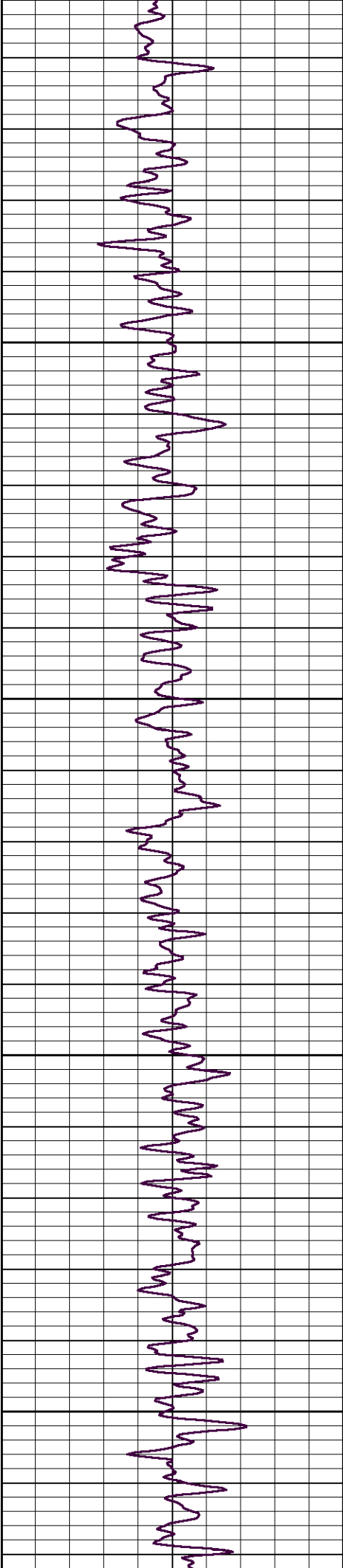
Comments

Thank you for using Log-Tech

Database File excell_mount_hope4_grcbl.db
Dataset Pathname pass5
Presentation Format log-tech
Dataset Creation Thu Feb 13 16:02:56 2020
Charted by Depth in Feet scaled 1:240

0	Gamma Ray (GAPI)	150	amp3ft	1.3	CCL	-0.15	200	Variable Density (usec)	1200
0	LTEN (lb)	2000	(mV)		Amplitude				
			-100 10		Amplified Amplitude (mV)				



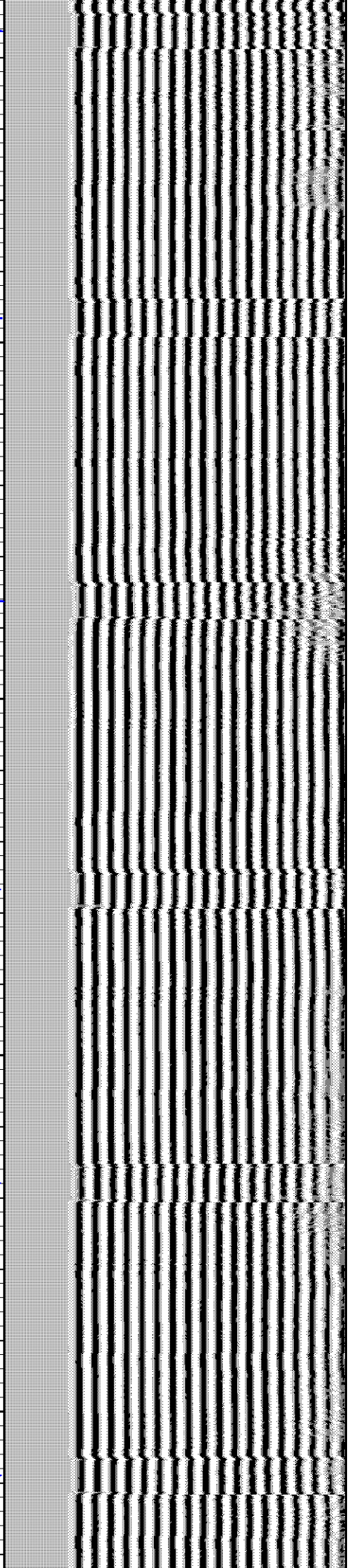
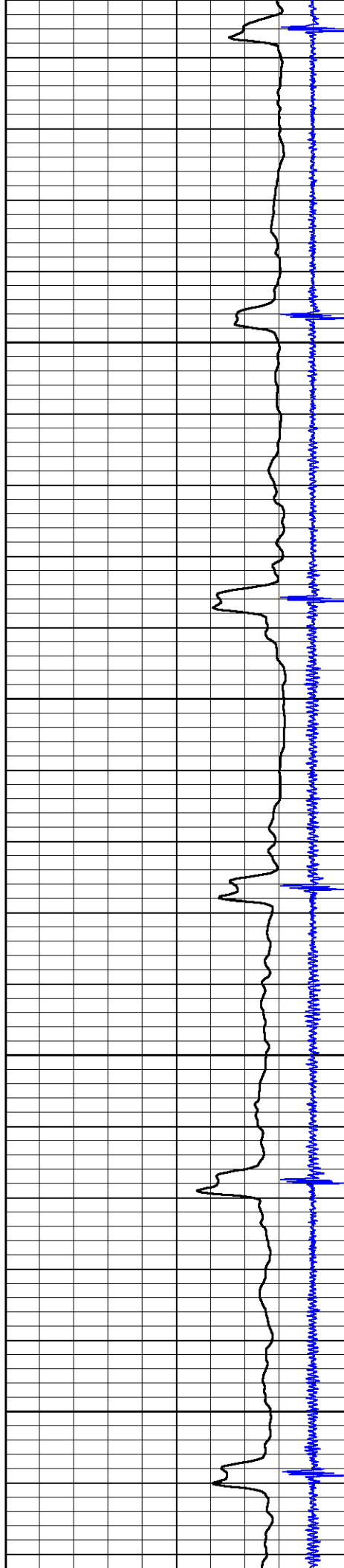


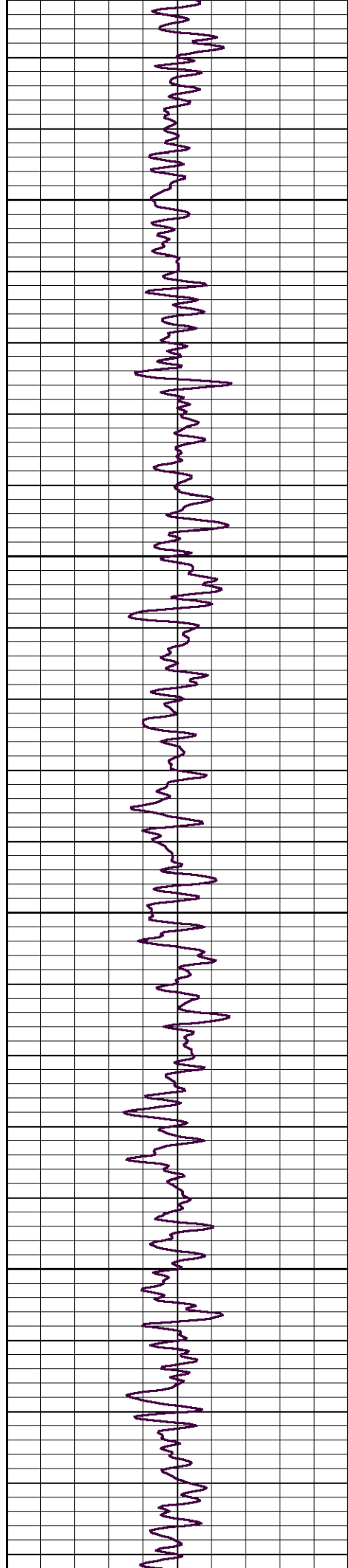
250

300

350

400



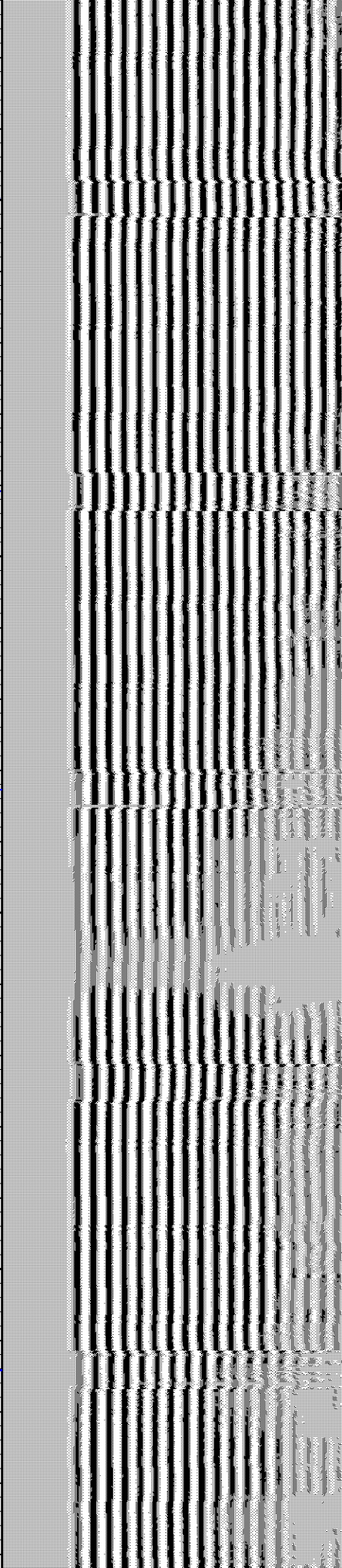
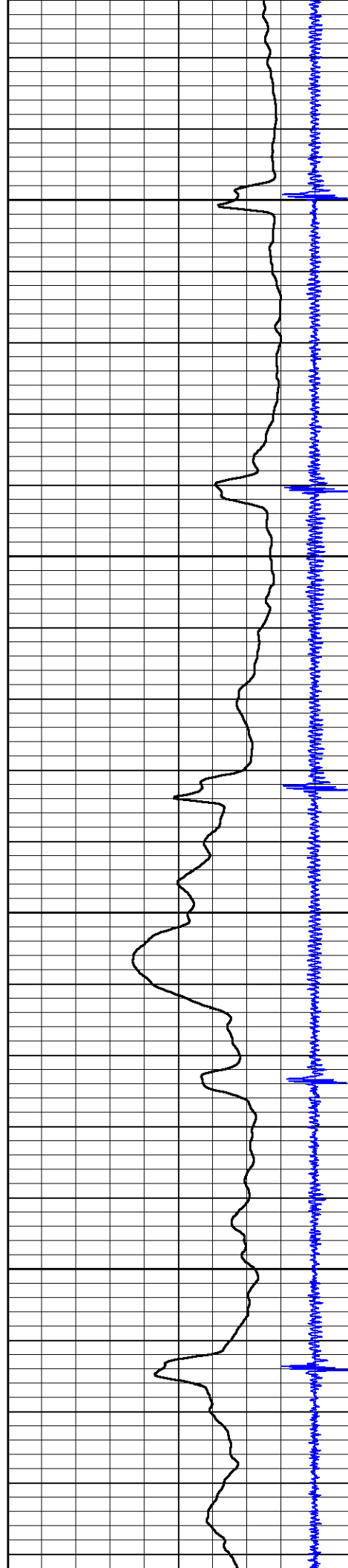


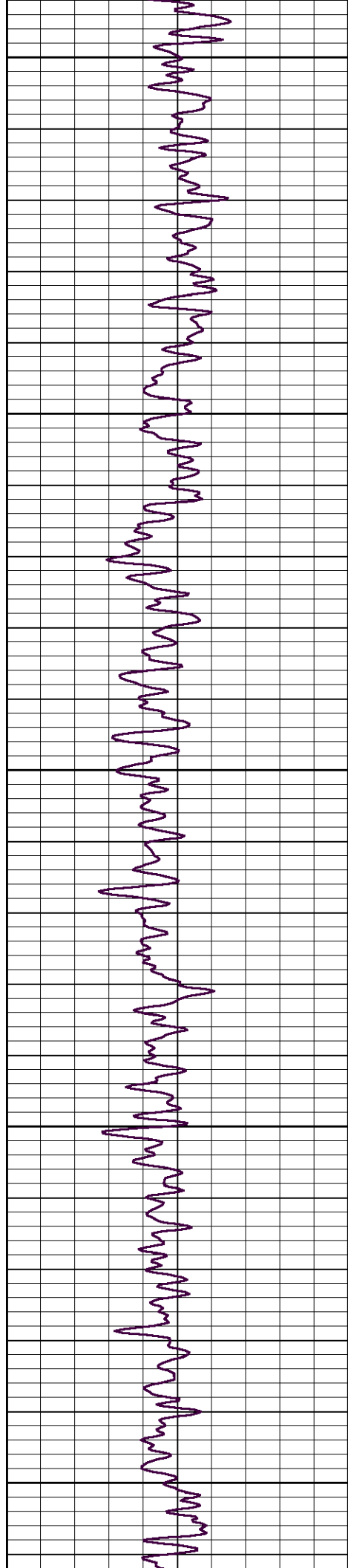
450

500

550

600





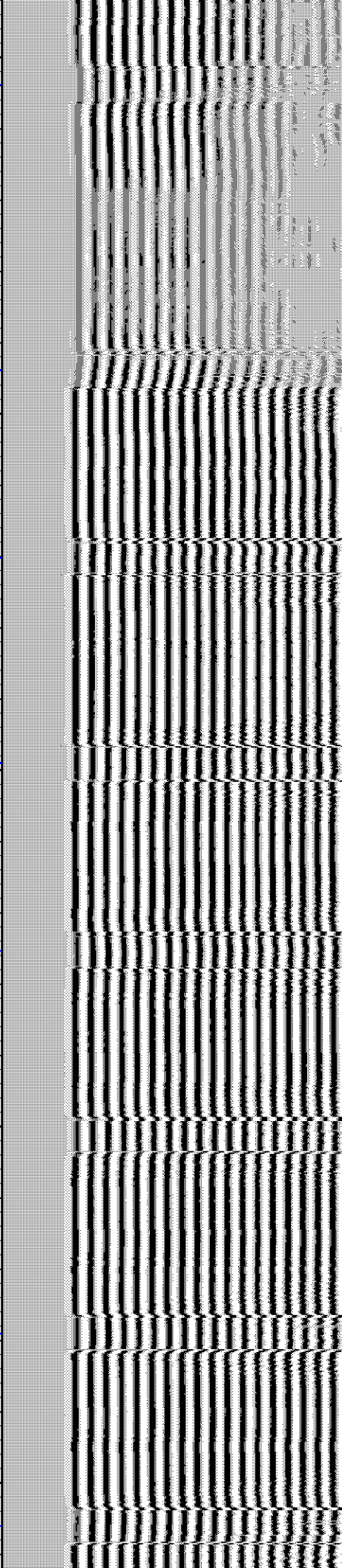
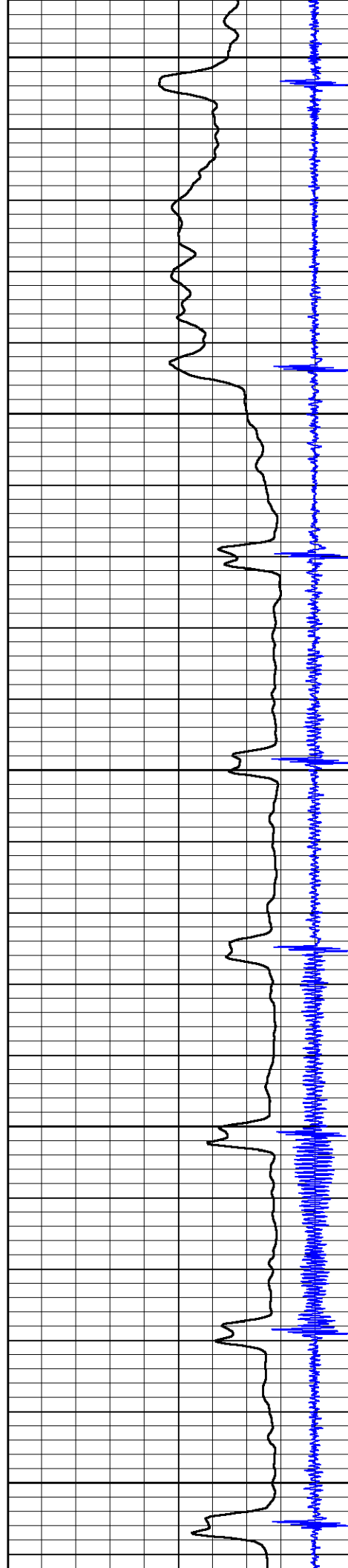
650

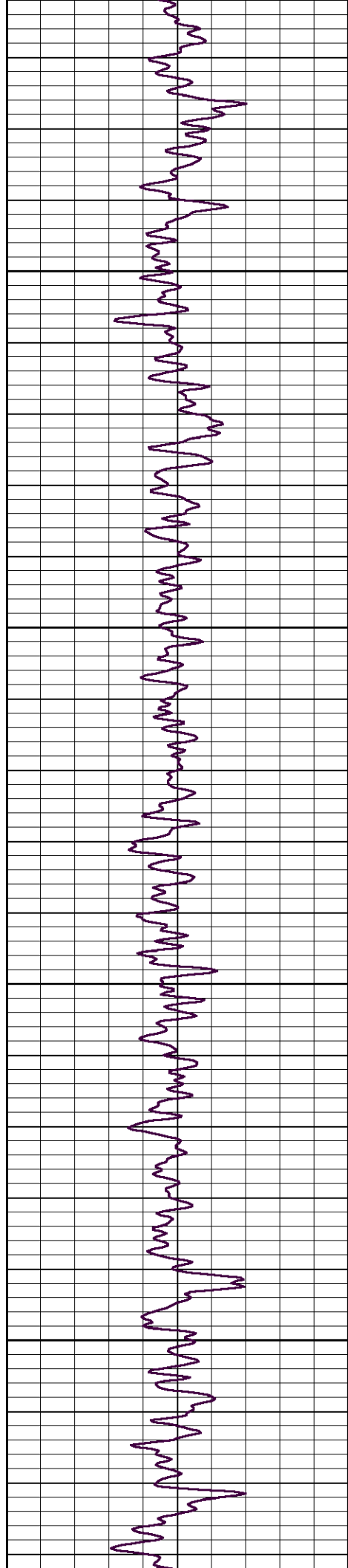
700

750

800

850



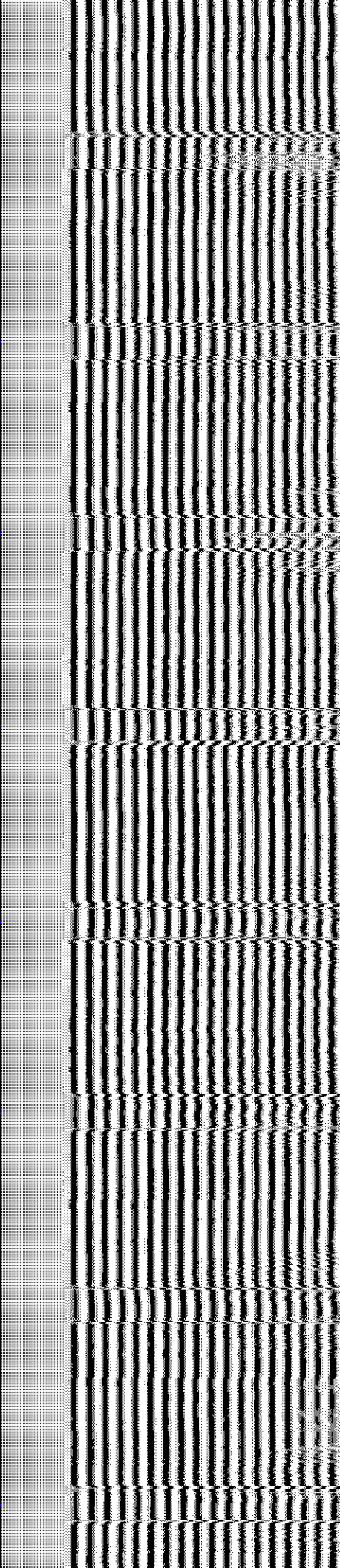
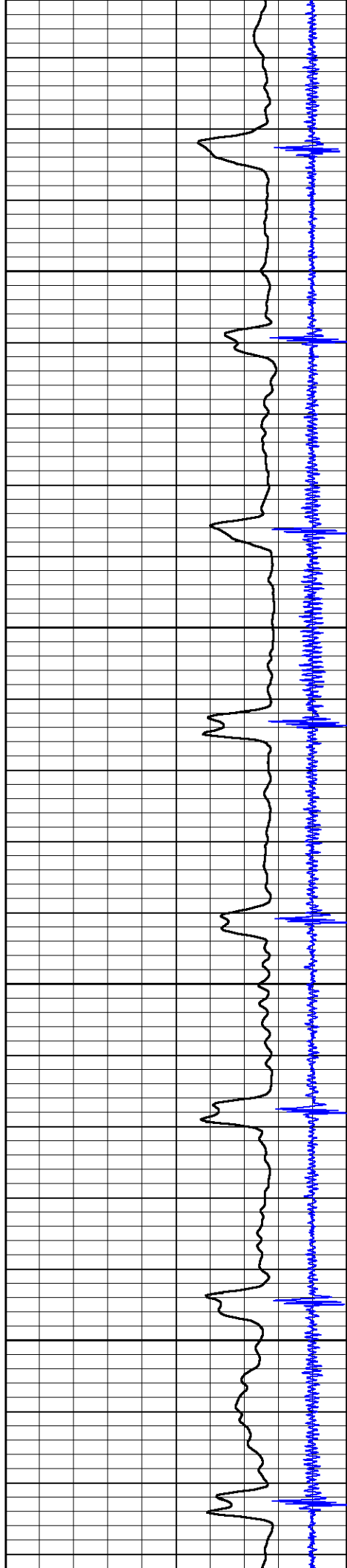


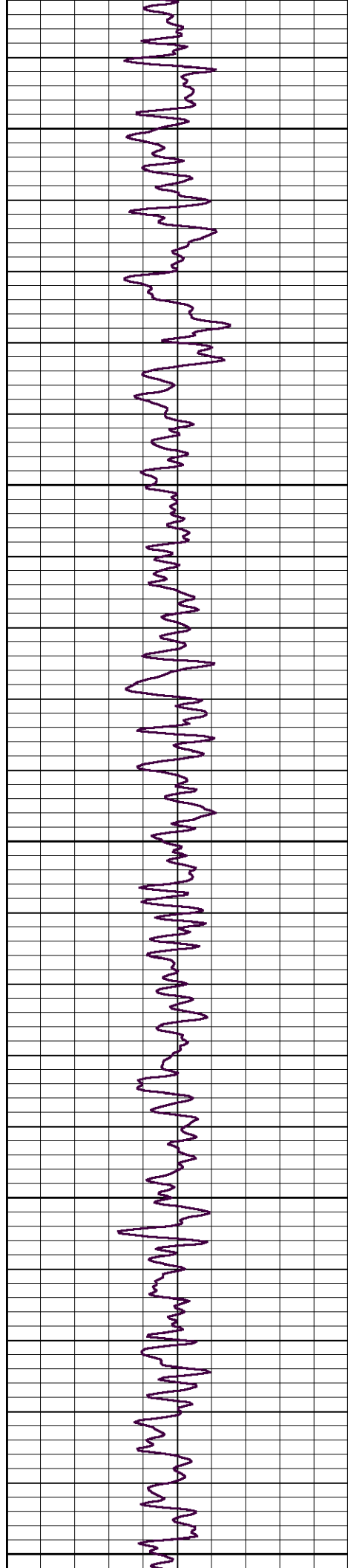
900

950

1000

1050





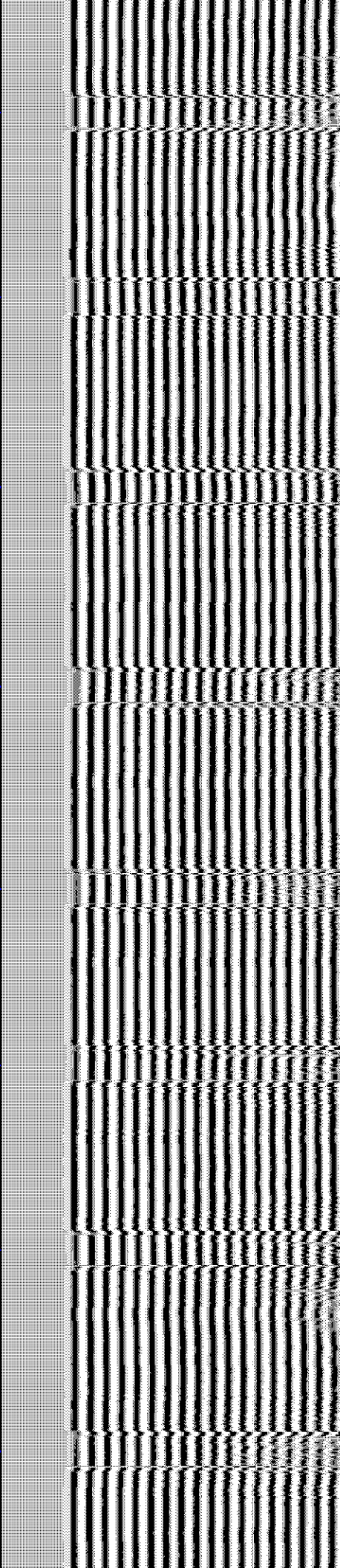
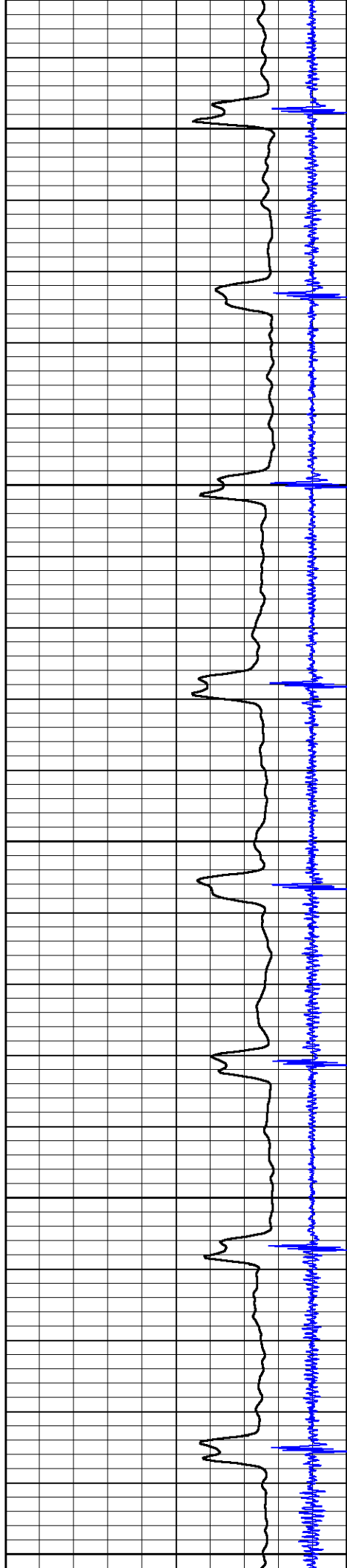
1100

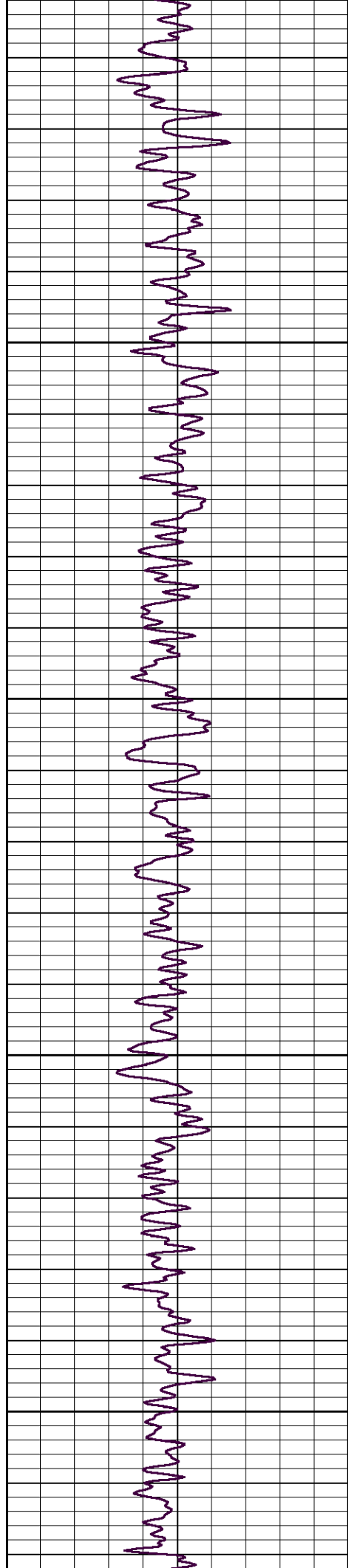
1150

1200

1250

1300



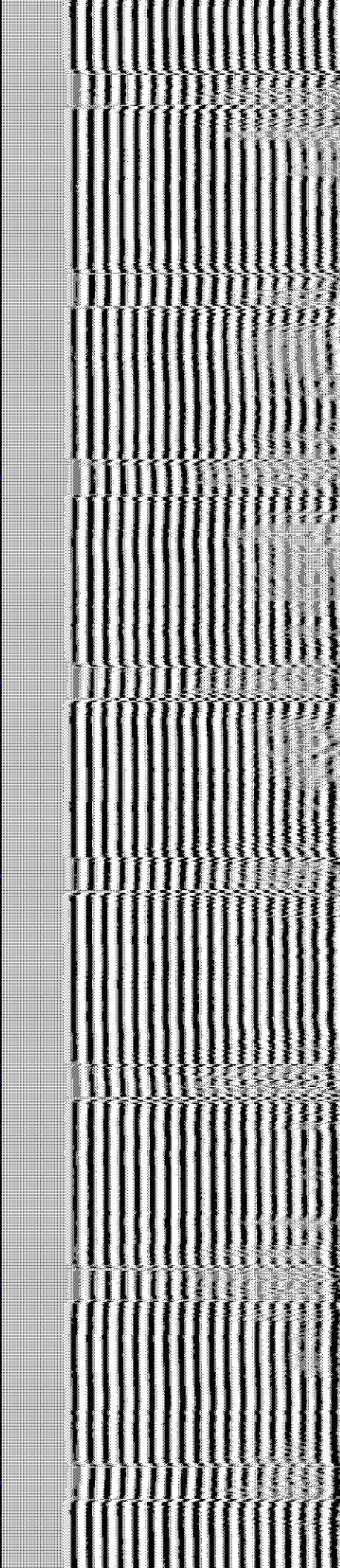
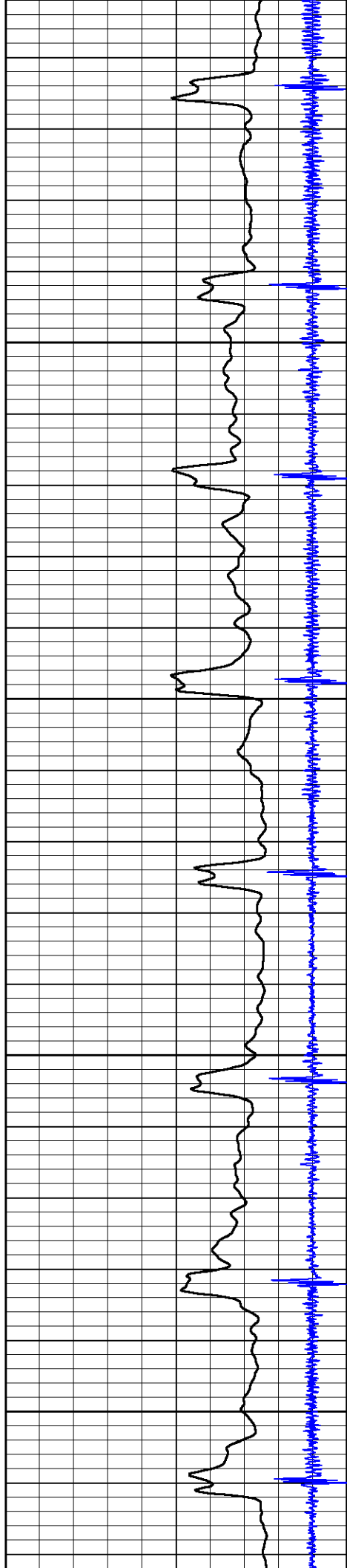


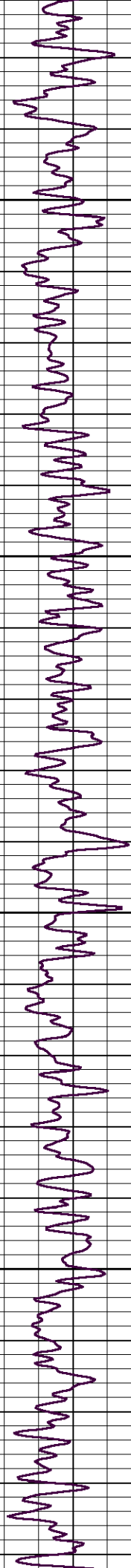
1350

1400

1450

1500



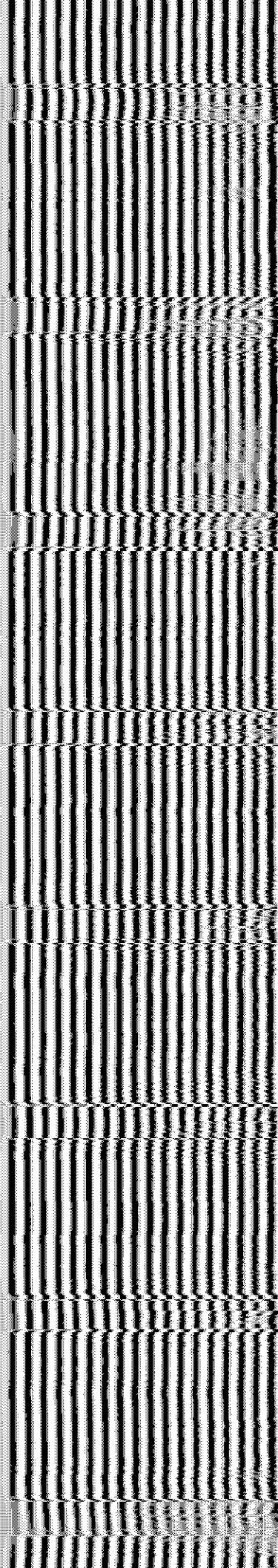
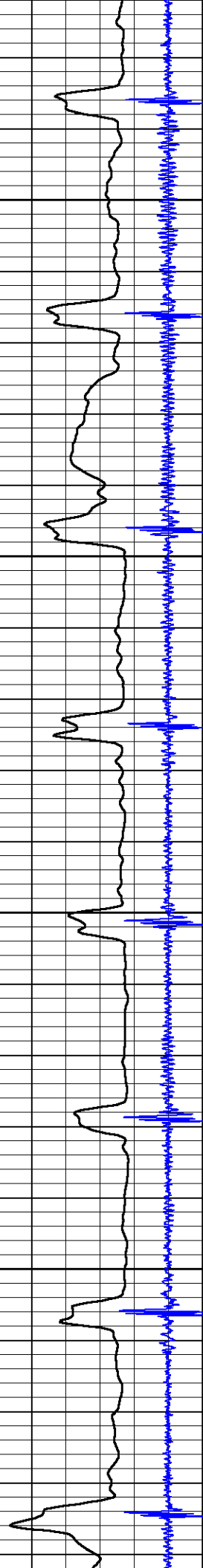


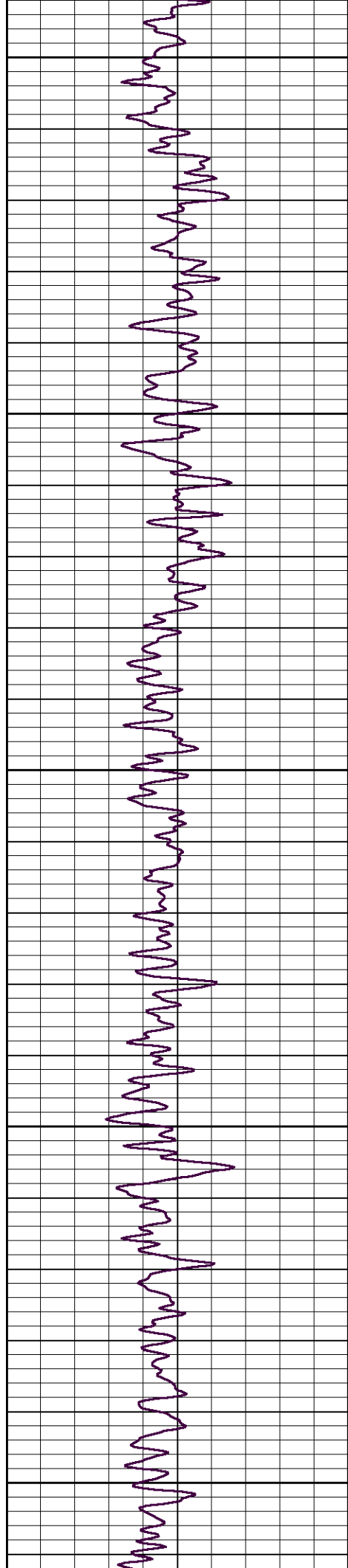
1550

1600

1650

1700





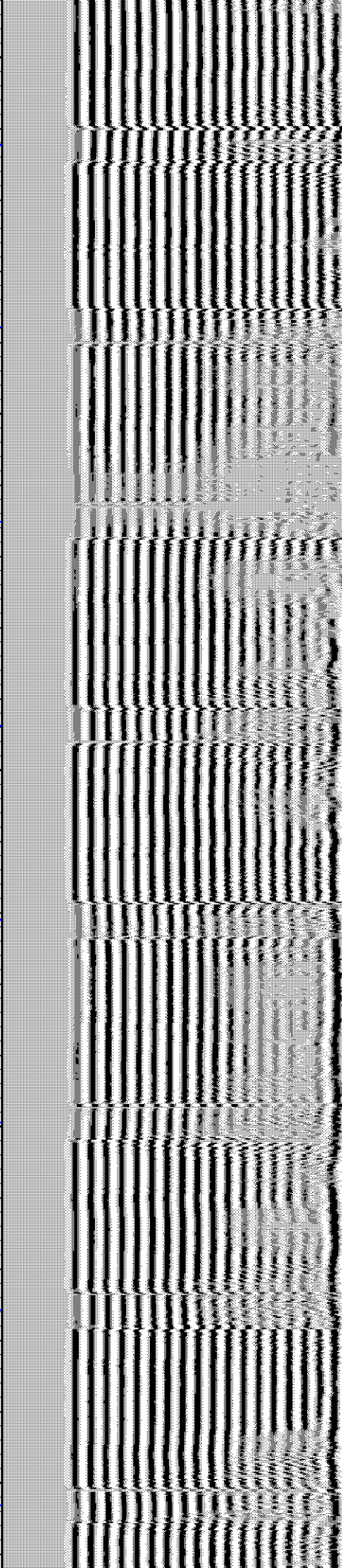
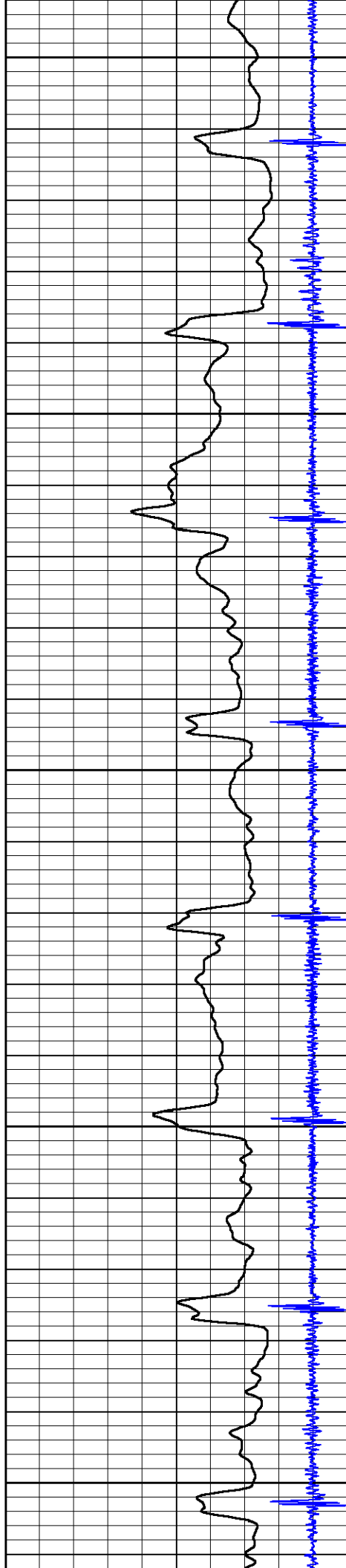
1750

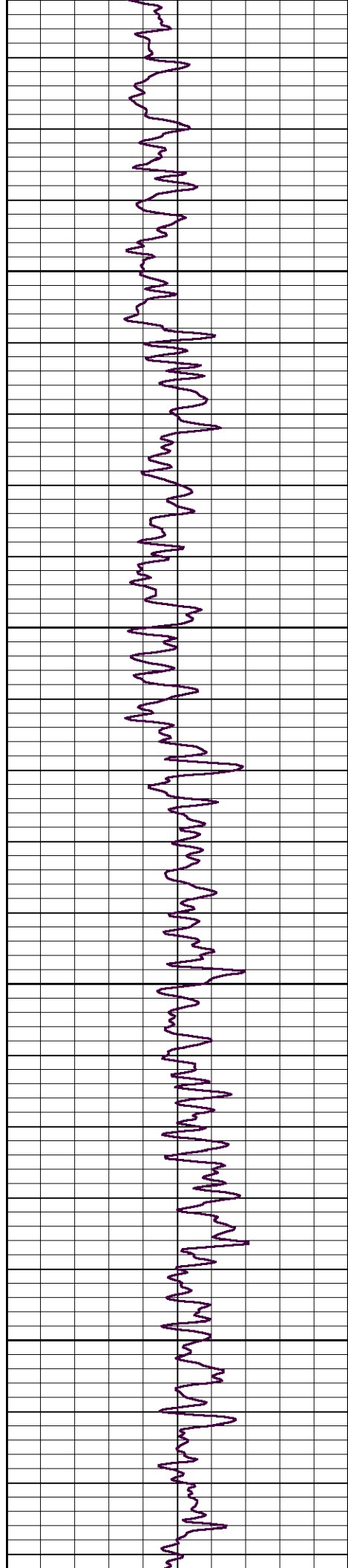
1800

1850

1900

1950



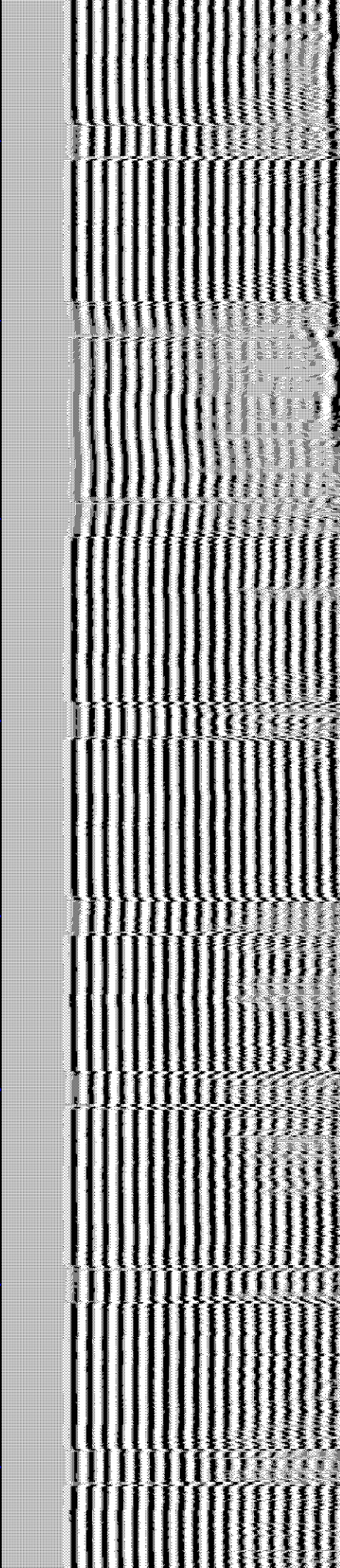
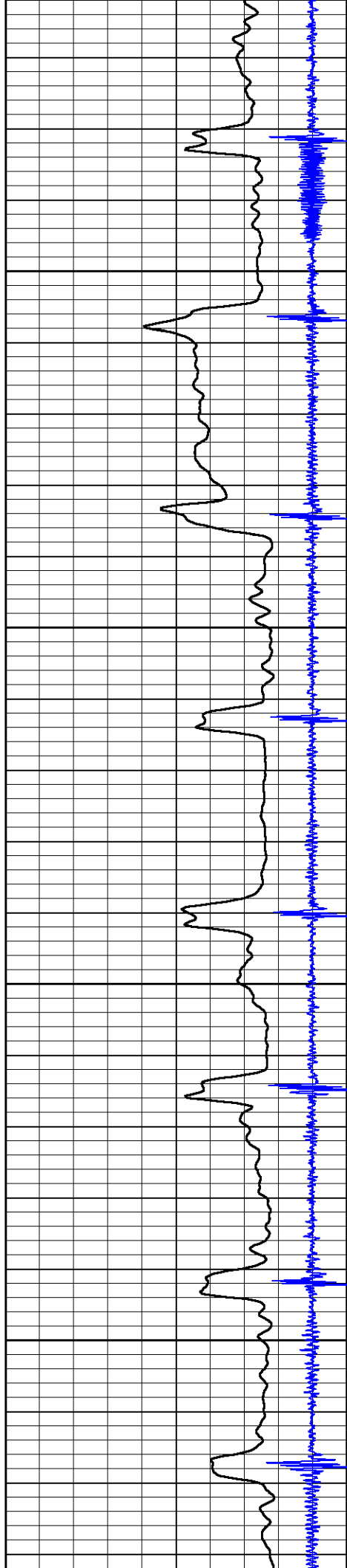


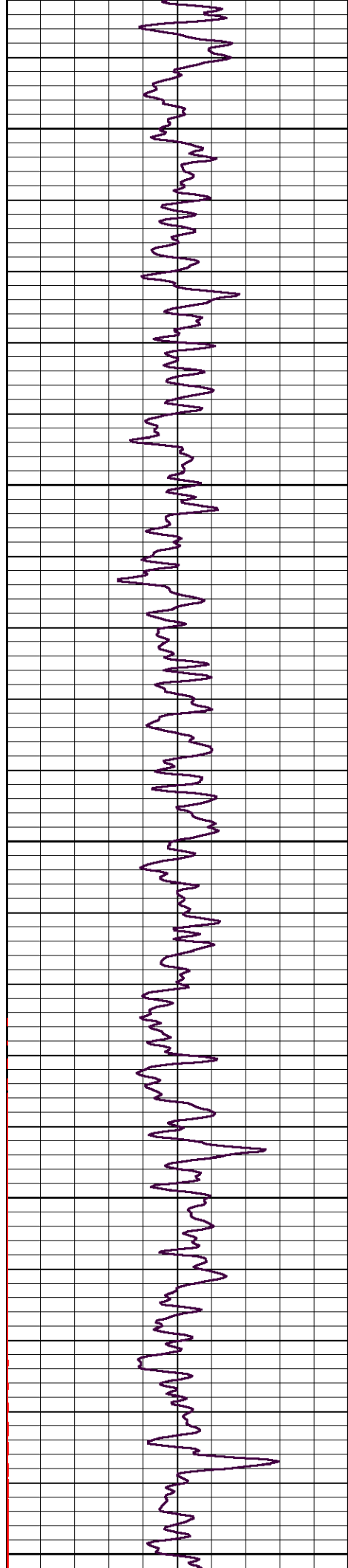
2000

2050

2100

2150





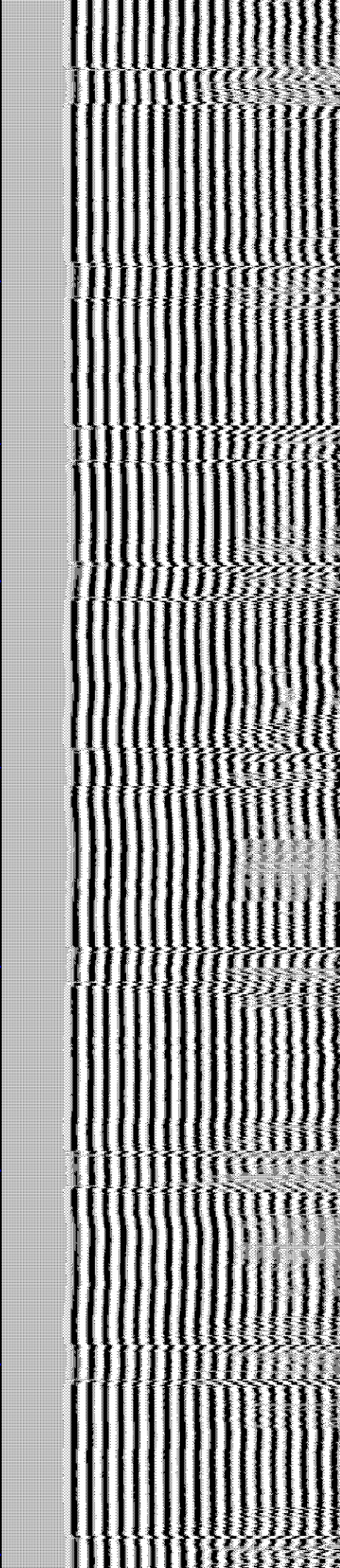
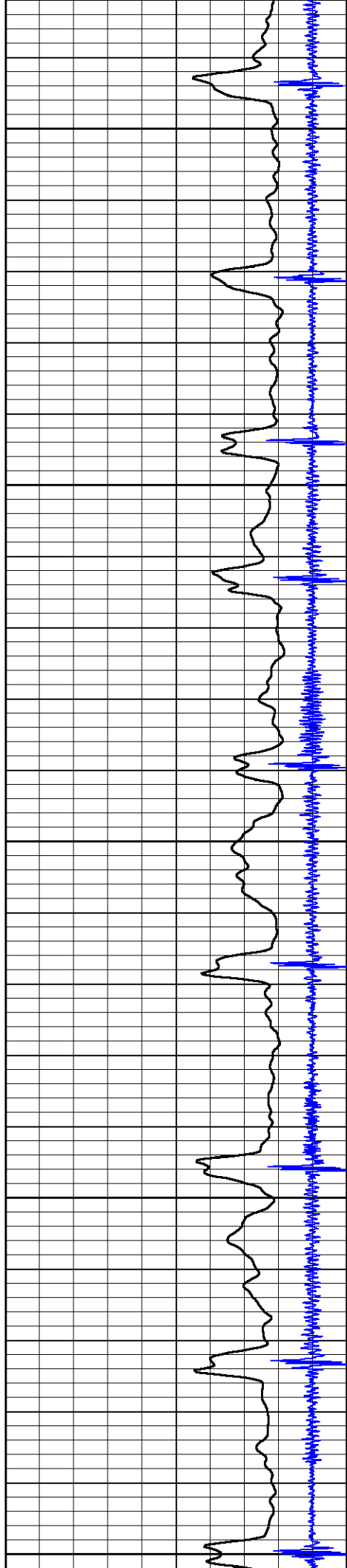
2200

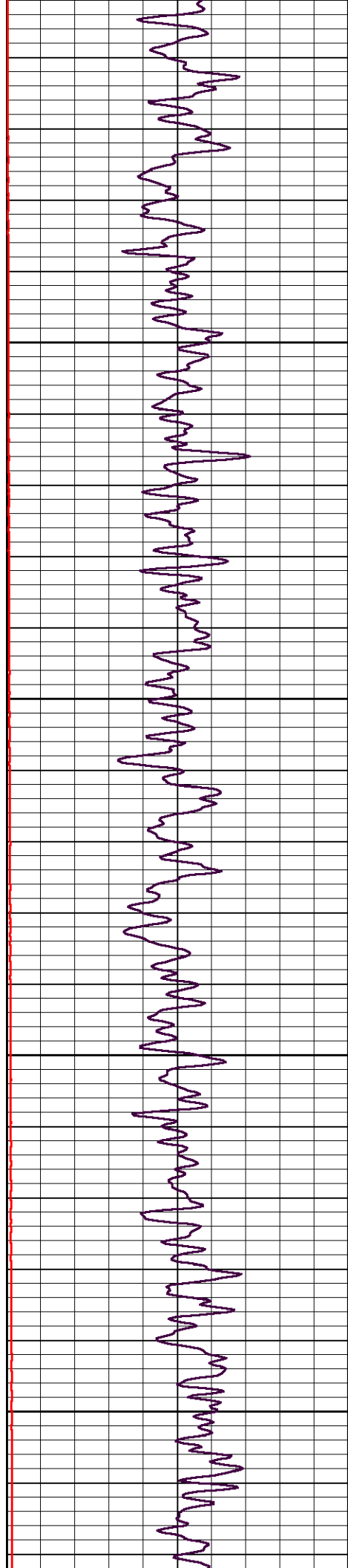
2250

2300

2350

2400



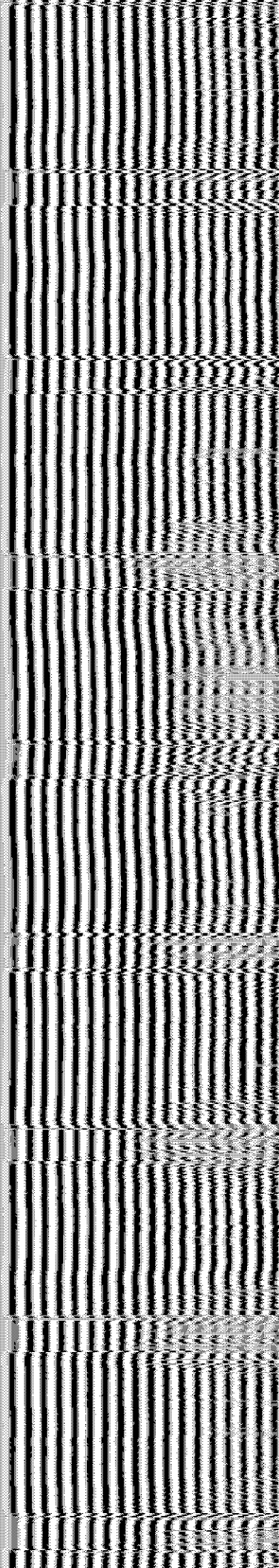
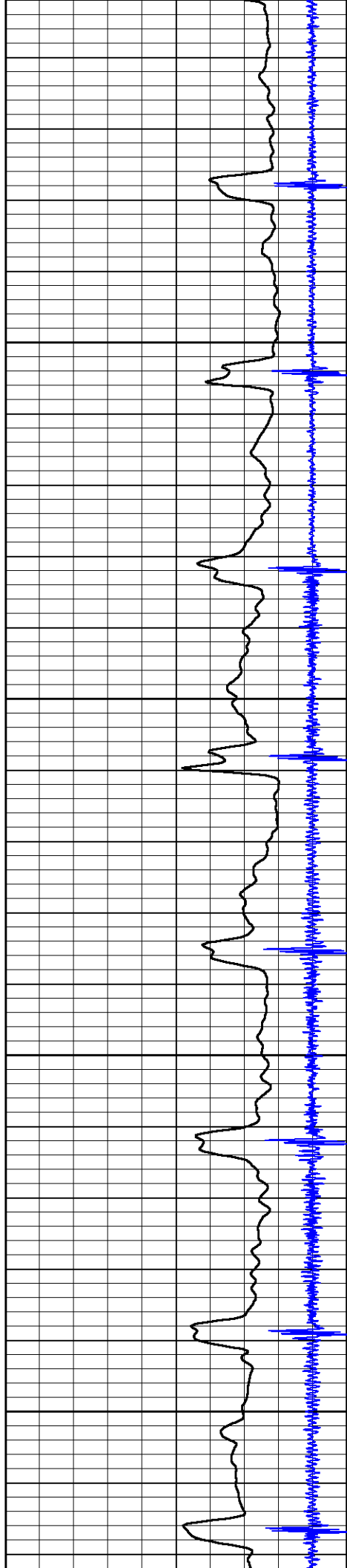


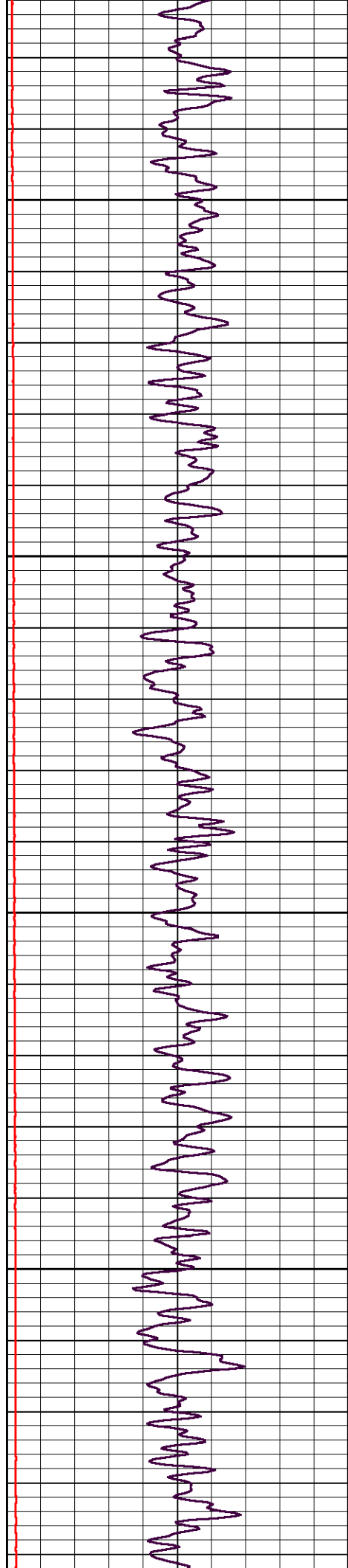
2450

2500

2550

2600



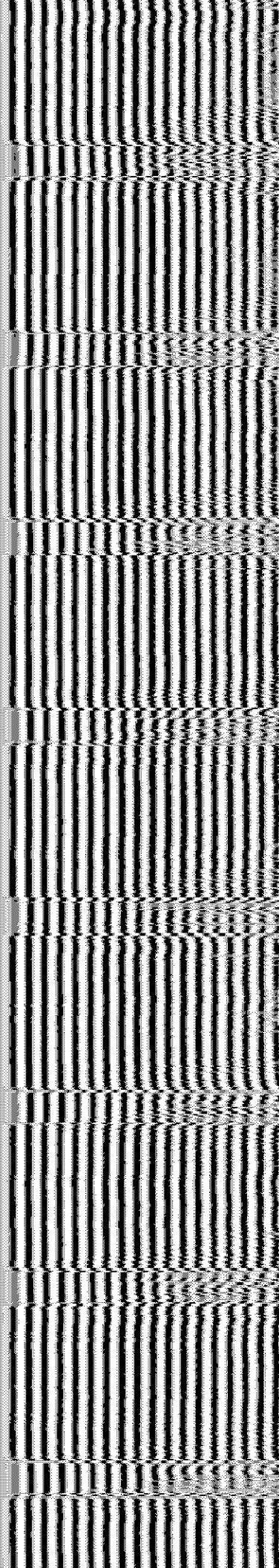
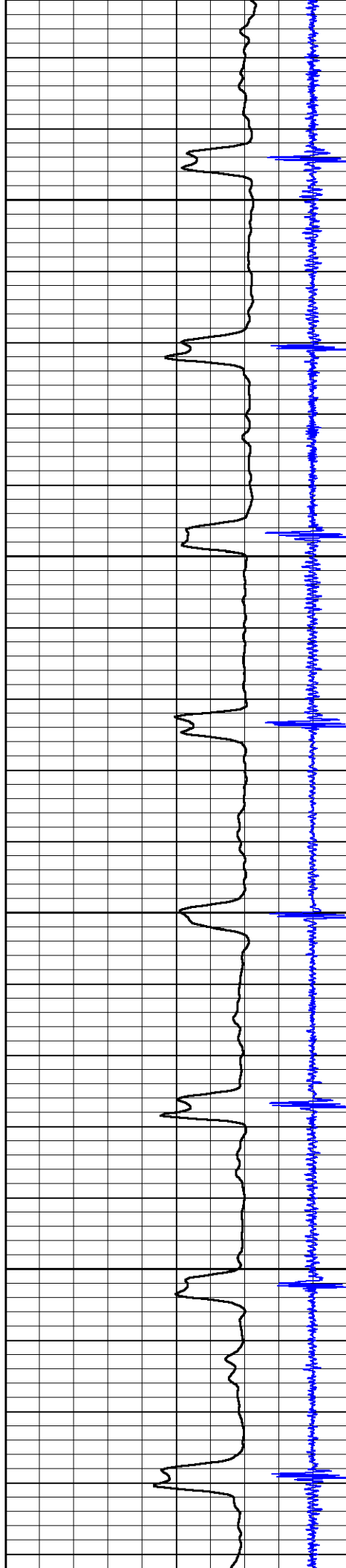


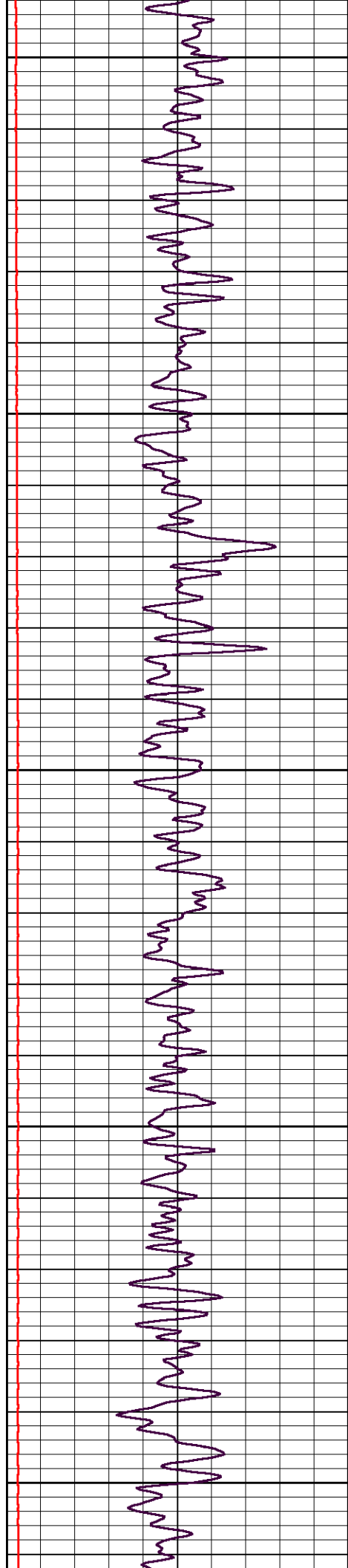
2650

2700

2750

2800





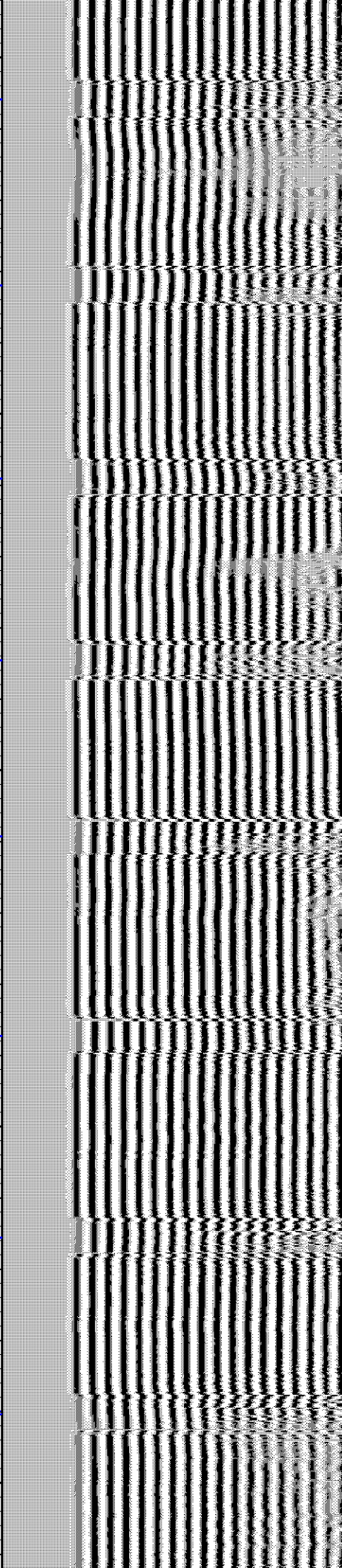
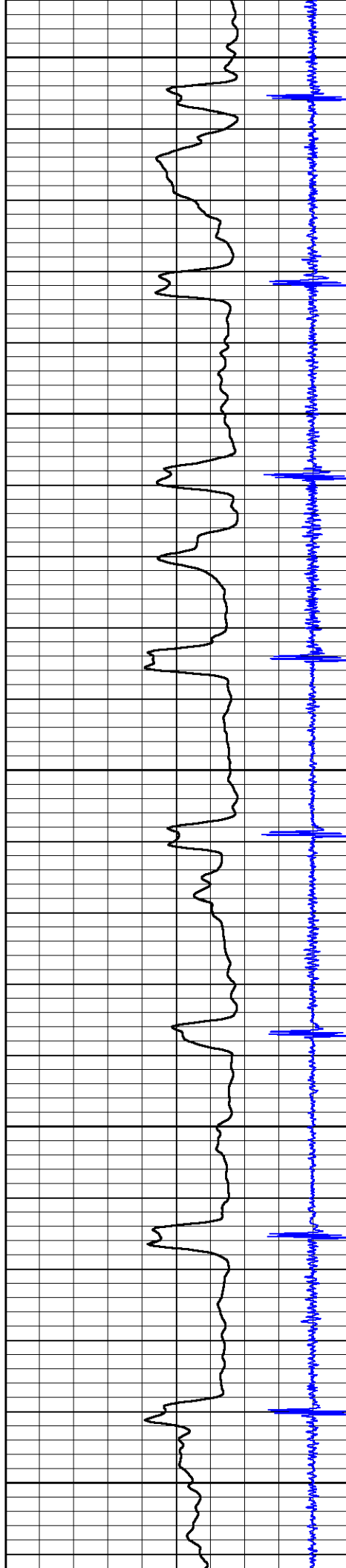
2850

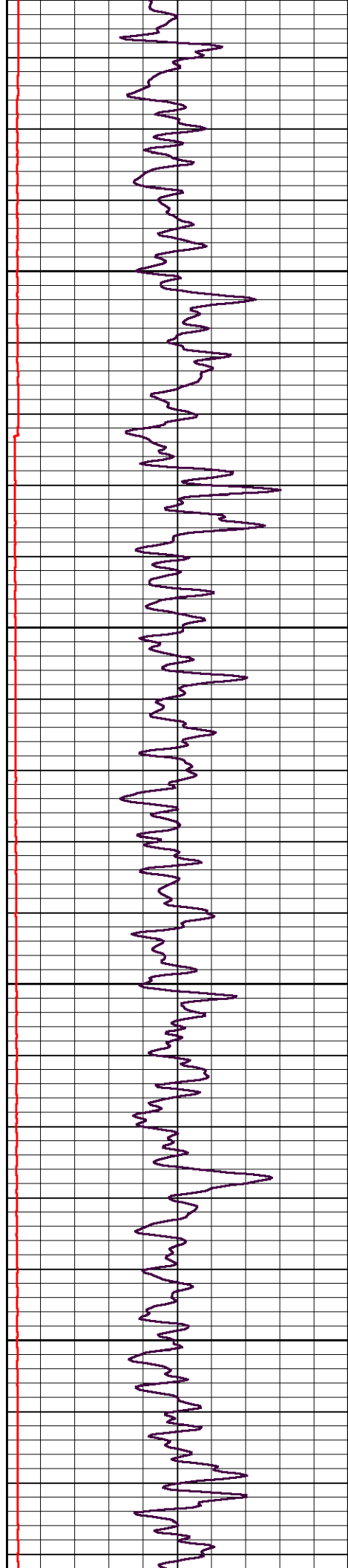
2900

2950

3000

3050



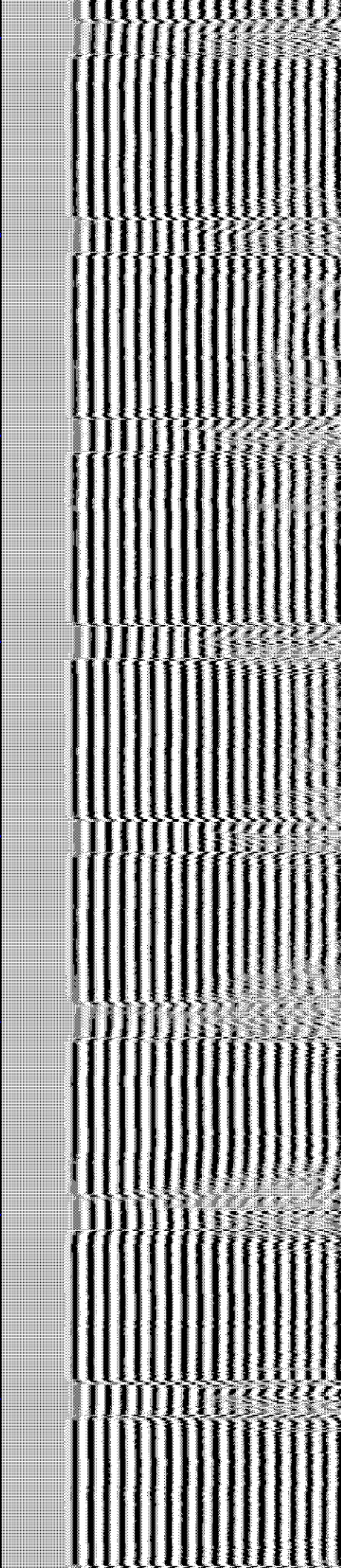
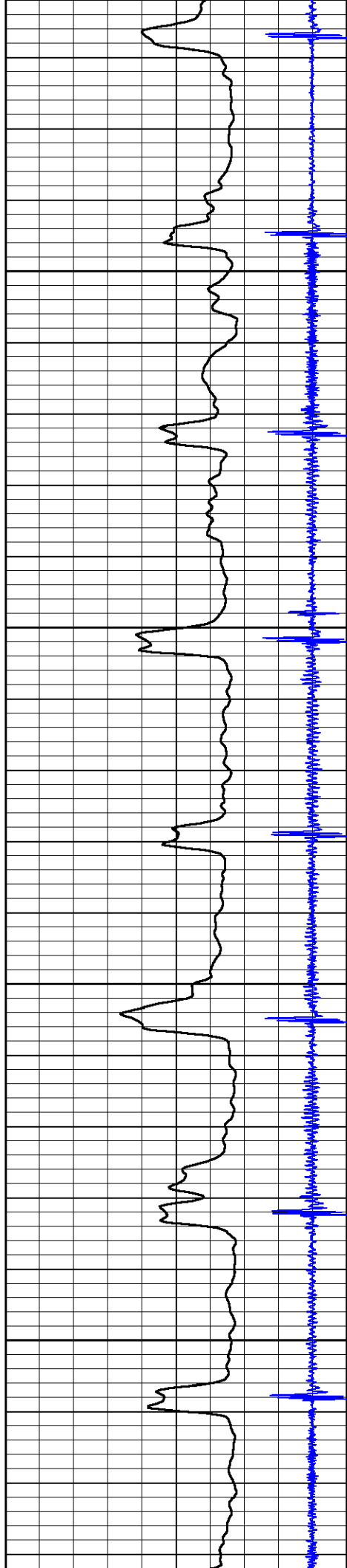


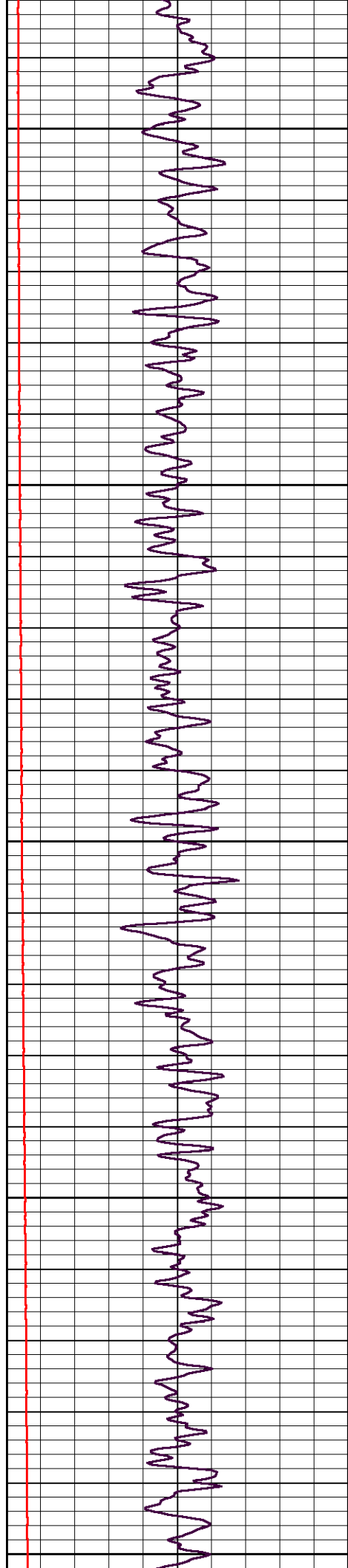
3100

3150

3200

3250





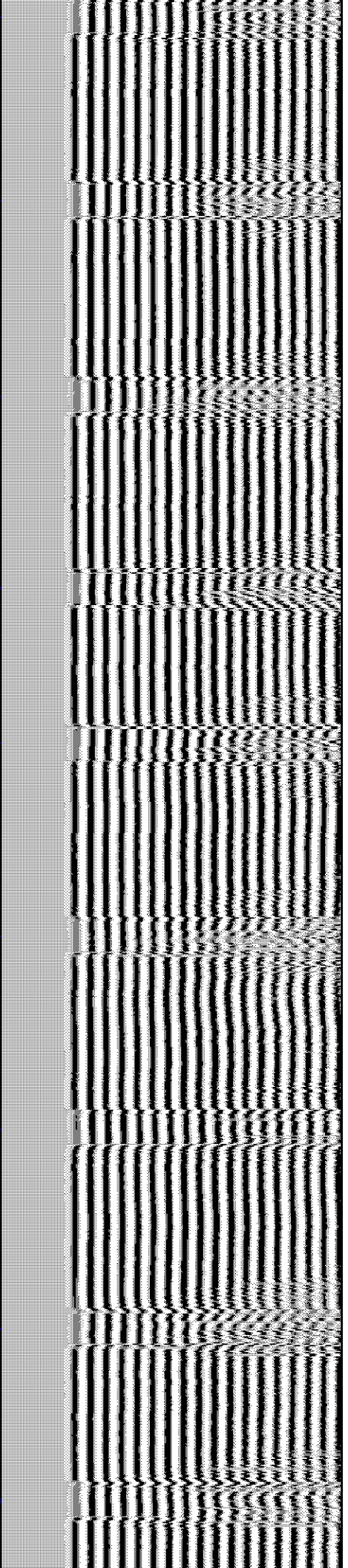
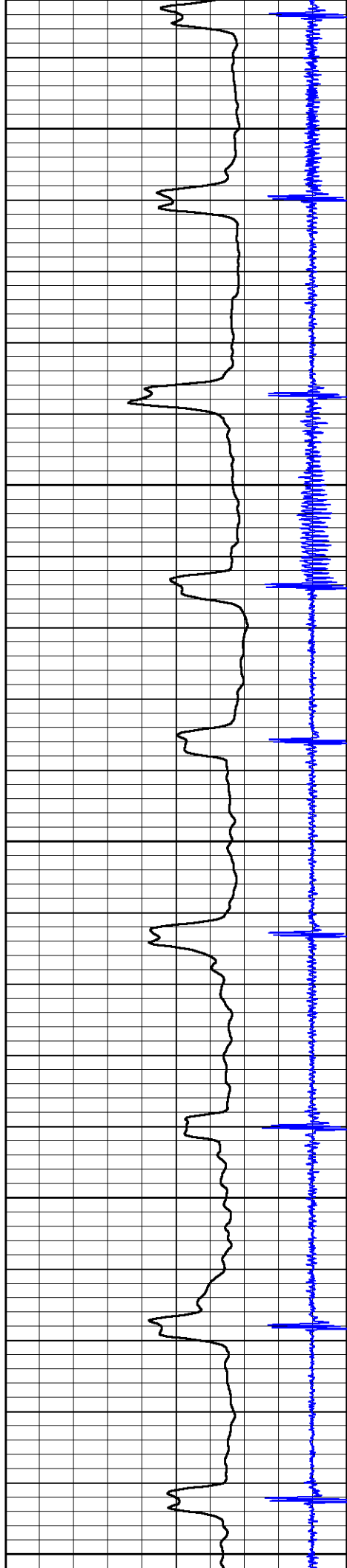
3300

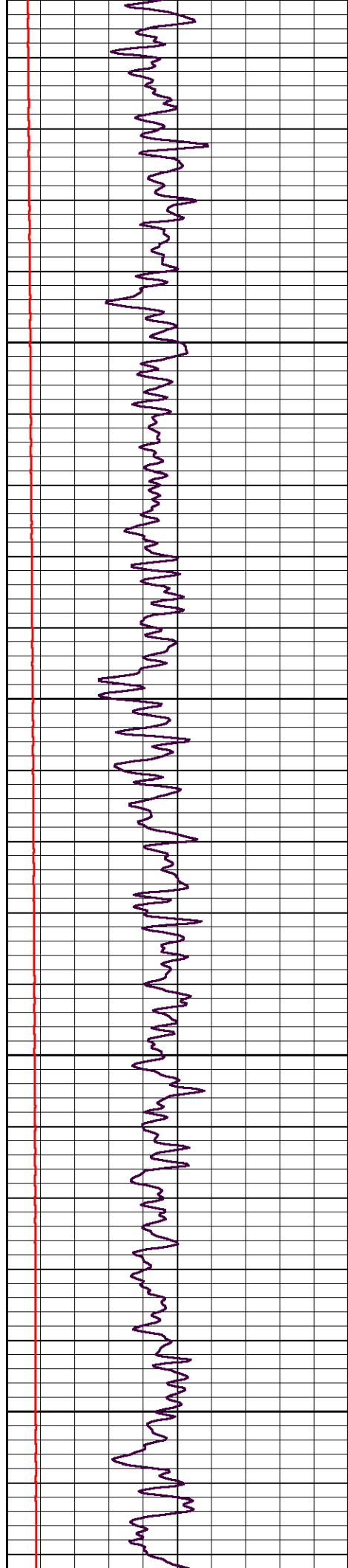
3350

3400

3450

3500



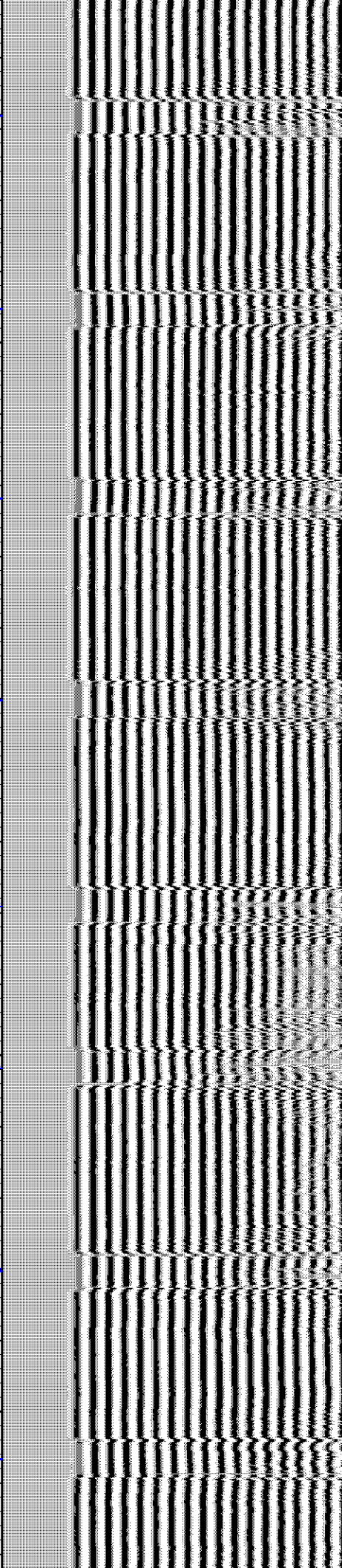
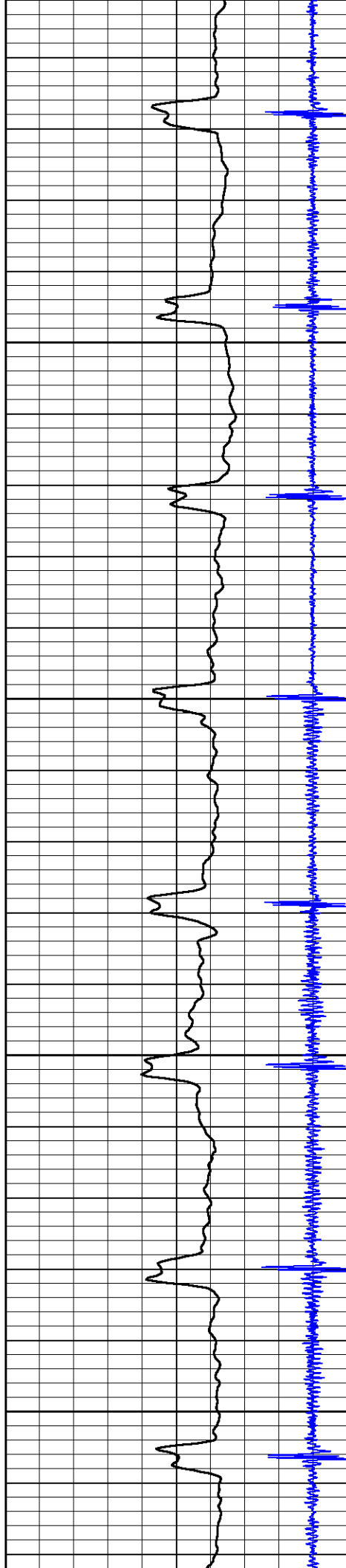


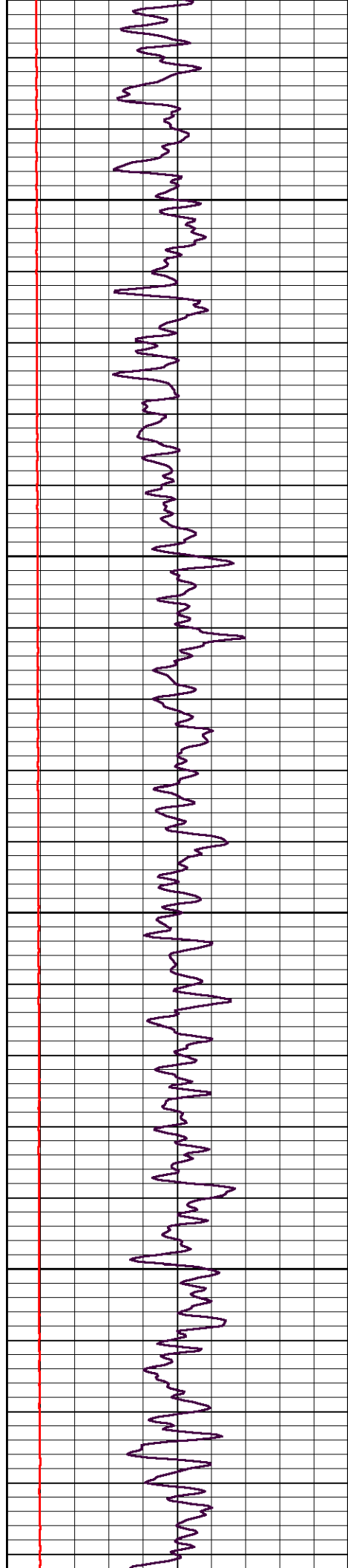
3550

3600

3650

3700



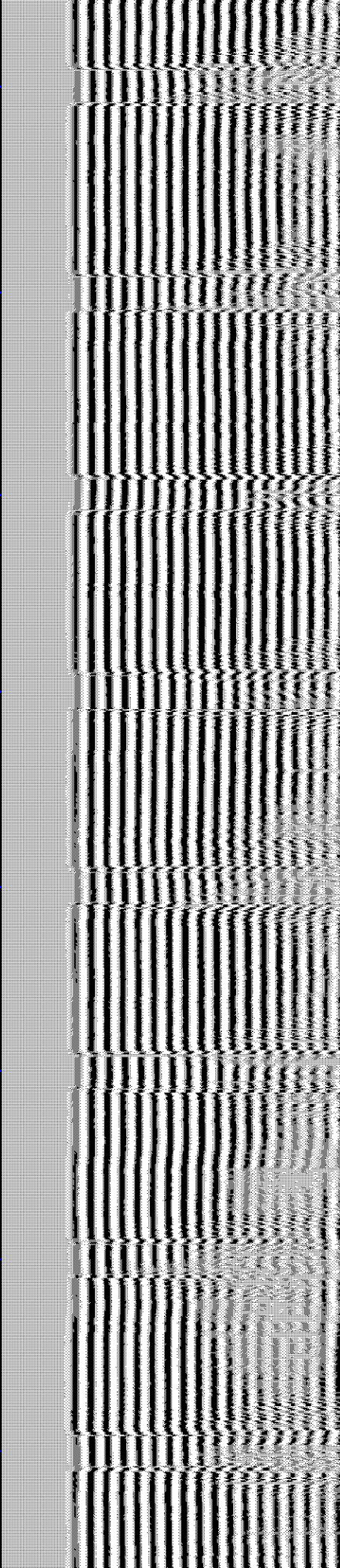
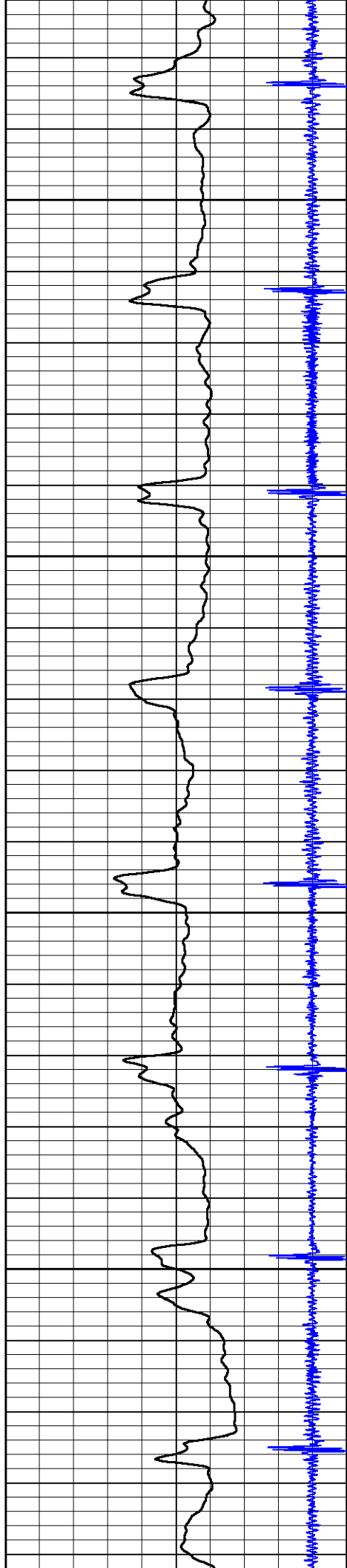


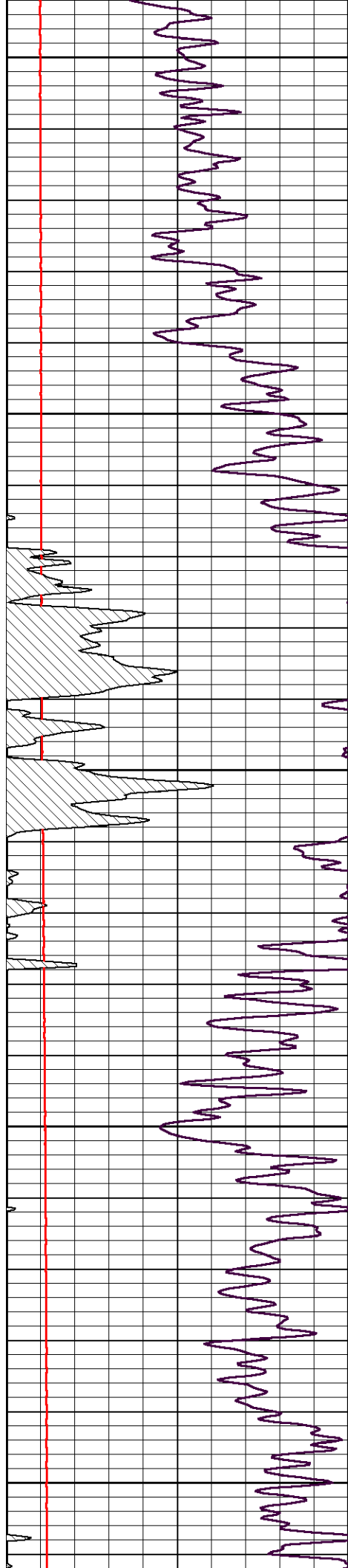
3750

3800

3850

3900





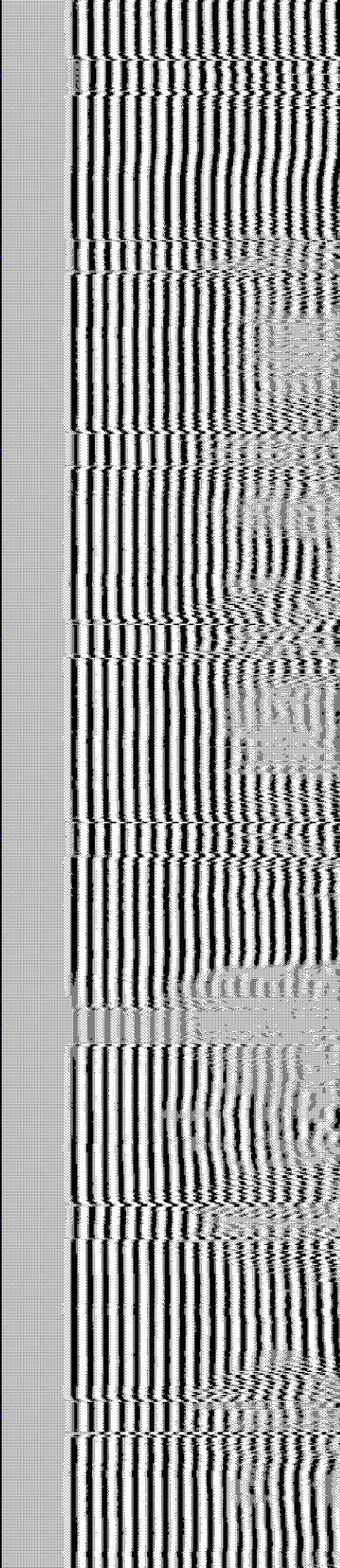
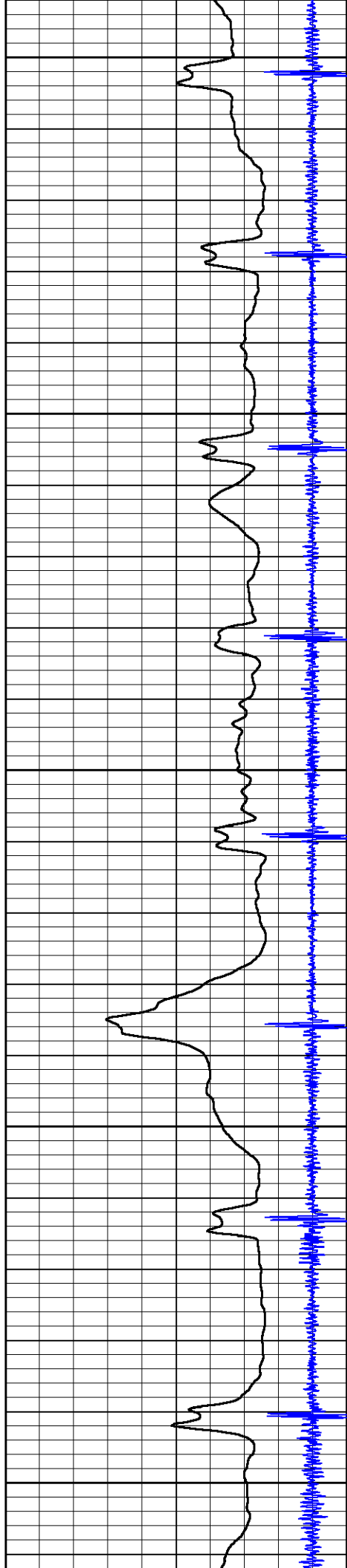
3950

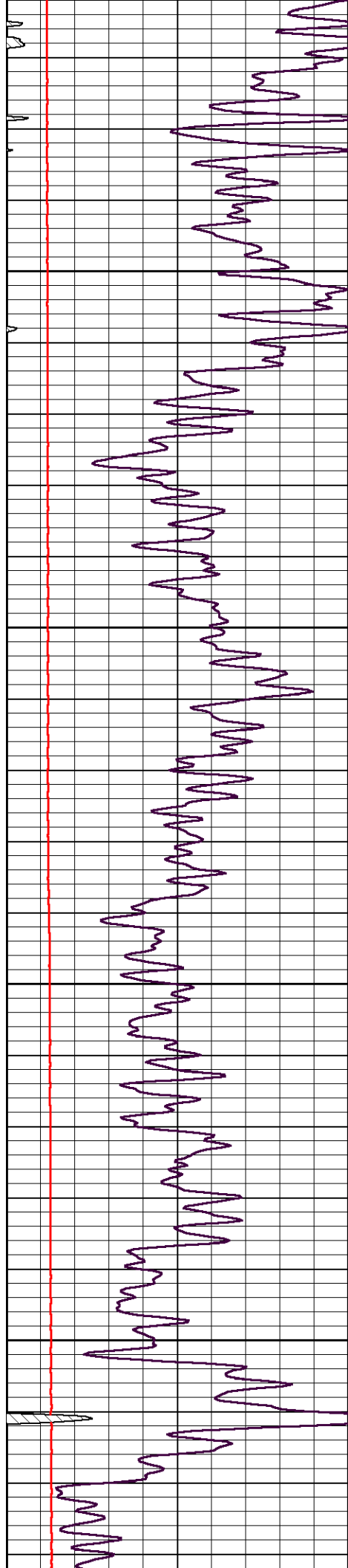
4000

4050

4100

4150



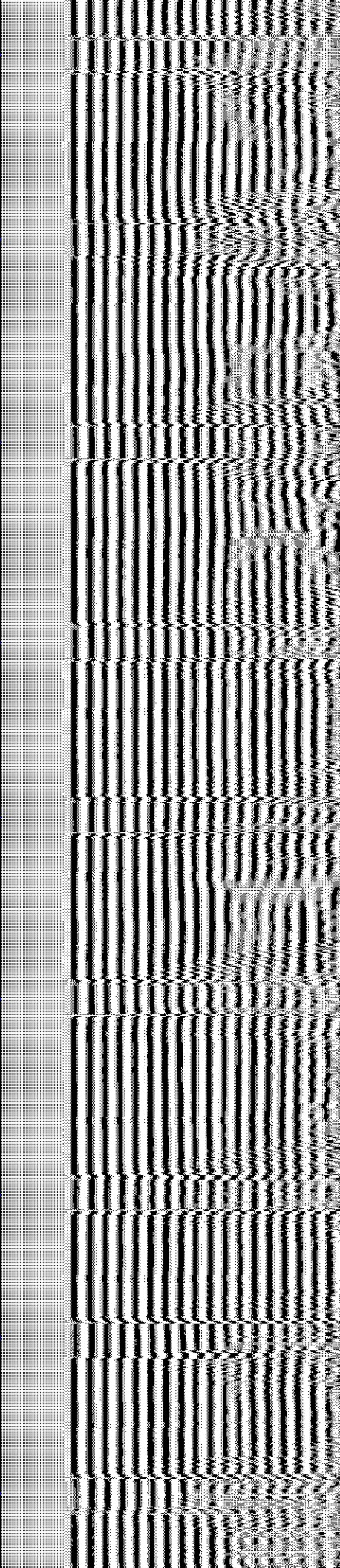
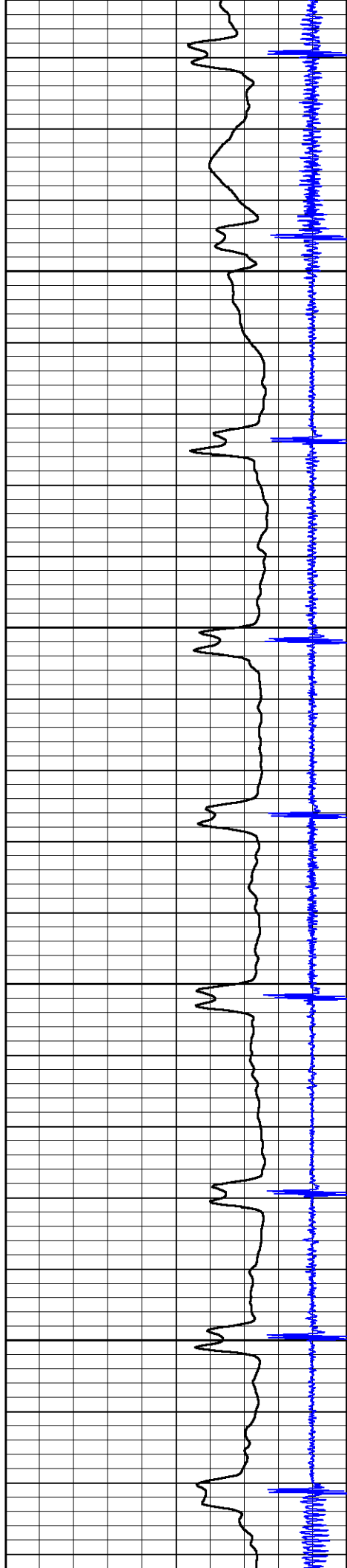


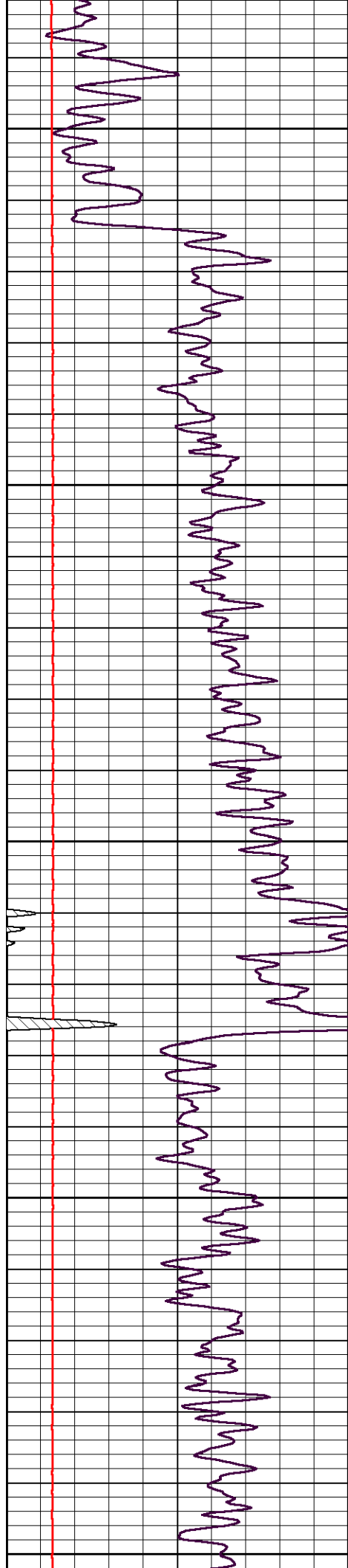
4200

4250

4300

4350





4400

4450

4500

4550

4600

