

APACHE CANYON 20-01 API# 05-071-06223 – TIMBER CREEK OPERATING
OGCC OPERATOR NUMBER 10672 - DATE: AUGUST 19, 2020
CORRECTIVE ACTIONS COMPLETED REGARDING COGCC FIR DOCUMENT # 690200494



PHOTO 1: FACING SOUTHWEST ALONG THE MAIN ROAD IN SOUTH FORK. A NEW 36 INCH CULVERT WAS INSTALLED AND THE ROADWAY SURFACE REGRADED TO DIRECT STORMWATER RUNOFF TO THE CULVERT INLET.

APACHE CANYON 20-01 API# 05-071-06223 – TIMBER CREEK OPERATING
OGCC OPERATOR NUMBER 10672 - DATE: AUGUST 19, 2020
CORRECTIVE ACTIONS COMPLETED REGARDING COGCC FIR DOCUMENT # 690200494



PHOTO 2: A NEW 36 INCH CULVERT WAS INSTALLED ALONG THE SOUTH FORK LEASE ROAD.

APACHE CANYON 20-01 API# 05-071-06223 – TIMBER CREEK OPERATING
OGCC OPERATOR NUMBER 10672 - DATE: AUGUST 19, 2020
CORRECTIVE ACTIONS COMPLETED REGARDING COGCC FIR DOCUMENT # 690200494

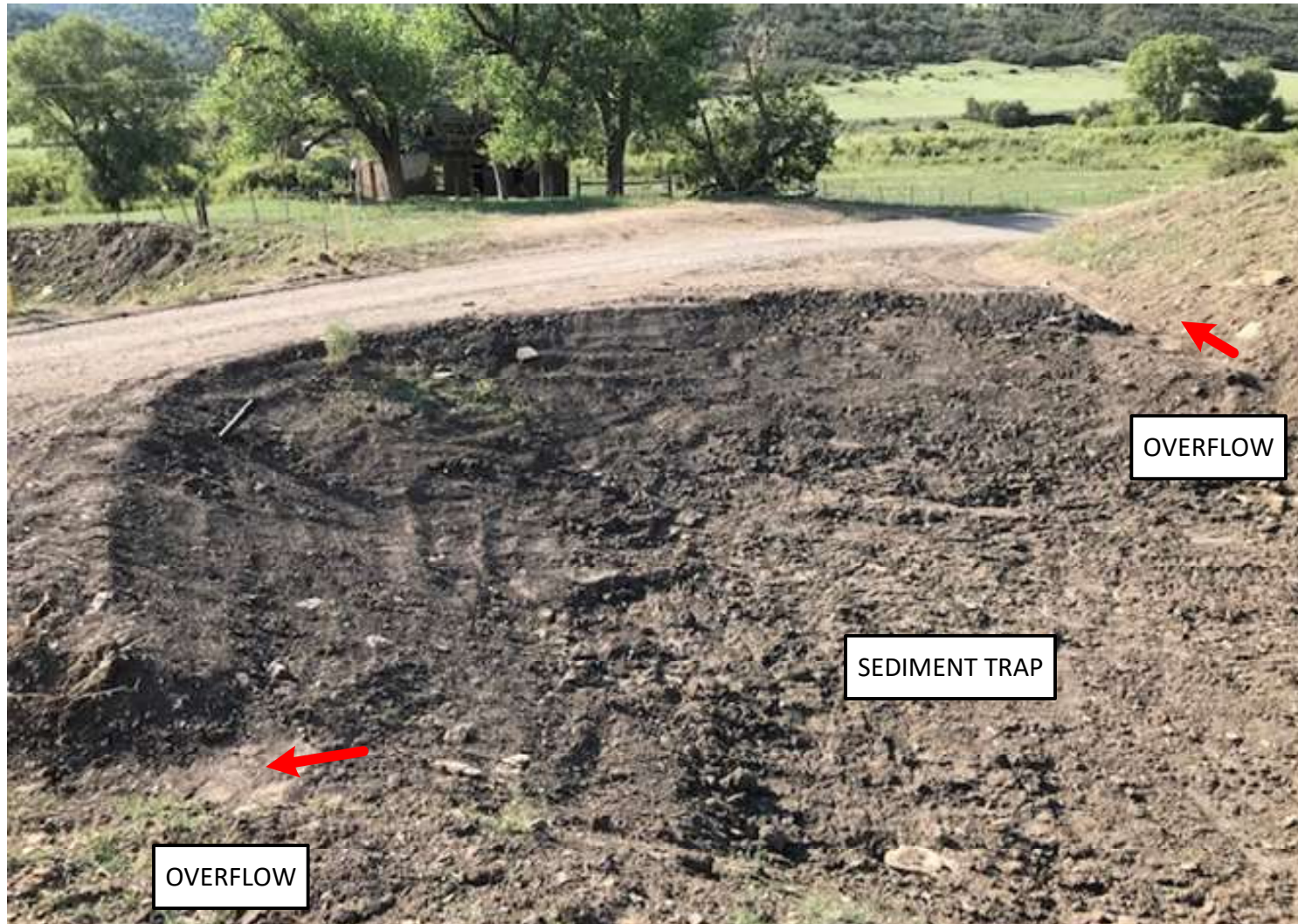


PHOTO 3: THIS AREA OF THE LEASE ROAD DID NOT HAVE A CULVERT. THE PVIOUS OPERATOR INSTALLED A SEDIMENT TRAP TO DETAIN SEDIMENT-LADEN RUNOFF FROM THE UNDISTURBED CANYON UPGRADIENT OF THE LEASE ROAD. THE SEDIMENT TRAP WAS DESIGNED TO DETAIN WATER WHICH ALLOWS TIME FOR SEDIMENT TO DROP OUT OF STORMWATER AND THEN OVERFLOW INTO THE BAR DITCH DIRECTING RUNOFF TO THE EXISTING CULVERTS BOTH TO THE NORTH AND TO THE SOUTH OF THE SEDIMENT TRAP. THE ACCUMULATED SEDIMENT FROM RECENT STORMS EVENTS HAS BEEN REMOVED. THE BMP FUNCTIONED AS DESIGNED.

APACHE CANYON 20-01 API# 05-071-06223 – TIMBER CREEK OPERATING
OGCC OPERATOR NUMBER 10672 - DATE: AUGUST 19, 2020
CORRECTIVE ACTIONS COMPLETED REGARDING COGCC FIR DOCUMENT # 690200494



PHOTO 4: OVERFLOW FROM THE SEDIMENT TRAP IS DIRECTED TO THE CULVERT INLET DOWN GRADIENT OF THE SEDIMENT TRAP.

APACHE CANYON 20-01 API# 05-071-06223 – TIMBER CREEK OPERATING
OGCC OPERATOR NUMBER 10672 - DATE: AUGUST 19, 2020
CORRECTIVE ACTIONS COMPLETED REGARDING COGCC FIR DOCUMENT # 690200494

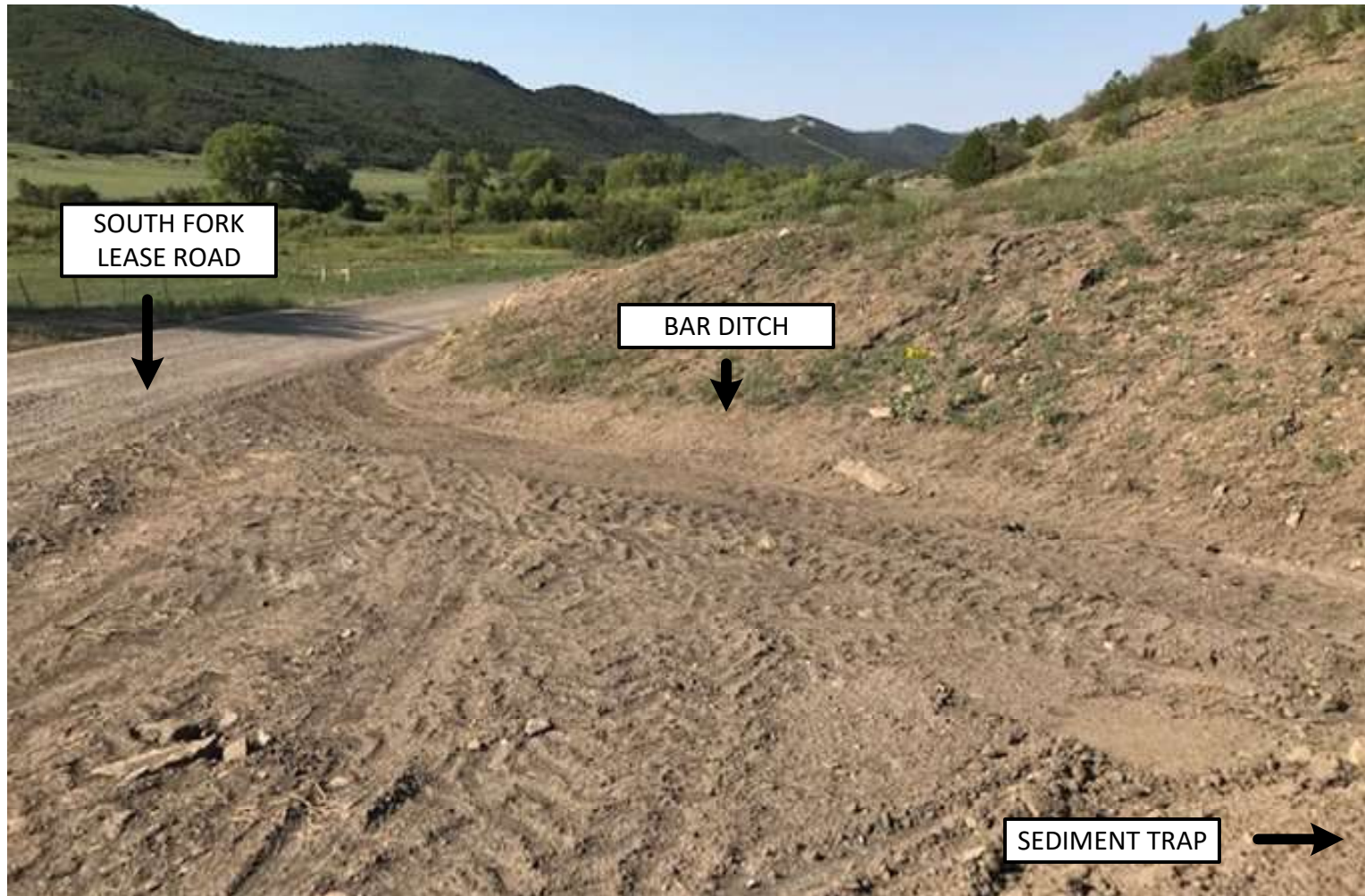


PHOTO 5: OVERFLOW FROM THE SEDIMENT TRAP IS DIRECTED TO THE CULVERT INLET DOWN GRADIENT OF THE SEDIMENT TRAP.



PHOTO 6: OVERFLOW FROM THE SEDIMENT TRAP IS DIRECTED TO THE CULVERT INLET DOWN GRADIENT OF THE SEDIMENT TRAP.

APACHE CANYON 20-01 API# 05-071-06223 – TIMBER CREEK OPERATING
OGCC OPERATOR NUMBER 10672 - DATE: AUGUST 19, 2020
CORRECTIVE ACTIONS COMPLETED REGARDING COGCC FIR DOCUMENT # 690200494



PHOTO 7: OVERFLOW FROM THE SEDIMENT TRAP IS DIRECTED TO THE CULVERT INLET DOWN GRADIENT OF THE SEDIMENT TRAP.

APACHE CANYON 20-01 API# 05-071-06223 – TIMBER CREEK OPERATING
OGCC OPERATOR NUMBER 10672 - DATE: AUGUST 19, 2020
CORRECTIVE ACTIONS COMPLETED REGARDING COGCC FIR DOCUMENT # 690200494



PHOTO 8: THE SEDIMENT ACCUMULATION WAS REMOVED FROM THE CULVERT INLET.

APACHE CANYON 20-01 API# 05-071-06223 – TIMBER CREEK OPERATING
OGCC OPERATOR NUMBER 10672 - DATE: AUGUST 24, 2020
CORRECTIVE ACTIONS COMPLETED REGARDING COGCC FIR DOCUMENT # 690200494



PHOTO 9: THE SEDIMENT ACCUMULATION WAS REMOVED FROM THE CULVERT INLET.