



Service Order #: 85507

Date: 16-Mar-20

Well Name	Location	County	St	API#		
HSR WILDER #15-18A		WELD	CO	05-123-15674		
Formation	Cement Via	Type Of Service	Well Type	Age	AFE#	PO#
	TUBING	CEMENT				

Customer: ANADARKO

Remarks: 15.8# G WITH ENHANCERS, 1.23Y, 5.219GAL/SK

187SK/41.0BBLS

RETAINER@ 860' - ETOC@ 667'

PERF@ 800' - PERF@ 1204'

RIG WASHED OUT @ 630'

Customer Rep: TOM

PH:

WELLBORE DATA				
Type	Size	Weight	Depth	Volume
Surface Casing:	8.625			
Production Casing:	4.500			
Intermediate:				
Drill Pipe:				
Tubing:	2.375			
Type	Size	Depth (Top)	Depth (Bot)	Volume
Liner:				
Open Hole:	7.875			

OTHER DATA		
BHT	Max PSI	Total Depth

Packer or RetainerType / Depth:

Perf Depths:	#	Total
	0	0
	0	
	0	

TIME	PUMP RATES		DENSITY (lb/gl)	PRESS (psi)	STG TOT (bbls)	TOTAL (bbls)	REMARKS
	WATER (gpm)	PUMP (bpm)					
14:33	0	0.0	8.00	11	0.0	0.0	Z
14:44	0	0.9	8.00	0	6.0	6.0	START MUDFLUSH
14:49	0	2.8	8.00	175	10.0	10.0	END MUDFLUSH/ START WATER SPACER
14:55	43	0.0	15.85	6	5.5	15.5	END WATER SPACER/ START CEMENT
15:12	0	3.0	15.73	313	41.0	56.6	END CEMENT/ START WATER
15:13	13	1.2	15.91	159	0.6	59.7	END WATER

Summary

Max Fl. Rate Avg Fl. Rate Max Psi Avg Psi
3.0 1.7 5,204 90

Customer Acknowledgement:

Service Rating:

- ☐ Satisfactory
☐ Unsatisfactory

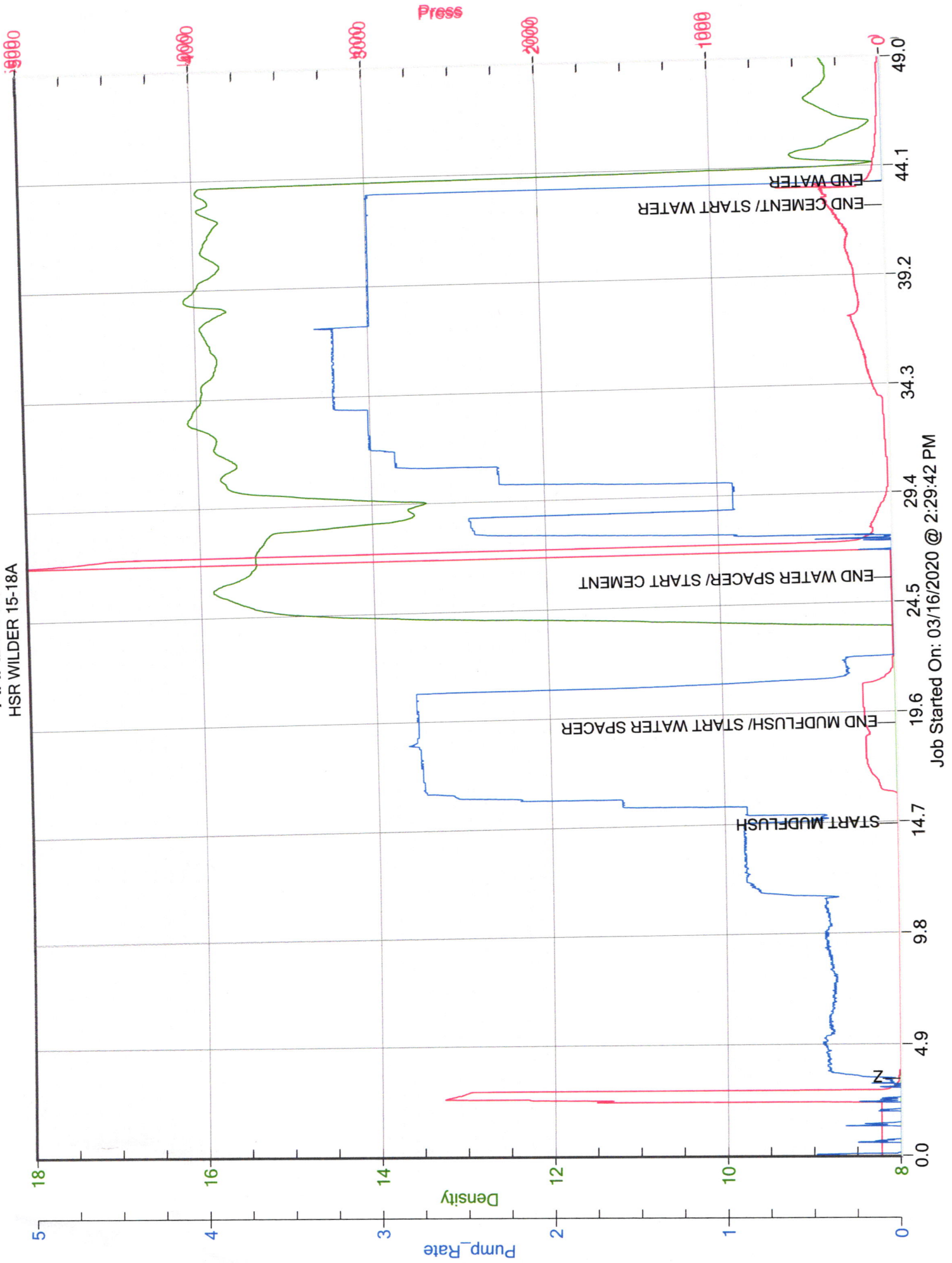
Cementer:

JEREMIE

PRODUCTS USED

FLUID PROVIDED BY CUSTOMER
PH 8.2, TDS 335, TEMP 65F
DID CALIBRATION ON METER

ANADARKO
HSR WILDER 15-18A





Service Order #: 74457

Date: 24-Mar-20

Well Name	Location	County	St	API#		
HSR-WILDER15-8A		WELD	CO	0512315674		
Formation	Cement Via	Type Of Service	Well Type	Age	AFE#	PO#
	CASING	PLUG		REWORK		

Customer: ANADARKO

Remarks: ON LOCATION @ 8 AM. FINISH SPOTTING @ 9:15
DUE TO MUDDY LOCATION.
CLASS G CMT W/ENHANCERS, 1.23 YIELD,
15.8 LBS/GAL
PUMPED 4 BBLS CMT, 18 SKS (SCOUR)

Customer Rep: T.LAUFER

PH:

WELLBORE DATA				
Type	Size	Weight	Depth	Volume
Surface Casing:	8.625	24.0	463.0	
Production Casing:	4.500	11.6	619.0	
Intermediate:				
Drill Pipe:				
Tubing:				
Type	Size	Depth (Top)	Depth (Bot)	Volume
Liner:				
Open Hole:	7.875	463.0	619.0	

OTHER DATA		
BHT	Max PSI	Total Depth
	800	619.0

Packer or RetainerType / Depth:

Perf Depths:	#	Total
619.0	1	1
	0	
	0	

TIME	PUMP RATES		DENSITY	PRESS	STG TOT	TOTAL	REMARKS
	WATER (gpm)	PUMP (bpm)	(lb/gal)	(psi)	(bbbls)	(bbbls)	
11:50	0	0.1	12.87	2,433	0.2	0.2	PSI / KICK OUT TEST
11:52	0	0.0	11.09	0	0.2	0.2	START OF 10 BBL H2O
11:57	0	2.4	15.90	42	10.0	10.0	START OF CEMENT 15.8 # SCOUR
11:59	0	2.4	14.24	71	4.0	14.5	END OF CEMENT / START OF OF FLUSH
12:21	0	2.0	11.29	88	47.5	62.8	CEMENT RETURNS TO TANK
12:33	0	0.0	11.63	0	70.4	85.7	OFF LINE

Summary

Max Fl. Rate	Avg Fl. Rate	Max Psi	Avg Psi
2.4	2.1	2,899	58

Customer Acknowledgement:

Service Rating:

- ☐ Satisfactory
☐ Unsatisfactory

Cementer:

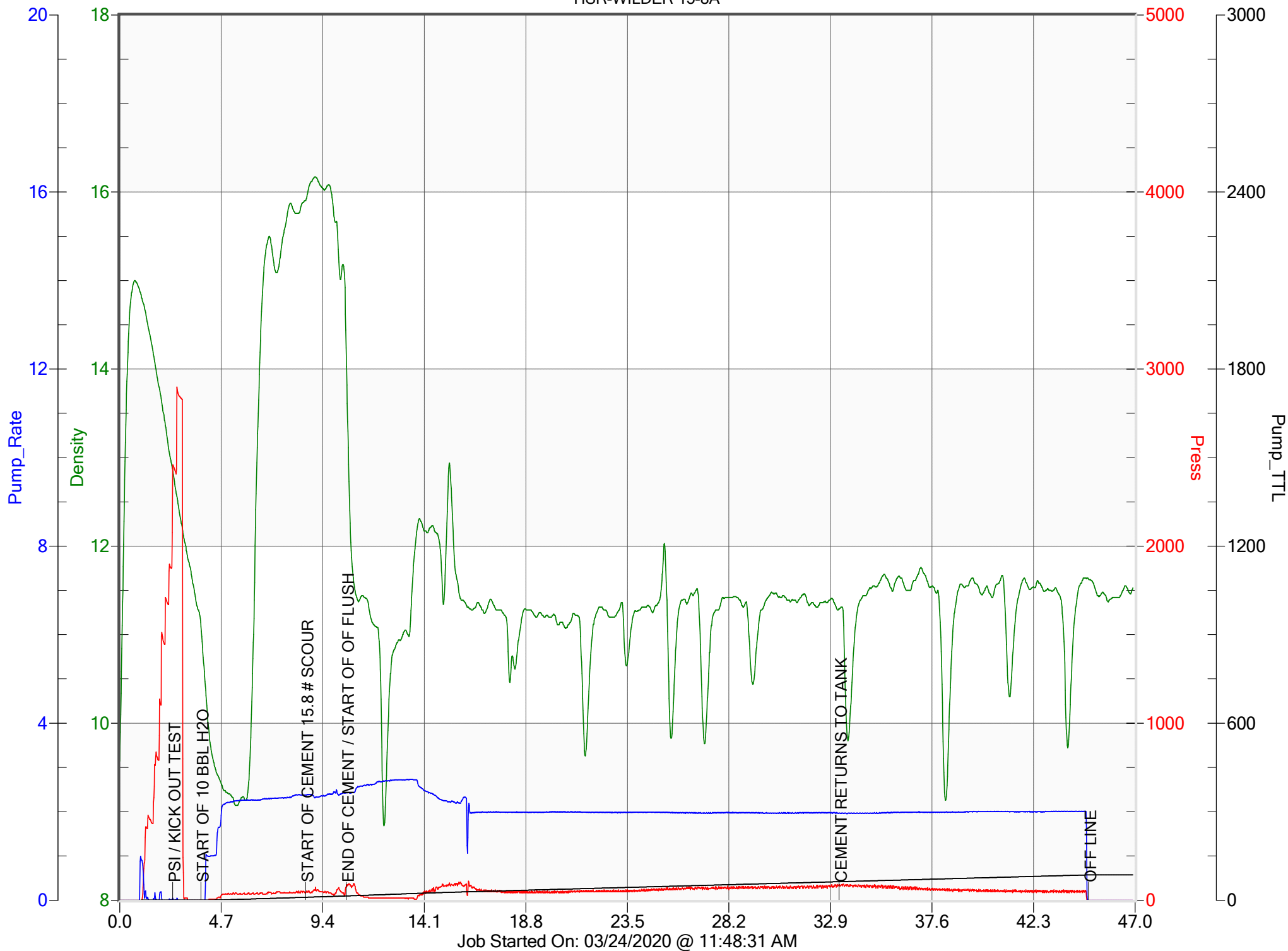
R.GARCIA

PRODUCTS USED

1ST. LOAD OF WATER TEMP 67.8°F ,PH 8.8,
PPM318

ANADARKO

HSR-WILDER 15-8A





Service Order #: 74438

Date: 26-Mar-20

Well Name	Location	County	St	API#		
HSR-WILDER 15-8A		WELD	CO	0512315674		
Formation	Cement Via	Type Of Service	Well Type	Age	AFE#	PO#
	TUBING	PLUG		REWORK		

Customer: ANADARKO

Remarks: ON LOCATION @ 9:30 AM
CLASS G CMT W/ENHANCERS, 1.23 YIELD,
15.8 LBS/GAL
PUMPED 50 SKS, 10.9 BBLS
EST. TOC 629' - 529'

Customer Rep: T.LAUFER

PH:

WELLBORE DATA				
Type	Size	Weight	Depth	Volume
Surface Casing:	8.625	24.0	463.0	
Production Casing:				
Intermediate:				
Drill Pipe:				
Tubing:	2.375	4.7	629.0	
Type	Size	Depth (Top)	Depth (Bot)	Volume
Liner:				
Open Hole:	7.875			

OTHER DATA		
BHT	Max PSI	Total Depth
	500	629.0

Packer or RetainerType / Depth:

Perf Depths:	#	Total
	0	0
	0	
	0	

TIME	PUMP RATES		DENSITY	PRESS	STG TOT	TOTAL	REMARKS
	WATER (gpm)	PUMP (bpm)	(lb/gal)	(psi)	(bbls)	(bbls)	
10:05	0	0.0	12.86	2,735	0.2	0.2	PSI / KICK OUT TEST
10:07	0	0.0	10.31	47	0.2	0.2	START OF 10 BBL MUDFLUSH
10:12	0	2.1	15.84	135	10.0	10.0	START OF 5 BBL FRESH
10:15	0	2.1	15.89	135	5.0	16.6	START OF CEMENT
10:21	0	2.1	12.69	207	10.8	27.5	END OF CMT / START OF 2 BBL DISPLACEMENT
10:22	0	0.1	6.89	29	2.0	30.5	OFF LINE
10:30	0	0.1	12.73	18	2.3	30.8	Paused 10:30:16

Summary

Max Fl. Rate	Avg Fl. Rate	Max Psi	Avg Psi
2.1	2.0	2,776	143

Customer Acknowledgement:

Service Rating:

- ☐ Satisfactory
☐ Unsatisfactory

Cementer:

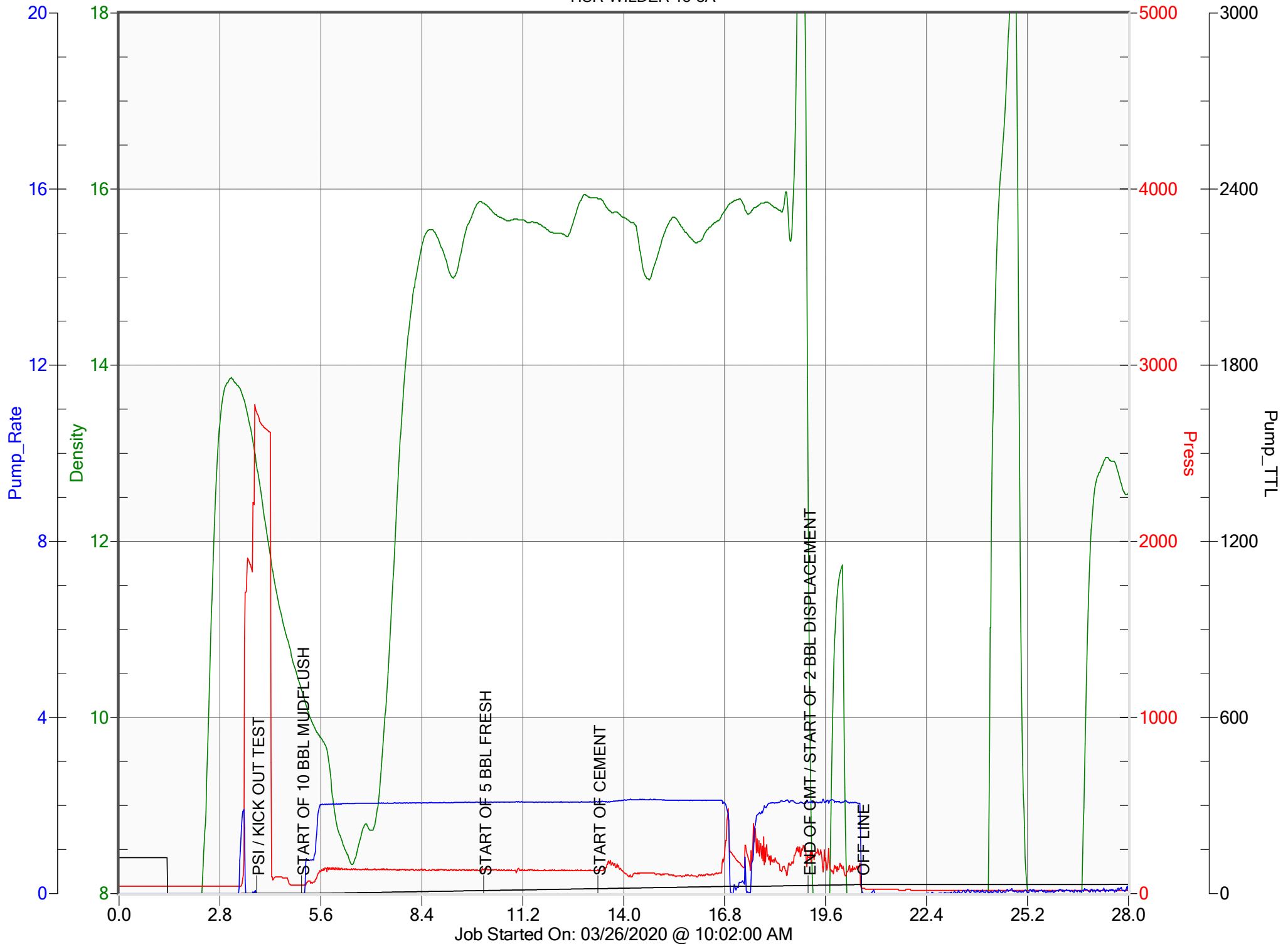
R.GARCIA

PRODUCTS USED

WATER TEMP 67°
PPM 484
PH 7.2

ANADARKO

HSR-WILDER 15-8A





Service Order #: 85512

Date: 30-Mar-20

Well Name	Location	County	St	API#		
WILDER 15-8A	08:50	WELD	CO	05-123-15674		
Formation	Cement Via	Type Of Service	Well Type	Age	AFE#	PO#
	TUBING	CEMENT				

Customer: ANADARKO

Remarks: 15.8# G WITH ENHANCERS, 1.23Y, 5.219GAL/SK

100SK/21.9BBLS

EOT@ 577' - ETOC@ 295'

TAGGED @ 410'

132SX/29.0BBLS

EOT @ 410' - ETOC @ 0'

Customer Rep: TOM

PH:

WELLBORE DATA				
Type	Size	Weight	Depth	Volume
Surface Casing:	8.625		463.0	
Production Casing:				
Intermediate:				
Drill Pipe:				
Tubing:	2.375			

Type	Size	Depth (Top)	Depth (Bot)	Volume
Liner:				
Open Hole:	7.875			

OTHER DATA		
BHT	Max PSI	Total Depth

Packer or RetainerType / Depth:

Perf Depths:	#	Total
	0	0
	0	
	0	

TIME	PUMP RATES		DENSITY (lb/gal)	PRESS (psi)	STG TOT (bbls)	TOTAL (bbls)	REMARKS
	WATER (gpm)	PUMP (bpm)					
9:57	0	0.1	8.00	6	0.0	0.0	START MUDFLUSH
10:02	0	3.4	8.00	128	10.0	10.0	END MUDFLUSH/ START WATER SPACER
10:06	0	0.6	15.35	11	5.8	16.5	END WATER SPACER/ START CEMENT
10:14	0	1.7	15.80	35	22.0	38.5	END CEMENT/ START WATER
10:15	0	0.5	8.20	11	1.2	40.6	END WATER
14:50	0	0.0	8.00	0	0.0	0.0	START MUDFLUSH
14:55	0	3.0	8.00	53	9.9	9.9	END MUDFLUSH/ START WATER SPACER
14:59	70	1.7	15.93	6	5.4	15.5	END WATER SPACER/ START CEMENT
15:08	0	1.5	16.30	224	29.0	44.5	END CEMENT
15:11	0	0.0	10.53	53	30.0	45.6	Paused 15:11:13

Summary

Max Fl. Rate	Avg Fl. Rate	Max Psi	Avg Psi
3.4	1.2	2,579	63

Customer Acknowledgement:

Service Rating:

- ☐ Satisfactory
☐ Unsatisfactory

Cementer:

JEREMIE

PRODUCTS USED

FLUID PROVIDED BY CUSTOMER
PH 7.9, TDS 465, TEMP 63F

