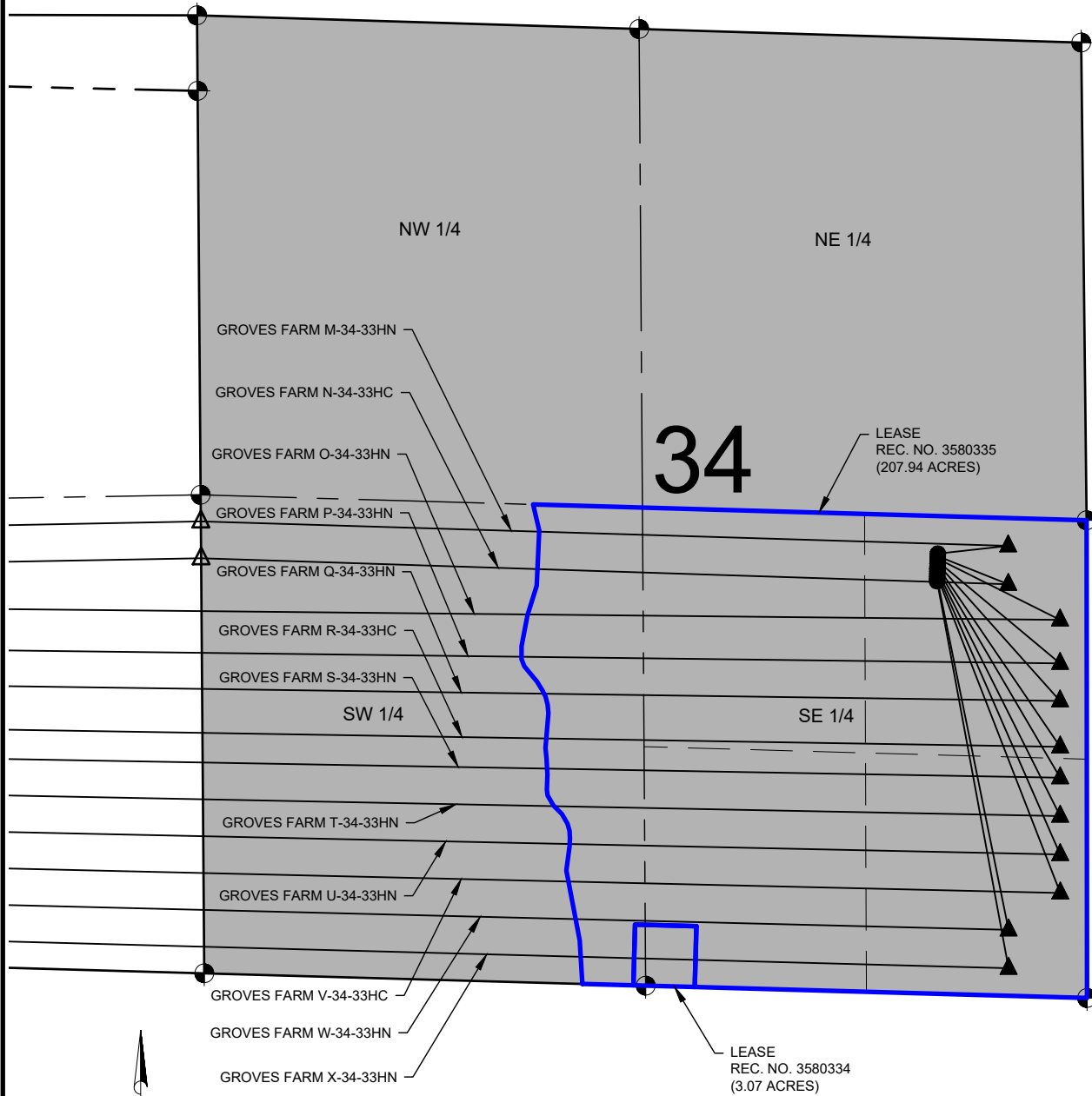


GROVES FARM 34-L PAD LEASE DRAWING



NOTES:

GROVES FARM M-34-33HN TO BE AT 2636' FSL & 892' FEL.
BOTTOM HOLE AT 2476' FSL & 470' FWL, SEC 33.
GROVES FARM N-34-33HC TO BE AT 2621' FSL & 892' FEL.
BOTTOM HOLE AT 2264' FSL & 470' FWL, SEC 33.
GROVES FARM O-34-33HN TO BE AT 2606' FSL & 892' FEL.
BOTTOM HOLE AT 2076' FSL & 160' FWL, SEC 33.
GROVES FARM P-34-33HN TO BE AT 2591' FSL & 893' FEL.
BOTTOM HOLE AT 1837' FSL & 160' FWL, SEC 33.
GROVES FARM Q-34-33HN TO BE AT 2576' FSL & 893' FEL.
BOTTOM HOLE AT 1630' FSL & 160' FWL, SEC 33.
GROVES FARM R-34-33HC TO BE AT 2561' FSL & 894' FEL.
BOTTOM HOLE AT 1378' FSL & 160' FWL, SEC 33.

GROVES FARM S-34-33HN TO BE AT 2546' FSL & 894' FEL.
BOTTOM HOLE AT 1208' FSL & 160' FWL, SEC 33.
GROVES FARM T-34-33HN TO BE AT 2531' FSL & 894' FEL.
BOTTOM HOLE AT 997' FSL & 160' FWL, SEC 33.
GROVES FARM U-34-33HN TO BE AT 2516' FSL & 895' FEL.
BOTTOM HOLE AT 785' FSL & 160' FWL, SEC 33.
GROVES FARM V-34-33HC TO BE AT 2501' FSL & 895' FEL.
BOTTOM HOLE AT 574' FSL & 160' FWL, SEC 33.
GROVES FARM W-34-33HN TO BE AT 2486' FSL & 896' FEL.
BOTTOM HOLE AT 363' FSL & 470' FWL, SEC 33.
GROVES FARM X-34-33HN TO BE AT 2471' FSL & 896' FEL.
BOTTOM HOLE AT 152' FSL & 470' FWL, SEC 33.

DISCLAIMER:
THIS PLOT DOES NOT REPRESENT A MONUMENTED LAND SURVEY AND SHOULD NOT BE
RELIED UPON TO DETERMINE BOUNDARY LINES, PROPERTY OWNERSHIP OR OTHER
PROPERTY INTERESTS. PARCEL LINES, IF DEPICTED HAVE NOT BEEN FIELD VERIFIED AND
MAY BE BASED UPON PUBLICLY AVAILABLE DATA THAT ALSO HAS NOT BEEN
INDEPENDENTLY VERIFIED.

LEGEND

- = PROPOSED WELL
- ▲ = LANDING POINT
- = LEASE LINES
- △ = VERTEX POINT