

Name	Arrive	Depart	Name	Arrive	Depart	Name	Arrive	Depart
Wellsite	Wellsite	Wellsite	Wellsite	Wellsite	Wellsite	Wellsite	Wellsite	Wellsite
Tien Bui	2020-06-12	2020-06-15						

Mud Properties Record

Date / Time	Run No.	Depth (ft)	Mud Type	Density (ppg)	Viscosity (cP)	pH	Fluid Loss (cm3)	Oil / Water	Source	Total Chlorides (ppm)	K+ (%)
2020-06-12 23:03	1	1964.00	Oil Based Mud	9.4	14	N/A	21.0	68/20	Active Pit	26500	0.00
2020-06-14 09:14	1	9941.00	Oil Based Mud	9.6	11	N/A	15.8	72.8/15.6	Active Pit	25500	0.00

Equipment and Service Data

Run No.	Tool	Serial Number	Measurement	Sensor Offset (ft)	Bit Offset (ft)	Max O.D. (in)	Min I.D. (in)
1	AutoTrak Curve Steering Unit	15068338	Near Bit Inclination	5.93	6.78	7.000	4.330
1	AutoTrak Curve Steering Unit	15068338	Near Bit VSS	5.93	6.78	7.000	4.330
1	AutoTrak Curve MWD	12049472	Gamma (single)	2.75	12.95	7.000	3.250
1	AutoTrak Curve MWD	12049472	Directional (mag)	12.27	22.47	7.000	3.250

Service and Tool Mnemonics

Mnemonic	Name	Description
ATC SU	AutoTrak Curve SU	Auto Trak Curve Steering Unit
ATC MWD	AutoTrak Curve MWD	Auto Trak Curve MWD
ATC LCPM	AutoTrak Curve LCPM	Auto Trak Curve LCPM

Comments

1	Depth measurements were obtained from a depth control system not supplied or operated by Baker Hughes. Due to lack of control by Baker Hughes logging engineers, depth calibrations and measurements could not be independently verified.
2	Baker Hughes LWD Run 1 utilized 6 ¾ inch NaviGamma service (Gamma Ray and Directional) behind an 8 1/2 inch bit and rotary steerable assembly from 1964 to 14802 feet MD (1964 to 6741 feet TVD).
3	The Gamma Ray Apparent (GRAM) data is presented 0 to 300 API, per the customer's request.

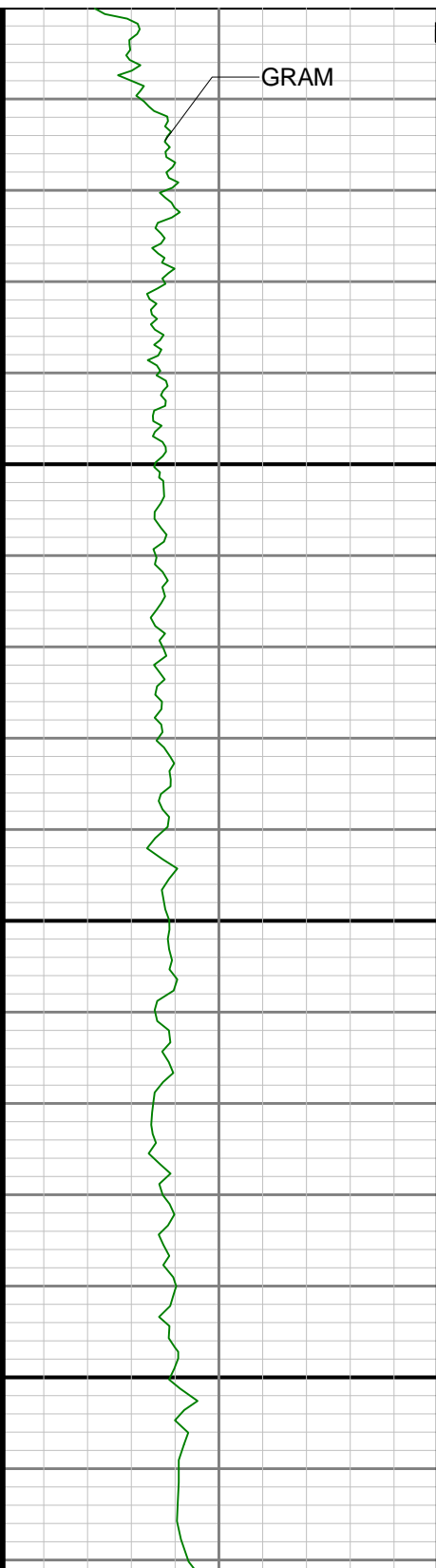
Remarks

Number	Depth (ft)	Hole Section (in)	Run No.	Remark
1	6850.00	8.500	1	The interval from 6850 to 6888 feet MD (6594 to 6617 feet TVD) has gaps in Gamma Ray data due to losing connection with the third party Pason depth tracking system.

Curve Mnemonics

Presented Curves	Description	Units
ROPA	Depth Averaged ROP 3 ft Average	ft/h
WOBA	Weight On Bit	klb
GRAM	Gamma Ray - Apparent - Memory 0.5 ft Average	API
TCDM	Directional Real-Time Survey Temperature	degF

Gamma Ray - Apparent 0.5 ft Average GRAM	TVD 1:240 feet	Depth Averaged ROP 3 ft Average ROPA	Downhole Temperature TCDM
0 300		1000 0	0 300
API		ft/h	degF
			Weight On Bit - Average 1 ft Average WOBA
			0 50
			klb

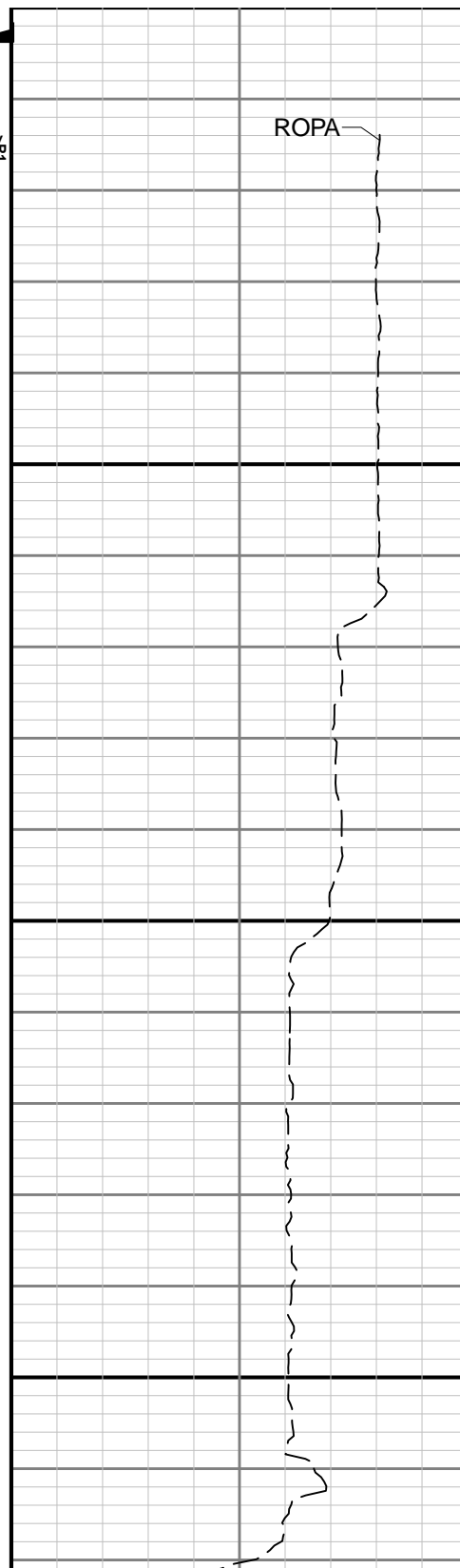


GRAM

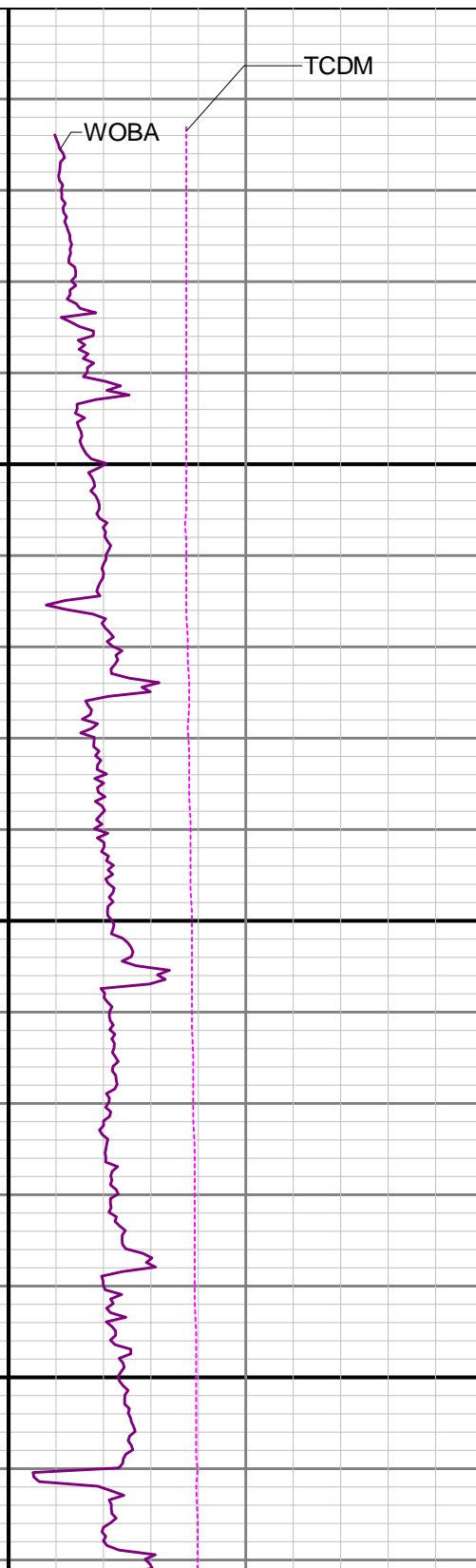
9 5/8" Casing
K1

2000

2100

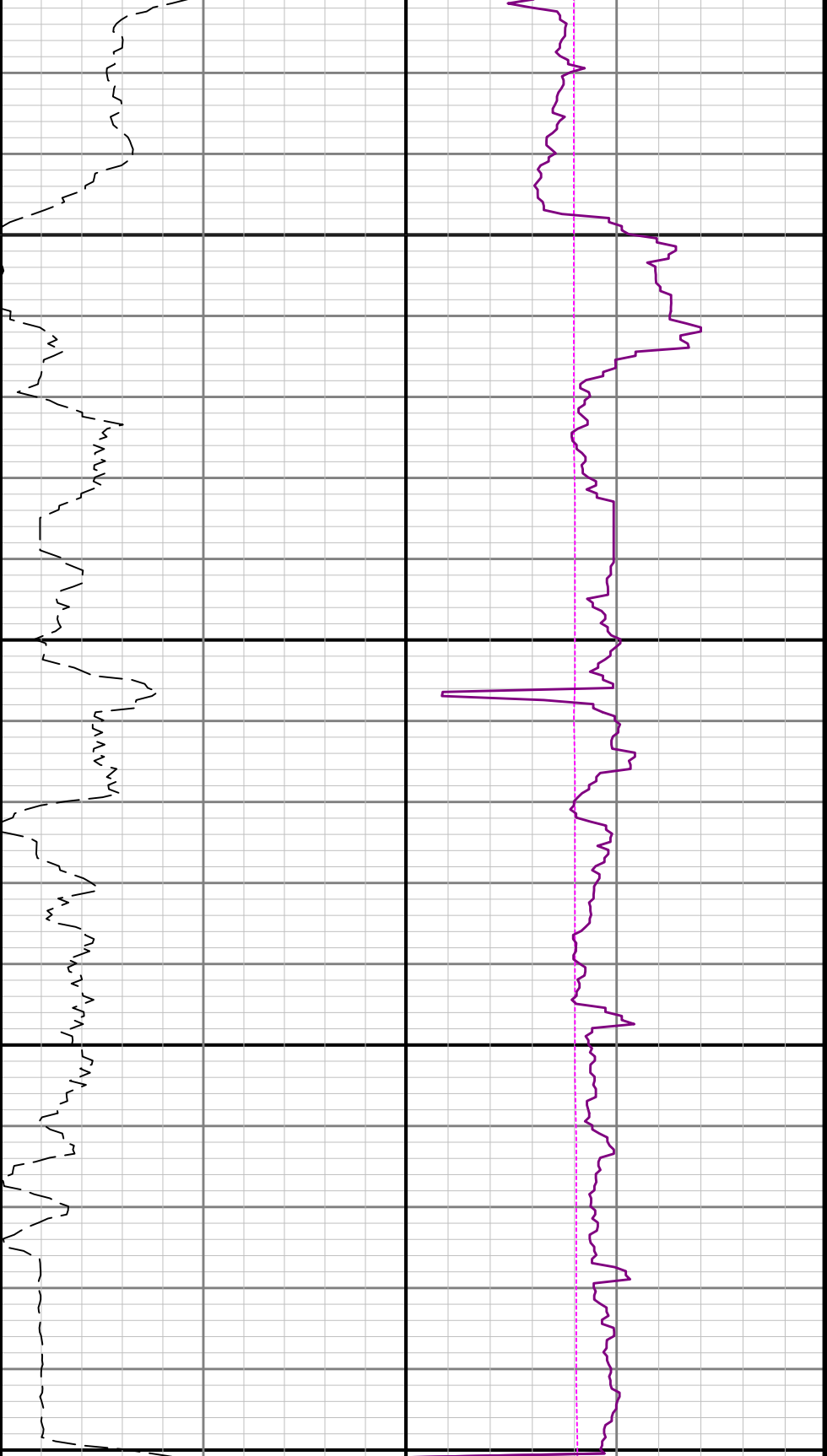


ROPA



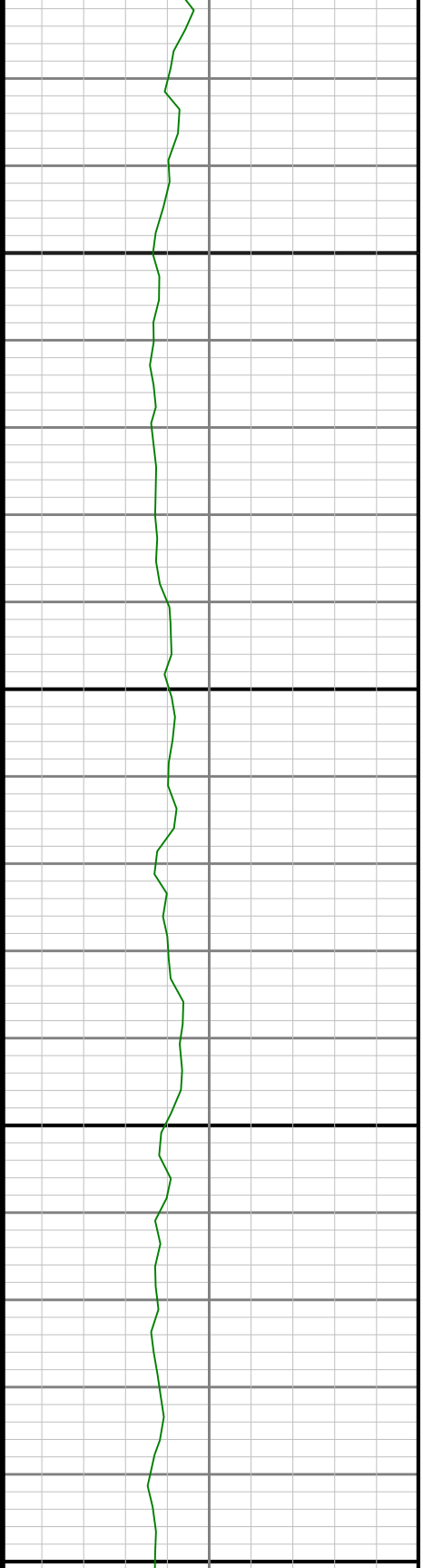
WOBA

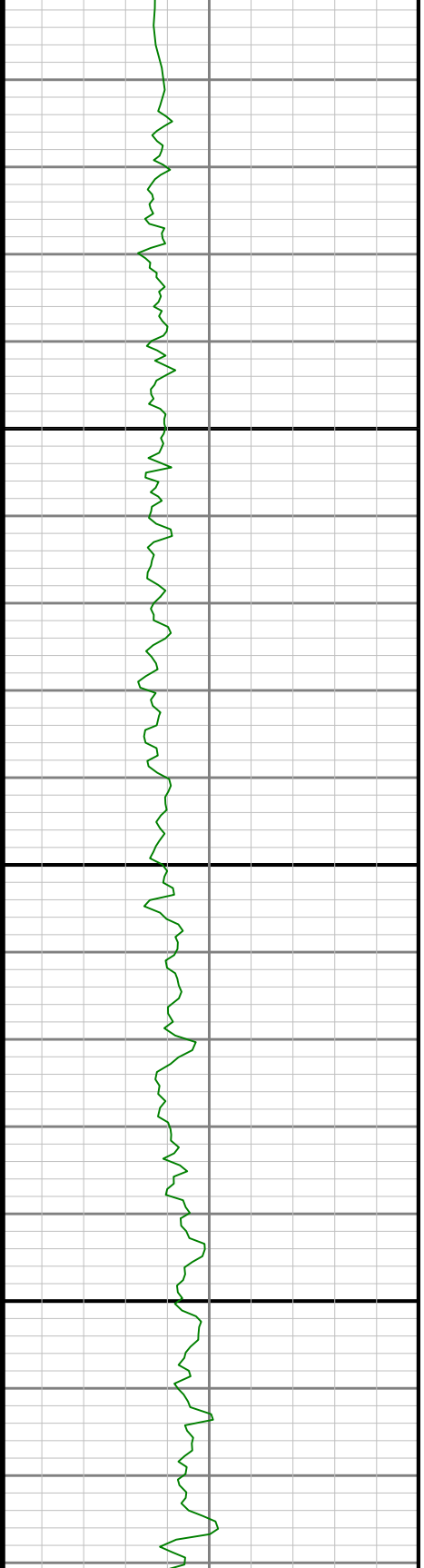
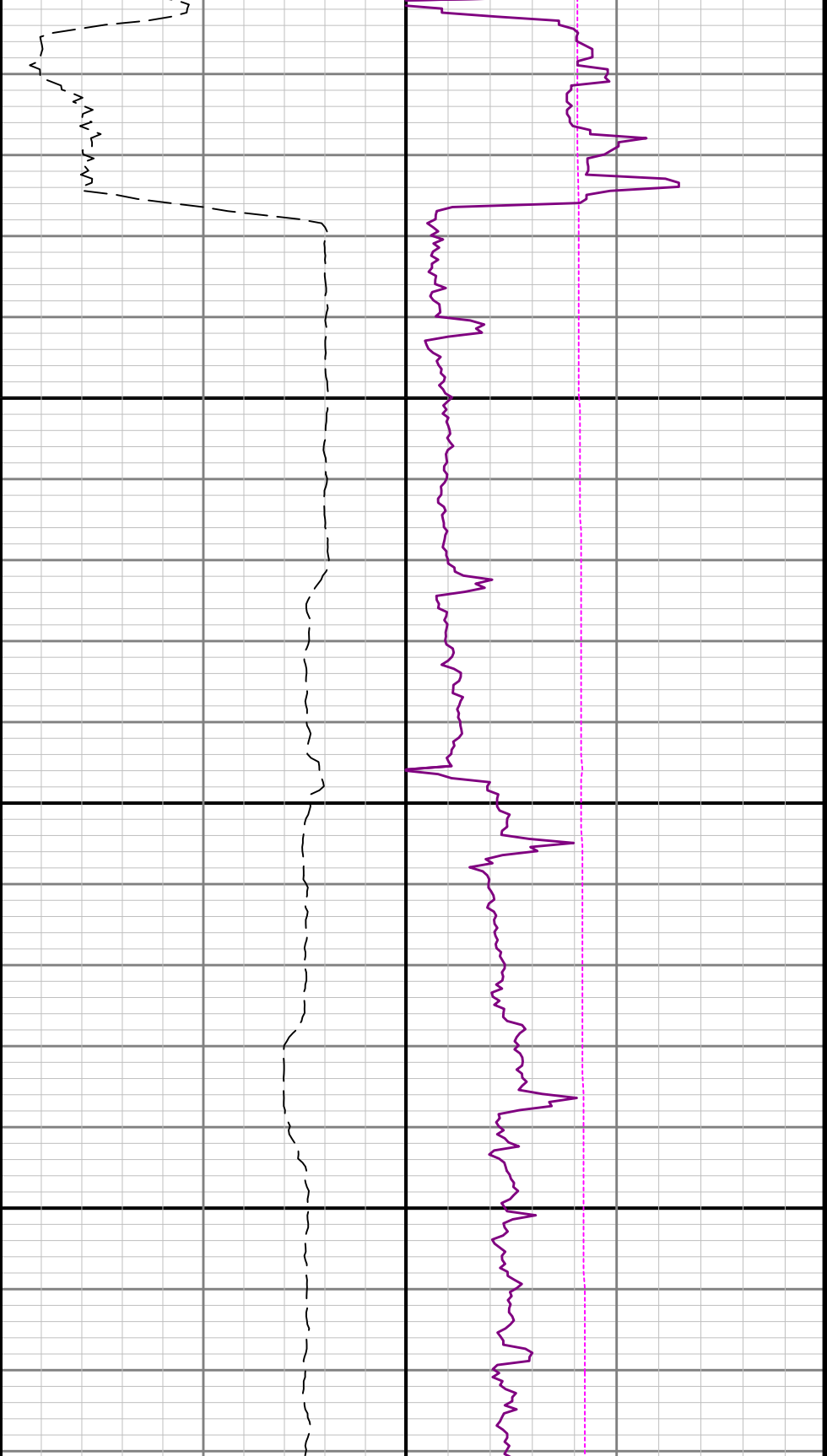
TCDM

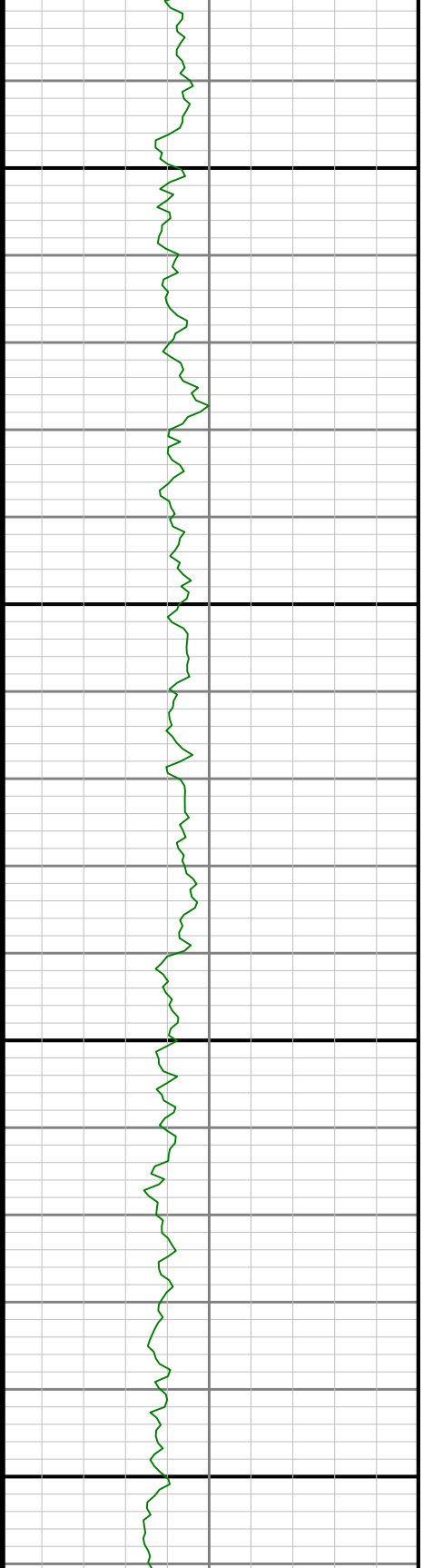
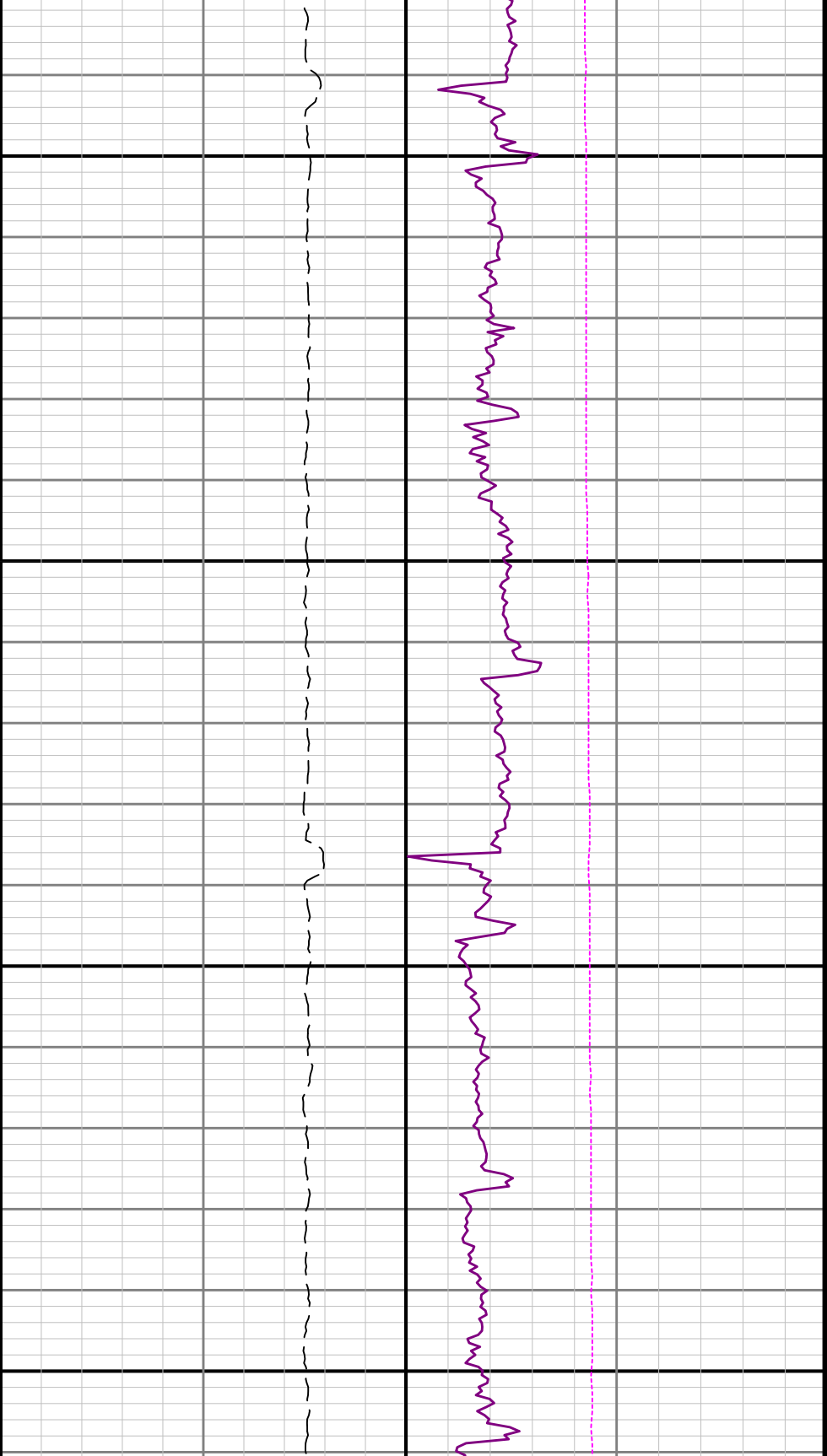


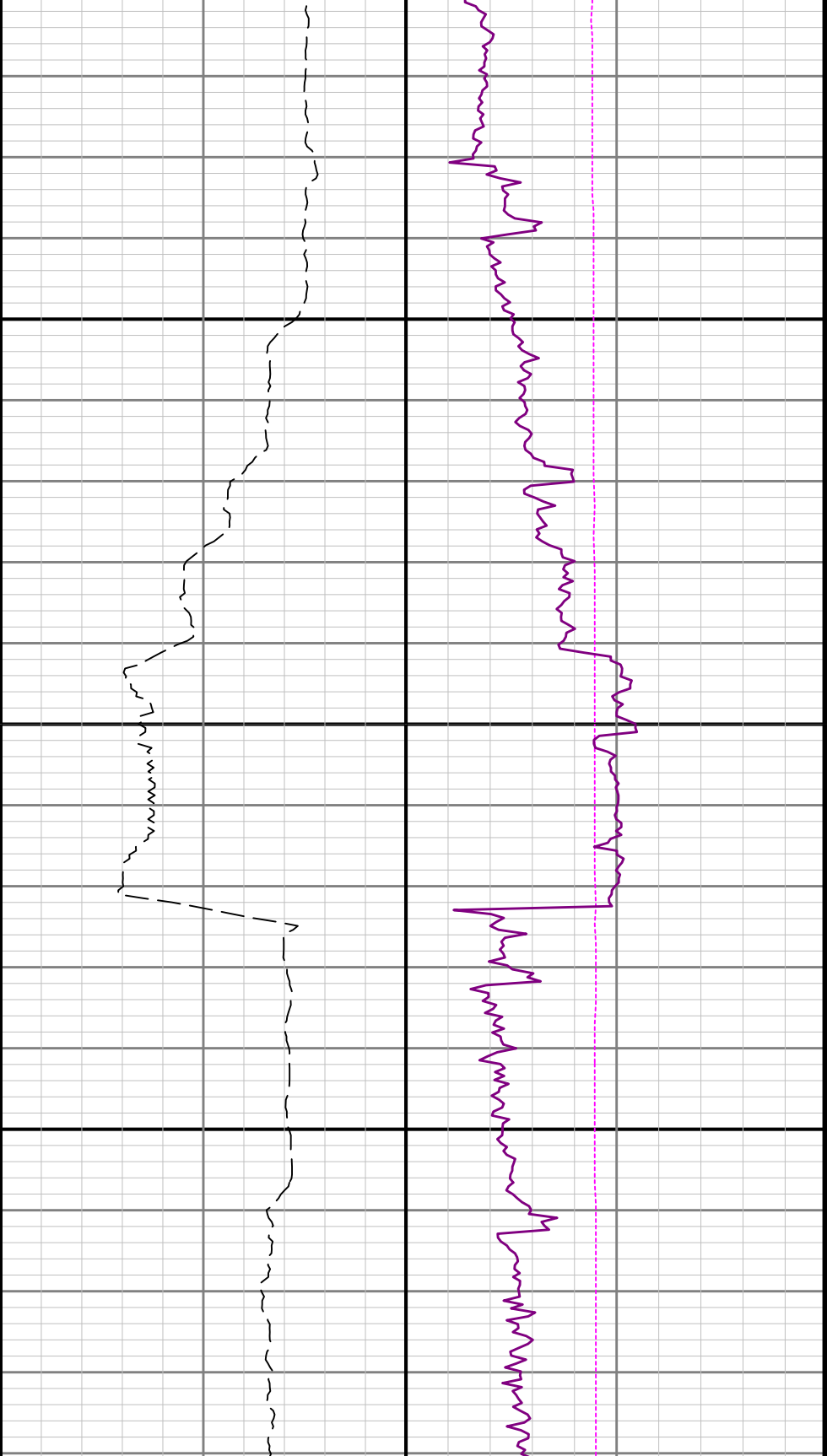
2200

230



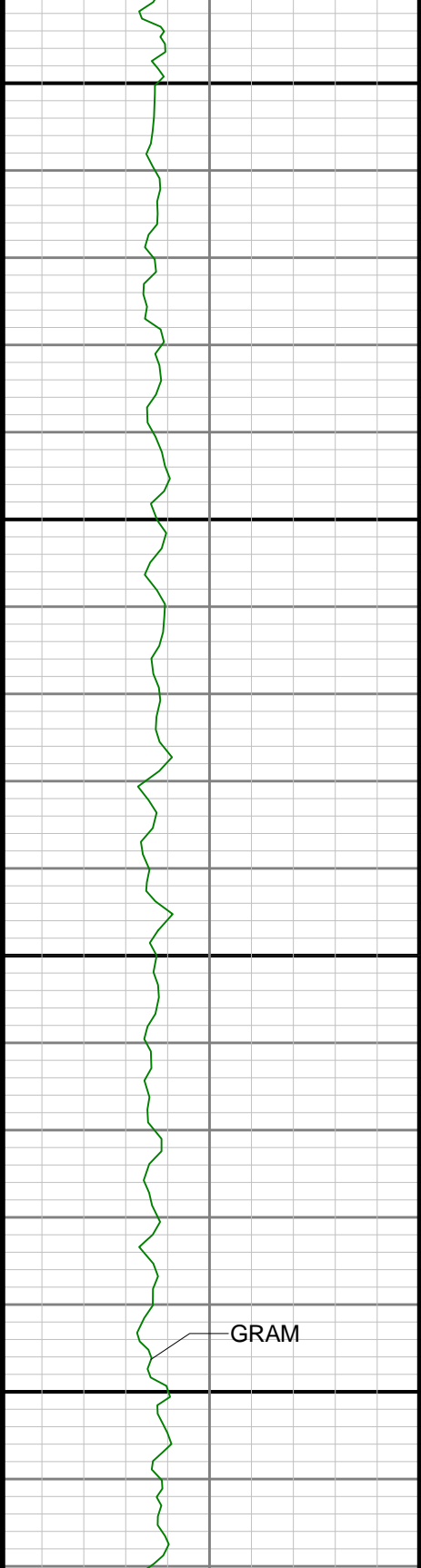






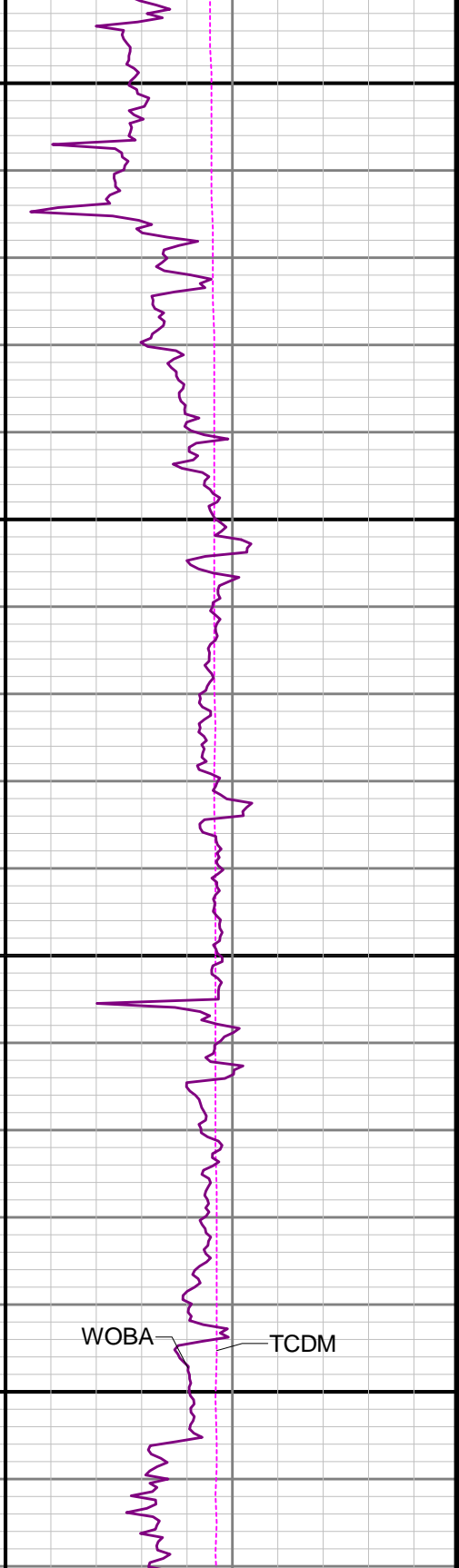
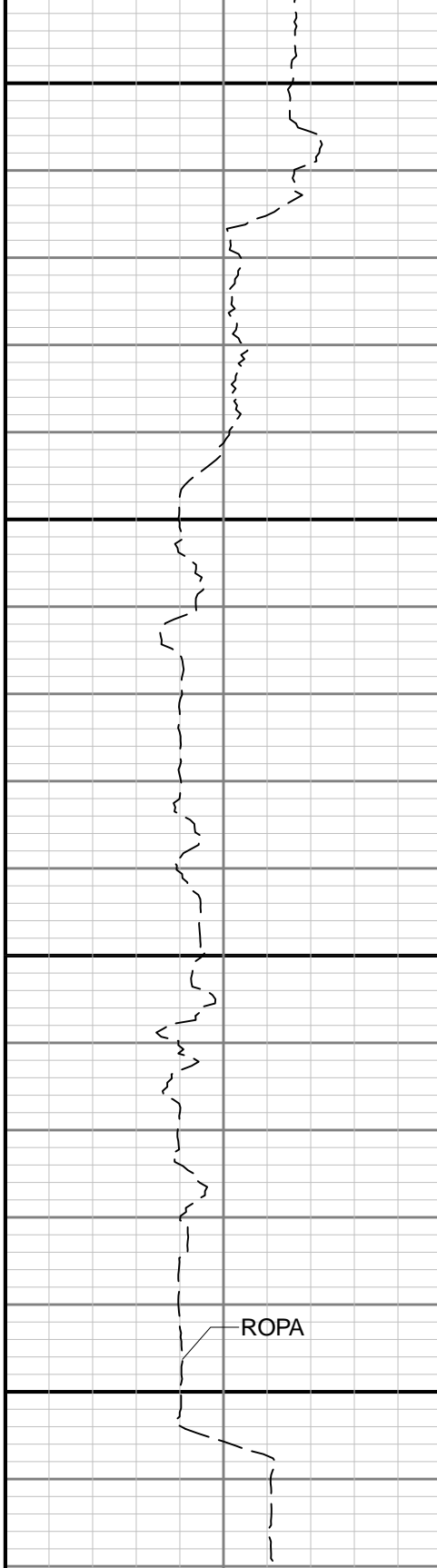
2700

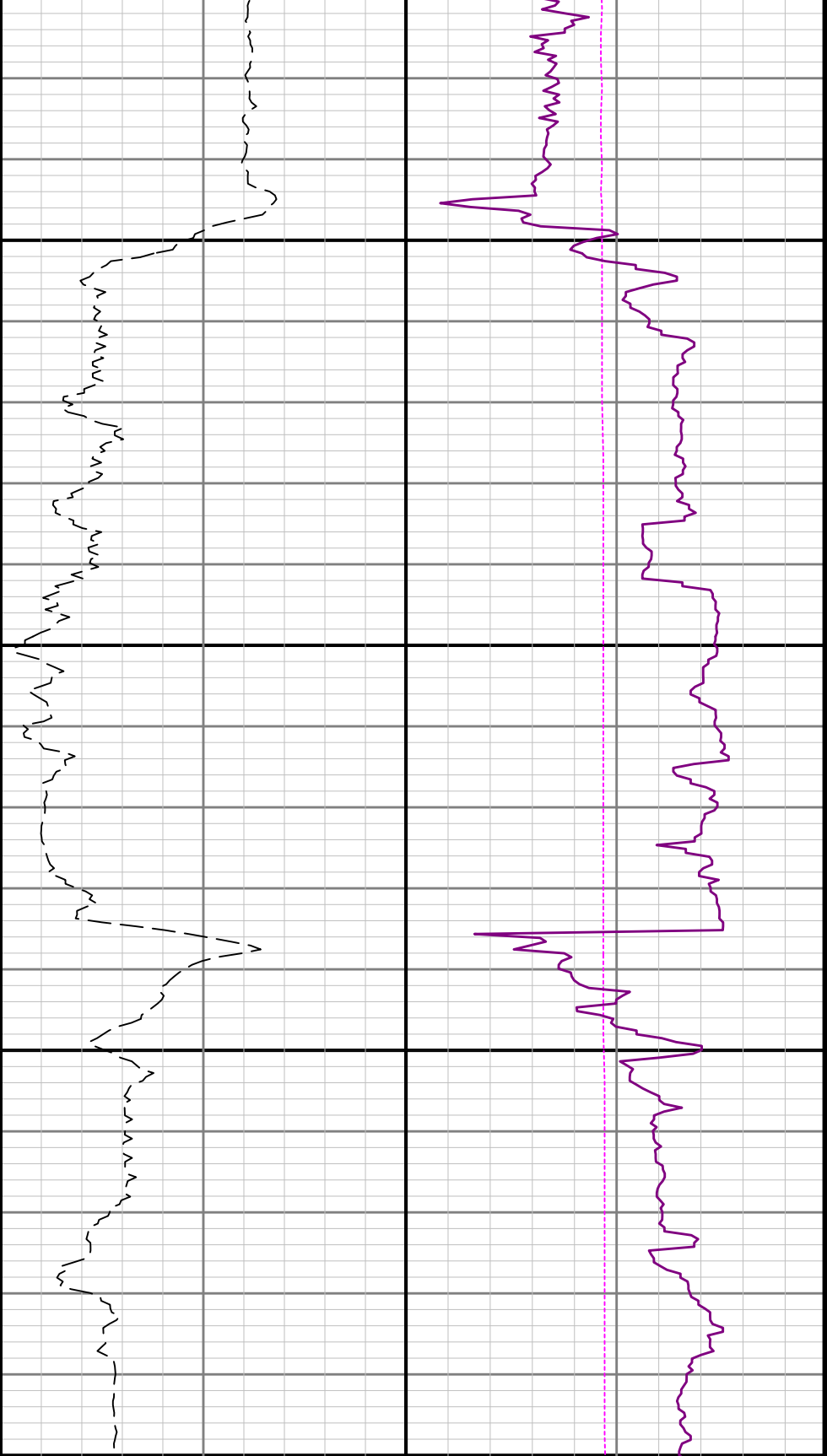
2800



2900

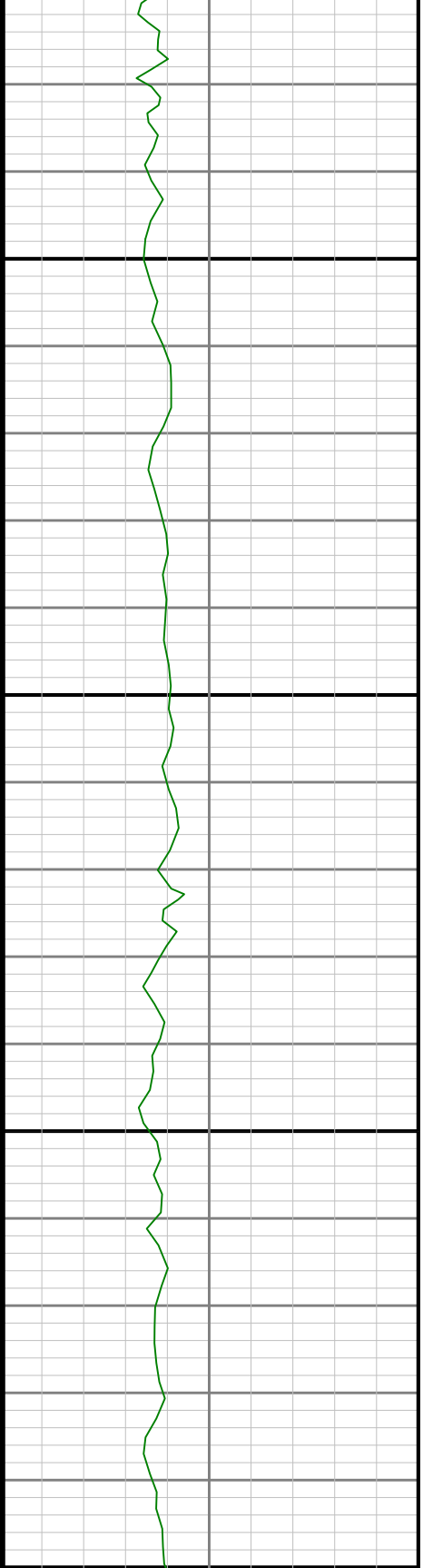
3000

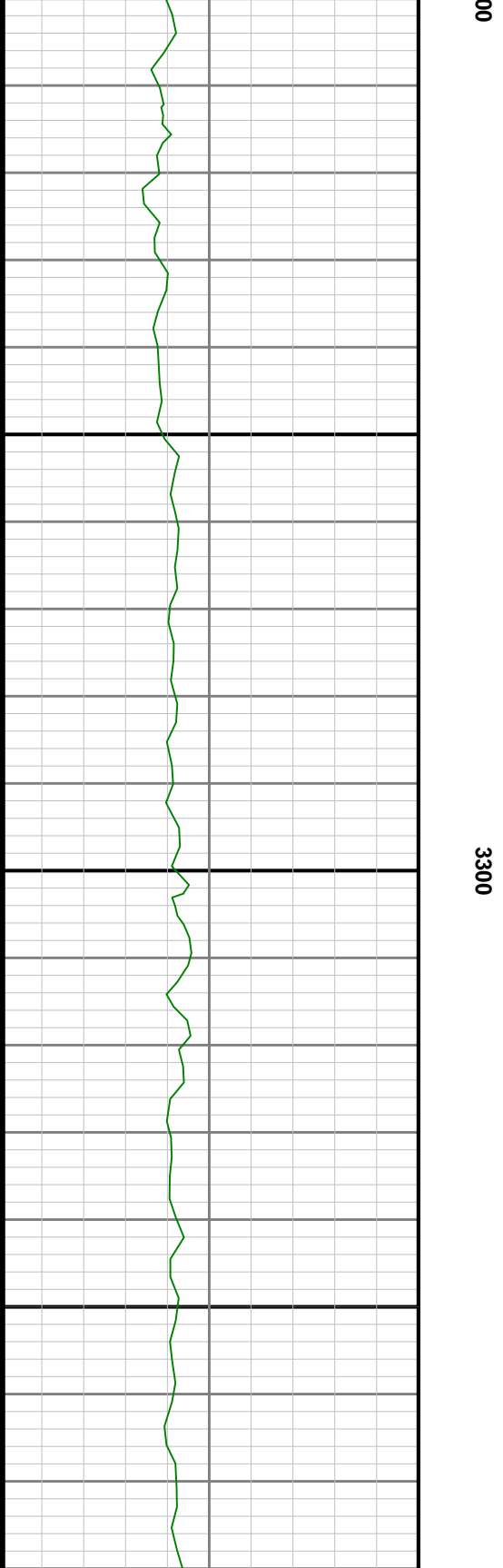
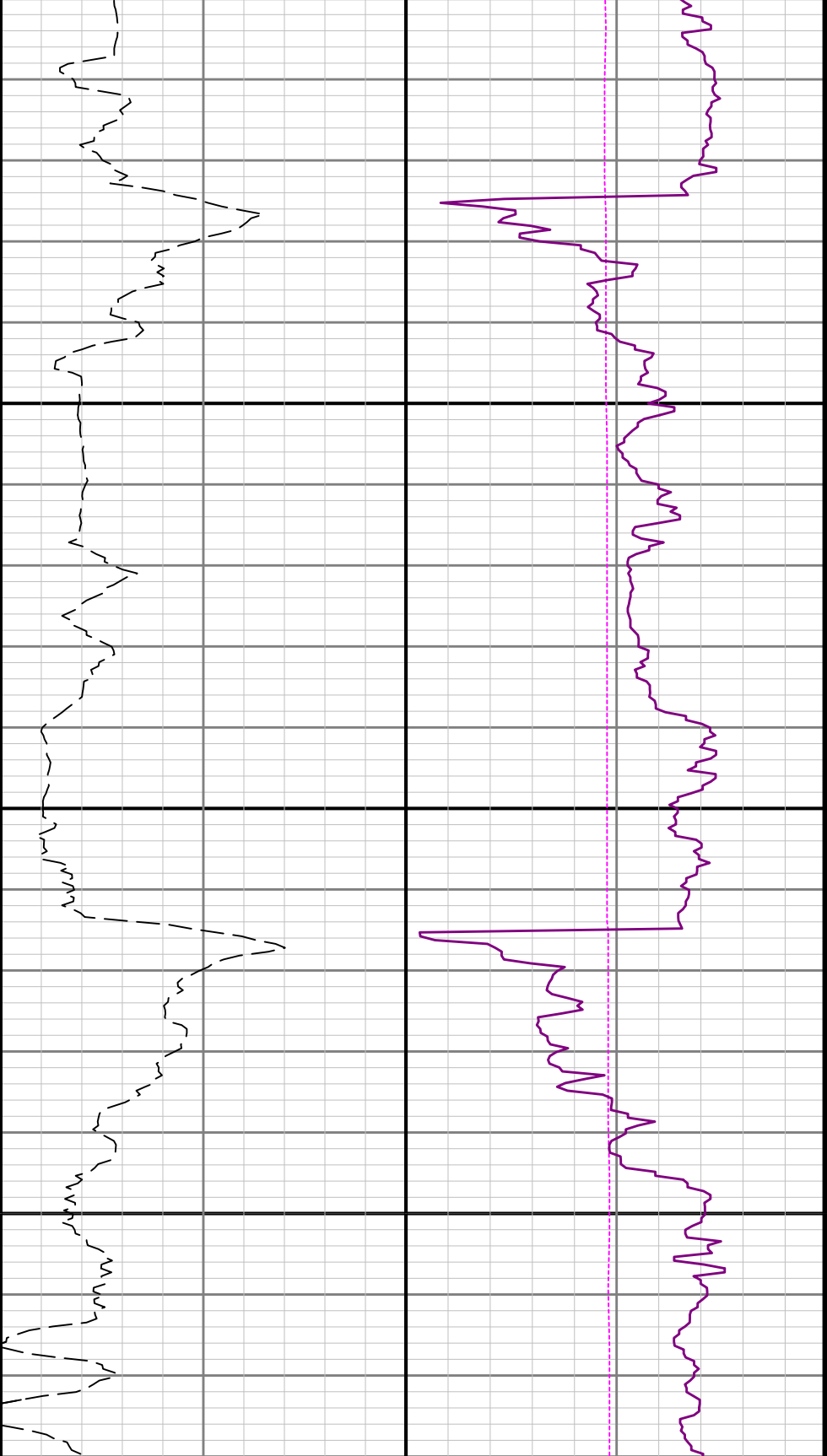


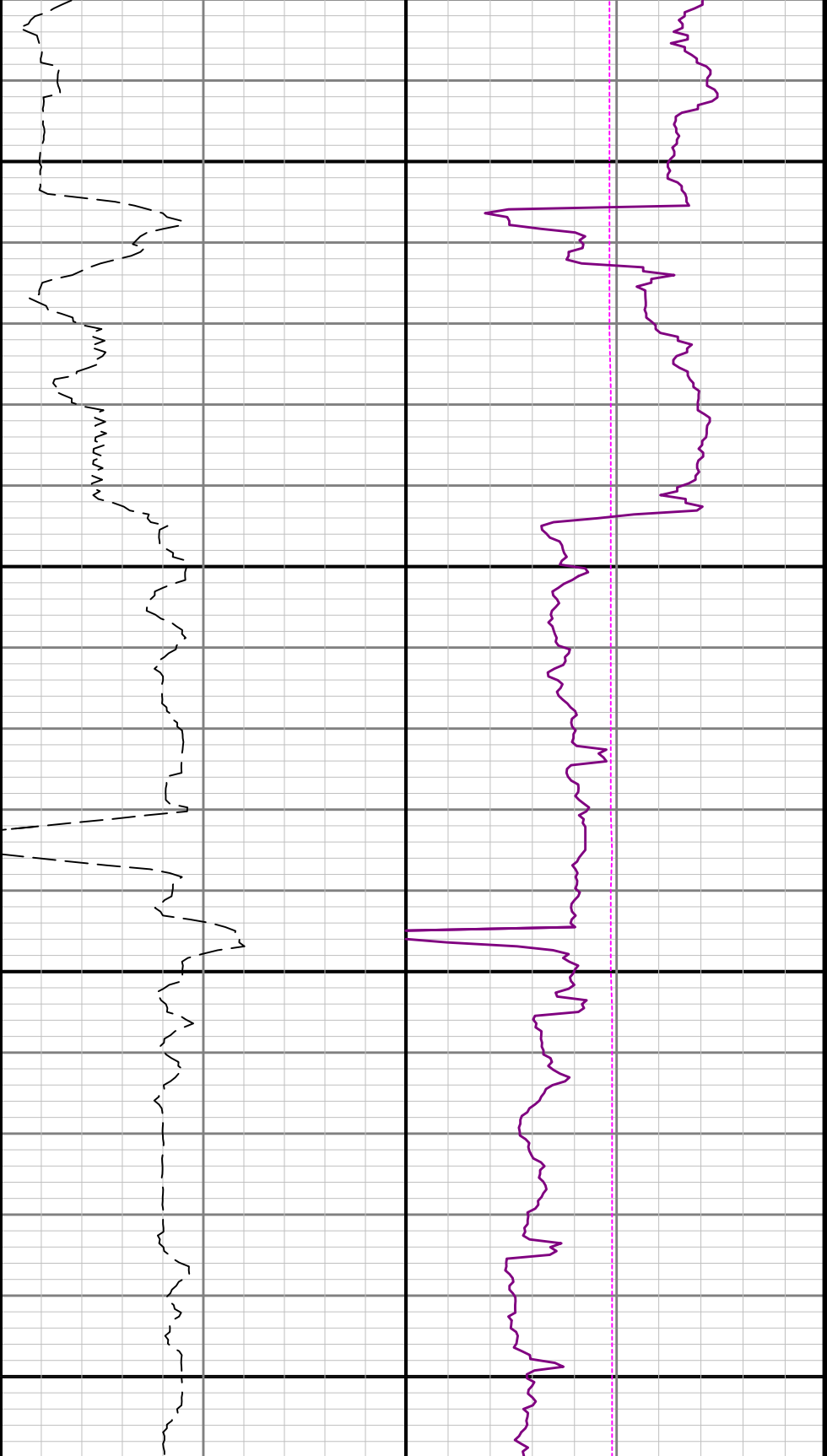


3100

32

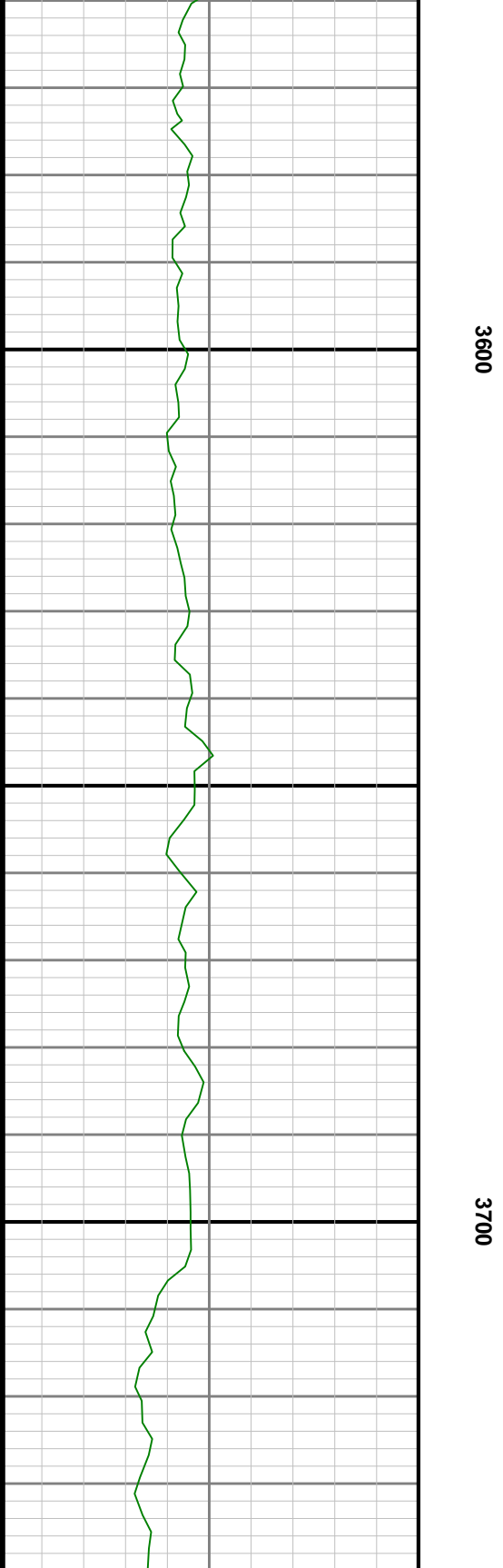
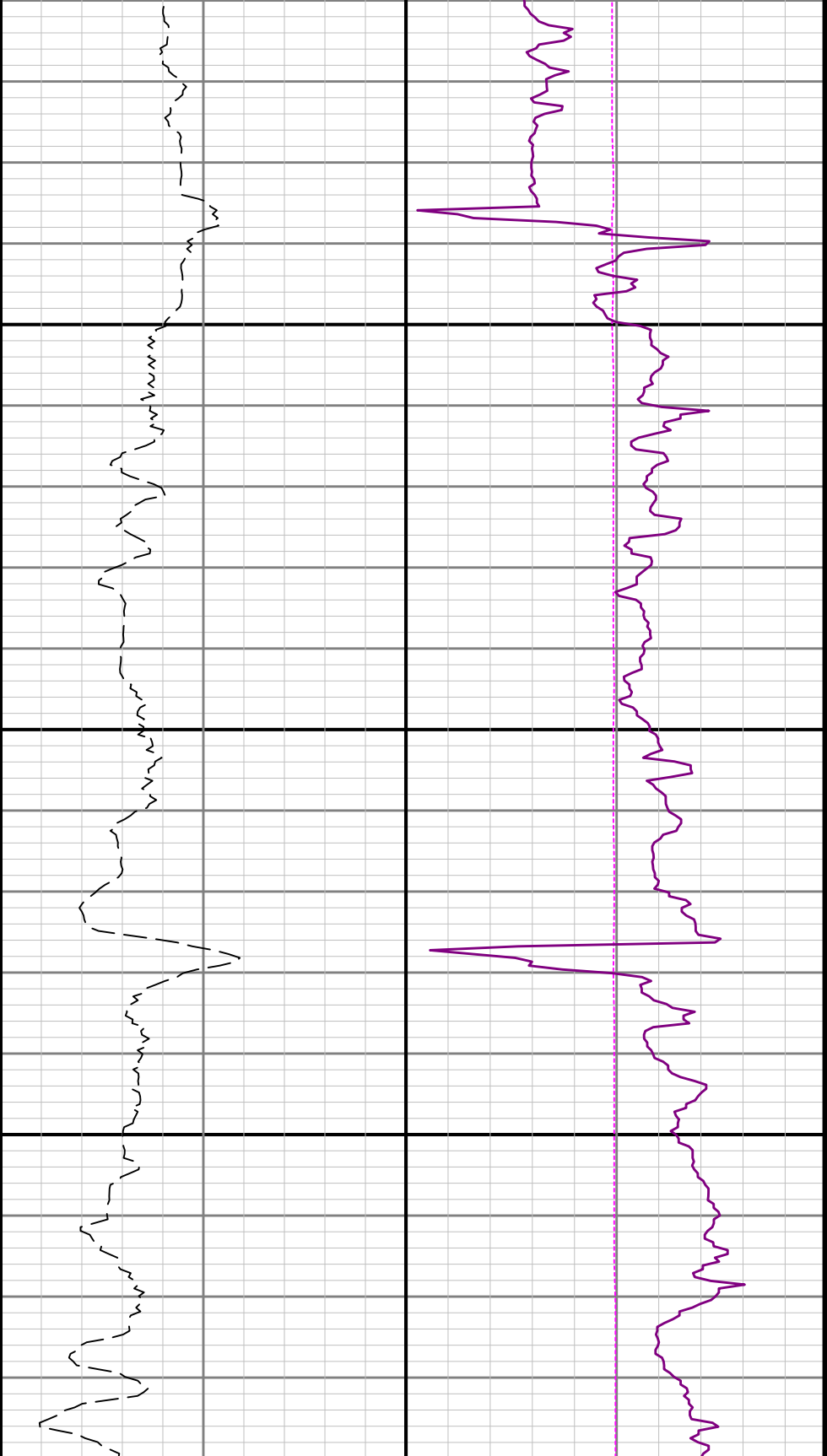


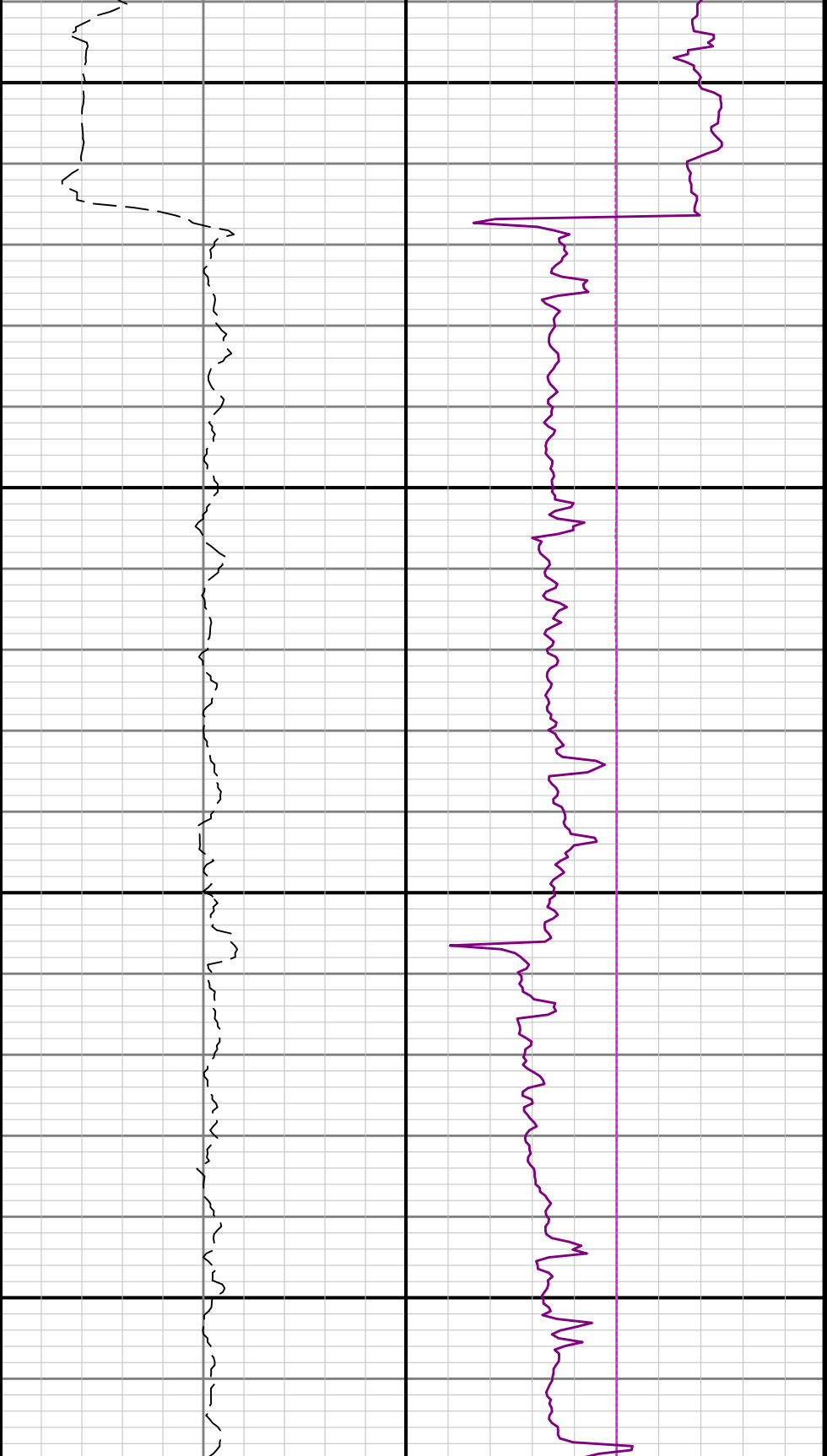




3400

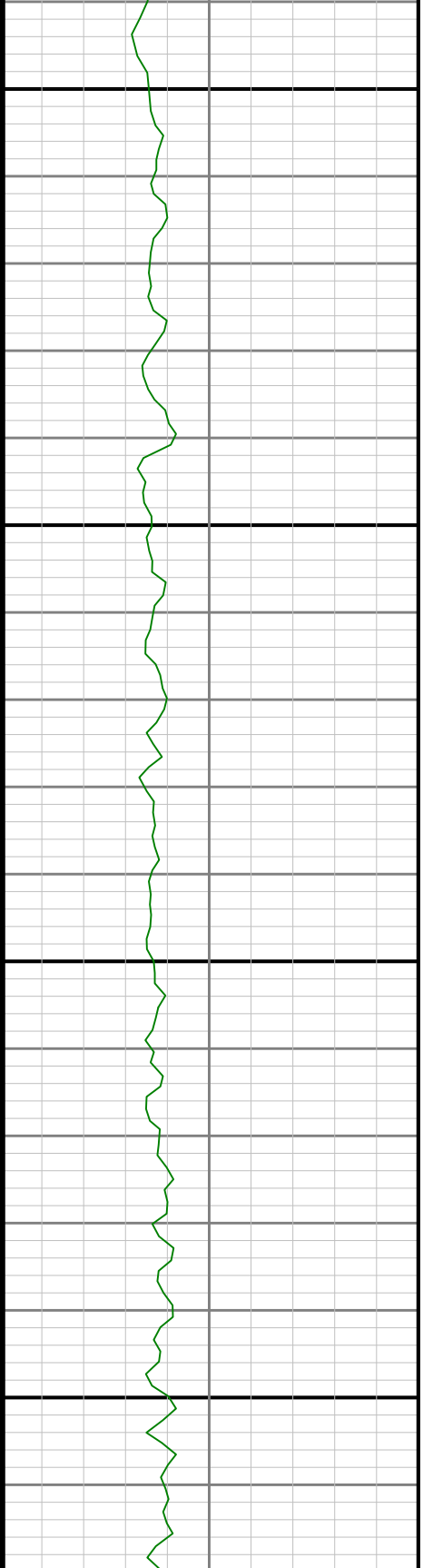
3500

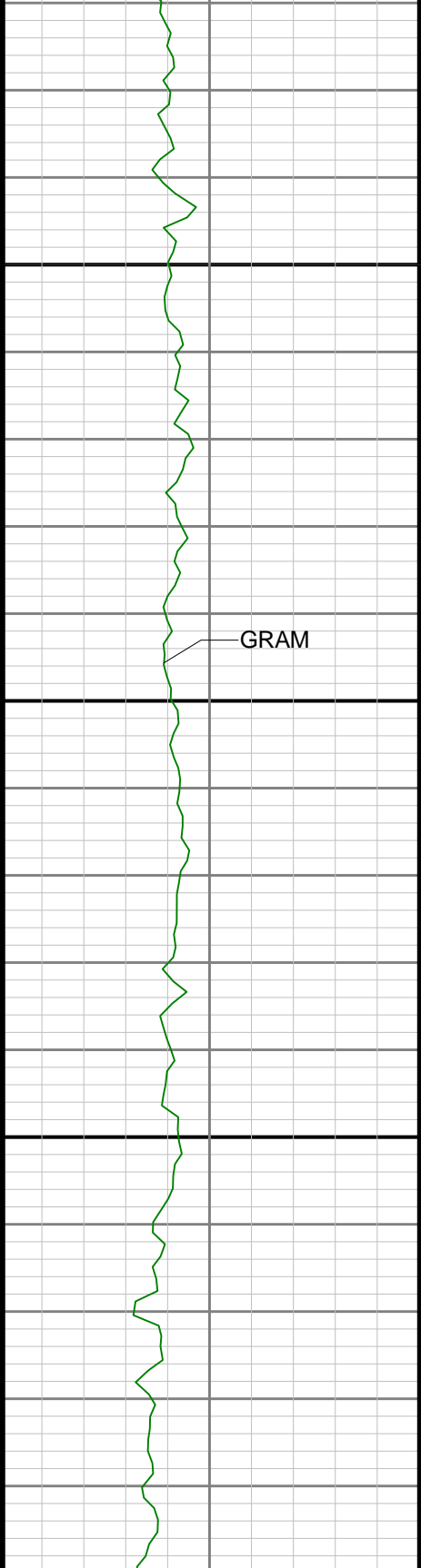




3800

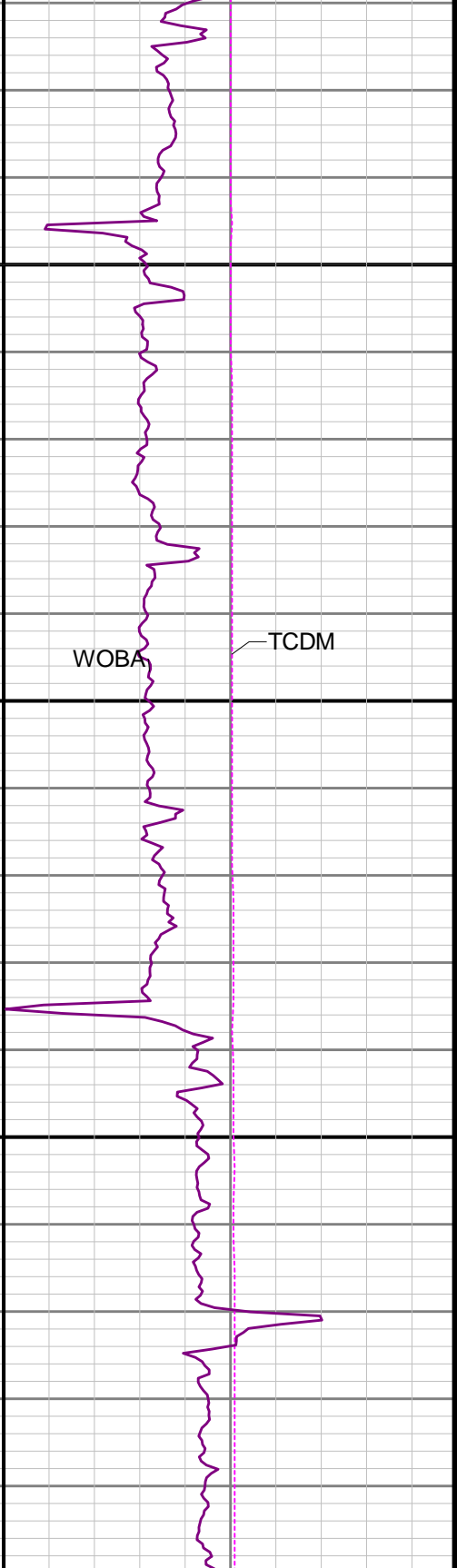
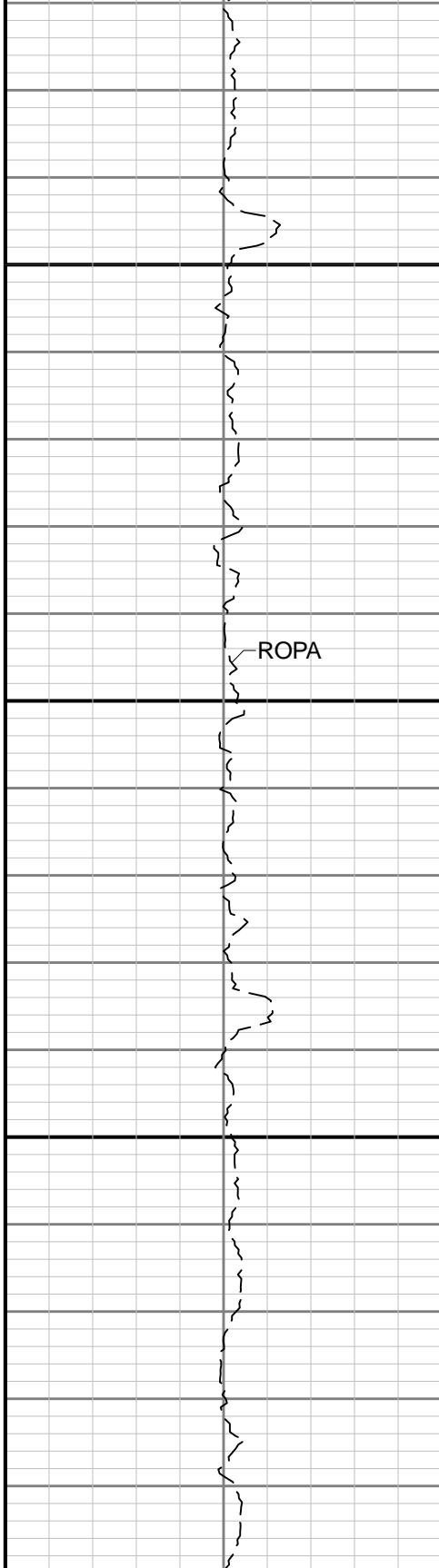
3900



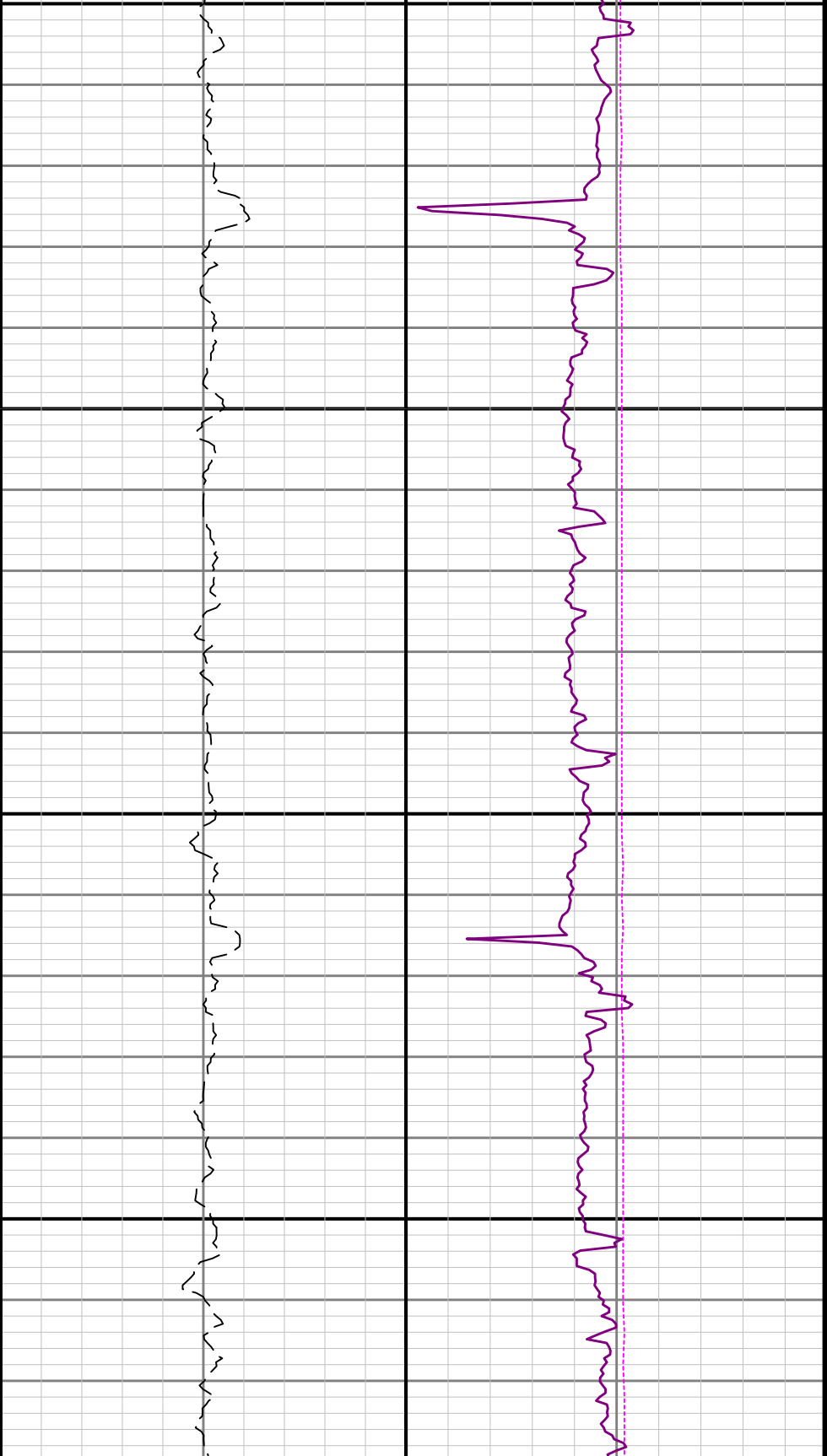


4000

41

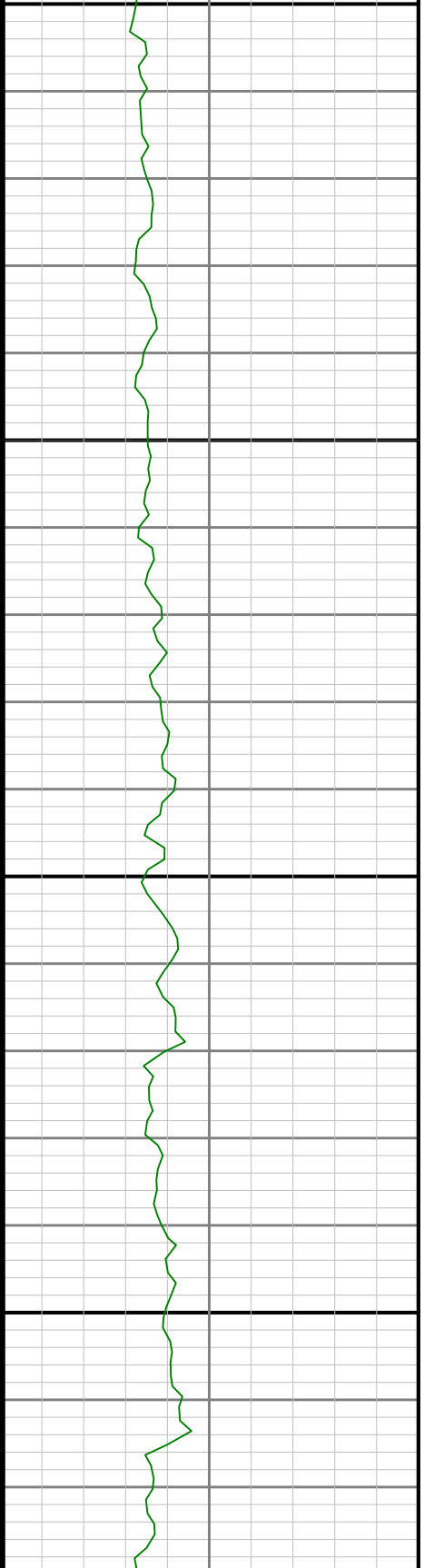


TCDM



00

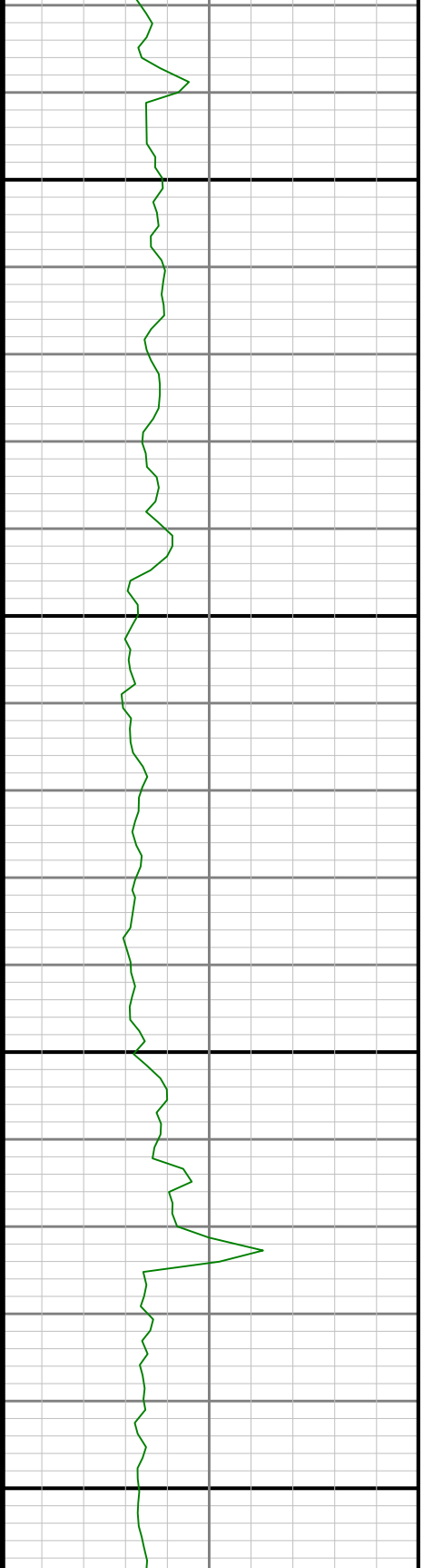
4200

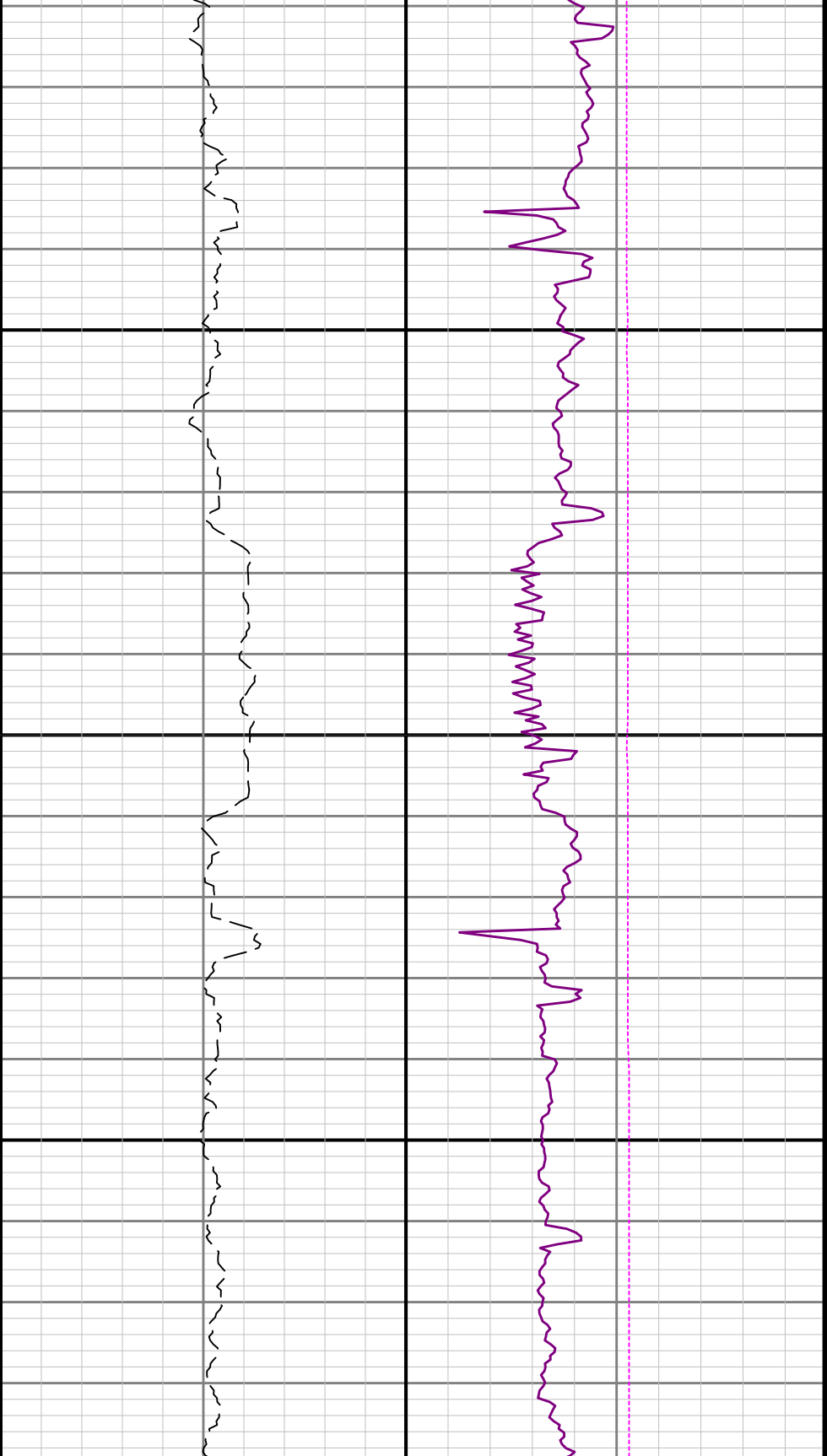




4300

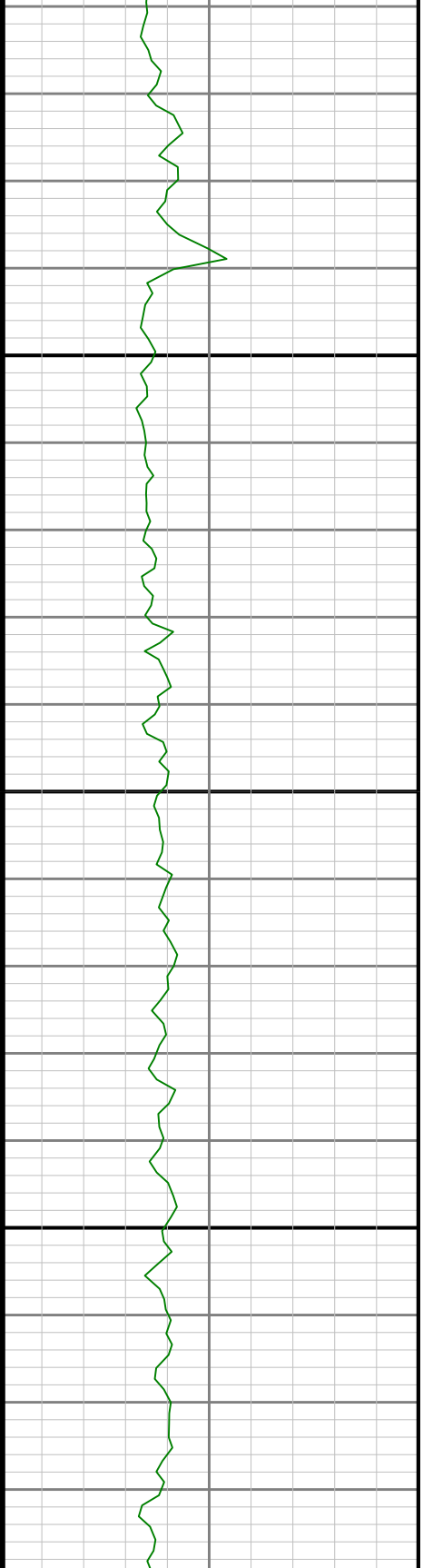
4400

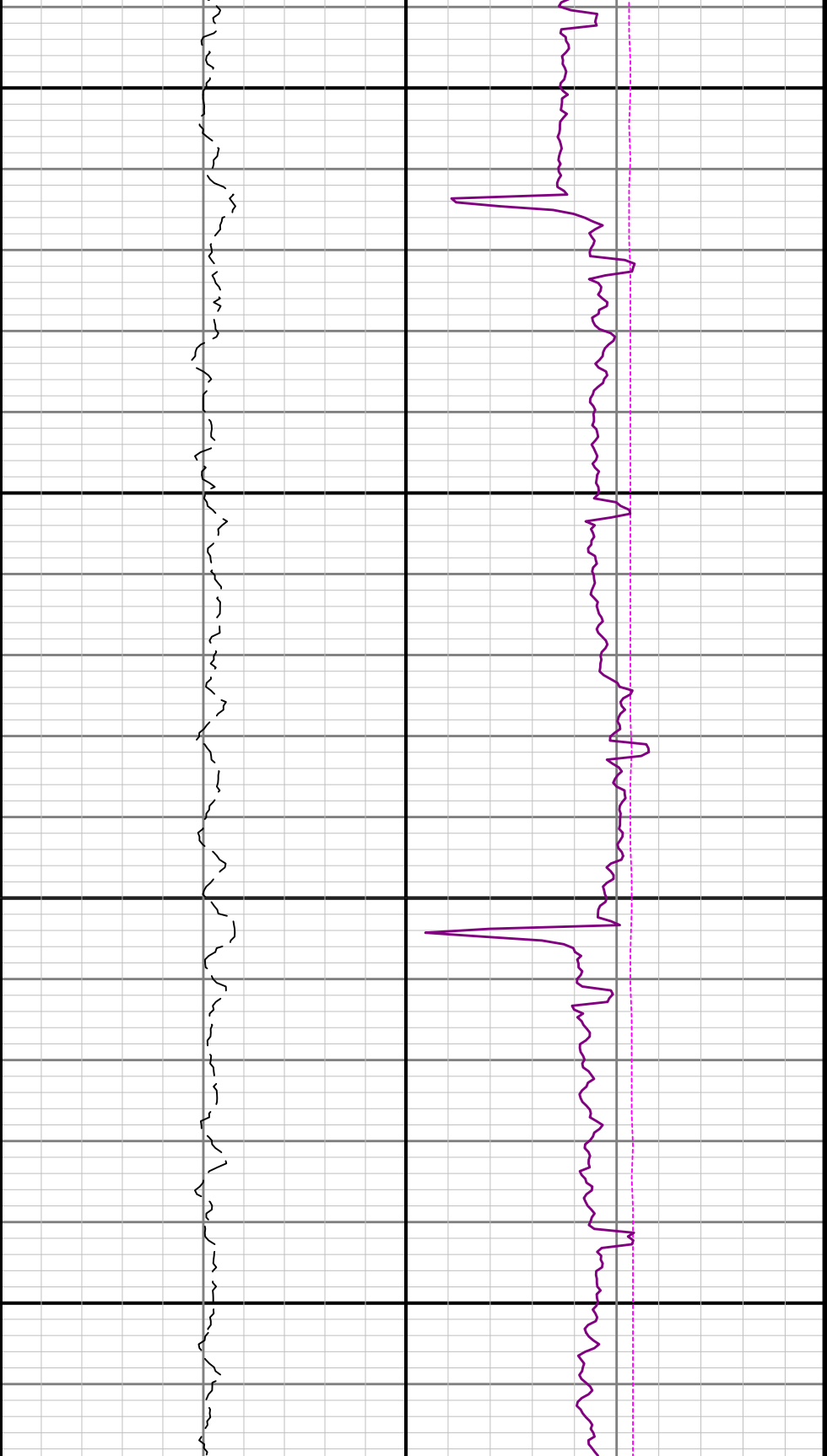




4500

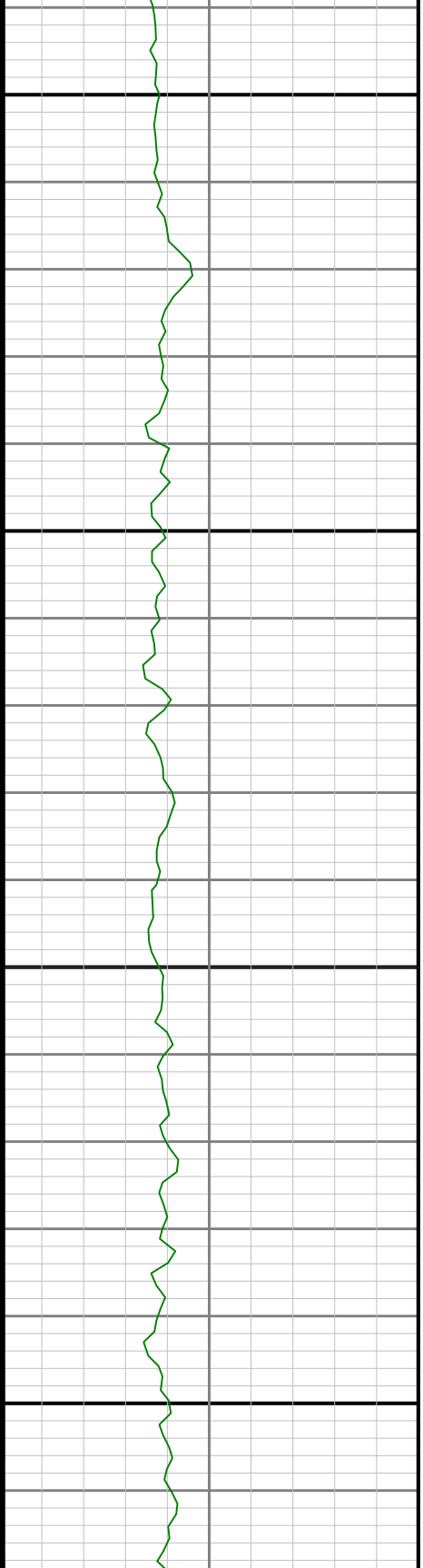
4600

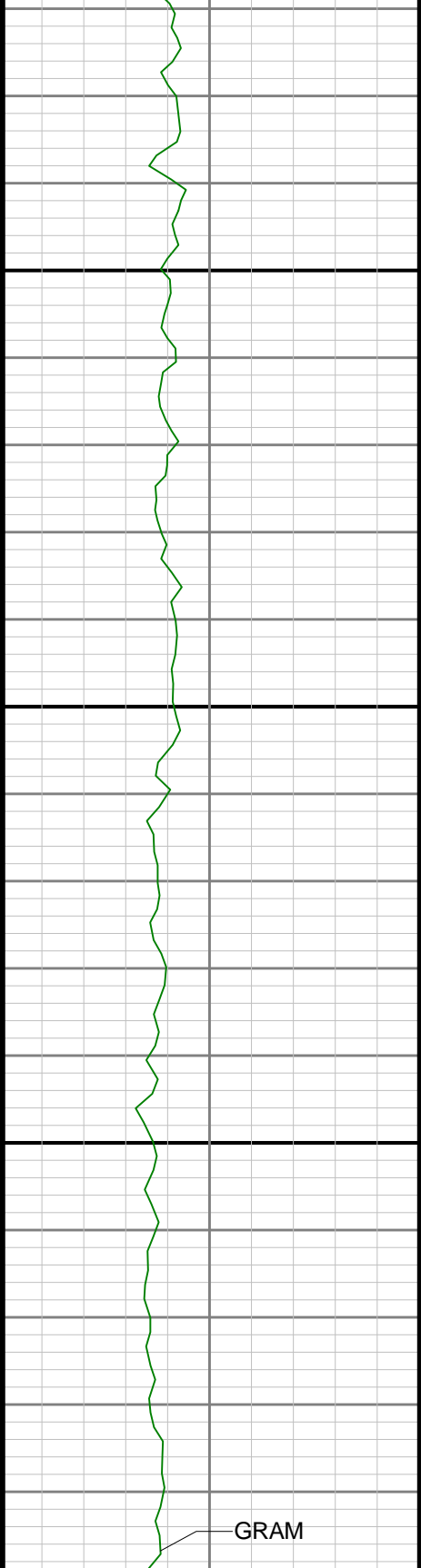




4700

4800



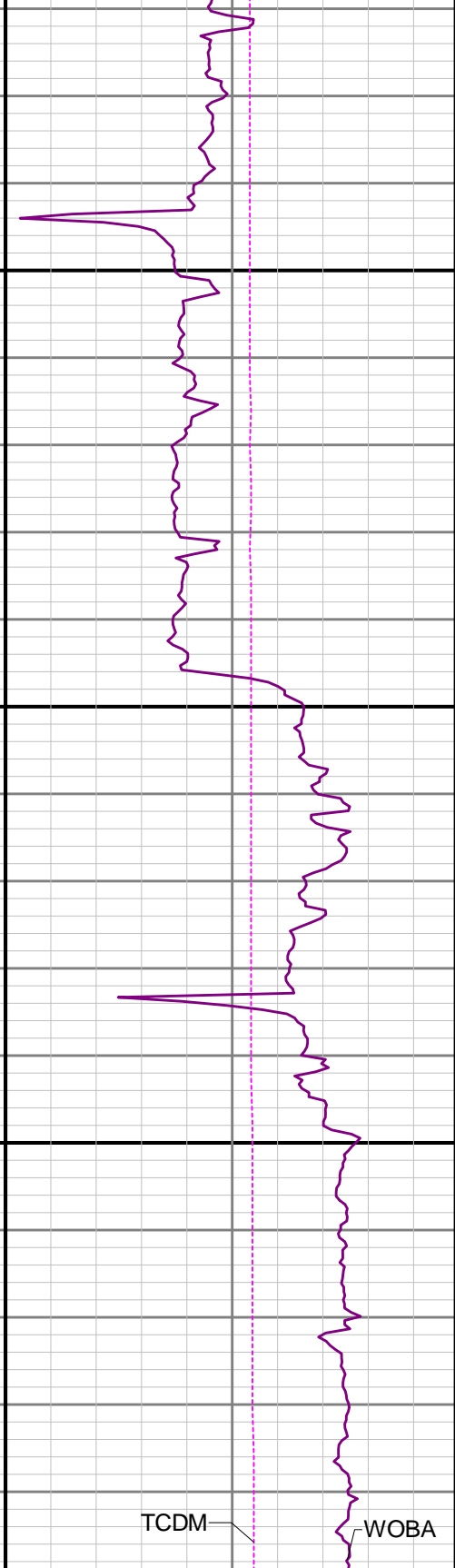


4900

5

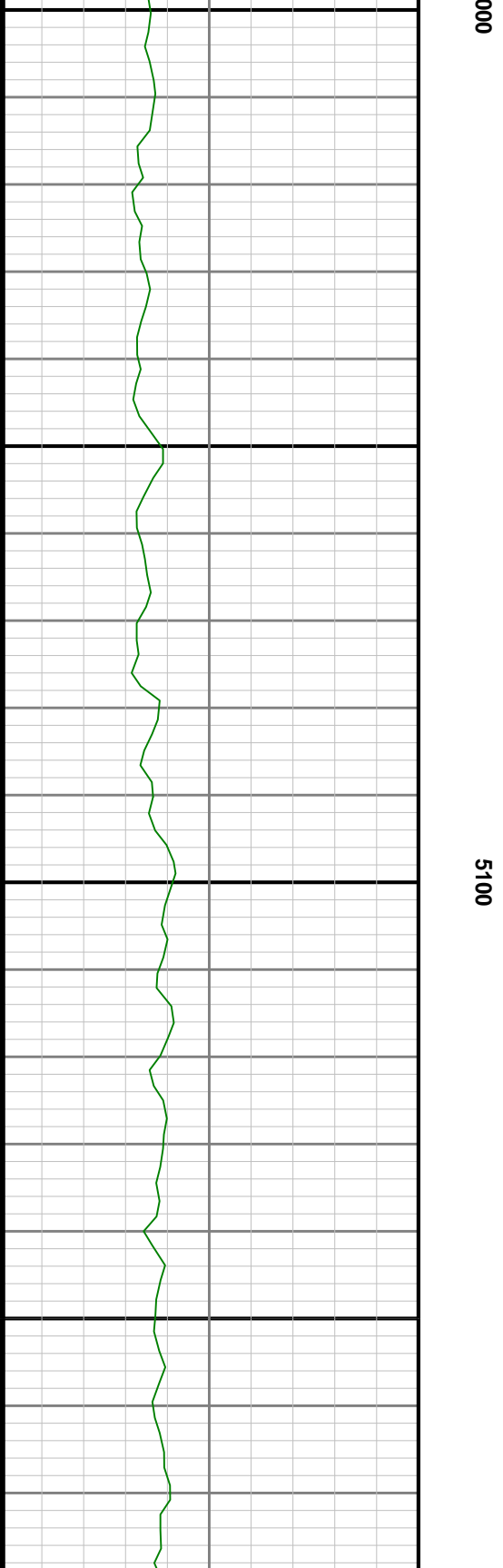
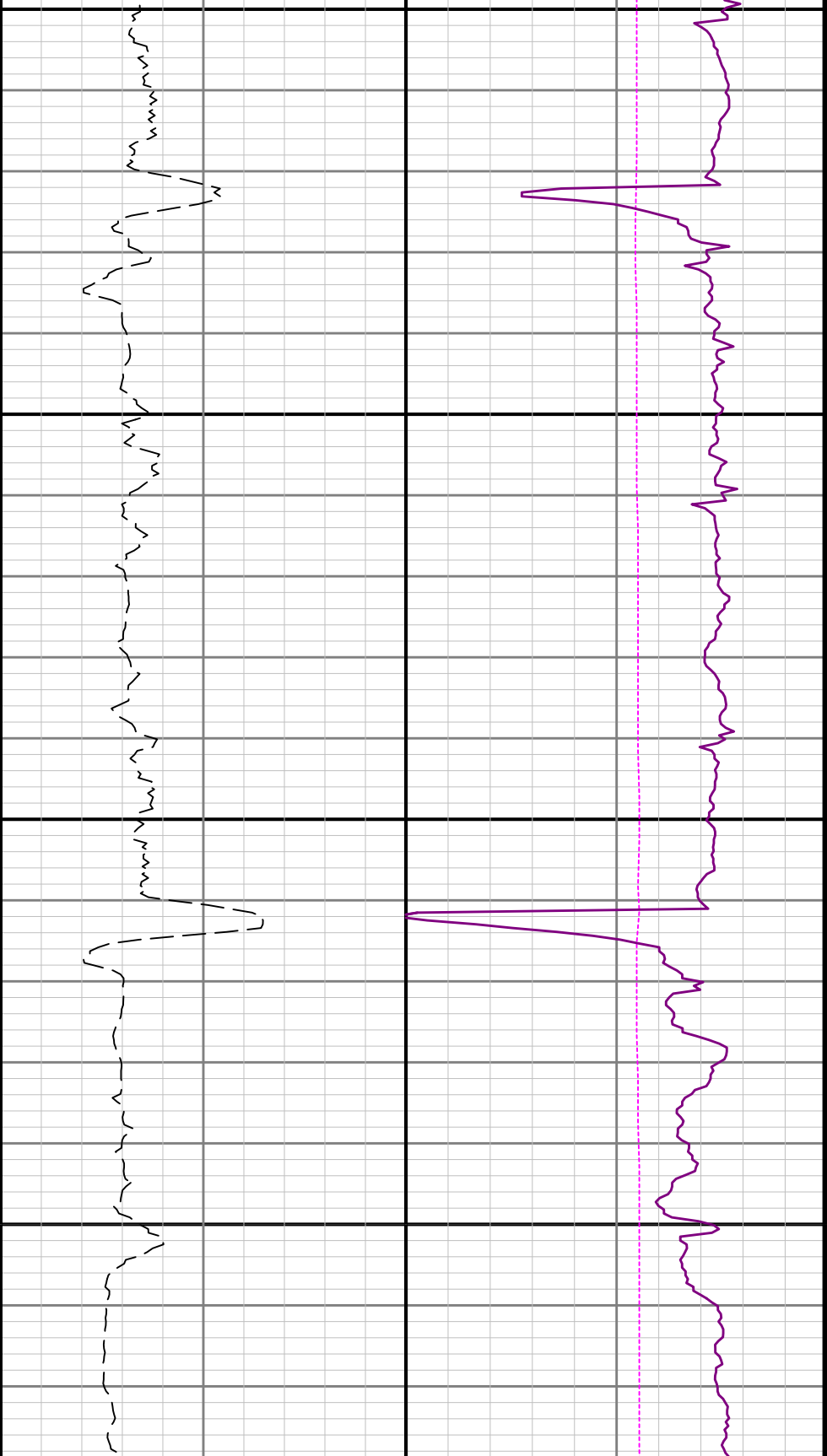


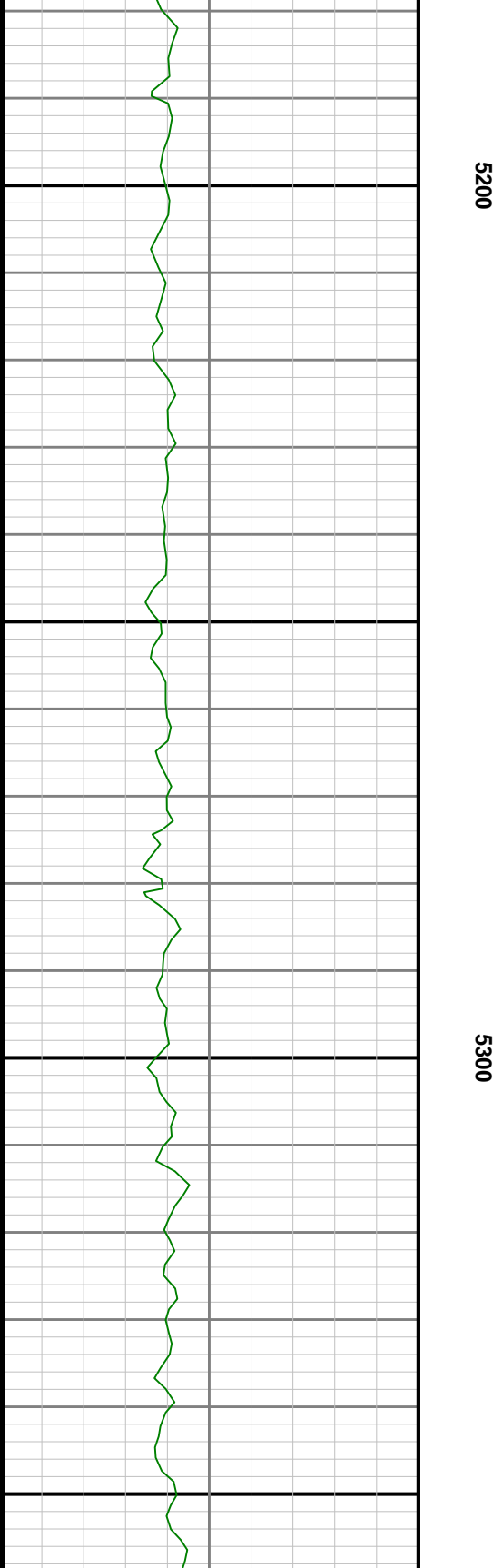
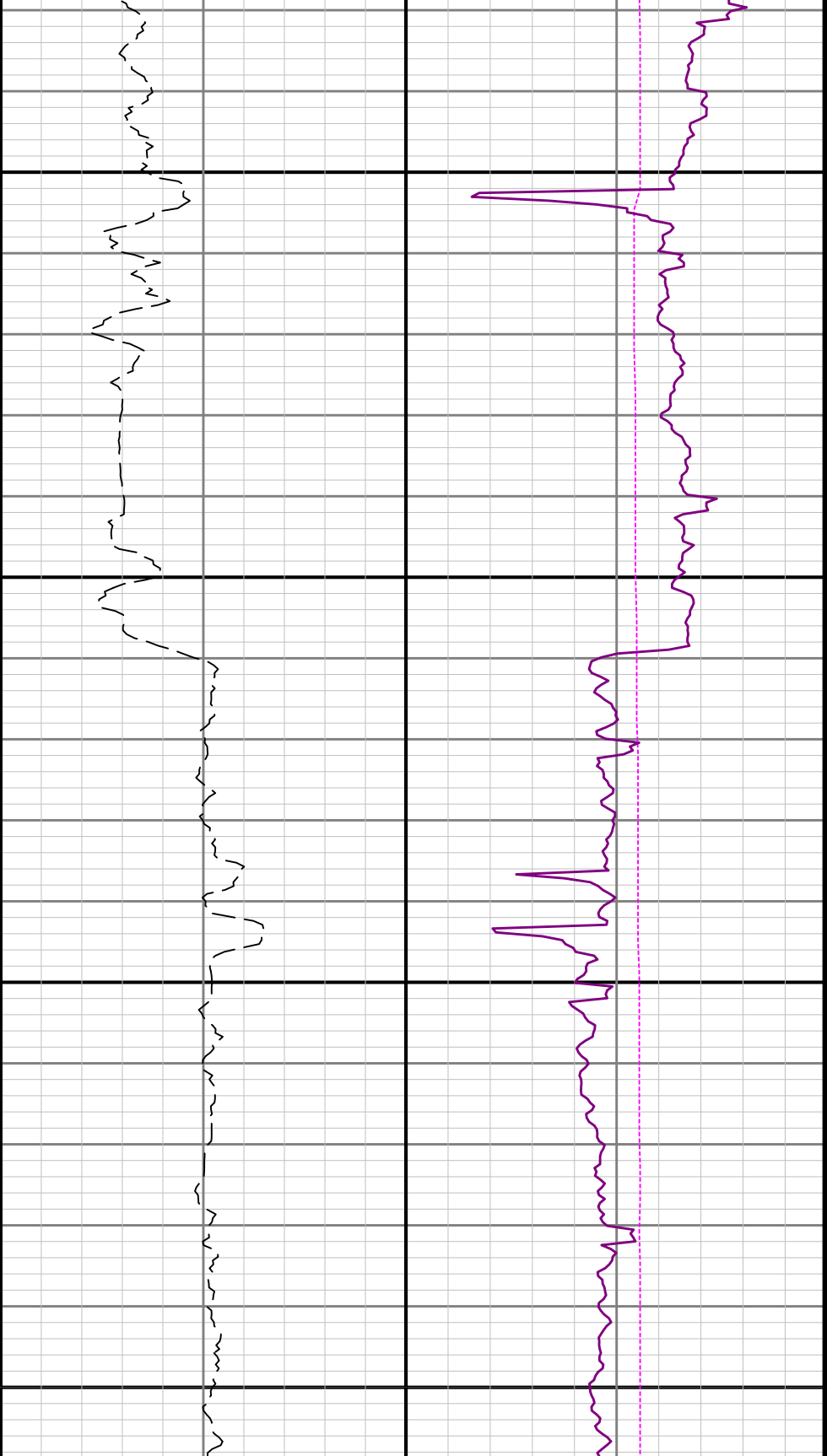
ROPA

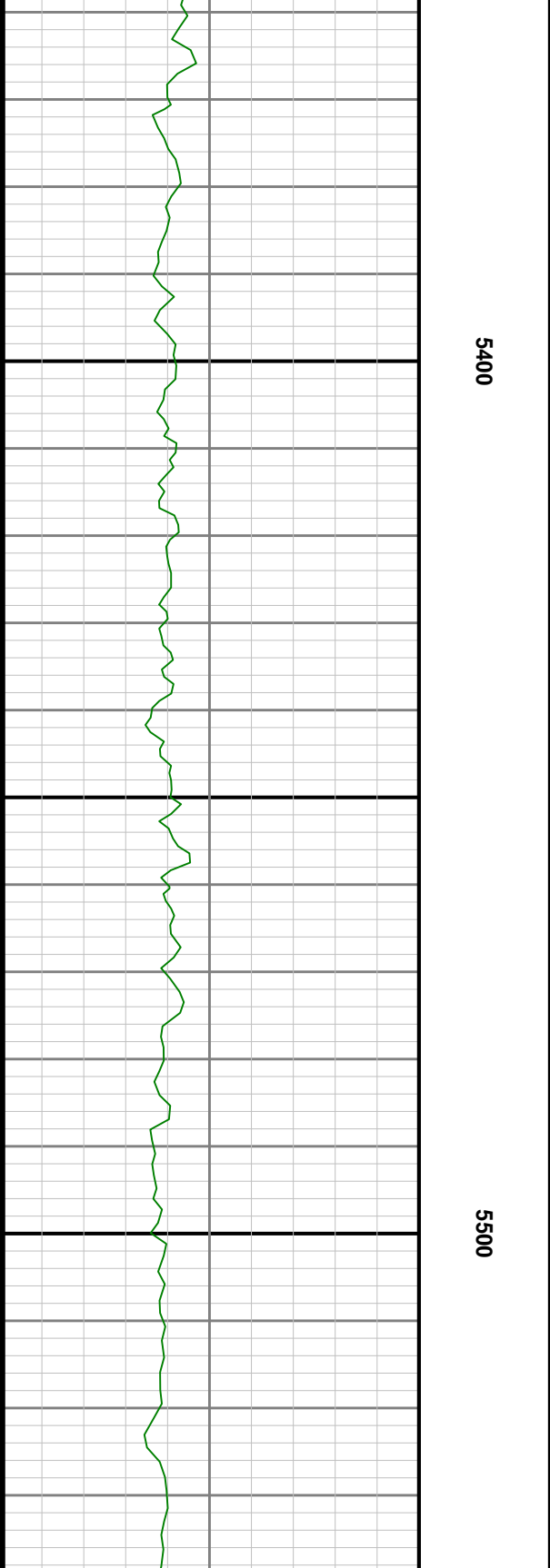
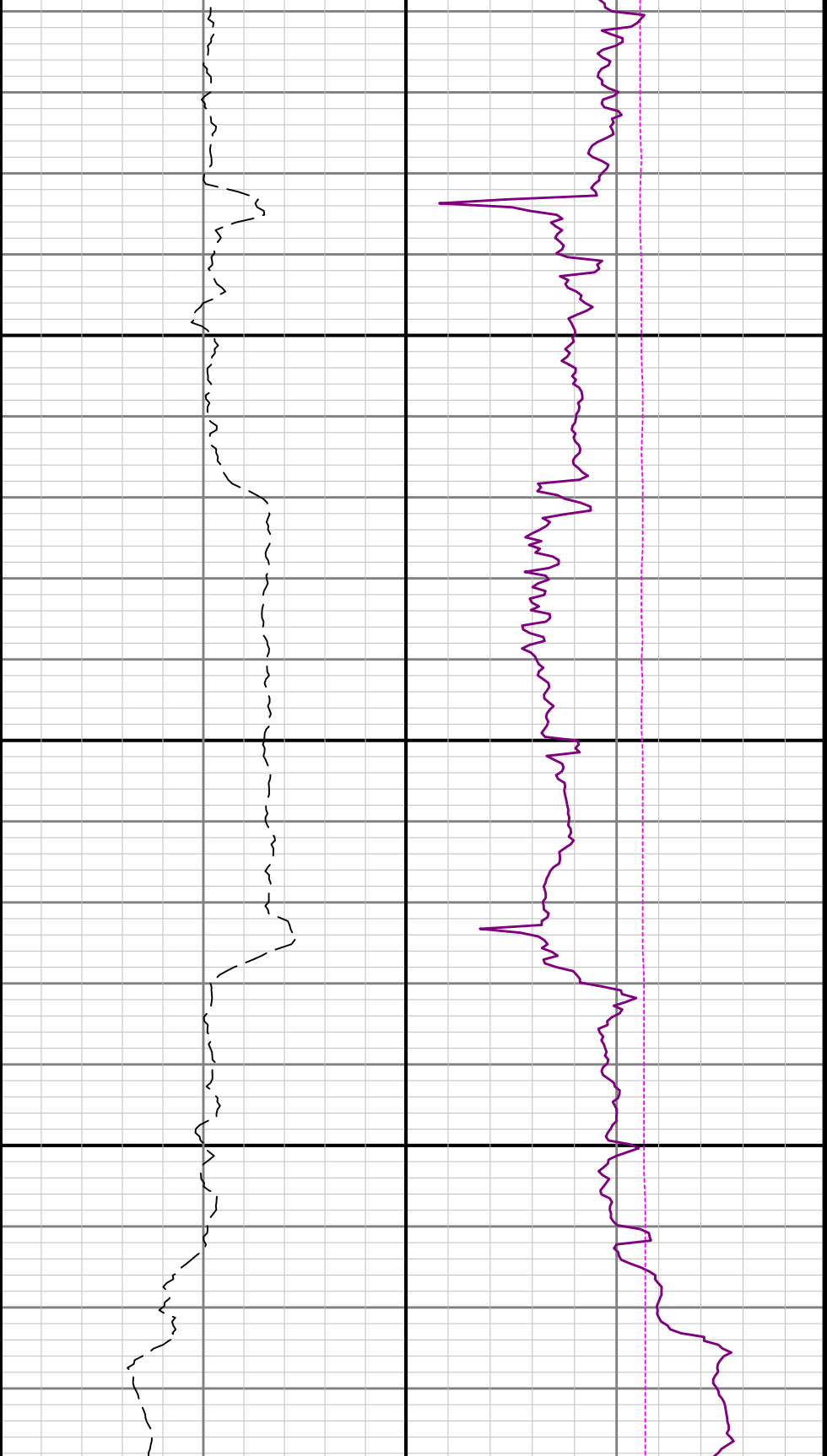


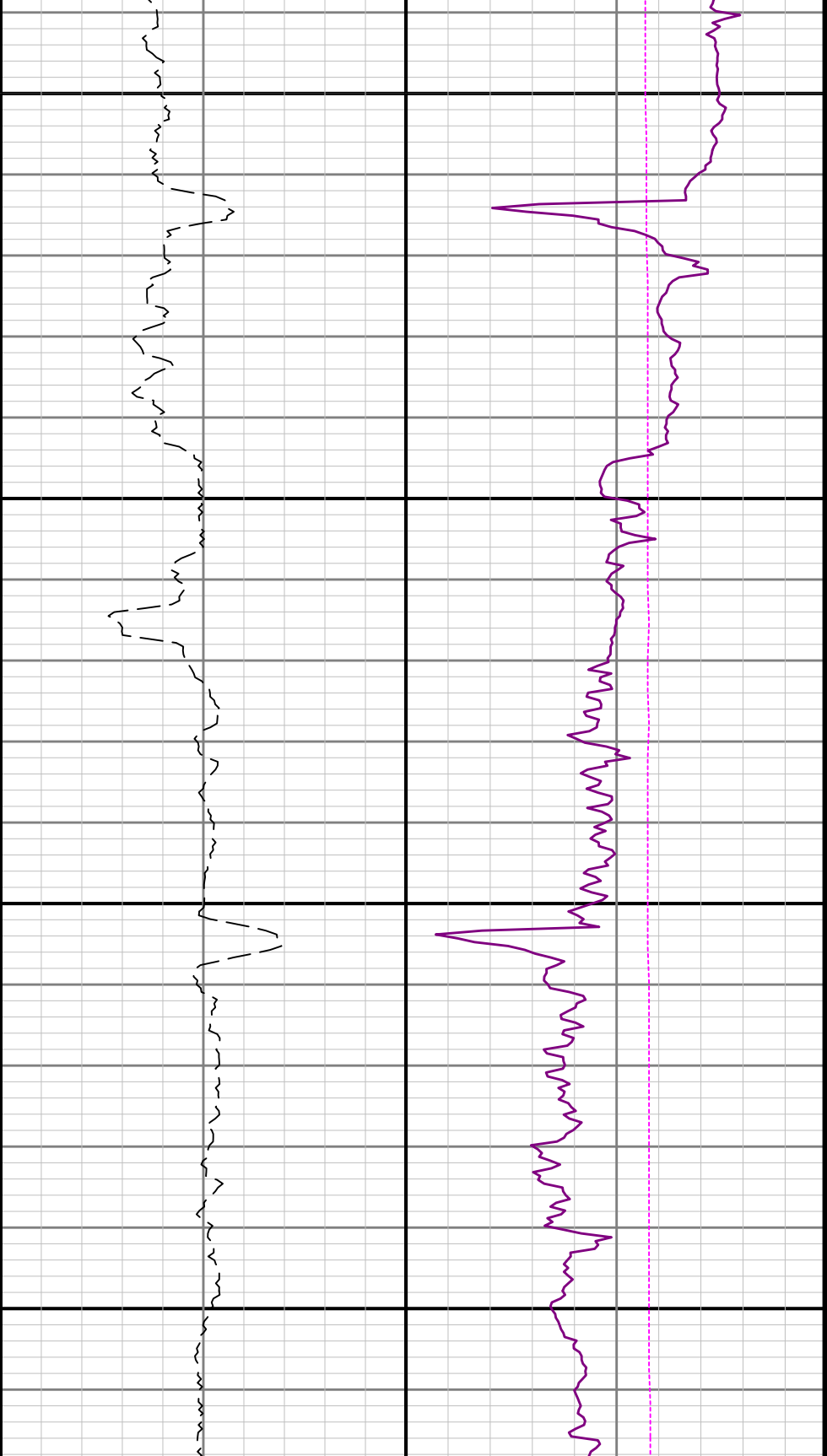
TCDM

WOBA



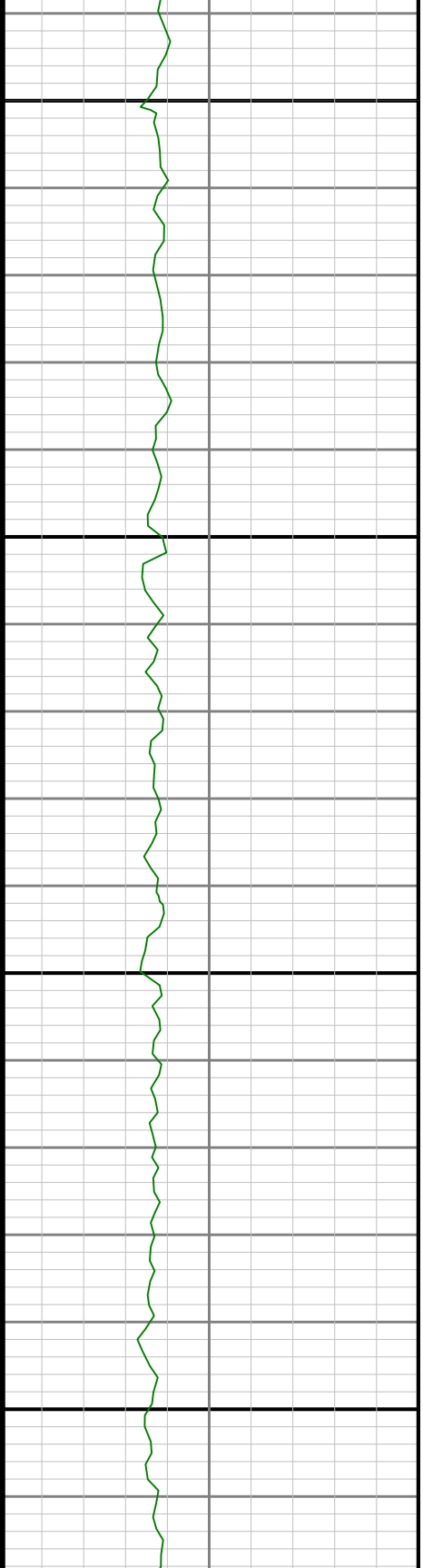


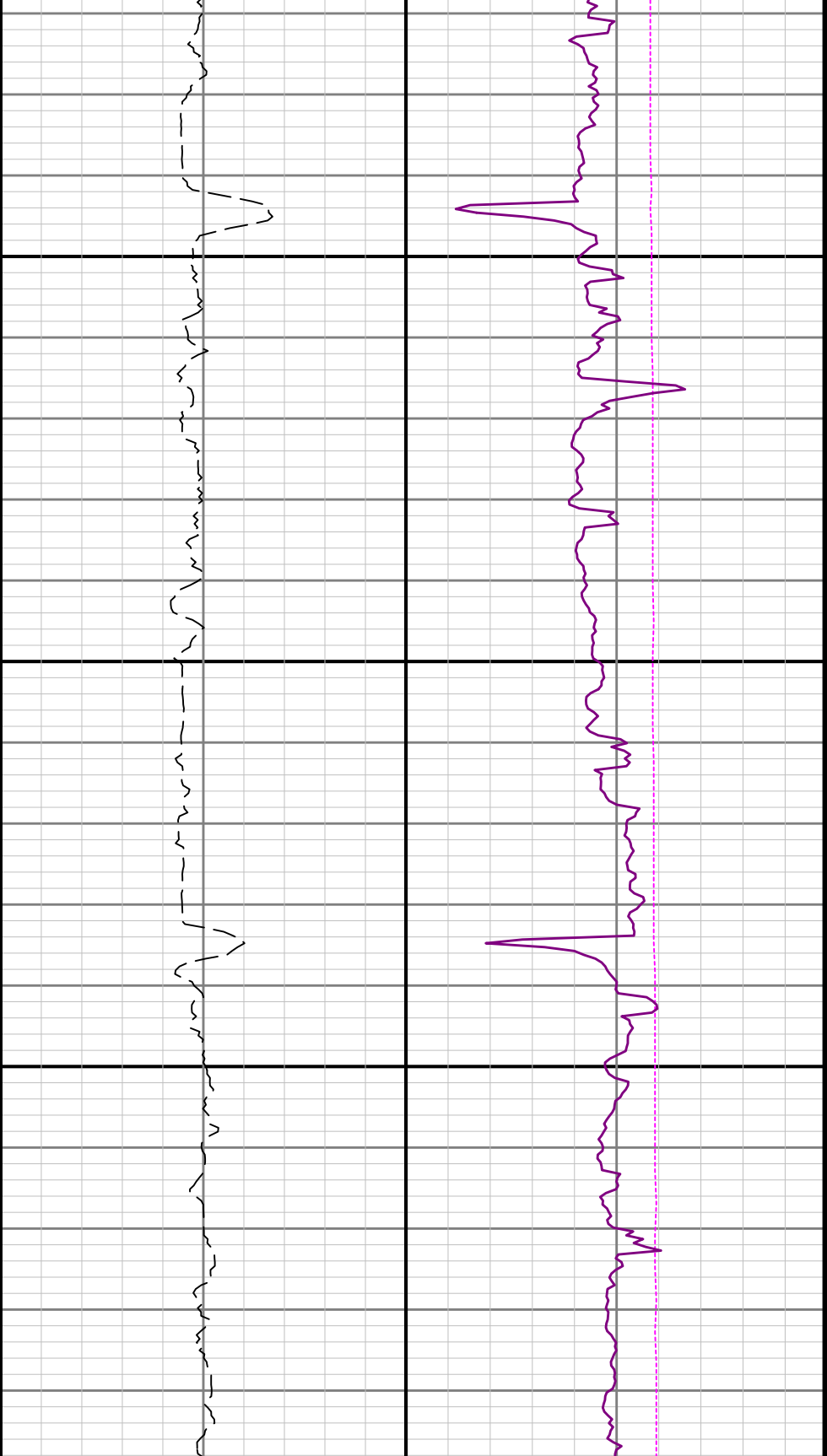




5600

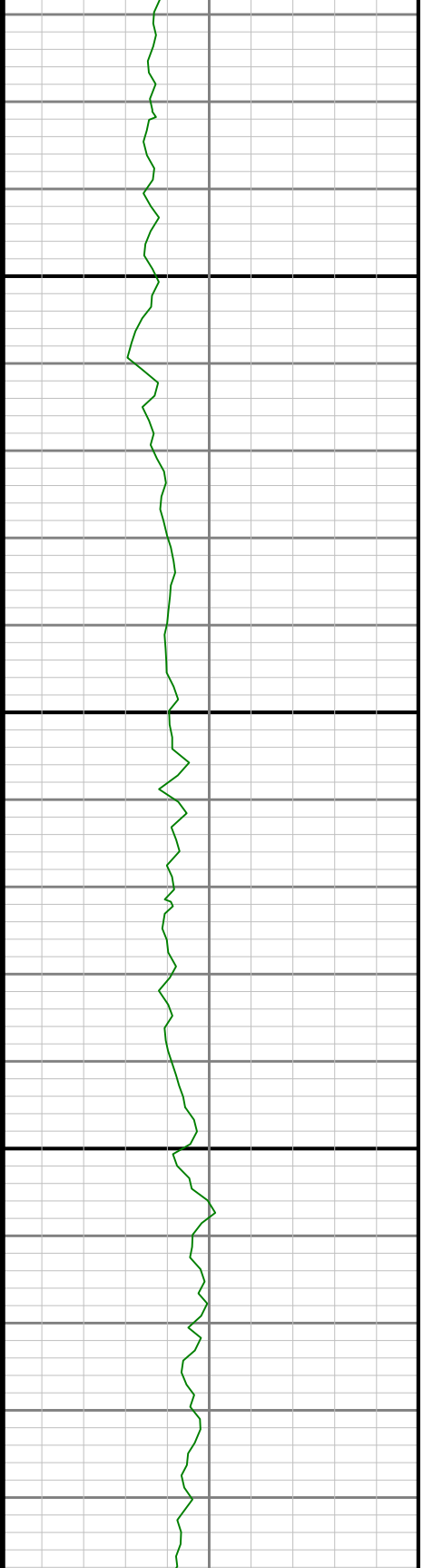
5700

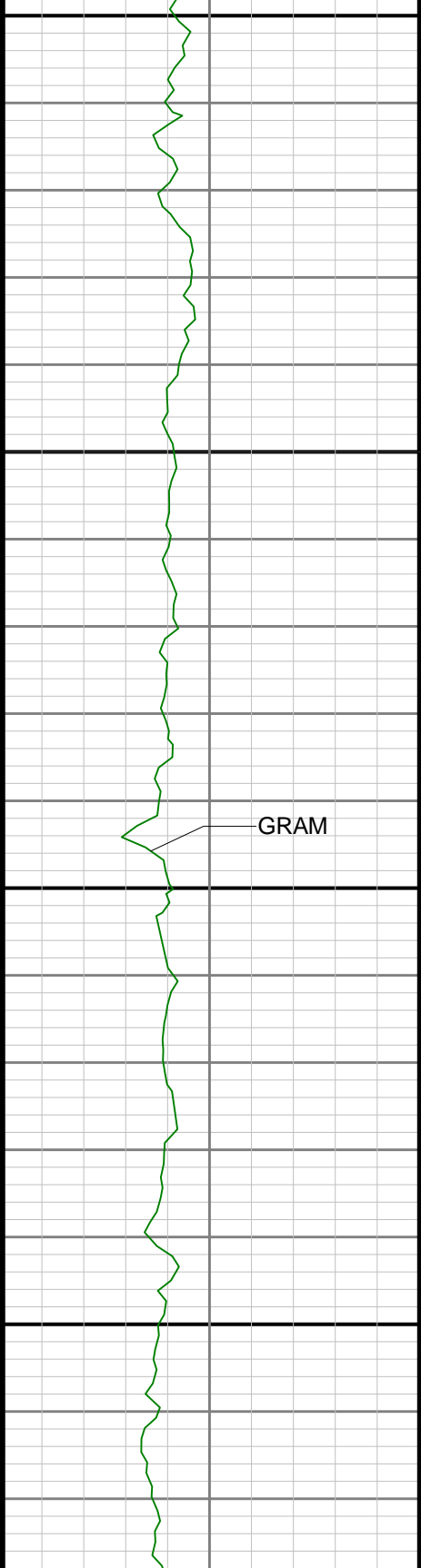




5800

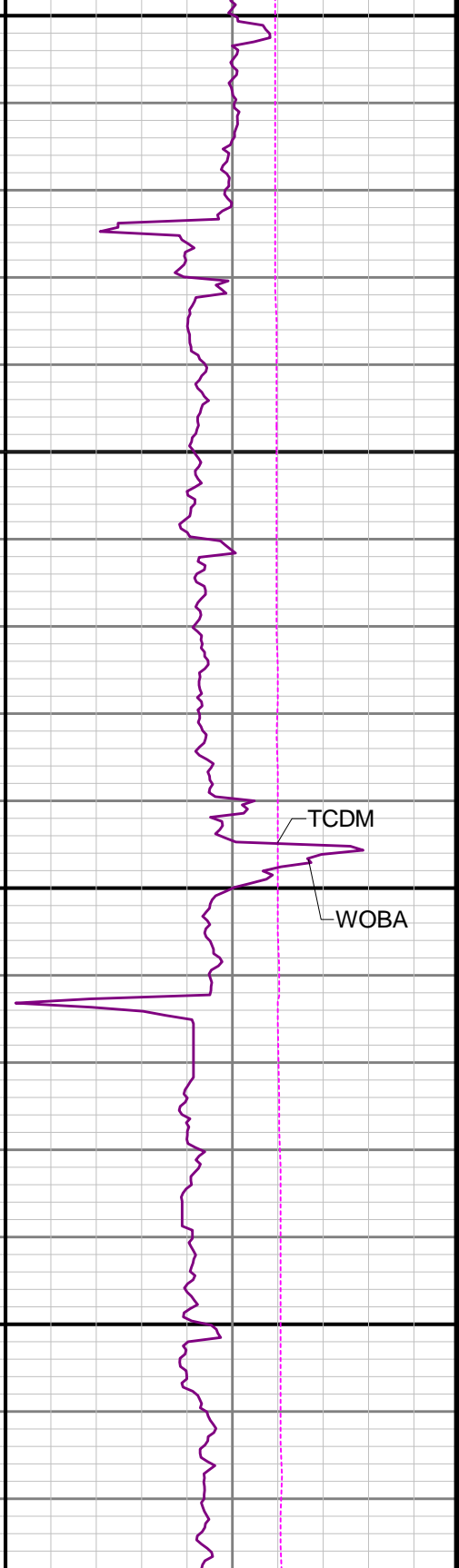
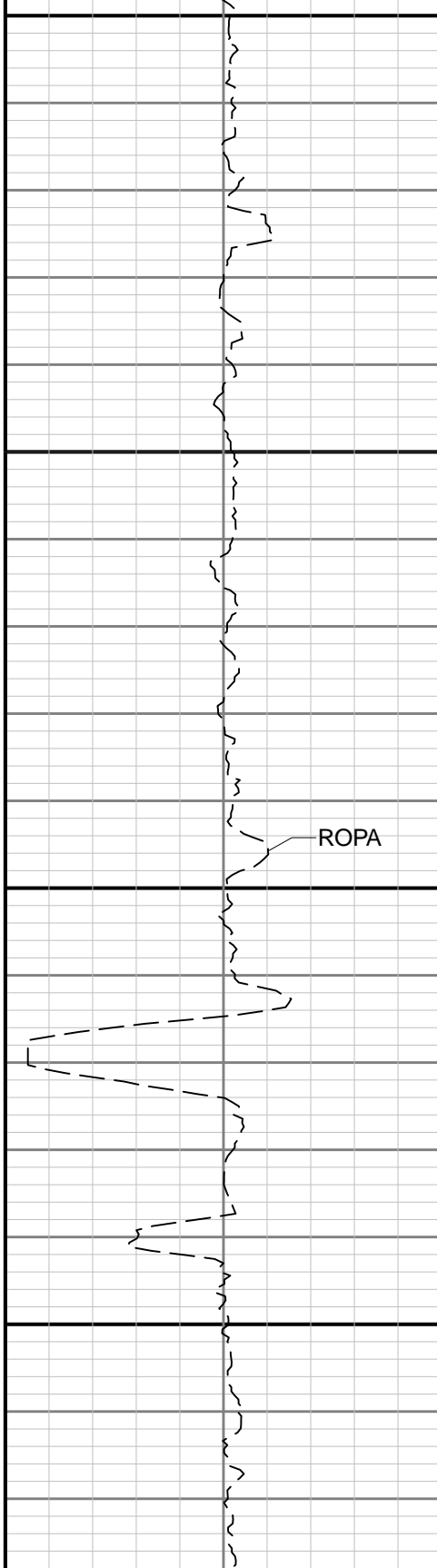
6000





006

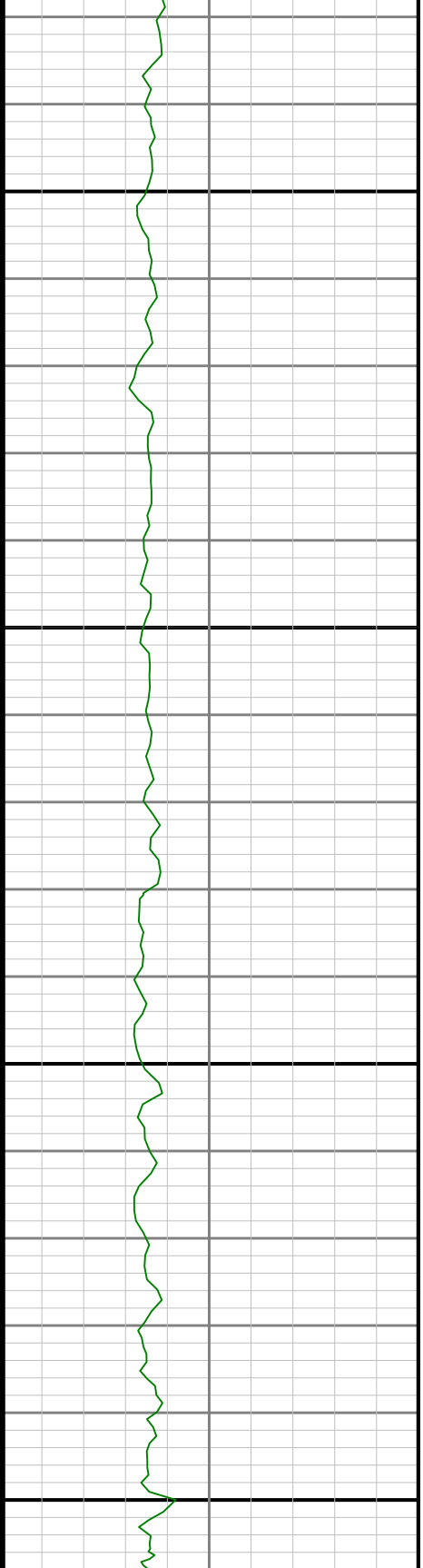
0009

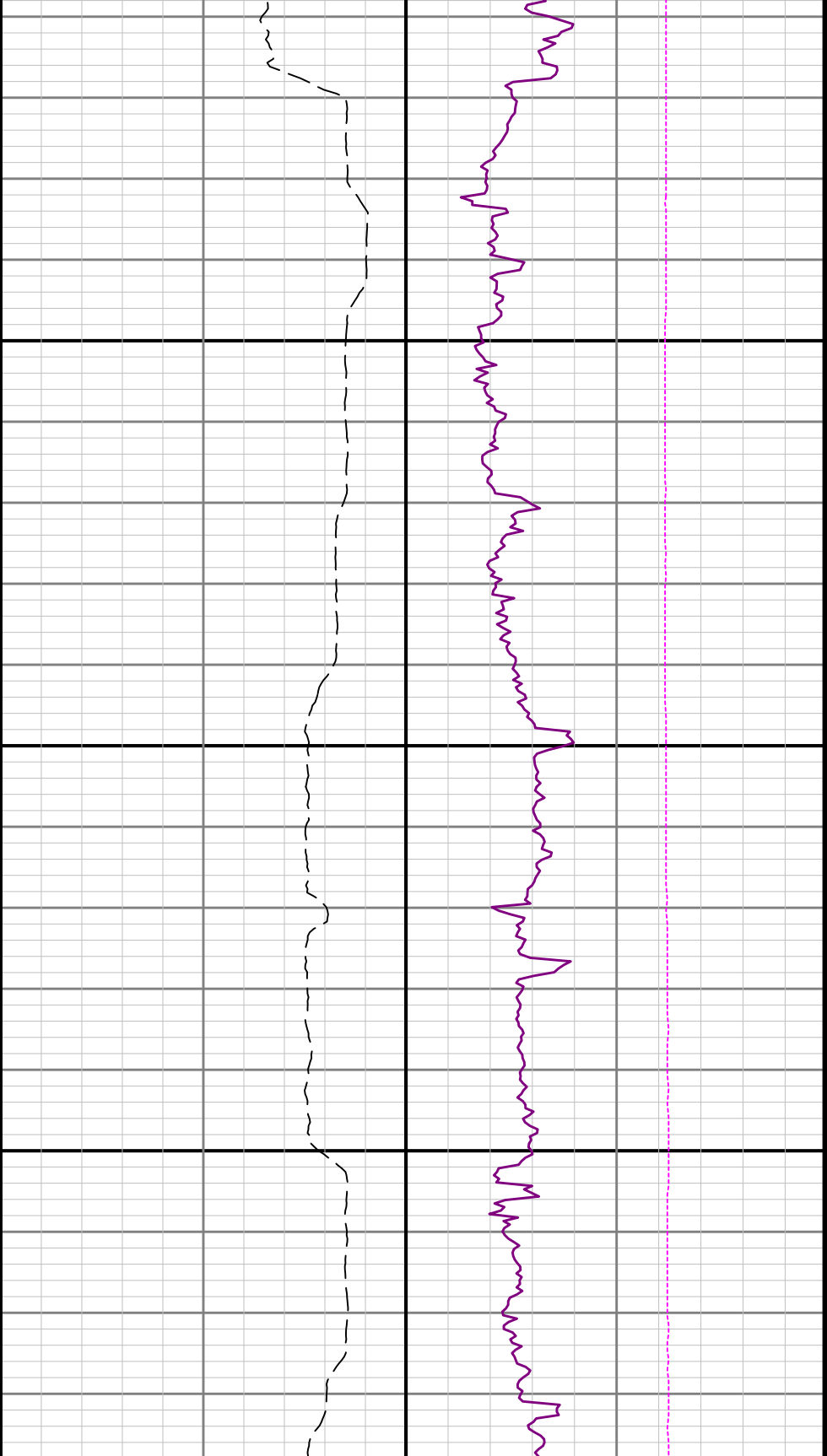




6100

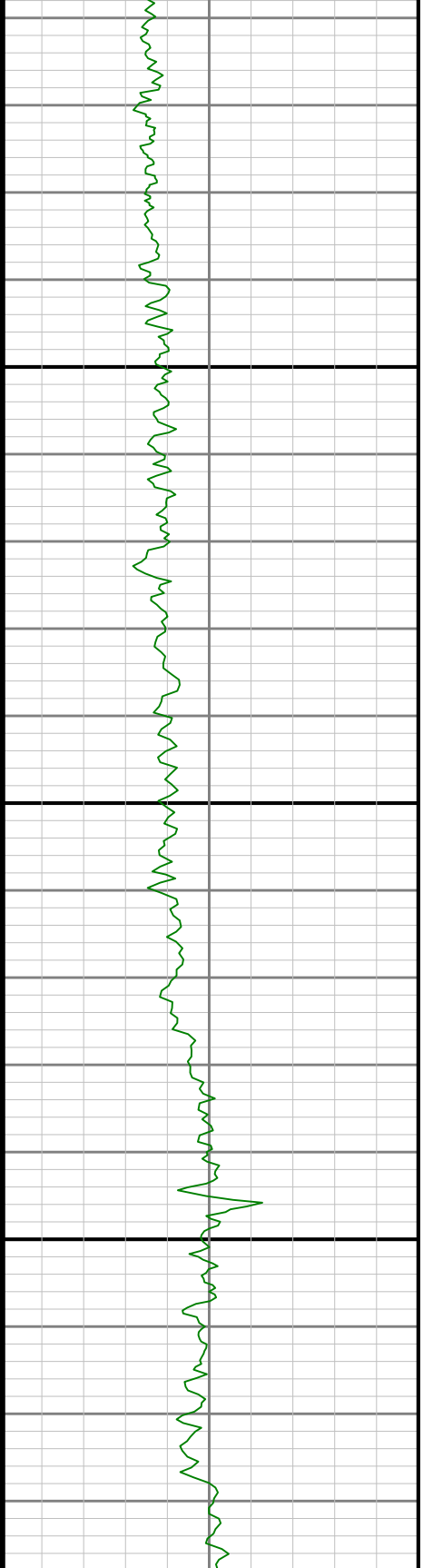
6200

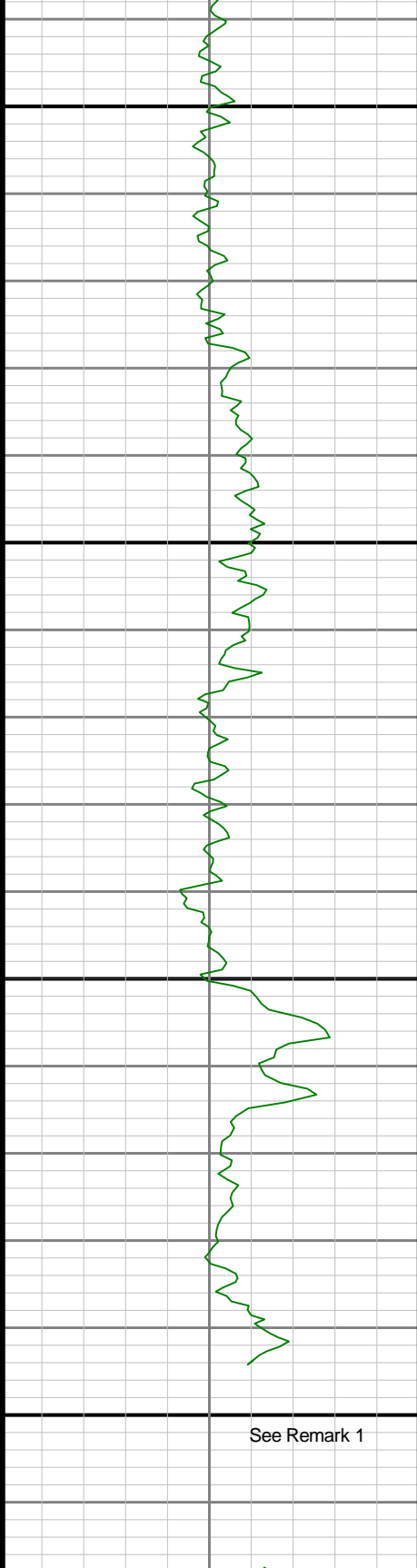




6300

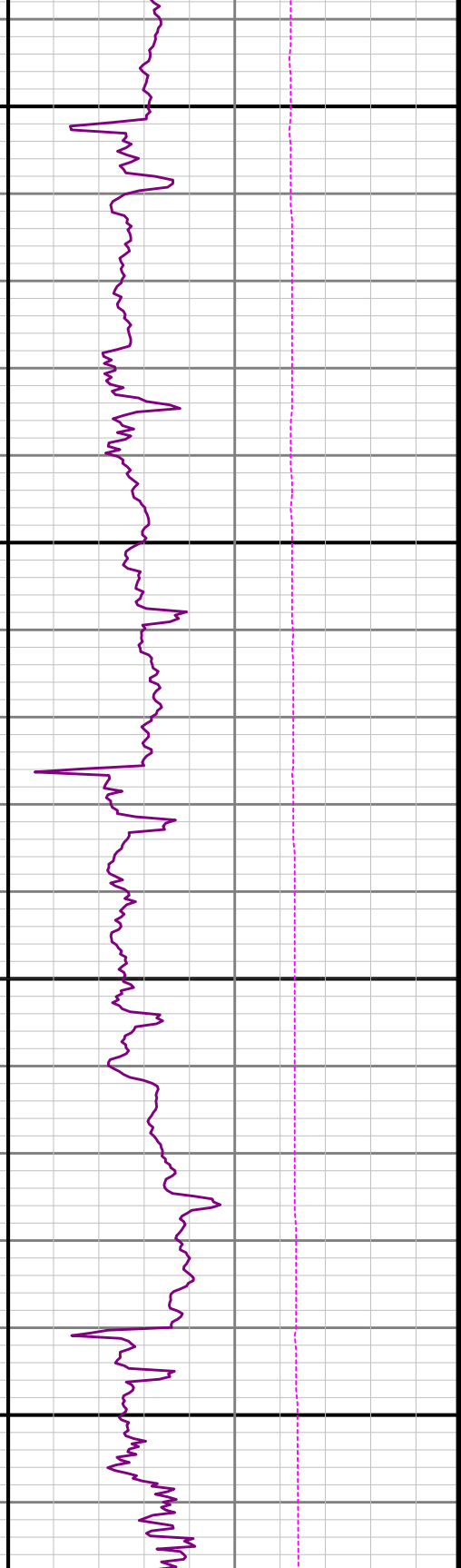
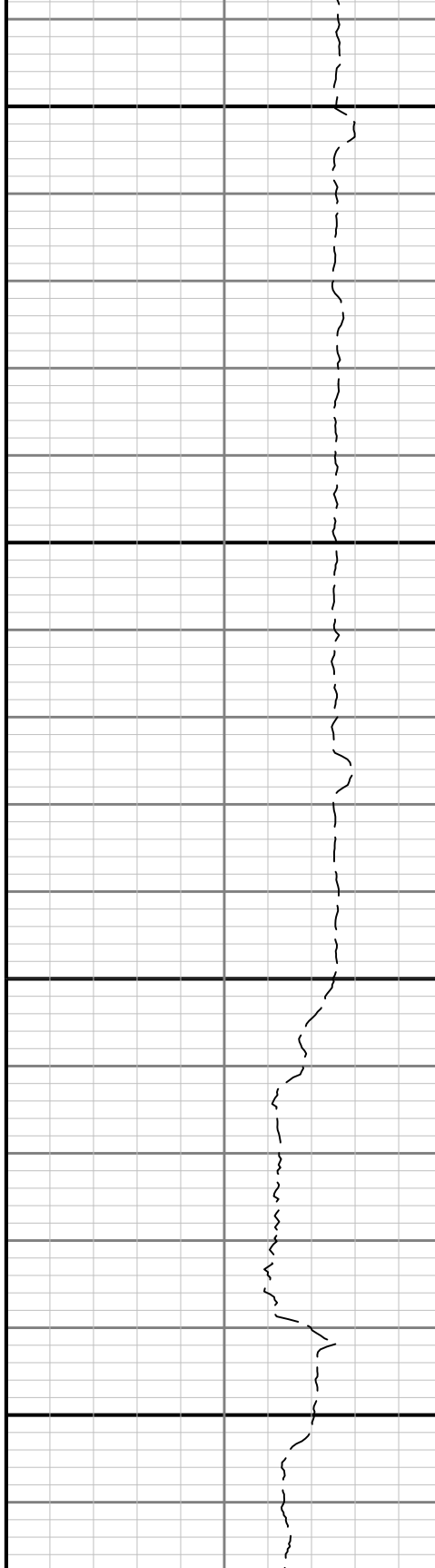
6400

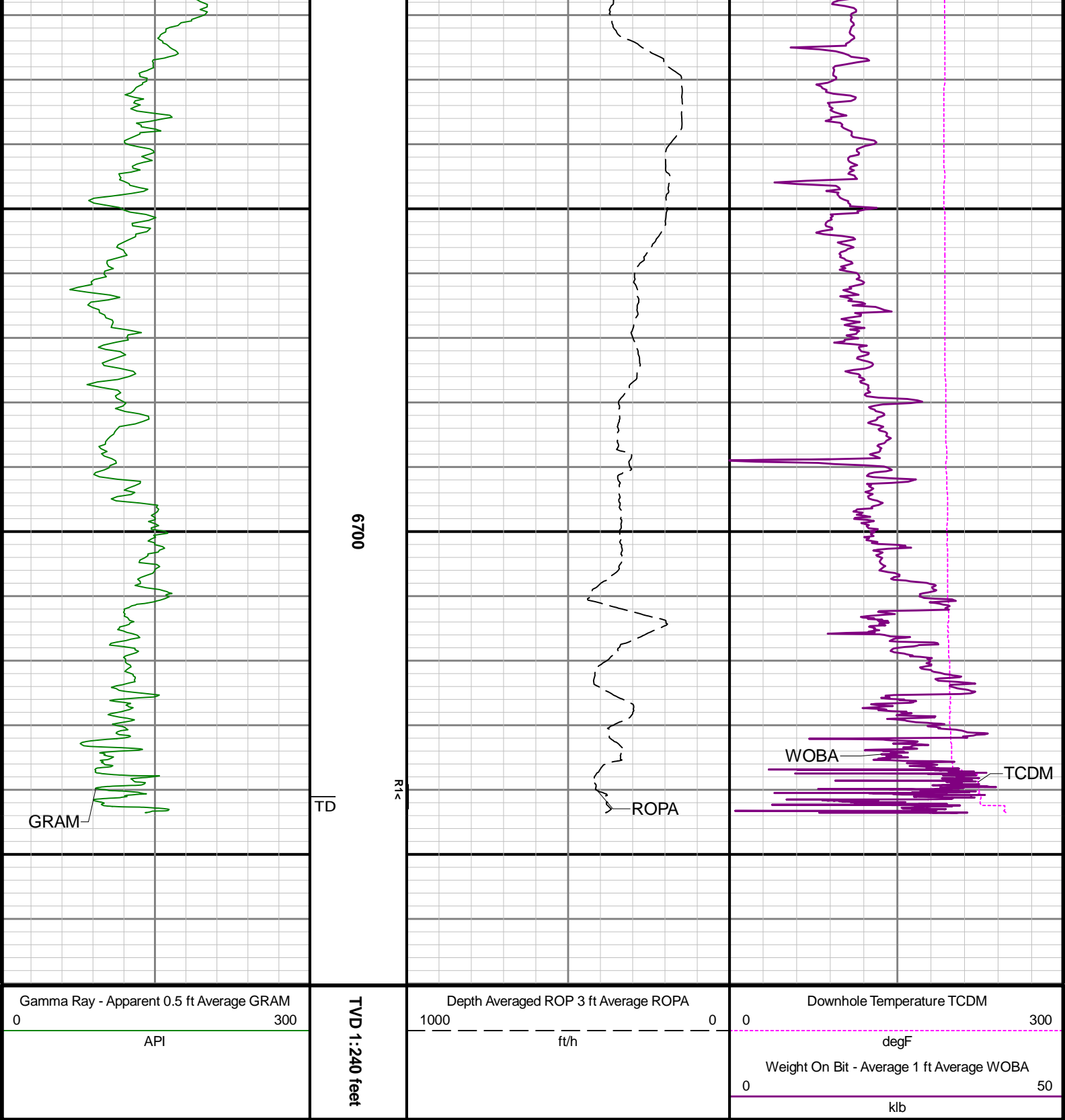




6500

0099





Directional Survey Summary

Latitude:		40° 12' 00.461" N						Longitude:		104° 30' 06.876" W			
North Reference:		Grid						Drill Depth Zero:		Rig Floor			
Vertical Datum is:		Mean Sea Level						Vertical Datum to DDZ: (ft)		4817.00			
Vertical Section North: (ft)		0.00						Vertical Section East: (ft)		0.00			
Vertical Section Azimuth: (deg)		184.64											
Grid Convergence: (deg)		-0.64						Magnetic Declination: (deg)		7.96			
Total Correction: (deg)		7.32						TVD Calculation Method:		Minimum Curvature			
Magnetic Correction:		Off						Local Magnetic Field: (nT)		51993			
Local Magnetic Dip Angle: (deg)		66.60						Local Gravity Field: (m/s2)		9.800			
Tie-In / Projection	Measured Depth (ft)	Inclination (deg)	Azimuth (deg)	Temperature (degF)	North (ft)	East (ft)	True Vertical Depth (ft)	TVD Subsea (ft)	Vertical Section (ft)	Course Length (ft)	Dog Leg Severity (deg/100ft)	Build Rate (deg/100ft)	Turn Rate (deg/100ft)
Tie-In	0.00	0.00	0.00	N/A	0.00	0.00	0.00	-4817.00	0.00	0.00	0.00	0.00	0.00
	80.00	0.16	250.14	N/A	-0.04	-0.11	80.00	-4737.00	0.05	80.00	0.20	0.20	-137.32
	174.00	0.10	148.23	N/A	-0.15	-0.19	174.00	-4643.00	0.17	94.00	0.22	-0.06	-108.41
	266.00	0.49	147.96	N/A	-0.55	0.07	266.00	-4551.00	0.55	92.00	0.42	0.42	-0.29
	329.00	0.19	210.42	N/A	-0.87	0.16	329.00	-4488.00	0.86	63.00	0.69	-0.48	99.14
	423.00	0.41	250.97	N/A	-1.12	-0.24	423.00	-4394.00	1.13	94.00	0.31	0.23	43.14
	518.00	0.52	258.24	N/A	-1.32	-0.98	517.99	-4299.01	1.39	95.00	0.13	0.12	7.65
	613.00	0.37	190.75	N/A	-1.70	-1.46	612.99	-4204.01	1.82	95.00	0.54	-0.16	-71.04
	708.00	0.23	83.92	N/A	-1.99	-1.33	707.99	-4109.01	2.09	95.00	0.51	-0.15	-112.45
	802.00	0.52	280.73	N/A	-1.89	-1.56	801.99	-4015.01	2.01	94.00	0.79	0.31	-173.61
	897.00	0.80	185.87	N/A	-2.47	-2.05	896.98	-3920.02	2.62	95.00	1.04	0.29	-99.85
	992.00	1.07	210.24	N/A	-3.89	-2.57	991.97	-3825.03	4.09	95.00	0.50	0.28	25.65
	1086.00	0.80	192.31	N/A	-5.29	-3.15	1085.96	-3731.04	5.53	94.00	0.42	-0.29	-19.07
	1181.00	0.72	158.68	N/A	-6.50	-3.08	1180.95	-3636.05	6.72	95.00	0.47	-0.08	-35.40
	1276.00	0.58	144.03	N/A	-7.44	-2.58	1275.95	-3541.05	7.62	95.00	0.23	-0.15	-15.42
	1371.00	0.50	147.72	N/A	-8.18	-2.07	1370.94	-3446.06	8.32	95.00	0.09	-0.08	3.88
	1466.00	0.36	92.67	N/A	-8.54	-1.55	1465.94	-3351.06	8.64	95.00	0.44	-0.15	-57.95
	1560.00	0.46	123.00	N/A	-8.76	-0.94	1559.94	-3257.06	8.81	94.00	0.25	0.11	32.27
	1655.00	0.56	130.07	N/A	-9.27	-0.27	1654.93	-3162.07	9.26	95.00	0.12	0.11	7.44
	1750.00	0.31	80.24	N/A	-9.53	0.34	1749.93	-3067.07	9.47	95.00	0.45	-0.26	-52.45
	1844.00	0.46	48.37	N/A	-9.23	0.88	1843.93	-2973.07	9.13	94.00	0.27	0.16	-33.90
	1939.00	0.30	236.20	N/A	-9.12	0.95	1938.93	-2878.07	9.01	95.00	0.80	-0.17	-181.23
	1995.00	0.54	230.69	112.2	-9.37	0.63	1994.93	-2822.07	9.28	56.00	0.43	0.43	-9.84
	2089.00	0.06	56.62	117.6	-9.62	0.33	2088.93	-2728.07	9.56	94.00	0.64	-0.51	-185.18
	2184.00	0.09	8.20	120.3	-9.52	0.38	2183.92	-2633.08	9.46	95.00	0.07	0.03	-50.97
	2278.00	0.22	322.80	120.3	-9.30	0.28	2277.92	-2539.08	9.25	94.00	0.18	0.14	-48.30
	2373.00	0.90	220.99	123.0	-9.72	-0.32	2372.92	-2444.08	9.71	95.00	1.02	0.72	-107.17
	2468.00	3.13	214.80	128.4	-12.41	-2.29	2467.86	-2349.14	12.56	95.00	2.36	2.35	-6.52
	2562.00	5.49	216.35	128.4	-18.14	-6.42	2561.58	-2255.42	18.60	94.00	2.51	2.51	1.65
	2657.00	7.93	215.50	133.8	-27.14	-12.92	2655.93	-2161.07	28.09	95.00	2.57	2.57	-0.89
	2751.00	11.85	215.87	133.8	-40.24	-22.34	2748.51	-2068.49	41.92	94.00	4.17	4.17	0.39
	2846.00	14.30	214.59	133.8	-57.81	-34.72	2841.04	-1975.96	60.43	95.00	2.60	2.58	-1.35
	2941.00	16.98	214.54	139.2	-78.90	-49.25	2932.52	-1884.48	82.62	95.00	2.82	2.82	-0.05
	3035.00	16.84	214.06	139.2	-101.48	-64.66	3022.45	-1794.55	106.38	94.00	0.21	-0.15	-0.51
	3129.00	17.49	219.24	141.9	-123.71	-81.22	3112.27	-1704.73	129.87	94.00	1.77	0.69	5.51
	3224.00	17.66	215.53	141.9	-146.49	-98.63	3202.84	-1614.16	153.99	95.00	1.19	0.18	-3.91
	3318.00	17.62	217.89	144.6	-169.32	-115.65	3292.42	-1524.58	178.12	94.00	0.76	-0.04	2.51
	3413.00	17.43	223.67	144.6	-190.96	-134.31	3383.02	-1433.98	201.20	95.00	1.84	-0.20	6.08
	3507.00	17.83	229.02	144.6	-210.59	-154.89	3472.61	-1344.39	222.42	94.00	1.77	0.43	5.69
	3602.00	17.82	223.42	147.3	-230.68	-175.87	3563.05	-1253.95	244.15	95.00	1.80	-0.01	-5.89
	3697.00	17.98	214.32	147.3	-253.36	-194.13	3653.47	-1163.53	268.23	95.00	2.95	0.17	-9.58
	3791.00	18.74	213.24	150.0	-277.97	-210.59	3742.69	-1074.31	294.09	94.00	0.89	0.81	-1.15
	3886.00	18.29	214.13	150.0	-303.07	-227.31	3832.77	-984.23	320.47	95.00	0.56	-0.47	0.94
	3980.00	17.89	213.65	150.0	-327.30	-243.59	3922.12	-894.88	345.93	94.00	0.45	-0.43	-0.51
	4075.00	17.97	214.13	150.0	-351.58	-259.90	4012.51	-804.49	371.45	95.00	0.18	0.08	0.51
	4169.00	18.23	214.03	152.7	-375.76	-276.26	4101.86	-715.14	396.88	94.00	0.28	0.28	-0.11
	4264.00	18.04	214.89	152.7	-400.14	-292.99	4192.14	-624.86	422.53	95.00	0.35	-0.20	0.91

	4359.00	18.21	213.91	155.4	-424.53	-309.69	4282.43	-534.57	448.19	95.00	0.37	0.18	-1.03
	4454.00	18.06	214.46	155.4	-448.99	-326.30	4372.71	-444.29	473.91	95.00	0.24	-0.16	0.58
	4548.00	18.01	214.53	155.4	-472.98	-342.78	4462.09	-354.91	499.15	94.00	0.06	-0.05	0.07
	4643.00	17.86	214.49	158.1	-497.08	-359.36	4552.47	-264.53	524.52	95.00	0.16	-0.16	-0.04
	4738.00	18.37	214.56	158.1	-521.42	-376.10	4642.76	-174.24	550.13	95.00	0.54	0.54	0.07
	4832.00	18.35	215.00	160.8	-545.74	-392.99	4731.98	-85.02	575.74	94.00	0.15	-0.02	0.47
	4927.00	18.26	214.62	160.8	-570.23	-410.02	4822.17	5.17	601.53	95.00	0.16	-0.09	-0.40
	5022.00	18.17	214.22	163.5	-594.73	-426.81	4912.41	95.41	627.31	95.00	0.16	-0.09	-0.42
	5116.00	18.18	214.50	163.5	-618.93	-443.35	5001.72	184.72	652.77	94.00	0.09	0.01	0.30
	5211.00	18.01	215.13	166.2	-643.16	-460.20	5092.02	275.02	678.28	95.00	0.27	-0.18	0.66
	5306.00	17.45	218.36	166.2	-666.10	-477.31	5181.56	364.56	702.52	94.00	1.20	-0.60	3.44
	5400.00	16.90	227.56	163.5	-686.59	-496.34	5272.34	455.34	724.49	95.00	2.91	-0.58	9.68
	5495.00	18.51	230.36	166.2	-705.53	-518.15	5362.84	545.84	745.13	95.00	1.92	1.69	2.95
	5589.00	18.71	227.20	168.9	-725.29	-540.70	5451.93	634.93	766.65	94.00	1.09	0.21	-3.36
	5684.00	17.62	214.76	168.9	-747.46	-560.08	5542.22	725.22	790.32	95.00	4.23	-1.15	-13.09
	5779.00	18.64	217.27	171.6	-771.36	-577.48	5632.51	815.51	815.55	95.00	1.35	1.07	2.64
	5874.00	19.16	212.51	174.3	-796.59	-595.05	5722.39	905.39	842.12	95.00	1.71	0.55	-5.01
	5969.00	17.96	209.25	177.0	-822.52	-610.59	5812.45	995.45	869.22	95.00	1.67	-1.26	-3.43
	6064.00	19.11	206.23	177.0	-849.25	-624.62	5902.52	1085.52	896.99	95.00	1.58	1.21	-3.18
	6158.00	18.86	206.32	179.7	-876.67	-638.15	5991.41	1174.41	925.42	94.00	0.27	-0.27	0.10
	6253.00	18.68	205.99	182.5	-904.11	-651.63	6081.36	1264.36	953.86	95.00	0.22	-0.19	-0.35
	6348.00	18.27	206.84	182.5	-931.07	-665.02	6171.46	1354.46	981.81	95.00	0.52	-0.43	0.89
	6443.00	17.48	206.80	185.2	-957.09	-678.18	6261.88	1444.88	1008.81	95.00	0.83	-0.83	-0.04
	6537.00	24.64	189.72	185.2	-989.08	-687.87	6349.62	1532.62	1041.48	94.00	9.96	7.62	-18.17
	6632.00	32.36	188.82	185.2	-1033.79	-695.12	6433.05	1616.05	1086.63	95.00	8.14	8.13	-0.95
	6727.00	40.43	191.40	187.9	-1089.20	-705.13	6509.46	1692.46	1142.67	95.00	8.64	8.49	2.72
	6821.00	49.53	195.20	190.6	-1153.73	-720.56	6575.89	1758.89	1208.24	94.00	10.09	9.68	4.04
	6916.00	55.63	196.10	190.6	-1226.34	-740.93	6633.59	1816.59	1282.26	95.00	6.46	6.42	0.95
	7010.00	65.29	194.28	193.3	-1305.18	-762.27	6679.88	1862.88	1362.57	94.00	10.41	10.28	-1.94
	7105.00	76.74	193.11	196.0	-1392.32	-783.47	6710.74	1893.74	1451.14	95.00	12.11	12.05	-1.23
	7200.00	81.10	186.71	196.0	-1484.09	-799.47	6729.01	1912.01	1543.90	95.00	8.05	4.59	-6.74
	7295.00	89.57	183.87	198.7	-1578.28	-808.17	6736.73	1919.73	1638.49	95.00	9.40	8.92	-2.99
	7390.00	90.55	174.80	201.4	-1673.18	-807.07	6736.63	1919.63	1732.98	95.00	9.60	1.03	-9.55
	7484.00	89.88	176.55	204.1	-1766.90	-799.98	6736.28	1919.28	1825.83	94.00	1.99	-0.71	1.86
	7579.00	89.57	179.40	206.8	-1861.83	-796.63	6736.73	1919.73	1920.17	95.00	3.02	-0.33	3.00
	7673.00	89.66	179.60	206.8	-1955.83	-795.81	6737.37	1920.37	2013.79	94.00	0.23	0.10	0.21
	7768.00	90.09	179.74	209.5	-2050.82	-795.26	6737.57	1920.57	2108.44	95.00	0.48	0.45	0.15
	7863.00	90.34	179.88	212.2	-2145.82	-794.94	6737.22	1920.22	2203.10	95.00	0.30	0.26	0.15
	7958.00	90.15	179.40	214.9	-2240.82	-794.35	6736.81	1919.81	2297.74	95.00	0.54	-0.20	-0.51
	8052.00	90.31	179.89	214.9	-2334.82	-793.76	6736.43	1919.43	2391.38	94.00	0.55	0.17	0.52
	8147.00	89.45	179.45	214.9	-2429.81	-793.22	6736.63	1919.63	2486.02	95.00	1.02	-0.91	-0.46
	8242.00	90.15	181.68	214.9	-2524.80	-794.15	6736.96	1919.96	2580.77	95.00	2.46	0.74	2.35
	8336.00	89.97	180.75	217.6	-2618.78	-796.15	6736.87	1919.87	2674.60	94.00	1.01	-0.19	-0.99
	8431.00	90.40	178.69	217.6	-2713.77	-795.68	6736.56	1919.56	2769.25	95.00	2.22	0.45	-2.17
	8526.00	90.06	177.25	217.6	-2808.71	-792.32	6736.18	1919.18	2863.60	95.00	1.56	-0.36	-1.52
	8621.00	89.91	178.22	217.6	-2903.64	-788.56	6736.20	1919.20	2957.91	95.00	1.03	-0.16	1.02
	8715.00	89.60	178.46	217.6	-2997.59	-785.84	6736.60	1919.60	3051.34	94.00	0.42	-0.33	0.26
	8810.00	89.66	179.14	220.3	-3092.57	-783.85	6737.22	1920.22	3145.85	95.00	0.72	0.06	0.72
	8905.00	89.11	177.33	220.3	-3187.52	-780.93	6738.24	1921.24	3240.24	95.00	1.99	-0.58	-1.91
	9000.00	89.23	177.16	223.0	-3282.40	-776.36	6739.61	1922.61	3334.44	95.00	0.22	0.13	-0.18
	9094.00	89.82	177.96	223.0	-3376.31	-772.36	6740.39	1923.39	3427.72	94.00	1.06	0.63	0.85
	9189.00	89.20	177.50	223.0	-3471.23	-768.60	6741.21	1924.21	3522.03	95.00	0.81	-0.65	-0.48
	9284.00	89.60	179.16	223.0	-3566.18	-765.83	6742.20	1925.20	3616.44	95.00	1.80	0.42	1.75
	9378.00	90.22	180.33	225.7	-3660.18	-765.41	6742.35	1925.35	3710.10	94.00	1.41	0.66	1.24
	9473.00	90.18	179.81	225.7	-3755.18	-765.53	6742.02	1925.02	3804.80	95.00	0.55	-0.04	-0.55
	9568.00	90.12	180.08	228.4	-3850.17	-765.43	6741.77	1924.77	3899.48	95.00	0.29	-0.06	0.28
	9663.00	89.72	179.58	228.4	-3945.17	-765.15	6741.90	1924.90	3994.14	95.00	0.67	-0.42	-0.53
	9757.00	89.94	179.74	228.4	-4039.17	-764.59	6742.18	1925.18	4087.79	94.00	0.29	0.23	0.17
	9852.00	90.28	180.12	231.1	-4134.17	-764.48	6742.00	1925.00	4182.46	95.00	0.54	0.36	0.40
	9947.00	90.15	179.71	231.1	-4229.17	-764.34	6741.64	1924.64	4277.14	95.00	0.45	-0.14	-0.43

	10042.00	90.22	179.67	233.8	-4324.17	-763.82	6741.33	1924.33	4371.79	95.00	0.08	0.07	-0.04
	10136.00	90.40	180.22	233.8	-4418.17	-763.73	6740.82	1923.82	4465.47	94.00	0.62	0.19	0.59
	10230.00	90.25	179.81	233.8	-4512.16	-763.76	6740.29	1923.29	4559.16	94.00	0.46	-0.16	-0.44
	10324.00	90.22	179.67	233.8	-4606.16	-763.33	6739.91	1922.91	4652.82	94.00	0.15	-0.03	-0.15
	10419.00	90.09	179.96	236.5	-4701.16	-763.02	6739.65	1922.65	4747.48	95.00	0.33	-0.14	0.31
	10514.00	90.09	180.03	239.2	-4796.16	-763.02	6739.50	1922.50	4842.17	95.00	0.07	-0.00	0.07
	10609.00	90.31	179.99	239.2	-4891.16	-763.03	6739.17	1922.17	4936.86	95.00	0.24	0.23	-0.04
	10703.00	90.40	180.23	239.2	-4985.16	-763.21	6738.59	1921.59	5030.56	94.00	0.27	0.10	0.26
	10798.00	90.49	181.41	239.2	-5080.14	-764.57	6737.85	1920.85	5125.35	95.00	1.25	0.09	1.24
	10893.00	89.66	180.05	239.2	-5175.13	-765.78	6737.72	1920.72	5220.12	95.00	1.68	-0.87	-1.43
	10987.00	90.12	180.39	239.2	-5269.13	-766.14	6737.90	1920.90	5313.84	94.00	0.61	0.49	0.36
	11082.00	89.57	180.28	241.9	-5364.13	-766.70	6738.16	1921.16	5408.57	95.00	0.59	-0.58	-0.12
	11177.00	89.88	180.12	241.9	-5459.13	-767.03	6738.62	1921.62	5503.29	95.00	0.37	0.33	-0.17
	11272.00	89.78	179.97	241.9	-5554.13	-767.11	6738.90	1921.90	5597.98	95.00	0.19	-0.11	-0.16
	11366.00	89.88	180.06	241.9	-5648.13	-767.13	6739.18	1922.18	5691.67	94.00	0.14	0.11	0.10
	11461.00	89.72	180.32	244.6	-5743.13	-767.45	6739.51	1922.51	5786.39	95.00	0.32	-0.17	0.27
	11555.00	89.69	180.16	244.6	-5837.12	-767.84	6739.99	1922.99	5880.11	94.00	0.17	-0.03	-0.17
	11650.00	89.88	180.60	244.6	-5932.12	-768.47	6740.35	1923.35	5974.84	95.00	0.50	0.20	0.46
	11745.00	88.80	179.87	244.6	-6027.11	-768.86	6741.44	1924.44	6069.56	95.00	1.37	-1.14	-0.77
	11840.00	89.29	180.16	247.3	-6122.10	-768.88	6743.03	1926.03	6164.23	95.00	0.60	0.52	0.31
	11935.00	90.15	179.43	247.3	-6217.10	-768.54	6743.49	1926.49	6258.89	95.00	1.19	0.91	-0.77
	12029.00	89.85	179.82	247.3	-6311.09	-767.93	6743.49	1926.49	6352.53	94.00	0.52	-0.32	0.41
	12124.00	90.22	180.09	263.5	-6406.09	-767.85	6743.43	1926.43	6447.21	95.00	0.48	0.39	0.28
	12219.00	90.77	181.74	247.3	-6501.07	-769.37	6742.61	1925.61	6542.00	95.00	1.83	0.58	1.74
	12313.00	89.63	179.59	250.0	-6595.06	-770.46	6742.28	1925.28	6635.77	94.00	2.59	-1.21	-2.29
	12408.00	90.28	179.89	250.0	-6690.06	-770.03	6742.36	1925.36	6730.42	95.00	0.75	0.68	0.32
	12502.00	90.15	180.70	250.0	-6784.05	-770.51	6742.01	1925.01	6824.15	94.00	0.87	-0.14	0.86
	12597.00	90.15	179.70	250.0	-6879.05	-770.85	6741.76	1924.76	6918.87	95.00	1.05	0.00	-1.05
	12786.00	90.37	180.76	250.0	-7068.05	-771.60	6740.90	1923.90	7107.30	189.00	0.57	0.12	0.56
	12881.00	90.00	179.48	252.7	-7163.04	-771.80	6740.59	1923.59	7202.00	95.00	1.40	-0.39	-1.35
	12976.00	90.18	179.89	252.7	-7258.04	-771.28	6740.44	1923.44	7296.65	95.00	0.47	0.19	0.43
	13070.00	90.03	178.59	252.7	-7352.03	-770.03	6740.27	1923.27	7390.23	94.00	1.39	-0.16	-1.38
	13165.00	90.15	178.51	252.7	-7447.00	-767.63	6740.12	1923.12	7484.69	95.00	0.15	0.13	-0.08
	13260.00	90.09	178.99	255.4	-7541.98	-765.56	6739.92	1922.92	7579.19	95.00	0.51	-0.06	0.51
	13354.00	89.97	178.59	255.4	-7635.96	-763.57	6739.87	1922.87	7672.70	94.00	0.44	-0.13	-0.43
	13449.00	90.31	178.99	255.4	-7730.93	-761.57	6739.64	1922.64	7767.20	95.00	0.55	0.36	0.42
	13543.00	90.34	178.90	255.4	-7824.92	-759.84	6739.11	1922.11	7860.74	94.00	0.10	0.03	-0.10
	13638.00	89.82	176.30	258.1	-7919.83	-755.86	6738.98	1921.98	7955.01	95.00	2.79	-0.55	-2.74
	13733.00	89.91	175.61	258.1	-8014.59	-749.16	6739.20	1922.20	8048.92	95.00	0.73	0.09	-0.73
	13827.00	90.12	182.27	258.1	-8108.52	-747.42	6739.18	1922.18	8142.41	94.00	7.09	0.22	7.09
	13922.00	90.28	181.40	258.1	-8203.47	-750.46	6738.84	1921.84	8237.29	95.00	0.93	0.17	-0.92
	14017.00	90.28	180.62	258.1	-8298.45	-752.14	6738.38	1921.38	8332.10	95.00	0.82	0.00	-0.82
	14111.00	89.75	180.34	260.8	-8392.45	-752.92	6738.36	1921.36	8425.85	94.00	0.64	-0.56	-0.30
	14206.00	89.88	180.55	260.8	-8487.44	-753.66	6738.66	1921.66	8520.60	95.00	0.26	0.14	0.22
	14300.00	89.78	180.17	260.8	-8581.44	-754.25	6738.94	1921.94	8614.33	94.00	0.42	-0.11	-0.40
	14395.00	89.69	180.49	260.8	-8676.44	-754.80	6739.38	1922.38	8709.06	95.00	0.35	-0.09	0.34
	14490.00	89.63	180.66	263.5	-8771.43	-755.75	6739.94	1922.94	8803.82	95.00	0.19	-0.06	0.18
	14584.00	89.57	179.67	263.5	-8865.43	-756.02	6740.60	1923.60	8897.53	94.00	1.06	-0.06	-1.05
	14679.00	89.88	180.60	263.5	-8960.43	-756.25	6741.06	1924.06	8992.24	95.00	1.03	0.33	0.98
	14774.00	89.78	180.57	263.5	-9055.42	-757.22	6741.34	1924.34	9087.00	95.00	0.11	-0.11	-0.03
Projection	14802.00	89.78	180.57	N/A	-9083.42	-757.50	6741.45	1924.45	9114.93	28.00	0.00	-0.02	-0.00