

Click here to reset the form

FORM
21
Rev 9/14

State of Colorado
Oil and Gas Conservation Commission



1120 Lincoln Street, Suite 801, Denver, Colorado 80203 (303)-894-2100 Fax: (303)-894-2109

MECHANICAL INTEGRITY TEST

1. Duration of the pressure test must be a minimum of 15 minutes.
2. An original pressure chart must accompany this report if this test was not witnessed by a OGCC representative. Injection wells tests must be witnessed by an OGCC representative.
3. For production wells, test pressures must be a at minimum of 300 psig.
4. New injection wells must be tested to maximum requested injection pressure.
5. For injection wells, test pressures must be at least 300 psig or average injection pressure, whichever is greater.
6. A minimum 300 psi differential pressure must be maintained between the tubing and tubing/casing annulus pressure.
7. Do not use this form if submitting under provisions of Rule 326.a.(1) B. or C.
8. OGCC notification must be provided 10 days prior to the test via Form 42.
9. Packers or bridge plugs, etc., must be set within 100 feet of the perforated interval to be considered a valid test.

OGCC Operator Number: 16700 Contact Name and Telephone
Name of Operator: Chevron U.S.A. Inc ANITA SANFORD
Address: 100 Chevron Road No: (970) 675-3842
City: Rangely State: CO Zip: 81648 Email: ATLX@chevron.com
API Number: 05-103-01029 OGCC Facility ID Number: 47443 / Rangely Field 72370
Well/Facility Name: UNION PACIFIC Well/Facility Number: 15-28
Location QtrQtr: NENW Section: 28 Township: 2N Range: 102W Meridian: 6th

FOR OGCC USE ONLY

Document Number:

Date Received:

Complete the
Attachment Checklist

	Oper	OGCC
Pressure Chart	✓	
Cement Bond Log		
Tracer Survey		
Temperature Survey		
Inspection Number		✓

☒ SHUT-IN PRODUCTION WELL

☐ INJECTION WELL

Last MIT Date:

Test Type:

☒ Test to Maintain SI/TA status

☐ 5- year UIC

☐ Reset Packer

☐ Verification of Repairs

☐ Annual UIC Test

Describe Repairs or Other Well Activities: WELL SHUT IN 7/2/2020;

TEMPORARILY ABANDONED 7/14/2020 ISOLATED BY PACKER, TUBING PLUG, CLOSED MASTER VALVE AND DISCONNECTED FLOWLINE.

Wellbore Data at Time of Test

Injection/Producing Zone(s)

Perforated Interval:

Open Hole Interval:

Weber

5835-6388

Casing Test

Use when perforations or open hole is isolated by bridge plug or cement plug; use if cased-hole only with plug back total depth.

Bridge Plug or Cement Plug Depth

Tubing Casing/Annulus Test

Tubing Size:

2 7/8'

Tubing Depth:

5782.9

Top Packer Depth:

5782.6

Multiple Packers?

☐ Yes

☒ No

Test Data

Test Date
07/31/2020

Well Status During Test
SHUT IN

Casing Pressure Before Test

Initial Tubing Pressure

Final Tubing Pressure

Casing Pressure Start Test

350

Casing Pressure - 5 Min.

350

Casing Pressure - 10 Min.

350

Casing Pressure Final Test

350

Pressure Loss or Gain During Test

0

Test Witnessed by State Representative?

☒ Yes

☐ No

OGCC Field Representative (Print Name):

RICK MORAN

I hereby certify that the statements made in this form are, to the best of my knowledge, true, correct, and complete.

Print Name: Form 42# 402454701

Field Inspection #

700402657

Signed:

[Signature]

Title: Permitting Specialist

Date: 07/31/2020

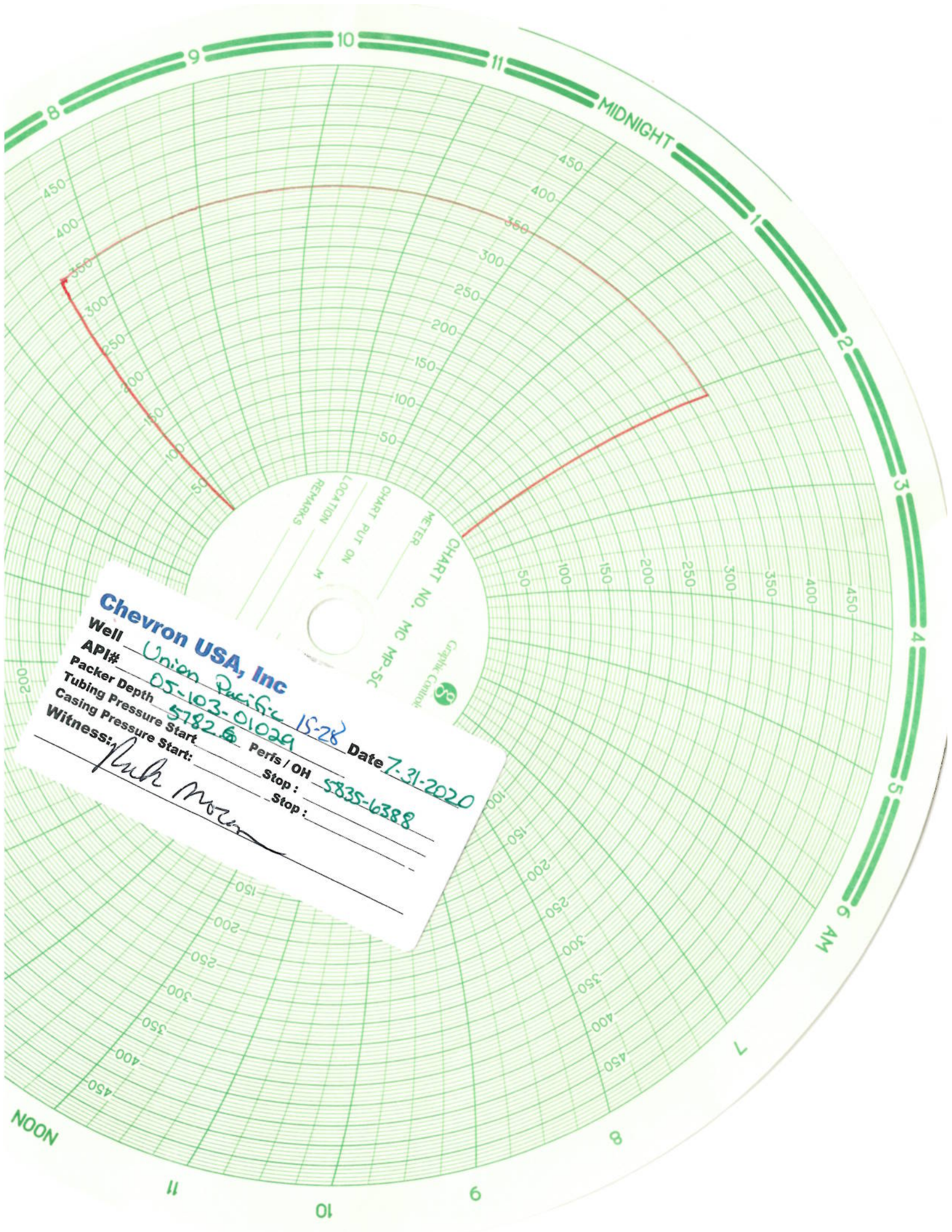
OGCC Approval:

[Signature]

Title: N.W. INSPECTOR

Date: 07/31/2020

Conditions of Approval, if any:



Chevron USA, Inc
Well Union Pacific
API# 05-103-01029
Packer Depth 15-28
Tubing Pressure Start 5782.6
Casing Pressure Start 5835-6388
Date 7-31-2020
Perfs / OH Stop :
Witness: Phil Moran Stop :

REMARKS
LOCATION
CHART PUT ON
METER
CHART NO. MC MP-SC
Graphic Controls