

Inspection Photos

Operator: Hilcorp Oil and Gas
API: 067-06442
Date: 7/28/2020



Photo 1. View of the eastern project area from the eastern edge facing southward. Stormwater sheet-flows are carrying sediment off of the eastern edge of the project area.

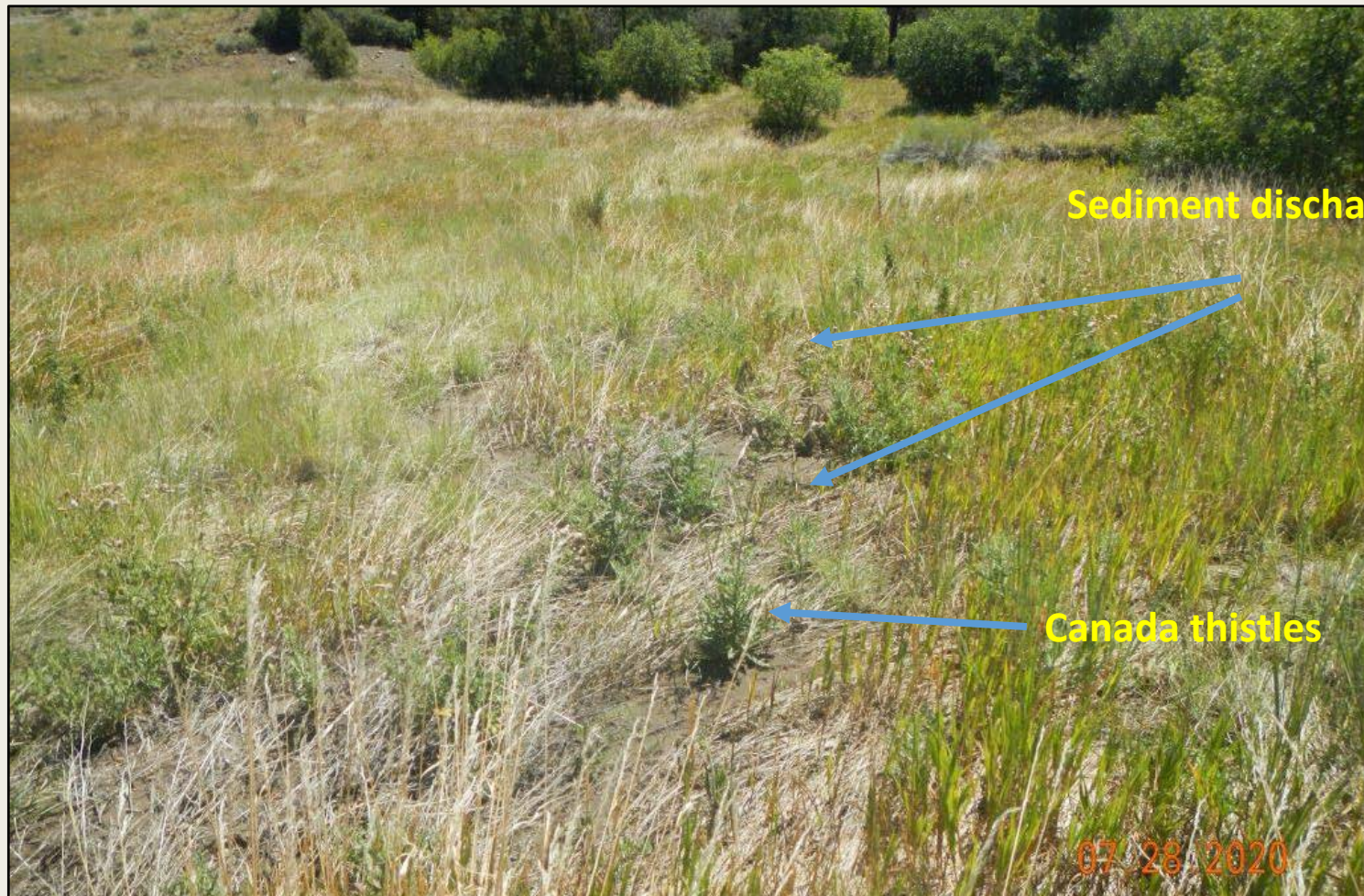


Photo 2. View of the eastern interim reclamation area facing down-slope. Vegetation is established and largely comprised of smooth brome and western wheatgrass. Sediment discharge from the well pad flows down-slope and off of the project area. Canada thistles are also present here.



Photo 3. View of musk thistles within the eastern project area. Approximately 200 individuals observed.



Photo 4. View of reference area vegetation comprised of gambel oak and antelope bitterbrush-dominated shrubland with grasses such as western wheatgrass and blue grama common in the understory.