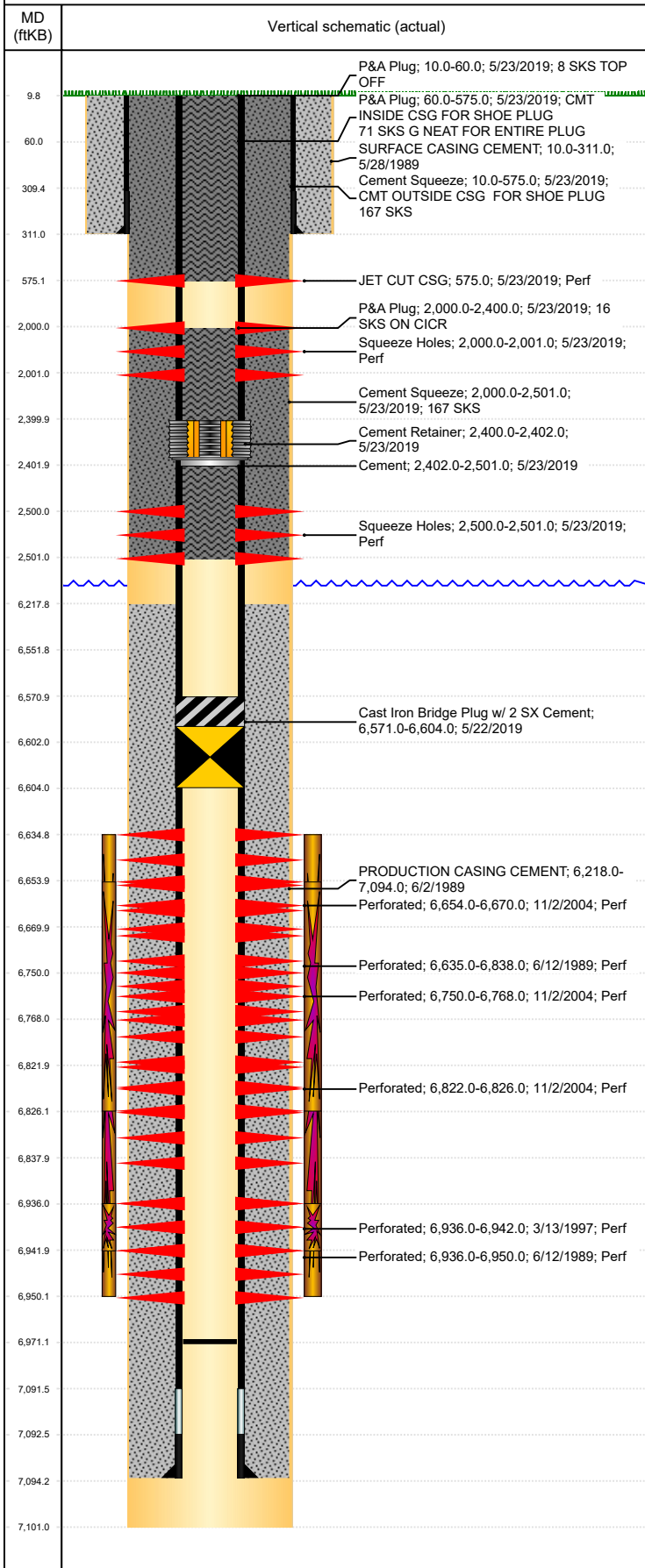


Well Name: WILMOTH PM C05-03

VERTICAL, ORIGINAL HOLE, 7/23/2020 2:20:22 PM



Well Header									
API 05-123-14207		Business Unit DJ BASIN			District 15		Well Config VERTICAL		
KB - GL / MSL (ft... 10.00		Spud Date 5/28/1989		P & A Date 2/5/2020		Well Production Status PA			SoRT Yes
Comment LIMITED ENTRY. MINIMAL DRILLING INFO, USED DATA FROM SCHEMATIC. NIO REFRAC SCREENED OUT ON FLUSH. 30% BOND 6240-6560'. FIELD OPERATIONS NOTICE - FLOWLINES ABANDONED PER RULE 1103, RCVD 6/30/17 & 9/5/17.									
Surface Location (Congressional)									
Qtr 3 NE	Qtr 4 NW	Section 5	Twnshp 4	Twnsh... N	Range 64	Rng E/... W	Actual Latitude (°) 40.34718260		Actual Longitude (°) -104.57623250
Wellbore Sections									
Section Des			Size (in)			Act Top, MD (ftKB)		Act Btm, MD (ftKB)	
SURFACE			12 1/4			10		311	
PRODUCTION			7 7/8			311		7,101	
Casing Strings									
Csg Des			Run Date		OD (in)	Wt/Len (lb/ft)	Grade	Top, MD (ftKB)	MD (ftKB)
Surface			5/28/1989		8 5/8	24.00	?	10.0	311.0
Production			6/2/1989		3 1/2	9.30	N80	10.0	7,094.0
Cement									
Des					Start Date		Top (ftKB)		Btm (ftKB)
SURFACE CASING CEMENT					5/28/1989		10.0		311.0
PRODUCTION CASING CEMENT					6/2/1989		6,218.0		7,094.0
P&A Plug					5/23/2019		2,000.0		2,400.0
					5/23/2019		2,402.0		2,501.0
Cement Squeeze					5/23/2019		2,000.0		2,501.0
Cement Squeeze					5/23/2019		10.0		575.0
P&A Plug					5/23/2019		60.0		575.0
P&A Plug					5/23/2019		10.0		60.0
Zone Statuses									
Zone Name	Status Date	Status	Fluid Type	Job				Prod Method	
NIOBRARA-CO...	5/22/2019	P&A		PLUG AND ABANDON, 5/22/2019 06:00				Flowing	
NIOBRARA	1/10/2005	PR		COMMINGLE ZONES, 1/6/2005 00:00					
NIOBRARA	5/22/2019	P&A		PLUG AND ABANDON, 5/22/2019 06:00					
CODELL	1/10/2005	PR		COMMINGLE ZONES, 1/6/2005 00:00				Flowing	
CODELL	5/22/2019	P&A		PLUG AND ABANDON, 5/22/2019 06:00					
Perforation Data									
Linked Zone		Bnch/Stg	Entered Shot Total	Top (ftKB)		Btm (ftKB)		Date	
CODELL, ORIGINAL HOLE			1	575.00		575.00		5/23/2019	
CODELL, ORIGINAL HOLE			6	2,000.00		2,001.00		5/23/2019	
CODELL, ORIGINAL HOLE			6	2,500.00		2,501.00		5/23/2019	
NIOBRARA, ORIGINAL HOLE			9	6,635.00		6,838.00		6/12/1989	
NIOBRARA, ORIGINAL HOLE			96	6,654.00		6,670.00		11/2/2004	
NIOBRARA, ORIGINAL HOLE			108	6,750.00		6,768.00		11/2/2004	
NIOBRARA, ORIGINAL HOLE			24	6,822.00		6,826.00		11/2/2004	
CODELL, ORIGINAL HOLE			9	6,936.00		6,950.00		6/12/1989	
CODELL, ORIGINAL HOLE		24	6,936.00		6,942.00		3/13/1997		
Stimulation Intervals									
Zone				Start Date		Top (ftKB)		Btm (ftKB)	
NIOBRARA-CODELL, ORIGINAL HOLE				6/15/1989		6,635.0		6,950.0	
				11/3/2004		6,654.0		6,826.0	
CODELL, ORIGINAL HOLE				3/18/1997		6,936.0		6,942.0	
Other In Hole									
Run Date		Des			Make		OD (in)	Top (ftKB)	Btm (ftKB)
5/22/2019		Cast Iron Bridge Plug w/ 2 SX Cement					3 1/2	6,571.0	6,604.0
5/23/2019		Cement Retainer					3 1/2	2,400.0	2,402.0
Logs									
Date		Type				Top, MD (ftKB)		Btm, MD (ftKB)	
6/2/1989		COMPENSATED DENSITY				4,200.0		7,097.0	
6/8/1989		CEMENT BOND				6,100.0		6,988.0	
2/9/2017		GYRO				0.0		6,700.0	

Well Name: WILMOTH PM C05-03

VERTICAL, ORIGINAL HOLE, 7/23/2020 2:20:23 PM

Plug Back Total Depths

