

Foundation Energy Management LLC, Prather 22-12
125-07893

Inspection #688308184

7/15/2020

Routine Inspection



FOUNDATION ENERGY
PRATHER No. 11-12
NW NW SEC. 12-1S-45W
1/4 MILE S OF ROADS
AA & 35 & E INTO
YUMA COUNTY, CO
24-HOUR EMERGENCY CALL: 970-848-0331
1-866-767-3600

FOUNDATION ENERGY
PRATHER No. 21-12
NE NW SEC. 12-1S-45W
1/4 MILE S OF ROADS
AA & 35 & E INTO
YUMA COUNTY, CO
24-HOUR EMERGENCY CALL: 970-848-0331
1-866-767-3600

FOUNDATION ENERGY MANAGEMENT, LLC
PRATHER 12-12
SWNW Sec. 12-T1N-R45W
Co. Rd. AA & 35, 1/4 Mi S. E into
Yuma County, CO
970-848-0331
24-HOUR EMERGENCY CALL:
1-866-767-3600

FOUNDADA
ENERGY MANAGEMEN
PRATHER 22
SESW Sec. 12-T1N-R
Co. Rd. AA & 35, 1/4 Mi S
Yuma County, CO
970-848-0331
24-HOUR EMERGENCY CALL:
1-866-767-3600

Colorado Oil and Gas Conservation Commission
40.07301, -102.36007, 3730.3ft, 62°
07/15/2020 10:08:27 AM

DANGER
NO
SMOKING

DANGER
STARTS
AUTOMATICALLY

FOUNDATION
ENERGY MANAGEMENT, LLC
PRATHER 22-12
SENW Sec. 12-T1N-R45W
Co. Rd. AA & 35, 1/4 Mi S, E into
Yuma County, CO
970-848-0331
24-HOUR EMERGENCY CALL:
1-866-767-3600

Colorado Oil and Gas Conservation Commission
40.07002, -102.35378, 3661.4ft, 171°
07/15/2020 10:44:21 AM



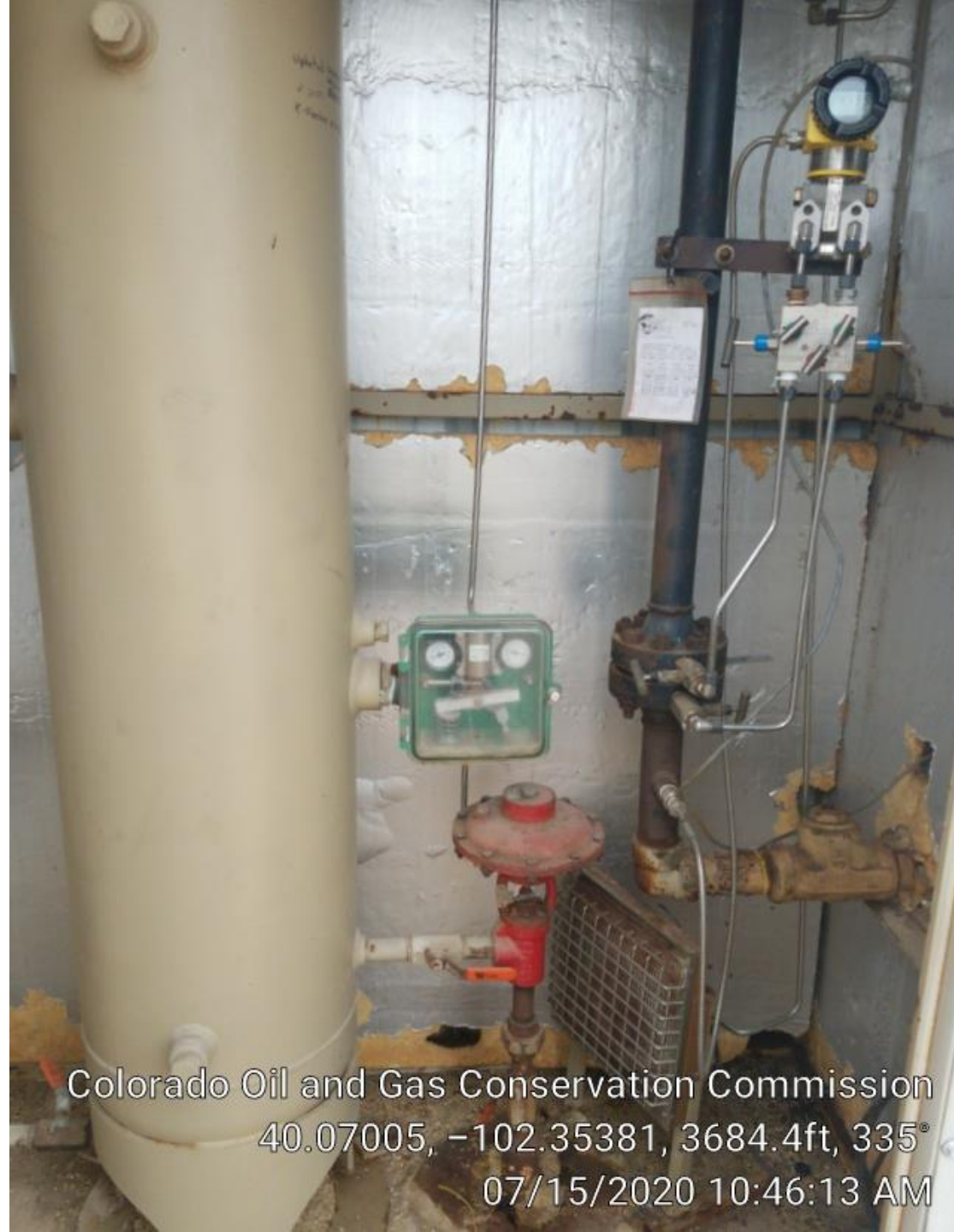
Colorado Oil and Gas Conservation Commission
40.07001, -102.35381, 3671.3ft, 185°
07/15/2020 10:44:31 AM



Colorado Oil and Gas Conservation Commission
40.06999, -102.35387, 3674.5ft, 70°
07/15/2020 10:44:45 AM



Colorado Oil and Gas Conservation Commission
40.07003, -102.35372, 3677.8ft, 292°
07/15/2020 10:45:11 AM



Colorado Oil and Gas Conservation Commission
40.07005, -102.35381, 3684.4ft, 335°
07/15/2020 10:46:13 AM

IMPACT ANALYTICAL SYSTEMS INC.
 10100 E. 1st Ave.
 Suite 100
 Denver, CO 80231
 303-437-0150
 www.impact-analytical.com

Motor S/N
 7200-4400

Station Name: PERTHA 22-18
 Station No: PER 22-18 Producer: 22-18-18
 Sec: 12 Township: 12N Range: 5E 1st
 DHT: 300 Temp Range: --- Tube Size: 2.047
 State: CO #Absolute: 12.7 1012

Date	Office Plate Size	Motor Test Date	Sample Date
1-28-08	2.375	1-28-08	1-28-08
8-26-08	2.375	8-26-08	8-26-08
1-19-11	2x0.375	1-19-11	1-19-11
12-2-10	2x0.375	12-2-10	12-2-10
7-11-13	2x0.375	7-11-13	7-11-13
9-25-14	2x0.375	9-25-14	9-25-14
9-25-15	2x0.375	9-25-15	9-25-15

303-437-0150

Colorado Oil and Gas Conservation Commission
 40.07004, -102.35382, 3684.4ft, 5°
 07/15/2020 10:46:26 AM