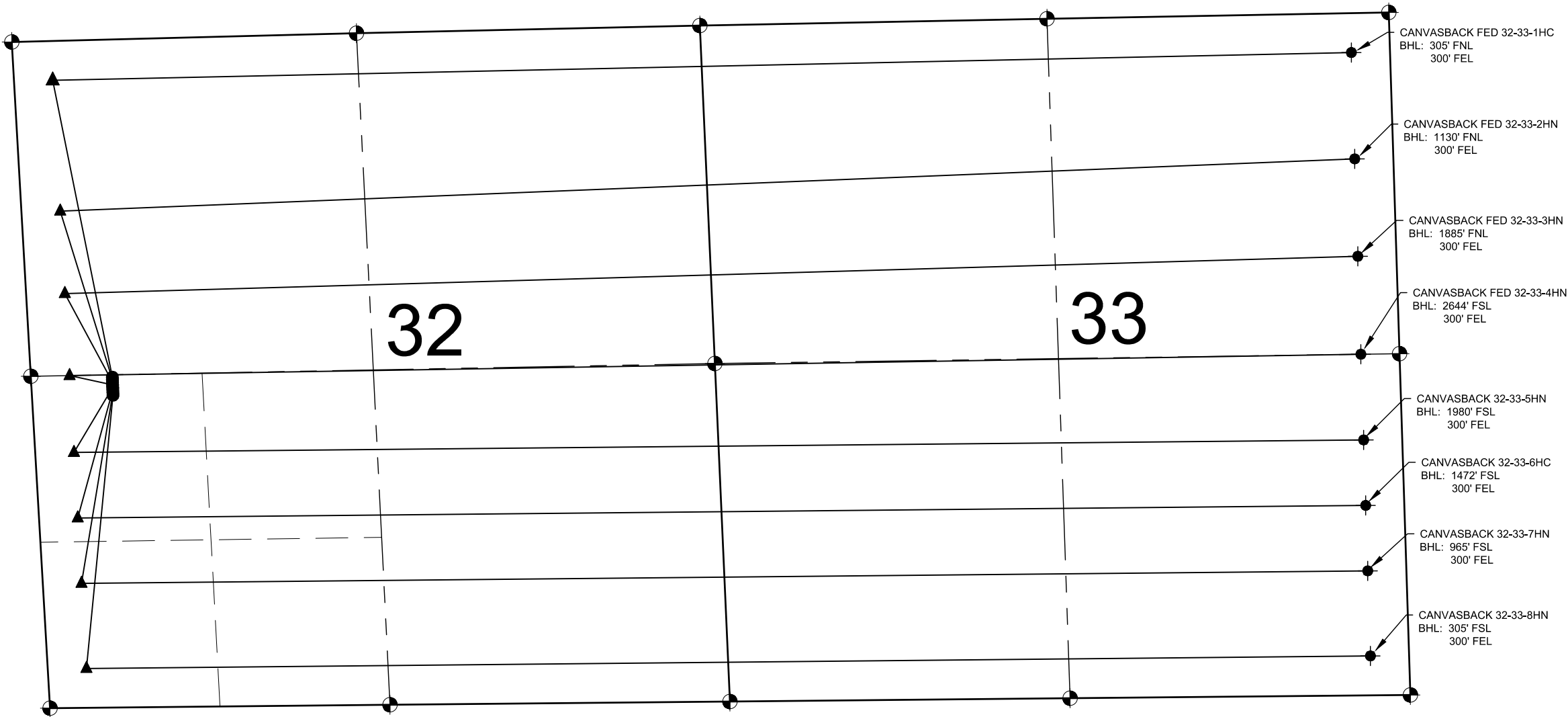


CANVASBACK PAD
MULTI-WELL PLAN



NOTES:

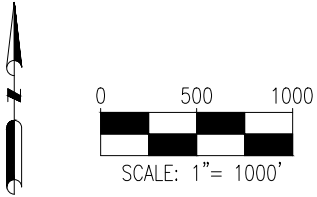
1. THIS FIELD SURVEY CONFORMS TO THE MINIMUM STANDARDS SET BY THE COGCC, RULE NO. 215
2. ALL DISTANCES AND BEARINGS SHOWN HEREON ARE GROUND VALUES AS GPS MEASURED IN THE FIELD, WITH TIES TO WELLS MEASURED PERPENDICULAR TO LINES SHOWN HEREON. THIS LOW DISTORTION PROJECTION (LDP) IS BASED ON THE NORTH AMERICAN DATUM OF 1983, U.S. SURVEY FOOT WITH A LATITUDE ORIGIN OF 40.655085°N, A CENTRAL MERIDIAN LONGITUDE OF 104.086861°W, AND A SCALE FACTOR ON THE CENTRAL MERIDIAN OF 1.000232 (EXACT). THE LDP BASIS OF BEARINGS IS GEODETIC NORTH.
3. FIELD VERIFICATION OF MONUMENTS COMPLETED WITHIN 1 YEAR OF SIGNATURE DATE, UNLESS OTHERWISE NOTED.

NOTES:

CANVASBACK FED 32-33-1HC TO BE AT 2561' FSL & 631' FWL.
BOTTOM HOLE AT 305' FNL & 300' FEL, SEC. 33.
CANVASBACK FED 32-33-2HN TO BE AT 2541' FSL & 630' FWL.
BOTTOM HOLE AT 1130' FNL & 300' FEL, SEC. 33.
CANVASBACK FED 32-33-3HN TO BE AT 2521' FSL & 630' FWL.
BOTTOM HOLE AT 1885' FNL & 300' FEL, SEC. 33.
CANVASBACK FED 32-33-4HN TO BE AT 2501' FSL & 629' FWL.
BOTTOM HOLE AT 2644' FSL & 300' FEL, SEC. 33.
CANVASBACK 32-33-5HN TO BE AT 2481' FSL & 629' FWL.
BOTTOM HOLE AT 1980' FSL & 300' FEL, SEC. 33.
CANVASBACK 32-33-6HC TO BE AT 2461' FSL & 628' FWL.
BOTTOM HOLE AT 1472' FSL & 300' FEL, SEC. 33.
CANVASBACK 32-33-7HN TO BE AT 2441' FSL & 628' FWL.
BOTTOM HOLE AT 965' FSL & 300' FEL, SEC. 33.
CANVASBACK 32-33-8HN TO BE AT 2421' FSL & 628' FWL.
BOTTOM HOLE AT 305' FSL & 300' FEL, SEC. 33.

LEGEND

- = EXISTING MONUMENT
- = CALCULATED POSITION
- = PROPOSED WELL
- ⊕ = BOTTOM HOLE
- ▲ = LANDING POINT
- ◆ = EXISTING WELL
- BHL = BOTTOM HOLE



8620 Wolff Court
Westminster, CO 80031
(303) 928-7128
www.ascentgeomatics.com

FIELD DATE:

10-19-18

DRAWING DATE:

03-03-20

BY:

CSG

CHECKED:

IJM

WELL NAME:

CANVASBACK PAD

SURFACE LOCATION:

NW 1/4 SW 1/4 SEC. 32, T9N, R60W, 6TH P.M.

WELD COUNTY, COLORADO

PREPARED FOR:

