

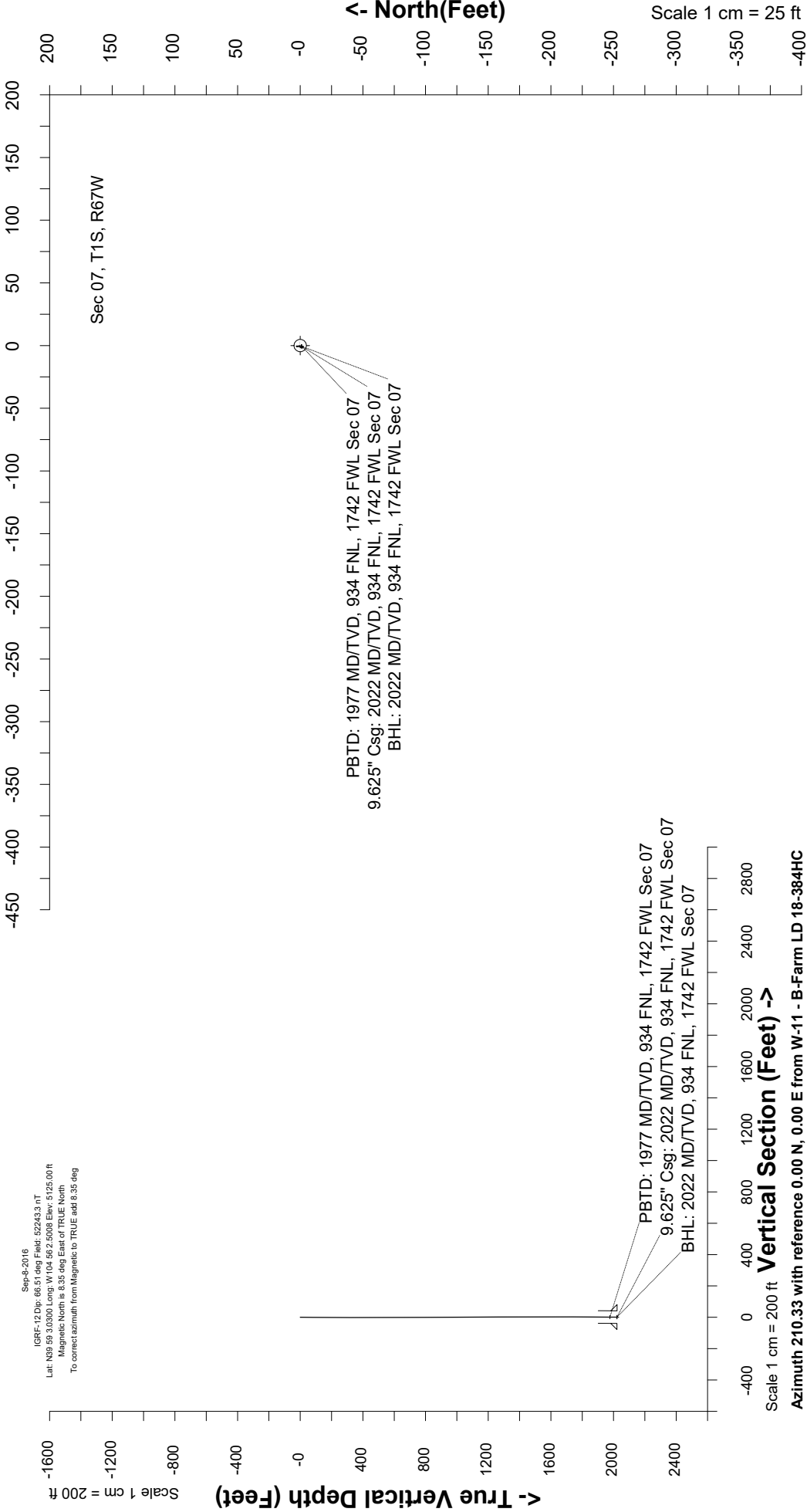
Great Western Operating Company, LLC

Created by	mmount
Date plotted	29-Apr-2020
Plot reference is B-Farm LD 18-384HC (AWB).	
Ref wellpath is B-Farm LD 18-384HC (AWP#1).	
Coordinates are in Feet reference W-11 - B-Farm LD 18-384HC.	
True Vertical Depths are reference Rig Datum.	
Measured Depths are reference Rig Datum.	
Rig Datum: Actual Datum #1	
Rig Datum to Mean Sea Level: 5131.00 ft	
Plot North is aligned to TRUE North.	

Location	Colorado	Slot	W-11 - B-Farm LD 18-384HC
Field	Wattenburg	Well	B-Farm LD 18-384HC
Installation	B-Farm	Wellbore	B-Farm LD 18-384HC (AWB)

Scale 1 cm = 25 ft

East (Feet) ->



Great Western Operating Co, LLC
 Directional Survey Report
 Wellpath: B-Farm LD 18-384HC
 MDs and TVDs are from Rig Floor 5131.0ft above Mean Sea Level

MD[ft]	Inc[deg]	Azi[deg]	TVD[ft]	North[ft]	East[ft]	DLS [deg/100ft]	Vertical Section[ft]
0.00	0.00	0.00	0.00	0.00	0.00		0.00
84.00	1.14	346.14	83.99	0.81	-0.20	0.00	-0.60
172.00	0.70	0.11	171.98	2.20	-0.41	0.00	-1.69
261.00	0.26	17.69	260.98	2.93	-0.35	0.00	-2.36
353.00	0.31	278.02	352.98	3.17	-0.53	0.00	-2.47
443.00	0.53	204.37	442.98	2.82	-0.94	0.00	-1.96
533.00	0.83	154.53	532.97	1.86	-0.83	0.00	-1.18
623.00	0.22	278.02	622.97	1.29	-0.72	0.00	-0.75
713.00	0.40	171.67	712.97	1.00	-0.85	0.00	-0.44
803.00	0.04	278.02	802.97	0.70	-0.84	0.00	-0.18
893.00	0.31	199.45	892.97	0.47	-0.95	0.00	0.07
983.00	0.31	247.70	982.97	0.15	-1.25	0.00	0.50
1073.00	0.40	183.27	1072.96	-0.26	-1.50	0.00	0.98
1163.00	0.22	242.07	1162.96	-0.65	-1.67	0.00	1.40
1253.00	0.04	22.43	1252.96	-0.70	-1.81	0.00	1.52
1343.00	0.18	76.66	1342.96	-0.64	-1.66	0.00	1.39
1433.00	0.26	185.56	1432.96	-0.81	-1.54	0.00	1.48
1522.00	0.57	225.46	1521.96	-1.32	-1.88	0.00	2.09
1612.00	0.35	124.56	1611.96	-1.79	-1.97	0.00	2.54
1702.00	0.40	91.87	1701.96	-1.96	-1.43	0.00	2.41
1792.00	0.44	49.86	1791.95	-1.75	-0.85	0.00	1.94
1882.00	0.01	98.02	1881.95	-1.52	-0.58	0.00	1.61
1965.00	0.35	2.92	1964.95	-1.27	-0.56	0.00	1.38
2022.00	0.35	2.92	2021.95	-0.92	-0.54	0.00	1.07