



Kerr-McGee Oil & Gas Onshore LP

1099 18th Street
Denver, CO 80202
720-929-6000

June 18, 2020

Jeff Robbins
Director, Colorado Oil and Gas Conservation Commission
Department of Natural Resources – The Chancery Building
1120 Lincoln Street, Suite 801
Denver, CO 80203

Re: **30 Day Certification Letter - 318A.e**
BEIERLE 26-16HZ (Doc No. 402363108)
Township 1 North, Range 66 West
Section 26: NWNE
Unit Acreage: 640 Acres
Proposed Spacing Unit:
01N66W SEC 14: S2SE;
01N66W SEC 23: E2;
01N66W SEC 26: NE, N2SE
Weld County, Colorado

Dear Director Robbins:

Kerr-McGee Oil and Gas Onshore LP (“KMG”) hereby certifies that a thirty (30) day notice has been given by certified mail to all mineral owners in the proposed wellbore spacing unit. We have not received any objections to such well location, proposed spacing unit, or additional producing formation. KMG hereby respectfully requests approval of this boundary well.

If you have any questions or issues regarding this permit, please contact me at (720) 929-3167.

Sincerely,

Kerr-McGee Oil and Gas Onshore LP

A handwritten signature in black ink that reads 'Samantha Petite'.

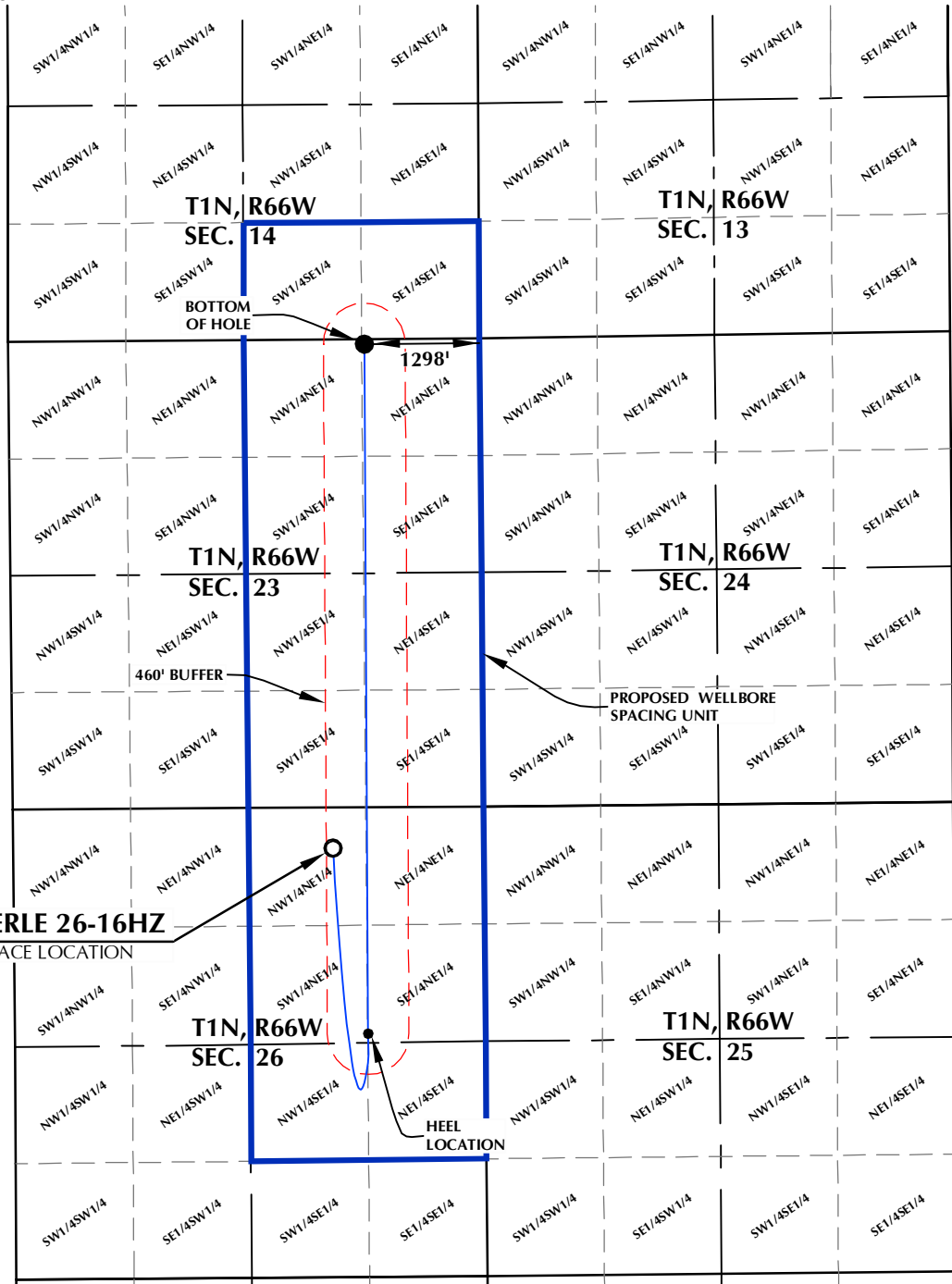
Samantha Petite
Regulatory Analyst

Enclosure

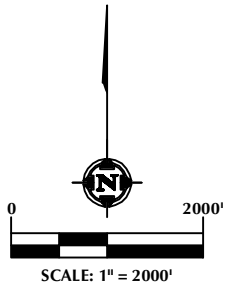
DISTANCE FROM COMPLETED
PORTION OF WELLBORE TO
NEAREST UNIT BOUNDARY= 1298'

BEIERLE 26-16HZ WELLBORE SPACING UNIT

SURFACE LOCATION: NAD 83
GROUND ELEVATION= 5120.4'
LATITUDE= 40.028279°
LONGITUDE= -104.741028°
LATITUDE= 40°01'41.806"
LONGITUDE= -104°44'27.701"
HEEL LOCATION: NAD 83
LATITUDE= 40.022540°
LONGITUDE= -104.739678°
LATITUDE= 40°01'21.144"
LONGITUDE= -104°44'22.839"
BOTTOM HOLE LOCATION: NAD 83
LATITUDE= 40.043856°
LONGITUDE= -104.739598°
LATITUDE= 40°02'37.882"
LONGITUDE= -104°44'22.553"



BEIERLE 26-16HZ
SURFACE LOCATION



NOTES:

1. DRAWING LATITUDE AND LONGITUDE COORDINATES ARE NAD 83 (2011)(EPOCH:2010).
2. ELEVATION BASED ON NAVD88 (GEOID12B).
3. BASIS OF BEARING DERIVED FROM COLORADO COORDINATE SYSTEM OF 1983 NORTH ZONE.
4. ALL MEASURED DISTANCES ARE GRID.
COMBINED SCALE FACTOR: .99972164 CALCULATED FROM THE N. 1/4 CORNER OF SECTION 26, T1N, R66W.

WELL PAD - BEIERLE 2-26HZ

BEIERLE 26-16HZ
WELLBORE SPACING UNIT
460' FNL & 1699' FEL NWN (SURFACE)
2550' FNL & 1321' FEL SENE (HEEL)
LOCATED IN SECTION 26
50' FNL & 1298' FEL NENE (BOTTOM)
LOCATED IN SECTION 23
T1N, R66W, 6TH P.M.
WELD COUNTY, COLORADO

**Kerr-McGee Oil &
Gas Onshore L.P.**
1099 18th Street
Denver, Colorado 80202



CONSULTING, LLC

SHERIDAN OFFICE
1095 Saberton Avenue
Sheridan, Wyoming 82801
Phone 307-674-0609

LOVELAND OFFICE
6706 North Franklin Avenue
Loveland, Colorado 80538
Phone 970-776-4331

DRAFTED BY:	LMO	CHECKED BY:	RKF
DATE DRAFTED:	8/22/18	DATE SURVEYED:	5/7/18
REVISED:	3/17/2020	FILE NAME:	17-102