



# Kerr-McGee Oil & Gas Onshore LP

1099 18<sup>th</sup> Street  
Denver, CO 80202  
720-929-6000

June 18, 2020

Jeff Robbins  
Director, Colorado Oil and Gas Conservation Commission  
Department of Natural Resources – The Chancery Building  
1120 Lincoln Street, Suite 801  
Denver, CO 80203

Re: **30 Day Certification Letter - 318A.e**  
BEIERLE 26-15HZ (Doc No. 402363104)  
Township 1 North, Range 66 West  
Section 26: NWNE  
Unit Acreage: 640 Acres  
Proposed Spacing Unit:  
01N66W SEC 14: S2SE;  
01N66W SEC 23: E2;  
01N66W SEC 26: NE4, N2SE  
Weld County, Colorado

Dear Director Robbins:

Kerr-McGee Oil and Gas Onshore LP (“KMG”) hereby certifies that a thirty (30) day notice has been given by certified mail to all mineral owners in the proposed wellbore spacing unit. We have not received any objections to such well location, proposed spacing unit, or additional producing formation. KMG hereby respectfully requests approval of this boundary well.

If you have any questions or issues regarding this permit, please contact me at (720) 929-3167.

Sincerely,

**Kerr-McGee Oil and Gas Onshore LP**

A handwritten signature in black ink that reads 'Samantha Petite'.

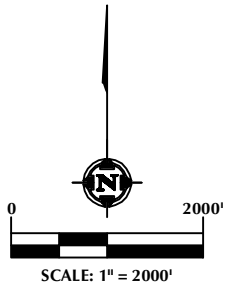
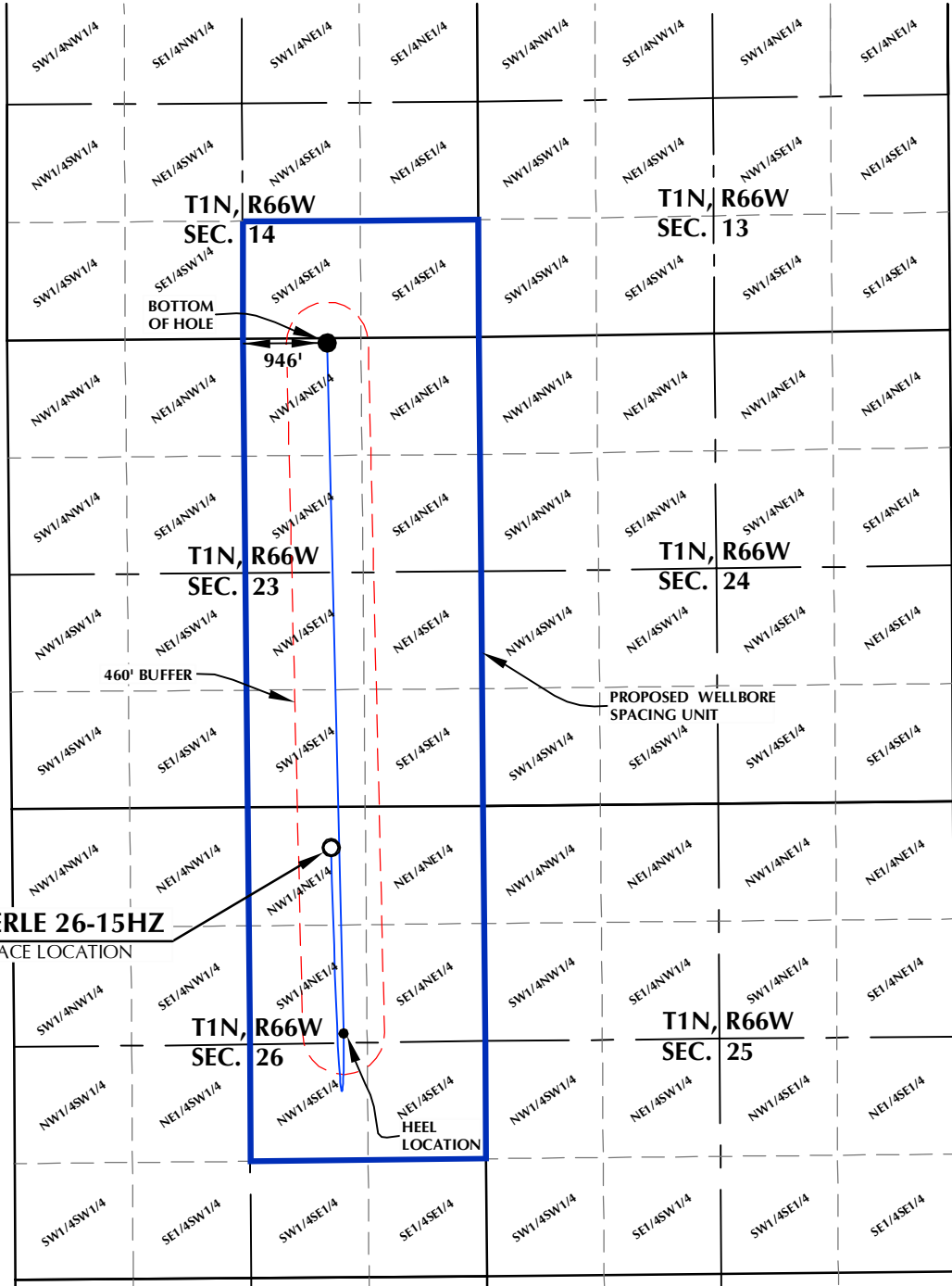
Samantha Petite  
Regulatory Analyst

Enclosure

DISTANCE FROM COMPLETED  
PORTION OF WELLBORE TO  
NEAREST UNIT BOUNDARY= 946'

# BEIERLE 26-15HZ WELLBORE SPACING UNIT

SURFACE LOCATION: NAD 83  
GROUND ELEVATION= 5120.5'  
LATITUDE= 40.028279°  
LONGITUDE= -104.741082°  
LATITUDE= 40°01'41.806"  
LONGITUDE= -104°44'27.894"  
HEEL LOCATION: NAD 83  
LATITUDE= 40.022541°  
LONGITUDE= -104.740642°  
LATITUDE= 40°01'21.149"  
LONGITUDE= -104°44'26.310"  
BOTTOM HOLE LOCATION: NAD 83  
LATITUDE= 40.043857°  
LONGITUDE= -104.741059°  
LATITUDE= 40°02'37.885"  
LONGITUDE= -104°44'27.812"



## NOTES:

1. DRAWING LATITUDE AND LONGITUDE COORDINATES ARE NAD 83 (2011)(EPOCH:2010).
2. ELEVATION BASED ON NAVD88 (GEOID12B).
3. BASIS OF BEARING DERIVED FROM COLORADO COORDINATE SYSTEM OF 1983 NORTH ZONE.
4. ALL MEASURED DISTANCES ARE GRID.  
COMBINED SCALE FACTOR: .99972164 CALCULATED FROM THE N. 1/4 CORNER OF SECTION 26, T1N, R66W.

## WELL PAD - BEIERLE 2-26HZ

BEIERLE 26-15HZ  
WELLBORE SPACING UNIT  
460' FNL & 1714' FEL NWNE (SURFACE)  
2550' FNL & 1591' FEL SWNE (HEEL)  
LOCATED IN SECTION 26  
50' FNL & 1707' FEL NWNE (BOTTOM)  
LOCATED IN SECTION 23  
T1N, R66W, 6TH P.M.  
WELD COUNTY, COLORADO

**Kerr-McGee Oil &  
Gas Onshore L.P.**  
1099 18th Street  
Denver, Colorado 80202



## CONSULTING, LLC

SHERIDAN OFFICE  
1095 Saberton Avenue  
Sheridan, Wyoming 82801  
Phone 307-674-0609

LOVELAND OFFICE  
6706 North Franklin Avenue  
Loveland, Colorado 80538  
Phone 970-776-4331

DRAFTED BY:	LMO	CHECKED BY:	RKF
DATE DRAFTED:	8/22/18	DATE SURVEYED:	5/7/18
REVISED:	3/17/2020	FILE NAME:	17-102