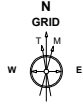


Cub Creek Energy, LLC

Location	Weld County, CO	Slot	KNIGHT 7
Field	WATTENBERG	Well	W KNIGHT 7
Installation	Knight Pad	Wellbore	W KNIGHT 7 (PWB)



Nov-6-2017
 EMM-2015 Dip: 66.59 deg Field: 52154.0 nT
 Lat: N40 11 52.9440 Long: W105 2 31.0920 Elev: 4993.00 ft
 Magnetic North is 8.54 deg East of True North
 GRID North is 0.30 deg East of True North
 To correct azimuth from True to GRID subtract 0.30 deg
 To correct azimuth from Magnetic to GRID add 8.25 deg

Created by sean.dolfinger
 Date plotted 14-Jul-2020
 Plot reference is W KNIGHT 7 (PWB).
 Ref wellpath is W KNIGHT 7 (PWP#1).
 Coordinates are in Feet reference KNIGHT 7.
 True Vertical Depths are reference Rig Datum.
 Measured Depths are reference Rig Datum.
 Rig Datum: Planned Datum #1
 Rig Datum to Mean Sea Level: 5011.00 ft.
 Plot North is aligned to GRID North.

Scale 1 cm = 400 ft
 -800 0 800

Surface 0.00 N 0.00 E
 Knight 7 EP

WELL PROFILE DATA

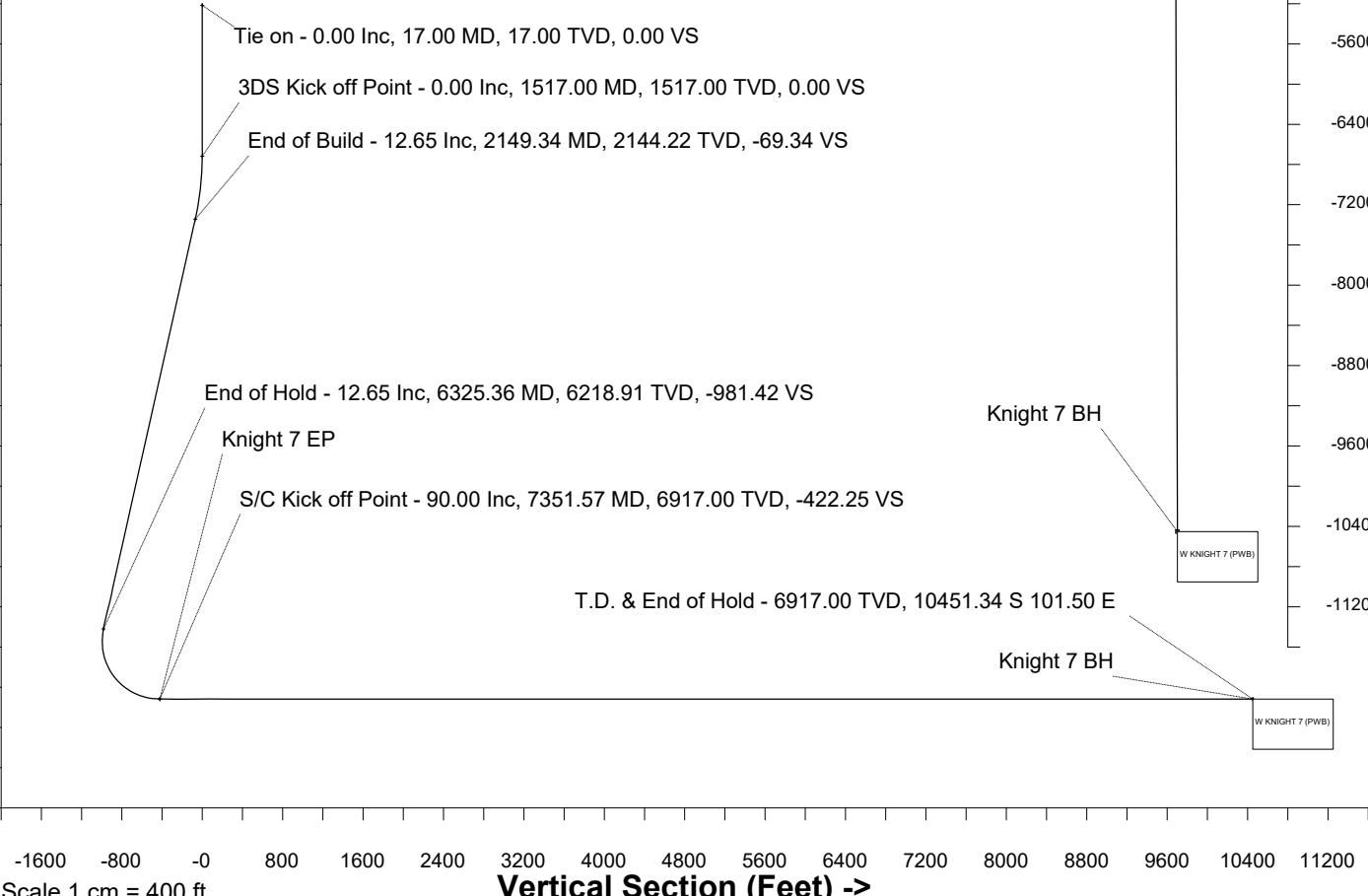
Point	MD	Inc	Azi	TVD	North	East	deg/100ft	V. Sect
Tie on	17.00	0.00	0.00	17.00	S 0.00	W 0.00		0.00
KOP	1517.00	0.00	3.44	1517.00	S 0.00	W 0.00	0.00	0.00
End of Build	2149.34	12.65	3.44	2144.22	N 69.38	E 4.17	2.00	-69.34
End of Hold	6325.36	12.65	3.44	6218.91	N 982.04	E 59.01	0.00	-981.42
Target Knight 7 EP	7351.57	90.00	179.84	6917.00	N 422.96	E 70.45	10.00	-422.25
T.D. & Target Kni... BH	18225.91	90.00	179.84	6917.00	S 10451.34	E 101.50	0.00	10451.83

Scale 1 cm = 400 ft
 -800
 0
 800
 1600
 2400
 3200
 4000
 4800
 5600
 6400
 7200
 8000

North(Feet)
 -800
 -1600
 -2400
 -3200
 -4000
 -4800
 -5600
 -6400
 -7200
 -8000
 -8800
 -9600
 -10400
 -11200

Scale 1 cm = 400 ft

True Vertical Depth (Feet)



Scale 1 cm = 400 ft
 -1600 -800 -0 800 1600 2400 3200 4000 4800 5600 6400 7200 8000 8800 9600 10400 11200
 Vertical Section (Feet) ->
 Azimuth 179.44 with reference 0.00 N, 0.00 E from KNIGHT 7

SYSDRILL
Well Design Combined Report
Wellbore: W KNIGHT 7 (PWB)



Wellhead Details							
Name	Latitude	Longitude	Northing	Easting	North	East	Slot Elevation Above Ground
KNIGHT 7	40.19771000	-105.04197000	1315198.6904	3127946.1699	120.22S	0.62E	0.00

Declination		
Date	Source	Time
Nov-6-2017	EMM-2015	14:52

Installation Details						
Name	Installation Position (Latitude)	Installation Position (Longitude)	Northing	Easting	Coord System Name	North Alignment
Knight Pad	40.19804000	-105.04197000	1315318.9022	3127945.5490	NAD83 Based Colorado State Planes, Northern Zone, US Feet	Grid

Summary Wellpath								
MD[ft]	Inc[deg]	Azi[deg]	TVD[ft]	Vertical Depth SS	North[ft]	East[ft]	Dogleg [deg/100ft]	Vertical Section[ft]
17.00	0.00	0.00	17.00	-4994.00	0.00N	0.00E		0.00
1517.00	0.00	3.44	1517.00	-3494.00	0.00N	0.00E	==>	0.00
2149.34	12.65	3.44	2144.22	-2866.78	69.38N	4.17E	2.00	-69.34
6325.36	12.65	3.44	6218.91	1207.91	982.04N	59.01E	==>	-981.42
7351.57	90.00	179.84	6917.00	1906.00	422.96N	70.45E	10.00	-422.25
18225.91	90.00	179.84	6917.00	1906.00	10451.34S	101.50E	==>	10451.83

Interpolated Wellpath									
MD[ft]	Inc[deg]	Azi[deg]	TVD[ft]	North[ft]	East[ft]	Dogleg [deg/100ft]	Vertical Section[ft]	Station Position (Latitude)	Station Position (Longitude)
0.00	0.00	0.00	0.00	0.00N	0.00E		0.00	40.19771000	-105.04197000
17.00	0.00	0.00	17.00	0.00N	0.00E	==>	0.00	40.19771000	-105.04197000
100.00	0.00	0.00	100.00	0.00N	0.00E	==>	0.00	40.19771000	-105.04197000
200.00	0.00	0.00	200.00	0.00N	0.00E	==>	0.00	40.19771000	-105.04197000
300.00	0.00	0.00	300.00	0.00N	0.00E	==>	0.00	40.19771000	-105.04197000
400.00	0.00	0.00	400.00	0.00N	0.00E	==>	0.00	40.19771000	-105.04197000
500.00	0.00	0.00	500.00	0.00N	0.00E	==>	0.00	40.19771000	-105.04197000
600.00	0.00	0.00	600.00	0.00N	0.00E	==>	0.00	40.19771000	-105.04197000
700.00	0.00	0.00	700.00	0.00N	0.00E	==>	0.00	40.19771000	-105.04197000
800.00	0.00	0.00	800.00	0.00N	0.00E	==>	0.00	40.19771000	-105.04197000
900.00	0.00	0.00	900.00	0.00N	0.00E	==>	0.00	40.19771000	-105.04197000
1000.00	0.00	0.00	1000.00	0.00N	0.00E	==>	0.00	40.19771000	-105.04197000
1100.00	0.00	0.00	1100.00	0.00N	0.00E	==>	0.00	40.19771000	-105.04197000
1200.00	0.00	0.00	1200.00	0.00N	0.00E	==>	0.00	40.19771000	-105.04197000
1300.00	0.00	0.00	1300.00	0.00N	0.00E	==>	0.00	40.19771000	-105.04197000
1400.00	0.00	0.00	1400.00	0.00N	0.00E	==>	0.00	40.19771000	-105.04197000
1500.00	0.00	0.00	1500.00	0.00N	0.00E	==>	0.00	40.19771000	-105.04197000
1517.00	0.00	3.44	1517.00	0.00N	0.00E	==>	0.00	40.19771000	-105.04197000
1617.00	2.00	3.44	1616.98	1.74N	0.10E	2.00	-1.74	40.19771478	-105.04196959
1717.00	4.00	3.44	1716.84	6.97N	0.42E	2.00	-6.96	40.19772912	-105.04196837
1817.00	6.00	3.44	1816.45	15.67N	0.94E	2.00	-15.66	40.19775299	-105.04196634
1917.00	8.00	3.44	1915.70	27.83N	1.67E	2.00	-27.81	40.19778637	-105.04196350
2017.00	10.00	3.44	2014.47	43.44N	2.61E	2.00	-43.42	40.19782922	-105.04195985
2117.00	12.00	3.44	2112.62	62.49N	3.75E	2.00	-62.45	40.19788148	-105.04195540
2149.34	12.65	3.44	2144.22	69.38N	4.17E	2.00	-69.34	40.19790039	-105.04195379
2217.00	12.65	3.44	2210.24	84.17N	5.06E	==>	-84.11	40.19794096	-105.04195034
2317.00	12.65	3.44	2307.81	106.02N	6.37E	==>	-105.95	40.19800093	-105.04194523
2417.00	12.65	3.44	2405.38	127.88N	7.68E	==>	-127.80	40.19806091	-105.04194013
2517.00	12.65	3.44	2502.96	149.73N	9.00E	==>	-149.64	40.19812088	-105.04193502
2617.00	12.65	3.44	2600.53	171.59N	10.31E	==>	-171.48	40.19818085	-105.04192992
2717.00	12.65	3.44	2698.11	193.44N	11.62E	==>	-193.32	40.19824082	-105.04192481
2817.00	12.65	3.44	2795.68	215.30N	12.94E	==>	-215.16	40.19830079	-105.04191971

All data is in Feet unless otherwise stated
Coordinates are from Slot MD's are from Rig and TVD's are from Rig (Planned Datum #1 5011.0ft above Mean Sea Level)
Vertical Section is from 0.00N 0.00E on azimuth 179.44 degrees
Bottom hole distance is 10451.83 Feet on azimuth 179.44 degrees from Wellhead
Calculation method uses Minimum Curvature method
Prepared by
Date Printed: 14-Jul-2020

SYSDRILL
Well Design Combined Report
Wellbore: W KNIGHT 7 (PWB)



Interpolated Wellpath									
MD[ft]	Inc[deg]	Azi[deg]	TVD[ft]	North[ft]	East[ft]	Dogleg [deg/100ft]	Vertical Section[ft]	Station Position (Latitude)	Station Position (Longitude)
2917.00	12.65	3.44	2893.25	237.15N	14.25E	==>	-237.00	40.19836077	-105.04191460
3017.00	12.65	3.44	2990.83	259.00N	15.56E	==>	-258.84	40.19842074	-105.04190950
3117.00	12.65	3.44	3088.40	280.86N	16.88E	==>	-280.68	40.19848071	-105.04190439
3217.00	12.65	3.44	3185.97	302.71N	18.19E	==>	-302.52	40.19854068	-105.04189929
3317.00	12.65	3.44	3283.55	324.57N	19.50E	==>	-324.36	40.19860065	-105.04189418
3417.00	12.65	3.44	3381.12	346.42N	20.82E	==>	-346.21	40.19866062	-105.04188908
3517.00	12.65	3.44	3478.70	368.28N	22.13E	==>	-368.05	40.19872060	-105.04188397
3617.00	12.65	3.44	3576.27	390.13N	23.44E	==>	-389.89	40.19878057	-105.04187887
3717.00	12.65	3.44	3673.84	411.99N	24.76E	==>	-411.73	40.19884054	-105.04187376
3817.00	12.65	3.44	3771.42	433.84N	26.07E	==>	-433.57	40.19890051	-105.04186866
3917.00	12.65	3.44	3868.99	455.70N	27.38E	==>	-455.41	40.19896048	-105.04186355
4017.00	12.65	3.44	3966.56	477.55N	28.70E	==>	-477.25	40.19902046	-105.04185845
4117.00	12.65	3.44	4064.14	499.41N	30.01E	==>	-499.09	40.19908043	-105.04185334
4217.00	12.65	3.44	4161.71	521.26N	31.32E	==>	-520.93	40.19914040	-105.04184824
4317.00	12.65	3.44	4259.29	543.12N	32.63E	==>	-542.77	40.19920037	-105.04184313
4417.00	12.65	3.44	4356.86	564.97N	33.95E	==>	-564.62	40.19926034	-105.04183803
4517.00	12.65	3.44	4454.43	586.83N	35.26E	==>	-586.46	40.19932031	-105.04183292
4617.00	12.65	3.44	4552.01	608.68N	36.57E	==>	-608.30	40.19938029	-105.04182782
4717.00	12.65	3.44	4649.58	630.54N	37.89E	==>	-630.14	40.19944026	-105.04182271
4817.00	12.65	3.44	4747.15	652.39N	39.20E	==>	-651.98	40.19950023	-105.04181761
4917.00	12.65	3.44	4844.73	674.25N	40.51E	==>	-673.82	40.19956020	-105.04181250
5017.00	12.65	3.44	4942.30	696.10N	41.83E	==>	-695.66	40.19962017	-105.04180740
5117.00	12.65	3.44	5039.88	717.96N	43.14E	==>	-717.50	40.19968015	-105.04180229
5217.00	12.65	3.44	5137.45	739.81N	44.45E	==>	-739.34	40.19974012	-105.04179719
5317.00	12.65	3.44	5235.02	761.66N	45.77E	==>	-761.18	40.19980009	-105.04179208
5417.00	12.65	3.44	5332.60	783.52N	47.08E	==>	-783.03	40.19986006	-105.04178698
5517.00	12.65	3.44	5430.17	805.37N	48.39E	==>	-804.87	40.19992003	-105.04178187
5617.00	12.65	3.44	5527.75	827.23N	49.71E	==>	-826.71	40.19998000	-105.04177677
5717.00	12.65	3.44	5625.32	849.08N	51.02E	==>	-848.55	40.20003998	-105.04177166
5817.00	12.65	3.44	5722.89	870.94N	52.33E	==>	-870.39	40.20009995	-105.04176656
5917.00	12.65	3.44	5820.47	892.79N	53.65E	==>	-892.23	40.20015992	-105.04176145
6017.00	12.65	3.44	5918.04	914.65N	54.96E	==>	-914.07	40.20021989	-105.04175634
6117.00	12.65	3.44	6015.61	936.50N	56.27E	==>	-935.91	40.20027986	-105.04175124
6217.00	12.65	3.44	6113.19	958.36N	57.59E	==>	-957.75	40.20033984	-105.04174613
6317.00	12.65	3.44	6210.76	980.21N	58.90E	==>	-979.59	40.20039981	-105.04174103
6325.36	12.65	3.44	6218.91	982.04N	59.01E	==>	-981.42	40.20040482	-105.04174060
6417.00	3.55	12.97	6309.55	994.85N	60.25E	10.00	-994.21	40.20043995	-105.04173592
6517.00	6.59	172.83	6409.38	992.16N	61.67E	10.00	-991.51	40.20043256	-105.04173091
6617.00	16.56	177.12	6507.22	972.18N	63.10E	10.00	-971.52	40.20037770	-105.04172613
6717.00	26.55	178.22	6600.11	935.51N	64.52E	10.00	-934.84	40.20027702	-105.04172175
6817.00	36.55	178.75	6685.22	883.27N	65.87E	10.00	-882.59	40.20013360	-105.04171789
6917.00	46.55	179.07	6759.96	817.04N	67.11E	10.00	-816.35	40.19995178	-105.04171466
7017.00	56.55	179.30	6822.07	738.83N	68.21E	10.00	-738.13	40.19973709	-105.04171218
7117.00	66.55	179.49	6869.65	651.03N	69.13E	10.00	-650.33	40.19949606	-105.04171050
7217.00	76.54	179.64	6901.27	556.29N	69.84E	10.00	-555.59	40.19923601	-105.04170969
7317.00	86.54	179.79	6915.96	457.51N	70.33E	10.00	-456.80	40.19896484	-105.04170977
7351.57	90.00	179.84	6917.00	422.96N	70.45E	10.00	-422.25	40.19887000	-105.04171000
7417.00	90.00	179.84	6917.00	357.53N	70.63E	==>	-356.83	40.19869040	-105.04171054
7517.00	90.00	179.84	6917.00	257.53N	70.92E	==>	-256.83	40.19841590	-105.04171137
7617.00	90.00	179.84	6917.00	157.53N	71.20E	==>	-156.83	40.19814140	-105.04171220
7717.00	90.00	179.84	6917.00	57.53N	71.49E	==>	-56.83	40.19786690	-105.04171303
7817.00	90.00	179.84	6917.00	42.47S	71.78E	==>	43.17	40.19759240	-105.04171385
7917.00	90.00	179.84	6917.00	142.47S	72.06E	==>	143.16	40.19731790	-105.04171468
8017.00	90.00	179.84	6917.00	242.47S	72.35E	==>	243.16	40.19704341	-105.04171551
8117.00	90.00	179.84	6917.00	342.47S	72.63E	==>	343.16	40.19676891	-105.04171634
8217.00	90.00	179.84	6917.00	442.47S	72.92E	==>	443.16	40.19649441	-105.04171717
8317.00	90.00	179.84	6917.00	542.47S	73.20E	==>	543.15	40.19621991	-105.04171799
8417.00	90.00	179.84	6917.00	642.47S	73.49E	==>	643.15	40.19594541	-105.04171882

All data is in Feet unless otherwise stated
Coordinates are from Slot MD's are from Rig and TVD's are from Rig (Planned Datum #1 5011.0ft above Mean Sea Level)
Vertical Section is from 0.00N 0.00E on azimuth 179.44 degrees
Bottom hole distance is 10451.83 Feet on azimuth 179.44 degrees from Wellhead
Calculation method uses Minimum Curvature method
Prepared by
Date Printed: 14-Jul-2020

SYSDRILL
Well Design Combined Report
Wellbore: W KNIGHT 7 (PWB)



Interpolated Wellpath									
MD[ft]	Inc[deg]	Azi[deg]	TVD[ft]	North[ft]	East[ft]	Dogleg [deg/100ft]	Vertical Section[ft]	Station Position (Latitude)	Station Position (Longitude)
8517.00	90.00	179.84	6917.00	742.47S	73.77E	==>	743.15	40.19567091	-105.04171965
8617.00	90.00	179.84	6917.00	842.47S	74.06E	==>	843.15	40.19539641	-105.04172048
8717.00	90.00	179.84	6917.00	942.47S	74.35E	==>	943.14	40.19512191	-105.04172131
8817.00	90.00	179.84	6917.00	1042.47S	74.63E	==>	1043.14	40.19484741	-105.04172213
8917.00	90.00	179.84	6917.00	1142.47S	74.92E	==>	1143.14	40.19457292	-105.04172296
9017.00	90.00	179.84	6917.00	1242.47S	75.20E	==>	1243.14	40.19429842	-105.04172379
9117.00	90.00	179.84	6917.00	1342.46S	75.49E	==>	1343.13	40.19402392	-105.04172462
9217.00	90.00	179.84	6917.00	1442.46S	75.77E	==>	1443.13	40.19374942	-105.04172544
9317.00	90.00	179.84	6917.00	1542.46S	76.06E	==>	1543.13	40.19347492	-105.04172627
9417.00	90.00	179.84	6917.00	1642.46S	76.34E	==>	1643.13	40.19320042	-105.04172710
9517.00	90.00	179.84	6917.00	1742.46S	76.63E	==>	1743.13	40.19292592	-105.04172793
9617.00	90.00	179.84	6917.00	1842.46S	76.92E	==>	1843.12	40.19265142	-105.04172876
9717.00	90.00	179.84	6917.00	1942.46S	77.20E	==>	1943.12	40.19237692	-105.04172958
9817.00	90.00	179.84	6917.00	2042.46S	77.49E	==>	2043.12	40.19210242	-105.04173041
9917.00	90.00	179.84	6917.00	2142.46S	77.77E	==>	2143.12	40.19182793	-105.04173124
10017.00	90.00	179.84	6917.00	2242.46S	78.06E	==>	2243.11	40.19155343	-105.04173207
10117.00	90.00	179.84	6917.00	2342.46S	78.34E	==>	2343.11	40.19127893	-105.04173290
10217.00	90.00	179.84	6917.00	2442.46S	78.63E	==>	2443.11	40.19100443	-105.04173372
10317.00	90.00	179.84	6917.00	2542.46S	78.91E	==>	2543.11	40.19072993	-105.04173455
10417.00	90.00	179.84	6917.00	2642.46S	79.20E	==>	2643.10	40.19045543	-105.04173538
10517.00	90.00	179.84	6917.00	2742.46S	79.48E	==>	2743.10	40.19018093	-105.04173621
10617.00	90.00	179.84	6917.00	2842.46S	79.77E	==>	2843.10	40.18990643	-105.04173703
10717.00	90.00	179.84	6917.00	2942.46S	80.06E	==>	2943.10	40.18963193	-105.04173786
10817.00	90.00	179.84	6917.00	3042.46S	80.34E	==>	3043.09	40.18935743	-105.04173869
10917.00	90.00	179.84	6917.00	3142.46S	80.63E	==>	3143.09	40.18908293	-105.04173952
11017.00	90.00	179.84	6917.00	3242.46S	80.91E	==>	3243.09	40.18880844	-105.04174035
11117.00	90.00	179.84	6917.00	3342.46S	81.20E	==>	3343.09	40.18853394	-105.04174117
11217.00	90.00	179.84	6917.00	3442.46S	81.48E	==>	3443.09	40.18825944	-105.04174200
11317.00	90.00	179.84	6917.00	3542.46S	81.77E	==>	3543.08	40.18798494	-105.04174283
11417.00	90.00	179.84	6917.00	3642.46S	82.05E	==>	3643.08	40.18771044	-105.04174366
11517.00	90.00	179.84	6917.00	3742.46S	82.34E	==>	3743.08	40.18743594	-105.04174448
11617.00	90.00	179.84	6917.00	3842.45S	82.63E	==>	3843.08	40.18716144	-105.04174531
11717.00	90.00	179.84	6917.00	3942.45S	82.91E	==>	3943.07	40.18688694	-105.04174614
11817.00	90.00	179.84	6917.00	4042.45S	83.20E	==>	4043.07	40.18661244	-105.04174697
11917.00	90.00	179.84	6917.00	4142.45S	83.48E	==>	4143.07	40.18633794	-105.04174779
12017.00	90.00	179.84	6917.00	4242.45S	83.77E	==>	4243.07	40.18606344	-105.04174862
12117.00	90.00	179.84	6917.00	4342.45S	84.05E	==>	4343.06	40.18578894	-105.04174945
12217.00	90.00	179.84	6917.00	4442.45S	84.34E	==>	4443.06	40.18551444	-105.04175028
12317.00	90.00	179.84	6917.00	4542.45S	84.62E	==>	4543.06	40.18523994	-105.04175111
12417.00	90.00	179.84	6917.00	4642.45S	84.91E	==>	4643.06	40.18496545	-105.04175193
12517.00	90.00	179.84	6917.00	4742.45S	85.20E	==>	4743.05	40.18469095	-105.04175276
12617.00	90.00	179.84	6917.00	4842.45S	85.48E	==>	4843.05	40.18441645	-105.04175359
12717.00	90.00	179.84	6917.00	4942.45S	85.77E	==>	4943.05	40.18414195	-105.04175442
12817.00	90.00	179.84	6917.00	5042.45S	86.05E	==>	5043.05	40.18386745	-105.04175524
12917.00	90.00	179.84	6917.00	5142.45S	86.34E	==>	5143.05	40.18359295	-105.04175607
13017.00	90.00	179.84	6917.00	5242.45S	86.62E	==>	5243.04	40.18331845	-105.04175690
13117.00	90.00	179.84	6917.00	5342.45S	86.91E	==>	5343.04	40.18304395	-105.04175773
13217.00	90.00	179.84	6917.00	5442.45S	87.19E	==>	5443.04	40.18276945	-105.04175855
13317.00	90.00	179.84	6917.00	5542.45S	87.48E	==>	5543.04	40.18249495	-105.04175938
13417.00	90.00	179.84	6917.00	5642.45S	87.76E	==>	5643.03	40.18222045	-105.04176021
13517.00	90.00	179.84	6917.00	5742.45S	88.05E	==>	5743.03	40.18194595	-105.04176104
13617.00	90.00	179.84	6917.00	5842.45S	88.34E	==>	5843.03	40.18167145	-105.04176186
13717.00	90.00	179.84	6917.00	5942.45S	88.62E	==>	5943.03	40.18139695	-105.04176269
13817.00	90.00	179.84	6917.00	6042.45S	88.91E	==>	6043.02	40.18112245	-105.04176352
13917.00	90.00	179.84	6917.00	6142.45S	89.19E	==>	6143.02	40.18084795	-105.04176435
14017.00	90.00	179.84	6917.00	6242.44S	89.48E	==>	6243.02	40.18057345	-105.04176517
14117.00	90.00	179.84	6917.00	6342.44S	89.76E	==>	6343.02	40.18029895	-105.04176600
14217.00	90.00	179.84	6917.00	6442.44S	90.05E	==>	6443.01	40.18002445	-105.04176683
14317.00	90.00	179.84	6917.00	6542.44S	90.33E	==>	6543.01	40.17974996	-105.04176766

All data is in Feet unless otherwise stated
Coordinates are from Slot MD's are from Rig and TVD's are from Rig (Planned Datum #1 5011.0ft above Mean Sea Level)
Vertical Section is from 0.00N 0.00E on azimuth 179.44 degrees
Bottom hole distance is 10451.83 Feet on azimuth 179.44 degrees from Wellhead
Calculation method uses Minimum Curvature method
Prepared by
Date Printed: 14-Jul-2020

SYSDRILL
Well Design Combined Report
Wellbore: W KNIGHT 7 (PWB)



Interpolated Wellpath									
MD[ft]	Inc[deg]	Azi[deg]	TVD[ft]	North[ft]	East[ft]	Dogleg [deg/100ft]	Vertical Section[ft]	Station Position (Latitude)	Station Position (Longitude)
14417.00	90.00	179.84	6917.00	6642.44S	90.62E	==>	6643.01	40.17947546	-105.04176849
14517.00	90.00	179.84	6917.00	6742.44S	90.91E	==>	6743.01	40.17920096	-105.04176931
14617.00	90.00	179.84	6917.00	6842.44S	91.19E	==>	6843.01	40.17892646	-105.04177014
14717.00	90.00	179.84	6917.00	6942.44S	91.48E	==>	6943.00	40.17865196	-105.04177097
14817.00	90.00	179.84	6917.00	7042.44S	91.76E	==>	7043.00	40.17837746	-105.04177180
14917.00	90.00	179.84	6917.00	7142.44S	92.05E	==>	7143.00	40.17810296	-105.04177262
15017.00	90.00	179.84	6917.00	7242.44S	92.33E	==>	7243.00	40.17782846	-105.04177345
15117.00	90.00	179.84	6917.00	7342.44S	92.62E	==>	7342.99	40.17755396	-105.04177428
15217.00	90.00	179.84	6917.00	7442.44S	92.90E	==>	7442.99	40.17727946	-105.04177511
15317.00	90.00	179.84	6917.00	7542.44S	93.19E	==>	7542.99	40.17700496	-105.04177593
15417.00	90.00	179.84	6917.00	7642.44S	93.48E	==>	7642.99	40.17673046	-105.04177676
15517.00	90.00	179.84	6917.00	7742.44S	93.76E	==>	7742.98	40.17645596	-105.04177759
15617.00	90.00	179.84	6917.00	7842.44S	94.05E	==>	7842.98	40.17618146	-105.04177841
15717.00	90.00	179.84	6917.00	7942.44S	94.33E	==>	7942.98	40.17590696	-105.04177924
15817.00	90.00	179.84	6917.00	8042.44S	94.62E	==>	8042.98	40.17563246	-105.04178007
15917.00	90.00	179.84	6917.00	8142.44S	94.90E	==>	8142.97	40.17535796	-105.04178090
16017.00	90.00	179.84	6917.00	8242.44S	95.19E	==>	8242.97	40.17508346	-105.04178172
16117.00	90.00	179.84	6917.00	8342.44S	95.47E	==>	8342.97	40.17480896	-105.04178255
16217.00	90.00	179.84	6917.00	8442.44S	95.76E	==>	8442.97	40.17453446	-105.04178338
16317.00	90.00	179.84	6917.00	8542.44S	96.05E	==>	8542.97	40.17425996	-105.04178421
16417.00	90.00	179.84	6917.00	8642.44S	96.33E	==>	8642.96	40.17398546	-105.04178503
16517.00	90.00	179.84	6917.00	8742.43S	96.62E	==>	8742.96	40.17371096	-105.04178586
16617.00	90.00	179.84	6917.00	8842.43S	96.90E	==>	8842.96	40.17343646	-105.04178669
16717.00	90.00	179.84	6917.00	8942.43S	97.19E	==>	8942.96	40.17316196	-105.04178752
16817.00	90.00	179.84	6917.00	9042.43S	97.47E	==>	9042.95	40.17288746	-105.04178834
16917.00	90.00	179.84	6917.00	9142.43S	97.76E	==>	9142.95	40.17261296	-105.04178917
17017.00	90.00	179.84	6917.00	9242.43S	98.04E	==>	9242.95	40.17233846	-105.04179000
17117.00	90.00	179.84	6917.00	9342.43S	98.33E	==>	9342.95	40.17206396	-105.04179083
17217.00	90.00	179.84	6917.00	9442.43S	98.61E	==>	9442.94	40.17178946	-105.04179165
17317.00	90.00	179.84	6917.00	9542.43S	98.90E	==>	9542.94	40.17151496	-105.04179248
17417.00	90.00	179.84	6917.00	9642.43S	99.19E	==>	9642.94	40.17124046	-105.04179331
17517.00	90.00	179.84	6917.00	9742.43S	99.47E	==>	9742.94	40.17096596	-105.04179414
17617.00	90.00	179.84	6917.00	9842.43S	99.76E	==>	9842.93	40.17069146	-105.04179496
17717.00	90.00	179.84	6917.00	9942.43S	100.04E	==>	9942.93	40.17041696	-105.04179579
17817.00	90.00	179.84	6917.00	10042.43S	100.33E	==>	10042.93	40.17014246	-105.04179662
17917.00	90.00	179.84	6917.00	10142.43S	100.61E	==>	10142.93	40.16986796	-105.04179744
18017.00	90.00	179.84	6917.00	10242.43S	100.90E	==>	10242.93	40.16959346	-105.04179827
18117.00	90.00	179.84	6917.00	10342.43S	101.18E	==>	10342.92	40.16931896	-105.04179910
18217.00	90.00	179.84	6917.00	10442.43S	101.47E	==>	10442.92	40.16904446	-105.04179993
18225.91	90.00	179.84	6917.00	10451.34S	101.50E	==>	10451.83	40.16902000	-105.04180000

All data is in Feet unless otherwise stated
Coordinates are from Slot MD's are from Rig and TVD's are from Rig (Planned Datum #1 5011.0ft above Mean Sea Level)
Vertical Section is from 0.00N 0.00E on azimuth 179.44 degrees
Bottom hole distance is 10451.83 Feet on azimuth 179.44 degrees from Wellhead
Calculation method uses Minimum Curvature method
Prepared by
Date Printed: 14-Jul-2020

SYSDRILL
Well Design Combined Report
Wellbore: W KNIGHT 7 (PWB)



Targets							
Name	North[ft]	East[ft]	TVD[ft]	Latitude	Longitude	Northing	Easting
Knight 7 BH	10451.34S	101.50E	6917.00	40.16902000	-105.04180000	1304747.82	3128047.66
Knight 7 EP	422.96N	70.45E	6917.00	40.19887000	-105.04171000	1315621.63	3128016.61

Survey Tool Program						
Reference	Survey Name	MD[ft]	TVD[ft]	Survey Tool	Error Model	
590223	Planned	1517.00	1517.00	WdW Rate Gyro	Standard	
590222	Planned	18225.91	6917.00	ISCWSA MWD	Rev 4 + SAG + FLT	

Notes