



US Treatment Report

Customer: PetroStar Services LLC

Job #: JOB00084226

Rep: Chad Parks

Job Date: Jun 16 @ 00:00

Supervisor: Travis Tolman

Rig: Work Over

Time Requested: Jun 16 @ 15:00

Job Type: US Remedial

Well: Guttersen 24A

Time Arrived: Jun 16 @ 09:00

Job Type: Balanced Plug

UWI: Guttersen 24A

Time Released: Jun 16 @ 16:30

Surface: NWNW 24, 3N 64W

25 sk MAG S 14.1 + 0.50% MCFR-2

Yield: 1.28 ft³/sk = 5.7bbls

Mix Water: 5.89 gal/sk = 147.25gal

BHCT (F)	77	BHST (F)	69	Casing 1 Casing Size (in)	4.5
Casing 1 Weight (lb/ft)	10.5	Hole Size (in)	4.5	Max Pressure (psi)	2000
Max Tbg Pressure (psi)	6720	Mud Density (lb/gal)	8.3	Mud Type	Water
TMD (ft)	1800	Tubing (in)	2.375	Tubing Length (ft)	1800
Tubing WT (lb/ft)	4.7	TVD (ft)	1800		

Treatment Info: Sacks Used: 0 Sacks Not Used: 0

Preflush: 8bbls Fresh Water

Circulation Time: 0.5

Displace:

Slurry Temp: Bulk Sample: No

Water Temp: Water Sample: No

Bulk Temp: 68 Slurry Sample: Yes

Slurry Returns: Plug Bumped: Pump Out Lines: No Float Held:

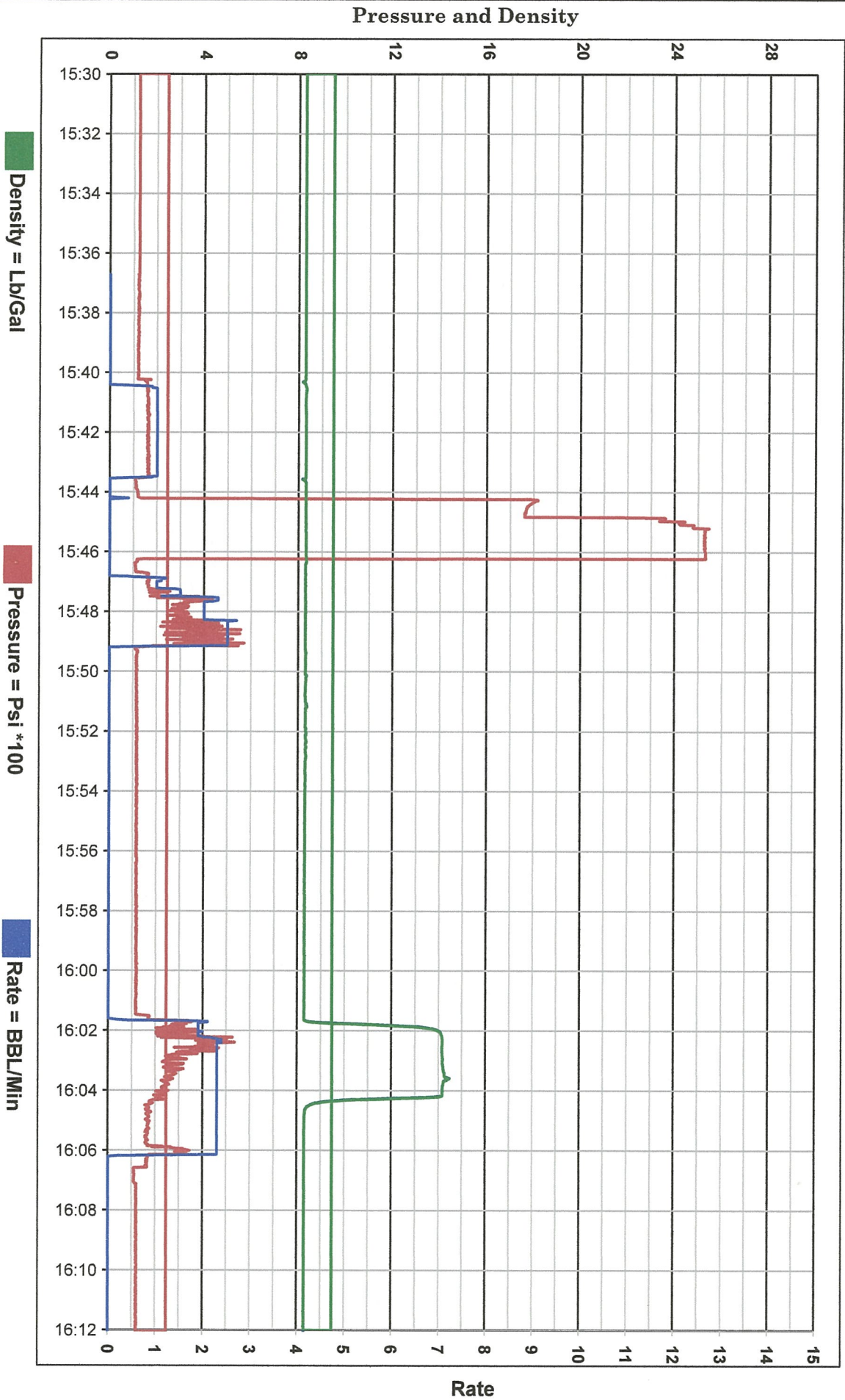
Time	Pressure psi	Annular Pressure psi	Volume Per Stage bbls	Total Stage Volume bbls	Rate bbls/mi n	Treatment Detail
14:00	0.00					Arrive on Location - Met with company man to get numbers, discuss job and safety On location of 140000
14:30	0.00					Safety Meeting - Held safety meeting with company man, rig hands and crew to discuss job and safety
14:40	163.00		3	3	1	Fill Lines - Load lines with fresh water
14:44	2,500.00					Start Pressure Test - Pressure test with fresh water
14:47	500.00		5	5	2.5	Attain Circulation to Surface
15:01	454.00		5.7	5.7	2.3	Pump Slurry - Pump 25sks of cement at 14.1#-1.28Y-5.89gps, bottom of plug 1800', top at 1442'
15:04	254.00		5.4	5.4	2.3	Displace - Displace fresh water
15:06	0.00					Stop Pumping - Shut down
15:08	120.00					Balance plug
15:20	0.00					Wash Up Truck
16:00	0.00					Rig Out -
16:30	0.00					Leave Location



Customer: PetroStar
Date: June 16 2020
Ticket: 84226

Well Name: Guttersen 24A
UWI: Guttersen 24A
Job Type: Plug

Unit
1015





US Treatment Report

Customer: PetroStar Services LLC
Rep: Chad Parks
Supervisor: Travis Tolman
Job Type: US Remedial
 Balanced Plug

Rig: Work Over
Well: Gutttersen 24A
UWI: Gutttersen 24A
Surface: NWNW 24, 3N 64W

Job #: JOB00084233
Job Date: Jun 17 @ 08:00
Time Requested: Jun 17 @ 08:00
Time Arrived: Jun 17 @ 10:00
Time Released: Jun 17 @ 13:30

336.9 sk MAG G 15.8 + 0.30% MCFR-2

Yield: 1.14 ft³/sk = 68.4bbls Mix Water: 4.97 gal/sk = 1674.39gal

BHCT (F)	77	BHST (F)	68	Casing 1 Casing Size (in)	8.625
Casing 1 Weight (lb/ft)	24	Casing 2 Casing Size (in)	4.5	Casing 2 Weight (lb/ft)	10.5
Hole Size (in)	10	Max Pressure (psi)	1500	Max Tbg Pressure (psi)	6720
Mud Density (lb/gal)	8.4	Mud Type	Water	Perfs Set 1 (ft)	951
Surface Casing (in)	8.625	Surface Casing Grade	J-55	Surface Casing Length (ft)	701
Surface Casing WT (lb/ft)	24	TMD (ft)	951	Tubing (in)	2.375
Tubing Grade	N-80	Tubing Length (ft)	951	Tubing WT (lb/ft)	4.7
TVD (ft)	951				

Treatment Info: Sacks Used: 0 Sacks Not Used: 0

Preflush: 3bbls Fresh Water

Circulation Time: 0.5

Displace:

Slurry Temp: 86 Bulk Sample: No

Water Temp: 72 Water Sample: No

Bulk Temp: 68 Slurry Sample: Yes

Slurry Returns: Plug Bumped: Pump Out Lines: No Float Held:

Time	Pressure psi	Annular Pressure psi	Volume Per Stage bbls	Total Stage Volume bbls	Rate bbls/mi n	Treatment Detail
10:00	0.00					Arrive on Location - Met with company man to get numbers, discuss job and safety On location of 1000
10:20	0.00					Safety Meeting - Held safety meeting with company man, rig hands and crew to discuss job and safety
10:33	160.00		3	3	1	Fill Lines - Load lines with fresh water
10:37	2,500.00					Start Pressure Test - Pressure test with fresh water
10:48	215.00		66	66	1.5	Pump Slurry - Pump 336.9sk of cement at 15.8#-1.14Y-4.97gps, bottom of plug 951', top at surface
11:43	0.00					Stop Pumping - Shut down
11:45	0.00					Rig pulling tubing
12:24	160.00		2	2		Pump Slurry - Pump cement into surface casing to fill to surface
12:27	0.00					Stop Pumping
12:29	0.00					Wash Up Truck



Customer: PetroStar
Date: June 17 2020
Ticket: 84233

Well Name: Gutteresen 24A
UWI: Gutteresen 24A
Job Type: Plug

Unit
1015

Pressure and Density

