

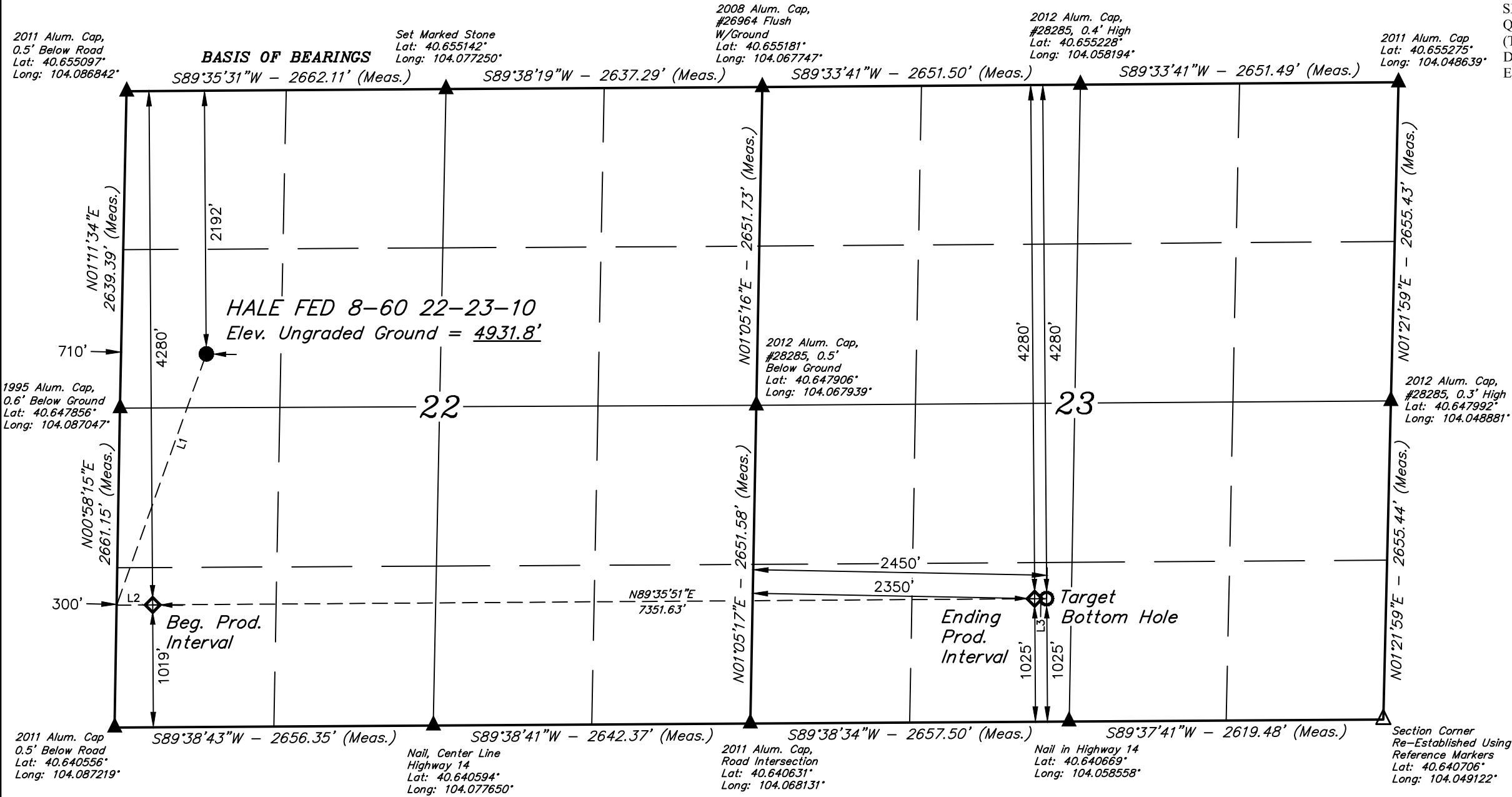
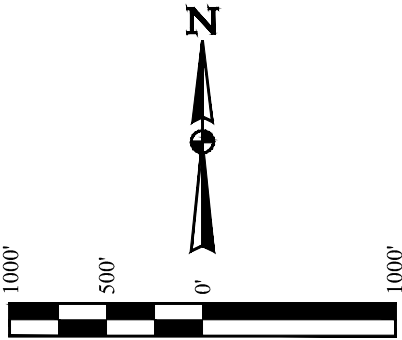
T8N, R60W, 6th P.M.

BISON OIL & GAS II

HALE FED 8-60 22-23-10  
SW 1/4 NW 1/4, SECTION 22, T8N, R60W, 6th P.M.  
WELD COUNTY, COLORADO

BASIS OF ELEVATION

SPOT ELEVATION LOCATED AT THE NORTHEAST CORNER OF SECTION 1, T11N, R63W, 6th P.M. TAKEN FROM THE HEREFORD, QUADRANGLE, COLORADO, WELD COUNTY, 7.5 MINUTE QUAD (TOPOGRAPHIC MAP) PUBLISHED BY THE UNITED STATES DEPARTMENT OF THE INTERIOR, GEOLOGICAL SURVEY. SAID ELEVATION IS MARKED AS BEING 5352 FEET.



NOTE:  
Distances referenced on plat to section lines are perpendicular.

LEGEND:

- = PROPOSED WELLHEAD.
- ◆ = PRODUCTION INTERVAL.
- = TARGET BOTTOM HOLE.
- ▲ = SECTION CORNERS LOCATED. (NAD 83)
- △ = SECTION CORNERS RE-ESTABLISHED. (Not Set on Ground.) (NAD 83)

LINE TABLE		
LINE	DIRECTION	LENGTH
L1	S19°38'49"W	2222.67'
L2	N89°35'51"E	300.09'
L3	N89°38'34"E	100.03'

SURFACE LOCATION 2192' FNL 710' FWL	BEG. PROD. INTERVAL 4280' FNL 1019' FSL 300' FWL	ENDING PROD. INTERVAL 4280' FNL 1025' FSL 2350' FWL	TARGET BOTTOM HOLE 4280' FNL 1025' FSL 2450' FWL
NAD 83 (SURFACE LOCATION) LATITUDE = 40°38'56.74" (40.649093) LONGITUDE = 104°05'04.04" (104.084454)	NAD 83 (BEG. PROD. INTERVAL) LATITUDE = 40°38'36.08" (40.643356) LONGITUDE = 104°05'09.86" (104.086072)	NAD 83 (ENDING PROD. INTERVAL) LATITUDE = 40°38'36.52" (40.643477) LONGITUDE = 104°03'34.52" (104.059588)	NAD 83 (TARGET BOTTOM HOLE) LATITUDE = 40°38'36.52" (40.643478) LONGITUDE = 104°03'33.22" (104.059228)
NAD 27 (SURFACE LOCATION) LATITUDE = 40°38'56.79" (40.649107) LONGITUDE = 104°05'02.22" (104.083950)	NAD 27 (BEG. PROD. INTERVAL) LATITUDE = 40°38'36.13" (40.643370) LONGITUDE = 104°05'08.04" (104.085567)	NAD 27 (ENDING PROD. INTERVAL) LATITUDE = 40°38'36.57" (40.643490) LONGITUDE = 104°03'32.70" (104.059083)	NAD 27 (TARGET BOTTOM HOLE) LATITUDE = 40°38'36.57" (40.643492) LONGITUDE = 104°03'31.40" (104.058723)
STATE PLANE NAD 83 (CO. NORTH) N: 1482442.16 E: 3392778.84	STATE PLANE NAD 83 (CO. NORTH) N: 1480345.03 E: 3392363.27	STATE PLANE NAD 83 (CO. NORTH) N: 1480507.37 E: 3399711.21	STATE PLANE NAD 83 (CO. NORTH) N: 1480509.50 E: 3399811.19
STATE PLANE NAD 27 (CO. NORTH) N: 482440.99 E: 2392929.28	STATE PLANE NAD 27 (CO. NORTH) N: 480343.91 E: 2392513.73	STATE PLANE NAD 27 (CO. NORTH) N: 480506.14 E: 2399861.89	STATE PLANE NAD 27 (CO. NORTH) N: 480508.27 E: 2399961.87

PDOP = 1.3

CERTIFICATE

THIS IS TO CERTIFY THAT THE ABOVE PLAT WAS PREPARED FROM FIELD NOTES OF ACTUAL SURVEYS MADE BY ME OR UNDER MY SUPERVISION, AND THAT THE SAME ARE TRUE AND CORRECT TO THE BEST OF MY KNOWLEDGE AND BELIEF.

REGISTERED LAND SURVEYOR  
REGISTRATION NO. 28285  
STATE OF COLORADO  
07-06-20

REV: 5 07-06-20 C.IVIE (SL, BPI, EPI & TBH MOVE)



UELS, LLC  
Corporate Office \* 85 South 200 East  
Vernal, UT 84078 \* (435) 789-1017

SURVEYED BY	GREG WEIMER	12-20-18	SCALE
DRAWN BY	C.C.	06-30-17	1" = 1000'

WELL LOCATION PLAT