



Crestone Peak Resources

Schlumberger

Plan 0

Borehole:	Well:	Field:	Structure:
Original Hole	Rush 4-65 29-30 4CH	CO, Arapahoe County (NAD 83 CZ)	Crestone Peak 28-04S-65W (Rush South Pad)

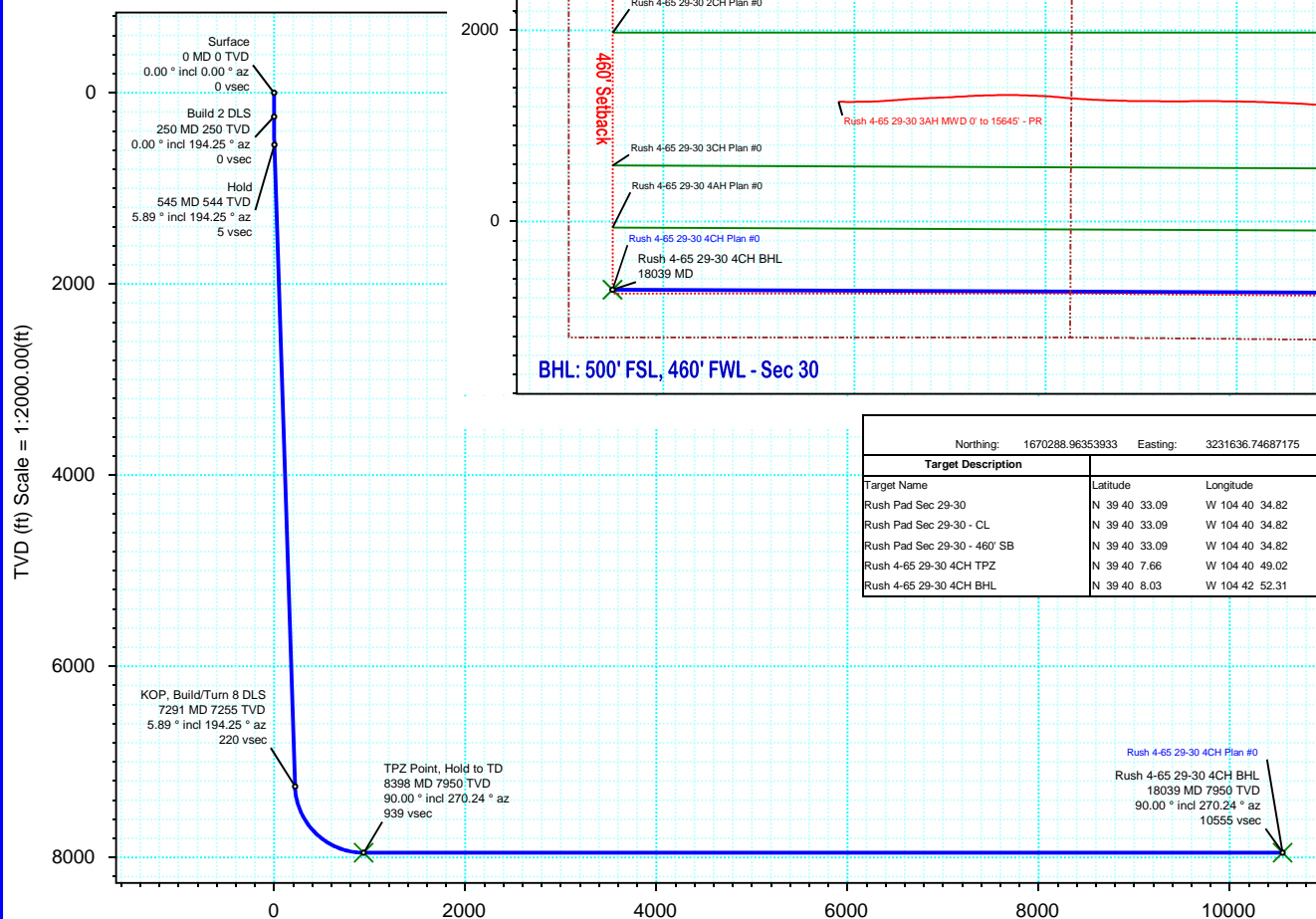
Gravity & Magnetic Parameters					Surface Location					NAD83 Colorado State Plane, Central Zone, US Feet					Miscellaneous			
Model:	HDGM 2020	Dip:	66.348°	Date:	22-Jun-2020	Lat:	N 39 40 15.10	Northing:	1670288.96ftUS	Grid Conv:	0.519°	Slot:	Rush 4-65 29-30 4CH	TVD Ref:	KB 28ft(5735.9ft above MSL)			
MagDec:	8.576°	FS:	51553.129nT	Gravity FS:	998.91mgn (9.80665 Based)	Lon:	W 104 40 37.64	Easting:	3231636.75ftUS	Scale Fact:	0.9999853	Plan:	Rush 4-65 29-30 4CH Plan #0					

Proposal

EW (ft) Scale = 1:2000.00(ft)



True North
Tot Corr (M->T 8.576°)
Mag Dec (8.576°)
Grid Conv (0.519°)



TVD (ft) Scale = 1:2000.00(ft)

NS (ft) Scale = 1:2000.00(ft)

Target Description		Surface Location		Grid Coord		Local Coord	
Target Name	Latitude	Longitude	Northings	Easting	TVD	N(+)/S(-)	E(+)/W(-)
Rush Pad Sec 29-30	N 39 40 33.09	W 104 40 34.82	1672111.09	3231840.37	5735.90	-342.55	1820.24
Rush Pad Sec 29-30 - CL	N 39 40 33.09	W 104 40 34.82	1672111.09	3231840.37	5735.90	-342.55	1820.24
Rush Pad Sec 29-30 - 460' SB	N 39 40 33.09	W 104 40 34.82	1672111.09	3231840.37	5735.90	-342.55	1820.24
Rush 4-65 29-30 4CH TPZ	N 39 40 7.66	W 104 40 49.02	1669528.38	3230753.19	7950.00	939.22	-752.56
Rush 4-65 29-30 4CH BHL	N 39 40 8.03	W 104 42 52.31	1669480.73	3221112.45	7950.00	10555.46	-712.89

Critical Points								
Critical Point	MD	INCL	AZIM	TVD	VSEC	N(+)/S(-)	E(+)/W(-)	DLS
Surface	0.00	0.00	0.00	0.00	0.00	0.00	0.00	
Build 2 DLS	250.00	0.00	194.25	250.00	0.00	0.00	0.00	0.00
Hold	544.60	5.89	194.25	544.08	4.71	-14.67	-3.72	2.00
KOP, Build/Turn 8 DLS	7291.24	5.89	194.25	7255.08	220.09	-685.92	-174.17	0.00
TPZ Point, Hold to TD	8398.43	90.00	270.24	7950.00	939.22	-752.56	-890.42	8.00
Rush 4-65 29-30 4CH BHL	18039.45	90.00	270.24	7950.00	10555.46	-712.89	-10531.36	0.00

Vertical Section (ft) Azim = 266.13° Scale = 1:2000.00(ft) Origin = 0N/-S, 0E/-W

Rush 4-65 29-30 4CH Plan #0 Proposal Geodetic Report

(Def Plan)

Report Date: June 24, 2020 - 03:15 PM
Client: Crestone Peak Resources
Field: CO, Arapahoe County (NAD 83 CZ)
Structure / Slot: Crestone Peak 28-04S-65W (Rush South Pad) / Rush 4-65 29-30 4CH
Well: Rush 4-65 29-30 4CH
Borehole: Original Hole
UWI / API#: Unknown / Unknown
Survey Name: Rush 4-65 29-30 4CH Plan #0
Survey Date: June 22, 2020
Tort / AHD / DDI / ERD Ratio: 94.468 ° / 11074.498 ft / 6.375 / 1.393
Coordinate Reference System: NAD83 Colorado State Plane, Central Zone, US Feet
Location Lat / Long: N 39° 40' 15.09960", W 104° 40' 37.63560"
Location Grid N/E Y/X: N 1670288.964 ftUS, E 3231636.747 ftUS
CRS Grid Convergence Angle: 0.5190 °
Grid Scale Factor: 0.9999853
Version / Patch: 2.10.810.1

Survey / DLS Computation: Minimum Curvature / Lubinski
Vertical Section Azimuth: 266.127 ° (True North)
Vertical Section Origin: 0.000 ft, 0.000 ft
TVD Reference Datum: KB 28ft
TVD Reference Elevation: 5735.900 ft above MSL
Seabed / Ground Elevation: 5707.900 ft above MSL
Magnetic Declination: 8.576 °
Total Gravity Field Strength: 998.9100mgn (9.80665 Based)
Gravity Model: GARM
Total Magnetic Field Strength: 51553.129 nT
Magnetic Dip Angle: 66.348 °
Declination Date: June 22, 2020
Magnetic Declination Model: HDGM 2020
North Reference: True North
Grid Convergence Used: 0.0000 °
Total Corr Mag North→True North: 8.5761 °
Local Coord Referenced To: Well Head

Comments	MD (ft)	Incl (°)	Azim True (°)	TVD (ft)	VSEC (ft)	NS (ft)	EW (ft)	DLS (°/100ft)	Northing (ftUS)	Easting (ftUS)	Latitude (°)	Longitude (°)
Surface	0.00	0.00	0.00	0.00	0.00	0.00	0.00	N/A	1670288.96	3231636.75	39.670861	-104.677121
Build 2 DLS	100.00	0.00	194.25	100.00	0.00	0.00	0.00	0.00	1670288.96	3231636.75	39.670861	-104.677121
	200.00	0.00	194.25	200.00	0.00	0.00	0.00	0.00	1670288.96	3231636.75	39.670861	-104.677121
	250.00	0.00	194.25	250.00	0.00	0.00	0.00	0.00	1670288.96	3231636.75	39.670861	-104.677121
	300.00	1.00	194.25	300.00	0.14	-0.42	-0.11	2.00	1670288.54	3231636.64	39.670860	-104.677121
	400.00	3.00	194.25	399.93	1.22	-3.81	-0.97	2.00	1670285.15	3231635.82	39.670851	-104.677124
Hold	500.00	5.00	194.25	499.68	3.39	-10.57	-2.68	2.00	1670278.37	3231634.16	39.670832	-104.677131
	544.60	5.89	194.25	544.08	4.71	-14.67	-3.72	2.00	1670274.26	3231633.16	39.670821	-104.677134
	600.00	5.89	194.25	599.19	6.48	-20.18	-5.12	0.00	1670268.74	3231631.81	39.670806	-104.677139
	700.00	5.89	194.25	698.66	9.67	-30.13	-7.65	0.00	1670258.77	3231629.37	39.670778	-104.677148
	800.00	5.89	194.25	798.13	12.86	-40.08	-10.18	0.00	1670248.79	3231626.93	39.670751	-104.677157
	900.00	5.89	194.25	897.60	16.05	-50.03	-12.70	0.00	1670238.82	3231624.50	39.670724	-104.677166
	1000.00	5.89	194.25	997.08	19.25	-59.98	-15.23	0.00	1670228.85	3231622.06	39.670696	-104.677175
	1100.00	5.89	194.25	1096.55	22.44	-69.93	-17.76	0.00	1670218.88	3231619.63	39.670669	-104.677184
	1200.00	5.89	194.25	1196.02	25.63	-79.88	-20.28	0.00	1670208.91	3231617.19	39.670642	-104.677193
	1300.00	5.89	194.25	1295.49	28.82	-89.83	-22.81	0.00	1670198.93	3231614.75	39.670614	-104.677202
	1400.00	5.89	194.25	1394.96	32.02	-99.78	-25.33	0.00	1670188.96	3231612.32	39.670587	-104.677211
	1500.00	5.89	194.25	1494.43	35.21	-109.73	-27.86	0.00	1670178.99	3231609.88	39.670560	-104.677220
	1600.00	5.89	194.25	1593.91	38.40	-119.68	-30.39	0.00	1670169.02	3231607.45	39.670532	-104.677229
	1700.00	5.89	194.25	1693.38	41.59	-129.63	-32.91	0.00	1670159.05	3231605.01	39.670505	-104.677238
	1800.00	5.89	194.25	1792.85	44.79	-139.57	-35.44	0.00	1670149.08	3231602.57	39.670478	-104.677247
	1900.00	5.89	194.25	1892.32	47.98	-149.52	-37.97	0.00	1670139.10	3231600.14	39.670451	-104.677256
	2000.00	5.89	194.25	1991.79	51.17	-159.47	-40.49	0.00	1670129.13	3231597.70	39.670423	-104.677265
	2100.00	5.89	194.25	2091.26	54.36	-169.42	-43.02	0.00	1670119.16	3231595.26	39.670396	-104.677274
	2200.00	5.89	194.25	2190.74	57.56	-179.37	-45.55	0.00	1670109.19	3231592.83	39.670369	-104.677283
	2300.00	5.89	194.25	2290.21	60.75	-189.32	-48.07	0.00	1670099.22	3231590.39	39.670341	-104.677292
	2400.00	5.89	194.25	2389.68	63.94	-199.27	-50.60	0.00	1670089.25	3231587.96	39.670314	-104.677301
	2500.00	5.89	194.25	2489.15	67.13	-209.22	-53.12	0.00	1670079.27	3231585.52	39.670287	-104.677310
	2600.00	5.89	194.25	2588.62	70.33	-219.17	-55.65	0.00	1670069.30	3231583.08	39.670259	-104.677319
	2700.00	5.89	194.25	2688.09	73.52	-229.12	-58.18	0.00	1670059.33	3231580.65	39.670232	-104.677328
	2800.00	5.89	194.25	2787.57	76.71	-239.07	-60.70	0.00	1670049.36	3231578.21	39.670205	-104.677337
	2900.00	5.89	194.25	2887.04	79.90	-249.02	-63.23	0.00	1670039.39	3231575.78	39.670177	-104.677346
	3000.00	5.89	194.25	2986.51	83.10	-258.97	-65.76	0.00	1670029.41	3231573.34	39.670150	-104.677355
	3100.00	5.89	194.25	3085.98	86.29	-268.92	-68.28	0.00	1670019.44	3231570.90	39.670123	-104.677364
	3200.00	5.89	194.25	3185.45	89.48	-278.87	-70.81	0.00	1670009.47	3231568.47	39.670095	-104.677373
	3300.00	5.89	194.25	3284.93	92.67	-288.82	-73.34	0.00	1669999.50	3231566.03	39.670068	-104.677382
	3400.00	5.89	194.25	3384.40	95.87	-298.77	-75.86	0.00	1669989.53	3231563.60	39.670041	-104.677390
	3500.00	5.89	194.25	3483.87	99.06	-308.72	-78.39	0.00	1669979.56	3231561.16	39.670013	-104.677399
	3600.00	5.89	194.25	3583.34	102.25	-318.67	-80.91	0.00	1669969.58	3231558.72	39.669986	-104.677408
	3700.00	5.89	194.25	3682.81	105.44	-328.61	-83.44	0.00	1669959.61	3231556.29	39.669959	-104.677417
	3800.00	5.89	194.25	3782.28	108.64	-338.56	-85.97	0.00	1669949.64	3231553.85	39.669932	-104.677426
	3900.00	5.89	194.25	3881.76	111.83	-348.51	-88.49	0.00	1669939.67	3231551.42	39.669904	-104.677435
	4000.00	5.89	194.25	3981.23	115.02	-358.46	-91.02	0.00	1669929.70	3231548.98	39.669877	-104.677444
	4100.00	5.89	194.25	4080.70	118.21	-368.41	-93.55	0.00	1669919.72	3231546.54	39.669850	-104.677453
	4200.00	5.89	194.25	4180.17	121.41	-378.36	-96.07	0.00	1669909.75	3231544.11	39.669822	-104.677462
	4300.00	5.89	194.25	4279.64	124.60	-388.31	-98.60	0.00	1669899.78	3231541.67	39.669795	-104.677471
4400.00	5.89	194.25	4379.11	127.79	-398.26	-101.12	0.00	1669889.81	3231539.24	39.669768	-104.677480	
4500.00	5.89	194.25	4478.59	130.98	-408.21	-103.65	0.00	1669879.84	3231536.80	39.669740	-104.677489	
4600.00	5.89	194.25	4578.06	134.18	-418.16	-106.18	0.00	1669869.87	3231534.36	39.669713	-104.677498	
4700.00	5.89	194.25	4677.53	137.37	-428.11	-108.70	0.00	1669859.89	3231531.93	39.669686	-104.677507	
4800.00	5.89	194.25	4777.00	140.56	-438.06	-111.23	0.00	1669849.92	3231529.49	39.669658	-104.677516	
4900.00	5.89	194.25	4876.47	143.75	-448.01	-113.76	0.00	1669839.95	3231527.05	39.669631	-104.677525	
5000.00	5.89	194.25	4975.94	146.95	-457.96	-116.28	0.00	1669829.98	3231524.62	39.669604	-104.677534	
5100.00	5.89	194.25	5075.42	150.14	-467.91	-118.81	0.00	1669820.01	3231522.18	39.669576	-104.677543	
5200.00	5.89	194.25	5174.89	153.33	-477.86	-121.34	0.00	1669810.04	3231519.75	39.669549	-104.677552	
5300.00	5.89	194.25	5274.36	156.52	-487.81	-123.86	0.00	1669800.06	3231517.31	39.669522	-104.677561	
5400.00	5.89	194.25	5373.83	159.72	-497.76	-126.39	0.00	1669790.09	3231514.87	39.669495	-104.677570	
5500.00	5.89	194.25	5473.30	162.91	-507.71	-128.91	0.00	1669780.12	3231512.44	39.669467	-104.677579	
5600.00	5.89	194.25	5572.77	166.10	-517.66	-131.44	0.00	1669770.15	3231510.00	39.669440	-104.677588	
5700.00	5.89	194.25	5672.25	169.29	-527.60	-133.97	0.00	1669760.18	3231507.57	39.669413	-104.677597	
5800.00	5.89	194.25	5771.72	172.49	-537.55	-136.49	0.00	1669750.20	3231505.13	39.669385	-104.677606	
5900.00	5.89	194.25	5871.19	175.68	-547.50	-139.02	0.00	1669740.23	3231502.69	39.669358	-104.677615	
6000.00	5.89	194.25	5970.66	178.87	-557.45	-141.55	0.00	1669730.26	3231500.26	39.669331	-104.677624	
6100.00	5.89	194.25	6070.13	182.06	-567.40	-144.07	0.00	1669720.29	3231497.82	39.669303	-104.677633	
6200.00	5.89	194.25	6169.61	185.26	-577.35	-146.60	0.00	1669710.32	3231495.39	39.669276	-104.677642	
6300.00	5.89	194.25	6269.08	188.45	-587.30	-149.13	0.00	1669700.35	3231492.95	39.669249	-104.677651	
6400.00	5.89	194.25	6368.55	191.64	-597.25	-151.65	0.00	1669690.37	3231490.51	39.669221	-104.677660	
6500.00	5.89	194.25	6468.02	194.83	-607.20	-154.18	0.00	1669680.40	3231488.08	39.669194	-104.677669	
6600.00	5.89	194.25	6567.49	198.03	-617.15	-156.70	0.00	1669670.43	3231485.64	39.669167	-104.677678	
6700.00	5.89	194.25	6666.96	201.22	-627.10	-159.23	0.00	1669660.46	3231483.21	39.669139	-104.677687	
6800.00	5.89	194.25	6766.44	204.41	-637.05	-161.76	0.00	1669650.49	3231480.77	39.669112	-104.677696	
6900.00	5.89	194.25	6865.91	207.60	-647.00	-164.28	0.00	1669640.51	3231478.33	39.669085	-104.677705	
7000.00	5.89	194.25	6965.38	210.80	-656.95	-166.81	0.00	1669630.54	3231475.90	39.669058	-104.677714	
7100.00	5.89	194.25	7064.85	213.99	-666.90	-169.34	0.00	1669620.57	3231473.46	39.669030	-104.677723	
7200.00	5.89	194.25	7164.32	217.18	-676.85	-171.86	0.00	1669610.60	3231471.03	39.669003	-104.677731	
KOP_Build/Turn R/DI S	7291.24	5.89	194.25	7255.08	220.09	-685.92	-174.17	0.00	1669601.50	3231468.80	39.668978	-104.677740

Comments	MD (ft)	Incl (°)	Azim True (°)	TVD (ft)	VSEC (ft)	NS (ft)	EW (ft)	DLS (°/100ft)	Northing (ftUS)	Easting (ftUS)	Latitude (°)	Longitude (°)
	7300.00	6.10	200.66	7263.79	220.43	-686.80	-174.44	8.00	1669600.63	3231468.54	39.668976	-104.677741
	7400.00	11.61	241.08	7362.65	231.77	-696.65	-185.14	8.00	1669590.68	3231457.92	39.668949	-104.677779
	7500.00	18.98	253.31	7459.66	256.78	-706.20	-209.57	8.00	1669580.90	3231433.59	39.668922	-104.677865
	7600.00	26.70	258.75	7551.16	294.98	-715.27	-247.24	8.00	1669571.50	3231396.00	39.668897	-104.677999
	7700.00	34.54	261.87	7637.16	345.62	-723.67	-297.42	8.00	1669562.64	3231345.90	39.668874	-104.678178
	7800.00	42.44	263.95	7715.37	407.71	-731.25	-359.14	8.00	1669554.50	3231284.25	39.668854	-104.678397
	7900.00	50.36	265.48	7784.27	480.04	-737.85	-431.20	8.00	1669547.25	3231212.26	39.668835	-104.678653
	8000.00	58.30	266.69	7842.54	561.22	-743.35	-512.18	8.00	1669541.01	3231131.33	39.668820	-104.678940
	8100.00	66.25	267.71	7889.02	649.65	-747.65	-600.53	8.00	1669535.92	3231043.03	39.668809	-104.679254
	8200.00	74.21	268.61	7922.82	743.62	-750.64	-694.51	8.00	1669532.07	3230949.08	39.668800	-104.679588
	8300.00	82.16	269.45	7943.28	841.29	-752.29	-792.30	8.00	1669529.54	3230851.31	39.668796	-104.679935
TPZ Point, Hold to TD	8398.43	90.00	270.24	7950.00	939.22	-752.56	-890.42	8.00	1669528.38	3230753.19	39.668795	-104.680284
	8400.00	90.00	270.24	7950.00	940.78	-752.55	-891.99	0.00	1669528.38	3230751.63	39.668795	-104.680290
	8500.00	90.00	270.24	7950.00	1040.52	-752.14	-991.99	0.00	1669527.88	3230651.63	39.668796	-104.680645
	8600.00	90.00	270.24	7950.00	1140.26	-751.73	-1091.99	0.00	1669527.39	3230551.63	39.668797	-104.681000
	8700.00	90.00	270.24	7950.00	1240.01	-751.32	-1191.99	0.00	1669526.89	3230451.63	39.668798	-104.681355
	8800.00	90.00	270.24	7950.00	1339.75	-750.91	-1291.99	0.00	1669526.40	3230351.63	39.668799	-104.681710
	8900.00	90.00	270.24	7950.00	1439.49	-750.49	-1391.98	0.00	1669525.90	3230251.64	39.668801	-104.682066
	9000.00	90.00	270.24	7950.00	1539.24	-750.08	-1491.98	0.00	1669525.41	3230151.64	39.668802	-104.682421
	9100.00	90.00	270.24	7950.00	1638.98	-749.67	-1591.98	0.00	1669524.92	3230051.65	39.668803	-104.682776
	9200.00	90.00	270.24	7950.00	1738.72	-749.26	-1691.98	0.00	1669524.42	3229951.65	39.668804	-104.683131
	9300.00	90.00	270.24	7950.00	1838.46	-748.85	-1791.98	0.00	1669523.93	3229851.65	39.668805	-104.683487
	9400.00	90.00	270.24	7950.00	1938.21	-748.44	-1891.98	0.00	1669523.43	3229751.66	39.668806	-104.683842
	9500.00	90.00	270.24	7950.00	2037.95	-748.03	-1991.98	0.00	1669522.94	3229651.66	39.668807	-104.684197
	9600.00	90.00	270.24	7950.00	2137.69	-747.61	-2091.98	0.00	1669522.44	3229551.66	39.668808	-104.684552
	9700.00	90.00	270.24	7950.00	2237.44	-747.20	-2191.98	0.00	1669521.95	3229451.67	39.668809	-104.684907
	9800.00	90.00	270.24	7950.00	2337.18	-746.79	-2291.98	0.00	1669521.46	3229351.67	39.668811	-104.685263
	9900.00	90.00	270.24	7950.00	2436.92	-746.38	-2391.98	0.00	1669520.96	3229251.67	39.668812	-104.685618
	10000.00	90.00	270.24	7950.00	2536.67	-745.97	-2491.98	0.00	1669520.47	3229151.67	39.668813	-104.685973
	10100.00	90.00	270.24	7950.00	2636.41	-745.56	-2591.97	0.00	1669519.97	3229051.68	39.668814	-104.686328
	10200.00	90.00	270.24	7950.00	2736.15	-745.14	-2691.97	0.00	1669519.48	3228951.68	39.668815	-104.686684
	10300.00	90.00	270.24	7950.00	2835.89	-744.73	-2791.97	0.00	1669518.98	3228851.68	39.668816	-104.687039
	10400.00	90.00	270.24	7950.00	2935.64	-744.32	-2891.97	0.00	1669518.49	3228751.68	39.668817	-104.687394
	10500.00	90.00	270.24	7950.00	3035.38	-743.91	-2991.97	0.00	1669518.00	3228651.69	39.668818	-104.687749
	10600.00	90.00	270.24	7950.00	3135.12	-743.50	-3091.97	0.00	1669517.50	3228551.69	39.668819	-104.688104
	10700.00	90.00	270.24	7950.00	3234.87	-743.09	-3191.97	0.00	1669517.01	3228451.69	39.668820	-104.688460
	10800.00	90.00	270.24	7950.00	3334.61	-742.68	-3291.97	0.00	1669516.51	3228351.70	39.668822	-104.688815
	10900.00	90.00	270.24	7950.00	3434.35	-742.26	-3391.97	0.00	1669516.02	3228251.70	39.668823	-104.689170
	11000.00	90.00	270.24	7950.00	3534.10	-741.85	-3491.97	0.00	1669515.52	3228151.70	39.668824	-104.689525
	11100.00	90.00	270.24	7950.00	3633.84	-741.44	-3591.97	0.00	1669515.03	3228051.70	39.668825	-104.689881
	11200.00	90.00	270.24	7950.00	3733.58	-741.03	-3691.96	0.00	1669514.54	3227951.71	39.668826	-104.690236
	11300.00	90.00	270.24	7950.00	3833.33	-740.62	-3791.96	0.00	1669514.04	3227851.71	39.668827	-104.690591
	11400.00	90.00	270.24	7950.00	3933.07	-740.21	-3891.96	0.00	1669513.55	3227751.71	39.668828	-104.690946
	11500.00	90.00	270.24	7950.00	4032.81	-739.80	-3991.96	0.00	1669513.05	3227651.72	39.668829	-104.691301
	11600.00	90.00	270.24	7950.00	4132.55	-739.38	-4091.96	0.00	1669512.56	3227551.72	39.668830	-104.691657
	11700.00	90.00	270.24	7950.00	4232.30	-738.97	-4191.96	0.00	1669512.06	3227451.72	39.668831	-104.692012
	11800.00	90.00	270.24	7950.00	4332.04	-738.56	-4291.96	0.00	1669511.57	3227351.72	39.668832	-104.692367
	11900.00	90.00	270.24	7950.00	4431.78	-738.15	-4391.96	0.00	1669511.08	3227251.73	39.668834	-104.692722
	12000.00	90.00	270.24	7950.00	4531.53	-737.74	-4491.96	0.00	1669510.58	3227151.73	39.668835	-104.693078
	12100.00	90.00	270.24	7950.00	4631.27	-737.33	-4591.96	0.00	1669510.09	3227051.73	39.668836	-104.693433
	12200.00	90.00	270.24	7950.00	4731.01	-736.91	-4691.96	0.00	1669509.59	3226951.74	39.668837	-104.693788
	12300.00	90.00	270.24	7950.00	4830.76	-736.50	-4791.96	0.00	1669509.10	3226851.74	39.668838	-104.694143
	12400.00	90.00	270.24	7950.00	4930.50	-736.09	-4891.95	0.00	1669508.60	3226751.74	39.668839	-104.694498
	12500.00	90.00	270.24	7950.00	5030.24	-735.68	-4991.95	0.00	1669508.11	3226651.74	39.668840	-104.694854
	12600.00	90.00	270.24	7950.00	5129.98	-735.27	-5091.95	0.00	1669507.62	3226551.75	39.668841	-104.695209
	12700.00	90.00	270.24	7950.00	5229.73	-734.86	-5191.95	0.00	1669507.12	3226451.75	39.668842	-104.695564
	12800.00	90.00	270.24	7950.00	5329.47	-734.45	-5291.95	0.00	1669506.63	3226351.75	39.668843	-104.695919
	12900.00	90.00	270.24	7950.00	5429.21	-734.03	-5391.95	0.00	1669506.13	3226251.75	39.668844	-104.696275
	13000.00	90.00	270.24	7950.00	5528.96	-733.62	-5491.95	0.00	1669505.64	3226151.76	39.668845	-104.696630
	13100.00	90.00	270.24	7950.00	5628.70	-733.21	-5591.95	0.00	1669505.14	3226051.76	39.668846	-104.696985
	13200.00	90.00	270.24	7950.00	5728.44	-732.80	-5691.95	0.00	1669504.65	3225951.76	39.668848	-104.697340
	13300.00	90.00	270.24	7950.00	5828.19	-732.39	-5791.95	0.00	1669504.16	3225851.77	39.668849	-104.697695
	13400.00	90.00	270.24	7950.00	5927.93	-731.98	-5891.95	0.00	1669503.66	3225751.77	39.668850	-104.698051
	13500.00	90.00	270.24	7950.00	6027.67	-731.57	-5991.95	0.00	1669503.17	3225651.77	39.668851	-104.698406
	13600.00	90.00	270.24	7950.00	6127.42	-731.15	-6091.94	0.00	1669502.67	3225551.78	39.668852	-104.698761
	13700.00	90.00	270.24	7950.00	6227.16	-730.74	-6191.94	0.00	1669502.18	3225451.78	39.668853	-104.699116
	13800.00	90.00	270.24	7950.00	6326.90	-730.33	-6291.94	0.00	1669501.68	3225351.78	39.668854	-104.699472
	13900.00	90.00	270.24	7950.00	6426.64	-729.92	-6391.94	0.00	1669501.19	3225251.79	39.668855	-104.699827
	14000.00	90.00	270.24	7950.00	6526.39	-729.51	-6491.94	0.00	1669500.70	3225151.79	39.668856	-104.700182
	14100.00	90.00	270.24	7950.00	6626.13	-729.10	-6591.94	0.00	1669500.20	3225051.79	39.668857	-104.700537
	14200.00	90.00	270.24	7950.00	6725.87	-728.68	-6691.94	0.00	1669499.71	3224951.79	39.668858	-104.700892
	14300.00	90.00	270.24	7950.00	6825.62	-728.27	-6791.94	0.00	1669499.21	3224851.80	39.668859	-104.701248
	14400.00	90.00	270.24	7950.00	6925.36	-727.86	-6891.94	0.00	1669498.72	3224751.80	39.668860	-104.701603
	14500.00	90.00	270.24	7950.00	7025.10	-727.45	-6991.94	0.00	1669498.22	3224651.80	39.668861	-104.701958
	14600.00	90.00	270.24	7950.00	7124.85	-727.04	-7091.94	0.00	1669497.73	3224551.81	39.668862	-104.702313
	14700.00	90.00	270.24	7950.00	7224.59	-726.63	-7191.94	0.00	1669497.24	3224451.81	39.668863	-104.702669
	14800.00	90.00	270.24	7950.00	7324.33	-726.22	-7291.93	0.00	1669496.74	3224351.81	39.668865	-104.703024
	14900.00	90.00	270.24	7950.00	7424.07	-725.80	-7391.93	0.00				

Comments	MD (ft)	Incl (°)	Azim True (°)	TVD (ft)	VSEC (ft)	NS (ft)	EW (ft)	DLS (°/100ft)	Northing (ftUS)	Easting (ftUS)	Latitude (°)	Longitude (°)
Rush 4-65 29-30 4CH BHL	18000.00 18039.45	90.00 90.00	270.24 270.24	7950.00 7950.00	10516.11 10555.46	-713.05 -712.89	-10491.91 -10531.36	0.00 0.00	1669480.92 1669480.73	3221151.90 3221112.45	39.668898 39.668898	-104.714391 -104.714531

Survey Type: Def Plan

Survey Error Model: ISCWSA Rev 0 *** 3-D 95.000% Confidence 2.7955 sigma
Survey Program:

Description	Part	MD From (ft)	MD To (ft)	EOU Freq (ft)	Hole Size (in)	Casing Diameter (in)	Expected Max Inclination (deg)	Survey Tool Type	Borehole / Survey
	1	0.000	28.000	1/100.000	13.500	9.625		NAL_MWD_PLUS_0.5_DEG- Depth Only	Original Hole / Rush 4-65 29-30 4CH Plan #0
	1	28.000	2000.000	1/100.000	13.500	9.625		NAL_MWD_PLUS_0.5_DEG	Original Hole / Rush 4-65 29-30 4CH Plan #0
	1	2000.000	18039.454	1/100.000	8.500	5.500		NAL_MWD_PLUS_0.5_DEG	Original Hole / Rush 4-65 29-30 4CH Plan #0