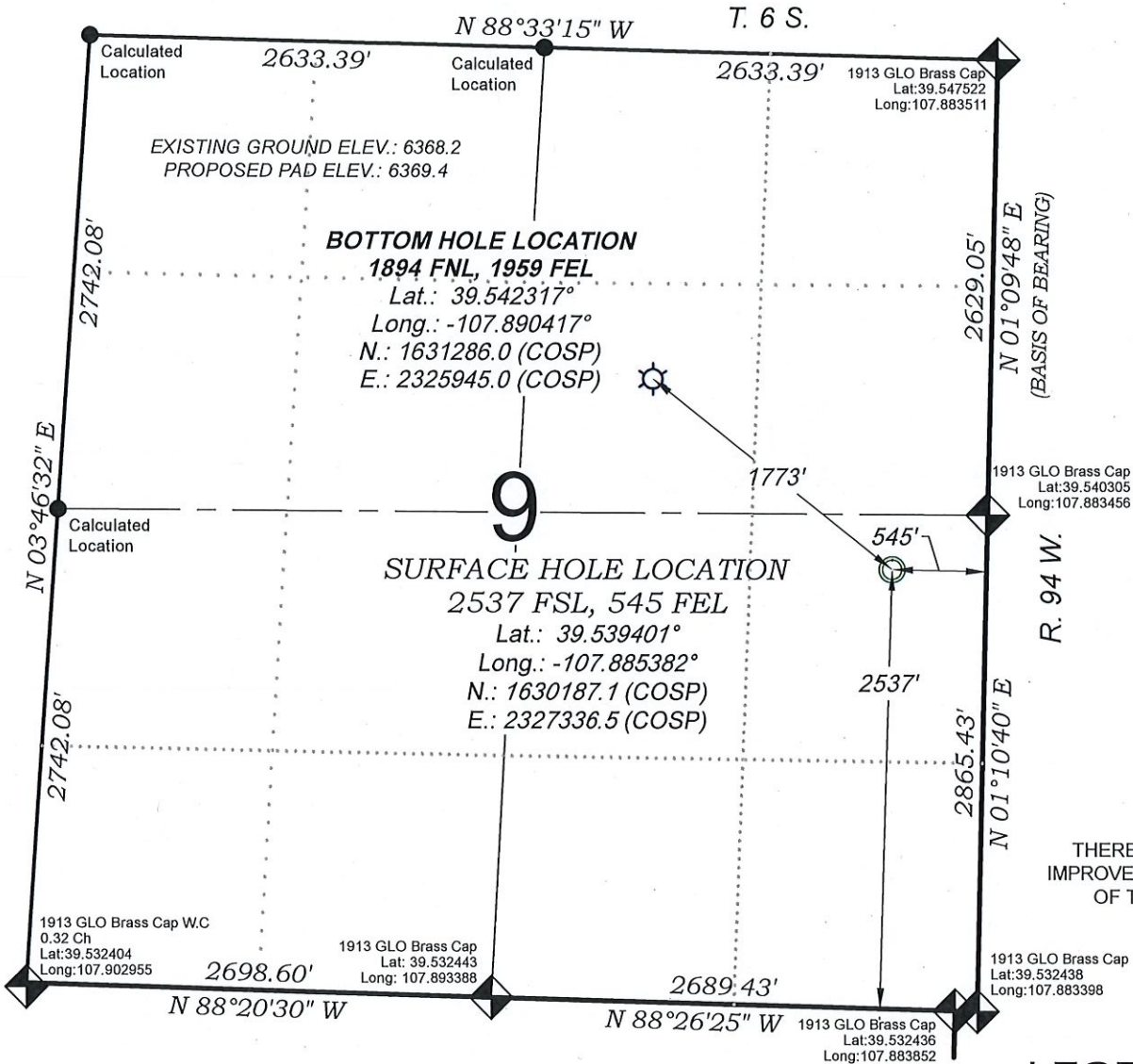


Federal RWF 332-9



SURVEYORS STATEMENT

I, MICHAEL J. LANGHORNE, A REGISTERED LAND SURVEYOR IN THE STATE OF COLORADO DO HEREBY CERTIFY THAT THE SURVEY SHOWN HEREON WAS PREPARED UNDER MY DIRECT SUPERVISION AND HAS BEEN STAKED ON THE GROUND AS SHOWN ON THE PLAT AND CHECKING THAT THIS MAP IS A TRUE REPRESENTATION THEREOF.

Michael J. Langhorne

MICHAEL J. LANGHORNE, COLORADO REGISTRATION NO. 36572
FOR AND ON BEHALF OF
BOOKCLIFF SURVEY SERVICES, INC.

REFERENCES

- 1) DEPENDENT RESURVEY T. 6 S., R. 94 W., 6th P.M. (GLO PLAT)
- 2) U.S.G.S. QUAD: ANVIL POINTS, CO

REVISED: 5/15/20

- LEGEND -

FIELD LOCATED SECTION
MONUMENTS AS DESCRIBED



FIELD SURVEYED
WELL LOCATION



CALCULATED BOTTOM
HOLE LOCATION



CALCULATED SECTION
CORNER LOCATION



NOTES

- 1) ELEVATIONS BASED ON N.A.V.D. 1988 PUBLISHED COORDINATES.
- 2) LATITUDES AND LONGITUDES ARE BASE ON NAD 83, PUBLISHED COORDINATES
- 3) STATE PLANE COORDINATES ARE BASED ON COLORADO CENTRAL ZONE, U.S. SURVEY FEET.
- 4) ELEVATION MASK SET TO 15"
- 5) GPS OPERATOR J. KIRKPATRICK, OBSERVED A PDOP 3.2 ON SURVEY POINT NUMBER 10319.
- 6) SURFACE AND BOTTOM HOLE LOCATIONS ARE MEASURED 90° FROM SECTION LINES.

WELL LOCATION PLAT Prepared for:



TEP Rocky Mountain LLC

NE1/4 SE1/4, SECTION 9
T. 6 S., R. 94 W. of the 6th. P.M.
GARFIELD COUNTY, COLORADO

136 East Third Street
Rifle, Colorado
81650 Ph. (970)
625-2720 Fax (970)
625-2773



BOOKCLIFF
Survey Services, Inc.

SURVEY DATE: 7/24/13
MAP DATE: 3/16/20
SCALE: 1" = 1000'
PLAT: 1 of 1
PROJECT: TEP Valley