

Bison Oil & Gas II, LLC

WELD COUNTY, COLORADO (NAD 83)

HUNT 8-60 17B

HUNT FED 8-60 17B-20-5

Wellbore #1

Plan: Design #1

Standard Survey Report

26 May, 2020



Project: WELD COUNTY, COLORADO (NAD 83)
Site: HUNT 8-60 17B
Well: HUNT FED 8-60 17B-20-5
Wellbore: Wellbore #1
Design: Design #1



Azimuths to True North
Magnetic North: 8.69°
Magnetic Field
Strength: 53508.4nT
Dip Angle: 67.43°
Date: 12/31/2009
Model: IGRF200510

ANNOTATIONS

MD	Inc	Azi	TVD	+N/-S	+E/-W	Vsect	Dep	Annotation
800.0	0.00	0.00	800.0	0.0	0.0	0.0	0.0	Start Build 10.00
1011.0	21.10	96.00	1006.3	-4.0	38.2	12.7	38.4	Start 5352.6 hold at 1011.0 MD
6363.6	21.10	96.00	6000.0	-205.4	1954.6	651.4	1965.3	Start DLS 15.55 TFO -151.87
6436.3	12.29	70.26	6069.7	-204.2	1974.9	654.9	1986.2	Start DLS 15.55 TFO 110.36
7043.0	90.00	181.06	6458.0	-573.0	2047.2	1030.4	2423.2	Start DLS 0.00 TFO 90.00
14382.2	90.00	181.18	6458.0	-7910.8	1904.1	8136.7	9762.4	Start 99.8 hold at 14382.01 MD
14481.9	90.00	181.18	6458.0	-8010.6	1902.0	8233.3	9862.2	TD at 14481.9

PROPOSED LOCAL COORDINATES:

SHL: 2366 ft FNL & 2363 ft FEL Sec 17

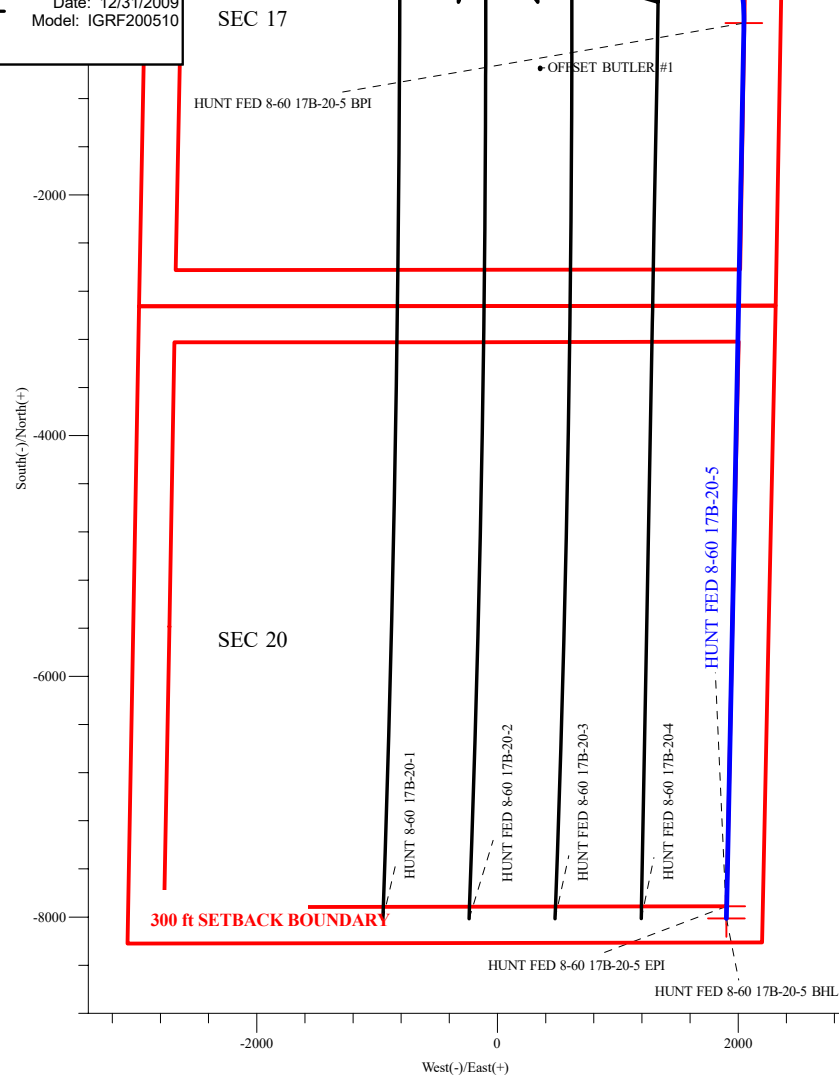
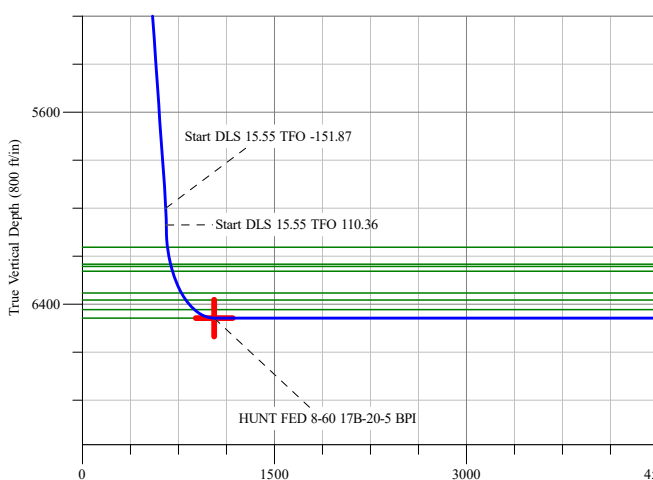
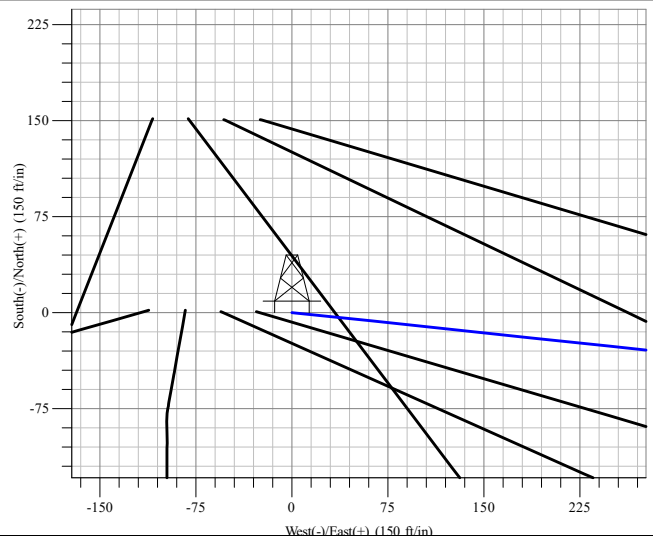
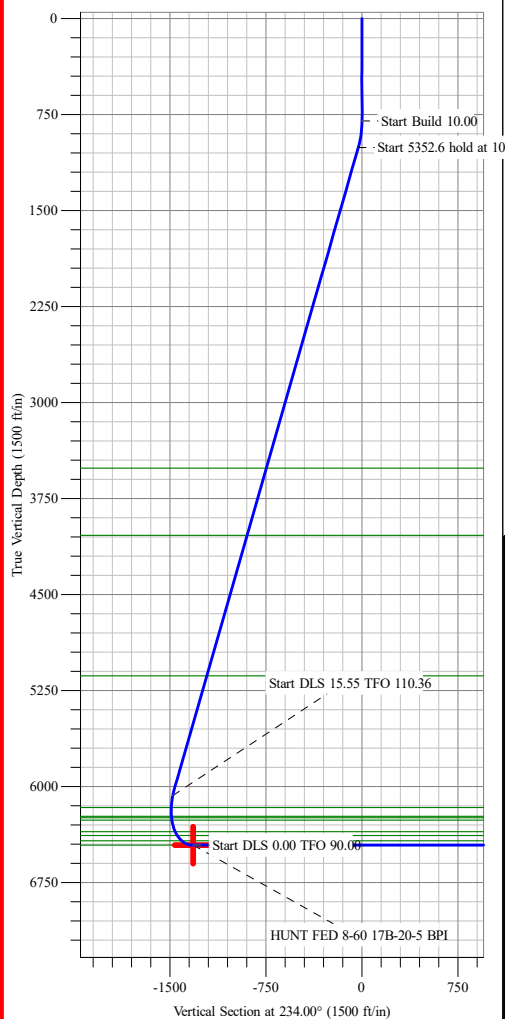
BPI: 2348 ft FSL & 306 ft FEL Sec 17

EPI: 300 ft FSL & 300 ft FEL Sec 20

BHL: 200 ft FSL & 300 ft FEL Sec 20

WELLBORE TARGET DETAILS (LAT/LONG)

Name	TVD	+N/-S	+E/-W	Northing	Easting	Latitude	Longitude
HUNT FED 8-60 17B-20-5 BPI	6458.0	-573.0	2047.2	453196.12	1032203.70	40° 39' 41.378 N 104° 6' 24.736 W	
HUNT FED 8-60 17B-20-5 EPI	6458.0	-7910.8	1904.1	450959.15	1032195.02	40° 38' 28.871 N 104° 6' 26.600 W	
HUNT FED 8-60 17B-20-5 BHL	6458.0	-8010.6	1901.8	450928.71	1032194.82	40° 38' 27.884 N 104° 6' 26.629 W	Point



Vertical Section at 166.64° (1500 ft/in)

Survey Report

Company:	Bison Oil & Gas II, LLC	Local Co-ordinate Reference:	Well HUNT FED 8-60 17B-20-5
Project:	WELD COUNTY, COLORADO (NAD 83)	TVD Reference:	GL @ 4938.6ft
Site:	HUNT 8-60 17B	MD Reference:	GL @ 4938.6ft
Well:	HUNT FED 8-60 17B-20-5	North Reference:	True
Wellbore:	Wellbore #1	Survey Calculation Method:	Minimum Curvature
Design:	Design #1	Database:	EDM 5000.16 Single User Db

Project	WELD COUNTY, COLORADO (NAD 83),		
Map System:	US State Plane 1983	System Datum:	Mean Sea Level
Geo Datum:	North American Datum 1983		
Map Zone:	Colorado Northern Zone		

Site	HUNT 8-60 17B		
Site Position:		Northing:	453,564.15 m
From:	Lat/Long	Easting:	1,041,236.06 m
Position Uncertainty:	0.0 ft	Slot Radius:	13.200 in
		Latitude:	40° 39' 48.532 N
		Longitude:	104° 0' 0.000 W

Well	HUNT FED 8-60 17B-20-5		
Well Position	+N/-S	0.0 ft	Northing: 453,360.99 m
	+E/-W	0.0 ft	Easting: 1,031,577.06 m
Position Uncertainty	0.0 ft	Wellhead Elevation:	ft
Grid Convergence:	0.90 °	Ground Level:	4,938.6 ft

Wellbore	Wellbore #1				
Magnetics	Model Name	Sample Date	Declination (°)	Dip Angle (°)	Field Strength (nT)
	IGRF200510	12/31/2009	8.69	67.43	53,508.41381676

Design	Design #1				
Audit Notes:					
Version:	Phase:	PROTOTYPE	Tie On Depth:	0.0	
Vertical Section:	Depth From (TVD) (ft)	+N/-S (ft)	+E/-W (ft)	Direction (°)	
	0.0	0.0	0.0	166.64	

Survey Tool Program	Date 5/26/2020			
From (ft)	To (ft)	Survey (Wellbore)	Tool Name	Description
0.0	14,482.0	Design #1 (Wellbore #1)	MWD	Fixed:v2:standard declination

Planned Survey										
Measured Depth (ft)	Inclination (°)	Azimuth (°)	Vertical Depth (ft)	+N/-S (ft)	+E/-W (ft)	Vertical Section (ft)	Dogleg Rate (°/100ft)	Build Rate (°/100ft)	Turn Rate (°/100ft)	
0.0	0.00	0.00	0.0	0.0	0.0	0.0	0.00	0.00	0.00	
100.0	0.00	0.00	100.0	0.0	0.0	0.0	0.00	0.00	0.00	
200.0	0.00	0.00	200.0	0.0	0.0	0.0	0.00	0.00	0.00	
300.0	0.00	0.00	300.0	0.0	0.0	0.0	0.00	0.00	0.00	
400.0	0.00	0.00	400.0	0.0	0.0	0.0	0.00	0.00	0.00	
500.0	0.00	0.00	500.0	0.0	0.0	0.0	0.00	0.00	0.00	
600.0	0.00	0.00	600.0	0.0	0.0	0.0	0.00	0.00	0.00	
700.0	0.00	0.00	700.0	0.0	0.0	0.0	0.00	0.00	0.00	
800.0	0.00	0.00	800.0	0.0	0.0	0.0	0.00	0.00	0.00	
Start Build 10.00										

Survey Report

Company:	Bison Oil & Gas II, LLC	Local Co-ordinate Reference:	Well HUNT FED 8-60 17B-20-5
Project:	WELD COUNTY, COLORADO (NAD 83)	TVD Reference:	GL @ 4938.6ft
Site:	HUNT 8-60 17B	MD Reference:	GL @ 4938.6ft
Well:	HUNT FED 8-60 17B-20-5	North Reference:	True
Wellbore:	Wellbore #1	Survey Calculation Method:	Minimum Curvature
Design:	Design #1	Database:	EDM 5000.16 Single User Db

Planned Survey

Measured Depth (ft)	Inclination (°)	Azimuth (°)	Vertical Depth (ft)	+N/-S (ft)	+E/-W (ft)	Vertical Section (ft)	Dogleg Rate (°/100ft)	Build Rate (°/100ft)	Turn Rate (°/100ft)
900.0	10.00	96.00	899.5	-0.9	8.7	2.9	10.00	10.00	0.00
1,000.0	20.00	96.00	996.0	-3.6	34.4	11.5	10.00	10.00	0.00
1,011.0	21.10	96.00	1,006.3	-4.0	38.2	12.7	10.00	10.00	0.00
Start 5352.61 hold at 1011.00 MD									
1,100.0	21.10	96.00	1,089.3	-7.4	70.1	23.4	0.00	0.00	0.00
1,200.0	21.10	96.00	1,182.6	-11.1	105.9	35.3	0.00	0.00	0.00
1,300.0	21.10	96.00	1,275.9	-14.9	141.7	47.2	0.00	0.00	0.00
1,400.0	21.10	96.00	1,369.2	-18.7	177.5	59.1	0.00	0.00	0.00
1,500.0	21.10	96.00	1,462.5	-22.4	213.3	71.1	0.00	0.00	0.00
1,600.0	21.10	96.00	1,555.8	-26.2	249.1	83.0	0.00	0.00	0.00
1,700.0	21.10	96.00	1,649.1	-29.9	284.9	94.9	0.00	0.00	0.00
1,800.0	21.10	96.00	1,742.4	-33.7	320.7	106.9	0.00	0.00	0.00
1,900.0	21.10	96.00	1,835.7	-37.5	356.5	118.8	0.00	0.00	0.00
2,000.0	21.10	96.00	1,929.0	-41.2	392.3	130.7	0.00	0.00	0.00
2,100.0	21.10	96.00	2,022.2	-45.0	428.1	142.7	0.00	0.00	0.00
2,200.0	21.10	96.00	2,115.5	-48.8	463.9	154.6	0.00	0.00	0.00
2,300.0	21.10	96.00	2,208.8	-52.5	499.7	166.5	0.00	0.00	0.00
2,400.0	21.10	96.00	2,302.1	-56.3	535.5	178.5	0.00	0.00	0.00
2,500.0	21.10	96.00	2,395.4	-60.0	571.3	190.4	0.00	0.00	0.00
2,600.0	21.10	96.00	2,488.7	-63.8	607.1	202.3	0.00	0.00	0.00
2,700.0	21.10	96.00	2,582.0	-67.6	642.9	214.3	0.00	0.00	0.00
2,800.0	21.10	96.00	2,675.3	-71.3	678.7	226.2	0.00	0.00	0.00
2,900.0	21.10	96.00	2,768.6	-75.1	714.5	238.1	0.00	0.00	0.00
3,000.0	21.10	96.00	2,861.9	-78.9	750.3	250.1	0.00	0.00	0.00
3,100.0	21.10	96.00	2,955.2	-82.6	786.1	262.0	0.00	0.00	0.00
3,200.0	21.10	96.00	3,048.5	-86.4	821.9	273.9	0.00	0.00	0.00
3,300.0	21.10	96.00	3,141.8	-90.2	857.7	285.9	0.00	0.00	0.00
3,400.0	21.10	96.00	3,235.1	-93.9	893.5	297.8	0.00	0.00	0.00
3,500.0	21.10	96.00	3,328.4	-97.7	929.3	309.7	0.00	0.00	0.00
3,600.0	21.10	96.00	3,421.7	-101.4	965.1	321.7	0.00	0.00	0.00
3,700.0	21.10	96.00	3,515.0	-105.2	1,000.9	333.6	0.00	0.00	0.00
3,800.0	21.10	96.00	3,608.3	-109.0	1,036.7	345.5	0.00	0.00	0.00
3,900.0	21.10	96.00	3,701.6	-112.7	1,072.5	357.5	0.00	0.00	0.00
4,000.0	21.10	96.00	3,794.9	-116.5	1,108.3	369.4	0.00	0.00	0.00
4,100.0	21.10	96.00	3,888.2	-120.3	1,144.1	381.3	0.00	0.00	0.00
4,200.0	21.10	96.00	3,981.5	-124.0	1,179.9	393.2	0.00	0.00	0.00
4,300.0	21.10	96.00	4,074.7	-127.8	1,215.7	405.2	0.00	0.00	0.00
4,400.0	21.10	96.00	4,168.0	-131.5	1,251.5	417.1	0.00	0.00	0.00
4,500.0	21.10	96.00	4,261.3	-135.3	1,287.4	429.0	0.00	0.00	0.00
4,600.0	21.10	96.00	4,354.6	-139.1	1,323.2	441.0	0.00	0.00	0.00
4,700.0	21.10	96.00	4,447.9	-142.8	1,359.0	452.9	0.00	0.00	0.00
4,800.0	21.10	96.00	4,541.2	-146.6	1,394.8	464.8	0.00	0.00	0.00
4,900.0	21.10	96.00	4,634.5	-150.4	1,430.6	476.8	0.00	0.00	0.00

Survey Report

Company:	Bison Oil & Gas II, LLC	Local Co-ordinate Reference:	Well HUNT FED 8-60 17B-20-5
Project:	WELD COUNTY, COLORADO (NAD 83)	TVD Reference:	GL @ 4938.6ft
Site:	HUNT 8-60 17B	MD Reference:	GL @ 4938.6ft
Well:	HUNT FED 8-60 17B-20-5	North Reference:	True
Wellbore:	Wellbore #1	Survey Calculation Method:	Minimum Curvature
Design:	Design #1	Database:	EDM 5000.16 Single User Db

Planned Survey

Measured Depth (ft)	Inclination (°)	Azimuth (°)	Vertical Depth (ft)	+N/-S (ft)	+E/-W (ft)	Vertical Section (ft)	Dogleg Rate (°/100ft)	Build Rate (°/100ft)	Turn Rate (°/100ft)
5,000.0	21.10	96.00	4,727.8	-154.1	1,466.4	488.7	0.00	0.00	0.00
5,100.0	21.10	96.00	4,821.1	-157.9	1,502.2	500.6	0.00	0.00	0.00
5,200.0	21.10	96.00	4,914.4	-161.6	1,538.0	512.6	0.00	0.00	0.00
5,300.0	21.10	96.00	5,007.7	-165.4	1,573.8	524.5	0.00	0.00	0.00
5,400.0	21.10	96.00	5,101.0	-169.2	1,609.6	536.4	0.00	0.00	0.00
5,500.0	21.10	96.00	5,194.3	-172.9	1,645.4	548.4	0.00	0.00	0.00
5,600.0	21.10	96.00	5,287.6	-176.7	1,681.2	560.3	0.00	0.00	0.00
5,700.0	21.10	96.00	5,380.9	-180.5	1,717.0	572.2	0.00	0.00	0.00
5,800.0	21.10	96.00	5,474.2	-184.2	1,752.8	584.2	0.00	0.00	0.00
5,900.0	21.10	96.00	5,567.5	-188.0	1,788.6	596.1	0.00	0.00	0.00
6,000.0	21.10	96.00	5,660.8	-191.8	1,824.4	608.0	0.00	0.00	0.00
6,100.0	21.10	96.00	5,754.1	-195.5	1,860.2	620.0	0.00	0.00	0.00
6,200.0	21.10	96.00	5,847.4	-199.3	1,896.0	631.9	0.00	0.00	0.00
6,300.0	21.10	96.00	5,940.7	-203.0	1,931.8	643.8	0.00	0.00	0.00
6,363.6	21.10	96.00	6,000.0	-205.4	1,954.6	651.4	0.00	0.00	0.00
Start DLS 15.55 TFO -151.87									
6,400.0	16.32	86.48	6,034.5	-205.8	1,966.2	654.5	15.55	-13.14	-26.16
6,436.3	12.29	70.26	6,069.7	-204.2	1,974.9	654.9	15.55	-11.10	-44.65
Start DLS 15.55 TFO 110.36									
6,500.0	12.77	117.09	6,132.0	-205.1	1,987.6	658.7	15.55	0.75	73.56
6,600.0	23.92	153.74	6,227.0	-228.5	2,006.5	685.8	15.55	11.15	36.64
6,700.0	38.19	166.06	6,312.6	-276.9	2,023.1	736.8	15.55	14.26	12.32
6,800.0	53.10	172.27	6,382.3	-347.0	2,036.0	807.9	15.55	14.92	6.21
6,900.0	68.24	176.40	6,431.2	-433.5	2,044.3	894.0	15.55	15.13	4.13
7,000.0	83.45	179.72	6,455.6	-530.1	2,047.5	988.8	15.55	15.22	3.32
7,043.0	90.00	181.06	6,458.0	-573.0	2,047.2	1,030.4	15.55	15.24	3.12
Start 7339.04 hold at 7042.96 MD									
7,100.0	90.00	181.06	6,458.0	-630.0	2,046.2	1,085.6	0.00	0.00	0.00
7,200.0	90.00	181.06	6,458.0	-730.0	2,044.3	1,182.5	0.00	0.00	0.00
7,300.0	90.00	181.06	6,458.0	-830.0	2,042.4	1,279.4	0.00	0.00	0.00
7,400.0	90.00	181.06	6,458.0	-929.9	2,040.6	1,376.2	0.00	0.00	0.00
7,500.0	90.00	181.07	6,458.0	-1,029.9	2,038.7	1,473.0	0.00	0.00	0.00
7,600.0	90.00	181.07	6,458.0	-1,129.9	2,036.9	1,569.9	0.00	0.00	0.00
7,700.0	90.00	181.07	6,458.0	-1,229.9	2,035.0	1,666.7	0.00	0.00	0.00
7,800.0	90.00	181.07	6,458.0	-1,329.9	2,033.1	1,763.6	0.00	0.00	0.00
7,900.0	90.00	181.07	6,458.0	-1,429.9	2,031.3	1,860.4	0.00	0.00	0.00
8,000.0	90.00	181.07	6,458.0	-1,529.8	2,029.4	1,957.3	0.00	0.00	0.00
8,100.0	90.00	181.08	6,458.0	-1,629.8	2,027.5	2,054.1	0.00	0.00	0.00
8,200.0	90.00	181.08	6,458.0	-1,729.8	2,025.6	2,151.0	0.00	0.00	0.00
8,300.0	90.00	181.08	6,458.0	-1,829.8	2,023.8	2,247.8	0.00	0.00	0.00
8,400.0	90.00	181.08	6,458.0	-1,929.8	2,021.9	2,344.7	0.00	0.00	0.00
8,500.0	90.00	181.08	6,458.0	-2,029.8	2,020.0	2,441.5	0.00	0.00	0.00
8,600.0	90.00	181.08	6,458.0	-2,129.7	2,018.1	2,538.3	0.00	0.00	0.00
8,700.0	90.00	181.09	6,458.0	-2,229.7	2,016.2	2,635.2	0.00	0.00	0.00

Survey Report

Company:	Bison Oil & Gas II, LLC	Local Co-ordinate Reference:	Well HUNT FED 8-60 17B-20-5
Project:	WELD COUNTY, COLORADO (NAD 83)	TVD Reference:	GL @ 4938.6ft
Site:	HUNT 8-60 17B	MD Reference:	GL @ 4938.6ft
Well:	HUNT FED 8-60 17B-20-5	North Reference:	True
Wellbore:	Wellbore #1	Survey Calculation Method:	Minimum Curvature
Design:	Design #1	Database:	EDM 5000.16 Single User Db

Planned Survey									
Measured Depth (ft)	Inclination (°)	Azimuth (°)	Vertical Depth (ft)	+N/-S (ft)	+E/-W (ft)	Vertical Section (ft)	Dogleg Rate (°/100ft)	Build Rate (°/100ft)	Turn Rate (°/100ft)
8,800.0	90.00	181.09	6,458.0	-2,329.7	2,014.3	2,732.0	0.00	0.00	0.00
8,900.0	90.00	181.09	6,458.0	-2,429.7	2,012.4	2,828.9	0.00	0.00	0.00
9,000.0	90.00	181.09	6,458.0	-2,529.7	2,010.5	2,925.7	0.00	0.00	0.00
9,100.0	90.00	181.09	6,458.0	-2,629.6	2,008.6	3,022.5	0.00	0.00	0.00
9,200.0	90.00	181.09	6,458.0	-2,729.6	2,006.7	3,119.4	0.00	0.00	0.00
9,300.0	90.00	181.10	6,458.0	-2,829.6	2,004.8	3,216.2	0.00	0.00	0.00
9,400.0	90.00	181.10	6,458.0	-2,929.6	2,002.9	3,313.0	0.00	0.00	0.00
9,500.0	90.00	181.10	6,458.0	-3,029.6	2,001.0	3,409.9	0.00	0.00	0.00
9,600.0	90.00	181.10	6,458.0	-3,129.6	1,999.0	3,506.7	0.00	0.00	0.00
9,700.0	90.00	181.10	6,458.0	-3,229.5	1,997.1	3,603.5	0.00	0.00	0.00
9,800.0	90.00	181.10	6,458.0	-3,329.5	1,995.2	3,700.4	0.00	0.00	0.00
9,900.0	90.00	181.10	6,458.0	-3,429.5	1,993.3	3,797.2	0.00	0.00	0.00
10,000.0	90.00	181.11	6,458.0	-3,529.5	1,991.3	3,894.0	0.00	0.00	0.00
10,100.0	90.00	181.11	6,458.0	-3,629.5	1,989.4	3,990.9	0.00	0.00	0.00
10,200.0	90.00	181.11	6,458.0	-3,729.4	1,987.5	4,087.7	0.00	0.00	0.00
10,300.0	90.00	181.11	6,458.0	-3,829.4	1,985.5	4,184.5	0.00	0.00	0.00
10,400.0	90.00	181.11	6,458.0	-3,929.4	1,983.6	4,281.4	0.00	0.00	0.00
10,500.0	90.00	181.11	6,458.0	-4,029.4	1,981.6	4,378.2	0.00	0.00	0.00
10,600.0	90.00	181.12	6,458.0	-4,129.4	1,979.7	4,475.0	0.00	0.00	0.00
10,700.0	90.00	181.12	6,458.0	-4,229.3	1,977.8	4,571.8	0.00	0.00	0.00
10,800.0	90.00	181.12	6,458.0	-4,329.3	1,975.8	4,668.7	0.00	0.00	0.00
10,900.0	90.00	181.12	6,458.0	-4,429.3	1,973.8	4,765.5	0.00	0.00	0.00
11,000.0	90.00	181.12	6,458.0	-4,529.3	1,971.9	4,862.3	0.00	0.00	0.00
11,100.0	90.00	181.12	6,458.0	-4,629.3	1,969.9	4,959.1	0.00	0.00	0.00
11,200.0	90.00	181.13	6,458.0	-4,729.3	1,968.0	5,056.0	0.00	0.00	0.00
11,300.0	90.00	181.13	6,458.0	-4,829.2	1,966.0	5,152.8	0.00	0.00	0.00
11,400.0	90.00	181.13	6,458.0	-4,929.2	1,964.0	5,249.6	0.00	0.00	0.00
11,500.0	90.00	181.13	6,458.0	-5,029.2	1,962.1	5,346.4	0.00	0.00	0.00
11,600.0	90.00	181.13	6,458.0	-5,129.2	1,960.1	5,443.2	0.00	0.00	0.00
11,700.0	90.00	181.13	6,458.0	-5,229.2	1,958.1	5,540.1	0.00	0.00	0.00
11,800.0	90.00	181.13	6,458.0	-5,329.1	1,956.1	5,636.9	0.00	0.00	0.00
11,900.0	90.00	181.14	6,458.0	-5,429.1	1,954.1	5,733.7	0.00	0.00	0.00
12,000.0	90.00	181.14	6,458.0	-5,529.1	1,952.2	5,830.5	0.00	0.00	0.00
12,100.0	90.00	181.14	6,458.0	-5,629.1	1,950.2	5,927.3	0.00	0.00	0.00
12,200.0	90.00	181.14	6,458.0	-5,729.1	1,948.2	6,024.1	0.00	0.00	0.00
12,300.0	90.00	181.14	6,458.0	-5,829.0	1,946.2	6,121.0	0.00	0.00	0.00
12,400.0	90.00	181.14	6,458.0	-5,929.0	1,944.2	6,217.8	0.00	0.00	0.00
12,500.0	90.00	181.15	6,458.0	-6,029.0	1,942.2	6,314.6	0.00	0.00	0.00
12,600.0	90.00	181.15	6,458.0	-6,129.0	1,940.2	6,411.4	0.00	0.00	0.00
12,700.0	90.00	181.15	6,458.0	-6,229.0	1,938.2	6,508.2	0.00	0.00	0.00
12,800.0	90.00	181.15	6,458.0	-6,328.9	1,936.2	6,605.0	0.00	0.00	0.00
12,900.0	90.00	181.15	6,458.0	-6,428.9	1,934.2	6,701.8	0.00	0.00	0.00
13,000.0	90.00	181.15	6,458.0	-6,528.9	1,932.2	6,798.7	0.00	0.00	0.00

Survey Report

Company:	Bison Oil & Gas II, LLC	Local Co-ordinate Reference:	Well HUNT FED 8-60 17B-20-5
Project:	WELD COUNTY, COLORADO (NAD 83)	TVD Reference:	GL @ 4938.6ft
Site:	HUNT 8-60 17B	MD Reference:	GL @ 4938.6ft
Well:	HUNT FED 8-60 17B-20-5	North Reference:	True
Wellbore:	Wellbore #1	Survey Calculation Method:	Minimum Curvature
Design:	Design #1	Database:	EDM 5000.16 Single User Db

Planned Survey

Measured Depth (ft)	Inclination (°)	Azimuth (°)	Vertical Depth (ft)	+N/-S (ft)	+E/-W (ft)	Vertical Section (ft)	Dogleg Rate (°/100ft)	Build Rate (°/100ft)	Turn Rate (°/100ft)
13,100.0	90.00	181.16	6,458.0	-6,628.9	1,930.1	6,895.5	0.00	0.00	0.00
13,200.0	90.00	181.16	6,458.0	-6,728.9	1,928.1	6,992.3	0.00	0.00	0.00
13,300.0	90.00	181.16	6,458.0	-6,828.8	1,926.1	7,089.1	0.00	0.00	0.00
13,400.0	90.00	181.16	6,458.0	-6,928.8	1,924.1	7,185.9	0.00	0.00	0.00
13,500.0	90.00	181.16	6,458.0	-7,028.8	1,922.1	7,282.7	0.00	0.00	0.00
13,600.0	90.00	181.16	6,458.0	-7,128.8	1,920.0	7,379.5	0.00	0.00	0.00
13,700.0	90.00	181.17	6,458.0	-7,228.8	1,918.0	7,476.3	0.00	0.00	0.00
13,800.0	90.00	181.17	6,458.0	-7,328.7	1,916.0	7,573.1	0.00	0.00	0.00
13,900.0	90.00	181.17	6,458.0	-7,428.7	1,913.9	7,669.9	0.00	0.00	0.00
14,000.0	90.00	181.17	6,458.0	-7,528.7	1,911.9	7,766.7	0.00	0.00	0.00
14,100.0	90.00	181.17	6,458.0	-7,628.7	1,909.8	7,863.5	0.00	0.00	0.00
14,200.0	90.00	181.17	6,458.0	-7,728.7	1,907.8	7,960.3	0.00	0.00	0.00
14,300.0	90.00	181.17	6,458.0	-7,828.6	1,905.7	8,057.1	0.00	0.00	0.00
14,382.0	90.00	181.17	6,458.0	-7,910.6	1,904.1	8,136.5	0.00	0.00	0.00
Start 99.89 hold at 14382.01 MD									
14,382.2	90.00	181.18	6,458.0	-7,910.8	1,904.1	8,136.7	0.91	0.00	0.91
14,400.0	90.00	181.18	6,458.0	-7,928.6	1,903.7	8,153.9	0.00	0.00	0.00
14,481.9	90.00	181.18	6,458.0	-8,010.5	1,902.0	8,233.2	0.00	0.00	0.00
TD at 14481.9									
14,481.9	90.00	181.18	6,458.0	-8,010.6	1,902.0	8,233.3	0.00	0.00	0.00

Design Targets

Target Name	Dip Angle (°)	Dip Dir. (°)	TVD (ft)	+N/-S (ft)	+E/-W (ft)	Northing (m)	Easting (m)	Latitude	Longitude
- hit/miss target									
- Shape									
HUNT FED 8-60 17B-	0.00	0.00	6,458.0	-8,010.6	1,901.8	450,928.71	1,032,194.83	40° 38' 27.884 N	104° 6' 26.629 W
- plan misses target center by 0.2ft at 14482.0ft MD (6458.0 TVD, -8010.6 N, 1902.0 E)									
- Point									
HUNT FED 8-60 17B-	0.00	0.00	6,458.0	-573.0	2,047.2	453,196.12	1,032,203.70	40° 39' 41.378 N	104° 6' 24.736 W
- plan hits target center									
- Point									
HUNT FED 8-60 17B-	0.00	0.00	6,458.0	-7,910.8	1,904.1	450,959.15	1,032,195.03	40° 38' 28.871 N	104° 6' 26.600 W
- plan hits target center									
- Point									

Survey Report

Company:	Bison Oil & Gas II, LLC	Local Co-ordinate Reference:	Well HUNT FED 8-60 17B-20-5
Project:	WELD COUNTY, COLORADO (NAD 83)	TVD Reference:	GL @ 4938.6ft
Site:	HUNT 8-60 17B	MD Reference:	GL @ 4938.6ft
Well:	HUNT FED 8-60 17B-20-5	North Reference:	True
Wellbore:	Wellbore #1	Survey Calculation Method:	Minimum Curvature
Design:	Design #1	Database:	EDM 5000.16 Single User Db

Formations						
Measured Depth (ft)	Vertical Depth (ft)	Name	Lithology	Dip (°)	Dip Direction (°)	
3,695.7	3,511.0	Parkman				
4,258.5	4,036.0	Sussex				
5,435.4	5,134.0	Shannon				
6,532.0	6,163.0	Sharon Springs Shale				
6,606.6	6,233.0	Niobrara Formation				
6,617.6	6,243.0	Niobrara A Chalk				
6,640.3	6,263.0	Niobrara A Landing Point				
6,754.7	6,353.0	Niobrara B Chalk				
6,801.2	6,383.0	Niobrara B Landing Point				
6,879.4	6,423.0	Niobrara C Chalk				
7,043.0	6,458.0	Niobrara C Landing Point				

Plan Annotations					
Measured Depth (ft)	Vertical Depth (ft)	Local Coordinates			
		+N/-S (ft)	+E/-W (ft)	Comment	
800	800	0	0	Start Build 10.00	
1011	1006	-4	38	Start 5352.61 hold at 1011.00 MD	
6364	6000	-205	1955	Start DLS 15.55 TFO -151.87	
6436	6070	-204	1975	Start DLS 15.55 TFO 110.36	
7043	6458	-573	2047	Start 7339.04 hold at 7042.96 MD	
14,382	6458	-7911	1912	Start 99.89 hold at 14382.01 MD	
14,482	6458	-8011	1910	TD at 14481.9	