

Location:	COLORADO	Slot:	SLOT#15 MULE DEER Y-U-32HNB (351'FNL & 2131'FEL,SEC.05)
Field:	WELD COUNTY (NAD83/TRUE)	Well:	MULE DEER Y-U-32HNB
Facility:	SEC.05-T05N-R61W	Wellbore:	MULE DEER Y-U-32HNB PWB
<b>Plot reference wellpath is MULE DEER Y-U-32HNB (REV-A.1) PWP</b>		Grid System: NAD83 / Lambert Colorado SP, Northern Zone (501), US feet	
True vertical depths are referenced to RIG (17) (RKB)		North Reference: True north	
Reference wellpath measured depths are referenced to RIG (17) (RKB)		Scale: True distance	
RIG (17) (RKB) to Mean Sea Level: 4676 feet		Coordinates are in feet referenced to Slot	
Mean Sea Level to Ground level (At Slot: SLOT#15 MULE DEER Y-U-32HNB (351'FNL & 2131'FEL,SEC.05)): 0 feet		Depths are in feet	
Offset wellpath MDs are referenced to each path's default MD datum			
Created by: rnbalef1 on 2020-03-12; Database: WellArchitectDB2			

Location Information						
Facility Name			Grid East (US ft)	Grid North (US ft)	Latitude	Longitude
SEC 05-T05N-R61W			3352971.931	1404526.872	40°26'12.8400"N	104°13'54.8760"W
Spot	Local N (ft)	Local E (ft)	Grid East (US ft)	Grid North (US ft)	Latitude	Longitude
SLOT#15 MULE DEER Y-U-32HNB (351FNL & 2131FEL, SEC 05)	-152.28	160.34	3353134.428	1404376.904	40°26'11.3352"N	104°13'52.8024"W
RG (17) (RK8) to Ground level (At Slot: SLOT#15 MULE DEER Y-U-32HNB (351FNL & 2131FEL, SEC 05))					4676ft	
Mean Sea Level to Ground level (At Slot: SLOT#15 MULE DEER Y-U-32HNB (351FNL & 2131FEL, SEC 05))					0ft	
RG (17) (RK8) to Mean Sea Level					4676ft	

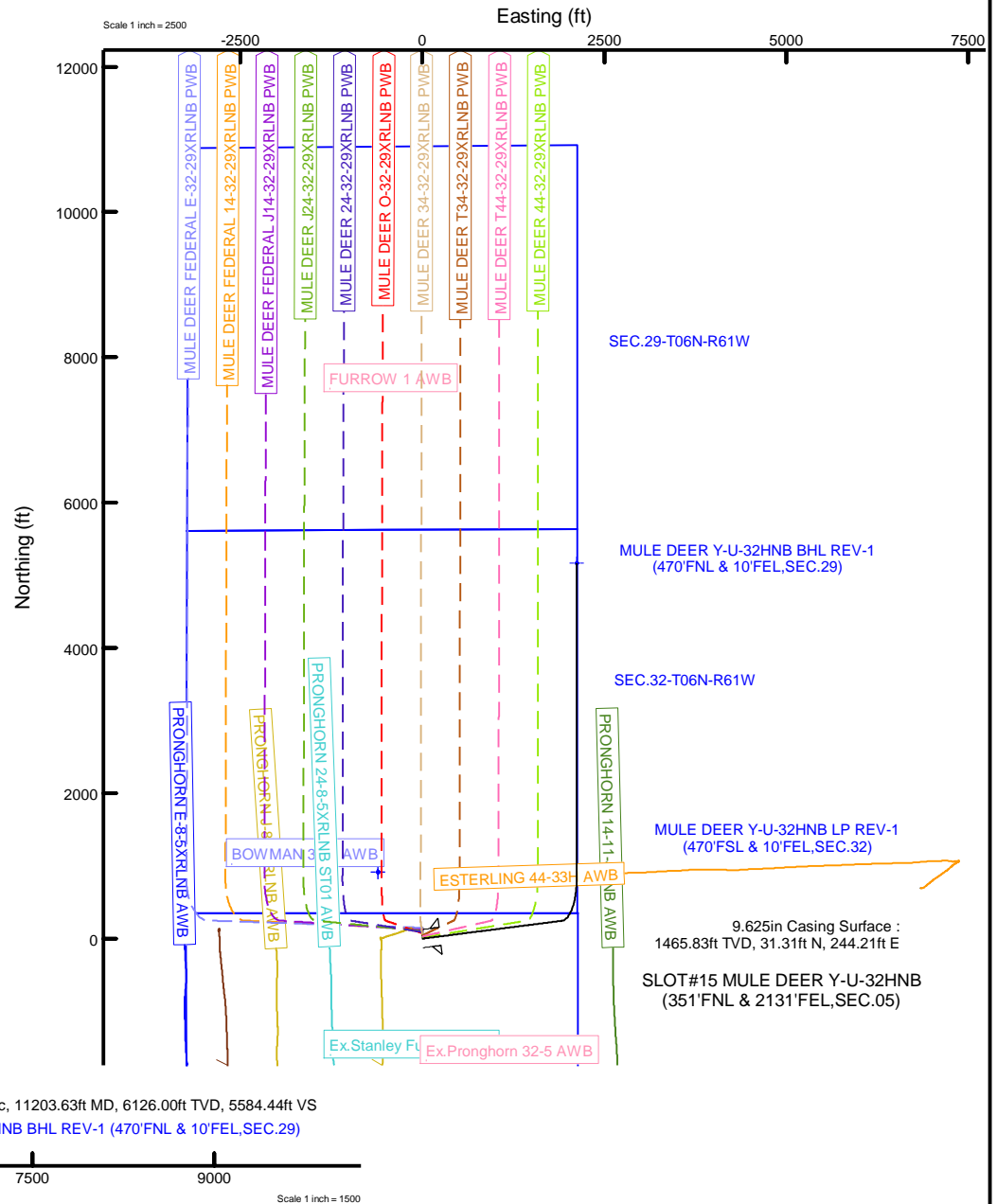
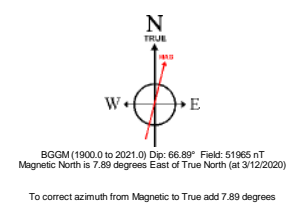
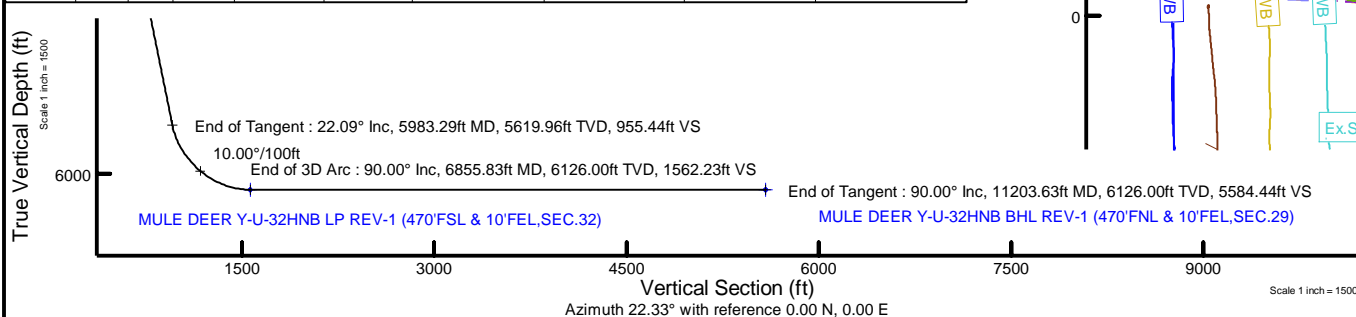
Start MD (ft)	End MD (ft)	Tool	Model	Log Name/Comment	Wellbore
17.00	1500.00	BH NavTrak (superseded model)	BH NavTrak (Rotating+Axial Corr)		MULE DEER Y-U-32HNB PWB
1500.00	11203.63	BH AutoTrak Curve (superseded model)	BH AutoTrak Curve (Short)		MULE DEER Y-U-32HNB PWB

Name	MD (ft)	TYD (ft)	Local N (ft)	Local E (ft)	Grid East (US ft)	Grid North (US ft)	Latitude	Longitude
SEC 29-T06N-R61W	N/A	-2.00	916.26	-607.84	3352513.47	1405284.33	40°26'20.3892"N	104°14'06.6648"W
SEC 32-T06N-R61W	N/A	-2.00	916.26	-607.84	3352513.47	1405284.33	40°26'20.3892"N	104°14'06.6648"W
SEC 05-T09N-R61W	N/A	0.00	-9780.74	-1941.14	3351333.48	1394569.78	40°24'34.8850"N	104°14'17.8960"W
MULE DEER Y-U-32NHN BHL REV-1 (470FNL & 10FEL SEC 29)	11209.63	6126.00	5165.75	2121.55	3350581.78	1409572.27	40°27'2.8600"N	104°15'25.3600"W
MULE DEER Y-U-32NHN LP REV-1 (470FSL & 10FEL SEC 32)	6855.83	6126.00	817.96	2120.53	3355624.26	1405225.08	40°26'19.4170"N	104°15'23.7600"W

Name	Start MD (ft)	End MD (ft)	Interval (ft)	Start TVD (ft)	End TVD (ft)	Start Local N (ft)	Start Local E (ft)	End Local N (ft)	End Local E (ft)	Wellbore
13.5in Open Hole	17.00	1500.00	1483.00	17.00	1465.83	0.00	0.00	31.31	244.21	MULE DEER Y-U-32#NB PWB
9.625in Casing Surface	17.00	1500.00	1483.00	17.00	1465.83	0.00	0.00	31.31	244.21	MULE DEER Y-U-32#NB PWB
8.5in Open Hole	1500.00	11203.63	9703.63	1465.83	6126.00	31.31	244.21	5165.75	2121.55	MULE DEER Y-U-32#NB PWB

Design Comment	MD (ft)	Inc (°)	Az (°)	TVD (ft)	Local N (ft)	Local E (ft)	DLS (°/100ft)	VS (ft)
Tie On	17.00	0.000	82.695	17.00	0.00	0.00	0.00	0.00
End of Tangent	300.00	0.000	82.695	300.00	0.00	0.00	0.00	0.00
End of Build	1404.60	22.092	82.695	1377.44	26.74	208.62	2.00	104.00
End of Tangent	5983.29	22.092	82.695	5619.96	245.70	1916.67	0.00	955.44
End of 3D Arc	6855.83	90.000	0.013	6126.00	817.96	2120.53	10.00	1562.23
End of Tangent	11203.63	90.000	0.013	6126.00	5165.75	2121.55	0.00	5584.44

MD (ft)	Inc (°)	Az (°)	TVD (ft)	Local N (ft)	Local E (ft)	Grid East (US ft)	Grid North (US ft)	Latitude	Longitude
11203.63	90.000	0.013	6126.00	5165.75	2121.55	3355181.78	1409572.27	40°27'2.3800"N	104°13'25.3600"W





# Planned Wellpath Report

MULE DEER Y-U-32HNB (REV-A.1) PWP

Page 1 of 8



REFERENCE WELLPATH IDENTIFICATION			
Operator	BONANZA CREEK ENERGY	Well	MULE DEER Y-U-32HNB
Field	WELD COUNTY (NAD83/TRUE)	API/Legal	
Facility	SEC.05-T05N-R61W	Wellbore	MULE DEER Y-U-32HNB PWB
Slot	SLOT#15 MULE DEER Y-U-32HNB (351'FNL & 2131'FEL,SEC.05)		

REPORT SETUP INFORMATION			
Projection System	NAD83 / Lambert Colorado SP, Northern Zone (501), US feet	Software System	WellArchitect® 6.0
North Reference	True	User	Robiale01
Scale	0.999962	Report Generated	3/12/2020 at 11:50:04 AM
Convergence at slot	0.82° East	Database	WellArchitectDB2

WELLPATH LOCATION						
	Local coordinates		Grid coordinates		Geographic coordinates	
	North[ft]	East[ft]	Easting[US ft]	Northing[US ft]	Latitude	Longitude
Slot Location	-152.28	160.34	3353134.43	1404376.90	40°26'11.3352"N	104°13'52.8024"W
Facility Reference Pt			3352971.93	1404526.87	40°26'12.8400"N	104°13'54.8760"W
Field Reference Pt			3224525.77	1254425.87	40°01'44.4000"N	104°41'53.5560"W

WELLPATH DATUM			
Calculation method	Minimum curvature	RIG (17") (RKB) to Facility Vertical Datum	4676.00ft
Horizontal Reference Pt	Slot	RIG (17") (RKB) to Mean Sea Level	4676.00ft
Vertical Reference Pt	RIG (17") (RKB)	RIG (17") (RKB) to Ground Level at Slot (SLOT#15 MULE DEER Y-U-32HNB (351'FNL & 2131'FEL,SEC.05))	4676.00ft
MD Reference Pt	RIG (17") (RKB)	Section Origin	N 0.00, E 0.00 ft
Field Vertical Reference	Mean Sea Level	Section Azimuth	22.33°



Planned Wellpath Report  
MULE DEER Y-U-32HNB (REV-A.1) PWP  
Page 2 of 8



REFERENCE WELLPATH IDENTIFICATION			
Operator	BONANZA CREEK ENERGY	Well	MULE DEER Y-U-32HNB
Field	WELD COUNTY (NAD83/TRUE)	API/Legal	
Facility	SEC.05-T05N-R61W	Wellbore	MULE DEER Y-U-32HNB PWB
Slot	SLOT#15 MULE DEER Y-U-32HNB (351'FNL & 2131'FEL,SEC.05)		

WELLPATH DATA (118 stations) † = interpolated, ‡ = extrapolated station										
MD [ft]	Inclination [°]	Azimuth [°]	TVD [ft]	Vert Sect [ft]	North [ft]	East [ft]	Latitude	Longitude	DLS [°/100ft]	Comments
0.00†	0.000	82.695	0.00	0.00	0.00	0.00	40°26'11.3352"N	104°13'52.8024"W	0.00	
17.00	0.000	82.695	17.00	0.00	0.00	0.00	40°26'11.3352"N	104°13'52.8024"W	0.00	Tie On
117.00†	0.000	82.695	117.00	0.00	0.00	0.00	40°26'11.3352"N	104°13'52.8024"W	0.00	
217.00†	0.000	82.695	217.00	0.00	0.00	0.00	40°26'11.3352"N	104°13'52.8024"W	0.00	
300.00	0.000	82.695	300.00	0.00	0.00	0.00	40°26'11.3352"N	104°13'52.8024"W	0.00	End of Tangent
317.00†	0.340	82.695	317.00	0.02	0.01	0.05	40°26'11.3353"N	104°13'52.8018"W	2.00	
417.00†	2.340	82.695	416.97	1.18	0.30	2.37	40°26'11.3382"N	104°13'52.7718"W	2.00	
517.00†	4.340	82.695	516.79	4.06	1.04	8.15	40°26'11.3455"N	104°13'52.6970"W	2.00	
617.00†	6.340	82.695	616.35	8.66	2.23	17.38	40°26'11.3572"N	104°13'52.5777"W	2.00	
717.00†	8.340	82.695	715.53	14.98	3.85	30.05	40°26'11.3733"N	104°13'52.4138"W	2.00	
817.00†	10.340	82.695	814.20	23.00	5.92	46.15	40°26'11.3937"N	104°13'52.2056"W	2.00	
917.00†	12.340	82.695	912.24	32.73	8.42	65.65	40°26'11.4184"N	104°13'51.9534"W	2.00	
1017.00†	14.340	82.695	1009.54	44.13	11.35	88.53	40°26'11.4473"N	104°13'51.6575"W	2.00	
1117.00†	16.340	82.695	1105.97	57.21	14.71	114.77	40°26'11.4806"N	104°13'51.3181"W	2.00	
1217.00†	18.340	82.695	1201.42	71.95	18.50	144.33	40°26'11.5180"N	104°13'50.9358"W	2.00	
1317.00†	20.340	82.695	1295.77	88.32	22.71	177.18	40°26'11.5596"N	104°13'50.5110"W	2.00	
1404.60	22.092	82.695	1377.44	104.00	26.74	208.62	40°26'11.5995"N	104°13'50.1044"W	2.00	End of Build
1417.00†	22.092	82.695	1388.92	106.30	27.34	213.25	40°26'11.6053"N	104°13'50.0446"W	0.00	
1517.00†	22.092	82.695	1481.58	124.90	32.12	250.55	40°26'11.6526"N	104°13'49.5622"W	0.00	
1617.00†	22.092	82.695	1574.24	143.49	36.90	287.86	40°26'11.6998"N	104°13'49.0797"W	0.00	
1717.00†	22.092	82.695	1666.90	162.09	41.68	325.16	40°26'11.7471"N	104°13'48.5973"W	0.00	
1817.00†	22.092	82.695	1759.55	180.68	46.47	362.47	40°26'11.7943"N	104°13'48.1149"W	0.00	
1917.00†	22.092	82.695	1852.21	199.28	51.25	399.77	40°26'11.8416"N	104°13'47.6324"W	0.00	
2017.00†	22.092	82.695	1944.87	217.88	56.03	437.07	40°26'11.8888"N	104°13'47.1500"W	0.00	
2117.00†	22.092	82.695	2037.53	236.47	60.81	474.38	40°26'11.9361"N	104°13'46.6676"W	0.00	
2217.00†	22.092	82.695	2130.19	255.07	65.59	511.68	40°26'11.9833"N	104°13'46.1851"W	0.00	
2317.00†	22.092	82.695	2222.84	273.66	70.38	548.99	40°26'12.0306"N	104°13'45.7027"W	0.00	
2417.00†	22.092	82.695	2315.50	292.26	75.16	586.29	40°26'12.0778"N	104°13'45.2202"W	0.00	
2517.00†	22.092	82.695	2408.16	310.85	79.94	623.60	40°26'12.1251"N	104°13'44.7378"W	0.00	
2617.00†	22.092	82.695	2500.82	329.45	84.72	660.90	40°26'12.1723"N	104°13'44.2554"W	0.00	



Planned Wellpath Report  
MULE DEER Y-U-32HNB (REV-A.1) PWP  
Page 3 of 8



REFERENCE WELLPATH IDENTIFICATION			
Operator	BONANZA CREEK ENERGY	Well	MULE DEER Y-U-32HNB
Field	WELD COUNTY (NAD83/TRUE)	API/Legal	
Facility	SEC.05-T05N-R61W	Wellbore	MULE DEER Y-U-32HNB PWB
Slot	SLOT#15 MULE DEER Y-U-32HNB (351'FNL & 2131'FEL,SEC.05)		

WELLPATH DATA (118 stations) † = interpolated, ‡ = extrapolated station										
MD [ft]	Inclination [°]	Azimuth [°]	TVD [ft]	Vert Sect [ft]	North [ft]	East [ft]	Latitude	Longitude	DLS [°/100ft]	Comments
2717.00†	22.092	82.695	2593.48	348.05	89.51	698.20	40°26'12.2196"N	104°13'43.7729"W	0.00	
2817.00†	22.092	82.695	2686.14	366.64	94.29	735.51	40°26'12.2668"N	104°13'43.2905"W	0.00	
2917.00†	22.092	82.695	2778.79	385.24	99.07	772.81	40°26'12.3140"N	104°13'42.8081"W	0.00	
3017.00†	22.092	82.695	2871.45	403.83	103.85	810.12	40°26'12.3613"N	104°13'42.3256"W	0.00	
3117.00†	22.092	82.695	2964.11	422.43	108.63	847.42	40°26'12.4085"N	104°13'41.8432"W	0.00	
3217.00†	22.092	82.695	3056.77	441.02	113.42	884.73	40°26'12.4558"N	104°13'41.3608"W	0.00	
3317.00†	22.092	82.695	3149.43	459.62	118.20	922.03	40°26'12.5030"N	104°13'40.8783"W	0.00	
3417.00†	22.092	82.695	3242.08	478.22	122.98	959.33	40°26'12.5503"N	104°13'40.3959"W	0.00	
3517.00†	22.092	82.695	3334.74	496.81	127.76	996.64	40°26'12.5975"N	104°13'39.9134"W	0.00	
3617.00†	22.092	82.695	3427.40	515.41	132.54	1033.94	40°26'12.6447"N	104°13'39.4310"W	0.00	
3717.00†	22.092	82.695	3520.06	534.00	137.33	1071.25	40°26'12.6920"N	104°13'38.9486"W	0.00	
3817.00†	22.092	82.695	3612.72	552.60	142.11	1108.55	40°26'12.7392"N	104°13'38.4661"W	0.00	
3917.00†	22.092	82.695	3705.37	571.19	146.89	1145.86	40°26'12.7865"N	104°13'37.9837"W	0.00	
4017.00†	22.092	82.695	3798.03	589.79	151.67	1183.16	40°26'12.8337"N	104°13'37.5013"W	0.00	
4117.00†	22.092	82.695	3890.69	608.38	156.46	1220.47	40°26'12.8809"N	104°13'37.0188"W	0.00	
4217.00†	22.092	82.695	3983.35	626.98	161.24	1257.77	40°26'12.9282"N	104°13'36.5364"W	0.00	
4317.00†	22.092	82.695	4076.01	645.58	166.02	1295.07	40°26'12.9754"N	104°13'36.0539"W	0.00	
4417.00†	22.092	82.695	4168.66	664.17	170.80	1332.38	40°26'13.0226"N	104°13'35.5715"W	0.00	
4517.00†	22.092	82.695	4261.32	682.77	175.58	1369.68	40°26'13.0699"N	104°13'35.0891"W	0.00	
4617.00†	22.092	82.695	4353.98	701.36	180.37	1406.99	40°26'13.1171"N	104°13'34.6066"W	0.00	
4717.00†	22.092	82.695	4446.64	719.96	185.15	1444.29	40°26'13.1643"N	104°13'34.1242"W	0.00	
4817.00†	22.092	82.695	4539.30	738.55	189.93	1481.60	40°26'13.2116"N	104°13'33.6417"W	0.00	
4917.00†	22.092	82.695	4631.95	757.15	194.71	1518.90	40°26'13.2588"N	104°13'33.1593"W	0.00	
5017.00†	22.092	82.695	4724.61	775.75	199.49	1556.20	40°26'13.3060"N	104°13'32.6769"W	0.00	
5117.00†	22.092	82.695	4817.27	794.34	204.28	1593.51	40°26'13.3533"N	104°13'32.1944"W	0.00	
5217.00†	22.092	82.695	4909.93	812.94	209.06	1630.81	40°26'13.4005"N	104°13'31.7120"W	0.00	
5317.00†	22.092	82.695	5002.59	831.53	213.84	1668.12	40°26'13.4477"N	104°13'31.2295"W	0.00	
5417.00†	22.092	82.695	5095.24	850.13	218.62	1705.42	40°26'13.4950"N	104°13'30.7471"W	0.00	
5517.00†	22.092	82.695	5187.90	868.72	223.41	1742.73	40°26'13.5422"N	104°13'30.2646"W	0.00	
5617.00†	22.092	82.695	5280.56	887.32	228.19	1780.03	40°26'13.5894"N	104°13'29.7822"W	0.00	



Planned Wellpath Report  
MULE DEER Y-U-32HNB (REV-A.1) PWP  
Page 4 of 8



REFERENCE WELLPATH IDENTIFICATION			
Operator	BONANZA CREEK ENERGY	Well	MULE DEER Y-U-32HNB
Field	WELD COUNTY (NAD83/TRUE)	API/Legal	
Facility	SEC.05-T05N-R61W	Wellbore	MULE DEER Y-U-32HNB PWB
Slot	SLOT#15 MULE DEER Y-U-32HNB (351'FNL & 2131'FEL,SEC.05)		

WELLPATH DATA (118 stations) † = interpolated, ‡ = extrapolated station										
MD [ft]	Inclination [°]	Azimuth [°]	TVD [ft]	Vert Sect [ft]	North [ft]	East [ft]	Latitude	Longitude	DLS [°/100ft]	Comments
5717.00†	22.092	82.695	5373.22	905.92	232.97	1817.33	40°26'13.6367"N	104°13'29.2998"W	0.00	
5817.00†	22.092	82.695	5465.88	924.51	237.75	1854.64	40°26'13.6839"N	104°13'28.8173"W	0.00	
5917.00†	22.092	82.695	5558.54	943.11	242.53	1891.94	40°26'13.7311"N	104°13'28.3349"W	0.00	
5983.29	22.092	82.695	5619.96	955.44	245.70	1916.67	40°26'13.7624"N	104°13'28.0151"W	0.00	End of Tangent
6017.00†	22.726	74.003	5651.13	962.61	248.31	1929.22	40°26'13.7881"N	104°13'27.8528"W	10.00	
6117.00†	26.977	52.284	5742.04	994.32	267.55	1965.83	40°26'13.9783"N	104°13'27.3794"W	10.00	
6217.00†	33.599	37.312	5828.47	1040.82	303.53	2000.63	40°26'14.3337"N	104°13'26.9292"W	10.00	
6317.00†	41.464	27.118	5907.78	1100.69	355.13	2032.57	40°26'14.8436"N	104°13'26.5161"W	10.00	
6417.00†	49.981	19.771	5977.58	1172.12	420.80	2060.69	40°26'15.4925"N	104°13'26.1524"W	10.00	
6517.00†	58.858	14.093	6035.74	1252.93	498.54	2084.12	40°26'16.2607"N	104°13'25.8493"W	10.00	
6617.00†	67.940	9.403	6080.49	1340.67	585.98	2102.16	40°26'17.1248"N	104°13'25.6159"W	10.00	
6717.00†	77.139	5.287	6110.47	1432.67	680.48	2114.25	40°26'18.0585"N	104°13'25.4594"W	10.00	
6817.00†	86.398	1.466	6124.78	1526.15	779.15	2120.03	40°26'19.0336"N	104°13'25.3845"W	10.00	
6855.83	90.000	0.013	6126.00†	1562.23	817.96	2120.53	40°26'19.4170"N	104°13'25.3780"W	10.00	End of 3D Arc
6917.00†	90.000	0.013	6126.00	1618.82	879.12	2120.55	40°26'20.0214"N	104°13'25.3777"W	0.00	
7017.00†	90.000	0.013	6126.00	1711.33	979.12	2120.57	40°26'21.0096"N	104°13'25.3773"W	0.00	
7117.00†	90.000	0.013	6126.00	1803.84	1079.12	2120.59	40°26'21.9977"N	104°13'25.3769"W	0.00	
7217.00†	90.000	0.013	6126.00	1896.35	1179.12	2120.62	40°26'22.9859"N	104°13'25.3765"W	0.00	
7317.00†	90.000	0.013	6126.00	1988.86	1279.12	2120.64	40°26'23.9740"N	104°13'25.3761"W	0.00	
7417.00†	90.000	0.013	6126.00	2081.37	1379.12	2120.66	40°26'24.9622"N	104°13'25.3757"W	0.00	
7517.00†	90.000	0.013	6126.00	2173.89	1479.12	2120.69	40°26'25.9504"N	104°13'25.3753"W	0.00	
7617.00†	90.000	0.013	6126.00	2266.40	1579.12	2120.71	40°26'26.9385"N	104°13'25.3748"W	0.00	
7717.00†	90.000	0.013	6126.00	2358.91	1679.12	2120.74	40°26'27.9267"N	104°13'25.3744"W	0.00	
7817.00†	90.000	0.013	6126.00	2451.42	1779.12	2120.76	40°26'28.9148"N	104°13'25.3740"W	0.00	
7917.00†	90.000	0.013	6126.00	2543.93	1879.12	2120.78	40°26'29.9030"N	104°13'25.3736"W	0.00	
8017.00†	90.000	0.013	6126.00	2636.44	1979.12	2120.81	40°26'30.8911"N	104°13'25.3732"W	0.00	
8117.00†	90.000	0.013	6126.00	2728.95	2079.12	2120.83	40°26'31.8793"N	104°13'25.3728"W	0.00	
8217.00†	90.000	0.013	6126.00	2821.47	2179.12	2120.85	40°26'32.8675"N	104°13'25.3724"W	0.00	
8317.00†	90.000	0.013	6126.00	2913.98	2279.12	2120.88	40°26'33.8556"N	104°13'25.3720"W	0.00	
8417.00†	90.000	0.013	6126.00	3006.49	2379.12	2120.90	40°26'34.8438"N	104°13'25.3715"W	0.00	



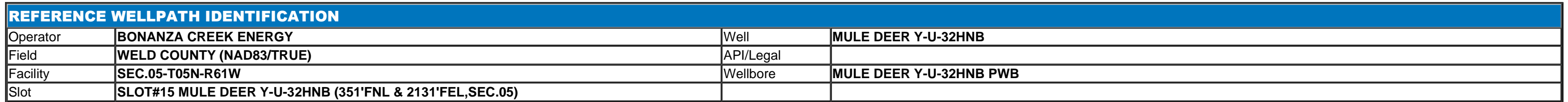
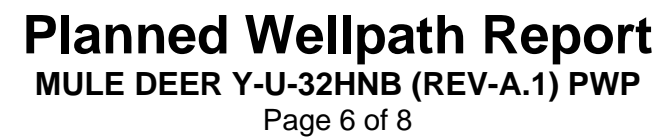
Planned Wellpath Report  
MULE DEER Y-U-32HNB (REV-A.1) PWP  
Page 5 of 8



REFERENCE WELLPATH IDENTIFICATION			
Operator	BONANZA CREEK ENERGY	Well	MULE DEER Y-U-32HNB
Field	WELD COUNTY (NAD83/TRUE)	API/Legal	
Facility	SEC.05-T05N-R61W	Wellbore	MULE DEER Y-U-32HNB PWB
Slot	SLOT#15 MULE DEER Y-U-32HNB (351'FNL & 2131'FEL,SEC.05)		

WELLPATH DATA (118 stations) † = interpolated, ‡ = extrapolated station										
MD [ft]	Inclination [°]	Azimuth [°]	TVD [ft]	Vert Sect [ft]	North [ft]	East [ft]	Latitude	Longitude	DLS [°/100ft]	Comments
8517.00†	90.000	0.013	6126.00	3099.00	2479.12	2120.92	40°26'35.8319"N	104°13'25.3711"W	0.00	
8617.00†	90.000	0.013	6126.00	3191.51	2579.12	2120.95	40°26'36.8201"N	104°13'25.3707"W	0.00	
8717.00†	90.000	0.013	6126.00	3284.02	2679.12	2120.97	40°26'37.8082"N	104°13'25.3703"W	0.00	
8817.00†	90.000	0.013	6126.00	3376.53	2779.12	2120.99	40°26'38.7964"N	104°13'25.3699"W	0.00	
8917.00†	90.000	0.013	6126.00	3469.05	2879.12	2121.02	40°26'39.7845"N	104°13'25.3695"W	0.00	
9017.00†	90.000	0.013	6126.00	3561.56	2979.12	2121.04	40°26'40.7727"N	104°13'25.3691"W	0.00	
9117.00†	90.000	0.013	6126.00	3654.07	3079.12	2121.06	40°26'41.7609"N	104°13'25.3686"W	0.00	
9217.00†	90.000	0.013	6126.00	3746.58	3179.12	2121.09	40°26'42.7490"N	104°13'25.3682"W	0.00	
9317.00†	90.000	0.013	6126.00	3839.09	3279.12	2121.11	40°26'43.7372"N	104°13'25.3678"W	0.00	
9417.00†	90.000	0.013	6126.00	3931.60	3379.12	2121.13	40°26'44.7253"N	104°13'25.3674"W	0.00	
9517.00†	90.000	0.013	6126.00	4024.12	3479.12	2121.16	40°26'45.7135"N	104°13'25.3670"W	0.00	
9617.00†	90.000	0.013	6126.00	4116.63	3579.12	2121.18	40°26'46.7016"N	104°13'25.3666"W	0.00	
9717.00†	90.000	0.013	6126.00	4209.14	3679.12	2121.20	40°26'47.6898"N	104°13'25.3662"W	0.00	
9817.00†	90.000	0.013	6126.00	4301.65	3779.12	2121.23	40°26'48.6779"N	104°13'25.3657"W	0.00	
9917.00†	90.000	0.013	6126.00	4394.16	3879.12	2121.25	40°26'49.6661"N	104°13'25.3653"W	0.00	
10017.00†	90.000	0.013	6126.00	4486.67	3979.12	2121.27	40°26'50.6543"N	104°13'25.3649"W	0.00	
10117.00†	90.000	0.013	6126.00	4579.18	4079.12	2121.30	40°26'51.6424"N	104°13'25.3645"W	0.00	
10217.00†	90.000	0.013	6126.00	4671.70	4179.12	2121.32	40°26'52.6306"N	104°13'25.3641"W	0.00	
10317.00†	90.000	0.013	6126.00	4764.21	4279.12	2121.34	40°26'53.6187"N	104°13'25.3637"W	0.00	
10417.00†	90.000	0.013	6126.00	4856.72	4379.12	2121.37	40°26'54.6069"N	104°13'25.3633"W	0.00	
10517.00†	90.000	0.013	6126.00	4949.23	4479.12	2121.39	40°26'55.5950"N	104°13'25.3628"W	0.00	
10617.00†	90.000	0.013	6126.00	5041.74	4579.12	2121.41	40°26'56.5832"N	104°13'25.3624"W	0.00	
10717.00†	90.000	0.013	6126.00	5134.25	4679.12	2121.44	40°26'57.5713"N	104°13'25.3620"W	0.00	
10817.00†	90.000	0.013	6126.00	5226.76	4779.12	2121.46	40°26'58.5595"N	104°13'25.3616"W	0.00	
10917.00†	90.000	0.013	6126.00	5319.28	4879.12	2121.48	40°26'59.5476"N	104°13'25.3612"W	0.00	
11017.00†	90.000	0.013	6126.00	5411.79	4979.12	2121.51	40°27'0.5358"N	104°13'25.3608"W	0.00	
11117.00†	90.000	0.013	6126.00	5504.30	5079.12	2121.53	40°27'1.5240"N	104°13'25.3604"W	0.00	
11203.63	90.000	0.013	6126.00 <sup>2</sup>	5584.44	5165.75	2121.55	40°27'2.3800"N	104°13'25.3600"W	0.00	End of Tangent





HOLE & CASING SECTIONS - Ref Wellbore: MULE DEER Y-U-32HNB PWB      Ref Wellpath: MULE DEER Y-U-32HNB (REV-A.1) PWP									
String/Diameter	Start MD [ft]	End MD [ft]	Interval [ft]	Start TVD [ft]	End TVD [ft]	Start N/S [ft]	Start E/W [ft]	End N/S [ft]	End E/W [ft]
13.5in Open Hole	17.00	1500.00	1483.00	17.00	1465.83	0.00	0.00	31.31	244.21
9.625in Casing Surface	17.00	1500.00	1483.00	17.00	1465.83	0.00	0.00	31.31	244.21
8.5in Open Hole	1500.00	11203.63	9703.63	1465.83	6126.00	31.31	244.21	5165.75	2121.55

TARGETS									
Name	MD [ft]	TVD [ft]	North [ft]	East [ft]	Grid East [US ft]	Grid North [US ft]	Latitude	Longitude	Shape
SEC.29-T06N-R61W	N/A	-2.00	916.26	-607.94	3352513.47	1405284.33	40°26'20.3892"N	104°14'0.6648"W	polygon
	2D Polygon: dimensions not calculated								
SEC.32-T06N-R61W	N/A	-2.00	916.26	-607.94	3352513.47	1405284.33	40°26'20.3892"N	104°14'0.6648"W	polygon
	2D Polygon: dimensions not calculated								
SEC.05-T05N-R61W	N/A	0.00	-9780.74	-1941.14	3351333.48	1394569.78	40°24'34.6850"N	104°14'17.8960"W	polygon
	2D Polygon: dimensions not calculated								
2) MULE DEER Y-U-32HNB BHL REV-1 (470'FNL & 10'FEL,SEC.29)	11203.63	6126.00	5165.75	2121.55	3355181.78	1409572.27	40°27'2.3800"N	104°13'25.3600"W	point
1) MULE DEER Y-U-32HNB LP REV-1 (470'FSL & 10'FEL,SEC.32)	6855.83	6126.00	817.96	2120.53	3355242.96	1405225.08	40°26'19.4170"N	104°13'25.3780"W	point



Planned Wellpath Report  
MULE DEER Y-U-32HNB (REV-A.1) PWP  
Page 7 of 8



REFERENCE WELLPATH IDENTIFICATION			
Operator	BONANZA CREEK ENERGY	Well	MULE DEER Y-U-32HNB
Field	WELD COUNTY (NAD83/TRUE)	API/Legal	
Facility	SEC.05-T05N-R61W	Wellbore	MULE DEER Y-U-32HNB PWB
Slot	SLOT#15 MULE DEER Y-U-32HNB (351'FNL & 2131'FEL,SEC.05)		

SURVEY PROGRAM - Ref Wellbore: MULE DEER Y-U-32HNB PWB    Ref Wellpath: MULE DEER Y-U-32HNB (REV-A.1) PWP				
Start MD [ft]	End MD [ft]	Positional Uncertainty Model	Log Name/Comment	Wellbore
17.00	1500.00	BHI NaviTrak (Rotating+Axial Corr)		MULE DEER Y-U-32HNB PWB
1500.00	11203.63	BH AutoTrak Curve (Short)		MULE DEER Y-U-32HNB PWB





Planned Wellpath Report  
MULE DEER Y-U-32HNB (REV-A.1) PWP  
Page 8 of 8



REFERENCE WELLPATH IDENTIFICATION			
Operator	BONANZA CREEK ENERGY	Well	MULE DEER Y-U-32HNB
Field	WELD COUNTY (NAD83/TRUE)	API/Legal	
Facility	SEC.05-T05N-R61W	Wellbore	MULE DEER Y-U-32HNB PWB
Slot	SLOT#15 MULE DEER Y-U-32HNB (351'FNL & 2131'FEL,SEC.05)		

DESIGN COMMENTS				
MD [ft]	Inclination [°]	Azimuth [°]	TVD [ft]	Comment
17.00	0.000	82.695	17.00	Tie On
300.00	0.000	82.695	300.00	End of Tangent
1404.60	22.092	82.695	1377.44	End of Build
5983.29	22.092	82.695	5619.96	End of Tangent
6855.83	90.000	0.013	6126.00	End of 3D Arc
11203.63	90.000	0.013	6126.00	End of Tangent