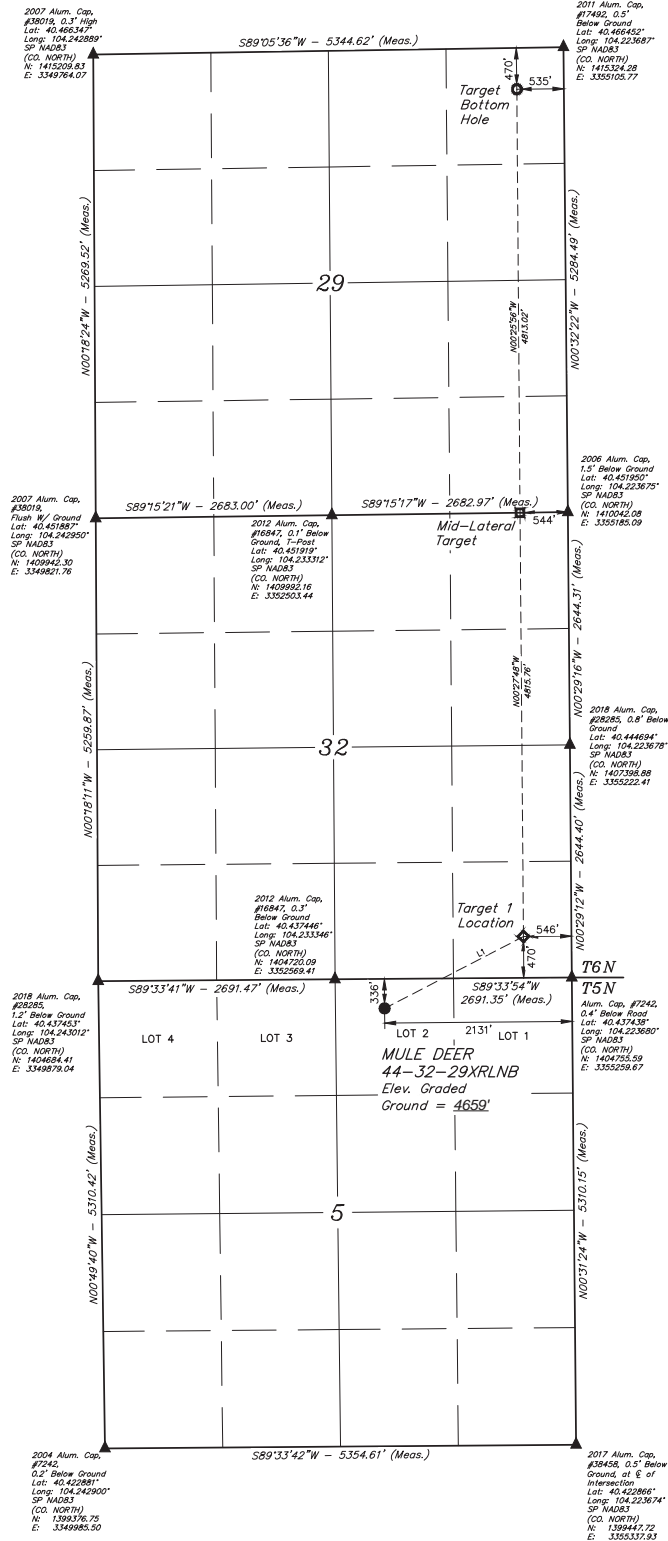


T5N, R61W, 6th P.M.

- LEGEND:**
- PROPOSED WELLHEAD
 - TARGET BOTTOM HOLE
 - TARGET 1 LOCATION
 - MID-LATERAL TARGET
 - ▲ SECTION CORNERS LOCATED (NAD 83)

NOTE:
Distances referenced on plat to section lines are perpendicular.



LINE TABLE		
LINE	DIRECTION	LENGTH
L1	N62°36'57"E	1777.46'

PDOP = 1.5



NAD 83 (SURFACE LOCATION)	NAD 83 (TARGET 1 LOCATION)	NAD 83 (MID-LATERAL TARGET)	NAD 83 (TARGET BOTTOM HOLE)
LATITUDE = 40°29'11.89" (40.486324°)	LATITUDE = 40°29'15.43" (40.4879°)	LATITUDE = 40°27'07.06" (40.451044°)	LATITUDE = 40°27'54.55" (40.466135°)
LONGITUDE = 104°13'52.80" (104.231334°)	LONGITUDE = 104°13'52.31" (104.225641°)	LONGITUDE = 104°13'52.26" (104.225629°)	LONGITUDE = 104°13'52.19" (104.225608°)
STATE PLANE NAD 83 (CO. NORTH)	STATE PLANE NAD 83 (CO. NORTH)	STATE PLANE NAD 83 (CO. NORTH)	STATE PLANE NAD 83 (CO. NORTH)
N: 1404292.07 E: 3353134.10	N: 1405218.19 E: 3354707.27	N: 1410031.98 E: 3354641.36	N: 1414843.02 E: 3354578.11

BASIS OF BEARINGS
TRANSVERSE MERCATOR PROJECTION WITH
A CENTRAL MERIDIAN OF W105°00'00"

BASIS OF ELEVATION
OPUS SOLUTION GENERATED NAVD 88



UELS, LLC
Corporate Office • 85 South 200 East
Vernal, UT 84078 • (435) 789-1017



REV: 1 06-19-19 T.B.S. (SHL CHANGES)

BONANZA CREEK ENERGY OPERATING COMPANY, LLC			
MULE DEER 44-32-29XRLNB			
LOT 2, SECTION 5, T5N, R61W, 6th P.M.			
WELD COUNTY, COLORADO			
SURVEYED BY	DALLAS NIELSON	02-22-19	SCALE
DRAWN BY	CIVIE	04-11-19	1" = 1000'
WELL LOCATION PLAT			