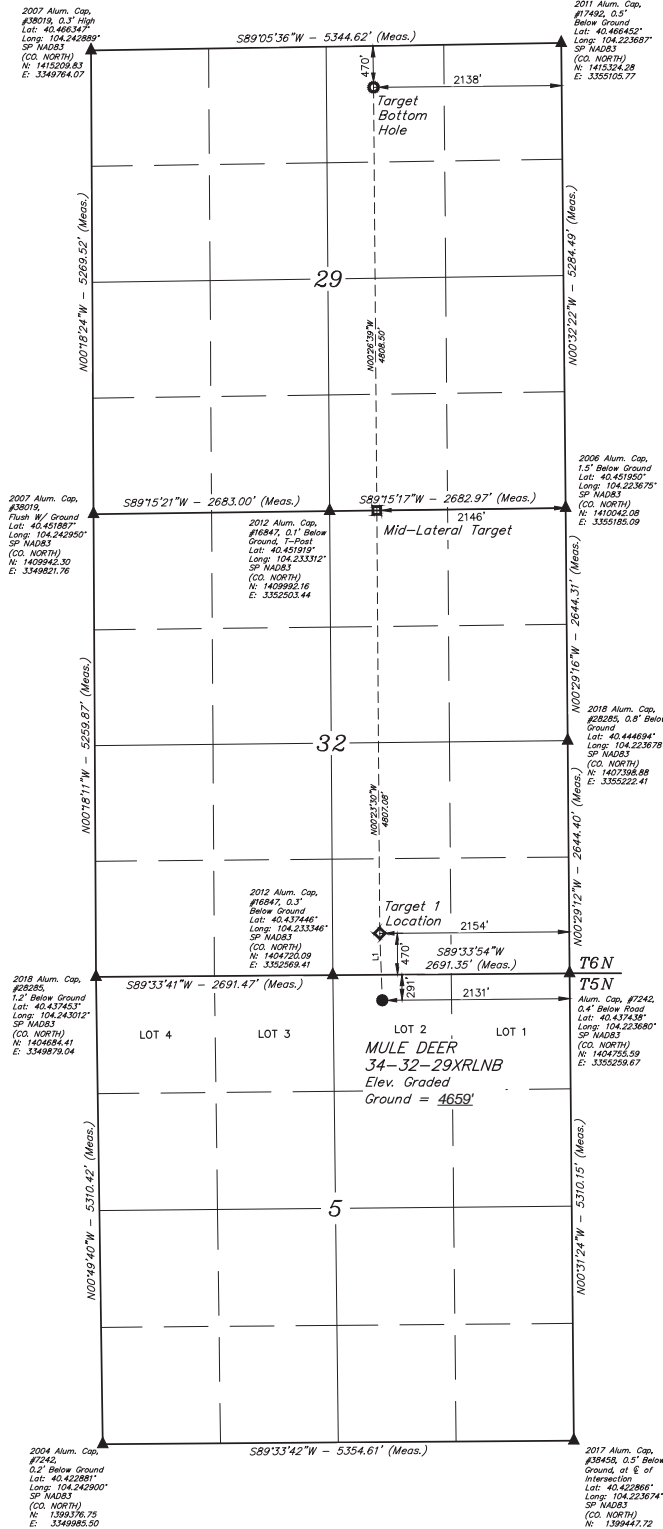


LEGEND:
 = PROPOSED WELLHEAD.
 = TARGET BOTTOM HOLE.
 = TARGET 1 LOCATION.
 = MID-LATERAL TARGET.
 = SECTION CORNERS LOCATED (NAD 83).

NOTE:
 Distances referenced on plat to section lines are perpendicular.

T5N, R61W, 6th P.M.

LINE TABLE		
LINE	DIRECTION	LENGTH
L1	N02°12'38"W	760.91'



PDOP = 1.3



NAD 83 (SURFACE LOCATION)	NAD 83 (TARGET 1 LOCATION)	NAD 83 (MID-LATERAL TARGET)	NAD 83 (TARGET BOTTOM HOLE)
LATITUDE = 40°29'11.95" (40.486677°)	LATITUDE = 40°29'15.44" (40.48734°)	LATITUDE = 40°27'06.95" (40.451025°)	LATITUDE = 40°27'54.15" (40.465139°)
LONGITUDE = 104°13'52.80" (104.23134°)	LONGITUDE = 104°13'53.10" (104.23146°)	LONGITUDE = 104°13'52.98" (104.23138°)	LONGITUDE = 104°13'52.92" (104.23136°)
STATE PLANE NAD 83 (CO. NORTH)	STATE PLANE NAD 83 (CO. NORTH)	STATE PLANE NAD 83 (CO. NORTH)	STATE PLANE NAD 83 (CO. NORTH)
N: 1405196.98 E: 335313.52	N: 1405196.98 E: 335309.92	N: 1410002.15 E: 3353040.15	N: 1414808.69 E: 3352975.40

BASIS OF BEARINGS
 TRANSVERSE MERCATOR PROJECTION WITH
 A CENTRAL MERIDIAN OF W105°00'00".

BASIS OF ELEVATION
 OPUS SOLUTION GENERATED NAVD 88



UKLS, LLC
 Corporate Office • 85 South 200 East
 Vernal, UT 84078 • (435) 789-1017



CERTIFICATE OF SURVEY
 THIS IS TO CERTIFY THAT THE ABOVE IS A TRUE AND CORRECT COPY OF THE ORIGINAL SURVEY MAP AND THAT THE SAME ARE TRUE AND CORRECT IN ALL RESPECTS.
 DALLAS NIELSON
 REGISTERED LAND SURVEYOR
 REG. NO. 28283
 STATE OF COLORADO
 10-19

REV: 1 06-19-19 T.B.S. (SHL CHANGES)

**BONANZA CREEK ENERGY
 OPERATING COMPANY, LLC**
MULE DEER 34-32-29XRLNB
LOT 2, SECTION 5, T5N, R61W, 6th P.M.
WELD COUNTY, COLORADO

SURVEYED BY	DALLAS NIELSON	02-22-19	SCALE
DRAWN BY	CIVIE	04-11-19	1" = 1000'

WELL LOCATION PLAT