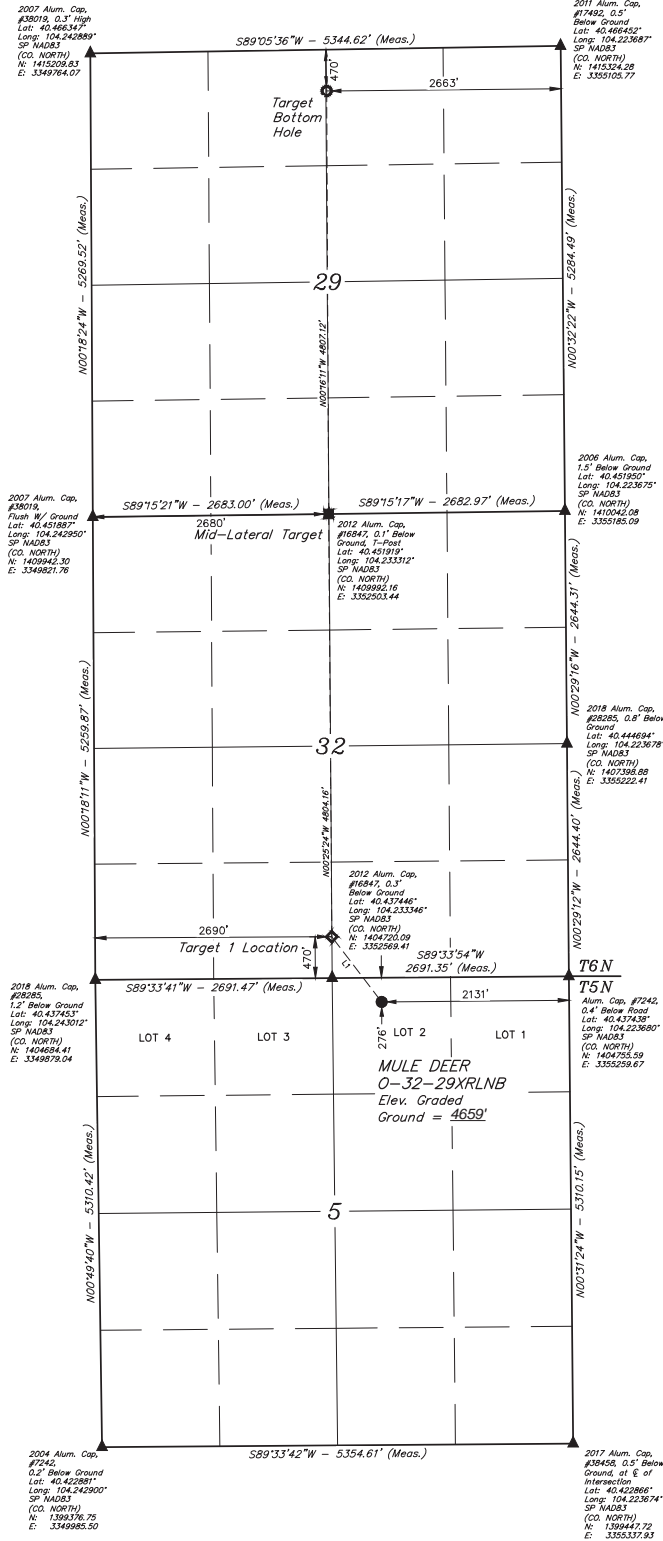


LEGEND:
 = PROPOSED WELLHEAD.
 = TARGET BOTTOM HOLE.
 = TARGET 1 LOCATION.
 = MID-LATERAL TARGET.
 = SECTION CORNERS LOCATED. (NAD 83)

NOTE:
 Distances referenced on plat to section lines are perpendicular.

T5N, R61W, 6th P.M.

LINE TABLE		
LINE	DIRECTION	LENGTH
L1	N37°23'24"W	932.97'



PDOP = 1.3



NAD 83 (SURFACE LOCATION)	NAD 83 (TARGET 1 LOCATION)	NAD 83 (MID-LATERAL TARGET)	NAD 83 (TARGET BOTTOM HOLE)
LATITUDE = 40°29'12.08" (40.486887°)	LATITUDE = 40°29'15.45" (40.487367°)	LATITUDE = 40°27'06.91" (40.451019°)	LATITUDE = 40°27'54.80" (40.465119°)
LONGITUDE = 104°13'52.80" (104.231344°)	LONGITUDE = 104°14'00.04" (104.233345°)	LONGITUDE = 104°13'59.96" (104.233323°)	LONGITUDE = 104°13'59.72" (104.233255°)
STATE PLANE NAD 83 (CO. NORTH)	STATE PLANE NAD 83 (CO. NORTH)	STATE PLANE NAD 83 (CO. NORTH)	STATE PLANE NAD 83 (CO. NORTH)
N: 1404452.05' E: 335313.33'	N: 1405189.89' E: 335252.84'	N: 1409992.11' E: 3352500.45'	N: 1414797.44' E: 3352450.40'

BASIS OF BEARINGS
 TRANSVERSE MERCATOR PROJECTION WITH
 A CENTRAL MERIDIAN OF W105°00'00".

BASIS OF ELEVATION
 OPUS SOLUTION GENERATED NAVD 88



UELS, LLC
 Corporate Office • 85 South 200 East
 Vernal, UT 84078 • (435) 789-1017



CERTIFICATE OF RECORDING
 THIS IS TO CERTIFY THAT THE ABOVE DESCRIBED SURVEY WAS MADE IN ACCORDANCE WITH THE REQUIREMENTS OF THE COLORADO SURVEYING ACT, AND THAT THE SAME ARE TRUE AND CORRECT TO THE BEST OF THE SURVEYOR'S KNOWLEDGE AND BELIEF.
 BONANZA CREEK ENERGY OPERATING COMPANY, LLC
 MULE DEER O-32-29XRLNB
 LOT 2, SECTION 5, T5N, R61W, 6th P.M.
 WELD COUNTY, COLORADO
 SURVEYED BY: DALLAS NIELSON 02-22-19
 DRAWN BY: CIVIL 04-11-19
 SCALE: 1" = 1000'

REV: 1 06-19-19 T.B.S. (SHL CHANGES)

BONANZA CREEK ENERGY OPERATING COMPANY, LLC
MULE DEER O-32-29XRLNB
LOT 2, SECTION 5, T5N, R61W, 6th P.M.
WELD COUNTY, COLORADO
 SURVEYED BY: DALLAS NIELSON 02-22-19
 DRAWN BY: CIVIL 04-11-19
 SCALE: 1" = 1000'