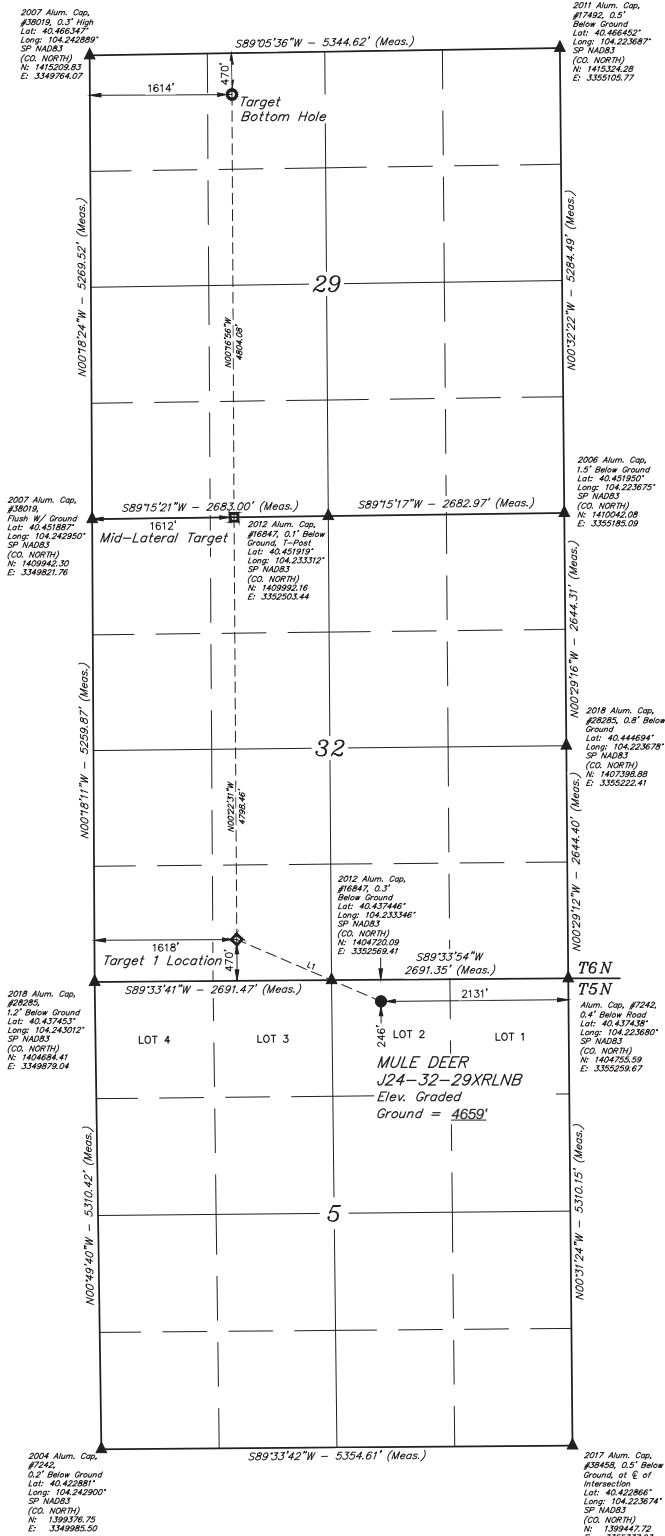


LEGEND:
● = PROPOSED WELLHEAD.
○ = TARGET BOTTOM HOLE.
○ = TARGET 1 LOCATION.
□ = MID-LATERAL TARGET.
▲ = SECTION CORNERS LOCATED. (NAD 83)

NOTE:
Distances referenced on plat to section lines are perpendicular.

LINE TABLE		
LINE	DIRECTION	LENGTH
L1	N66°46'25"W	1782.77'



PDOP = 1.3

NAD 83 (SURFACE LOCATION)	NAD 83 (TARGET 1 LOCATION)	NAD 83 (MID-LATERAL TARGET)	NAD 83 (TARGET BOTTOM HOLE)
Latitude - 40°26'12.57" (40.436717)	Latitude - 40°26'13.46" (40.438195)	Latitude - 40°27'06.36" (40.451966)	Latitude - 40°27'54.32" (40.465889)
Longitude - 104°13'52.80" (104.231334)	Longitude - 104°14'13.90" (104.237196)	Longitude - 104°14'13.77" (104.237160)	Longitude - 104°14'13.54" (104.237895)
State Plane NAD 83 (CO. NORTH)	State Plane NAD 83 (CO. NORTH)	State Plane NAD 83 (CO. NORTH)	State Plane NAD 83 (CO. NORTH)
N: 1404482.04 E: 3353132.95	N: 1405115.68 E: 3351491.27	N: 1409972.28 E: 3351432.97	N: 1414774.55 E: 3351382.43

BASIS OF BEARINGS
TRANSVERSE MERCATOR PROJECTION WITH
A CENTRAL MERIDIAN OF W105°00'00".
BASIS OF ELEVATION
OPUS SOLUTION GENERATED NAVD 88
UCLS, LLC
Corporate Office * 85 South 200 East
Vernal, UT 84078 * (435) 789-1017

CERTIFICATE OF REGISTRATION
THIS IS TO CERTIFY THAT THE ABOVE NAMED SURVEYOR HAS BEEN REGISTERED AS A PROFESSIONAL LAND SURVEYOR IN THE STATE OF COLORADO UNDER MY SUPERVISION AND THAT THE SAME ARE TRUE AND CORRECT TO THE BEST OF MY KNOWLEDGE AND BELIEF.
REGISTERED LAND SURVEYOR
REGISTRATION NO. 28283
STATE OF COLORADO
JAN 19 2019

REV: 1 06-19-19 T.B.S. (SHL CHANGES)
BONANZA CREEK ENERGY
OPERATING COMPANY, LLC
MULE DEER J24-32-29XRLNB
LOT 2, SECTION 5, T5N, R61W, 6th P.M.
WELD COUNTY, COLORADO
SURVEYED BY: DALLAS NIELSON 02-22-19 SCALE: 1" = 1000'
DRAWN BY: CIVIE 04-11-19
WELL LOCATION PLAT