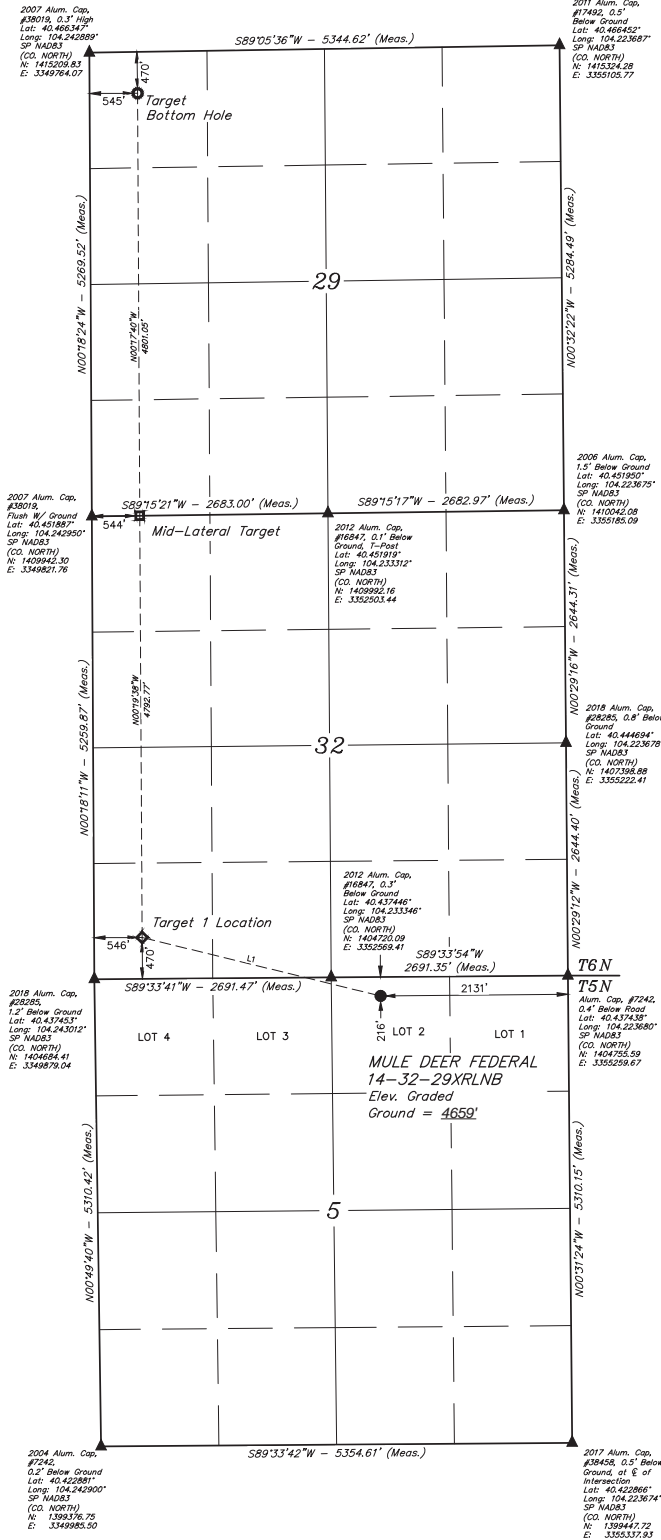


**LEGEND:**  
 = PROPOSED WELLHEAD.  
 = TARGET BOTTOM HOLE.  
 = TARGET 1 LOCATION.  
 = MID-LATERAL TARGET.  
 = SECTION CORNERS LOCATED. (NAD 83)

**NOTE:**  
 Distances referenced on plat to section lines are perpendicular.

T5N, R61W, 6th P.M.

LINE TABLE		
LINE	DIRECTION	LENGTH
L1	N76°12'57"W	2790.40'



PDOP = 1.4



NAD 83 (SURFACE LOCATION)	NAD 83 (TARGET 1 LOCATION)	NAD 83 (MID-LATERAL TARGET)	NAD 83 (TARGET BOTTOM HOLE)
LATITUDE = 40°20'12.57" (40.338337)	LATITUDE = 40°20'13.47" (40.338727)	LATITUDE = 40°27'06.32" (40.451893)	LATITUDE = 40°27'54.24" (40.465888)
LONGITUDE = 104°13'52.80" (104.231334)	LONGITUDE = 104°14'27.76" (104.241046)	LONGITUDE = 104°14'27.59" (104.240996)	LONGITUDE = 104°14'27.37" (104.240936)
STATE PLANE NAD 83 (CO. NORTH)	STATE PLANE NAD 83 (CO. NORTH)	STATE PLANE NAD 83 (CO. NORTH)	STATE PLANE NAD 83 (CO. NORTH)
N: 1404512.08 E: 3353132.56	N: 1405161.48 E: 3350419.70	N: 1409952.41 E: 3350365.50	N: 1414751.68 E: 3350313.95

**BASIS OF BEARINGS**  
 TRANSVERSE MERCATOR PROJECTION WITH  
 A CENTRAL MERIDIAN OF W105°00'00".

**BASIS OF ELEVATION**  
 OPUS SOLUTION GENERATED NAVD 88



**UELS, LLC**  
 Corporate Office \* 85 South 200 East  
 Vernal, UT 84078 \* (435) 789-1017



THIS IS TO CERTIFY THAT THE ABOVE IS A TRUE AND CORRECT COPY OF THE ORIGINAL SURVEY MAP AND THAT THE SAME ARE TRUE AND CORRECT TO THE BEST OF MY KNOWLEDGE AND BELIEF.

**BONANZA CREEK ENERGY OPERATING COMPANY, LLC**  
 MULE DEER FEDERAL 14-32-29XRLNB  
 LOT 2, SECTION 5, T5N, R61W, 6th P.M.  
 WELD COUNTY, COLORADO

REGISTERED LAND SURVEYOR  
 REGISTRATION NO. 28283  
 STATE OF COLORADO LAND SURVEYORS

REV: 1 06-19-19 T.B.S. (SHL CHANGES)

SURVEYED BY	DALLAS NIELSON	02-22-19	SCALE
DRAWN BY	CIVIE	04-11-19	1" = 1000'

**WELL LOCATION PLAT**