



410 17th Street, Suite 1400
Denver, CO 80202
(720) 440-6100 phone
(720) 305-0804 fax

Bonanzacrk.com

March 30, 2020

State of Colorado
Oil and Gas Conservation Commission
1120 Lincoln Street, Suite 801
Denver, CO 80203

RE: Proposed Wellbore Spacing Unit
Mule Deer Federal E-32-29XRLNB
Niobrara New Drill
Lot 2 Section 5, Township 5N, Range 61W, 6th PM
Weld County, Colorado

Dear Director Robbins,

Bonanza Creek Energy Operating Company, LLC. ("Bonanza Creek") is planning to drill the above captioned well in accordance with the provisions of Colorado Oil and Gas Conservation Commission (COGCC) Rule 318A.e.

Bonanza Creek's proposed wellbore spacing unit consists of:

Township 6N, Range 61W (Weld County):

Section 29: W2W2
Section 30: E2E2
Section 31: E2E2
Section 32: W2W2

Total acres: 640 ac

The 30 day notification time period has passed and we have not yet received any objections to such well locations or proposed spacing unit, therefore Bonanza Creek hereby requests the Director to approve the above mentioned well. Bonanza Creek respectfully requests the COGCC review the enclosed map illustrating the proposed wellbore spacing unit.

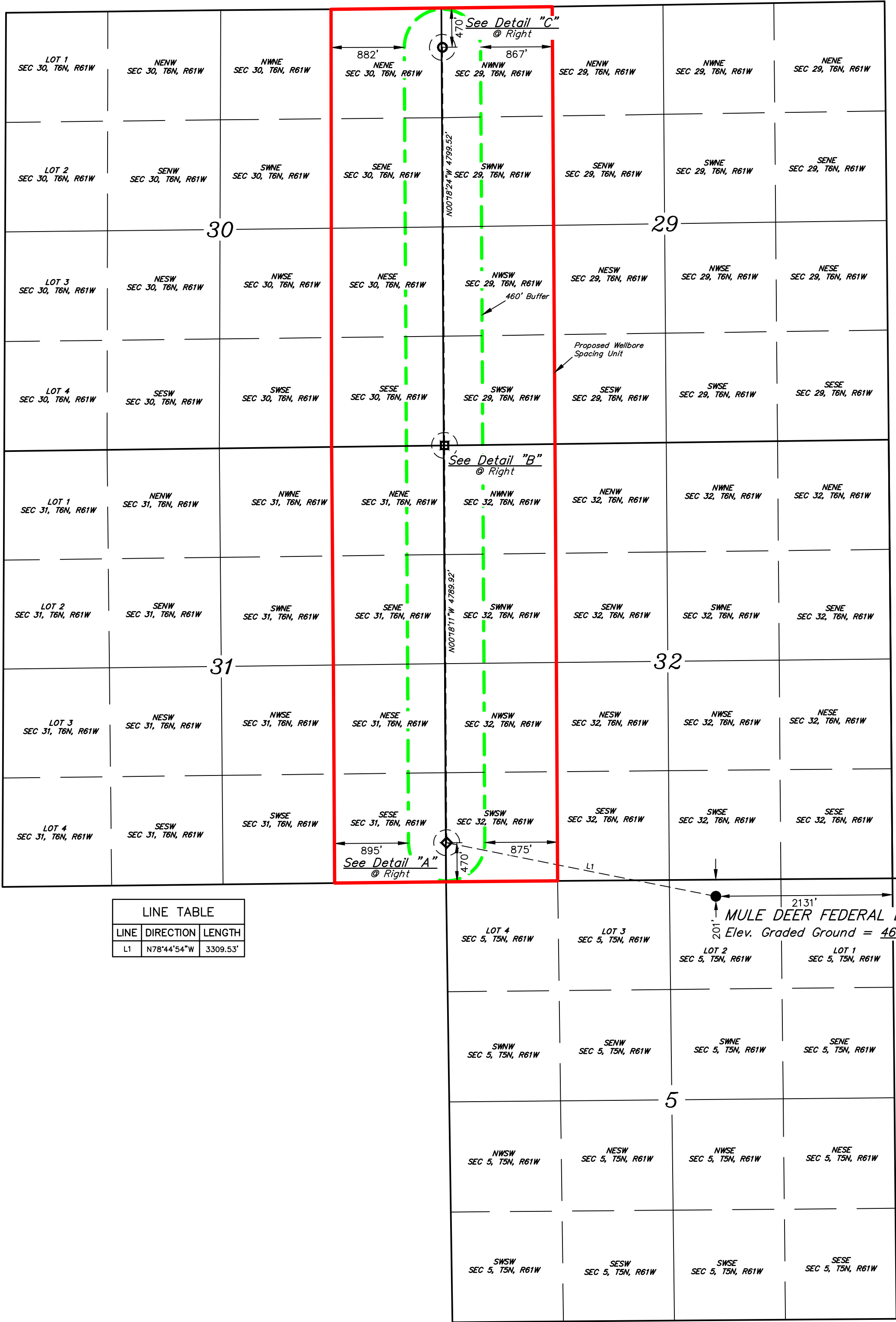
Regards,
Bonanza Creek Energy Operating Company, LLC.

Kate Miller
Regulatory Specialist

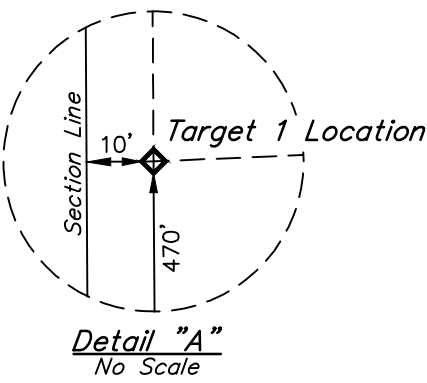
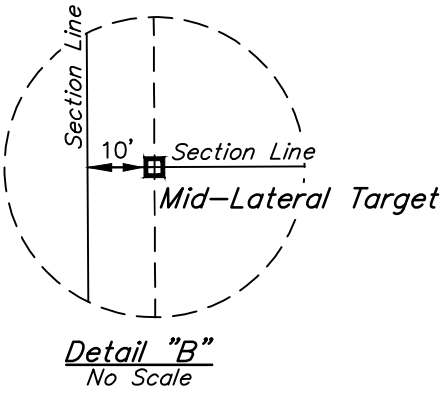
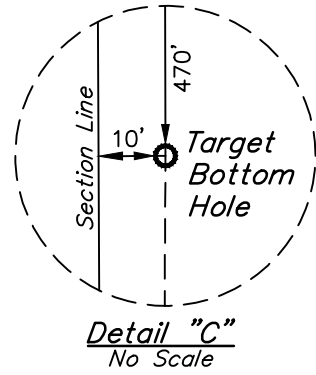
LEGEND:
● = PROPOSED WELLHEAD.
○ = TARGET BOTTOM HOLE.
◆ = TARGET 1 LOCATION.
□ = MID-LATERAL TARGET.

T5N, R61W, 6th P.M.

NOTE:
Distances referenced
on plat to section lines
are perpendicular.



LINE TABLE		
LINE	DIRECTION	LENGTH
L1	N78°44'54"W	3309.53'



PDOP = 1.4			
NAD 83 (SURFACE LOCATION)	NAD 83 (TARGET 1 LOCATION)	NAD 83 (MID-LATERAL TARGET)	NAD 83 (TARGET BOTTOM HOLE)
LATITUDE = 40°26'12.82" (40.436894°)	LATITUDE = 40°26'19.47" (40.438743°)	LATITUDE = 40°27'06.79" (40.451887°)	LATITUDE = 40°27'54.21" (40.465057°)
LONGITUDE = 104°13'52.80" (104.231334°)	LONGITUDE = 104°14'34.69" (104.242971°)	LONGITUDE = 104°14'34.49" (104.242914°)	LONGITUDE = 104°14'34.29" (104.242858°)
STATE PLANE NAD 83 (CO. NORTH)	STATE PLANE NAD 83 (CO. NORTH)	STATE PLANE NAD 83 (CO. NORTH)	STATE PLANE NAD 83 (CO. NORTH)
N: 1404527.02' E: 3353132.37'	N: 1405154.37' E: 3349883.92'	N: 1409942.49' E: 3349831.76'	N: 1414740.20' E: 3349779.21'

BASIS OF BEARINGS
TRANSVERSE MERCATOR PROJECTION WITH
A CENTRAL MERIDIAN OF W105°00'00".

BASIS OF ELEVATION
OPUS SOLUTION GENERATED NAVD 88

UELS, LLC
Corporate Office * 85 South 200 East
Vernal, UT 84078 * (435) 789-1017

ENGINEERING & LAND SURVEYING



REV: 2 01-03-20 C.IVIE (UPDATE SURFACE DIMENSION LAYER)

BONANZA CREEK ENERGY
OPERATING COMPANY, LLC
MULE DEER FEDERAL E-32-29XRLNB
LOT 2, SECTION 5, T5N, R61W, 6th P.M.
WELD COUNTY, COLORADO

SURVEYED BY	DALLAS NIELSON	02-22-19	SCALE
DRAWN BY	T.B.S.	05-29-19	1" = 1000'

WELL SPACING PLAT