



**BAYSWATER**

# **Bayswater Exploration & Production, LLC**

**DJ Basin**

**Groves Farm 34-L Pad**

**GROVES FARM P-34-33HN**

**Wellbore #1**

**Plan: Design #1**

## **Standard Planning Report**

**20 April, 2020**



# BAYSWATER

Bayswater Exploration &amp; Production, LLC

Pad Name: Groves Farm 34-L Pad  
Well Name: GROVES FARM P-34-33HN  
Ground Level: 4844.0  
SHL Latitude: 40° 31' 48.687 N  
SHL Longitude: 104° 38' 34.544 W

## SECTION DETAILS

Sec	MD	Inc	Azi	TVD	+N/-S	+E/-W	Dleg	TFace	VSect	Target
1	0.0	0.00	0.00	0.0	0.0	0.0	0.00	0.00	0.0	
2	1500.0	0.00	0.00	1500.0	0.0	0.0	0.00	0.00	0.0	
3	2558.6	21.17	115.47	2534.7	-83.2	174.6	2.00	115.47	-170.3	
4	5482.7	21.17	115.47	5261.3	-537.4	1128.0	0.00	0.00	-1100.0	
5	6541.3	0.00	270.79	6296.0	-620.6	1302.6	2.00	180.00	-1270.3	
6	6741.3	0.00	270.79	6496.0	-620.6	1302.6	0.00	0.00	-1270.3	
7	7638.5	89.72	270.79	7069.0	-612.7	732.5	10.00	0.00	-701.3	GF P-34-33HN LP
8	17898.5	89.72	270.79	7119.0	-472.1	-9526.4	0.00	0.00	9538.1	GF P-34-33HN PBHL

## DESIGN TARGET DETAILS

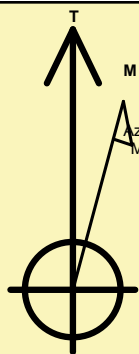
Name	TVD	+N/-S	+E/-W	Northing	Easting	Latitude	Longitude	Shape
GF P-34-33HN LP	7069.0	-612.7	732.5	1436534.98	3238979.40	40° 31' 42.632 N	104° 38' 25.058 W	Point
GF P-34-33HN PBHL	- plan hits target center 7119.0	-472.1	-9526.4	1436576.45	3228719.63	40° 31' 44.004 N	104° 40' 37.916 W	Point
	- plan hits target center							

## REFERENCE INFORMATION

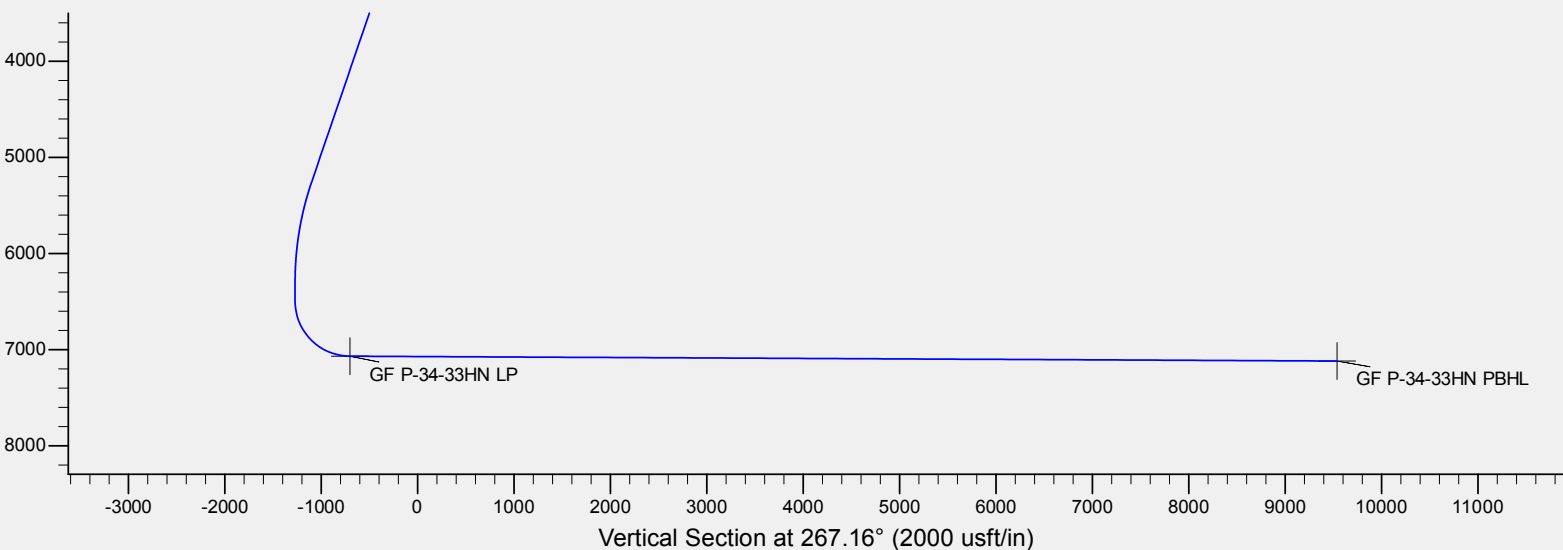
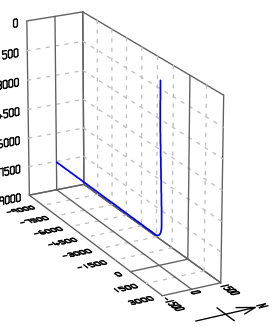
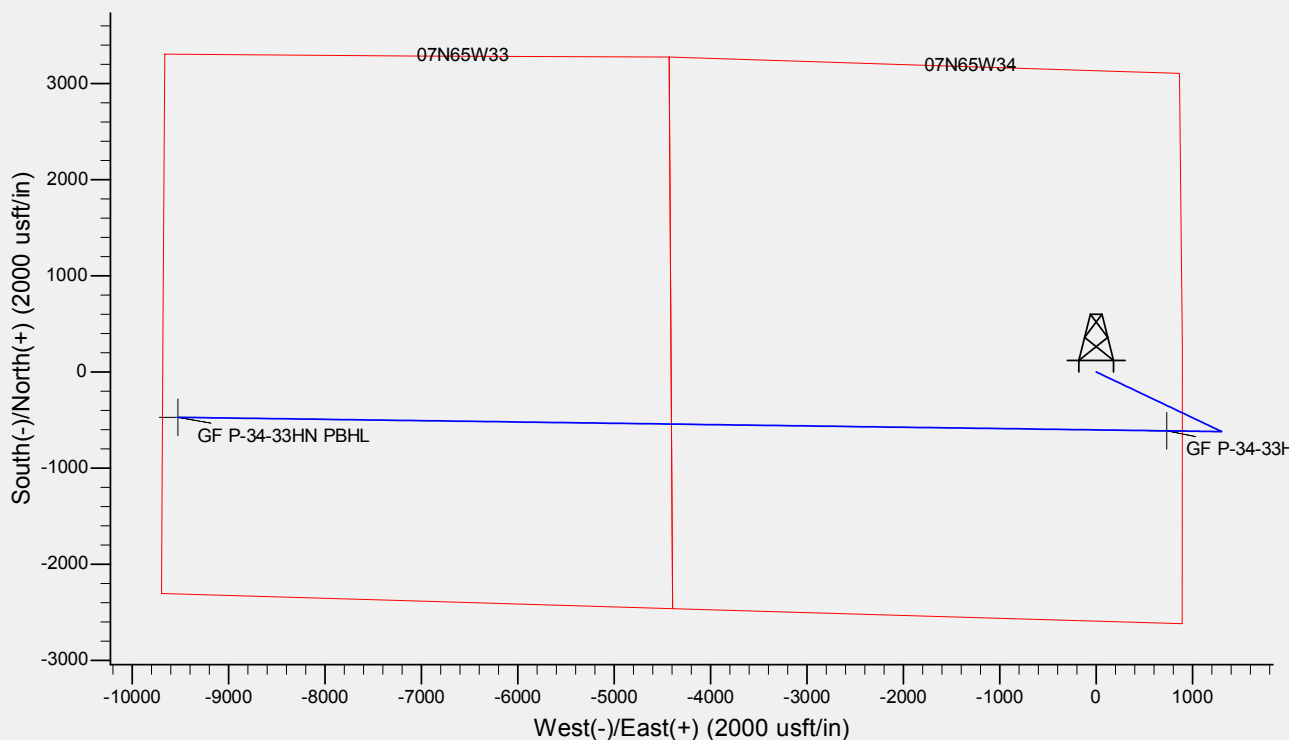
Co-ordinate (N/E) Reference: Well GROVES FARM P-34-33HN, True North  
Vertical (TVD) Reference: KB @ 4869.0usft (Original Well Elev)  
Section (VS) Reference: Slot - (0.0N, 0.0E)  
Measured Depth Reference: KB @ 4869.0usft (Original Well Elev)  
Calculation Method: Minimum Curvature

## CASING DETAILS

No casing data is available



Azimuths to True North  
Magnetic North: 7.86°  
  
Magnetic Field  
Strength: 52151.2nT  
Dip Angle: 66.90°  
Date: 4/8/2020  
Model: IGRF2015





<b>Database:</b>	EDM	<b>Local Co-ordinate Reference:</b>	Well GROVES FARM P-34-33HN
<b>Company:</b>	Bayswater Exploration & Production, LLC	<b>TVD Reference:</b>	KB @ 4869.0usft (Original Well Elev)
<b>Project:</b>	DJ Basin	<b>MD Reference:</b>	KB @ 4869.0usft (Original Well Elev)
<b>Site:</b>	Groves Farm 34-L Pad	<b>North Reference:</b>	True
<b>Well:</b>	GROVES FARM P-34-33HN	<b>Survey Calculation Method:</b>	Minimum Curvature
<b>Wellbore:</b>	Wellbore #1		
<b>Design:</b>	Design #1		

<b>Project</b>	DJ Basin, DJ Basin		
<b>Map System:</b>	US State Plane 1983	<b>System Datum:</b>	Mean Sea Level
<b>Geo Datum:</b>	North American Datum 1983		
<b>Map Zone:</b>	Colorado Northern Zone		

Site		Groves Farm 34-L Pad			
Site Position:		Northing:	1,437,185.82 usft	Latitude:	40° 31' 49.134 N
From:	Lat/Long	Easting:	3,238,241.98 usft	Longitude:	104° 38' 34.526 W
Position Uncertainty:	0.0 usft	Slot Radius:	13-3/16 "	Grid Convergence:	0.55 °

Well	GROVES FARM P-34-33HN					
Well Position	+N/-S	-45.2 usft	Northing:	1,437,140.63 usft	Latitude:	40° 31' 48.687 N
	+E/-W	-1.4 usft	Easting:	3,238,241.03 usft	Longitude:	104° 38' 34.544 W
Position Uncertainty		0.0 usft	Wellhead Elevation:		Ground Level:	4,844.0 usft

<b>Wellbore</b>	Wellbore #1				
<b>Magnetics</b>	<b>Model Name</b>	<b>Sample Date</b>	<b>Declination (°)</b>	<b>Dip Angle (°)</b>	<b>Field Strength (nT)</b>
	IGRF2015	4/8/2020	7.86	66.90	52,151.15280739

<b>Design</b>	Design #1			
<b>Audit Notes:</b>				
<b>Version:</b>	<b>Phase:</b>	PLAN	<b>Tie On Depth:</b>	0.0
<b>Vertical Section:</b>	<b>Depth From (TVD) (usft)</b>	<b>+N/-S (usft)</b>	<b>+E/-W (usft)</b>	<b>Direction (°)</b>
	0.0	0.0	0.0	267.16

<b>Plan Survey Tool Program</b>	<b>Date</b>	4/20/2020		
<b>Depth From (usft)</b>	<b>Depth To (usft)</b>	<b>Survey (Wellbore)</b>	<b>Tool Name</b>	<b>Remarks</b>
1	0.0	17,898.5	Design #1 (Wellbore #1)	MWD
				OWSG MWD - Standard

<b>Plan Sections</b>										
<b>Measured Depth (usft)</b>	<b>Inclination (°)</b>	<b>Azimuth (°)</b>	<b>Vertical Depth (usft)</b>	<b>+N/-S (usft)</b>	<b>+E/-W (usft)</b>	<b>Dogleg Rate (°/100usft)</b>	<b>Build Rate (°/100usft)</b>	<b>Turn Rate (°/100usft)</b>	<b>TFO (°)</b>	<b>Target</b>
0.0	0.00	0.00	0.0	0.0	0.0	0.00	0.00	0.00	0.00	
1,500.0	0.00	0.00	1,500.0	0.0	0.0	0.00	0.00	0.00	0.00	
2,558.6	21.17	115.47	2,534.7	-83.2	174.6	2.00	2.00	0.00	115.47	
5,482.7	21.17	115.47	5,261.3	-537.4	1,128.0	0.00	0.00	0.00	0.00	
6,541.3	0.00	270.79	6,296.0	-620.6	1,302.6	2.00	-2.00	0.00	180.00	
6,741.3	0.00	270.79	6,496.0	-620.6	1,302.6	0.00	0.00	0.00	0.00	
7,638.5	89.72	270.79	7,069.0	-612.7	732.5	10.00	10.00	0.00	0.00	GF P-34-33HN LP
17,898.5	89.72	270.79	7,119.0	-472.1	-9,526.4	0.00	0.00	0.00	0.00	GF P-34-33HN PBHL



<b>Database:</b>	EDM	<b>Local Co-ordinate Reference:</b>	Well GROVES FARM P-34-33HN
<b>Company:</b>	Bayswater Exploration & Production, LLC	<b>TVD Reference:</b>	KB @ 4869.0usft (Original Well Elev)
<b>Project:</b>	DJ Basin	<b>MD Reference:</b>	KB @ 4869.0usft (Original Well Elev)
<b>Site:</b>	Groves Farm 34-L Pad	<b>North Reference:</b>	True
<b>Well:</b>	GROVES FARM P-34-33HN	<b>Survey Calculation Method:</b>	Minimum Curvature
<b>Wellbore:</b>	Wellbore #1		
<b>Design:</b>	Design #1		

Planned Survey									
Measured Depth (usft)	Inclination (°)	Azimuth (°)	Vertical Depth (usft)	+N/-S (usft)	+E/-W (usft)	Vertical Section (usft)	Dogleg Rate (°/100usft)	Build Rate (°/100usft)	Turn Rate (°/100usft)
0.0	0.00	0.00	0.0	0.0	0.0	0.0	0.00	0.00	0.00
100.0	0.00	0.00	100.0	0.0	0.0	0.0	0.00	0.00	0.00
200.0	0.00	0.00	200.0	0.0	0.0	0.0	0.00	0.00	0.00
300.0	0.00	0.00	300.0	0.0	0.0	0.0	0.00	0.00	0.00
400.0	0.00	0.00	400.0	0.0	0.0	0.0	0.00	0.00	0.00
500.0	0.00	0.00	500.0	0.0	0.0	0.0	0.00	0.00	0.00
600.0	0.00	0.00	600.0	0.0	0.0	0.0	0.00	0.00	0.00
700.0	0.00	0.00	700.0	0.0	0.0	0.0	0.00	0.00	0.00
800.0	0.00	0.00	800.0	0.0	0.0	0.0	0.00	0.00	0.00
900.0	0.00	0.00	900.0	0.0	0.0	0.0	0.00	0.00	0.00
1,000.0	0.00	0.00	1,000.0	0.0	0.0	0.0	0.00	0.00	0.00
1,100.0	0.00	0.00	1,100.0	0.0	0.0	0.0	0.00	0.00	0.00
1,200.0	0.00	0.00	1,200.0	0.0	0.0	0.0	0.00	0.00	0.00
1,300.0	0.00	0.00	1,300.0	0.0	0.0	0.0	0.00	0.00	0.00
1,400.0	0.00	0.00	1,400.0	0.0	0.0	0.0	0.00	0.00	0.00
1,500.0	0.00	0.00	1,500.0	0.0	0.0	0.0	0.00	0.00	0.00
1,600.0	2.00	115.47	1,600.0	-0.8	1.6	-1.5	2.00	2.00	0.00
1,700.0	4.00	115.47	1,699.8	-3.0	6.3	-6.1	2.00	2.00	0.00
1,800.0	6.00	115.47	1,799.5	-6.7	14.2	-13.8	2.00	2.00	0.00
1,900.0	8.00	115.47	1,898.7	-12.0	25.2	-24.5	2.00	2.00	0.00
2,000.0	10.00	115.47	1,997.5	-18.7	39.3	-38.3	2.00	2.00	0.00
2,100.0	12.00	115.47	2,095.6	-26.9	56.5	-55.1	2.00	2.00	0.00
2,200.0	14.00	115.47	2,193.1	-36.6	76.8	-74.9	2.00	2.00	0.00
2,300.0	16.00	115.47	2,289.6	-47.7	100.2	-97.7	2.00	2.00	0.00
2,400.0	18.00	115.47	2,385.3	-60.3	126.6	-123.4	2.00	2.00	0.00
2,500.0	20.00	115.47	2,479.8	-74.3	156.0	-152.1	2.00	2.00	0.00
2,558.6	21.17	115.47	2,534.7	-83.2	174.6	-170.3	2.00	2.00	0.00
2,600.0	21.17	115.47	2,573.3	-89.6	188.1	-183.4	0.00	0.00	0.00
2,700.0	21.17	115.47	2,666.5	-105.1	220.7	-215.2	0.00	0.00	0.00
2,800.0	21.17	115.47	2,759.8	-120.7	253.3	-247.0	0.00	0.00	0.00
2,900.0	21.17	115.47	2,853.0	-136.2	285.9	-278.8	0.00	0.00	0.00
3,000.0	21.17	115.47	2,946.3	-151.7	318.5	-310.6	0.00	0.00	0.00
3,100.0	21.17	115.47	3,039.5	-167.3	351.1	-342.4	0.00	0.00	0.00
3,200.0	21.17	115.47	3,132.8	-182.8	383.7	-374.2	0.00	0.00	0.00
3,300.0	21.17	115.47	3,226.0	-198.3	416.3	-406.0	0.00	0.00	0.00
3,400.0	21.17	115.47	3,319.3	-213.9	448.9	-437.8	0.00	0.00	0.00
3,500.0	21.17	115.47	3,412.5	-229.4	481.5	-469.6	0.00	0.00	0.00
3,600.0	21.17	115.47	3,505.8	-244.9	514.1	-501.4	0.00	0.00	0.00
3,700.0	21.17	115.47	3,599.0	-260.5	546.7	-533.2	0.00	0.00	0.00
3,800.0	21.17	115.47	3,692.3	-276.0	579.4	-565.0	0.00	0.00	0.00
3,900.0	21.17	115.47	3,785.5	-291.5	612.0	-596.8	0.00	0.00	0.00
4,000.0	21.17	115.47	3,878.8	-307.1	644.6	-628.6	0.00	0.00	0.00
4,100.0	21.17	115.47	3,972.0	-322.6	677.2	-660.4	0.00	0.00	0.00
4,200.0	21.17	115.47	4,065.3	-338.1	709.8	-692.2	0.00	0.00	0.00
4,300.0	21.17	115.47	4,158.5	-353.7	742.4	-724.0	0.00	0.00	0.00
4,400.0	21.17	115.47	4,251.8	-369.2	775.0	-755.8	0.00	0.00	0.00
4,500.0	21.17	115.47	4,345.0	-384.7	807.6	-787.6	0.00	0.00	0.00
4,600.0	21.17	115.47	4,438.3	-400.3	840.2	-819.4	0.00	0.00	0.00
4,700.0	21.17	115.47	4,531.5	-415.8	872.8	-851.2	0.00	0.00	0.00
4,800.0	21.17	115.47	4,624.8	-431.3	905.4	-883.0	0.00	0.00	0.00
4,900.0	21.17	115.47	4,718.0	-446.9	938.0	-914.8	0.00	0.00	0.00
5,000.0	21.17	115.47	4,811.3	-462.4	970.6	-946.6	0.00	0.00	0.00
5,100.0	21.17	115.47	4,904.5	-477.9	1,003.2	-978.4	0.00	0.00	0.00
5,200.0	21.17	115.47	4,997.8	-493.5	1,035.8	-1,010.2	0.00	0.00	0.00



<b>Database:</b>	EDM	<b>Local Co-ordinate Reference:</b>	Well GROVES FARM P-34-33HN
<b>Company:</b>	Bayswater Exploration & Production, LLC	<b>TVD Reference:</b>	KB @ 4869.0usft (Original Well Elev)
<b>Project:</b>	DJ Basin	<b>MD Reference:</b>	KB @ 4869.0usft (Original Well Elev)
<b>Site:</b>	Groves Farm 34-L Pad	<b>North Reference:</b>	True
<b>Well:</b>	GROVES FARM P-34-33HN	<b>Survey Calculation Method:</b>	Minimum Curvature
<b>Wellbore:</b>	Wellbore #1		
<b>Design:</b>	Design #1		

Planned Survey									
Measured Depth (usft)	Inclination (°)	Azimuth (°)	Vertical Depth (usft)	+N/-S (usft)	+E/-W (usft)	Vertical Section (usft)	Dogleg Rate (°/100usft)	Build Rate (°/100usft)	Turn Rate (°/100usft)
5,300.0	21.17	115.47	5,091.0	-509.0	1,068.5	-1,041.9	0.00	0.00	0.00
5,400.0	21.17	115.47	5,184.3	-524.5	1,101.1	-1,073.7	0.00	0.00	0.00
5,482.7	21.17	115.47	5,261.3	-537.4	1,128.0	-1,100.0	0.00	0.00	0.00
5,500.0	20.83	115.47	5,277.5	-540.1	1,133.6	-1,105.5	2.00	-2.00	0.00
5,600.0	18.83	115.47	5,371.6	-554.6	1,164.2	-1,135.4	2.00	-2.00	0.00
5,700.0	16.83	115.47	5,466.8	-567.8	1,191.9	-1,162.3	2.00	-2.00	0.00
5,800.0	14.83	115.47	5,563.0	-579.5	1,216.5	-1,186.3	2.00	-2.00	0.00
5,900.0	12.83	115.47	5,660.1	-589.8	1,238.1	-1,207.4	2.00	-2.00	0.00
6,000.0	10.83	115.47	5,758.0	-598.6	1,256.6	-1,225.4	2.00	-2.00	0.00
6,100.0	8.83	115.47	5,856.5	-606.0	1,272.0	-1,240.4	2.00	-2.00	0.00
6,200.0	6.83	115.47	5,955.6	-611.8	1,284.3	-1,252.4	2.00	-2.00	0.00
6,300.0	4.83	115.47	6,055.0	-616.2	1,293.4	-1,261.3	2.00	-2.00	0.00
6,400.0	2.83	115.47	6,154.8	-619.1	1,299.5	-1,267.2	2.00	-2.00	0.00
6,500.0	0.83	115.47	6,254.8	-620.4	1,302.3	-1,270.0	2.00	-2.00	0.00
6,541.3	0.00	270.79	6,296.0	-620.6	1,302.6	-1,270.3	2.00	-2.00	0.00
6,600.0	0.00	0.00	6,354.8	-620.6	1,302.6	-1,270.3	0.00	0.00	0.00
6,700.0	0.00	0.00	6,454.8	-620.6	1,302.6	-1,270.3	0.00	0.00	0.00
6,741.3	0.00	270.79	6,496.0	-620.6	1,302.6	-1,270.3	0.00	0.00	0.00
6,800.0	5.87	270.79	6,554.7	-620.5	1,299.6	-1,267.3	10.00	10.00	0.00
6,900.0	15.87	270.79	6,652.7	-620.3	1,280.8	-1,248.5	10.00	10.00	0.00
7,000.0	25.87	270.79	6,746.1	-619.8	1,245.2	-1,213.0	10.00	10.00	0.00
7,100.0	35.87	270.79	6,831.8	-619.1	1,193.9	-1,161.8	10.00	10.00	0.00
7,200.0	45.87	270.79	6,907.3	-618.2	1,128.6	-1,096.6	10.00	10.00	0.00
7,300.0	55.87	270.79	6,970.3	-617.1	1,051.1	-1,019.3	10.00	10.00	0.00
7,400.0	65.87	270.79	7,018.9	-615.9	963.9	-932.2	10.00	10.00	0.00
7,500.0	75.87	270.79	7,051.7	-614.6	869.5	-838.1	10.00	10.00	0.00
7,600.0	85.87	270.79	7,067.5	-613.3	770.9	-739.6	10.00	10.00	0.00
7,638.5	89.72	270.79	7,069.0	-612.7	732.5	-701.3	10.00	10.00	0.00
GF P-34-33HN LP									
7,700.0	89.72	270.79	7,069.3	-611.9	671.0	-639.9	0.00	0.00	0.00
7,800.0	89.72	270.79	7,069.8	-610.5	571.0	-540.1	0.00	0.00	0.00
7,900.0	89.72	270.79	7,070.3	-609.2	471.0	-440.3	0.00	0.00	0.00
8,000.0	89.72	270.79	7,070.8	-607.8	371.0	-340.5	0.00	0.00	0.00
8,100.0	89.72	270.79	7,071.2	-606.4	271.0	-240.7	0.00	0.00	0.00
8,200.0	89.72	270.79	7,071.7	-605.1	171.0	-140.9	0.00	0.00	0.00
8,300.0	89.72	270.79	7,072.2	-603.7	71.1	-41.1	0.00	0.00	0.00
8,400.0	89.72	270.79	7,072.7	-602.3	-28.9	58.7	0.00	0.00	0.00
8,500.0	89.72	270.79	7,073.2	-600.9	-128.9	158.5	0.00	0.00	0.00
8,600.0	89.72	270.79	7,073.7	-599.6	-228.9	258.3	0.00	0.00	0.00
8,700.0	89.72	270.79	7,074.2	-598.2	-328.9	358.1	0.00	0.00	0.00
8,800.0	89.72	270.79	7,074.7	-596.8	-428.9	457.9	0.00	0.00	0.00
8,900.0	89.72	270.79	7,075.1	-595.5	-528.9	557.7	0.00	0.00	0.00
9,000.0	89.72	270.79	7,075.6	-594.1	-628.9	657.5	0.00	0.00	0.00
9,100.0	89.72	270.79	7,076.1	-592.7	-728.9	757.3	0.00	0.00	0.00
9,200.0	89.72	270.79	7,076.6	-591.3	-828.9	857.1	0.00	0.00	0.00
9,300.0	89.72	270.79	7,077.1	-590.0	-928.8	956.9	0.00	0.00	0.00
9,400.0	89.72	270.79	7,077.6	-588.6	-1,028.8	1,056.7	0.00	0.00	0.00
9,500.0	89.72	270.79	7,078.1	-587.2	-1,128.8	1,156.5	0.00	0.00	0.00
9,600.0	89.72	270.79	7,078.6	-585.9	-1,228.8	1,256.3	0.00	0.00	0.00
9,700.0	89.72	270.79	7,079.0	-584.5	-1,328.8	1,356.1	0.00	0.00	0.00
9,800.0	89.72	270.79	7,079.5	-583.1	-1,428.8	1,455.9	0.00	0.00	0.00
9,900.0	89.72	270.79	7,080.0	-581.7	-1,528.8	1,555.7	0.00	0.00	0.00
10,000.0	89.72	270.79	7,080.5	-580.4	-1,628.8	1,655.5	0.00	0.00	0.00



<b>Database:</b>	EDM	<b>Local Co-ordinate Reference:</b>	Well GROVES FARM P-34-33HN
<b>Company:</b>	Bayswater Exploration & Production, LLC	<b>TVD Reference:</b>	KB @ 4869.0usft (Original Well Elev)
<b>Project:</b>	DJ Basin	<b>MD Reference:</b>	KB @ 4869.0usft (Original Well Elev)
<b>Site:</b>	Groves Farm 34-L Pad	<b>North Reference:</b>	True
<b>Well:</b>	GROVES FARM P-34-33HN	<b>Survey Calculation Method:</b>	Minimum Curvature
<b>Wellbore:</b>	Wellbore #1		
<b>Design:</b>	Design #1		

Planned Survey										
Measured Depth (usft)	Inclination (°)	Azimuth (°)	Vertical Depth (usft)	+N/-S (usft)	+E/-W (usft)	Vertical Section (usft)	Dogleg Rate (°/100usft)	Build Rate (°/100usft)	Turn Rate (°/100usft)	
10,100.0	89.72	270.79	7,081.0	-579.0	-1,728.8	1,755.3	0.00	0.00	0.00	
10,200.0	89.72	270.79	7,081.5	-577.6	-1,828.7	1,855.1	0.00	0.00	0.00	
10,300.0	89.72	270.79	7,082.0	-576.3	-1,928.7	1,954.9	0.00	0.00	0.00	
10,400.0	89.72	270.79	7,082.5	-574.9	-2,028.7	2,054.7	0.00	0.00	0.00	
10,500.0	89.72	270.79	7,082.9	-573.5	-2,128.7	2,154.5	0.00	0.00	0.00	
10,600.0	89.72	270.79	7,083.4	-572.2	-2,228.7	2,254.3	0.00	0.00	0.00	
10,700.0	89.72	270.79	7,083.9	-570.8	-2,328.7	2,354.1	0.00	0.00	0.00	
10,800.0	89.72	270.79	7,084.4	-569.4	-2,428.7	2,453.9	0.00	0.00	0.00	
10,900.0	89.72	270.79	7,084.9	-568.0	-2,528.7	2,553.7	0.00	0.00	0.00	
11,000.0	89.72	270.79	7,085.4	-566.7	-2,628.7	2,653.5	0.00	0.00	0.00	
11,100.0	89.72	270.79	7,085.9	-565.3	-2,728.7	2,753.3	0.00	0.00	0.00	
11,200.0	89.72	270.79	7,086.4	-563.9	-2,828.6	2,853.1	0.00	0.00	0.00	
11,300.0	89.72	270.79	7,086.8	-562.6	-2,928.6	2,952.9	0.00	0.00	0.00	
11,400.0	89.72	270.79	7,087.3	-561.2	-3,028.6	3,052.7	0.00	0.00	0.00	
11,500.0	89.72	270.79	7,087.8	-559.8	-3,128.6	3,152.5	0.00	0.00	0.00	
11,600.0	89.72	270.79	7,088.3	-558.4	-3,228.6	3,252.3	0.00	0.00	0.00	
11,700.0	89.72	270.79	7,088.8	-557.1	-3,328.6	3,352.1	0.00	0.00	0.00	
11,800.0	89.72	270.79	7,089.3	-555.7	-3,428.6	3,451.9	0.00	0.00	0.00	
11,900.0	89.72	270.79	7,089.8	-554.3	-3,528.6	3,551.7	0.00	0.00	0.00	
12,000.0	89.72	270.79	7,090.3	-553.0	-3,628.6	3,651.5	0.00	0.00	0.00	
12,100.0	89.72	270.79	7,090.7	-551.6	-3,728.5	3,751.3	0.00	0.00	0.00	
12,200.0	89.72	270.79	7,091.2	-550.2	-3,828.5	3,851.1	0.00	0.00	0.00	
12,300.0	89.72	270.79	7,091.7	-548.9	-3,928.5	3,950.9	0.00	0.00	0.00	
12,400.0	89.72	270.79	7,092.2	-547.5	-4,028.5	4,050.7	0.00	0.00	0.00	
12,500.0	89.72	270.79	7,092.7	-546.1	-4,128.5	4,150.5	0.00	0.00	0.00	
12,600.0	89.72	270.79	7,093.2	-544.7	-4,228.5	4,250.3	0.00	0.00	0.00	
12,700.0	89.72	270.79	7,093.7	-543.4	-4,328.5	4,350.1	0.00	0.00	0.00	
12,800.0	89.72	270.79	7,094.2	-542.0	-4,428.5	4,449.9	0.00	0.00	0.00	
12,900.0	89.72	270.79	7,094.6	-540.6	-4,528.5	4,549.7	0.00	0.00	0.00	
13,000.0	89.72	270.79	7,095.1	-539.3	-4,628.5	4,649.5	0.00	0.00	0.00	
13,100.0	89.72	270.79	7,095.6	-537.9	-4,728.4	4,749.3	0.00	0.00	0.00	
13,200.0	89.72	270.79	7,096.1	-536.5	-4,828.4	4,849.1	0.00	0.00	0.00	
13,300.0	89.72	270.79	7,096.6	-535.1	-4,928.4	4,948.9	0.00	0.00	0.00	
13,400.0	89.72	270.79	7,097.1	-533.8	-5,028.4	5,048.7	0.00	0.00	0.00	
13,500.0	89.72	270.79	7,097.6	-532.4	-5,128.4	5,148.5	0.00	0.00	0.00	
13,600.0	89.72	270.79	7,098.1	-531.0	-5,228.4	5,248.3	0.00	0.00	0.00	
13,700.0	89.72	270.79	7,098.5	-529.7	-5,328.4	5,348.1	0.00	0.00	0.00	
13,800.0	89.72	270.79	7,099.0	-528.3	-5,428.4	5,447.9	0.00	0.00	0.00	
13,900.0	89.72	270.79	7,099.5	-526.9	-5,528.4	5,547.7	0.00	0.00	0.00	
14,000.0	89.72	270.79	7,100.0	-525.6	-5,628.3	5,647.5	0.00	0.00	0.00	
14,100.0	89.72	270.79	7,100.5	-524.2	-5,728.3	5,747.3	0.00	0.00	0.00	
14,200.0	89.72	270.79	7,101.0	-522.8	-5,828.3	5,847.1	0.00	0.00	0.00	
14,300.0	89.72	270.79	7,101.5	-521.4	-5,928.3	5,946.9	0.00	0.00	0.00	
14,400.0	89.72	270.79	7,102.0	-520.1	-6,028.3	6,046.7	0.00	0.00	0.00	
14,500.0	89.72	270.79	7,102.4	-518.7	-6,128.3	6,146.5	0.00	0.00	0.00	
14,600.0	89.72	270.79	7,102.9	-517.3	-6,228.3	6,246.3	0.00	0.00	0.00	
14,700.0	89.72	270.79	7,103.4	-516.0	-6,328.3	6,346.1	0.00	0.00	0.00	
14,800.0	89.72	270.79	7,103.9	-514.6	-6,428.3	6,445.9	0.00	0.00	0.00	
14,900.0	89.72	270.79	7,104.4	-513.2	-6,528.3	6,545.7	0.00	0.00	0.00	
15,000.0	89.72	270.79	7,104.9	-511.8	-6,628.2	6,645.5	0.00	0.00	0.00	
15,100.0	89.72	270.79	7,105.4	-510.5	-6,728.2	6,745.2	0.00	0.00	0.00	
15,200.0	89.72	270.79	7,105.8	-509.1	-6,828.2	6,845.0	0.00	0.00	0.00	
15,300.0	89.72	270.79	7,106.3	-507.7	-6,928.2	6,944.8	0.00	0.00	0.00	
15,400.0	89.72	270.79	7,106.8	-506.4	-7,028.2	7,044.6	0.00	0.00	0.00	



<b>Database:</b>	EDM	<b>Local Co-ordinate Reference:</b>	Well GROVES FARM P-34-33HN
<b>Company:</b>	Bayswater Exploration & Production, LLC	<b>TVD Reference:</b>	KB @ 4869.0usft (Original Well Elev)
<b>Project:</b>	DJ Basin	<b>MD Reference:</b>	KB @ 4869.0usft (Original Well Elev)
<b>Site:</b>	Groves Farm 34-L Pad	<b>North Reference:</b>	True
<b>Well:</b>	GROVES FARM P-34-33HN	<b>Survey Calculation Method:</b>	Minimum Curvature
<b>Wellbore:</b>	Wellbore #1		
<b>Design:</b>	Design #1		

Planned Survey										
Measured Depth (usft)	Inclination (°)	Azimuth (°)	Vertical Depth (usft)	+N/-S (usft)	+E/-W (usft)	Vertical Section (usft)	Dogleg Rate (°/100usft)	Build Rate (°/100usft)	Turn Rate (°/100usft)	
15,500.0	89.72	270.79	7,107.3	-505.0	-7,128.2	7,144.4	0.00	0.00	0.00	
15,600.0	89.72	270.79	7,107.8	-503.6	-7,228.2	7,244.2	0.00	0.00	0.00	
15,700.0	89.72	270.79	7,108.3	-502.2	-7,328.2	7,344.0	0.00	0.00	0.00	
15,800.0	89.72	270.79	7,108.8	-500.9	-7,428.2	7,443.8	0.00	0.00	0.00	
15,900.0	89.72	270.79	7,109.3	-499.5	-7,528.1	7,543.6	0.00	0.00	0.00	
16,000.0	89.72	270.79	7,109.7	-498.1	-7,628.1	7,643.4	0.00	0.00	0.00	
16,100.0	89.72	270.79	7,110.2	-496.8	-7,728.1	7,743.2	0.00	0.00	0.00	
16,200.0	89.72	270.79	7,110.7	-495.4	-7,828.1	7,843.0	0.00	0.00	0.00	
16,300.0	89.72	270.79	7,111.2	-494.0	-7,928.1	7,942.8	0.00	0.00	0.00	
16,400.0	89.72	270.79	7,111.7	-492.7	-8,028.1	8,042.6	0.00	0.00	0.00	
16,500.0	89.72	270.79	7,112.2	-491.3	-8,128.1	8,142.4	0.00	0.00	0.00	
16,600.0	89.72	270.79	7,112.7	-489.9	-8,228.1	8,242.2	0.00	0.00	0.00	
16,700.0	89.72	270.79	7,113.2	-488.5	-8,328.1	8,342.0	0.00	0.00	0.00	
16,800.0	89.72	270.79	7,113.6	-487.2	-8,428.0	8,441.8	0.00	0.00	0.00	
16,900.0	89.72	270.79	7,114.1	-485.8	-8,528.0	8,541.6	0.00	0.00	0.00	
17,000.0	89.72	270.79	7,114.6	-484.4	-8,628.0	8,641.4	0.00	0.00	0.00	
17,100.0	89.72	270.79	7,115.1	-483.1	-8,728.0	8,741.2	0.00	0.00	0.00	
17,200.0	89.72	270.79	7,115.6	-481.7	-8,828.0	8,841.0	0.00	0.00	0.00	
17,300.0	89.72	270.79	7,116.1	-480.3	-8,928.0	8,940.8	0.00	0.00	0.00	
17,400.0	89.72	270.79	7,116.6	-478.9	-9,028.0	9,040.6	0.00	0.00	0.00	
17,500.0	89.72	270.79	7,117.1	-477.6	-9,128.0	9,140.4	0.00	0.00	0.00	
17,600.0	89.72	270.79	7,117.5	-476.2	-9,228.0	9,240.2	0.00	0.00	0.00	
17,700.0	89.72	270.79	7,118.0	-474.8	-9,328.0	9,340.0	0.00	0.00	0.00	
17,800.0	89.72	270.79	7,118.5	-473.5	-9,427.9	9,439.8	0.00	0.00	0.00	
17,898.5	89.72	270.79	7,119.0	-472.1	-9,526.4	9,538.1	0.00	0.00	0.00	
GF P-34-33HN PBHL										

Design Targets										
Target Name	Dip Angle (°)	Dip Dir. (°)	TVD (usft)	+N/-S (usft)	+E/-W (usft)	Northing (usft)	Easting (usft)	Latitude	Longitude	
GF P-34-33HN LP	0.00	0.00	7,069.0	-612.7	732.5	1,436,534.99	3,238,979.40	40° 31' 42.632 N	104° 38' 25.058 W	
- hit/miss target										
- Shape										
- Point										
GF P-34-33HN PBHL	0.00	0.00	7,119.0	-472.1	-9,526.4	1,436,576.46	3,228,719.63	40° 31' 44.004 N	104° 40' 37.916 W	
- plan hits target center										
- Point										