



Well Services  
E - L I N E

RADIAL CEMENT BOND  
GAMMA RAY  
CCL LOG

Company SRC ENERGY INC.		Company SRC ENERGY INC.					
Well KORI J 19-14		Well KORI J 19-14					
Field WATTENBERG		Field WATTENBERG					
County WELD		County WELD					
State CO		State CO					
Location: API # : 05-123-22719 SE/SW LAT. 40.37995 LONG. -104.8243		Other Services					
SEC 19 TWP 5N RGE 66W		Elevation					
Permanent Datum GL Log Measured From K.B. OF 16' Drilling Measured From KELLY BUSHING		K.B. 5,037' D.F. 5,036' G.L. 5,021'					
Date	8-2-2019						
Run Number	ONE						
Depth Driller	7,686'						
Depth Logger	7,454'						
Bottom Logged Interval	7,450'						
Top Log Interval	SURFACE						
Open Hole Size	7.875"						
Type Fluid	WATER						
Density / Viscosity	1.0						
Max. Recorded Temp.	219.2 °F						
Estimated Cement Top	6,721'						
Time Well Ready	ON ARRIVAL						
Time Logger on Bottom	N/A						
Equipment Number	3813						
Location	GREELEY, CO						
Recorded By	J.KERR						
Witnessed By	N. BREHMER						
Borehole Record		Tubing Record					
Run Number	Bit	From	To	Size	Weight	From	To
Casing Record	Size		Wgt/Ft		Top		Bottom
Surface String	8.625"		24#		SURFACE		532"
Prot. String							
Production String	4.5"		11.6#		SURFACE		7,665'
Liner							

<<< Fold Here >>>



All interpretations are opinions based on inferences from electrical or other measurements and we cannot and do not guarantee the accuracy or correctness of any interpretation, and we shall not, except in the case of gross or willful negligence on our part, be liable or responsible for any loss, costs, damages, or expenses incurred or sustained by anyone resulting from any interpretation made by any of our officers, agents or employees. These interpretations are also subject to our general terms and conditions set out in our current Price Schedule.

Comments

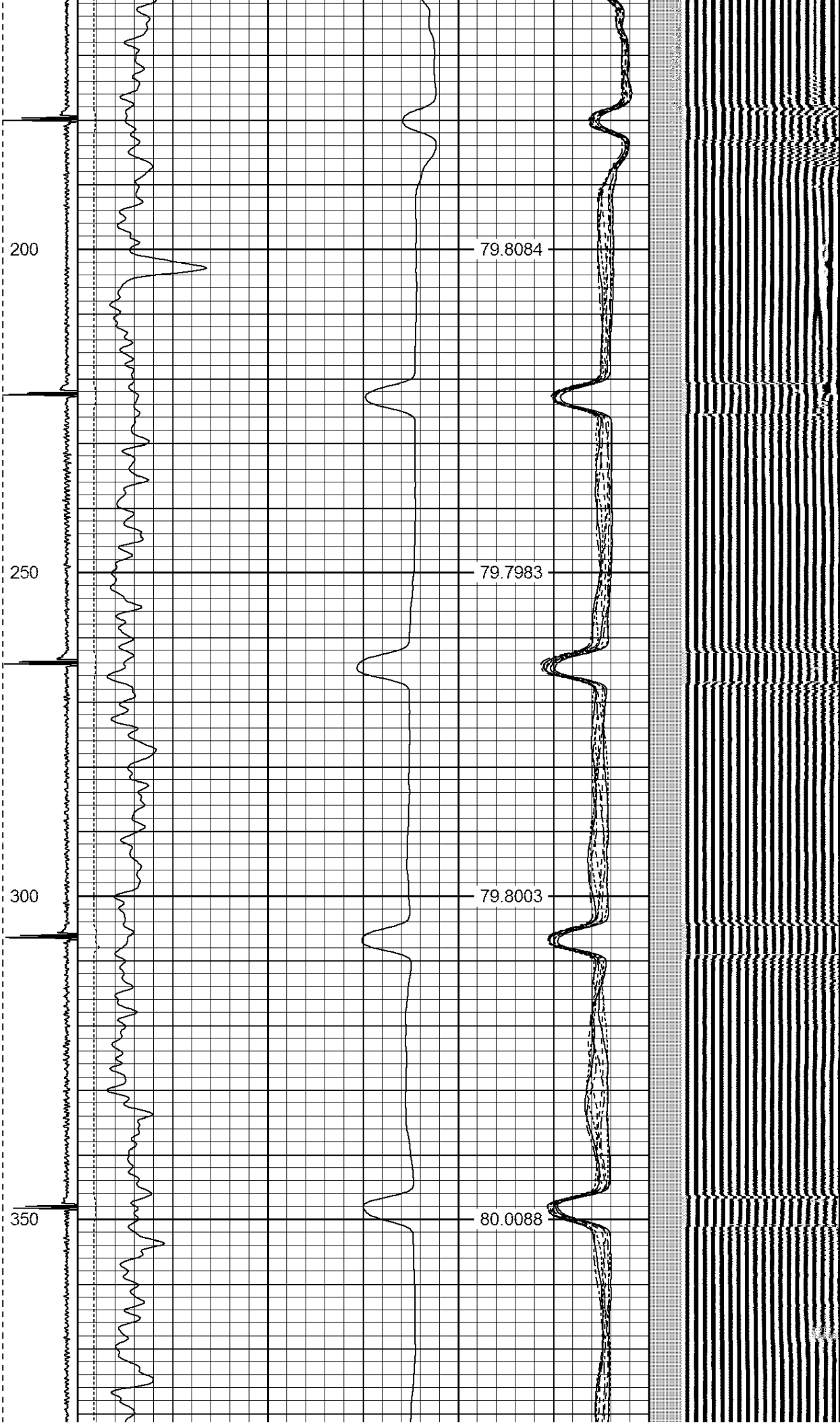
RAN CBL TO VERIFY CEMENT COVERAGE  
CORRELATED TO NUEX CBL RAN ON 1-3-06

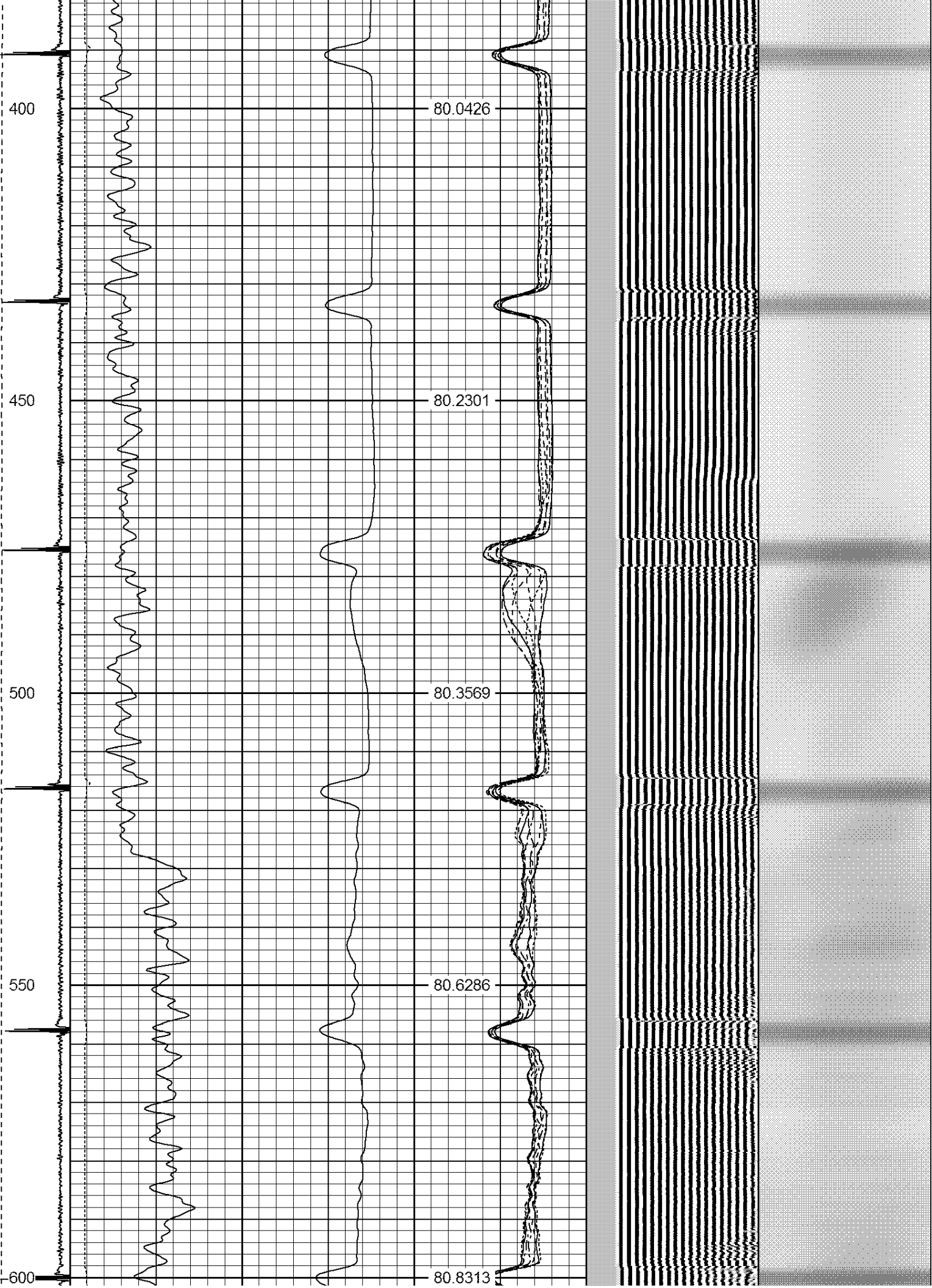
Sensor	Offset (ft)	Schematic	Description	Len (ft)	OD (in)	Wt (lb)
HEAD/VOI	16.13		1_4	1.00	1.36	5.00

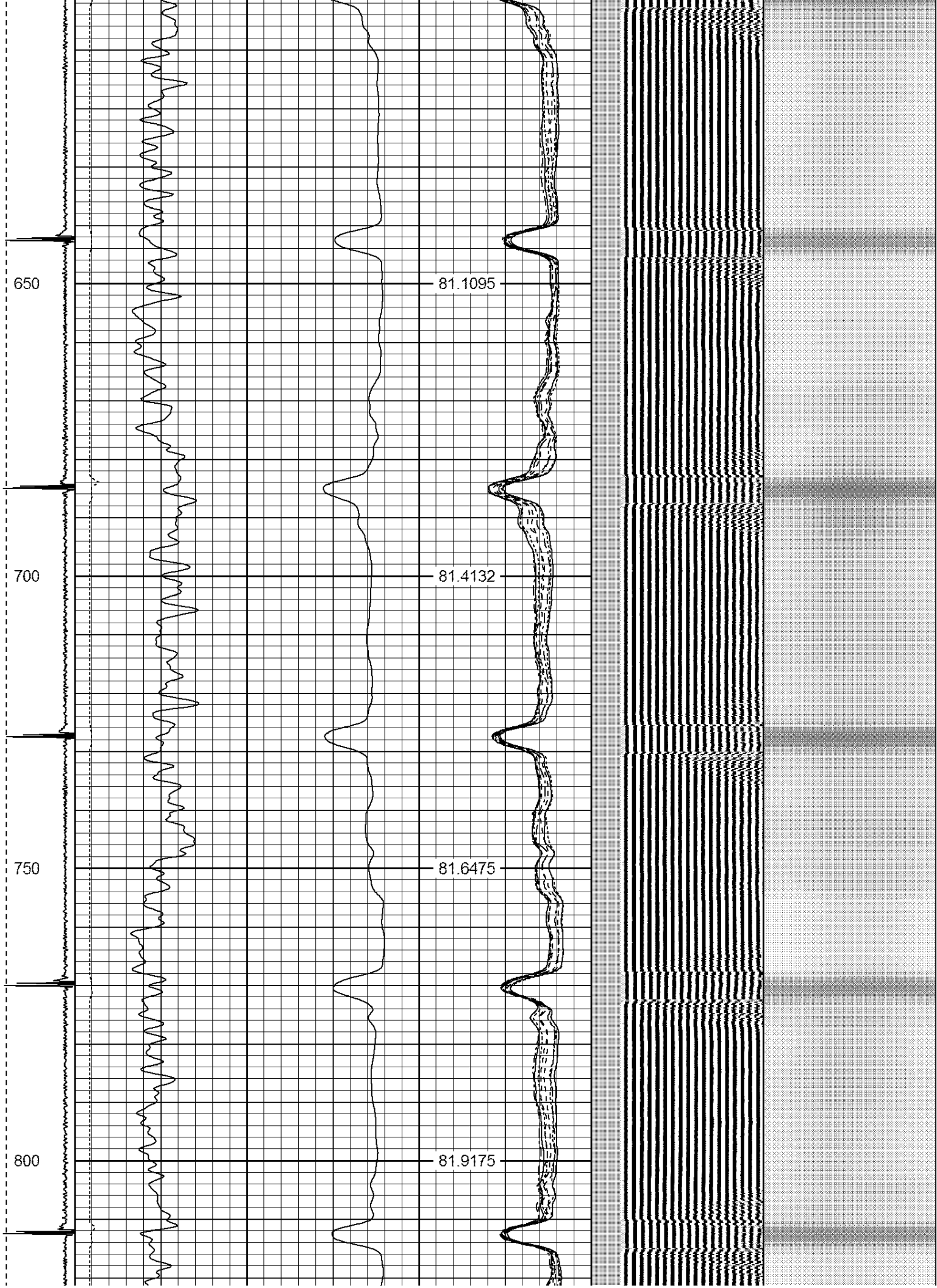
HEADVOLT	10.15					
IntTemp	14.71					
WVF3FT	11.46					
WVFCAL	11.46					
WVFS1	11.46					
WVFS2	11.46					
WVFS3	11.46					
WVFS4	11.46					
WVFS5	11.46					
WVFS6	11.46					
WVFS7	11.46					
WVFS8	11.46					
WVF5FT	10.46					
CNLSC	6.00					
CNSSC	5.17					
CCL	3.64					
GR	0.90					
<div> <div> Dataset: Total Length: Total Weight: O.D. </div> <div> src nate.db: field/well/run1/pass28 17.13 ft 165.00 lb 2.75 in </div> </div>						

-9	CCL	1	200	TT (usec)	1000	0	AMP (mV)	100	0	AMPS1	100	200	VDL	1200	1	Cement Map	8	
LSPD (ft/min)	0		0	GR (GAPI)	200	0	AMPx5 (mV)	20	0	AMPS2	100			100				1
	200		200	GR (GAPI)	400				0	AMPS3	100							
0	250								0	AMPS4	100							
									0	AMPS5	100							
									0	AMPS6	100							
									0	AMPS7	100							
									0	AMPS8	100							
									IntTemp									
									(degF)									









850

82.177

900

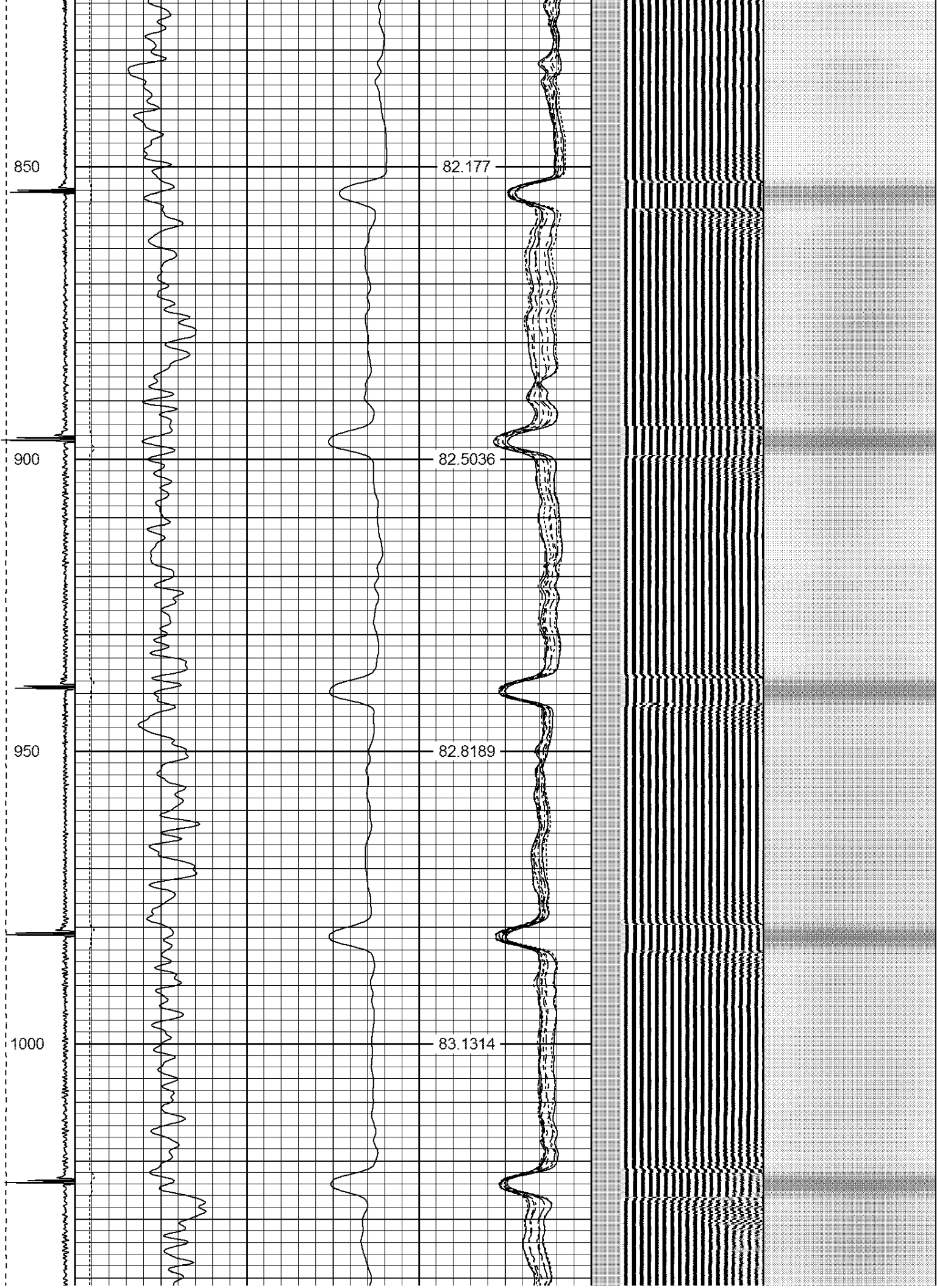
82.5036

950

82.8189

1000

83.1314



1050

83.3867

1100

83.6551

1150

83.7807

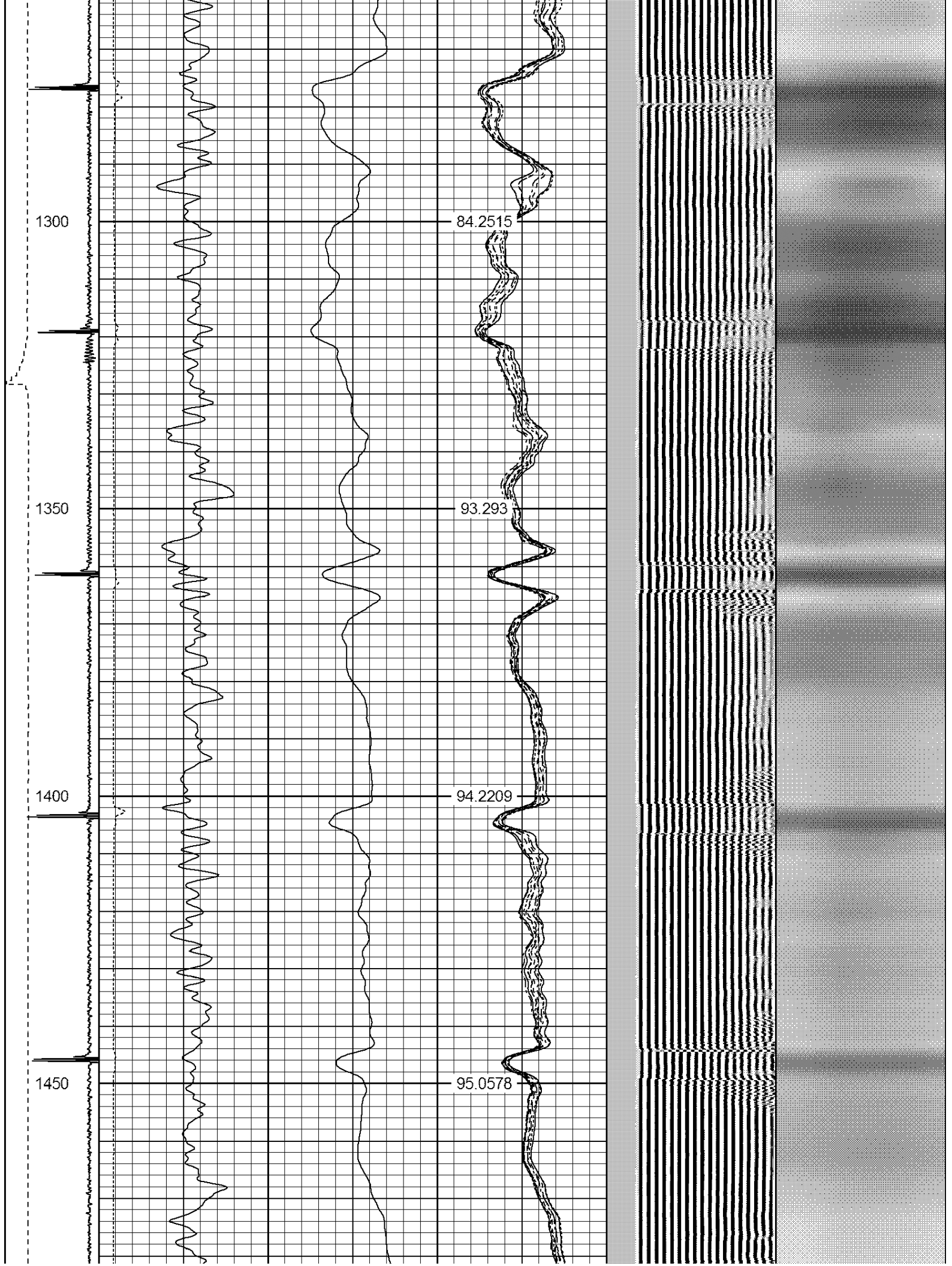
1200

84.0375

1250

84.1598







1750

101.222

1800

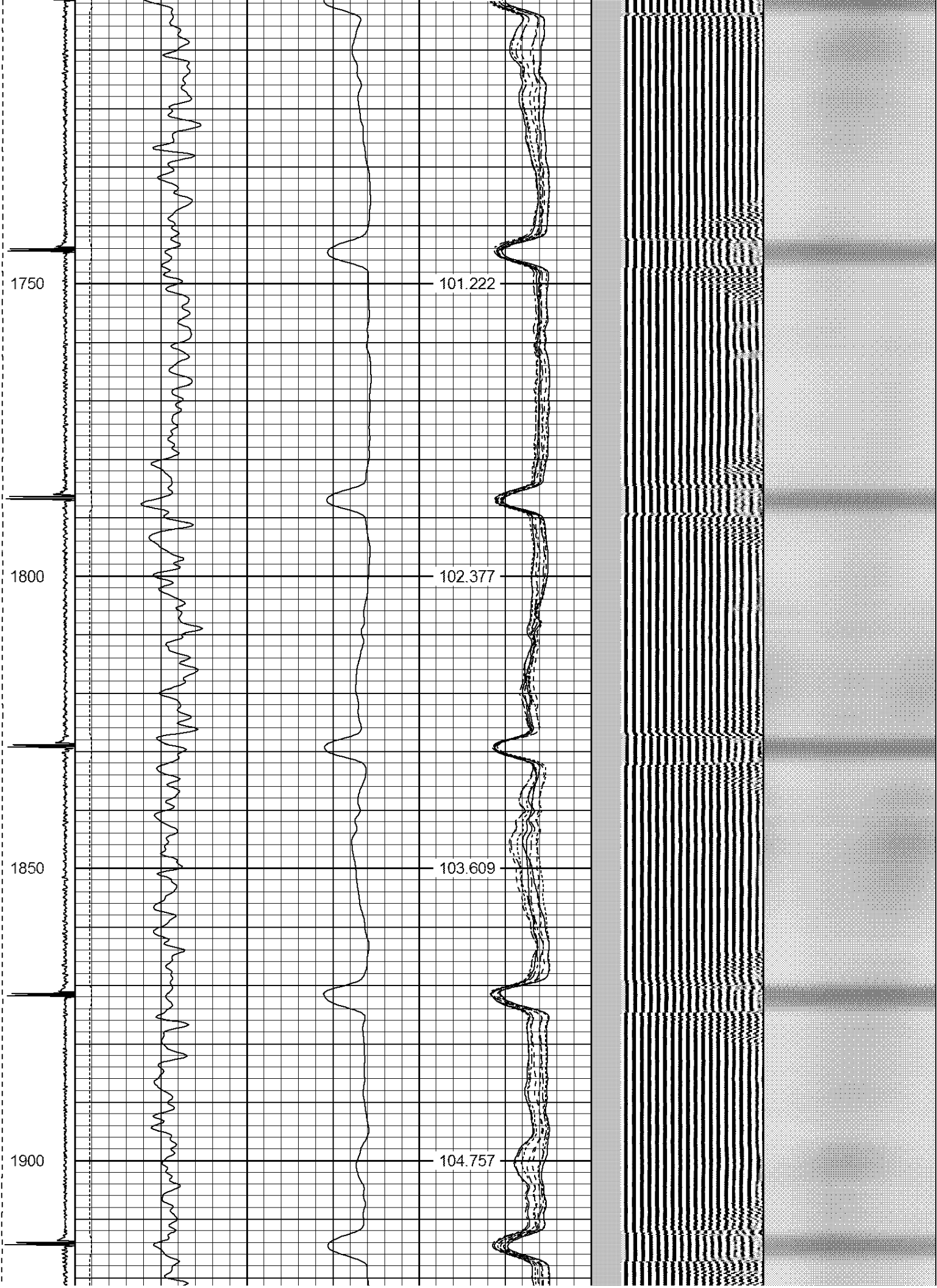
102.377

1850

103.609

1900

104.757



1950

105.994

2000

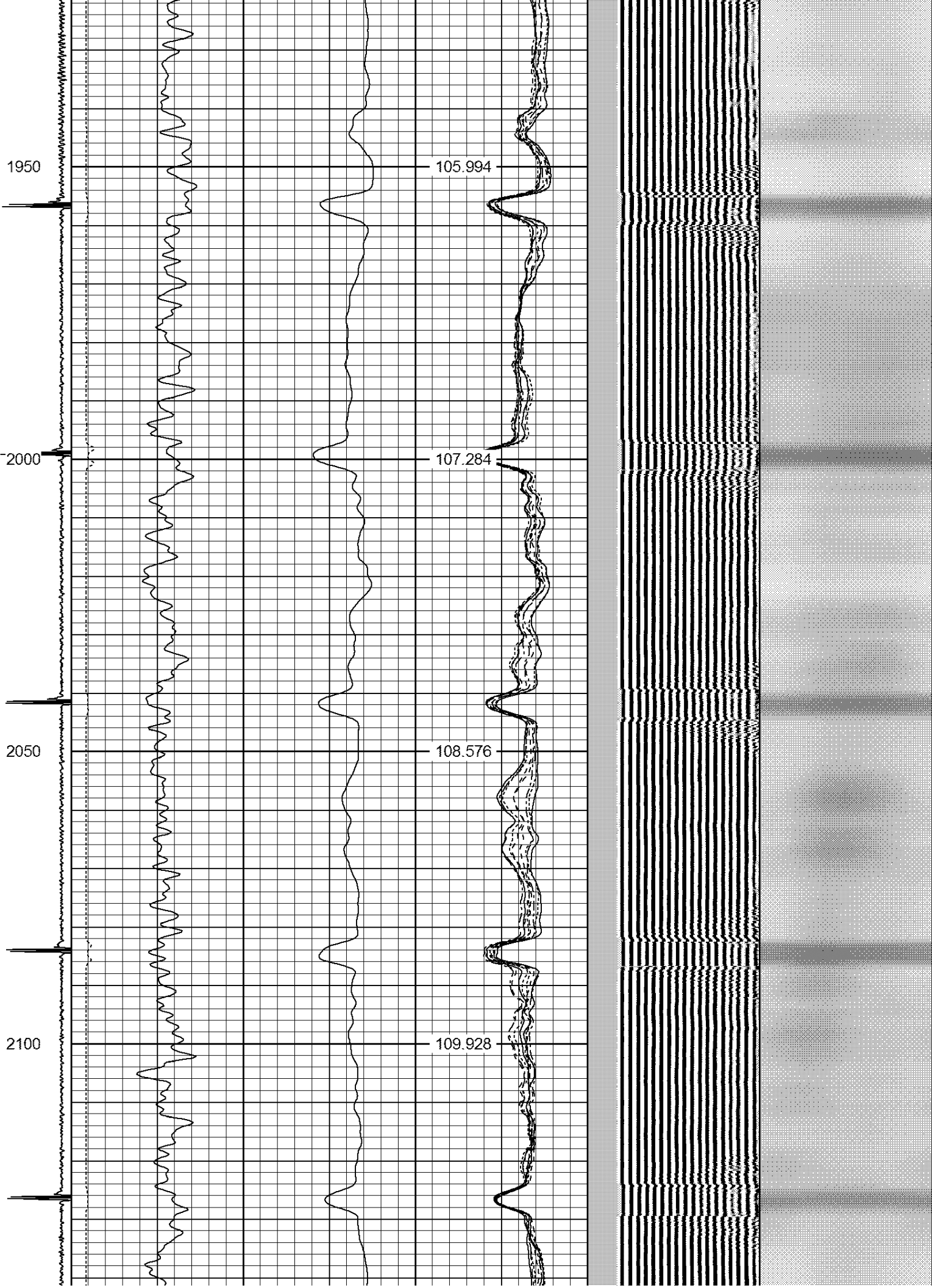
107.284

2050

108.576

2100

109.928



2150

111.266

2200

112.683

2250

114.242

2300

115.603

2350

117.185



2400

118.687

2450

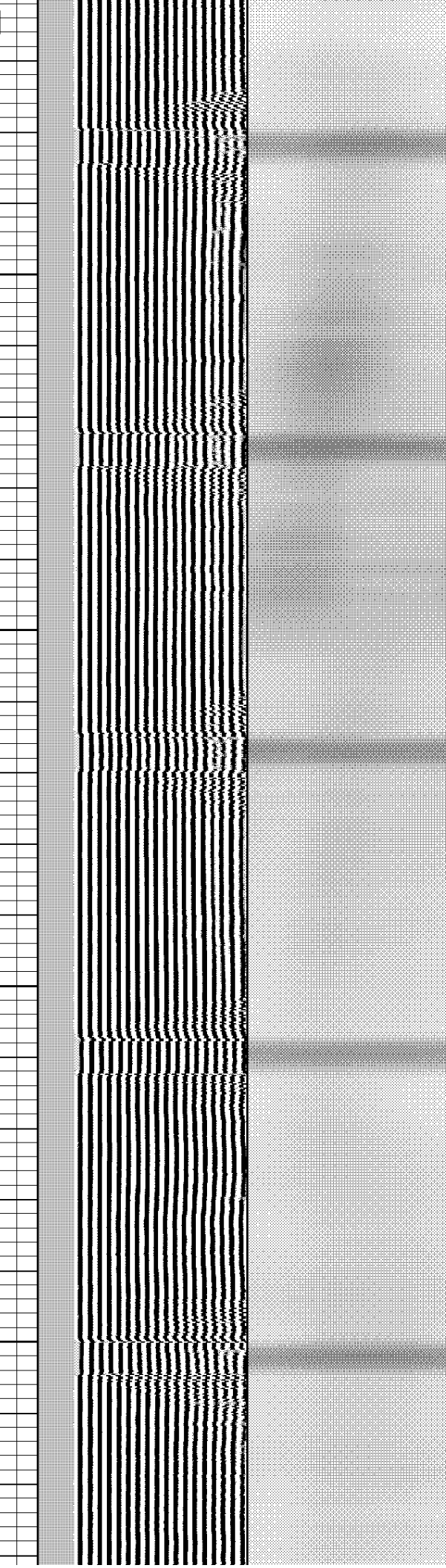
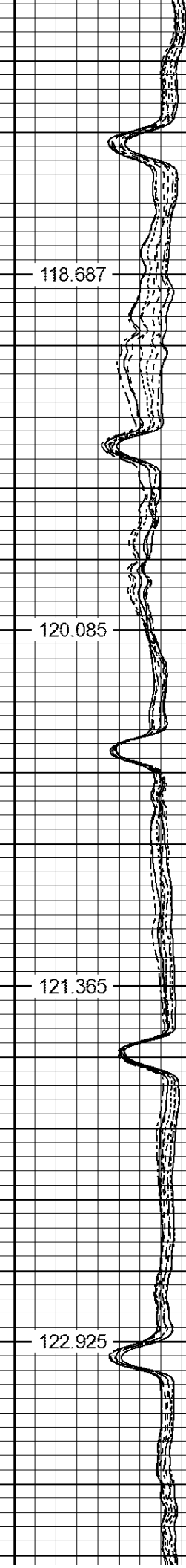
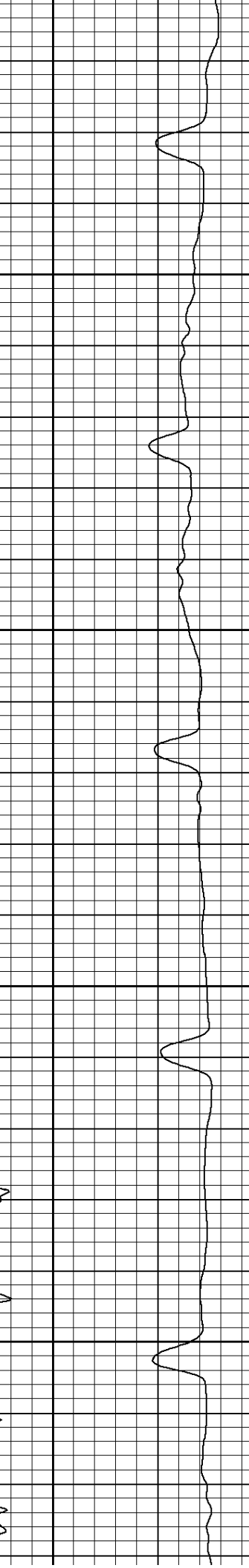
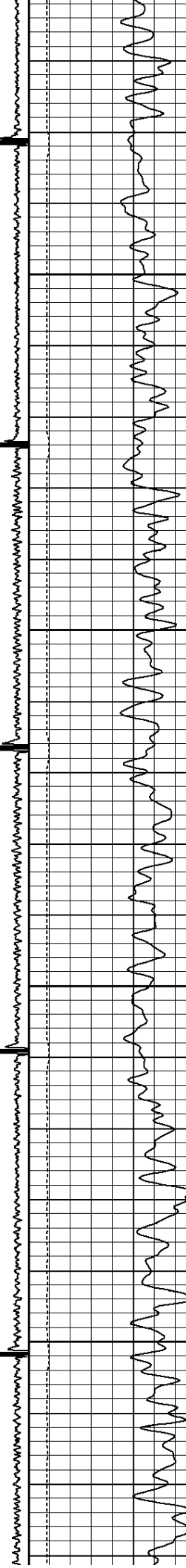
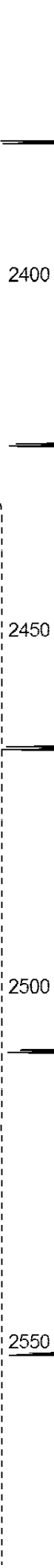
120.085

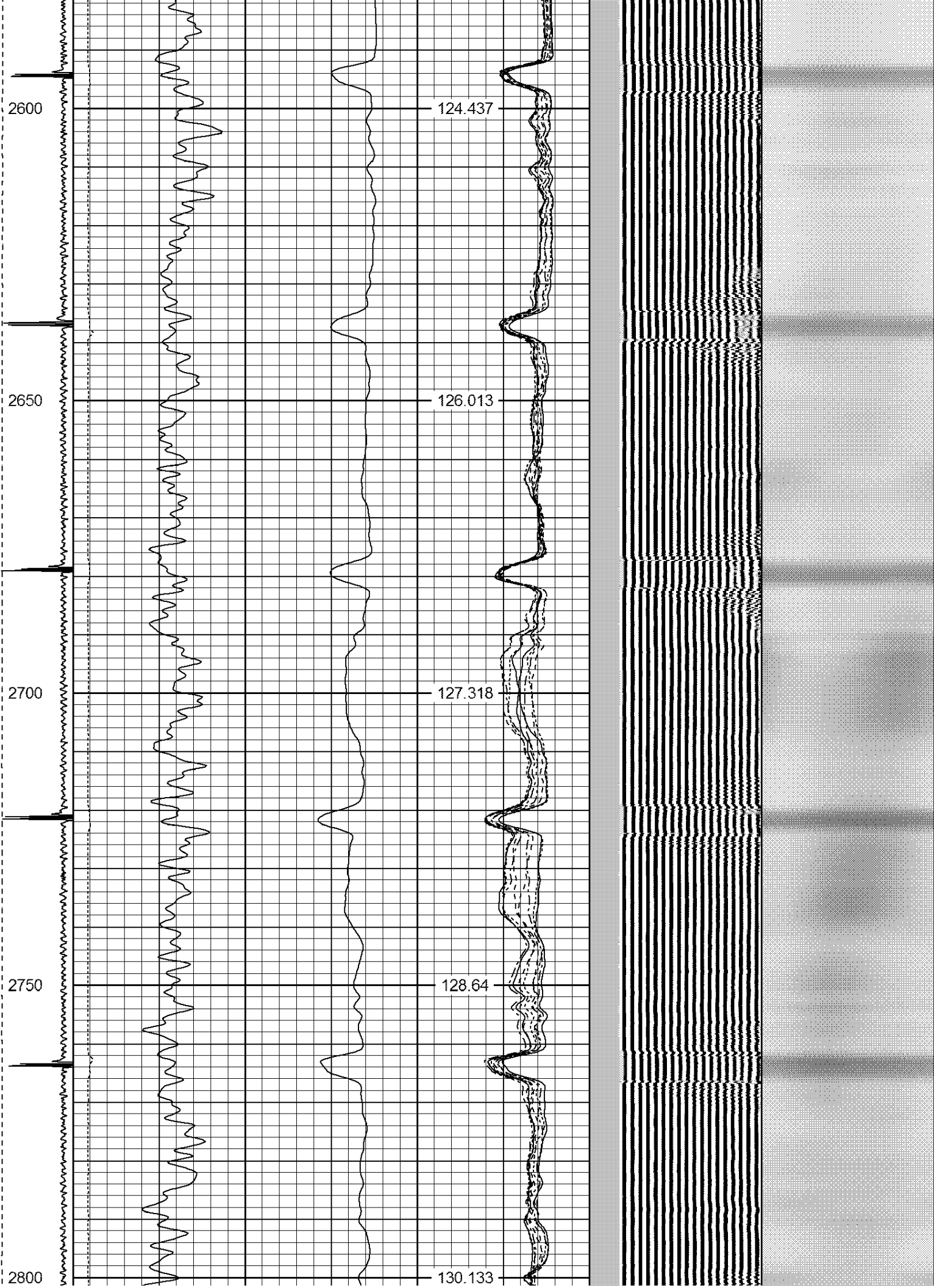
2500

121.365

2550

122.925







3050

137.567

3100

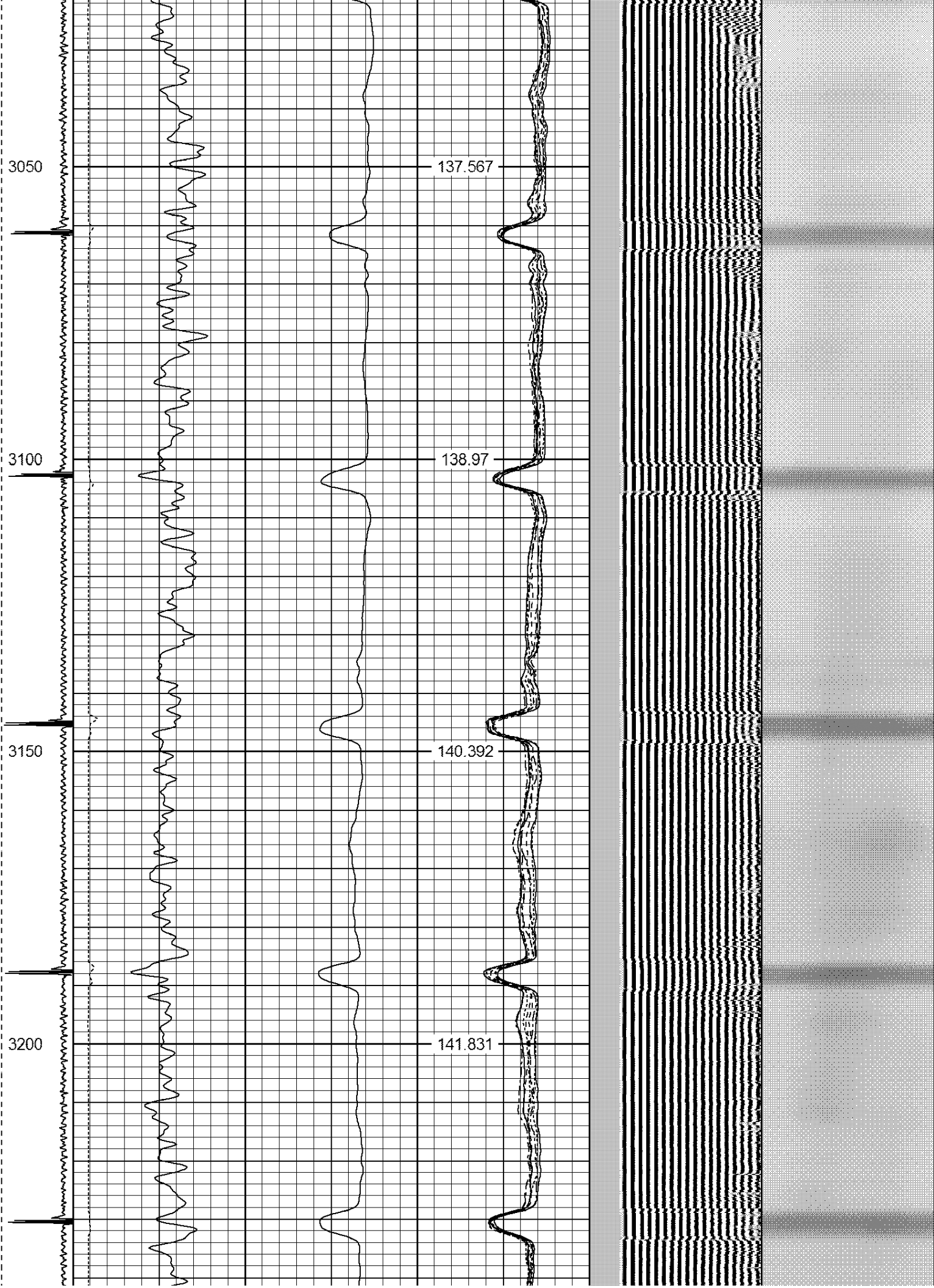
138.97

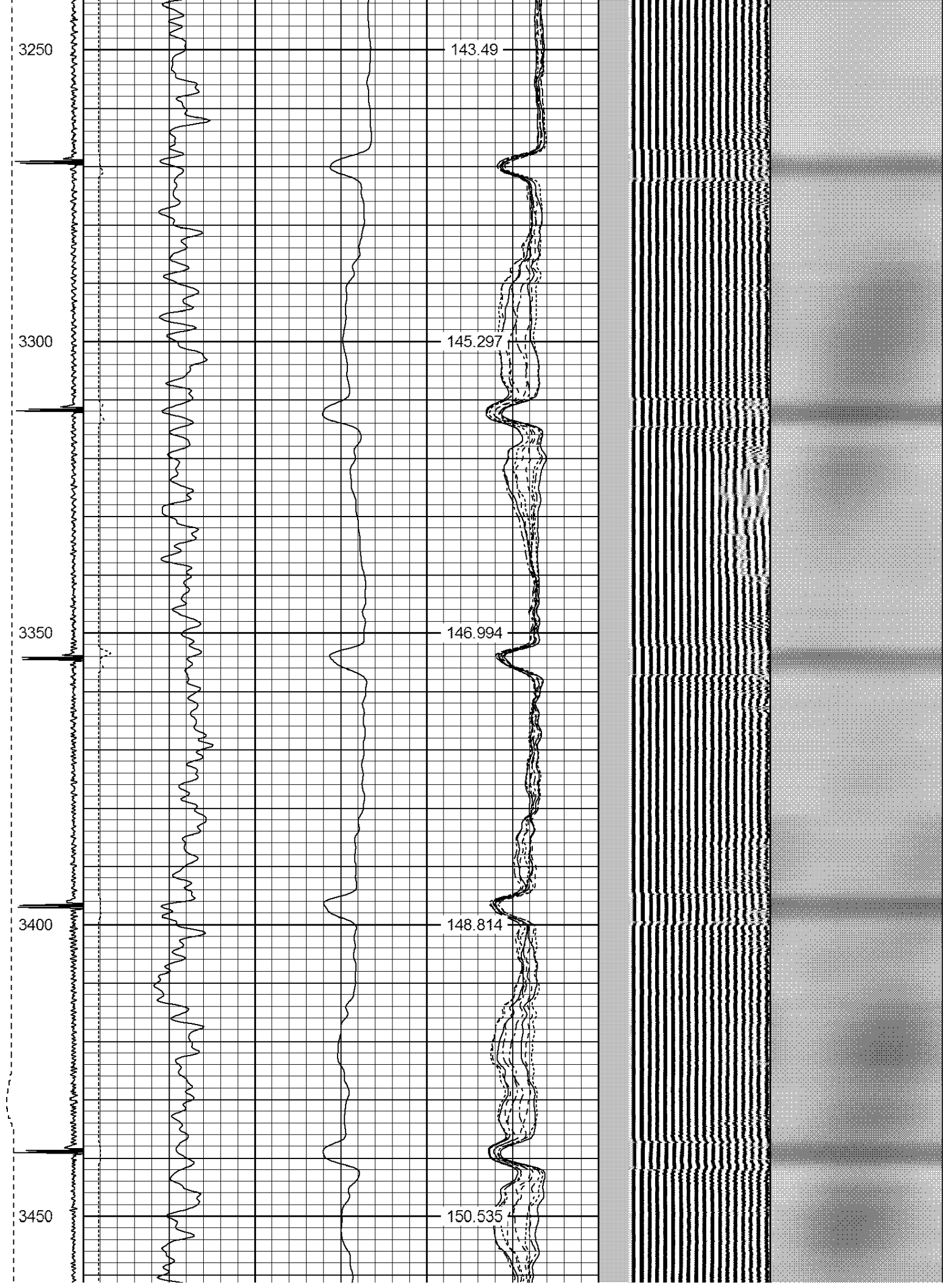
3150

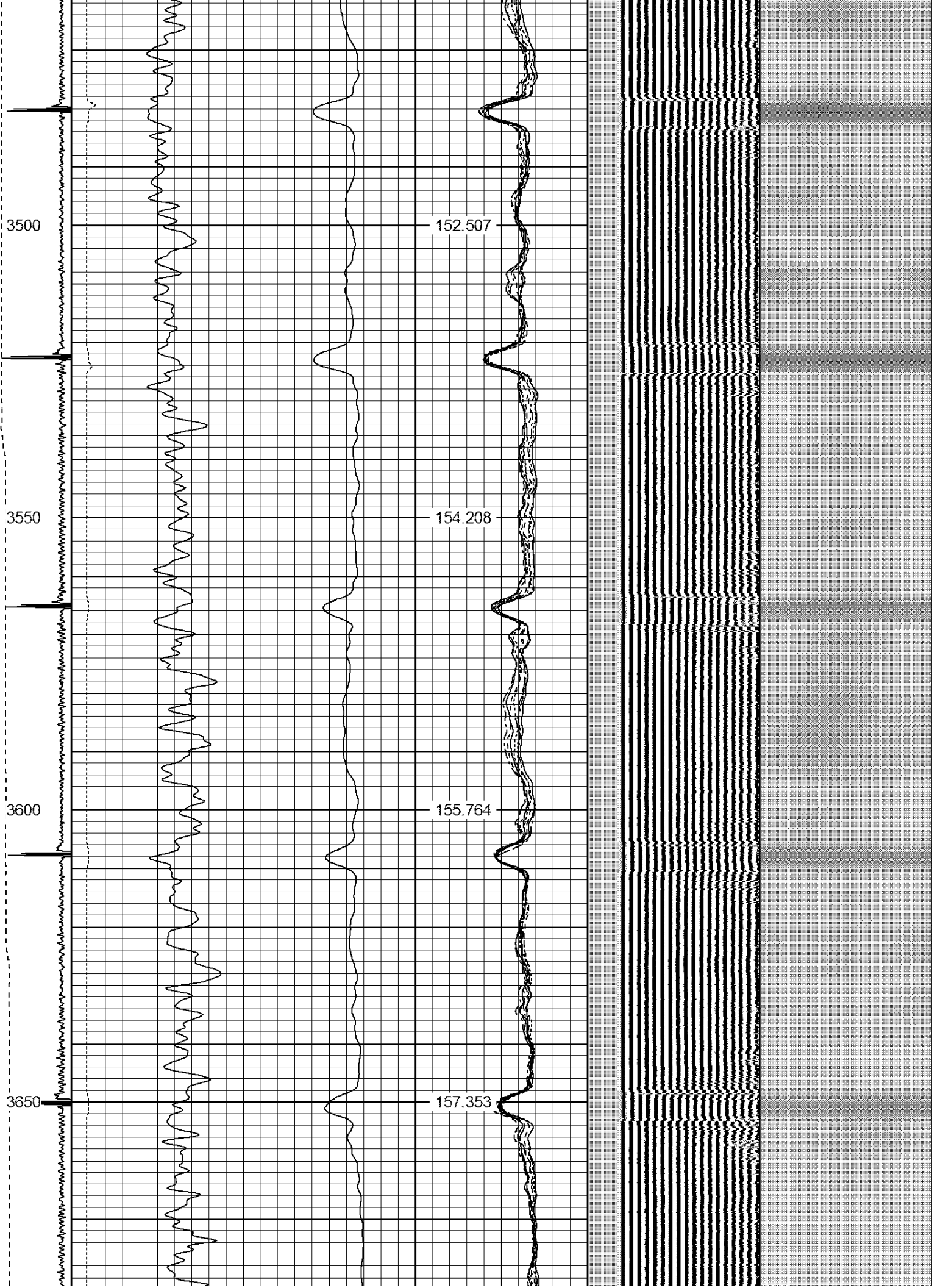
140.392

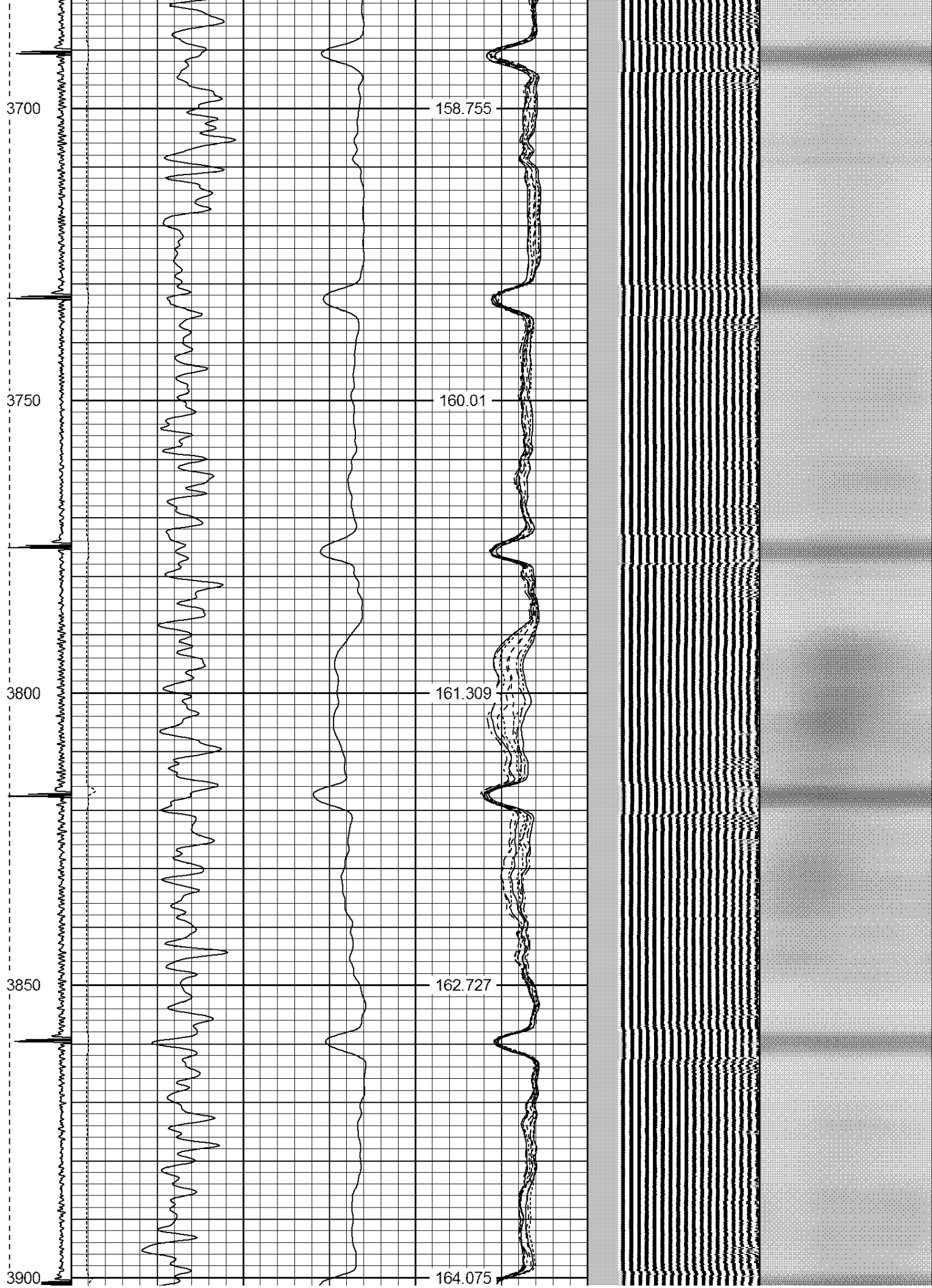
3200

141.831

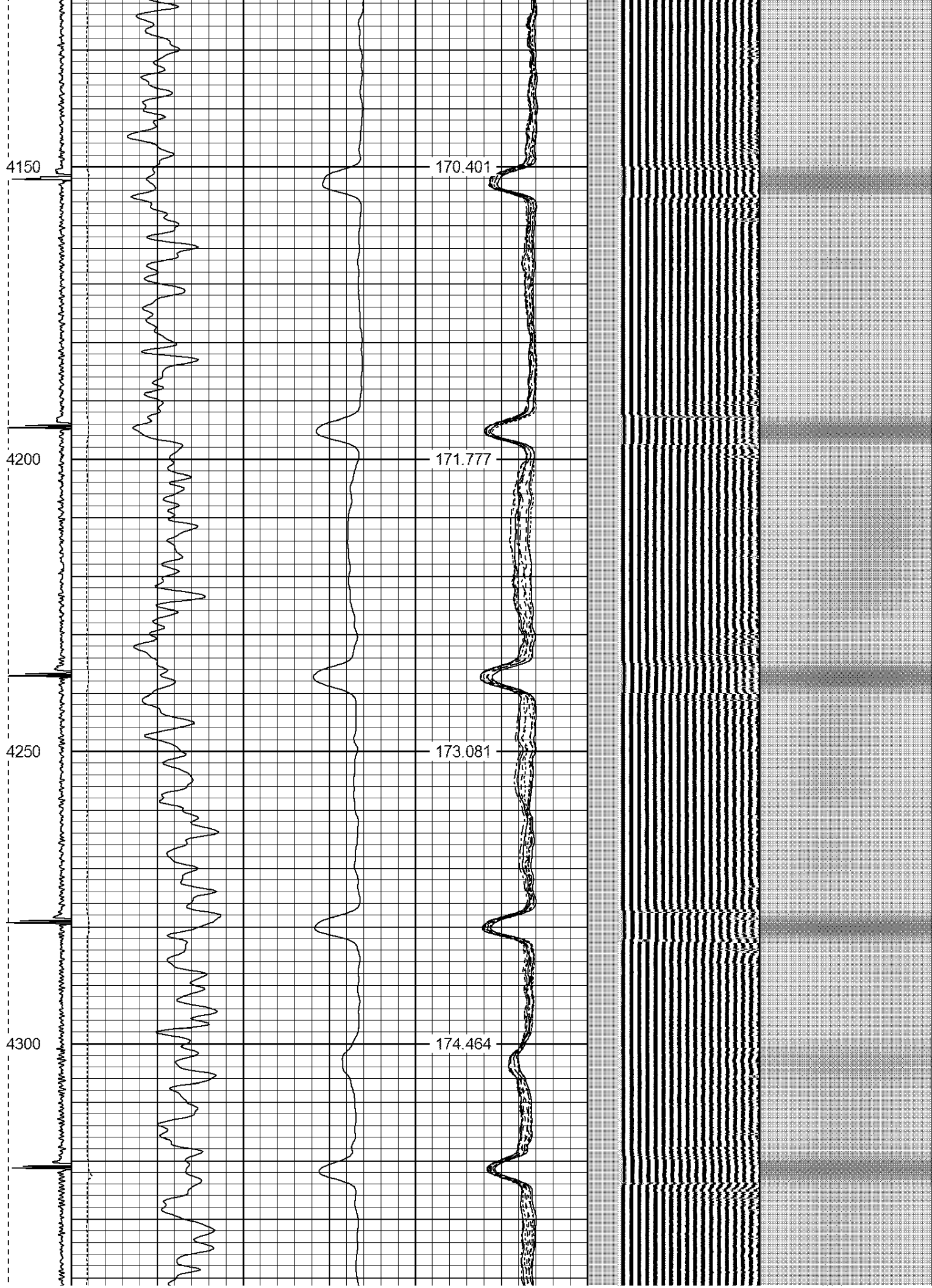


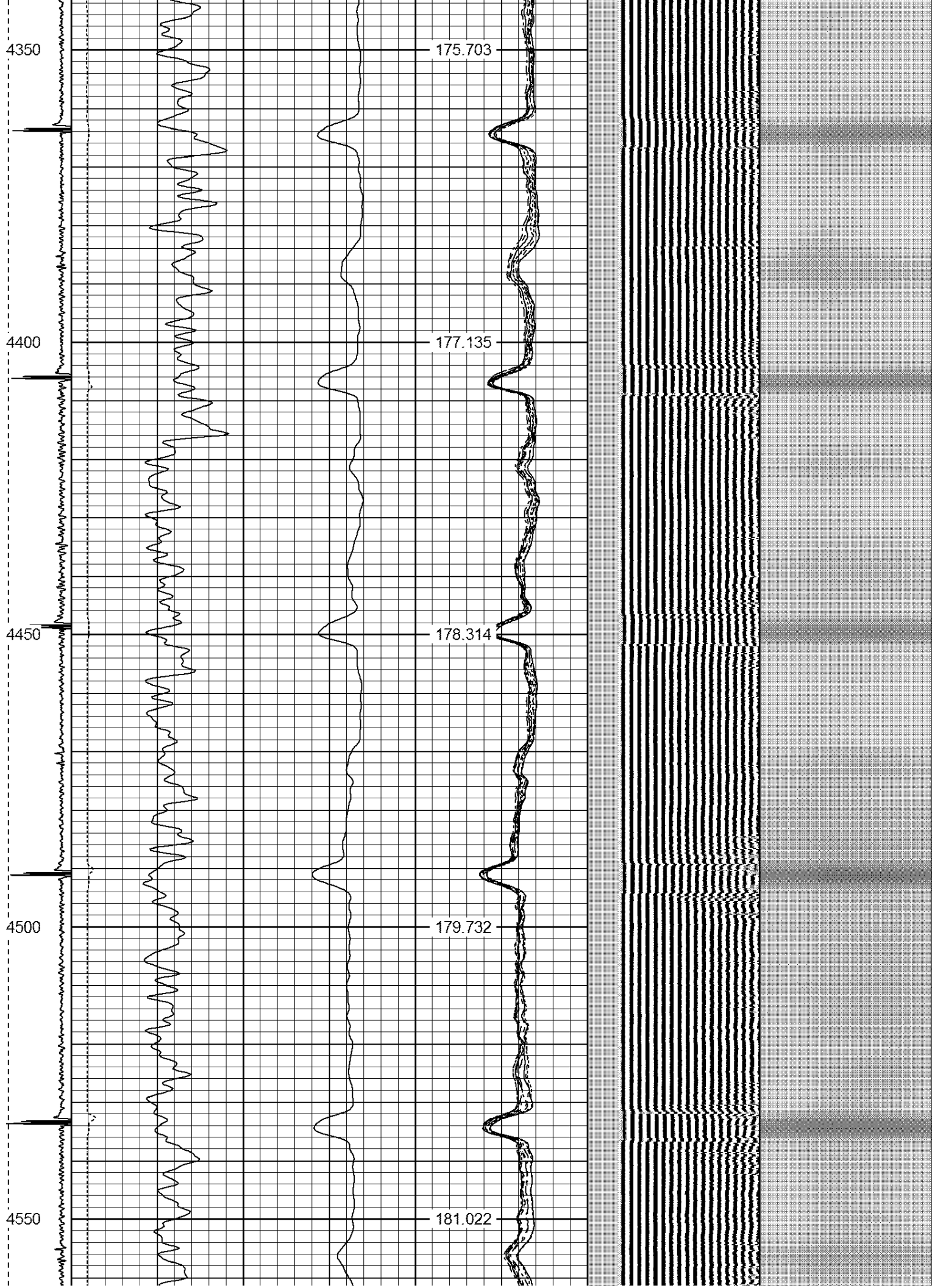


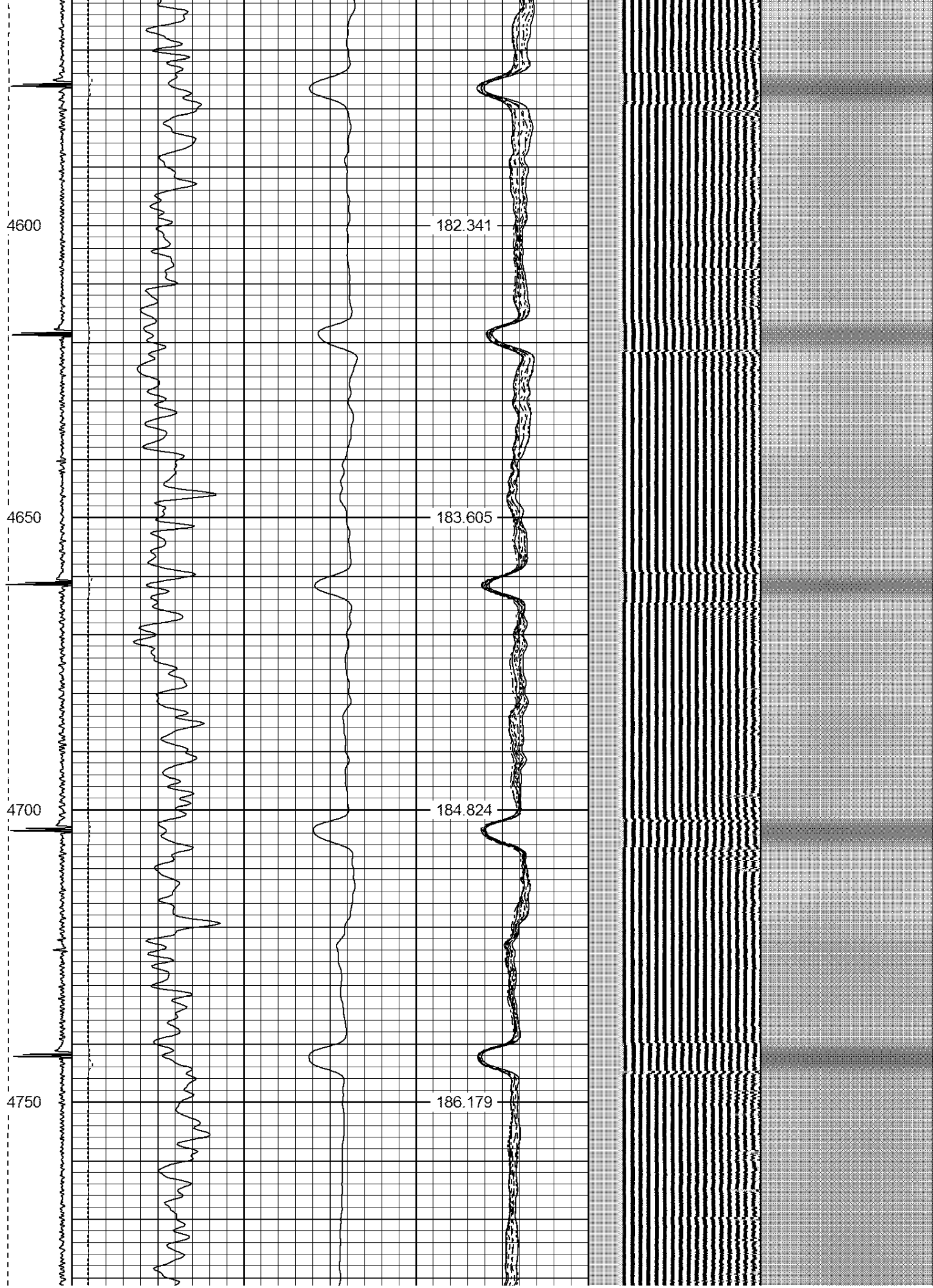


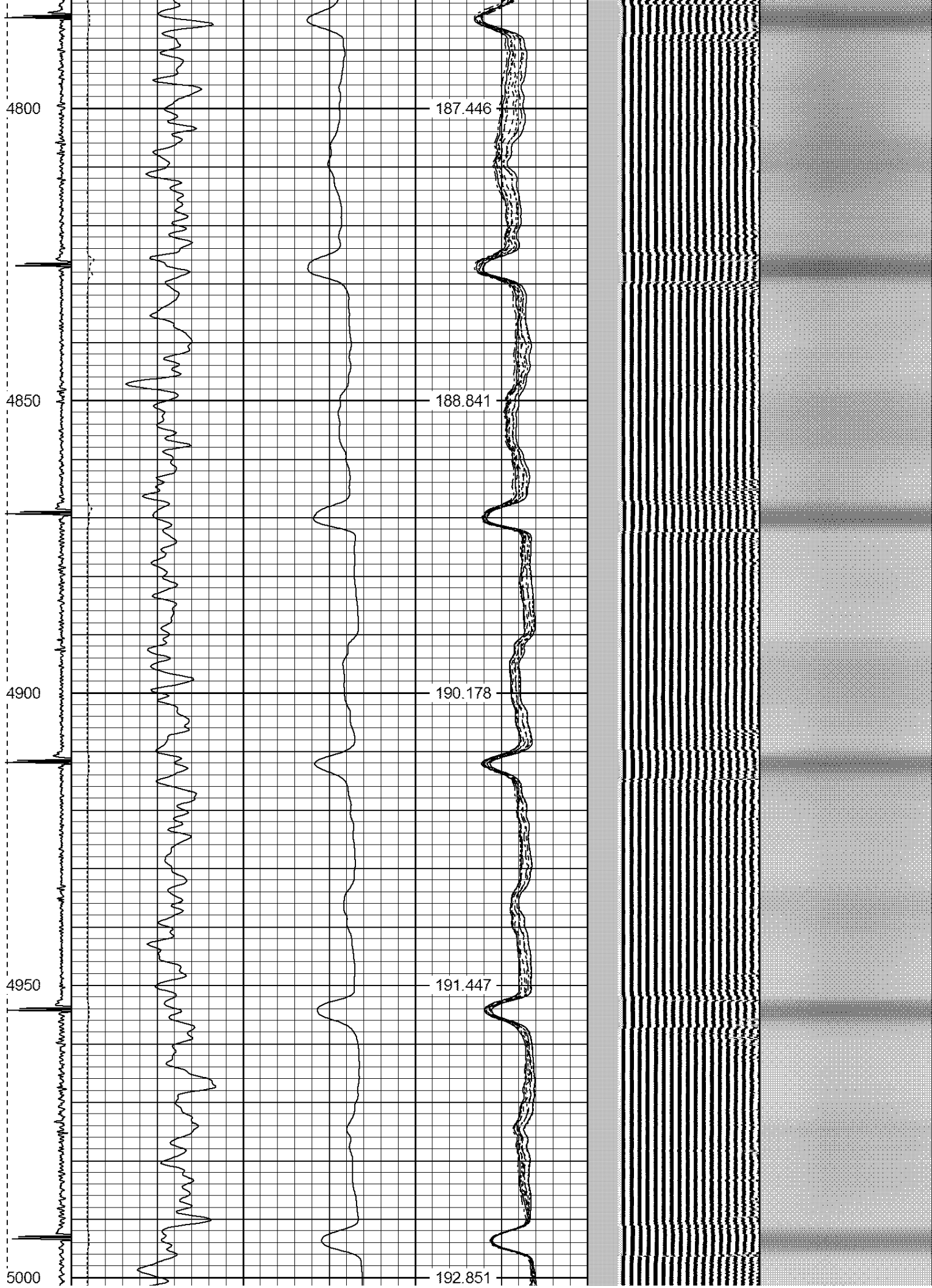


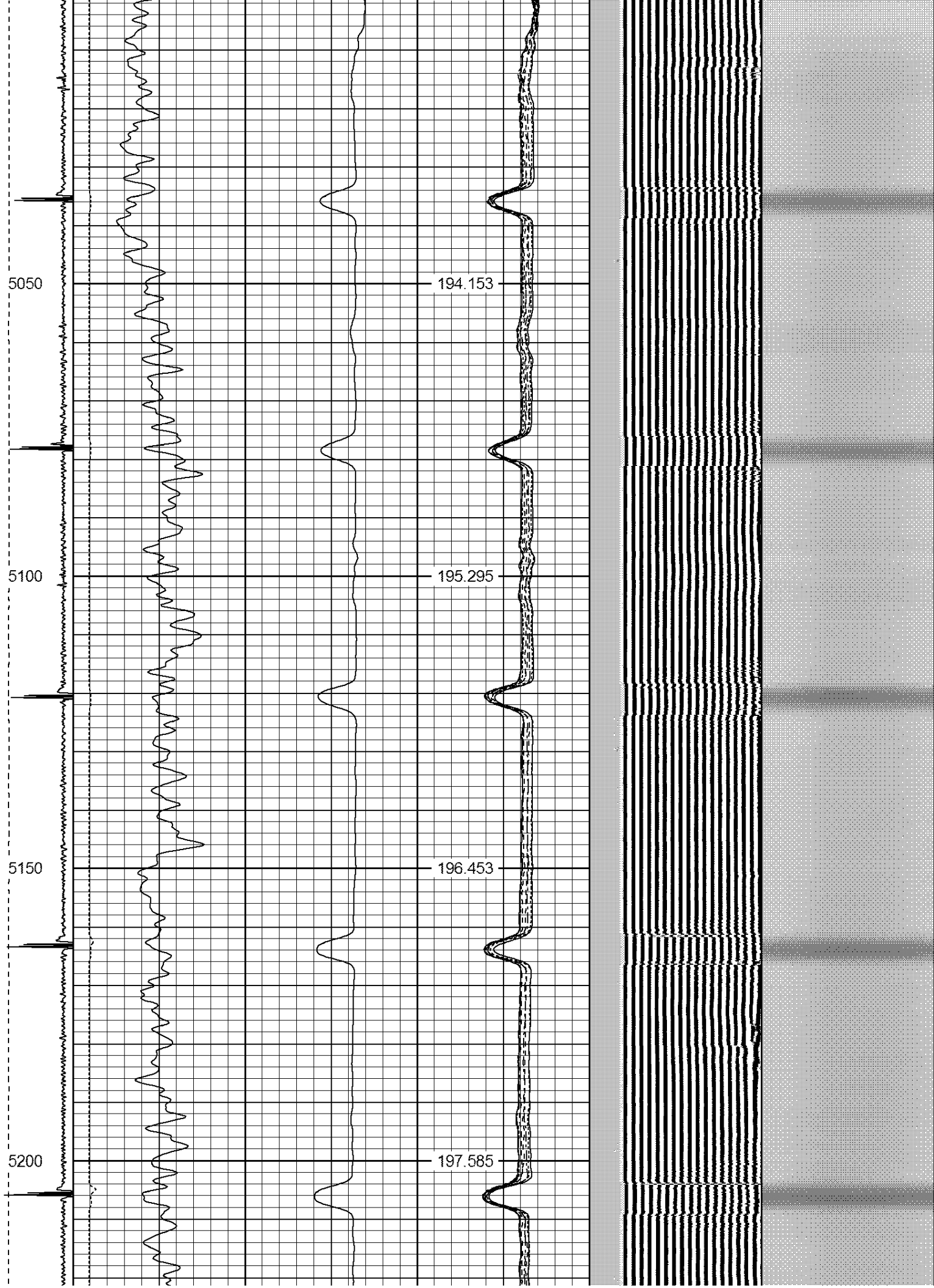


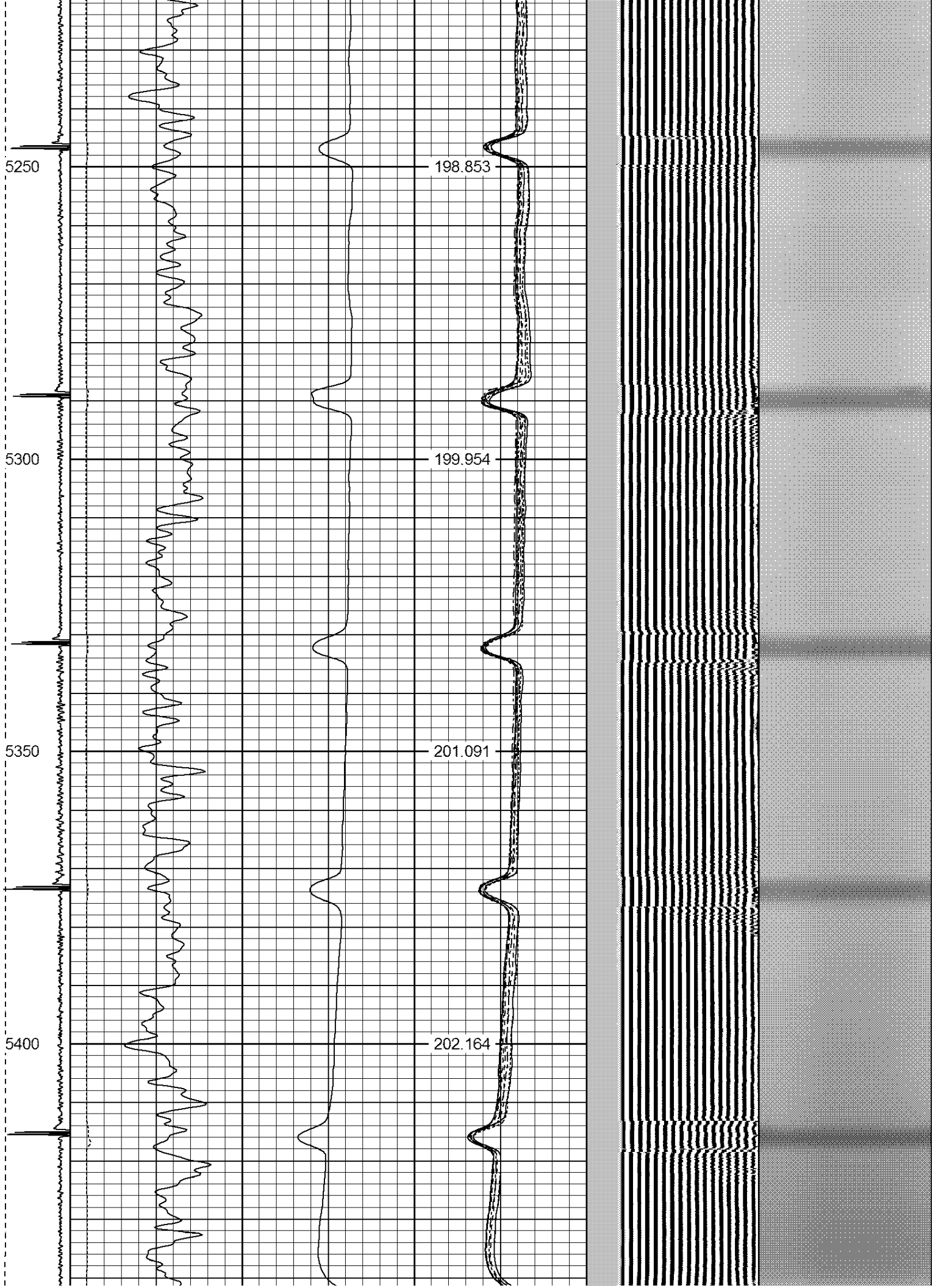


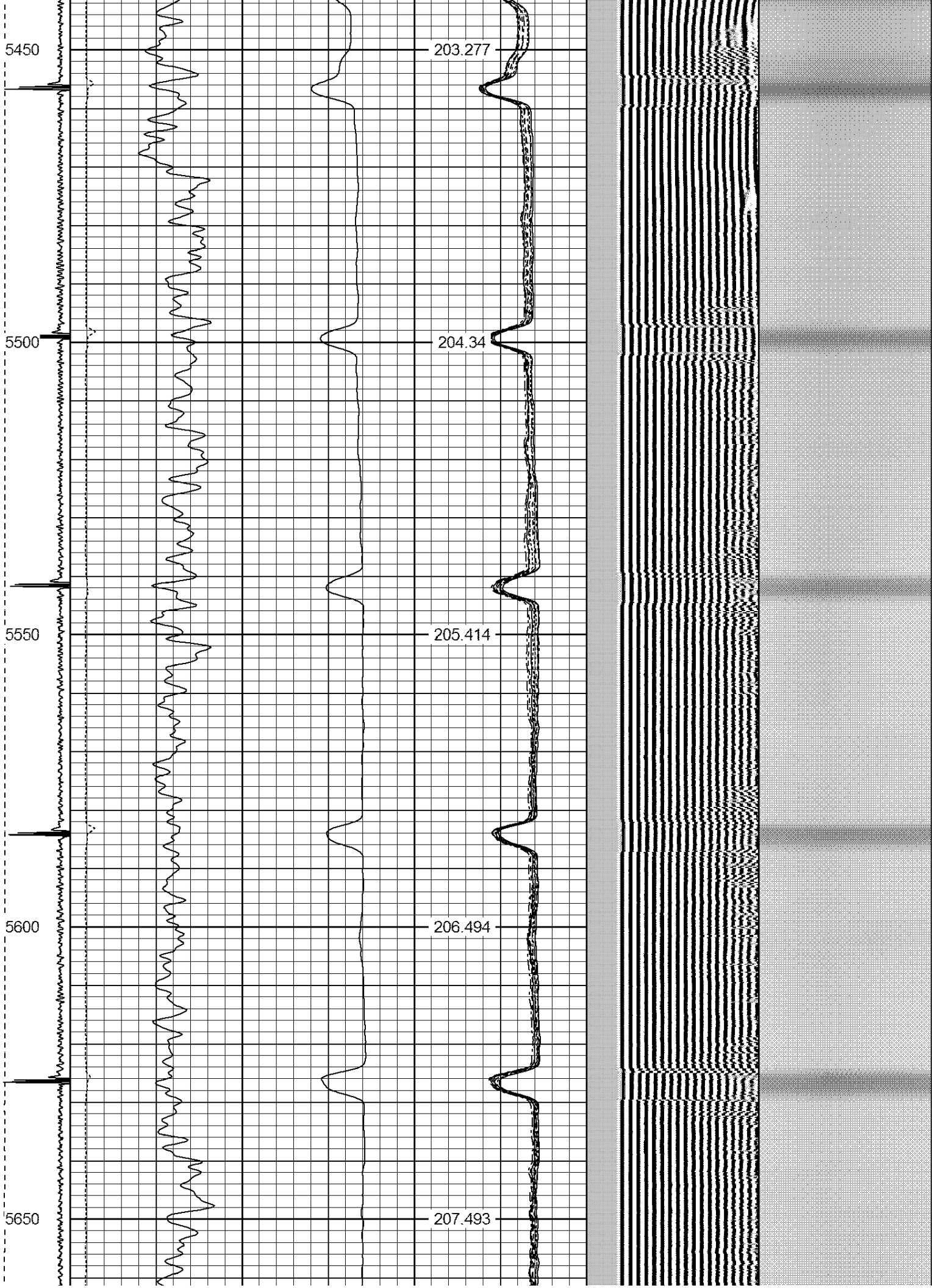


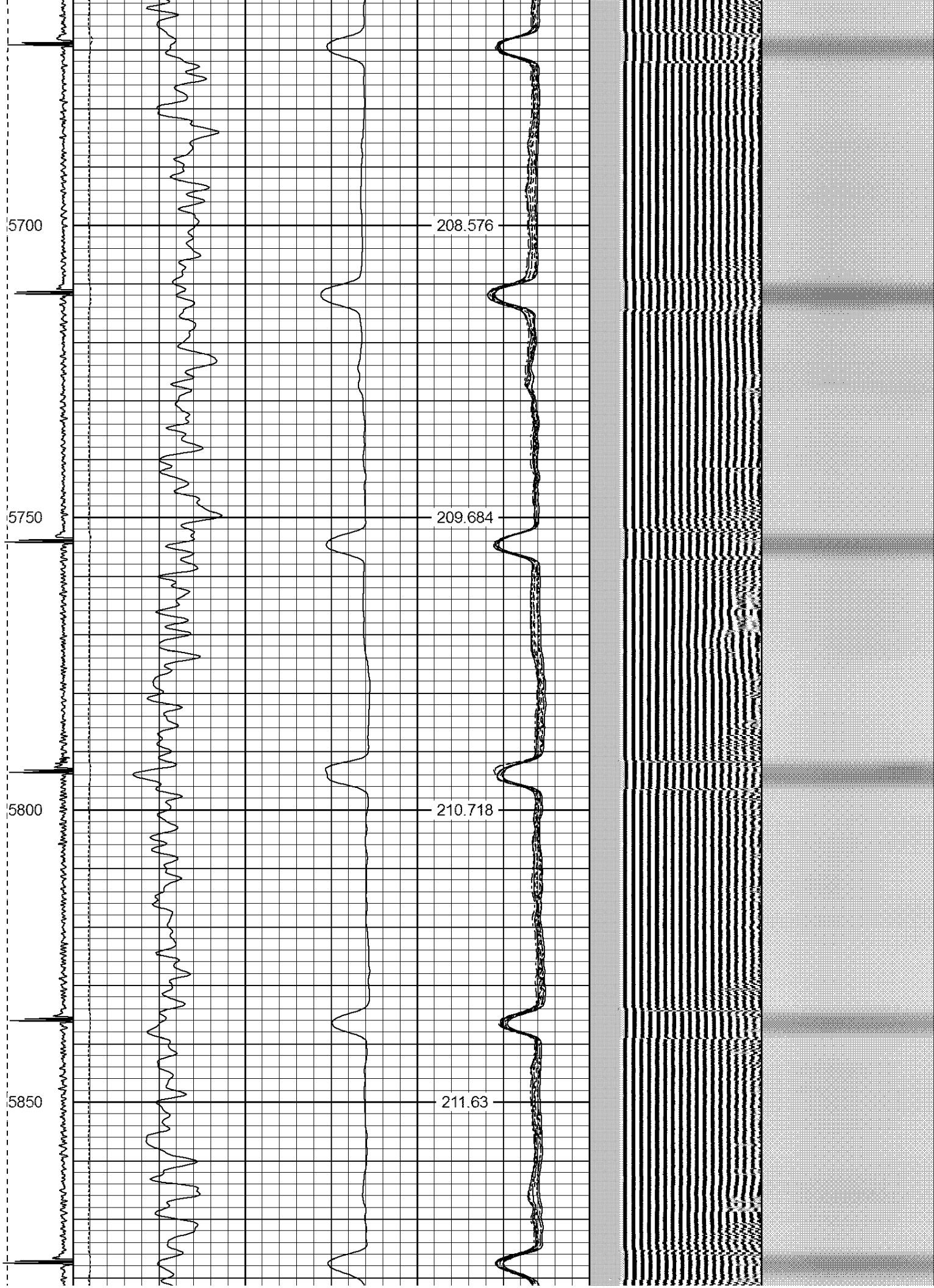












5900

212.623

5950

213.508

6000

214.411

6050

215.237

6100

215.942

