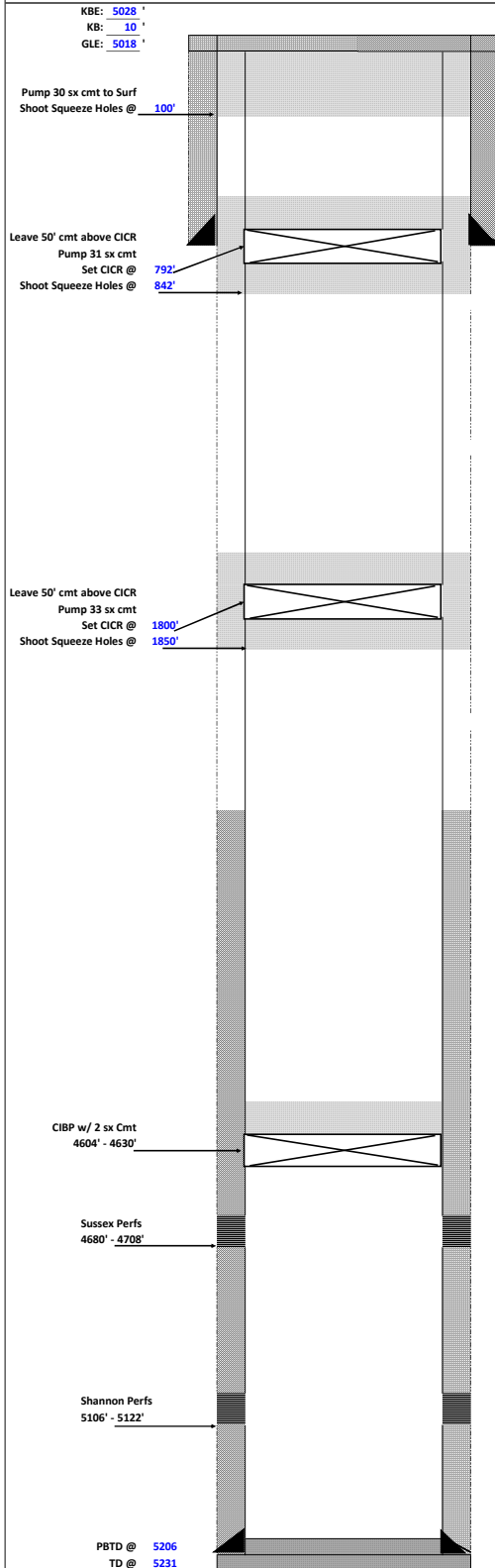


OPERATOR: K.P. Kauffman  
WELL: State #18  
FIELD: Spindle  
API #: 05-123-09438  
LEASE #: \_\_\_\_\_  
UIC #: \_\_\_\_\_

CNTY: Weld FTG: \_\_\_\_\_ IP GAS: \_\_\_\_\_  
STATE: CO Q-Q: SESE IP OIL: \_\_\_\_\_  
SPUD: 3/28/1978 SEC.: 36 IP WTR: \_\_\_\_\_  
COMP: 7/3/1978 TWS: 2N CUM GAS: \_\_\_\_\_  
STATUS: PR RGE: 68W CUM OIL: \_\_\_\_\_  
WBD DATE: 5/1/2020 BY: \_\_\_\_\_ LAST PROD: \_\_\_\_\_

PROPOSED P&A WELLBORE DIAGRAM



CASING RECORD

HOLE (in)	SIZE (in)	WT (lb/ft)	GRADE	TOP (ft)	BTM (ft)
12 1/4	8 5/8	24		0	792
7 7/8	4 1/2	10.5		0	5217

TUBING RECORD

COND: \_\_\_\_\_ DATE: \_\_\_\_\_

SIZE (in)	WT (lb/ft)	GRADE	TOP (ft)	TALLY (ft)	JTS
2 3/8				5143	

PERFORATION RECORD

ZONE	TOP (ft)	BTM (ft)	SPF
Sussex	4680	4708	2
Shannon	5106	5122	2

STIMULATION HISTORY

4680' - 5122': K-1 Frac, 117,000 gal fluid, 72,000# 20/40 mesh, 156,000# 10/20 mesh