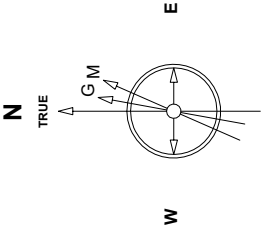


Great Western Operating Company, LLC

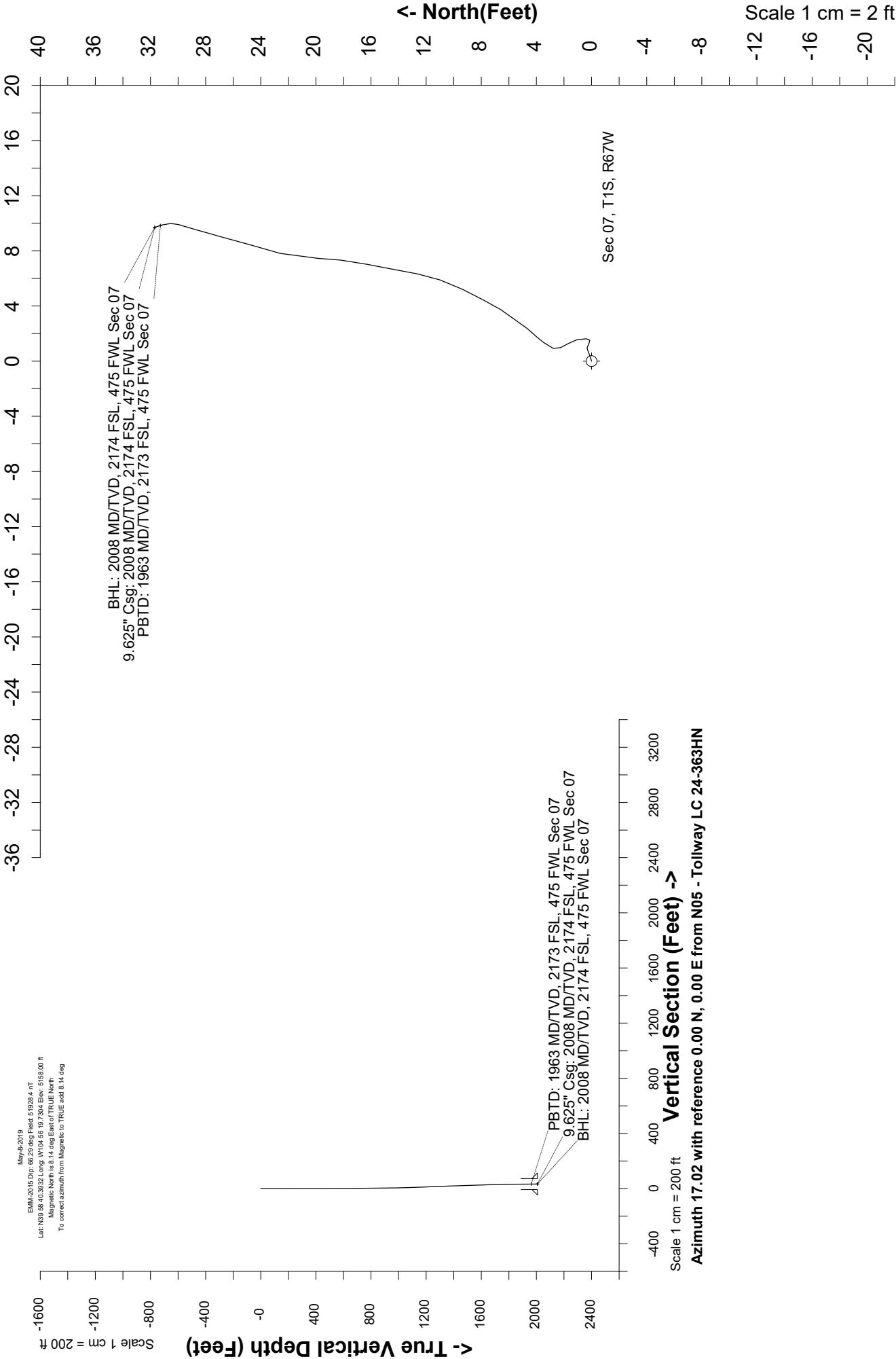
Location	Colorado	Slot	N05 - Tollway LC 24-363HN
Field	Wattenburg	Well	Tollway LC 24-363HN
Installation	Tollway	Wellbore	Tollway LC 24-363HN - Surface Hole



EMA-2015 Dir: 6620 dir Field: 51928.4 nT
Lat: N39 58.40 30.32 Long: W104 56 19 7.304 Elev: 5155.00 ft
Magnetic North is 8.14 deg East of TRUE North
To correct azimuth from Magnetic to TRUE add 8.14 deg

Scale 1 cm = 2 ft

East (Feet) ->



Scale 1 cm = 200 ft

Vertical Section (Feet) ->

Azimuth 17.02 with reference 0.00 N, 0.00 E from N05 - Tollway LC 24-363HN

Header Information		measured depth (ft)	inclination (°)	azimuth (°)	true vertical depth (ft)	northing +N/-S (ft)	easting +E/-W (ft)
Operator Name		0	0.00	0.00	0	0.00	0.00
Great Western Oil & Gas Company LLC		84	0.60	71.37	84	0.14	0.42
Operator Number		170	0.03	291.48	170	0.29	0.82
10110		260	0.20	82.21	260	0.32	0.96
Well Name and Number		353	0.36	128.21	353	0.16	1.35
Tollway LC 24-363HN		442	0.50	7.83	442	0.38	1.62
API Number (if available)		532	0.41	337.43	532	1.06	1.55
05-001-10425		622	0.47	335.10	622	1.69	1.27
Location: QQ SEC TWP RGE		712	0.35	328.94	712	2.26	0.97
NWSW Sec 7 1S 67W		802	0.37	19.29	802	2.77	0.93
Citing Type: Planned or Actual		892	0.69	37.15	892	3.48	1.35
Actual		982	1.32	42.18	982	4.68	2.37
Deviation Indicator		1072	1.69	30.15	1072	6.60	3.74
Horizontal ▼		1162	2.32	26.32	1162	9.38	5.21
North Reference		1252	2.09	10.70	1252	12.62	6.32
True ▼		1342	2.65	10.80	1342	16.28	7.02
Grid Type		1432	1.93	1.64	1432	19.84	7.45
▼		1522	1.64	14.44	1522	22.60	7.82
		1611	1.35	17.75	1611	24.83	8.45
		1701	1.46	13.15	1701	26.96	9.04
		1791	1.37	18.81	1791	29.09	9.64
		1881	0.53	358.64	1881	30.53	9.98
		1952	0.55	341.76	1952	31.18	9.87
		2008	0.55	341.76	2008	31.69	9.70