



December 9, 2019

Mr. Mike Gardner  
TEP Environmental Specialist  
TEP Rocky Mountain LLC  
1058 County Road 215  
Parachute, Colorado 81635

**RE: RWF 12-9 Drill Pad Baseline Water Quality Evaluation**

Dear Mr. Gardner,

Western Water & Land, Inc. (WWL) has completed a hydrologic Water Source evaluation for the TEP Rocky Mountain LLC (TEP) RWF 12-9 Drill Pad in accordance with Colorado Oil and Gas Conservation Commission (COGCC) Rule 609. Drill Pad RWF 12-9 is located in NE $\frac{1}{4}$ , SE $\frac{1}{4}$ , Section 8, Township 6 S, Range 94 W, 6<sup>th</sup> P.M. (see Figure 1).

**Water Sources**

The evaluation considered all Water Sources as defined in Rule 609 within a 0.5-mile radius of the referenced drill pad. Water Sources as defined in Rule 609 include Colorado Division of Water Resources (DWR) registered water wells (water wells with existing valid well permits), permitted or adjudicated springs, and monitoring wells installed for baseline sampling and monitoring under COGCC Rules 318A.e(4), 608, 609, 908.b(9) or specified conditions of approval. Water Sources located on the basis of section quarters were included in the evaluation if any portion of the section quarter(s) lies within the 0.5-mile radius area. Monitoring Hole permits (MH designation), and abandoned, canceled, denied, or expired permits of any type are not typically not considered. Similarly, water right decrees that are shown as having a non-existent or unusable structure in the state database are not considered a viable Water Source.

As indicated in Figure 1, no Water Sources were located within a 0.5-mile radius of the RWF 12-9 Drill Pad.

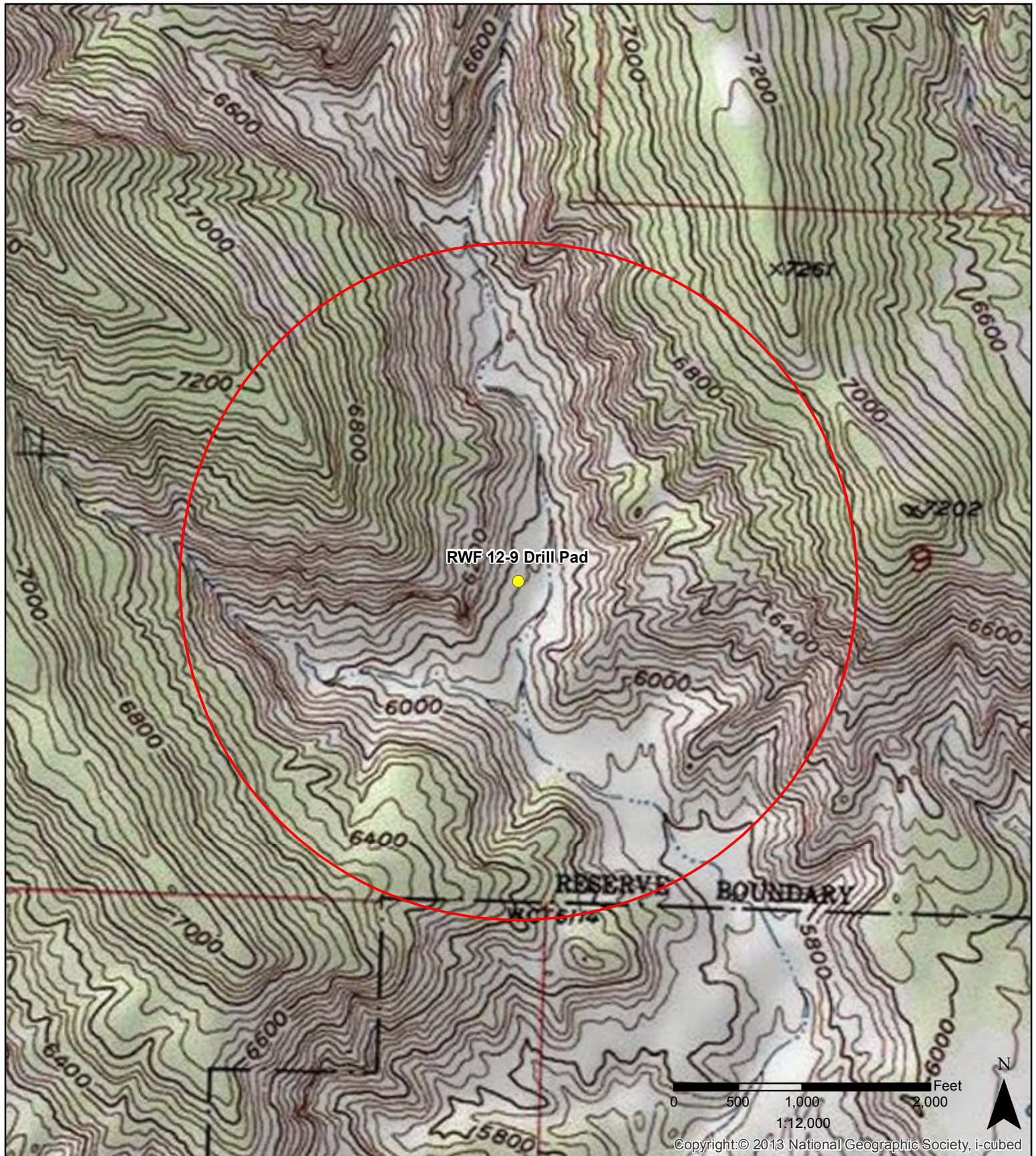
If you have any questions or concerns, please contact me at (970) 242-0170.

Sincerely,

Bruce D. Smith  
Principal Hydrogeologist  
WESTERN WATER & LAND, INC.

Attachment



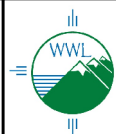


#### Legend

- |  |  |
|--|--|
| <span style="color: yellow;">●</span> RWF 12-9 Drill Pad                           | <span style="color: green;">■</span> Water right decree        |
| <span style="color: red; font-size: 2em;">○</span> 0.5-mile radius evaluation area | <span style="color: blue;">●</span> Outside permits or decrees |
| <span style="color: green;">●</span> Constructed well                              |  |
| <span style="color: red;">●</span> Well completion status unknown                  |  |

**Figure 1: RWF 12-9 Drill Pad  
0.5-Mile Radius Water Source Evaluation  
NE 1/4, SE 1/4, S8, T6S, R94W, 6 PM**

Garfield County, Colorado  
TEP Rocky Mountain, LLC



Western Water & Land, Inc.