

● = PROPOSED WELLHEAD.  
 ○ = TARGET BOTTOM HOLE.  
 ▲ = SECTION CORNERS LOCATED. (NAD 83)  
 ◆ = TOP PRODUCTION ZONE.

NOTE:

- Distances referenced on plat to section lines are perpendicular.

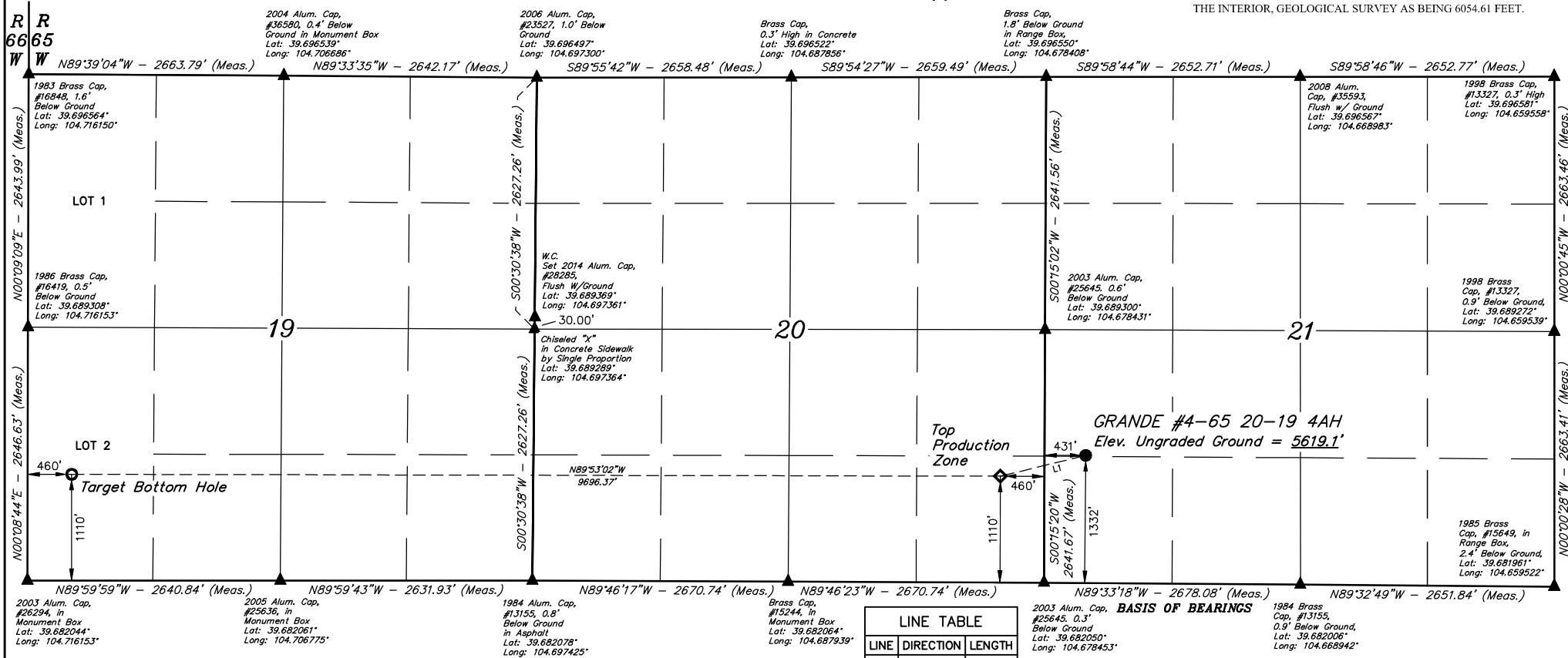
N



**GRANDE #4-65 20-19 4AH**  
**NW 1/4 SW 1/4, SECTION 21, T4S, R65W, 6th P.M.**  
**ARAPAHOE COUNTY, COLORADO**

### BASIS OF ELEVATION

BENCHMARK 374 LOCATED ON THE SECTION LINE BETWEEN SECTIONS 12 & 13, T5S, R64W, 6th. P.M., TAKEN FROM 1988 PUBLISHED DATUM BY THE UNITED STATES DEPARTMENT OF THE INTERIOR, GEOLOGICAL SURVEY AS BEING 6054.61 FEET.



CERTIFICATE NO REGIS

THIS IS TO CERTIFY THAT THE ABOVE THAT WAS PREPARED FROM FIELD NOTES OF ACTUAL SURVEYS MADE BY ME OR UNDER MY SUPERVISION AND THAT THE SAME ARE TRUE AND CORRECT TO THE BEST OF MY KNOWLEDGE AND BELIEF.

REGISTERED LAND SURVEYOR  
REGISTRATION NO. 28285  
STATE OF COLORADO

LINE TABLE		
LINE	DIRECTION	LENGTH
L1	S76°20'31"W	917.94'

PDOP = 1,3

REV: 3 05-07-20 M.D. (COMPANY, TPZ &amp; BHL CHANGE)

<b>NAD 83 (SURFACE LOCATION)</b>	<b>NAD 83 (TOP PRODUCTION ZONE)</b>	<b>NAD 83 (TARGET BOTTOM HOLE)</b>
LATITUDE = 39°41'08.51" (39.685698)	LATITUDE = 39°41'06.35" (39.685908)	LATITUDE = 39°41'06.34" (39.685905)
LONGITUDE = 104°40'36.88" (104.676910)	LONGITUDE = 104°40'48.28" (104.680077)	LONGITUDE = 104°42'52.27" (104.71451)
<b>NAD 27 (SURFACE LOCATION)</b>	<b>NAD 27 (TOP PRODUCTION ZONE)</b>	<b>NAD 27 (TARGET BOTTOM HOLE)</b>
LATITUDE = 39°41'08.56" (39.685711)	LATITUDE = 39°41'06.40" (39.685111)	LATITUDE = 39°41'06.38" (39.685107)
LONGITUDE = 104°40'34.99" (104.676385)	LONGITUDE = 104°40'46.39" (104.675952)	LONGITUDE = 104°42'50.37" (104.71399)
<b>STATE PLANE NAD 83 (CO. COEN.)</b>	<b>STATE PLANE NAD 83 (CO. COEN.)</b>	<b>STATE PLANE NAD 83 (CO. COEN.)</b>
N: 1675693.85 E: 3231647.11	N: 1675467.36 E: 3230757.83	N: 1675380.29 E: 3221064.73
<b>STATE PLANE NAD 27 (CO. COEN.)</b>	<b>STATE PLANE NAD 27 (CO. COEN.)</b>	<b>STATE PLANE NAD 27 (CO. COEN.)</b>
N: 675686.22 E: 2231800.95	N: 675450.72 E: 2230911.68	N: 675372.50 E: 2221218.66



**UELS, LLC**  
Corporate Office \* 85 South 200 East  
Vernal, UT 84078 \* (435) 789-1017

<b>SURVEYED BY</b>	JONATHON BAYLIFF, J.C.	04-20-18	<b>SCALE</b>
<b>DRAWN BY</b>	J.C.S.	11-03-16	1" = 1000'

WELL LOCATION PLAT