

**LEGEND:**

- = PROPOSED WELLHEAD.
- = TARGET BOTTOM HOLE.
- ▲ = SECTION CORNERS LOCATED. (NAD 83)
- ◆ = TOP PRODUCTION ZONE.

**NOTE:**  
• Distances referenced on plat to section lines are perpendicular.

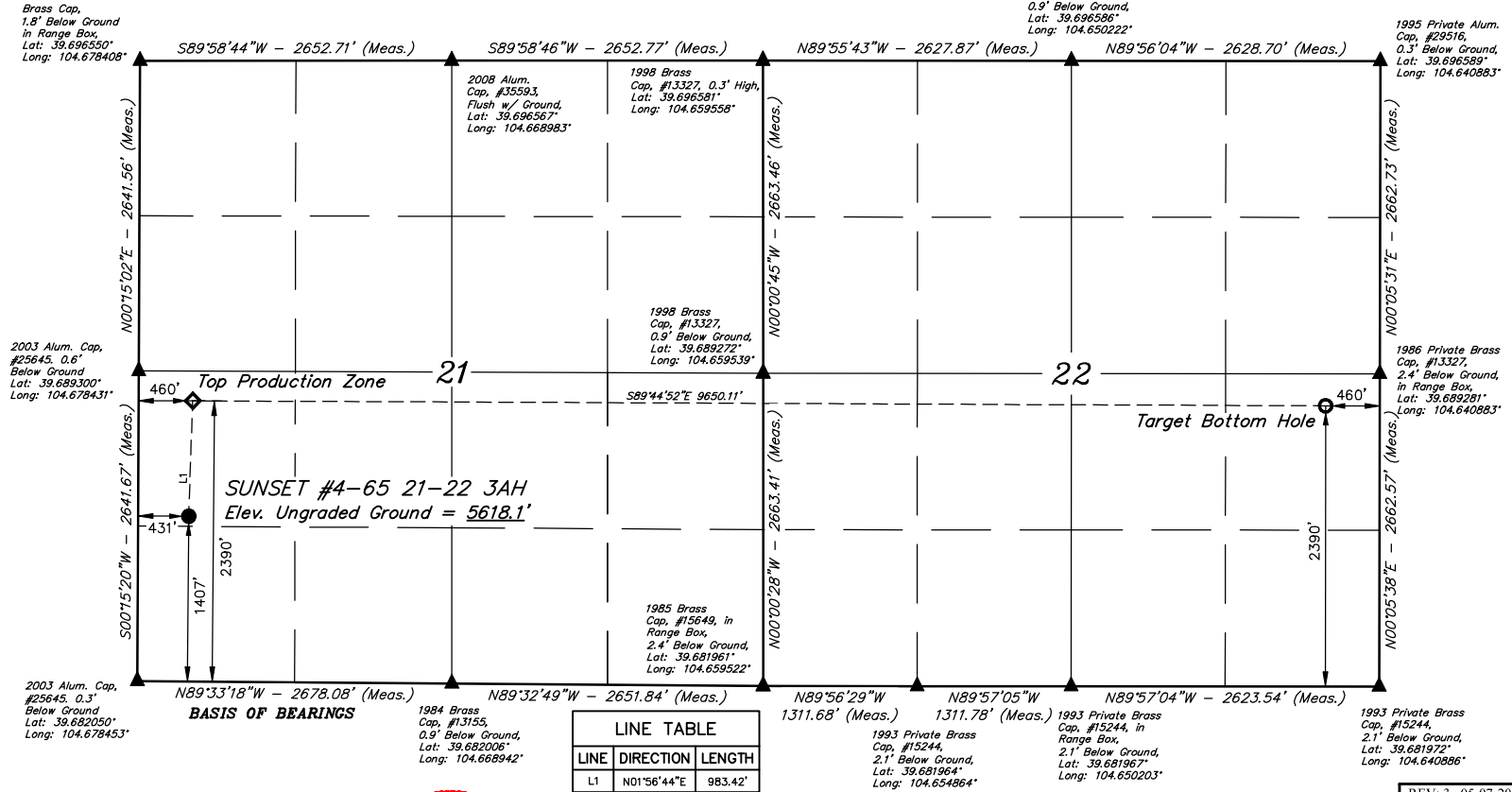
*T4S, R65W, 6th P.M.*

**CRESTONE PEAK RESOURCES OPERATING LLC**

**SUNSET #4-65 21-22 3AH**  
NW 1/4 SW 1/4, SECTION 21, T4S, R65W, 6th P.M.  
ARAPAHOE COUNTY, COLORADO

**BASIS OF ELEVATION**

BENCHMARK 374 LOCATED ON THE SECTION LINE BETWEEN SECTIONS 12 & 13, T5S, R64W, 6th. P.M., TAKEN FROM 1988 PUBLISHED DATUM BY THE UNITED STATES DEPARTMENT OF THE INTERIOR, GEOLOGICAL SURVEY AS BEING 6054.61 FEET.



CERTIFICATE OF REGISTRATION  
THIS IS TO CERTIFY THAT THE ABOVE NAMED SURVEYOR HAS BEEN REGISTERED AND THAT THE SAME ARE TRUE AND CORRECT TO THE BEST OF HIS KNOWLEDGE AND BELIEF.

REGISTERED LAND SURVEYOR  
REGISTRATION NO. 28285  
STATE OF COLORADO  
JANUARY 1, 2015 - JANUARY 1, 2019

NAD 83 (SURFACE LOCATION)	NAD 83 (TOP PRODUCTION ZONE)	NAD 83 (TARGET BOTTOM HOLE)
LATITUDE = 39°41'09.25" (39.685904)	LATITUDE = 39°41'18.97" (39.688602)	LATITUDE = 39°41'18.71" (39.688531)
LONGITUDE = 104°40'36.87" (104.676910)	LONGITUDE = 104°40'36.47" (104.676798)	LONGITUDE = 104°38'33.07" (104.642518)
NAD 27 (SURFACE LOCATION)	NAD 27 (TOP PRODUCTION ZONE)	NAD 27 (TARGET BOTTOM HOLE)
LATITUDE = 39°41'09.30" (39.685917)	LATITUDE = 39°41'19.01" (39.688614)	LATITUDE = 39°41'18.76" (39.688544)
LONGITUDE = 104°40'34.98" (104.676384)	LONGITUDE = 104°40'34.58" (104.676273)	LONGITUDE = 104°38'31.18" (104.641994)
STATE PLANE NAD 83 (CO. CEN.)	STATE PLANE NAD 83 (CO. CEN.)	STATE PLANE NAD 83 (CO. CEN.)
N: 1675768.83 E: 3231646.61	N: 1676751.70 E: 3231669.17	N: 1676815.39 E: 3241316.21
STATE PLANE NAD 27 (CO. CEN.)	STATE PLANE NAD 27 (CO. CEN.)	STATE PLANE NAD 27 (CO. CEN.)
N: 675761.20 E: 2231800.45	N: 676744.06 E: 2231822.99	N: 676807.90 E: 2241469.96



**SURVEYED BY** JONATHON BAYLIFF, J.C. 04-20-18  
**DRAWN BY** L.C.S. 11-03-16

**UELS, LLC**  
Corporate Office \* 85 South 200 East  
Vernal, UT 84078 \* (435) 789-1017

**WELL LOCATION PLAT**

**SCALE**  
1" = 1000'

LEGEND:

- = PROPOSED WELLHEAD.
- = TARGET BOTTOM HOLE.
- ▲ = SECTION CORNERS LOCATED. (NAD 83)
- ◆ = TOP PRODUCTION ZONE.

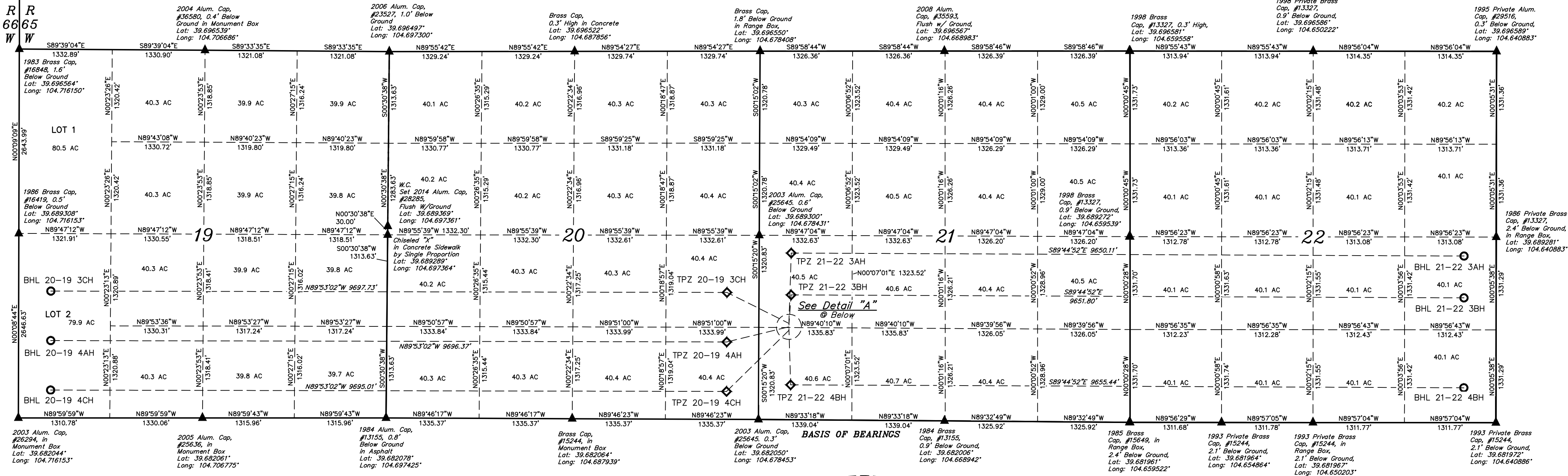
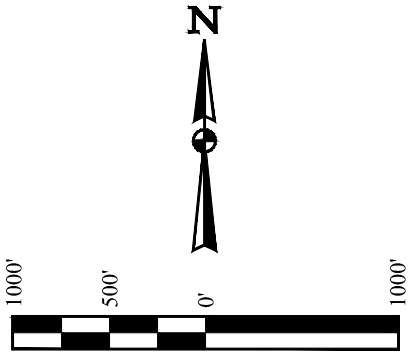
T4S, R65W, 6th P.M.

CRESTONE PEAK RESOURCES OPERATING LLC

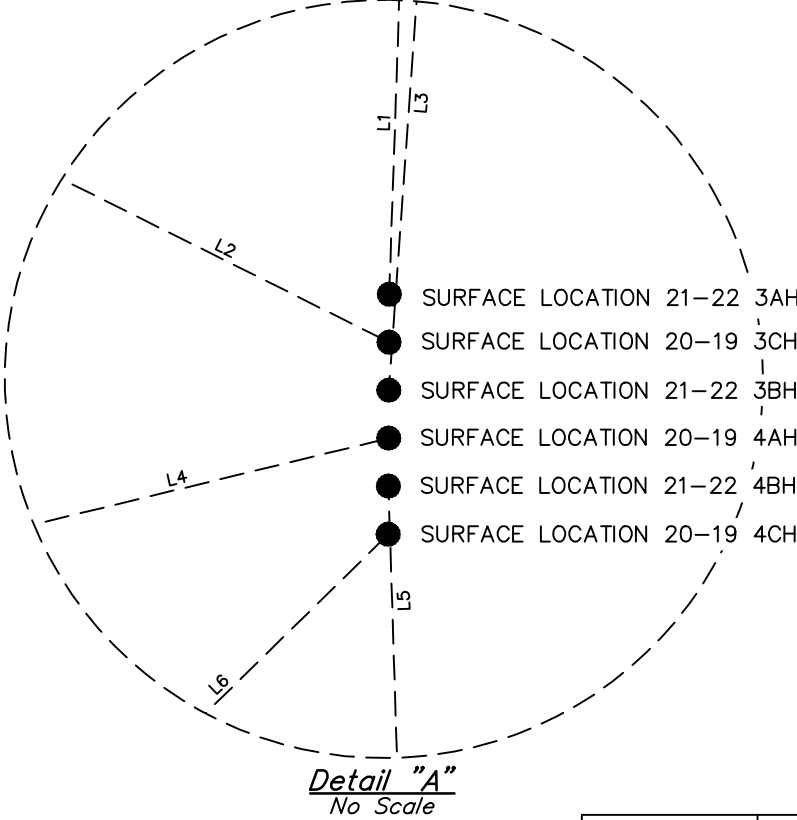
GRANDE #4-65 20-19 3BH, 3CH, 3DH, 4AH, 4BH, 4CH & 4DH  
ON EXISTING GRANDE #4-65 20-19 3AH PAD  
W 1/2 SW 1/4, SECTION 21, T4S, R65W, 6th P.M.  
ARAPAHOE COUNTY, COLORADO

BASIS OF ELEVATION

BENCHMARK 374 LOCATED ON THE SECTION LINE BETWEEN  
SECTIONS 12 & 13, T5S, R64W, 6th P.M., TAKEN FROM 1988  
PUBLISHED DATUM BY THE UNITED STATES DEPARTMENT OF  
THE INTERIOR, GEOLOGICAL SURVEY AS BEING 6054.61 FEET.

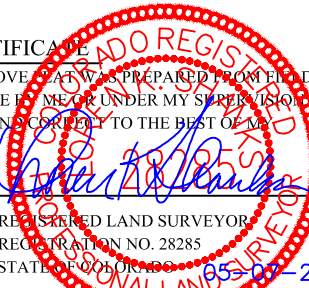


LINE TABLE		
LINE	DIRECTION	LENGTH
L1	N01°56'44"E	983.42'
L2	N63°30'02"W	993.40'
L3	N04°05'12"E	433.96'
L4	S76°20'31"W	917.94'
L5	S01°48'06"E	807.54'
L6	S45°35'18"W	1252.83'



WELL	SURFACE LOCATION	TOP PRODUCTION ZONE	TARGET BOTTOM HOLE
21-22 3AH	1407' FSL 431' FWL	2390' FSL 460' FWL	2390' FSL 460' FWL
20-19 3CH	1382' FSL 431' FWL	1820' FSL 460' FWL	1820' FSL 460' FWL
21-22 3BH	1357' FSL 431' FWL	1790' FSL 460' FWL	1790' FSL 460' FWL
20-19 4AH	1332' FSL 431' FWL	1110' FSL 460' FWL	1110' FSL 460' FWL
21-22 4BH	1307' FSL 431' FWL	500' FSL 460' FWL	500' FSL 460' FWL
20-19 4CH	1282' FSL 431' FWL	400' FSL 460' FWL	400' FSL 460' FWL

THIS IS TO CERTIFY THAT THE ABOVE SURVEY WAS PREPARED AND CONDUCTED  
NOTES OF ACTUAL SURVEYS MADE BY ME UNDER MY SUPERVISION  
AND THAT THE SAME ARE TRUE AND CORRECT TO THE BEST OF MY  
KNOWLEDGE AND BELIEF.



REV: 4 05-07-20 M.D.  
(COMPANY, WELL NAME, TPZ & BHL CHANGE)

SURVEYED BY	JONATHAN BAYLIFF, J.C.S.	04-20-18	SCALE
DRAWN BY	L.C.S.	11-03-16	1" = 1000'
SECTION BREAKDOWN			