



Crestone Peak Resources

Schlumberger

Plan 0

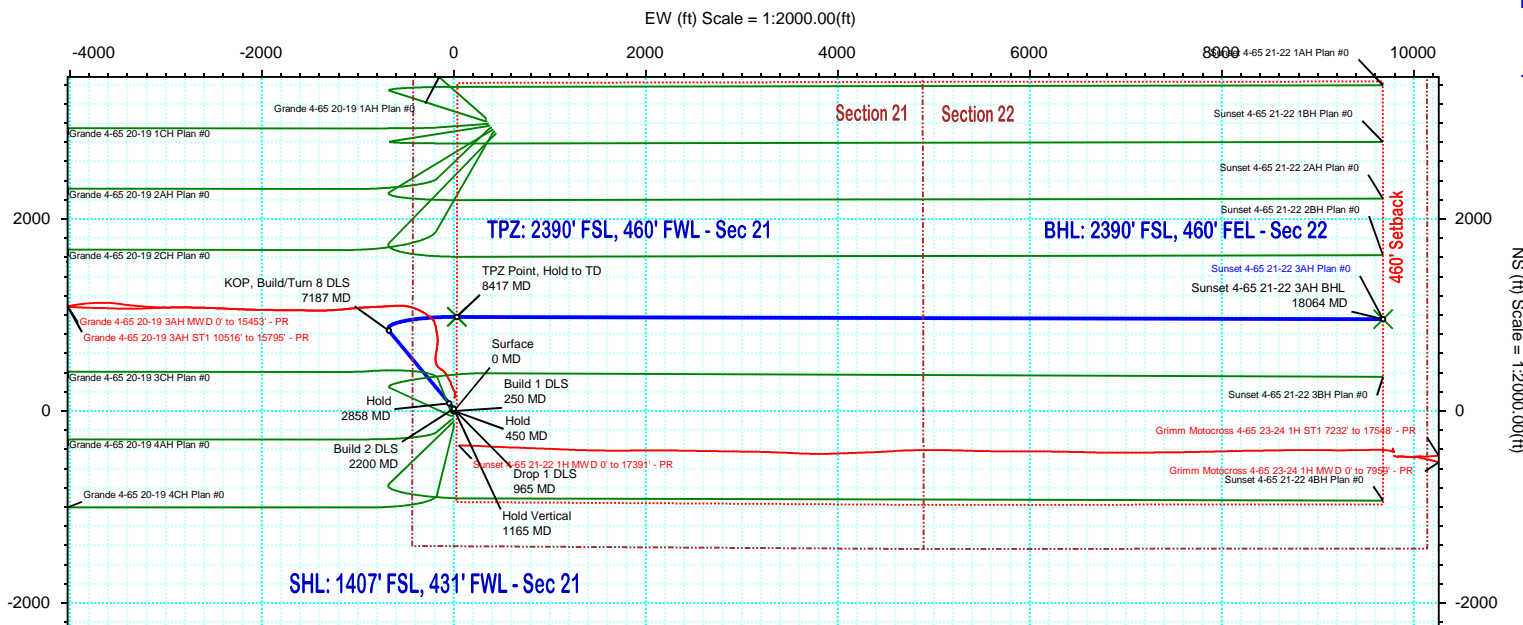
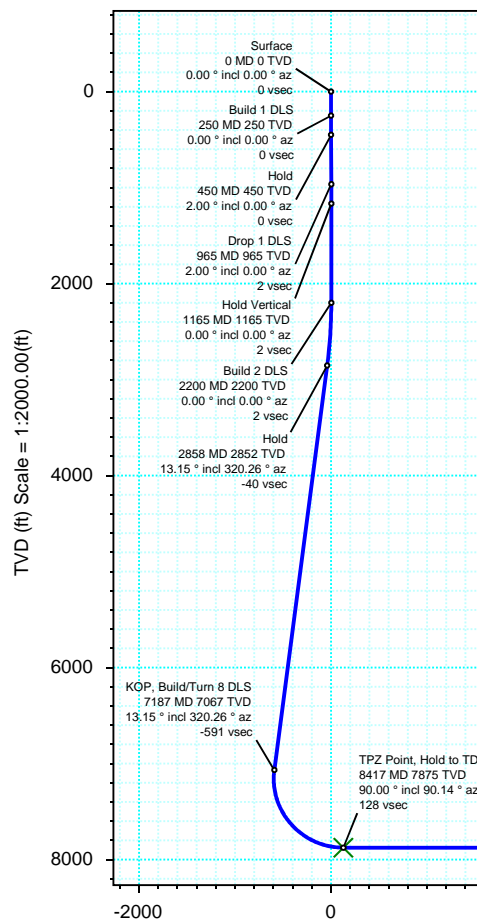
Borehole:	Well:	Field:	Structure:
Original Hole	Sunset 4-65 21-22 3AH	CO, Arapahoe County (NAD 83 CZ)	Crestone Peak 21-04S-65W (Grande South Pad)

Gravity & Magnetic Parameters					Surface Location				NAD83 Colorado State Plane, Central Zone, US Feet				Miscellaneous			
Model:	HDGM 2020	Dip:	66.341°	Date:	20-May-2020	Lat:	N 39 41 9.25	Northings:	1675768.85ftUS	Grid Conv:	0.5191°	Slot:	Sunset 4-65 21-22 3AH	TVD Ref:	KB 28ft(5646.1ft above MSL)	
MagDec:	8.58°	FS:	51552.707nT	Gravity FS:	998.917mgn (9.80665 Based)	Lon:	W 104 40 36.88	Easting:	3231646.5ftUS	Scale Fact:	0.99998795	Plan:	Sunset 4-65 21-22 3AH Plan #0			

Proposal



True North
Tot Corr (M->T 8.580°)
Mag Dec (8.580°)
Grid Conv (0.519°)



Target Description		Surface Location						
		Latitude	Longitude	Northings	Easting	TVD	VSec	Local Coord
Grande Pad Sec 21-22		N 39 41 39.04	W 104 40 32.41	1678785.81	3231968.40	5646.10	644.62	3013.95
Grande Pad Sec 21-22 - 460' SB		N 39 41 39.04	W 104 40 32.41	1678785.81	3231968.40	5646.10	644.62	3013.95
Sunset 4-65 21-22 3AH TPZ		N 39 41 18.97	W 104 40 36.47	1676751.88	3231669.11	7875.00	128.24	982.79
Sunset 4-65 21-22 3AH BHL		N 39 41 18.71	W 104 38 33.06	1676815.26	3241316.30	7875.00	9726.39	958.76

Critical Points								
Critical Point	MD	INCL	AZIM	TVD	VSEC	N(+)/S(-)	E(+)/W(-)	DLS
Surface	0.00	0.00	0.00	0.00	0.00	0.00	0.00	
Build 1 DLS	250.00	0.00	0.00	250.00	0.00	0.00	0.00	0.00
Hold	450.36	2.00	0.00	450.32	0.35	3.50	0.00	1.00
Drop 1 DLS	965.04	2.00	0.00	964.68	2.12	21.50	0.00	0.00
Hold Vertical	1165.40	0.00	0.00	1165.00	2.46	25.00	0.00	1.00
Build 2 DLS	2200.40	0.00	0.00	2200.00	2.46	25.00	0.00	0.00
Hold	2857.65	13.15	320.26	2851.50	-39.60	82.72	-47.99	2.00
KOP, Build/Turn 8 DLS	7186.82	13.15	320.26	7067.24	-591.30	839.80	-677.38	0.00
TPZ Point, Hold to TD	8416.63	90.00	90.14	7875.00	128.24	982.79	31.52	8.00
Sunset 4-65 21-22 3AH	18064.16	90.00	90.14	7875.00	9726.39	958.76	9679.03	0.00

Vertical Section (ft) Azim = 84.34° Scale = 1:2000.00(ft) Origin = 0N/-S, 0E/-W

Sunset 4-65 21-22 3AH Plan #0 Proposal Geodetic Report

(Def Plan)

Report Date: May 22, 2020 - 02:11 PM
Client: Crestone Peak Resources
Field: CO, Arapahoe County (NAD 83 CZ)
Structure / Slot: Crestone Peak 21-04S-65W (Grande South Pad) / Sunset 4-65 21-22 3AH
Well: Sunset 4-65 21-22 3AH
Borehole: Original Hole
UWI / API#: Unknown / Unknown
Survey Name: Sunset 4-65 21-22 3AH Plan #0
Survey Date: March 19, 2020
Tort / AHD / DDI / ERD Ratio: 115.537 ° / 11498.173 ft / 6.484 / 1.460
Coordinate Reference System: NAD83 Colorado State Plane, Central Zone, US Feet
Location Lat / Long: N 39° 41' 9.25440", W 104° 40' 36.87600"
Location Grid N/E Y/X: N 1675768.855 ftUS, E 3231646.495 ftUS
CRS Grid Convergence Angle: 0.5191 °
Grid Scale Factor: 0.99998795
Version / Patch: 2.10.810.1

Survey / DLS Computation: Minimum Curvature / Lubinski
Vertical Section Azimuth: 84.343 ° (True North)
Vertical Section Origin: 0.000 ft, 0.000 ft
TVD Reference Datum: KB 28ft
TVD Reference Elevation: 5646.100 ft above MSL
Seabed / Ground Elevation: 5618.100 ft above MSL
Magnetic Declination: 8.580 °
Total Gravity Field Strength: 998.9165mgn (9.80665 Based)
Gravity Model: GARM
Total Magnetic Field Strength: 51552.707 nT
Magnetic Dip Angle: 66.341 °
Declination Date: May 20, 2020
Magnetic Declination Model: HDGM 2020
North Reference: True North
Grid Convergence Used: 0.0000 °
Total Corr Mag North→True North: 8.5796 °
Local Coord Referenced To: Well Head

Comments	MD (ft)	Incl (°)	Azim True (°)	TVD (ft)	VSEC (ft)	NS (ft)	EW (ft)	DLS (°/100ft)	Northing (ftUS)	Easting (ftUS)	Latitude (°)	Longitude (°)	
Surface	0.00	0.00	0.00	0.00	0.00	0.00	0.00	0.00	N/A	1675768.85	3231646.50	39.685904	-104.676910
	100.00	0.00	0.00	100.00	0.00	0.00	0.00	0.00	1675768.85	3231646.50	39.685904	-104.676910	
	200.00	0.00	0.00	200.00	0.00	0.00	0.00	0.00	1675768.85	3231646.50	39.685904	-104.676910	
Build 1 DLS	250.00	0.00	0.00	250.00	0.00	0.00	0.00	0.00	1675768.85	3231646.50	39.685904	-104.676910	
	300.00	0.50	0.00	300.00	0.02	0.22	0.00	1.00	1675769.07	3231646.49	39.685905	-104.676910	
	400.00	1.50	0.00	399.98	0.19	1.96	0.00	1.00	1675770.82	3231646.48	39.685909	-104.676910	
Hold	450.36	2.00	0.00	450.32	0.35	3.50	0.00	1.00	1675772.36	3231646.46	39.685914	-104.676910	
	500.00	2.00	0.00	499.93	0.52	5.24	0.00	0.00	1675774.09	3231646.45	39.685918	-104.676910	
	600.00	2.00	0.00	599.87	0.86	8.73	0.00	0.00	1675777.59	3231646.42	39.685928	-104.676910	
	700.00	2.00	0.00	699.81	1.21	12.23	0.00	0.00	1675781.09	3231646.38	39.685938	-104.676910	
	800.00	2.00	0.00	799.75	1.55	15.73	0.00	0.00	1675784.58	3231646.35	39.685947	-104.676910	
	900.00	2.00	0.00	899.68	1.89	19.22	0.00	0.00	1675788.08	3231646.32	39.685957	-104.676910	
Drop 1 DLS	965.04	2.00	0.00	964.68	2.12	21.50	0.00	0.00	1675790.35	3231646.30	39.685963	-104.676910	
	1000.00	1.65	0.00	999.63	2.23	22.61	0.00	1.00	1675791.47	3231646.29	39.685966	-104.676910	
	1100.00	0.65	0.00	1099.61	2.43	24.63	0.00	1.00	1675793.48	3231646.27	39.685972	-104.676910	
Hold Vertical	1165.40	0.00	0.00	1165.00	2.46	25.00	0.00	1.00	1675793.85	3231646.27	39.685973	-104.676910	
	1200.00	0.00	0.00	1199.60	2.46	25.00	0.00	0.00	1675793.85	3231646.27	39.685973	-104.676910	
	1300.00	0.00	0.00	1299.60	2.46	25.00	0.00	0.00	1675793.85	3231646.27	39.685973	-104.676910	
	1400.00	0.00	0.00	1399.60	2.46	25.00	0.00	0.00	1675793.85	3231646.27	39.685973	-104.676910	
	1500.00	0.00	0.00	1499.60	2.46	25.00	0.00	0.00	1675793.85	3231646.27	39.685973	-104.676910	
	1600.00	0.00	0.00	1599.60	2.46	25.00	0.00	0.00	1675793.85	3231646.27	39.685973	-104.676910	
	1700.00	0.00	0.00	1699.60	2.46	25.00	0.00	0.00	1675793.85	3231646.27	39.685973	-104.676910	
	1800.00	0.00	0.00	1799.60	2.46	25.00	0.00	0.00	1675793.85	3231646.27	39.685973	-104.676910	
	1900.00	0.00	0.00	1899.60	2.46	25.00	0.00	0.00	1675793.85	3231646.27	39.685973	-104.676910	
	2000.00	0.00	0.00	1999.60	2.46	25.00	0.00	0.00	1675793.85	3231646.27	39.685973	-104.676910	
	2100.00	0.00	0.00	2099.60	2.46	25.00	0.00	0.00	1675793.85	3231646.27	39.685973	-104.676910	
	2200.00	0.00	0.00	2199.60	2.46	25.00	0.00	0.00	1675793.85	3231646.27	39.685973	-104.676910	
Build 2 DLS	2200.40	0.00	0.00	2200.00	2.46	25.00	0.00	0.00	1675793.85	3231646.27	39.685973	-104.676910	
	2300.00	1.99	320.26	2299.58	1.49	26.33	-1.11	2.00	1675795.17	3231645.15	39.685976	-104.676914	
	2400.00	3.99	320.26	2399.44	-1.43	30.35	-4.44	2.00	1675799.16	3231641.78	39.685987	-104.676926	
	2500.00	5.99	320.26	2499.06	-6.31	37.04	-10.01	2.00	1675805.80	3231636.15	39.686006	-104.676946	
	2600.00	7.99	320.26	2598.31	-13.13	46.40	-17.79	2.00	1675815.09	3231628.29	39.686031	-104.676973	
	2700.00	9.99	320.26	2697.08	-21.89	58.41	-27.78	2.00	1675827.01	3231618.19	39.686064	-104.677009	
	2800.00	11.99	320.26	2795.24	-32.57	73.08	-39.97	2.00	1675841.56	3231605.87	39.686105	-104.677052	
Hold	2857.65	13.15	320.26	2851.50	-39.60	82.72	-47.99	2.00	1675851.14	3231597.76	39.686131	-104.677081	
	2900.00	13.15	320.26	2892.74	-45.00	90.13	-54.14	0.00	1675858.49	3231591.54	39.686151	-104.677102	
	3000.00	13.15	320.26	2990.12	-57.74	107.62	-68.68	0.00	1675875.84	3231576.84	39.686199	-104.677154	
	3100.00	13.15	320.26	3087.50	-70.48	125.10	-83.22	0.00	1675893.20	3231562.14	39.686247	-104.677206	
	3200.00	13.15	320.26	3184.88	-83.23	142.59	-97.76	0.00	1675910.55	3231547.45	39.686295	-104.677257	
	3300.00	13.15	320.26	3282.26	-95.97	160.08	-112.30	0.00	1675927.91	3231532.75	39.686343	-104.677309	
	3400.00	13.15	320.26	3379.64	-108.72	177.57	-126.84	0.00	1675945.26	3231518.06	39.686391	-104.677361	
	3500.00	13.15	320.26	3477.02	-121.46	195.06	-141.38	0.00	1675962.62	3231503.36	39.686439	-104.677412	
	3600.00	13.15	320.26	3574.40	-134.20	212.54	-155.91	0.00	1675979.97	3231488.66	39.686487	-104.677464	
	3700.00	13.15	320.26	3671.78	-146.95	230.03	-170.45	0.00	1675997.33	3231473.97	39.686535	-104.677516	
	3800.00	13.15	320.26	3769.16	-159.69	247.52	-184.99	0.00	1676014.68	3231459.27	39.686583	-104.677567	
	3900.00	13.15	320.26	3866.54	-172.43	265.01	-199.53	0.00	1676032.04	3231444.58	39.686632	-104.677619	
	4000.00	13.15	320.26	3963.92	-185.18	282.49	-214.07	0.00	1676049.39	3231429.88	39.686680	-104.677671	
	4100.00	13.15	320.26	4061.30	-197.92	299.98	-228.61	0.00	1676066.75	3231415.18	39.686728	-104.677722	
	4200.00	13.15	320.26	4158.68	-210.67	317.47	-243.14	0.00	1676084.10	3231400.49	39.686776	-104.677774	
	4300.00	13.15	320.26	4256.06	-223.41	334.96	-257.68	0.00	1676101.46	3231385.79	39.686824	-104.677826	
	4400.00	13.15	320.26	4353.44	-236.15	352.45	-272.22	0.00	1676118.81	3231371.10	39.686872	-104.677877	
	4500.00	13.15	320.26	4450.82	-248.90	369.93	-286.76	0.00	1676136.17	3231356.40	39.686920	-104.677929	
	4600.00	13.15	320.26	4548.20	-261.64	387.42	-301.30	0.00	1676153.52	3231341.70	39.686968	-104.677981	
	4700.00	13.15	320.26	4645.58	-274.38	404.91	-315.84	0.00	1676170.88	3231327.01	39.687016	-104.678032	
	4800.00	13.15	320.26	4742.96	-287.13	422.40	-330.37	0.00	1676188.24	3231312.31	39.687064	-104.678084	
	4900.00	13.15	320.26	4840.34	-299.87	439.88	-344.91	0.00	1676205.59	3231297.62	39.687112	-104.678136	
	5000.00	13.15	320.26	4937.72	-312.62	457.37	-359.45	0.00	1676222.95	3231282.92	39.687160	-104.678187	
	5100.00	13.15	320.26	5035.10	-325.36	474.86	-373.99	0.00	1676240.30	3231268.22	39.687208	-104.678239	
	5200.00	13.15	320.26	5132.48	-338.10	492.35	-388.53	0.00	1676257.66	3231253.53	39.687256	-104.678291	
	5300.00	13.15	320.26	5229.86	-350.85	509.84	-403.07	0.00	1676275.01	3231238.83	39.687304	-104.678342	
	5400.00	13.15	320.26	5327.24	-363.59	527.32	-417.60	0.00	1676292.37	3231224.14	39.687352	-104.678394	
	5500.00	13.15	320.26	5424.62	-376.33	544.81	-432.14	0.00	1676309.72	3231209.44	39.687400	-104.678445	
	5600.00	13.15	320.26	5522.00	-389.08	562.30	-446.68	0.00	1676327.08	3231194.74	39.687448	-104.678497	
	5700.00	13.15	320.26	5619.38	-401.82	579.79	-461.22	0.00	1676344.43	3231180.05	39.687496	-104.678549	
	5800.00	13.15	320.26	5716.76	-414.57	597.27	-475.76	0.00	1676361.79	3231165.35	39.687544	-104.678600	
	5900.00	13.15	320.26	5814.14	-427.31	614.76	-490.30	0.00	1676379.14	3231150.66	39.687592	-104.678652	
	6000.00	13.15	320.26	5911.52	-440.05	632.25	-504.84	0.00	1676396.50	3231135.96	39.687640	-104.678704	
	6100.00	13.15	320.26	6008.89	-452.80	649.74	-519.37	0.00	1676413.85	3231121.26	39.687688	-104.678755	
	6200.00	13.15	320.26	6106.27	-465.54	667.23	-533.91	0.00	1676431.21	3231106.57	39.687736	-104.678807	
	6300.00	13.15	320.26	6203.65	-478.29	684.71	-548.45	0.00	1676448.56	3231091.87	39.687784	-104.678859	
	6400.00	13.15	320.26	6301.03	-491.03	702.20	-562.99	0.00	1676465.92	3231077.17	39.687832	-104.678910	
	6500.00	13.15	320.26	6398.41	-503.77	719.69	-577.53	0.00	1676483.27	3231062.48	39.687880	-104.678962	
	6600.00	13.15	320.26	6495.79	-516.52	737.18	-592.07	0.00	1676500.63	3231047.78	39.687928	-104.679014	
	6700.00	13.15	320.26	6593.17	-529.26	754.66	-606.60	0.00	1676517.98	3231033.09	39.687976	-104.679065	
	6800.00	13.15	320.26	6690.55	-542.00	772.15	-621.14	0.00	1676535.34	3231018.39	39.688024	-104.679117	
	6900.00												

Comments	MD (ft)	Incl (°)	Azim True (°)	TVD (ft)	VSEC (ft)	NS (ft)	EW (ft)	DLS (°/100ft)	Northing (ftUS)	Easting (ftUS)	Latitude (°)	Longitude (°)
KOP, Build/Turn 8 DLS	7186.82	13.15	320.26	7067.24	-591.30	839.80	-677.38	0.00	1676602.47	3230961.54	39.688209	-104.679317
	7200.00	12.51	324.04	7080.09	-592.86	842.11	-679.18	8.00	1676604.76	3230959.73	39.688216	-104.679323
	7300.00	10.18	3.93	7178.27	-596.86	859.72	-684.94	8.00	1676622.32	3230953.81	39.688264	-104.679344
	7400.00	13.33	40.98	7276.30	-586.99	877.26	-676.76	8.00	1676639.94	3230961.83	39.688312	-104.679315
	7500.00	19.45	59.64	7372.26	-563.45	894.41	-654.80	8.00	1676657.28	3230983.63	39.688359	-104.679237
	7600.00	26.56	69.13	7464.28	-526.69	910.81	-619.49	8.00	1676674.00	3231018.79	39.688404	-104.679111
	7700.00	34.05	74.76	7550.57	-477.44	926.15	-571.51	8.00	1676689.78	3231066.62	39.688446	-104.678941
	7800.00	41.70	78.54	7629.46	-416.64	940.14	-511.81	8.00	1676704.31	3231126.20	39.688485	-104.678729
	7900.00	49.46	81.32	7699.40	-345.49	952.50	-441.53	8.00	1676717.30	3231196.36	39.688519	-104.678479
	8000.00	57.26	83.53	7759.05	-265.37	962.99	-362.05	8.00	1676728.51	3231275.74	39.688548	-104.678196
	8100.00	65.09	85.37	7807.22	-177.83	971.41	-274.92	8.00	1676737.72	3231362.79	39.688571	-104.677887
	8200.00	72.95	86.99	7843.00	-84.58	977.59	-181.83	8.00	1676744.74	3231455.81	39.688588	-104.677556
	8300.00	80.82	88.48	7865.67	12.56	981.41	-84.60	8.00	1676749.45	3231553.01	39.688598	-104.677211
	8400.00	88.69	89.91	7874.81	111.70	982.80	14.89	8.00	1676751.74	3231652.48	39.688602	-104.676857
TPZ Point, Hold to TD	8416.63	90.00	90.14	7875.00	128.24	982.79	31.52	8.00	1676751.88	3231669.11	39.688602	-104.676798
	8500.00	90.00	90.14	7875.00	211.19	982.59	114.89	0.00	1676752.43	3231752.48	39.688601	-104.676502
	8600.00	90.00	90.14	7875.00	310.68	982.34	214.89	0.00	1676753.08	3231852.48	39.688601	-104.676146
	8700.00	90.00	90.14	7875.00	410.17	982.09	314.89	0.00	1676753.74	3231952.47	39.688600	-104.675791
	8800.00	90.00	90.14	7875.00	509.65	981.84	414.89	0.00	1676754.40	3232052.47	39.688599	-104.675436
	8900.00	90.00	90.14	7875.00	609.14	981.59	514.89	0.00	1676755.05	3232152.46	39.688599	-104.675080
	9000.00	90.00	90.14	7875.00	708.63	981.34	614.89	0.00	1676755.71	3232252.46	39.688598	-104.674725
	9100.00	90.00	90.14	7875.00	808.12	981.09	714.89	0.00	1676756.37	3232352.46	39.688597	-104.674370
	9200.00	90.00	90.14	7875.00	907.61	980.84	814.89	0.00	1676757.03	3232452.45	39.688597	-104.674014
	9300.00	90.00	90.14	7875.00	1007.09	980.59	914.89	0.00	1676757.68	3232552.45	39.688596	-104.673659
	9400.00	90.00	90.14	7875.00	1106.58	980.34	1014.89	0.00	1676758.34	3232652.45	39.688595	-104.673304
	9500.00	90.00	90.14	7875.00	1206.07	980.09	1114.89	0.00	1676759.00	3232752.44	39.688595	-104.672949
	9600.00	90.00	90.14	7875.00	1305.56	979.85	1214.89	0.00	1676759.65	3232852.44	39.688594	-104.672593
	9700.00	90.00	90.14	7875.00	1405.05	979.60	1314.89	0.00	1676760.31	3232952.44	39.688593	-104.672238
	9800.00	90.00	90.14	7875.00	1504.53	979.35	1414.89	0.00	1676760.97	3233052.43	39.688592	-104.671883
	9900.00	90.00	90.14	7875.00	1604.02	979.10	1514.89	0.00	1676761.62	3233152.43	39.688592	-104.671527
	10000.00	90.00	90.14	7875.00	1703.51	978.85	1614.89	0.00	1676762.28	3233252.43	39.688591	-104.671172
	10100.00	90.00	90.14	7875.00	1803.00	978.60	1714.89	0.00	1676762.94	3233352.42	39.688590	-104.670817
	10200.00	90.00	90.14	7875.00	1902.49	978.35	1814.89	0.00	1676763.59	3233452.42	39.688590	-104.670461
	10300.00	90.00	90.14	7875.00	2001.98	978.10	1914.89	0.00	1676764.25	3233552.41	39.688589	-104.670106
	10400.00	90.00	90.14	7875.00	2101.46	977.85	2014.89	0.00	1676764.91	3233652.41	39.688588	-104.669751
	10500.00	90.00	90.14	7875.00	2200.95	977.60	2114.89	0.00	1676765.57	3233752.41	39.688588	-104.669395
	10600.00	90.00	90.14	7875.00	2300.44	977.35	2214.89	0.00	1676766.22	3233852.40	39.688587	-104.669040
	10700.00	90.00	90.14	7875.00	2399.93	977.11	2314.89	0.00	1676766.88	3233952.40	39.688586	-104.668685
	10800.00	90.00	90.14	7875.00	2499.42	976.86	2414.88	0.00	1676767.54	3234052.40	39.688585	-104.668329
	10900.00	90.00	90.14	7875.00	2598.90	976.61	2514.88	0.00	1676768.19	3234152.39	39.688585	-104.667974
	11000.00	90.00	90.14	7875.00	2698.39	976.36	2614.88	0.00	1676768.85	3234252.39	39.688584	-104.667619
	11100.00	90.00	90.14	7875.00	2797.88	976.11	2714.88	0.00	1676769.51	3234352.39	39.688583	-104.667263
	11200.00	90.00	90.14	7875.00	2897.37	975.86	2814.88	0.00	1676770.16	3234452.38	39.688583	-104.666908
	11300.00	90.00	90.14	7875.00	2996.86	975.61	2914.88	0.00	1676770.82	3234552.38	39.688582	-104.666553
	11400.00	90.00	90.14	7875.00	3096.34	975.36	3014.88	0.00	1676771.48	3234652.38	39.688581	-104.666197
	11500.00	90.00	90.14	7875.00	3195.83	975.11	3114.88	0.00	1676772.13	3234752.37	39.688580	-104.665842
	11600.00	90.00	90.14	7875.00	3295.32	974.86	3214.88	0.00	1676772.79	3234852.37	39.688580	-104.665487
	11700.00	90.00	90.14	7875.00	3394.81	974.61	3314.88	0.00	1676773.45	3234952.36	39.688579	-104.665131
	11800.00	90.00	90.14	7875.00	3494.30	974.37	3414.88	0.00	1676774.11	3235052.36	39.688578	-104.664776
	11900.00	90.00	90.14	7875.00	3593.79	974.12	3514.88	0.00	1676774.76	3235152.36	39.688578	-104.664421
	12000.00	90.00	90.14	7875.00	3693.27	973.87	3614.88	0.00	1676775.42	3235252.35	39.688577	-104.664065
	12100.00	90.00	90.14	7875.00	3792.76	973.62	3714.88	0.00	1676776.08	3235352.35	39.688576	-104.663710
	12200.00	90.00	90.14	7875.00	3892.25	973.37	3814.88	0.00	1676776.73	3235452.35	39.688575	-104.663355
	12300.00	90.00	90.14	7875.00	3991.74	973.12	3914.88	0.00	1676777.39	3235552.34	39.688575	-104.662999
	12400.00	90.00	90.14	7875.00	4091.23	972.87	4014.88	0.00	1676778.05	3235652.34	39.688574	-104.662644
	12500.00	90.00	90.14	7875.00	4190.71	972.62	4114.88	0.00	1676778.70	3235752.34	39.688573	-104.662289
	12600.00	90.00	90.14	7875.00	4290.20	972.37	4214.88	0.00	1676779.36	3235852.33	39.688572	-104.661933
	12700.00	90.00	90.14	7875.00	4389.69	972.12	4314.88	0.00	1676780.02	3235952.33	39.688572	-104.661578
	12800.00	90.00	90.14	7875.00	4489.18	971.87	4414.88	0.00	1676780.67	3236052.33	39.688571	-104.661223
	12900.00	90.00	90.14	7875.00	4588.67	971.63	4514.88	0.00	1676781.33	3236152.32	39.688570	-104.660867
	13000.00	90.00	90.14	7875.00	4688.15	971.38	4614.88	0.00	1676781.99	3236252.32	39.688570	-104.660512
	13100.00	90.00	90.14	7875.00	4787.64	971.13	4714.88	0.00	1676782.65	3236352.31	39.688569	-104.660157
	13200.00	90.00	90.14	7875.00	4887.13	970.88	4814.88	0.00	1676783.30	3236452.31	39.688568	-104.659802
	13300.00	90.00	90.14	7875.00	4986.62	970.63	4914.88	0.00	1676783.96	3236552.31	39.688567	-104.659446
	13400.00	90.00	90.14	7875.00	5086.11	970.38	5014.88	0.00	1676784.62	3236652.30	39.688567	-104.659091
	13500.00	90.00	90.14	7875.00	5185.60	970.13	5114.88	0.00	1676785.27	3236752.30	39.688566	-104.658736
	13600.00	90.00	90.14	7875.00	5285.08	969.88	5214.88	0.00	1676785.93	3236852.30	39.688565	-104.658380
	13700.00	90.00	90.14	7875.00	5384.57	969.63	5314.88	0.00	1676786.59	3236952.29	39.688564	-104.658025
	13800.00	90.00	90.14	7875.00	5484.06	969.38	5414.88	0.00	1676787.24	3237052.29	39.688564	-104.657670
	13900.00	90.00	90.14	7875.00	5583.55	969.13	5514.88	0.00	1676787.90	3237152.29	39.688563	-104.657314
	14000.00	90.00	90.14	7875.00	5683.04	968.89	5614.88	0.00	1676788.56	3237252.28	39.688562	-104.656959
	14100.00	90.00	90.14	7875.00	5782.52	968.64	5714.87	0.00	1676789.21	3237352.28	39.688561	-104.656604
	14200.00	90.00	90.14	7875.00	5882.01	968.39	5814.87	0.00	1676789.87	3237452.28	39.688561	-104.656248
	14300.00	90.00	90.14	7875.00	5981.50	968.14	5914.87	0.00	1676790.53	3237552.27	39.688560	-104.655893
	14400.00	90.00	90.14	7875.00	6080.99	967.89	6014.87	0.00	1676791.19	3237652.27	39.688559	-104.655538
	14500.00	90.00	90.14	7875.00	6180.48	967.64	6114.87	0.00	1676791.84	3237752.26	39.688558	-104.655182
	14600.00	90.00	90.14	7875.00	6279.96	967.39	6214.87	0.00	1676792.50	3237852.26	39.688558	-104.654827
	14700.00	90.00	90.14	7875.00	6379.45	967.14	6314.87	0.00	1676793.16</			

Comments	MD (ft)	Incl (°)	Azim True (°)	TVD (ft)	VSEC (ft)	NS (ft)	EW (ft)	DLS (°/100ft)	Northing (ftUS)	Easting (ftUS)	Latitude (°)	Longitude (°)
	17600.00	90.00	90.14	7875.00	9264.61	959.92	9214.86	0.00	1676812.21	3240852.15	39.688535	-104.644167
	17700.00	90.00	90.14	7875.00	9364.10	959.67	9314.86	0.00	1676812.86	3240952.15	39.688534	-104.643812
	17800.00	90.00	90.14	7875.00	9463.58	959.42	9414.86	0.00	1676813.52	3241052.15	39.688533	-104.643457
	17900.00	90.00	90.14	7875.00	9563.07	959.17	9514.86	0.00	1676814.18	3241152.14	39.688532	-104.643101
	18000.00	90.00	90.14	7875.00	9662.56	958.92	9614.86	0.00	1676814.83	3241252.14	39.688532	-104.642746
Sunset 4-65 21-22 3AH BHL	18064.16	90.00	90.14	7875.00	9726.39	958.76	9679.03	0.00	1676815.26	3241316.30	39.688531	-104.642518

Survey Type: Def Plan

Survey Error Model: ISCWSA Rev 0 *** 3-D 95.000% Confidence 2.7955 sigma
Survey Program:

Description	Part	MD From (ft)	MD To (ft)	EOU Freq (ft)	Hole Size	Casing Diameter (in)	Expected Max Inclination (deg)	Survey Tool Type	Borehole / Survey
	1	0.000	28.000	1/100.000	13.500	9.625		NAL_MWD-NON_SLB-Depth Only	Original Hole / Sunset 4-65 21-22 3AH Plan #0
	1	28.000	2200.000	1/100.000	13.500	9.625		NAL_MWD-NON_SLB	Original Hole / Sunset 4-65 21-22 3AH Plan #0
	1	2200.000	18064.163	1/100.000	8.500	5.500		NAL_MWD_PLUS_0.5_DEG	Original Hole / Sunset 4-65 21-22 3AH Plan #0