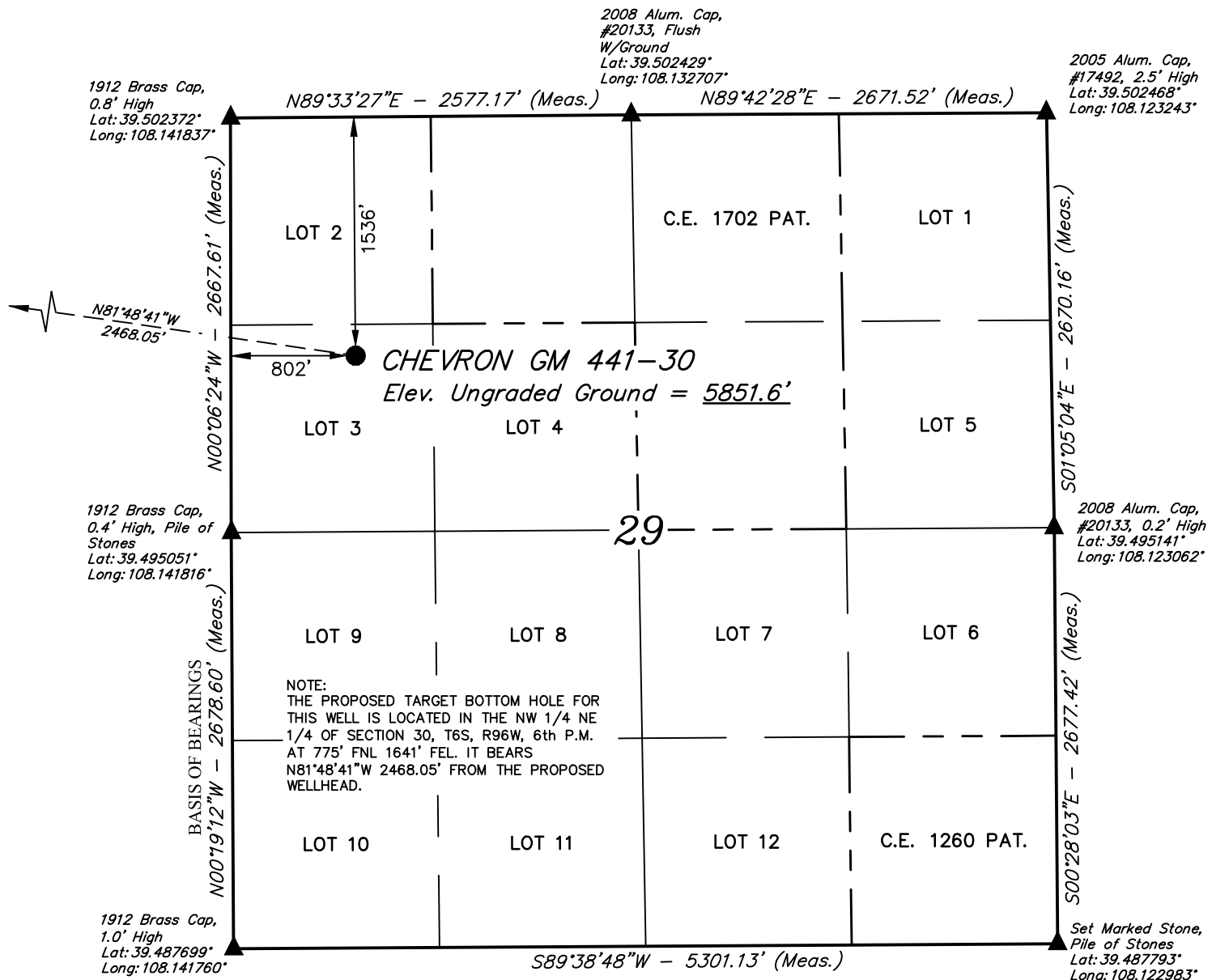


LEGEND:

- = PROPOSED WELLHEAD.
 ▲ = SECTION CORNERS LOCATED. (NAD 83)

T6S, R96W, 6th P.M.



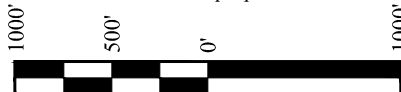
PDOP = 2.9

NAD 83 (SURFACE LOCATION)

LATITUDE = 39°29'53.43" (39.498175)
 LONGITUDE = 108°08'20.35" (108.138985)
 STATE PLANE NAD 83 (CO. CEN.)
 N: 1617154.81 E: 2255404.92

NOTE:

- Distances referenced on plat to section lines are perpendicular.



PLAT #1

CERTIFICATE

THIS IS TO CERTIFY THAT THE ABOVE PLAT WAS PREPARED AND LOCATION AS SHOWN WAS STAKED ON THE GROUND FROM FIELD NOTES OF ACTUAL SURVEYS MADE BY ME OR UNDER MY SUPERVISION AND THAT THE SAME ARE TRUE AND CORRECT TO THE BEST OF MY KNOWLEDGE AND BELIEF.

REGISTERED LAND SURVEYOR
 REGISTRATION NO. 38130
 STATE OF COLORADO

REV: 2 01-28-20 T.L.L. (BHL MOVE)

BASIS OF BEARINGS

BEARINGS ARE A BASED ASSUMPTION THAT THE WEST LINE OF THE SOUTHWEST 1/4 OF SECTION 29 BEARS N00°19'12"W. MONUMENTS DESCRIBED HEREON.

BASIS OF ELEVATION

BENCH MARK (H79) LOCATED IN THE NE 1/4 OF SECTION 35, T4S, R98W, 6th P.M., TAKEN FROM THE BULL FORK QUADRANGLE, COLORADO, 7.5 MINUTE SERIES, (TOPOGRAPHIC MAP) PUBLISHED BY THE UNITED STATES DEPARTMENT OF THE INTERIOR, GEOLOGICAL SURVEY. SAID ELEVATION IS MARKED AS BEING 8535 FEET.

UELS, LLC

Corporate Office * 85 South 200 East
 Vernal, UT 84078 * (435) 789-1017



TEP Rocky Mountain LLC

**CHEVRON GM 441-30 (SURFACE LOCATION)
 LOT 3, SECTION 29, T6S, R96W, 6th P.M.
 GARFIELD COUNTY, COLORADO**

SURVEYED BY	DAYTON SLAUGH, B.H.	04-01-19	SCALE
DRAWN BY	M.D.	04-02-19	1" = 1000'

WELL LOCATION PLAT

T6S, R96W, 6th P.M.

- W.C. 1912 Brass
Cap, 1.5' High
Lat: 39.503325°
Long: 108.159400°

C.C. 1912 Brass Cap,
1.0' High, Mound of
Stones
Lat: 39.501269°
Long: 108.141842°

NW Cor. Sec. 29
1912 Brass Cap,
0.8' High
Lat: 39.502372°
Long: 108.141837°

S89°58'29"W - 4955.34' (True to C.C.)
S89°58'29"W - 4957.68' (True to True)

True Position
Lat: 39.501269°
Long: 108.141834°

True Position
Lat: 39.501256°
Long: 108.159398°

CHEVRON GM 441-30
Target Bottom Hole

NOTE:
THE PROPOSED TARGET BOTTOM HOLE
BEARS N81°48'41"W 2468.05' FROM THE
PROPOSED WELLHEAD WHICH IS LOCATED IN
LOT 3 OF SECTION 29, T6S, R96W, 6th P.M.
AT 1538' ENL 802' FWL

1912 Brass Cap,
1.3' High
Lat: 39.494015°
Long: 108.159390°

1912 Brass Cap,
Flush W/Ground
Lat: 39.486777°
Long: 108.159385°

True Position
Lat: 39.486699°
Long: 108.149889°

W.C. "190" Brass
Cap, 1.3' High,
Lat: 39.486715°
Long: 108.147923°

W 1/4 Cor. Sec. 29
1912 Brass Cap,
0.4' High, Pile of
Stones
Lat: 39.495051°
Long: 108.141816°

SW Cor. Sec. 29
1912 Brass Cap,
1.0' High
Lat: 39.487699°
Long: 108.141760°

C.C. 1902 Brass
Cap, 0.7' High,
Lat: 39.486767°
Long: 108.141743°

R	R
97	96
W	W

- Distances referenced on plat to section lines are perpendicular.

THIS IS TO CERTIFY THAT THE ABOVE PLANS WERE PREPARED AND
LOCATION AS SHOWN WAS STAKED ON THE GROUND FROM FIELD NOTES
OF ACTUAL SURVEYS MADE BY ME OR UNDER MY SUPERVISION AND THAT
THE SAME ARE TRUE AND CORRECT TO THE BEST OF MY KNOWLEDGE AND
BELIEF.

PLAT #1

REGISTERED LAND SURVEYOR
REGISTRATION NO. 38130
STATE OF COLORADO
01-28-20

REV: 3 01-28-20 T.L.L. (BHL MOVE)

BEARINGS ARE A BASED ASSUMPTION THAT THE WEST LINE OF THE SOUTHWEST 1/4 OF SECTION 29 BEARS N00°19'12"W. MONUMENTS DESCRIBED HEREON.

BENCH MARK (H79) LOCATED IN THE NE 1/4 OF SECTION 35, T4S, R98W, 6th P.M., TAKEN FROM THE BULL FORK QUADRANGLE, COLORADO, 7.5 MINUTE SERIES, (TOPOGRAPHIC MAP) PUBLISHED BY THE UNITED STATES DEPARTMENT OF THE INTERIOR, GEOLOGICAL SURVEY. SAID ELEVATION IS MARKED AS BEING 8535 FEET.

**Corporate Office * 85 South 200 East
Vernal, UT 84078 * (435) 789-1017**

TEP Rocky Mountain LLC

**CHEVRON GM 441-30 (TARGET BOTTOM HOLE)
NW 1/4 NE 1/4, SECTION 30, T6S, R96W, 6th P.M.
GARFIELD COUNTY, COLORADO**

SURVEYED BY	DAYTON SLAUGH, B.H.	04-01-19	SCALE
DRAWN BY	M.D.	04-01-19	1" = 1000'

WELL LOCATION PLAT

UINTAH
ENGINEERING & LAND SURVEYING