

Complaint Photos
Complaint Name: Stewardson
Complaint Doc#: 200448944



Photo 1 & 2 – Main seep, sample location for Stewardson Field. Seep water was flowing at approximately 2 gallons per minutes. Water was clear of sediment and no sheen was present.

Complaint Photos
Complaint Name: Stewardson
Complaint Doc#: 200448944



Photo 3 – Irrigation runoff. Background sample location.



Photo 4 – Irrigation ditch terminus (left), pipeline ROW, and PDC Phelps Pad (background)

Complaint Photos
Complaint Name: Stewardson
Complaint Doc#: 200448944



Photo 5 – Main seep (foreground) additional seeps seen in background



Photo 6 – Additional seeps observed along pipeline ROW

Complaint Photos
Complaint Name: Stewardson
Complaint Doc#: 200448944



Photo 7 – Sample point for WL, wetlands inside PDC Phelps Pad.



Photo 8 – Looking towards the main seep from the wetlands.

Complaint Photos
Complaint Name: Stewardson
Complaint Doc#: 200448944



Photo 9 – Wetland disturbance: imported riprap.
Electrical conduit running across wetland.



Photo 10 – Wetland disturbance: imported riprap.
Electrical conduit running across wetland.

Complaint Photos
Complaint Name: Stewardson
Complaint Doc#: 200448944



Photo 11 – Wetland disturbance imported riprap, fill, and plastic liner



Photo 12 – Wetland disturbance trash and debris in wetland.

Complaint Photos
Complaint Name: Stewardson
Complaint Doc#: 200448944



Photo 13 – Wetland disturbance looking south from production pad to wellhead pad



Photo 14 – Wetland disturbance looking north from wellhead pad to production pad

Complaint Photos
Complaint Name: Stewardson
Complaint Doc#: 200448944



Photo 15 – Looking up-gradient from access road between the wellheads and production facility for the Phelps pad (main seep in background).



Photo 16 – Looking down-gradient from access road between the wellheads and production facility for the Phelps pad (wellheads and wetlands in background).

Complaint Photos
Complaint Name: Stewardson
Complaint Doc#: 200448944



Photo 17 – Non-functional water control devices between seeps and access road for the Phelps pad.



Photo 18 – Diversion ditch on north side of the Phelps Pad.

Complaint Photos
Complaint Name: Stewardson
Complaint Doc#: 200448944



Photo 19 – Culvert under access road. No flow observed.



Photo 20 – Culvert under access road. No flow observed.

Complaint Photos
Complaint Name: Stewardson
Complaint Doc#: 200448944



Photo 21 – Low point in production facility pad discharging sediment into wetland.



Photo 22 – Low point in production facility pad discharging sediment into wetland.

Complaint Photos
Complaint Name: Stewardson
Complaint Doc#: 200448944



Photo 23 – Vehicle tracks through wetland area.



Photo 24 – Vehicle tracks through wetland area.

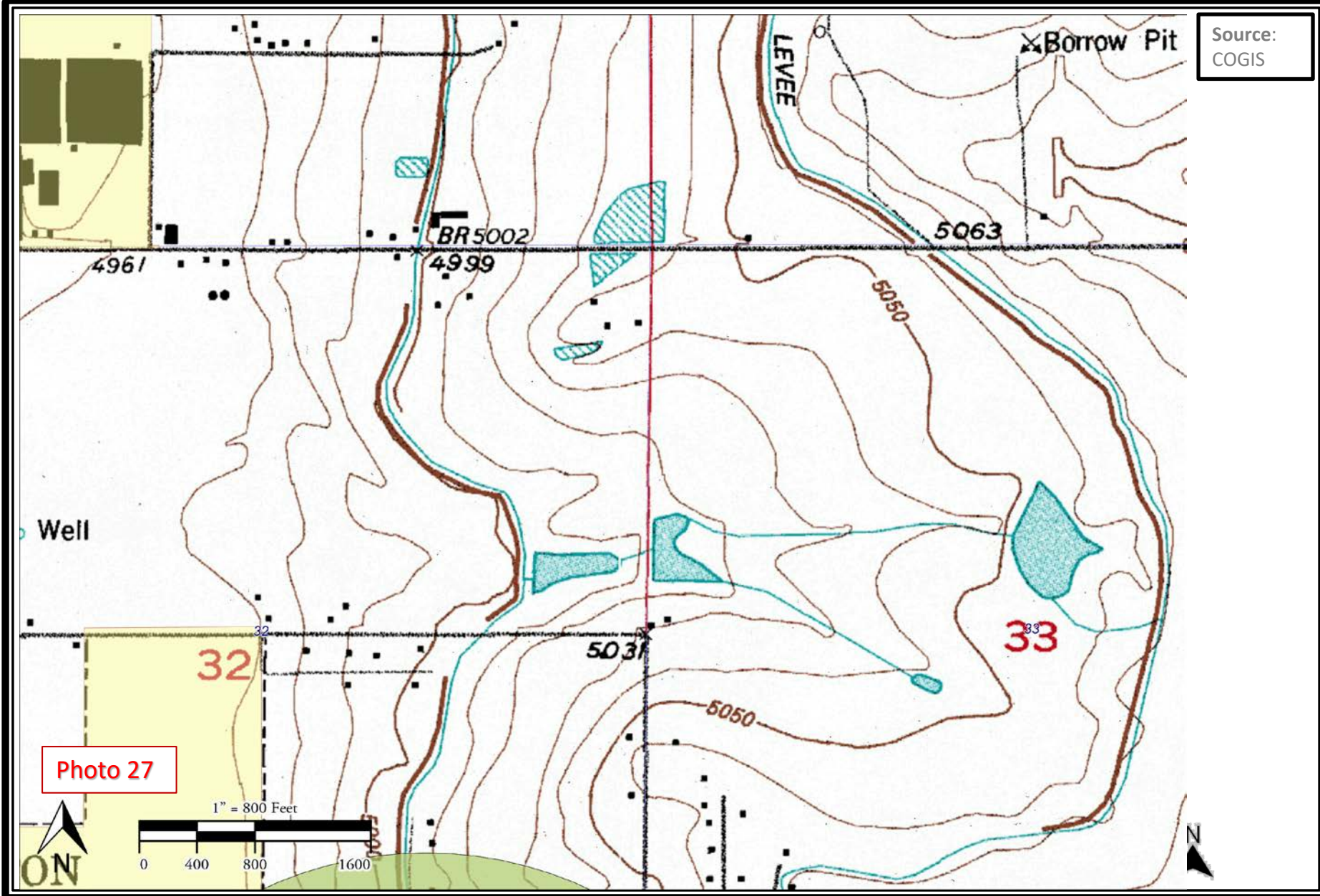
Complaint Photos
Complaint Name: Stewardson
Complaint Doc#: 200448944



Photo 25 – Vehicle tracks through wetland area.



Photo 26 – Vehicle tracks through wetland area.



Source:
COGIS



U.S. Fish and Wildlife Service
National Wetlands Inventory

Phelps Pad Wetlands Mapper



May 19, 2020

Wetlands

Estuarine and Marine Deepwater	Freshwater Emergent Wetland	Lake
Estuarine and Marine Wetland	Freshwater Forested/Shrub Wetland	Other
	Freshwater Pond	Riverine

This map is for general reference only. The US Fish and Wildlife Service is not responsible for the accuracy or currentness of the base data shown on this map. All wetlands related data should be used in accordance with the layer metadata found on the Wetlands Mapper web site.

Photo date:
9/12/2019
Source:
Google Earth

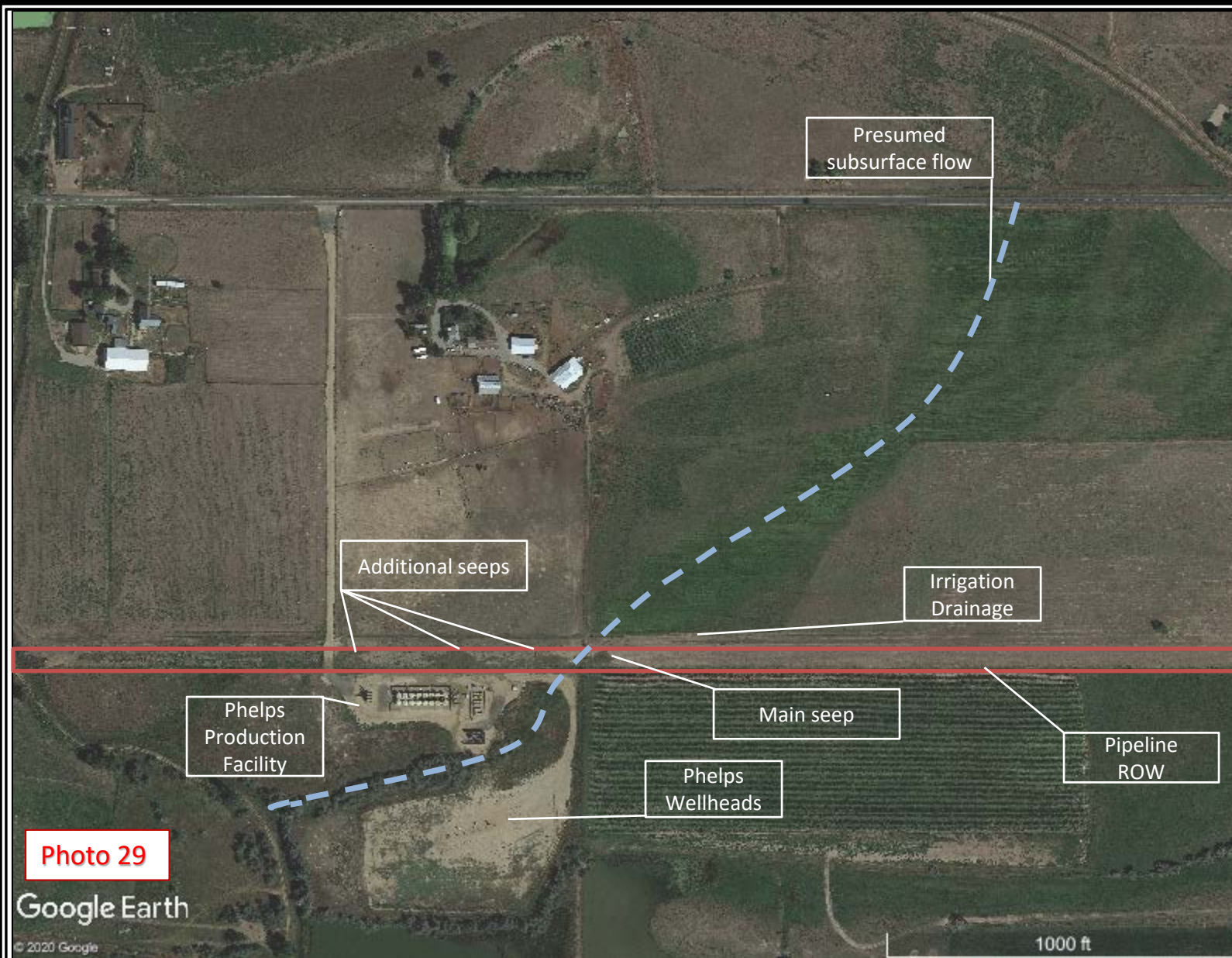


Photo 29

Google Earth

© 2020 Google



COLORADO
Oil & Gas Conservation
Commission
Department of Natural Resources

Photo date:
9/12/2019
Source:
Google Earth



Photo 30

Google Earth

© 2020 Google



COLORADO
Oil & Gas Conservation
Commission
Department of Natural Resources

Stiff Diagram

Photo date:
9/12/2019
Source:
Google Earth

Field Seep

Irrigation

Wetland

Background Sample Point
Irrigation runoff

WL Sample Point
Wetland surface water

Field Sample Point
Seep surface water

Photo 31

Google Earth

© 2020 Google

1000 ft



COLORADO
Oil & Gas Conservation
Commission
Department of Natural Resources

Photo date:
9/12/2019
Source:
Google Earth

Photo 32

Google Earth

© 2020 Google

1000 ft



COLORADO
Oil & Gas Conservation
Commission
Department of Natural Resources

Photo date:
9/12/2019
Source:
Google Earth

Photo 33

Google Earth

300 ft



COLORADO
Oil & Gas Conservation
Commission
Department of Natural Resources

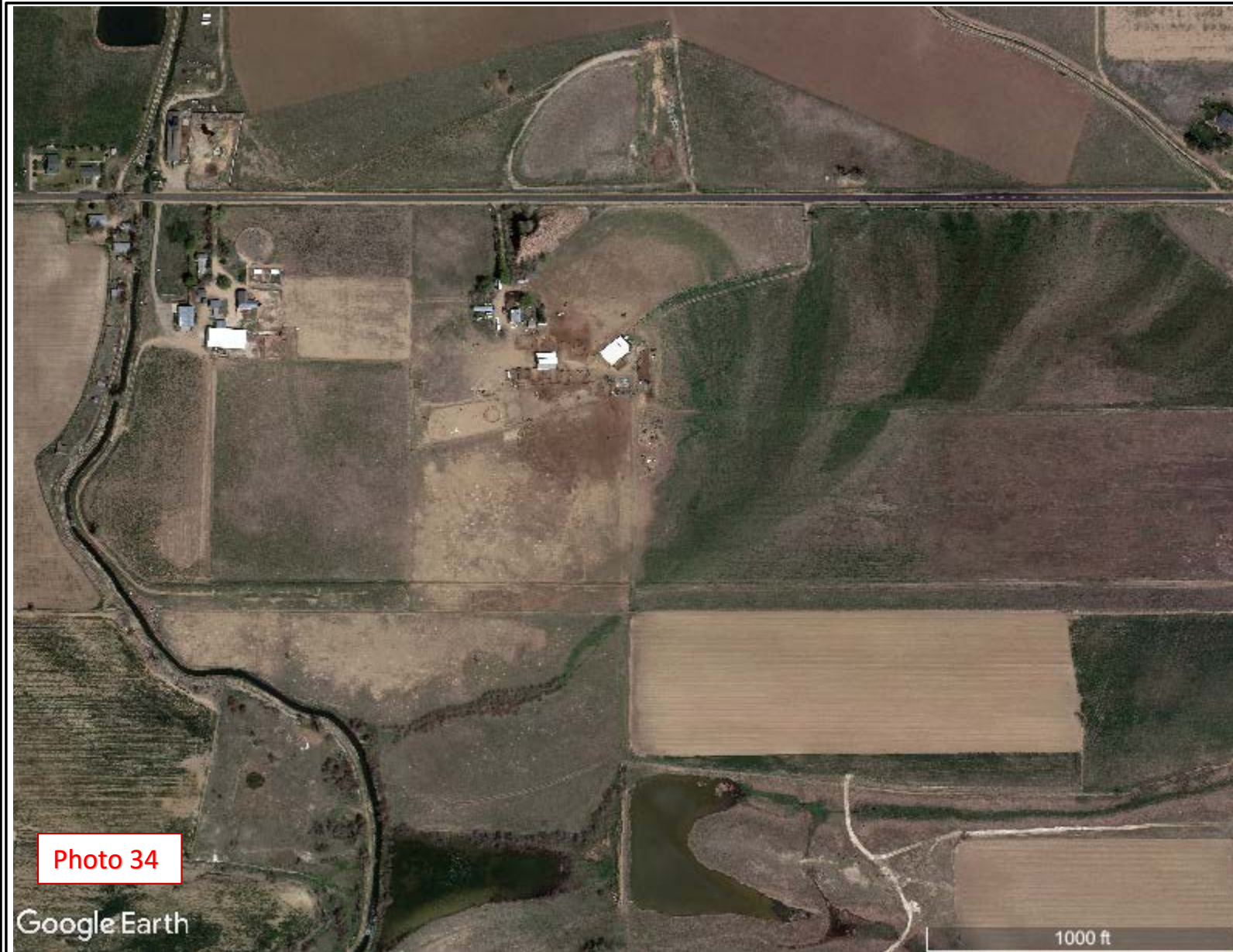


Photo date:
5/4/2011
Source:
Google Earth

Photo 34

Google Earth

1000 ft



COLORADO
Oil & Gas Conservation
Commission
Department of Natural Resources

Photo date:
5/4/2011
Source:
Google Earth

Photo 35

Google Earth

300 ft



COLORADO
Oil & Gas Conservation
Commission
Department of Natural Resources