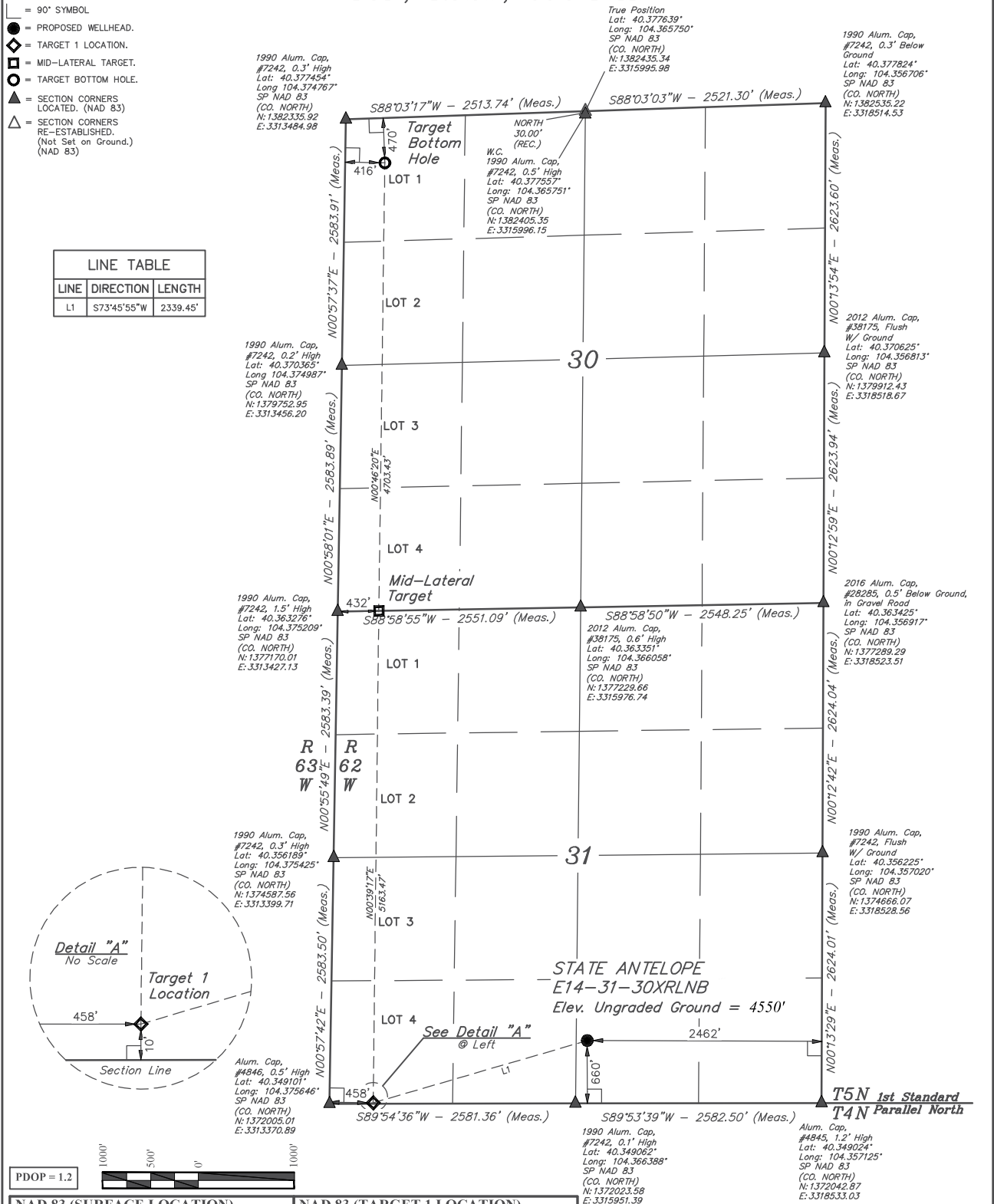


LEGEND:

- = 90° SYMBOL
- = PROPOSED WELLHEAD.
- ◆ = TARGET 1 LOCATION.
- ◻ = MID-LATERAL TARGET.
- = TARGET BOTTOM HOLE.
- ▲ = SECTION CORNERS LOCATED. (NAD 83)
- △ = SECTION CORNERS RE-ESTABLISHED. (Not Set on Ground.) (NAD 83)

LINE TABLE		
LINE	DIRECTION	LENGTH
L1	S73°45'55"W	2339.45'

T5N, R62W, 6th P.M.



NAD 83 (SURFACE LOCATION)	NAD 83 (TARGET 1 LOCATION)
LATITUDE = 40°21'03.14" (40.350873°)	LATITUDE = 40°20'56.84" (40.349122°)
LONGITUDE = 104°21'57.35" (104.365929°)	LONGITUDE = 104°22'26.41" (104.374002°)
STATE PLANE NAD 83 (CO. NORTH)	STATE PLANE NAD 83 (CO. NORTH)
N: 1372684.77' E: 3316070.69'	N: 1372018.30' E: 3313828.93'
NAD 83 (MID-LATERAL TARGET)	NAD 83 (TARGET BOTTOM HOLE)
LATITUDE = 40°21'47.84" (40.363289°)	LATITUDE = 40°22'34.30" (40.376194°)
LONGITUDE = 104°22'25.17" (104.373659°)	LONGITUDE = 104°22'23.93" (104.373313°)
STATE PLANE NAD 83 (CO. NORTH)	STATE PLANE NAD 83 (CO. NORTH)
N: 1377180.12' E: 3313859.14'	N: 1381881.96' E: 3313895.82'

THIS IS TO CERTIFY THAT THE ABOVE SURVEY WAS MADE IN ACCORDANCE WITH THE NOTES OF ACTUAL SURVEYS MADE AND THAT THE SAME ARE TRUE AND CORRECT TO THE BEST OF MY KNOWLEDGE AND BELIEF.



REV: 1 10-18-18 CJVIE (SURFACE LOCATION MOVE)

UINTEAH
ENGINEERING & LAND SURVEYING

UELS, LLC
Corporate Office * 85 South 200 East
Vernal, UT 84078 * (435) 789-1017

BASIS OF BEARINGS
TRANSVERSE MERCATOR PROJECTION WITH
A CENTRAL MERIDIAN OF W105°00'00".

BASIS OF ELEVATION
OPUS SOLUTION GENERATED NAVD 88

BONANZA CREEK ENERGY
OPERATING COMPANY, LLC

STATE ANTELOPE
E14-31-30XRLNB
SW 1/4 SE 1/4, SECTION 31, T5N, R62W, 6th P.M.
WELD COUNTY, COLORADO

SURVEYED BY	RYAN WILLIAMS, Z.R.	07-16-18	SCALE
DRAWN BY	CJVIE	10-01-18	1" = 1000'

WELL LOCATION PLAT